

LEGEND

existing trees proposed to be retained

existing trees proposed to be removed

regulated trees proposed to be retained + TPZ

existing aquatic planting proposed for retention

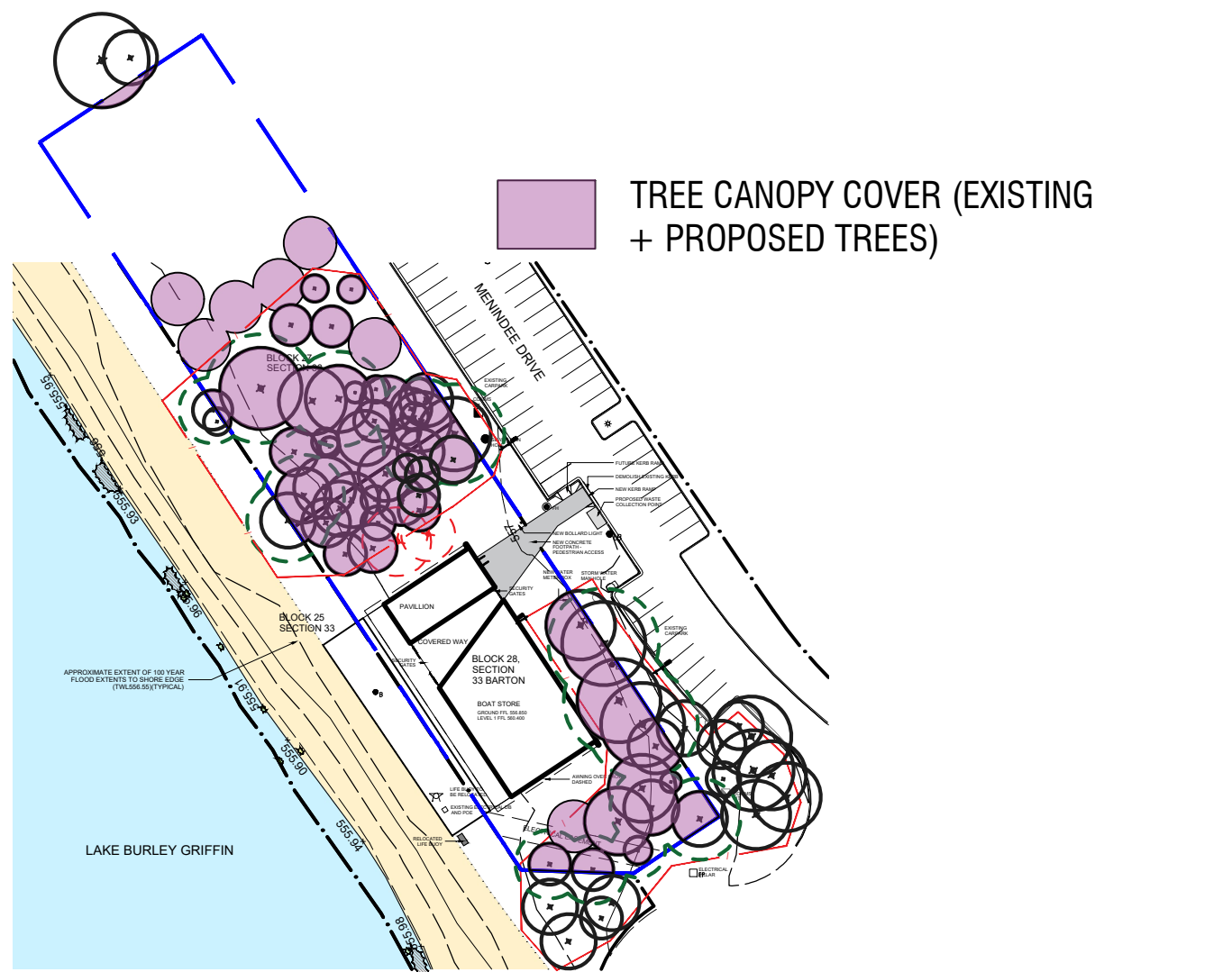
proposed trees

infill/additional aquatic plantings

dryland grass  
to TCCS standards

concrete paving

beach sand  
coarse washed sand



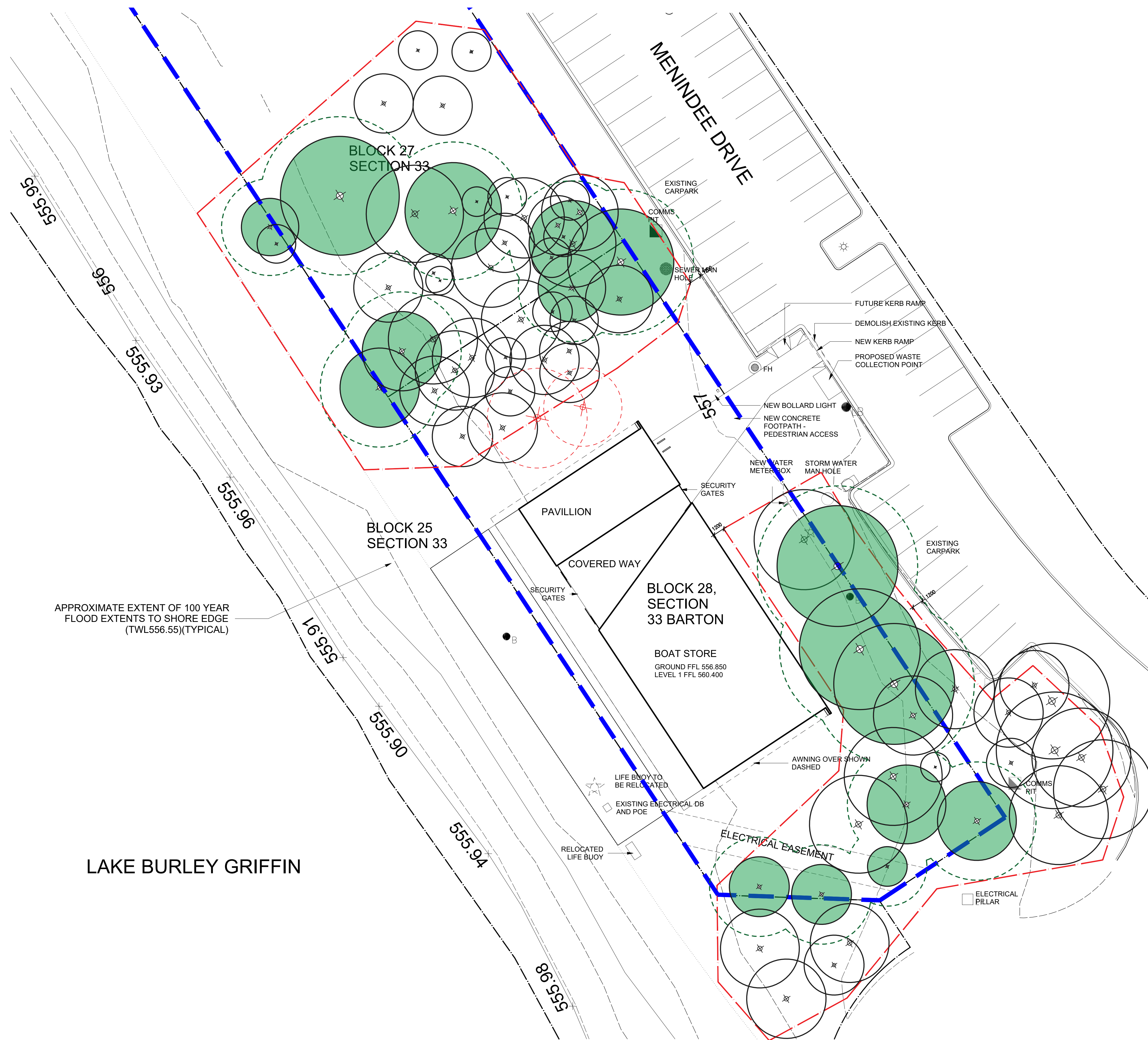
EXISTING TREE CANOPY COVER WITHIN SITE BOUNDARY= **32%**  
(EXCLUDING TREES TO BE REMOVED)

PROPOSED TREE CANOPY COVER WITHIN SITE BOUNDARY= **40%**  
(EXISTING + PROPOSED TREES)

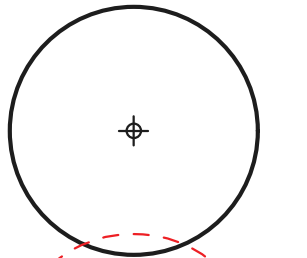
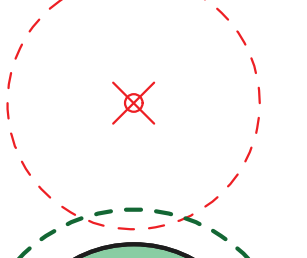
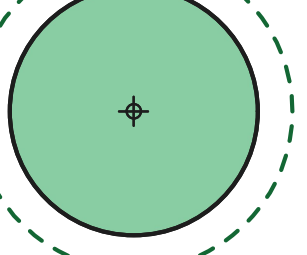

PLANTING SCHEDULE

TREES		SIZE	QTY
SYM	NAME		
EDI	Eucalyptus dives	200SR	3
EME	Eucalyptus melliodora	200SR	2
EPO	Eucalyptus polyanthemos	200SR	1





LEGEND

-  existing trees proposed to be retained
-  existing trees proposed to be removed
-  regulated trees proposed to be retained + TPZ
-  temporary construction fencing

TREE PROTECTION NOTES

INSTALL 1800mm TALL CONTINUOUS CHAIN MESH PANELS SUPPORTED BY CONCRETE BASES TO ISOLATE CONSTRUCTION SITE WORKS AND VERGES AS SHOWN ON DRAWING.

ALL FENCING TO BE ERECTED ON COMMENCEMENT OF SITE WORK AND REMOVED AT COMPLETION OF CONSTRUCTION. THE FENCE IS TO REMAIN CONTINUOUS THROUGHOUT THE PROJECT, EXCEPT WHERE APPROVED SERVICE INSTALLATION OCCURS.

EXCAVATE WITH EXTREME CARE WITHIN TREE PROTECTION ZONES (CANOPY + 2m) EXPOSE ROOTS AND CUT ALL ROOTS >50mm DIA BY HAND SAW.

ALL EXPOSED ROOTS ARE TO BE KEPT DAMP (THROUGH WRAPPING IN WET HESSIAN OR SIMILAR) AND BACKFILLED AS SOON AS POSSIBLE. ANY PRUNING TO REMOVE BRANCHES TO BE IN ACCORDANCE WITH AUSTRALIAN STANDARD 4373 'PRUNING OF AMENITY TREES'.

ALL WORK IS TO BE IN ACCORDANCE WITH MITS 09 + TCCS REF 06 DOCUMENTS. ALL AREAS OF THE VERGE THAT ARE AFFECTED BY WORKS ARE TO BE REINSTATED AS PER MITS AND MIS REQUIREMENTS.

IT IS THE RESPONSIBILITY OF THE BUILDER TO ENSURE THAT ANY DISTURBANCES TO THE VERGE, TREES, PATHS, KERBS, ROADWAYS OR SERVICES OCCURING FROM EITHER CONSTRUCTION WORKS OR STORAGE OF MACHINERY/MATERIALS DURING THE CONSTRUCTION. WORKS ARE RECTIFIED TO THE SATISFACTION OF RELEVANT AUTHORITIES.

NO CARPARKING OR EQUIPMENT PARKING PERMITTED ON VERGES/OPEN SPACE.

NO SITE SHEDS, STORAGE SHEDS, SITE AMENITIES OR BILLBOARDS TO BE ERECTED ON VERGES.

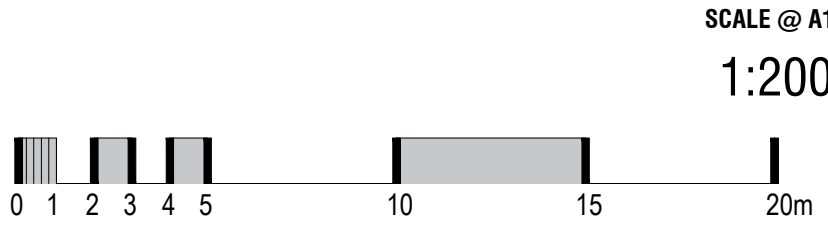
NO CONSTRUCTION MATERIAL TO BE STORED ON VERGES.

NO WASH DOWN AREA WITHIN TREE PROTECTION ZONES.

REV.	DESCRIPTION	DRAWN	APPROVED	DATE
A	FOR APPROVAL	DF	NH	27JAN22
B	FOR APPROVAL	DF	NH	05APR22
C	FOR APPROVAL	DF	NH	12APR22
D	FOR APPROVAL	HJ	NH	27SEP22
-	-	-	-	-
-	-	-	-	-
-	-	-	-	-
-	-	-	-	-
-	-	-	-	-
-	-	-	-	-

HARRIS HOBBS  
LANDSCAPES

Landscape Architect  
16 ROBE STREET  
DEAKIN ACT 2600  
p +61 2 6273 4661  
e hhl@hhl.com.au  
w www.hhl.com.au



STATUS FOR APPROVAL

DATE  
SEP 2022  
CLIENT  
CANBERRA DRAGON BOAT ASSOCIATION

PROJECT  
DRAGON BOAT FACILITIES  
DRAWING TITLE  
TREE PROTECTION PLAN

JOB 20081

REV D DWG 202



