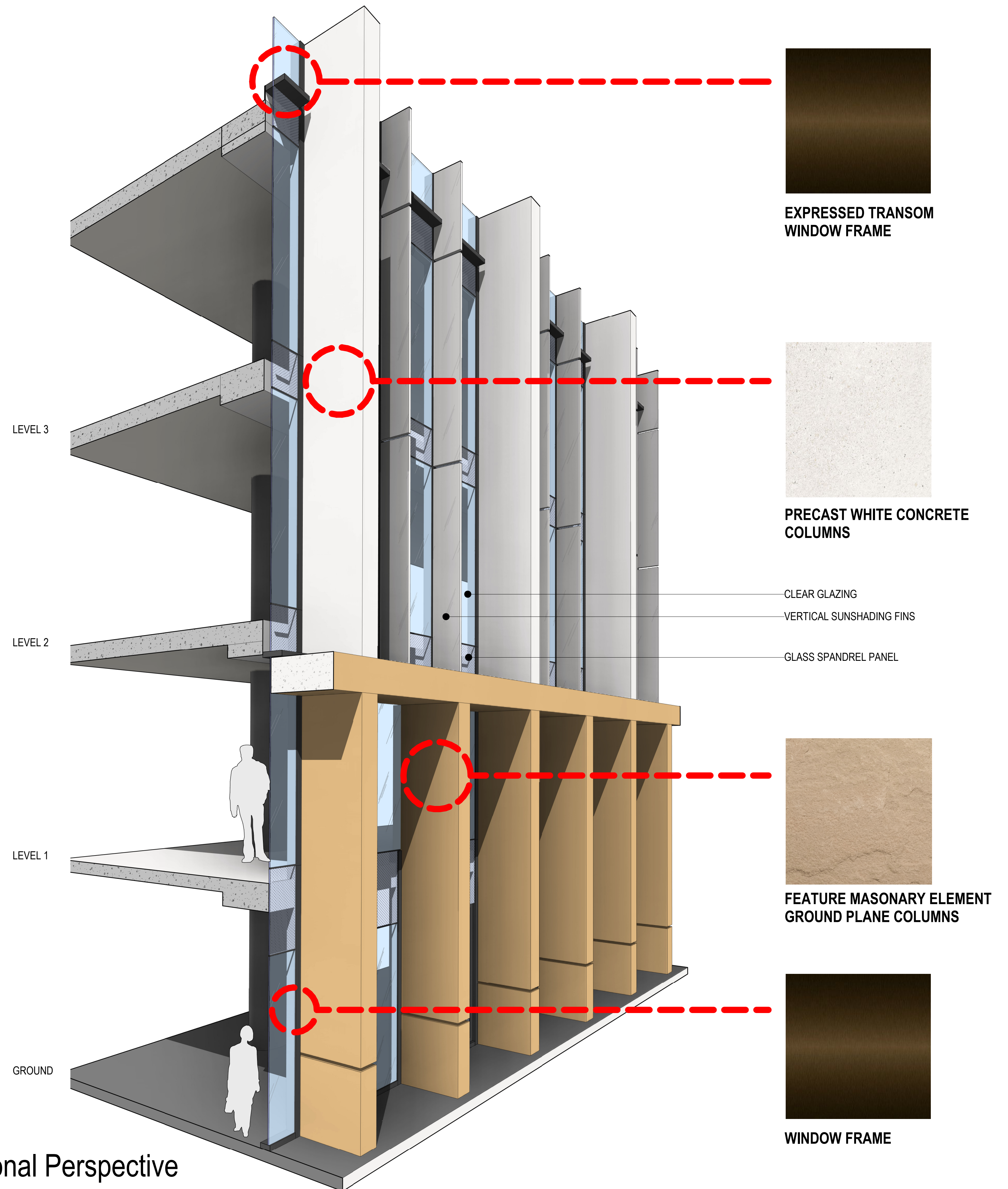
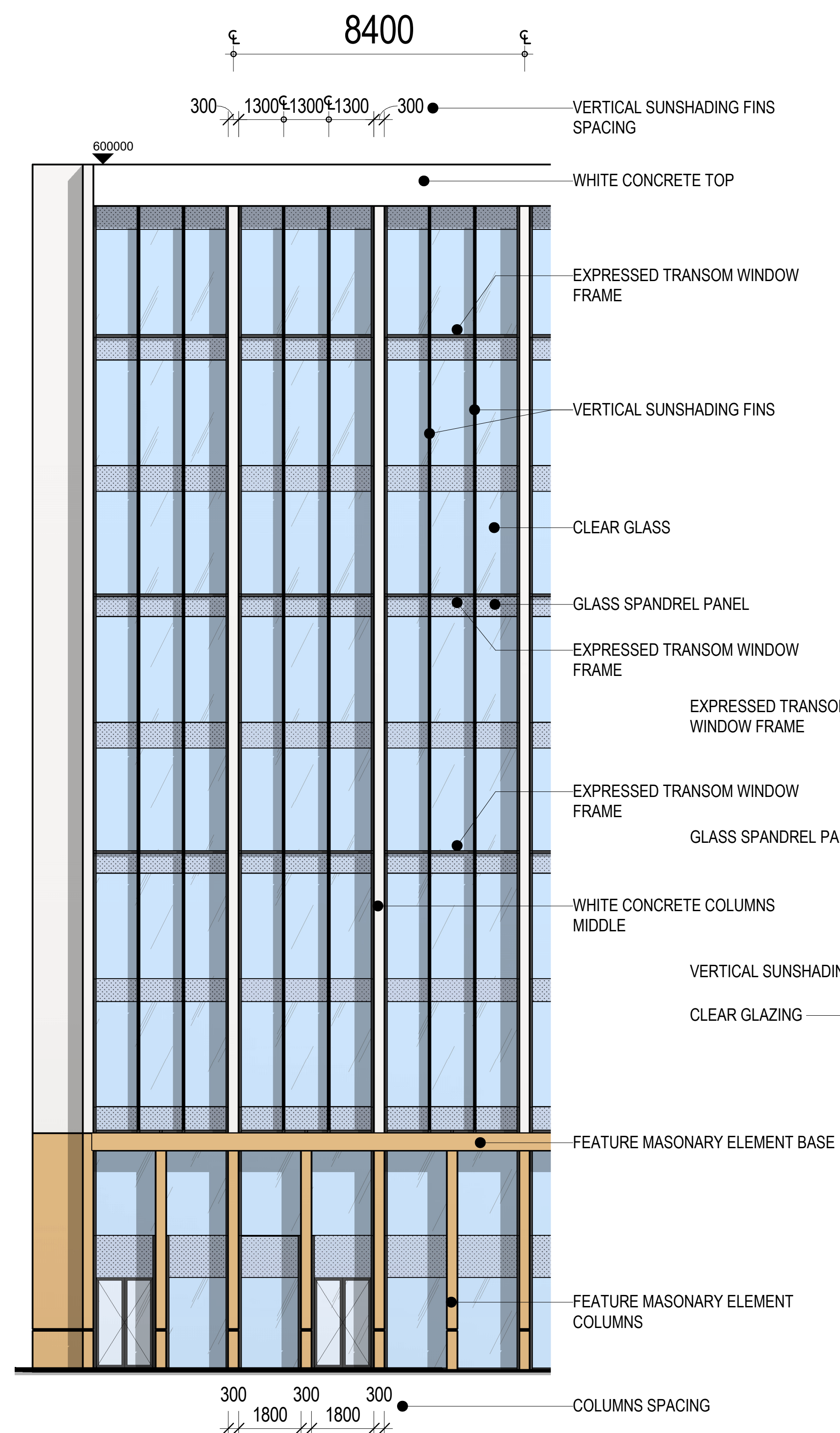


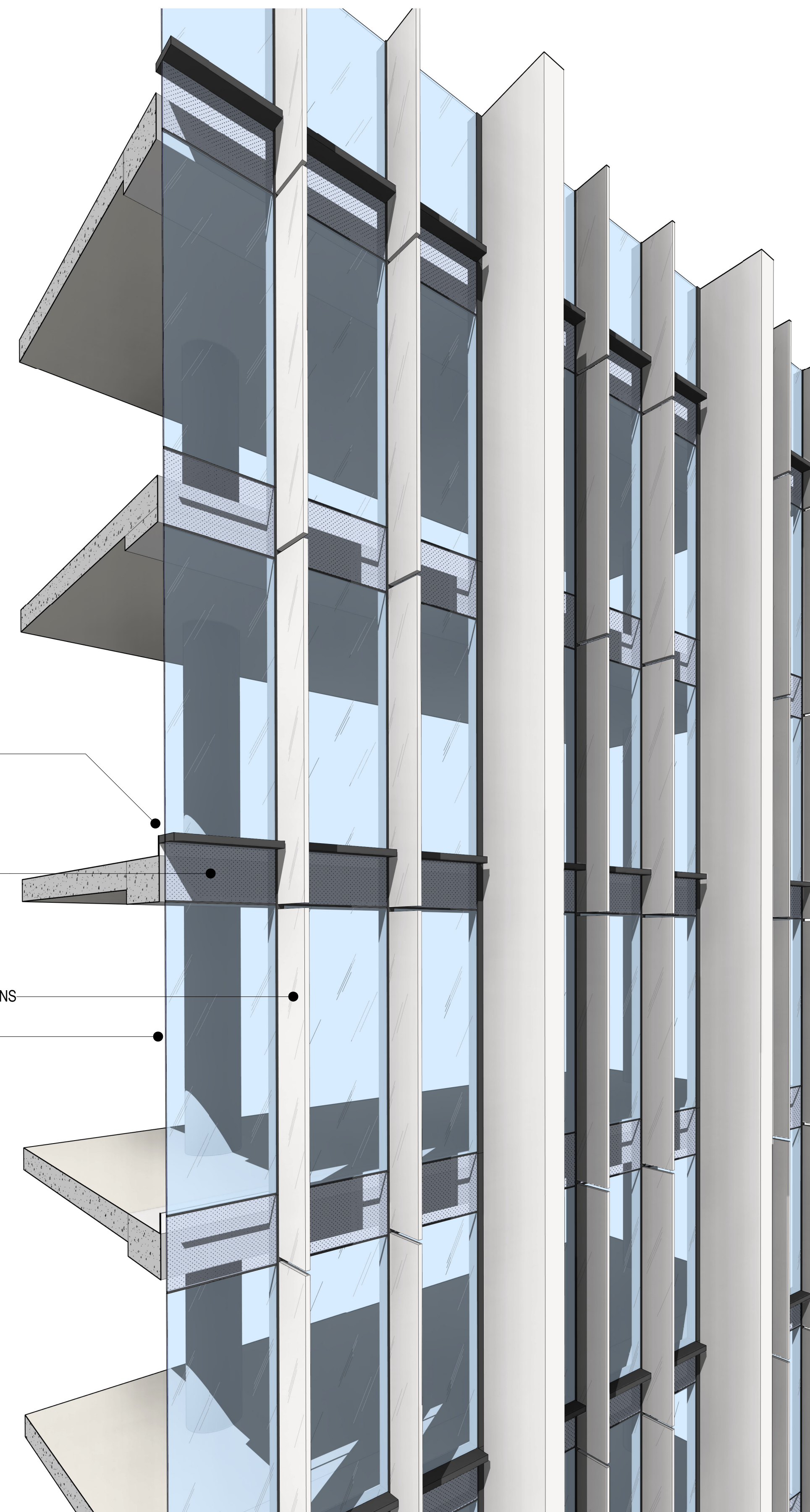
Part Elevation



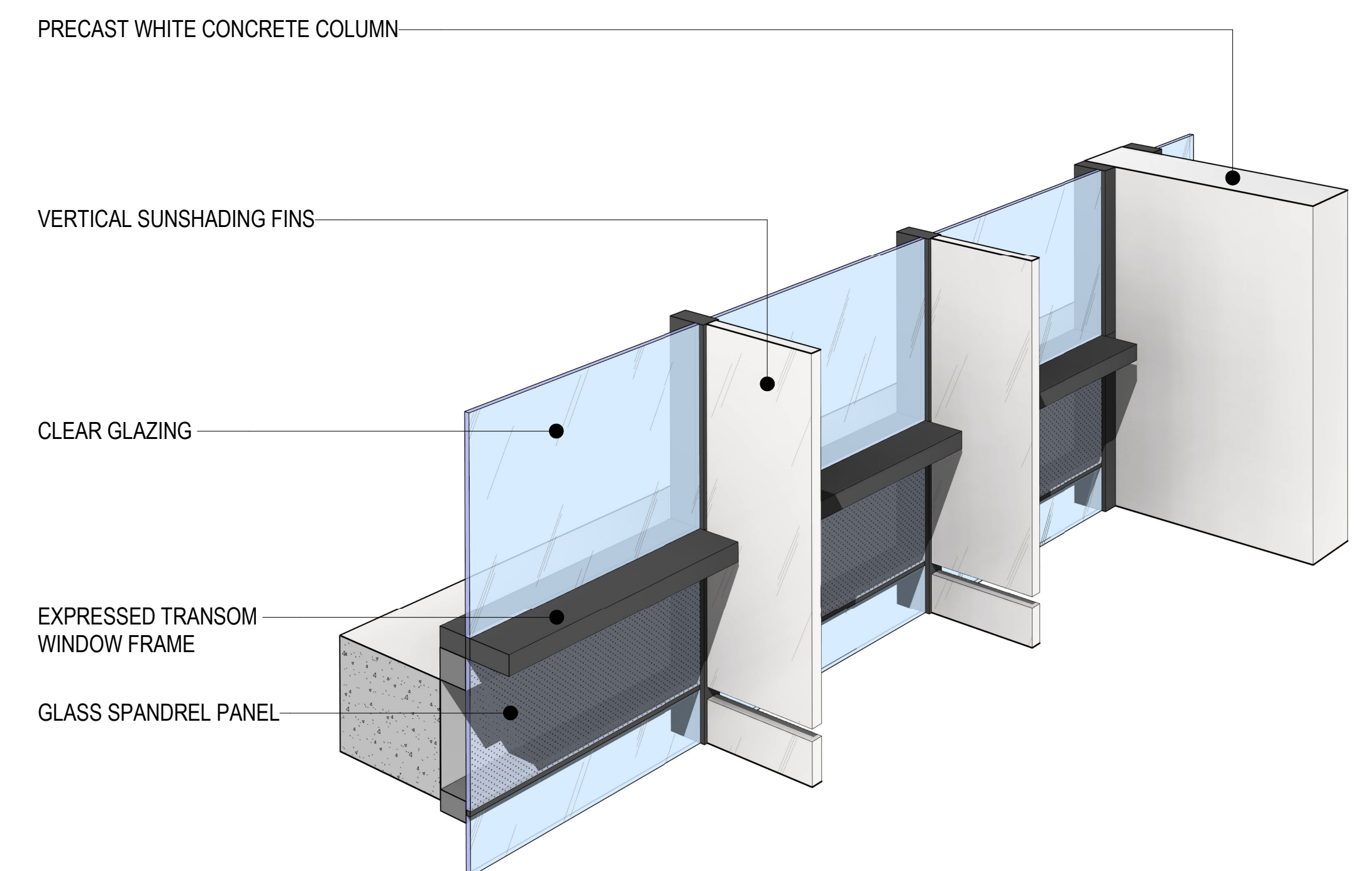
Part Sectional Perspective



Part Elevation



Part Sectional Perspective



Typical Facade Transom Detail



MF-01 **ANNODISED ALUMINIUM WINDOW FRAME**

ANNODISED ALUMINIUM WINDOW FRAME
(TYPICAL TO ALL GLAZING)
COLOUR - ANNODISED BRONZE APPEARANCE



CON-01 **PRECAST CONCRETE**
PRECAST CONCRETE COLUMNS, COLOUR WHITE.

SS **VERTICAL SUNSHADING BLADES**
ANNODISED ALUMINIUM SUNSHADING
COLOUR - ANNODISED WHITE APPEARANCE TO
MATCH CONCRETE COLUMNS



GL-02 **CLEAR GLAZING ENTRY**
CLEAR GLASS USED ON GROUND FLOOR
ENTRY FOYER

GL-01 **CLEAR GLAZING**
LOCATED ON TYPICAL OFFICE FLOOR PLATES.



SP **FEATURE MASONRY CLADDING**
FEATURE MASONARY ELEMENT CLADDING TO
COLUMNS AT BASE OF BUILDING

- GL-01

CLEAR GLAZING

LOCATED ON TYPICAL OFFICE FLOOR PLATES, ANODISED ALUMINIUM GLAZING SUITE.
- GL-02

CLEAR GLAZING ENTRY

CLEAR GLASS USED ON GROUND FLOOR ENTRY FOYER
- GL-03

LOUVRED GLASS

REFLECTIVE COLOUR BACK SPANDREL GLASS LOUVRE, LOCATED AT GROUND LEVEL.



- GL-04

EAST FACETED GLASS

LOCATED TO EAST FACADE FACING RESIDENTIAL WITH INDIVIDUAL GLASS PANELS ANGLED TO CREATE FACETED APPEARANCE.
- GL-05

EAST FACETED GLASS

LOCATED TO EAST FACADE, PERFORATED OPAQUE GLASS WITH PLANT BEHIND.
- GL-06

EAST FACETED GLASS

LOCATED TO EAST FACADE, WITH OPAQUE INTERNAL FILM.



- MF-01

ANNODISED ALUMINIUM WINDOW FRAME

ANNODISED ALUMINIUM WINDOW FRAME (TYPICAL TO ALL GLAZING)
COLOUR - ANNODISED BRONZE APPEARANCE
- MC

METAL CLADDING

METAL CLADDING TO EAST FACADE SILL
COLOUR - BRONZE APPEARANCE



- LV-01

ALUMINIUM LOUVRES

ANODISED ALUMINIUM LOUVRES FOR PLANT / SERVICES ZONES AT GROUND AND LEVEL 1
COLOUR - BRONZE APPEARANCE



- D1

RIBBED DOORS

SOLID CORE DOORS, WITH APPLIED LIGHT WEIGHT RIBS TO MATCH ADJOINING CON-02 PRECAST WALL PANELS.
COLOUR - DARK GREY



- CON-02

RIBBED PRECAST CONCRETE

PRECAST CONCRETE, TEXTURED FINISHED, MID TONE GREY COLOUR, WITH VERTICAL JOINT LINES. PRECAST ELEMENT AT GROUND LEVEL, EAST FACADE (FACING RESIDENTIAL).



- CON-01

PRECAST CONCRETE

PRECAST CONCRETE COLUMNS, COLOUR WHITE.
- SS

VERTICAL SUNSHADING BLADES

ANNODISED ALUMINIUM SUNSHADING
COLOUR - ANNODISED WHITE APPEARANCE TO MATCH CONCRETE COLUMNS



- AW

AWNING

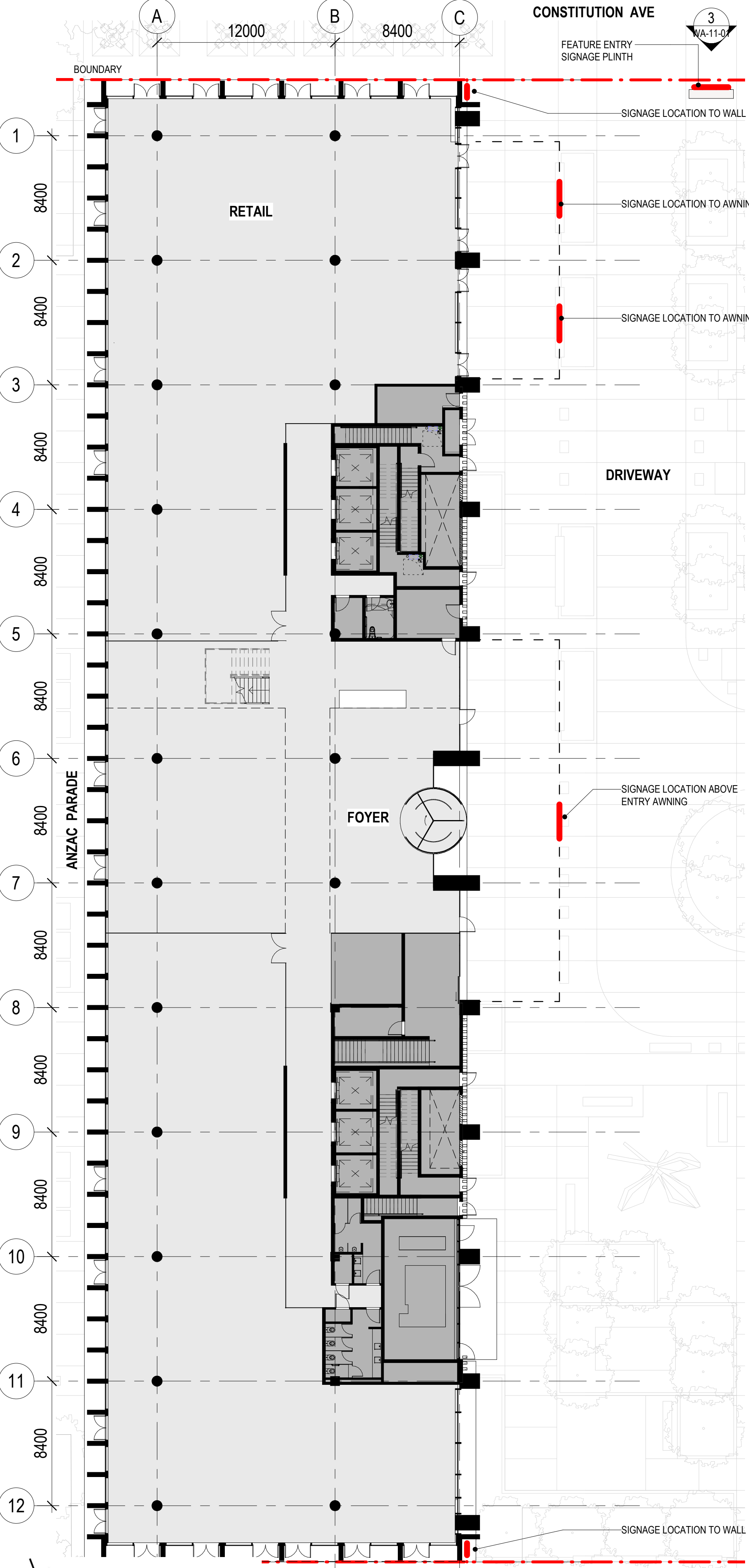
ALUMINIUM CLAD AWNING SOFFIT, WITHIN A STEEL FRAME. AWNING ABOVE ENTRY REVOLVING ENTRY DOOR & RETAIL.
COLOUR - BRONZE APPEARANCE

- SP

FEATURE MASONRY CLADDING

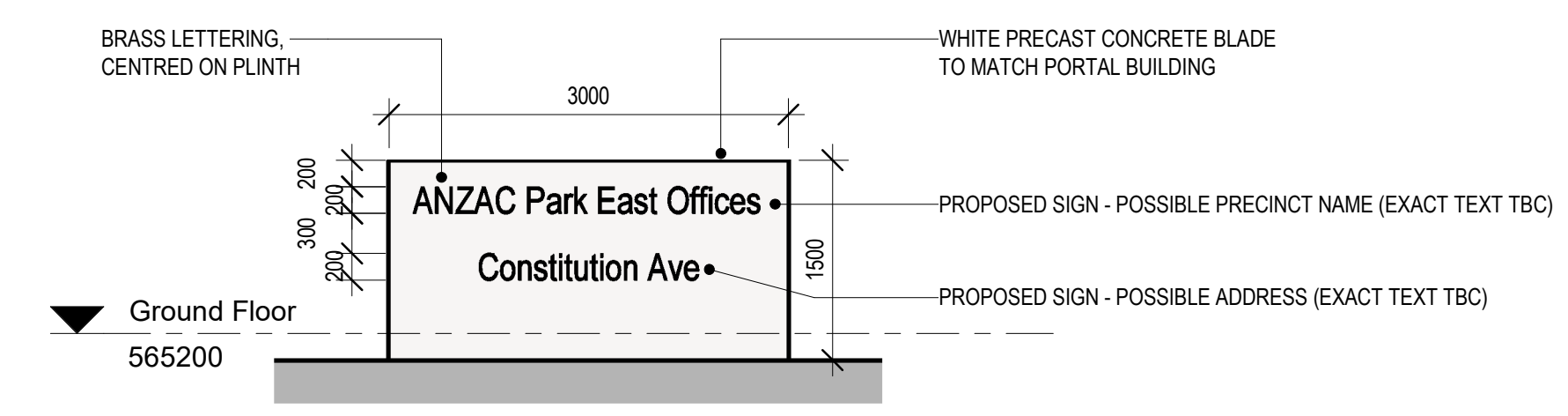
FEATURE MASONRY ELEMENT CLADDING TO COLUMNS AT BASE OF BUILDING

Perspective - Constitution Ave



2 SOUTH EAST ELEVATION SIGNAGE
Scale: 1 : 200

GENERAL NOTES:
- SIGNS TO BE ILLUMINATED (BACKLIT) SIGN - NO FLASHING ELEMENTS TO PORTAL BUILDING
- COLOUR, GRAPHIC & LOGO TBC
- ENTRY PLINTH SIGN TO BE BRASS LETTERING



3 SIGNAGE PLINTH ELEVATION
Scale: 1 : 50

	20.09.22	5	WORKS APPROVAL
	02.09.22	4	WORKS APPROVAL
	01.09.22	3	NCA PRESENTATION
	20.05.22	2	SIGNAGE PLAN UPDATE
	Date	Rev.	Status or Amendment

SIGNAGE PLAN

