

CANBERRA LIGHT RAIL - STAGE 2A

SIGNAGE & WAYFINDING

DRAWING COLOUR CODED - PRINT ALL COPIES IN COLOUR

SCALE @ A1

IC CERTIFICATE NUMBER:				
C	APPROVALS ISSUE	PB/10.02.23	AM/10.02.23	IC/10.02.23
B	APPROVALS ISSUE	PB/16.12.22	AM/16.12.22	IC/16.12.22
A	CO-ORDINATION SET - WORK IN PROGRESS	PB/04.11.22	AM/04.11.22	IC/04.11.22
AMD	DESCRIPTION	DESIGNER SIGN/DATE	VERIFIED SIGN/DATE	APPROVED SIGN/DATE
CO-ORDINATE SYSTEM: STROMLO		HEIGHT DATUM: A.H.D.		SCALE:



This drawing is confidential and shall only be used for the purpose of this project. The signing of this title block confirms the design and drafting of this project have been prepared and checked in accordance with the Canberra Light Rail quality assurance system to ISO 9001-2000.

COX

DRAWN TIMOTHY YEUNG
DESIGNED PRERNA BHASKAR
DRG CHECK ANDY MEDHURST
DESIGN CHECK IAN CONNOLLY
APPROVED IAN CONNOLLY

NOT FOR CONSTRUCTION			
Canberra Light Rail Stage 2A			
DESIGN PACKAGE 80 - SIGNAGE AND WAYFINDING			
Cover Sheet			
DESIGN LOT No:	SHEET: 1	OF 1	A1
STATUS: APPROVALS ISSUE			©
DRG No.	S210-COX-SGN-ARC-WY-0001		C
EDMS No.			

A

B

C

D

E

F

G

H

A

B

C

D

E

F

G

H

1

2

3

4

5

6

7

8

9

10

11

12

DRAWING LIST

DRAWING No.	DRAWING TITLE	Current Revision
S210-COX-SGN-ARC-WY-0001	Cover Sheet	C
S210-COX-SGN-ARC-WY-0002	Notes, Legends & Drawings Register	C
S210-COX-SGN-ARC-WY-0004	Northbourne & Edinburgh Avenue Key Plan	C
S210-COX-SGN-ARC-WY-0014	EDL_05	A
S210-COX-SGN-ARC-WY-0017	EDL_08	C
S210-COX-SGN-ARC-WY-0018	EDL_09	C
S210-COX-SGN-ARC-WY-0030	CTS_08	C
S210-COX-SGN-ARC-WY-0034	CMP_04	C
S210-COX-SGN-ARC-WY-0039	Edinburgh Avenue Stop Sign Location Plan	C
S210-COX-SGN-ARC-WY-0040	City South Stop Sign Location Plan	C
S210-COX-SGN-ARC-WY-0041	Commonwealth Park Stop Sign Location Plan	C
S210-COX-SGN-ARC-WY-0046	Materials, Colours and Finishes	C
S210-COX-SGN-ARC-WY-0047	Edinburgh Avenue - Information Zone NS	C
S210-COX-SGN-ARC-WY-0048	Edinburgh Avenue - Information Zone EW	C
S210-COX-SGN-ARC-WY-0049	City South - Information Zone	C
S210-COX-SGN-ARC-WY-0098	Sign Type Index	C
S210-COX-SGN-ARC-WY-0099	Sign Type Index	C
S210-COX-SGN-ARC-WY-0100	Colours, Typography & Iconography	C
S210-COX-SGN-ARC-WY-0101	Station Groundmarking setouts G1	C

Grand total: 19

SCALE @ A1

DRAWING COLOUR CODED - PRINT ALL COPIES IN COLOUR

IC CERTIFICATE NUMBER:

C	APPROVALS ISSUE	PB/10.02.23	AM/10.02.23	IC/10.02.23
B	APPROVALS ISSUE	PB/16.12.22	AM/16.12.22	IC/16.12.22
A	CO-ORDINATION SET - WORK IN PROGRESS	PB/04.11.22	AM/04.11.22	IC/04.11.22
AMD	DESCRIPTION	DESIGNER SIGN/DATE	VERIFIED SIGN/DATE	APPROVED SIGN/DATE
CO-ORDINATE SYSTEM: STROMLO		HEIGHT DATUM: A.H.D.		SCALE:



This drawing is confidential and shall only be used for the purpose of this project.
The signing of this title block confirms the design and drafting of this project have been prepared and checked in accordance with the Canberra Light Rail quality assurance system to ISO 9001-2000.

C O X

DRAWN _____ TIMOTHY YEUNG
DESIGNED _____ PRERNA BHASKAR
DRG CHECK _____ ANDY MEDHURST
DESIGN CHECK _____ IAN CONNOLLY
APPROVED _____ IAN CONNOLLY

NOT FOR CONSTRUCTION
Canberra Light Rail Stage 2A
DESIGN PACKAGE 80 - SIGNAGE AND WAYFINDING

Notes, Legends & Drawings Register			
DESIGN LOT No:	SHEET: 1	OF 1	A1
STATUS: APPROVALS ISSUE	©		
DRG No.	S210-COX-SGN-ARC-WY-0002	EDMS No.	C

DF 6011554

1

2

3

4

5

6

7

8

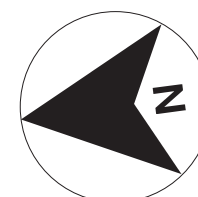
9

10

11

12

Plot Date & Time 8/02/2023 10:47:56 AM



A

B

C

D

E

F

G

H

A

B

C

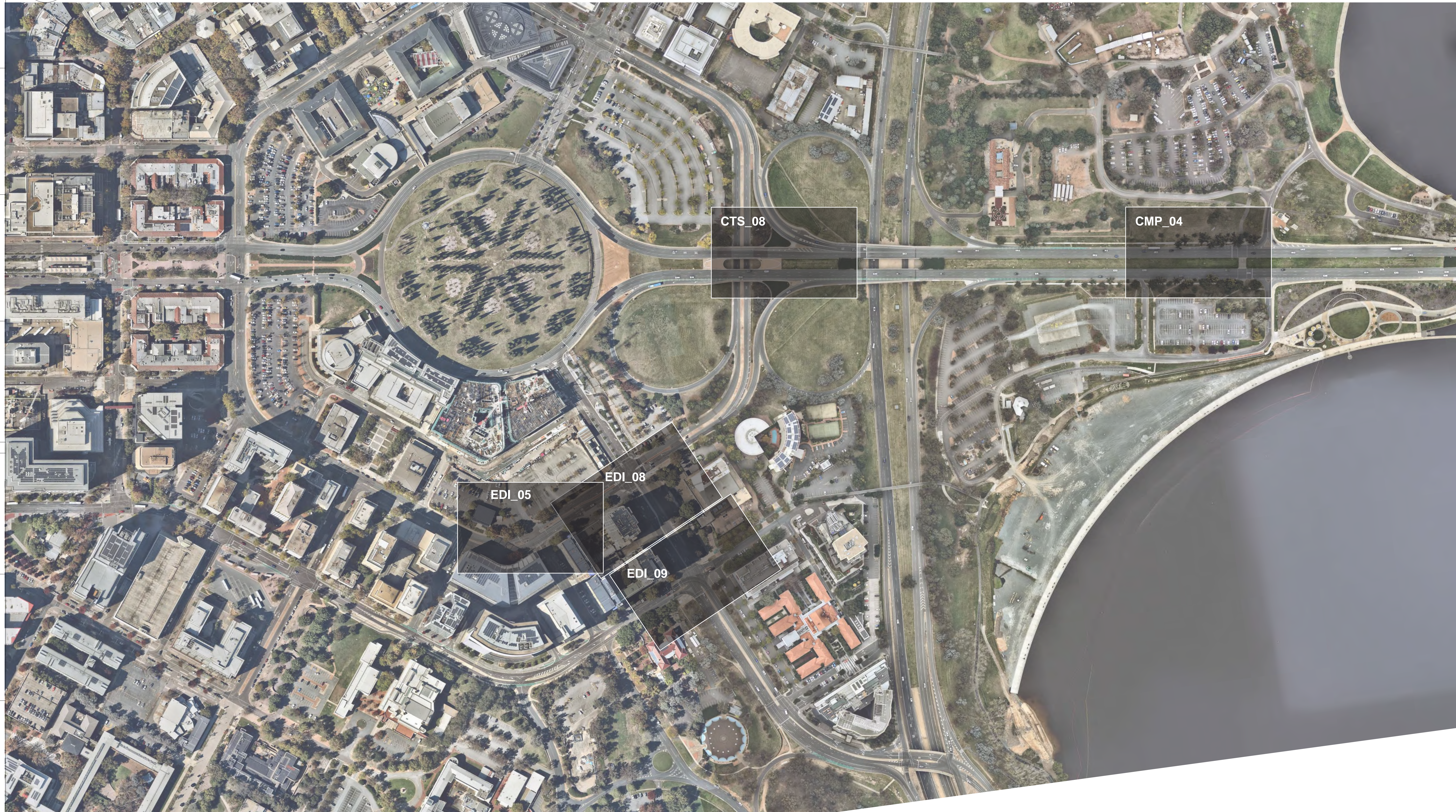
D

E

F

G

H



20 0 20 40 60 80
1 : 2000 FULL SIZE A1
SCALE @ A1

DRAWING COLOUR CODED - PRINT ALL COPIES IN COLOUR

IC CERTIFICATE NUMBER:



This drawing is confidential and shall only be used for the purpose of this project.
The signing of this title block confirms the design and drafting of this project have been prepared and checked in accordance with the Canberra Light Rail quality assurance system to ISO 9001:2000.

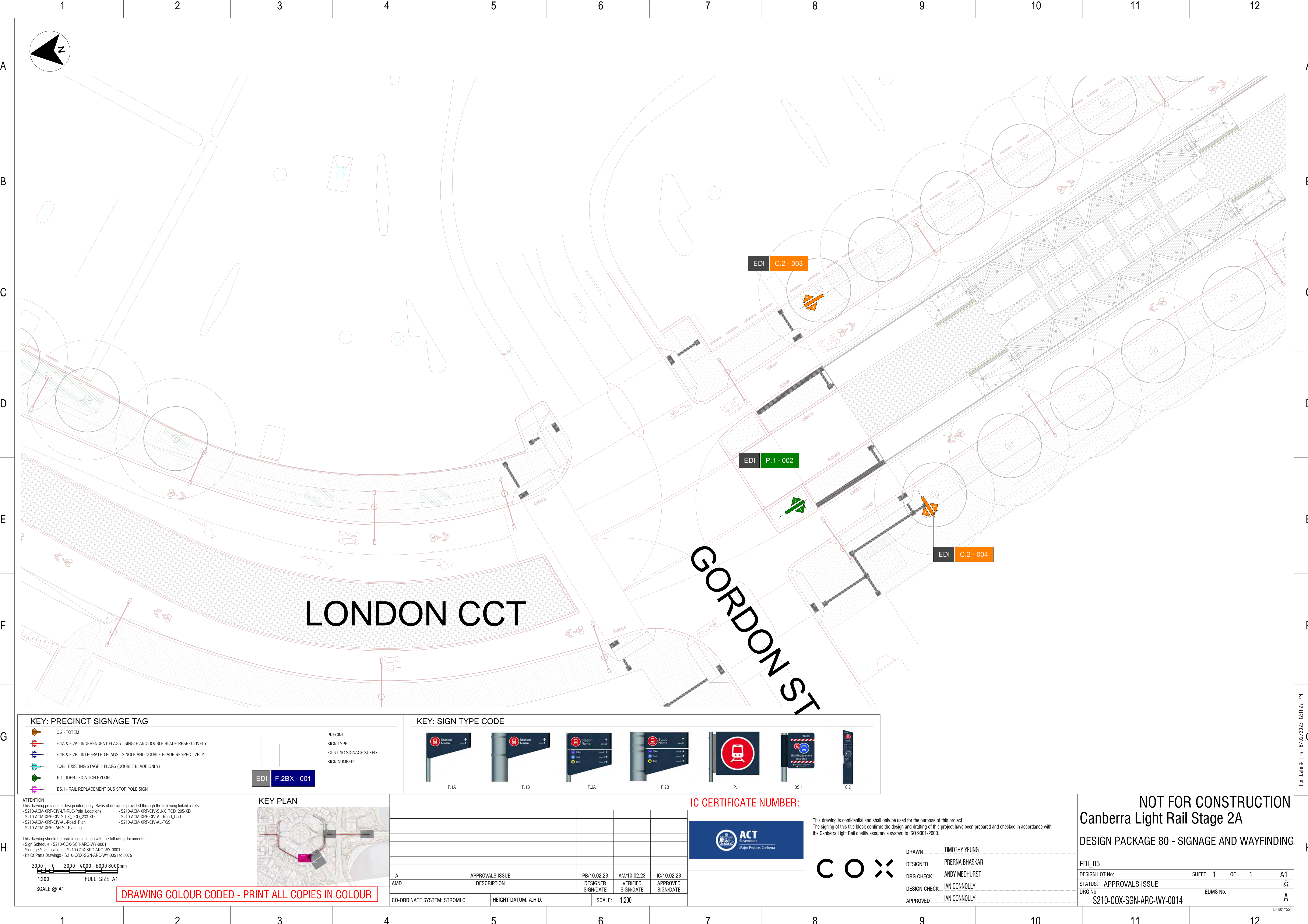
C O X

DRAWN _____ TIMOTHY YEUNG
DESIGNED _____ PRERNA BHASKAR
DRG CHECK _____ ANDY MEDHURST
DESIGN CHECK _____ IAN CONNOLLY
APPROVED _____ IAN CONNOLLY

NOT FOR CONSTRUCTION
Canberra Light Rail Stage 2A

PRECINCT KEY PLAN

DESIGN LOT No:	SHEET: 1 OF 1	A1
STATUS: APPROVALS ISSUE		©
DRG No. S210-COX-SGN-ARC-WY-0004	EDMS No.	C



KEY: PRECINCT SIGNAGE TAG

- C.2 - TOTEM
- F.1A & F.2A - INDEPENDENT FLAGS - SINGLE AND DOUBLE BLADE RESPECTIVELY
- F.1B & F.2B - INTEGRATED FLAGS - SINGLE AND DOUBLE BLADE RESPECTIVELY
- F.2B - EXISTING STAGE 1 FLAGS (DOUBLE BLADE ONLY)
- P.1 - IDENTIFICATION PYLON
- BS.1 - RAIL REPLACEMENT BUS STOP POLE SIGN

- PRECINCT
- SIGN TYPE
- EXISTING SIGNAGE SUFFIX
- SIGN NUMBER

EDI F.2BX - 001

KEY: SIGN TYPE CODE

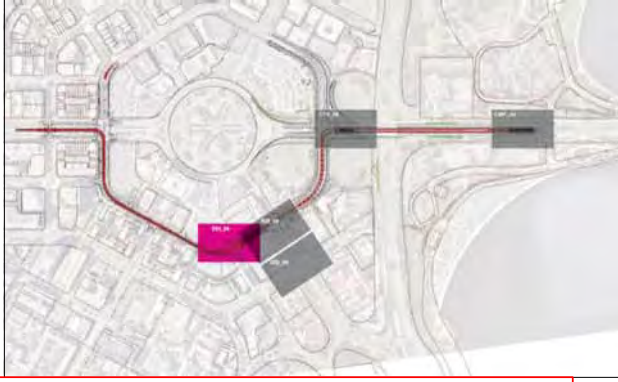


ATTENTION
This drawing provides a design intent only. Basis of design is provided through the following linked x-refs:
- Sign Schedule - S210-COX-SGN-ARC-WY-0001
- S210-ACM-XRF-CIV-LT-RLC-Pole_Locations
- S210-ACM-XRF-CIV-SU-X_TCD_205-XD
- S210-ACM-XRF-CIV-SU-X_TCD_233-XD
- S210-ACM-XRF-CIV-AL-Road_Plan
- S210-ACM-XRF-LAN-SL-Planting
- S210-ACM-XRF-CIV-SU-X_TCD_205-XD
- S210-ACM-XRF-CIV-SU-X_TCD_233-XD
- S210-ACM-XRF-CIV-AL-Road_Plan
- S210-ACM-XRF-LAN-SL-Planting

This drawing should be read in conjunction with the following documents:
- Sign Schedule - S210-COX-SGN-ARC-WY-0001
- Signage Specifications - S210-COX-SPC-ARC-WY-0001
- KIL Of Parts Drawings - S210-COX-SGN-ARC-WY-0051 to 0076



KEY PLAN



IC CERTIFICATE NUMBER:



This drawing is confidential and shall only be used for the purpose of this project.
The signing of this title block confirms the design and drafting of this project have been prepared and checked in accordance with the Canberra Light Rail quality assurance system to ISO 9001-2000.

DRAWN: TIMOTHY YEUNG
DESIGNED: PRERNA BHASKAR
DRG CHECK: ANDY MEDHURST
DESIGN CHECK: IAN CONNOLLY
APPROVED: IAN CONNOLLY

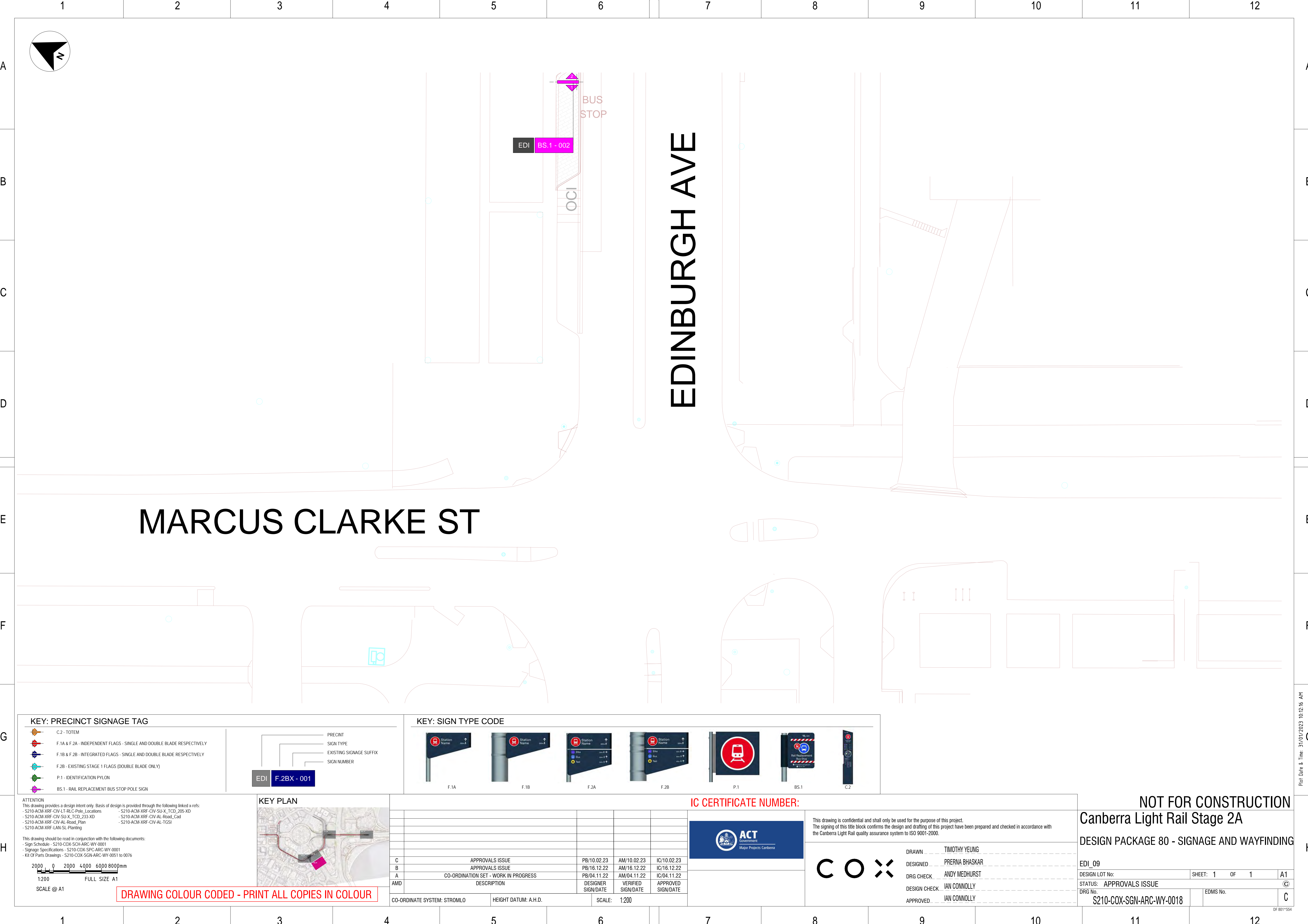
NOT FOR CONSTRUCTION
Canberra Light Rail Stage 2A
DESIGN PACKAGE 80 - SIGNAGE AND WAYFINDING

EDI_05
DESIGN LOT No: SHEET: 1 OF 1 A1
STATUS: APPROVALS ISSUE ©
DRG No. S210-COX-SGN-ARC-WY-0014 EDMS No. A

DRAWING COLOUR CODED - PRINT ALL COPIES IN COLOUR

Plot Date & Time 8/02/2023 12:11:27 PM

DF 6011554



KEY: PRECINCT SIGNAGE TAG

C.2 - TOTEM

F.1A & F.2A - INDEPENDENT FLAGS - SINGLE AND DOUBLE BLADE RESPECTIVELY

F.1B & F.2B - INTEGRATED FLAGS - SINGLE AND DOUBLE BLADE RESPECTIVELY

F.2B - EXISTING STAGE 1 FLAGS (DOUBLE BLADE ONLY)

P.1 - IDENTIFICATION PYLON

BS.1 - RAIL REPLACEMENT BUS STOP POLE SIGN

PRECINCT

SIGN TYPE

EXISTING SIGNAGE SUFFIX

SIGN NUMBER

EDI

F.2BX - 001

KEY: SIGN TYPE CODE

F.1A

F.1B

F.2A

F.2B

P.1

BS.1

C.2

ATTENTION

This drawing provides a design intent only. Basis of design is provided through the following linked x-refs:
- Sign Schedule - S210-COX-SGN-ARC-WY-0001
- S210-ACM-XRF-CIV-LT-RLC-Pole_Locations
- S210-ACM-XRF-CIV-SU-X_TCD_205-XD
- S210-ACM-XRF-CIV-SU-X_TCD_233-XD
- S210-ACM-XRF-CIV-AL-Road_Plan
- S210-ACM-XRF-CIV-AL-TGSI
- S210-ACM-XRF-LAN-SL-Planting

This drawing should be read in conjunction with the following documents:
- Sign Schedule - S210-COX-SGN-ARC-WY-0001
- Signage Specifications - S210-COX-SGN-ARC-WY-0001
- KIL Of Parts Drawings - S210-COX-SGN-ARC-WY-0051 to 0076

2000 0 2000 4000 6000 8000mm

1:200 FULL SIZE A1

SCALE @ A1

DRAWING COLOUR CODED - PRINT ALL COPIES IN COLOUR

KEY PLAN

C	APPROVALS ISSUE	PB/10.02.23	AM/10.02.23	IC/10.02.23
B	APPROVALS ISSUE	PB/16.12.22	AM/16.12.22	IC/16.12.22
A	CO-ORDINATION SET - WORK IN PROGRESS	PB/04.11.22	AM/04.11.22	IC/04.11.22
AMD	DESCRIPTION	DESIGNER SIGN/DATE	VERIFIED SIGN/DATE	APPROVED SIGN/DATE
CO-ORDINATE SYSTEM: STROMLO		HEIGHT DATUM: A.H.D.		SCALE: 1:200

IC CERTIFICATE NUMBER:

This drawing is confidential and shall only be used for the purpose of this project. The signing of this title block confirms the design and drafting of this project have been prepared and checked in accordance with the Canberra Light Rail quality assurance system to ISO 9001-2000.

C O X

DRAWN

DESIGNED

DRG CHECK

DESIGN CHECK

APPROVED

TIMOTHY YEUNG

PRERNA BHASKAR

ANDY MEDHURST

IAN CONNOLLY

IAN CONNOLLY

NOT FOR CONSTRUCTION

Canberra Light Rail Stage 2A

DESIGN PACKAGE 80 - SIGNAGE AND WAYFINDING

EDI_09

DESIGN LOT No:

STATUS: APPROVALS ISSUE

DRG No.

SHEET: 1 OF 1

A1

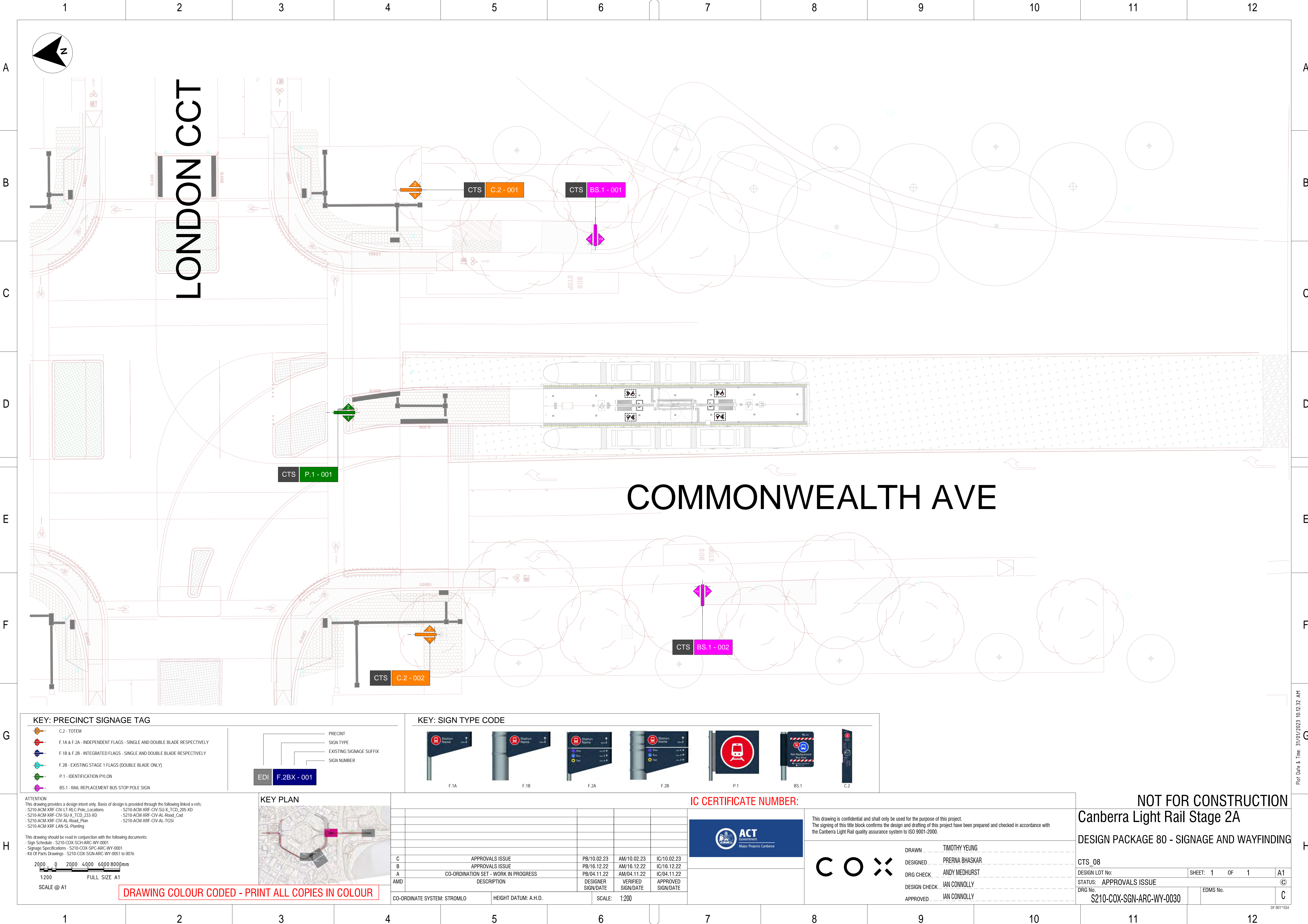
©

C

S210-COX-SGN-ARC-WY-0018

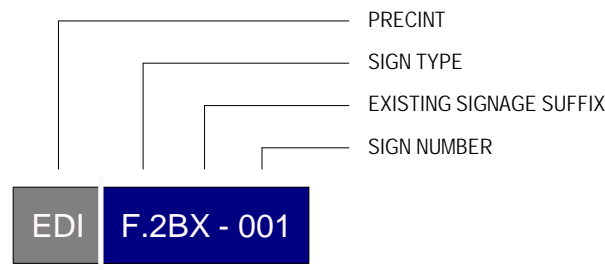
EDMS No.

Plot Date & Time: 31/01/2023 10:12:16 AM



KEY: PRECINCT SIGNAGE TAG

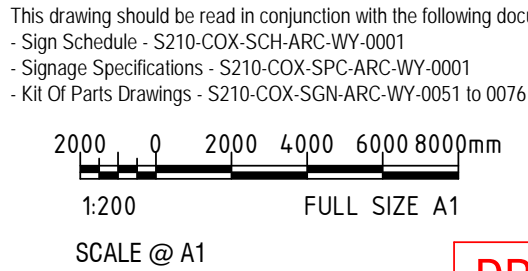
- C.2 - TOTEM
- F.1A & F.2A - INDEPENDENT FLAGS - SINGLE AND DOUBLE BLADE RESPECTIVELY
- F.1B & F.2B - INTEGRATED FLAGS - SINGLE AND DOUBLE BLADE RESPECTIVELY
- F.2B - EXISTING STAGE 1 FLAGS (DOUBLE BLADE ONLY)
- P.1 - IDENTIFICATION PYLON
- BS.1 - RAIL REPLACEMENT BUS STOP POLE SIGN



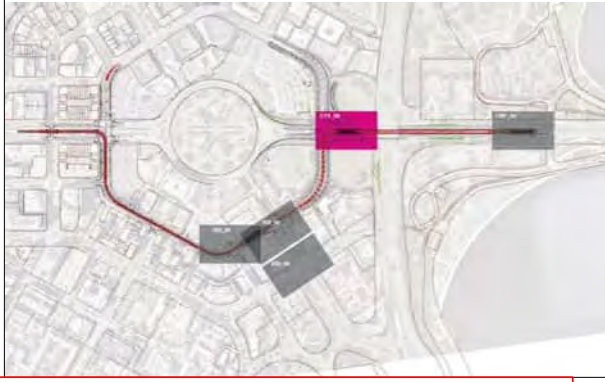
KEY: SIGN TYPE CODE



ATTENTION
This drawing provides a design intent only. Basis of design is provided through the following linked x-refs:
- Sign Schedule - S210-COX-SGN-ARC-WY-0001
- Signage Specifications - S210-COX-SGN-ARC-WY-0001
- KIL Of Parts Drawings - S210-COX-SGN-ARC-WY-0001 to 0076



KEY PLAN



IC CERTIFICATE NUMBER:



This drawing is confidential and shall only be used for the purpose of this project.
The signing of this title block confirms the design and drafting of this project have been prepared and checked in accordance with the Canberra Light Rail quality assurance system to ISO 9001-2000.

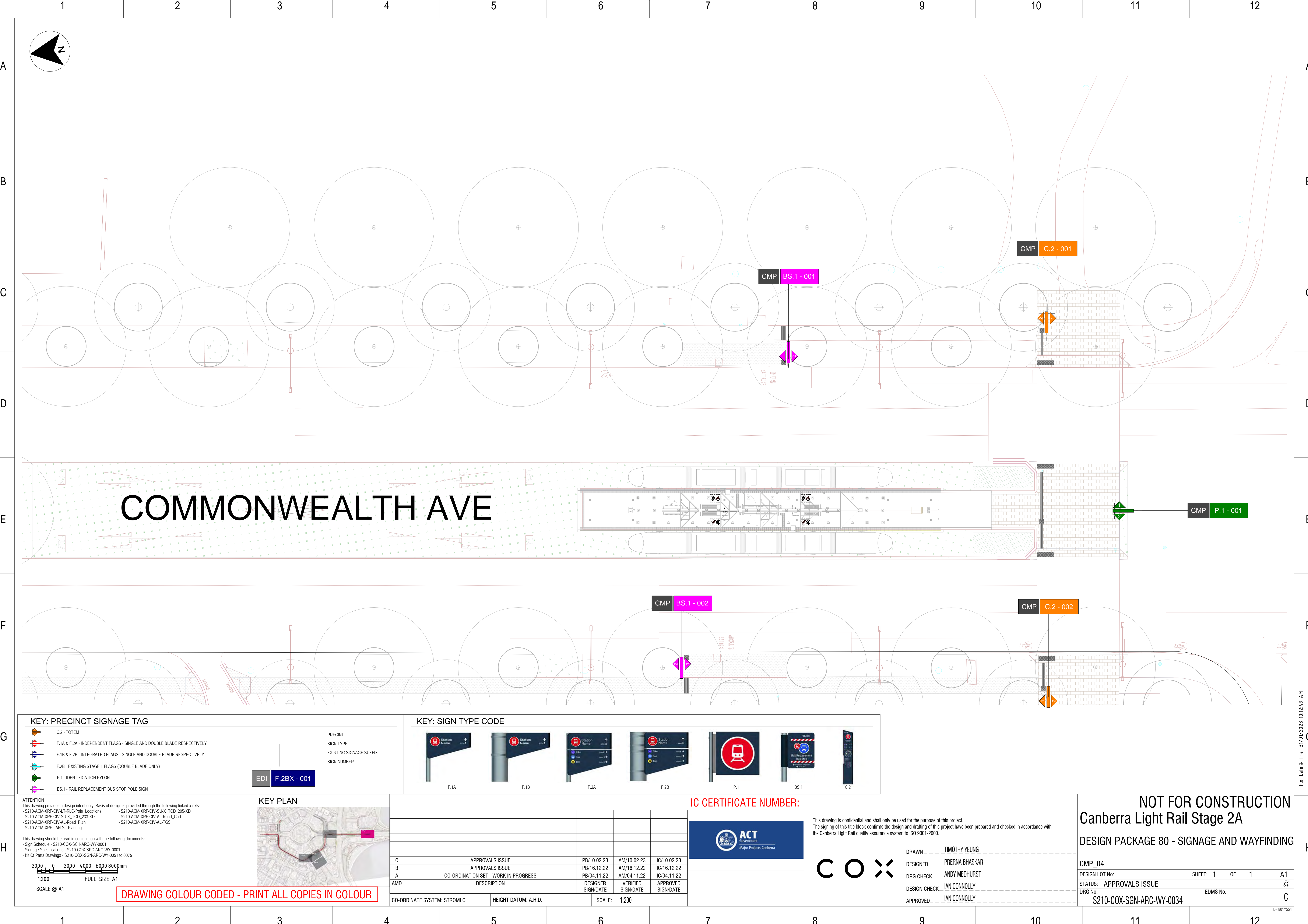
DRAWN TIMOTHY YEUNG
DESIGNED PRERNA BHASKAR
DRG CHECK ANDY MEDHURST
DESIGN CHECK IAN CONNOLLY
APPROVED IAN CONNOLLY

NOT FOR CONSTRUCTION
Canberra Light Rail Stage 2A

DESIGN PACKAGE 80 - SIGNAGE AND WAYFINDING

CTS_08	DESIGN LOT No:	SHEET: 1 OF 1	A1
STATUS: APPROVALS ISSUE	DRG No.	EDMS No.	C
S210-COX-SGN-ARC-WY-0030			

Plot Date & Time 31/01/2023 10:12:32 AM



KEY: PRECINCT SIGNAGE TAG

C.2 - TOTEM

F.1A & F.2A - INDEPENDENT FLAGS - SINGLE AND DOUBLE BLADE RESPECTIVELY

F.1B & F.2B - INTEGRATED FLAGS - SINGLE AND DOUBLE BLADE RESPECTIVELY

F.2B - EXISTING STAGE 1 FLAGS (DOUBLE BLADE ONLY)

P.1 - IDENTIFICATION PYLON

BS.1 - RAIL REPLACEMENT BUS STOP POLE SIGN

EDI

F.2BX - 001

PRECINCT

SIGN TYPE

EXISTING SIGNAGE SUFFIX

SIGN NUMBER

KEY: SIGN TYPE CODE

F.1A

F.1B

F.2A

F.2B

P.1

BS.1

C.2

ATTENTION

This drawing provides a design intent only. Basis of design is provided through the following linked x-refs:
- Sign Schedule - S210-COX-SGN-ARC-WY-0001
- S210-ACM-XRF-CIV-LT-RLC-Pole_Locations
- S210-ACM-XRF-CIV-SU-X_TCD_205-XD
- S210-ACM-XRF-CIV-SU-X_TCD_233-XD
- S210-ACM-XRF-CIV-AL-Road_Plan
- S210-ACM-XRF-CIV-AL-TGSI
- S210-ACM-XRF-LAN-SL-Planting

This drawing should be read in conjunction with the following documents:
- Sign Schedule - S210-COX-SGN-ARC-WY-0001
- Signage Specifications - S210-COX-SGN-ARC-WY-0001
- KIL Of Parts Drawings - S210-COX-SGN-ARC-WY-0001 to 0076

2000 0 2000 4000 6000 8000mm

1:200 FULL SIZE A1

SCALE @ A1

DRAWING COLOUR CODED - PRINT ALL COPIES IN COLOUR

KEY PLAN

C	APPROVALS ISSUE	PB/10.02.23	AM/10.02.23	IC/10.02.23
B	APPROVALS ISSUE	PB/16.12.22	AM/16.12.22	IC/16.12.22
A	CO-ORDINATION SET - WORK IN PROGRESS	PB/04.11.22	AM/04.11.22	IC/04.11.22
AMD	DESCRIPTION	DESIGNER SIGN/DATE	VERIFIED SIGN/DATE	APPROVED SIGN/DATE
CO-ORDINATE SYSTEM: STROMLO		HEIGHT DATUM: A.H.D.		SCALE: 1:200

IC CERTIFICATE NUMBER:

This drawing is confidential and shall only be used for the purpose of this project.
The signing of this title block confirms the design and drafting of this project have been prepared and checked in accordance with the Canberra Light Rail quality assurance system to ISO 9001-2000.

DRAWN

DESIGNED

DRG CHECK

DESIGN CHECK

APPROVED

TIMOTHY YEUNG

PRERNA BHASKAR

ANDY MEDHURST

IAN CONNOLLY

IAN CONNOLLY

NOT FOR CONSTRUCTION

Canberra Light Rail Stage 2A

DESIGN PACKAGE 80 - SIGNAGE AND WAYFINDING

CMP_04

DESIGN LOT No:

STATUS: APPROVALS ISSUE

DRG No.

S210-COX-SGN-ARC-WY-0034

SHEET: 1 OF 1

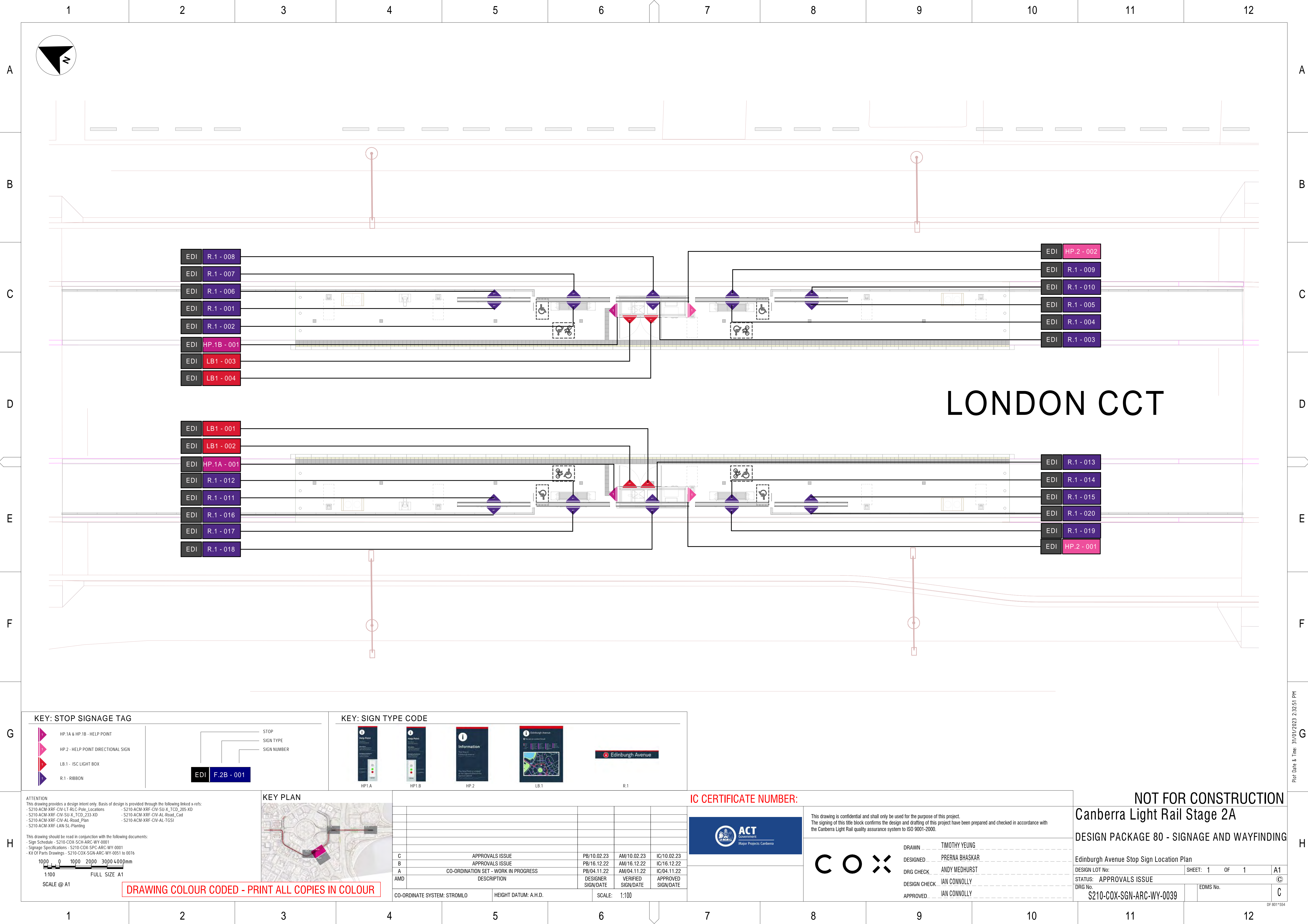
A1

©

EDMS No.

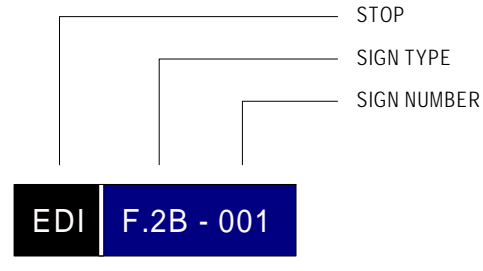
C

Plot Date & Time 31/01/2023 10:12:49 AM



KEY: STOP SIGNAGE TAG

- HP.1A & HP.1B - HELP POINT
- HP.2 - HELP POINT DIRECTIONAL SIGN
- LB.1 - ISC LIGHT BOX
- R.1 - RIBBON



KEY: SIGN TYPE CODE

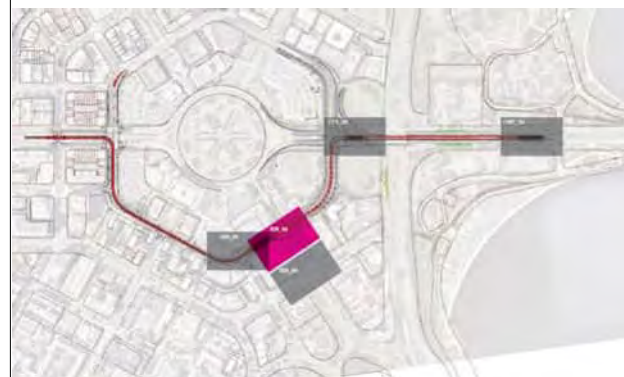


ATTENTION:
This drawing provides a design intent only. Basis of design is provided through the following linked x-refs:
- S210-ACM-XRF-CIV-LT-RLC-Pole_Locations
- S210-ACM-XRF-CIV-SU-X-TCD_205-XD
- S210-ACM-XRF-CIV-SU-X-TCD_233-XD
- S210-ACM-XRF-CIV-AL-Road_Cad
- S210-ACM-XRF-CIV-AL-Road_Plan
- S210-ACM-XRF-LAN-SL-Planting

This drawing should be read in conjunction with the following documents:
- Sign Schedule - S210-COX-SCH-ARC-WY-0001
- Signage Specifications - S210-COX-SPC-ARC-WY-0001
- Kit Of Parts Drawings - S210-COX-SGN-ARC-WY-0051 to 0076

1000 0 1000 2000 3000 4000mm
1:100 FULL SIZE A1
SCALE @ A1

KEY PLAN



IC CERTIFICATE NUMBER:



This drawing is confidential and shall only be used for the purpose of this project.
The signing of this title block confirms the design and drafting of this project have been prepared and checked in accordance with the Canberra Light Rail quality assurance system to ISO 9001-2000.

C O X

DRAWN TIMOTHY YEUNG
DESIGNED PRERNA BHASKAR
DRG CHECK ANDY MEDHURST
DESIGN CHECK IAN CONNOLLY
APPROVED IAN CONNOLLY

NOT FOR CONSTRUCTION

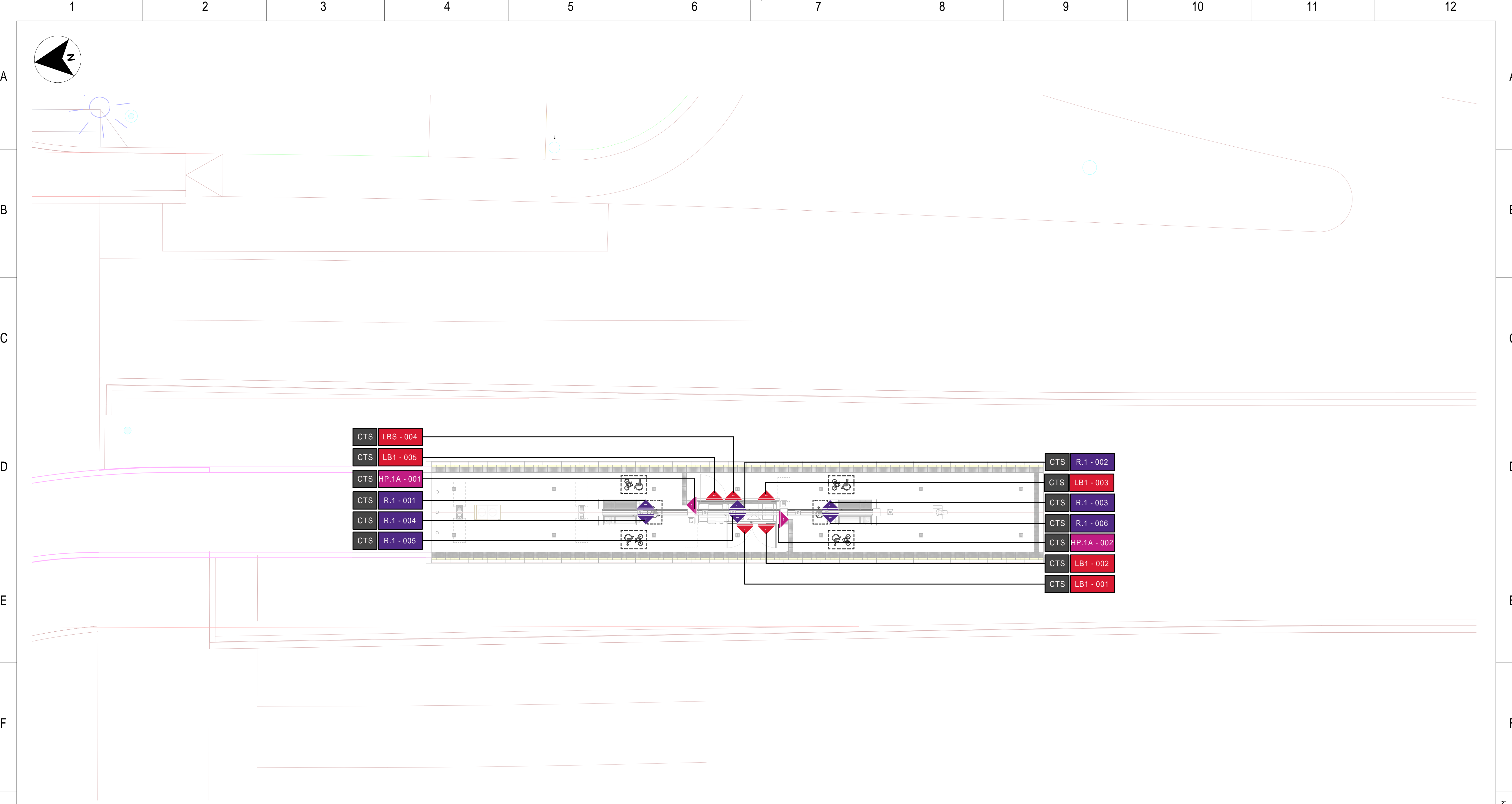
Canberra Light Rail Stage 2A

DESIGN PACKAGE 80 - SIGNAGE AND WAYFINDING

Edinburgh Avenue Stop Sign Location Plan
DESIGN LOT No: SHEET: 1 OF 1 A1
STATUS: APPROVALS ISSUE ©
DRG No. S210-COX-SGN-ARC-WY-0039 EDMS No. C

Plot Date & Time 31/01/2023 2:32:51 PM

DF 6011554



KEY: STOP SIGNAGE TAG

HP 1A & HP 1B - HELP POINT

HP 2 - HELP POINT DIRECTIONAL SIGN

LB.1 - ISC LIGHT BOX

R.1 - RIBBON

EDI

F.2B - 001

KEY: SIGN TYPE CODE

HP1.A

HP1.B

HP.2

LB.1

R.1

ATTENTION

This drawing provides a design intent only. Basis of design is provided through the following linked x-refs:

- S210-ACM-XRF-CIV-LT-RLC-Pole_Locations
- S210-ACM-XRF-CIV-SU-X_TCD_205.XD
- S210-ACM-XRF-CIV-SU-X_TCD_233.XD
- S210-ACM-XRF-CIV-AL-Road_Cad
- S210-ACM-XRF-CIV-AL-Road_Plan
- S210-ACM-XRF-CIV-AL-TGSI
- S210-ACM-XRF-LAN-SL-Planting

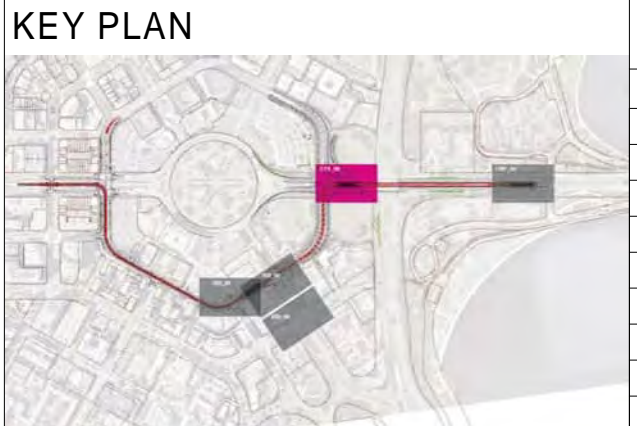
This drawing should be read in conjunction with the following documents:

- Sign Schedule - S210-COX-SCH-ARC-WY-0001
- Signage Specifications - S210-COX-SPC-ARC-WY-0001
- Kit Of Parts Drawings - S210-COX-SGN-ARC-WY-0001 to 0076

10000 0 1000 2000 3000 4000mm

1:100 FULL SIZE A1

SCALE @ A1



CO-ORDINATE SYSTEM: STROMLO		HEIGHT DATUM: A.H.D.		SCALE: 1:100	
C	APPROVALS ISSUE	PB/10.02.23	AM/10.02.23	IC/10.02.23	
B	APPROVALS ISSUE	PB/16.12.22	AM/16.12.22	IC/16.12.22	
A	CO-ORDINATION SET - WORK IN PROGRESS	PB/04.11.22	AM/04.11.22	IC/04.11.22	
AMD	DESCRIPTION	DESIGNER SIGN/DATE	VERIFIED SIGN/DATE	APPROVED SIGN/DATE	

IC CERTIFICATE NUMBER:

ACT

Government

Major Projects Canberra

C O X

DRAWN

TIMOTHY YEUNG

DESIGNED

PRERNA BHASKAR

DRG CHECK

ANDY MEDHURST

DESIGN CHECK

IAN CONNOLLY

APPROVED

IAN CONNOLLY

NOT FOR CONSTRUCTION

Canberra Light Rail Stage 2A

DESIGN PACKAGE 80 - SIGNAGE AND WAYFINDING

City South Stop Sign Location Plan

DESIGN LOT No:

SHEET: 1 OF 1

A1

STATUS: APPROVALS ISSUE

©

DRG No.

S210-COX-SGN-ARC-WY-0040

EDMS No.

C

DRAWING COLOUR CODED - PRINT ALL COPIES IN COLOUR

Plot Date & Time: 31/01/2023 2:34:34 PM

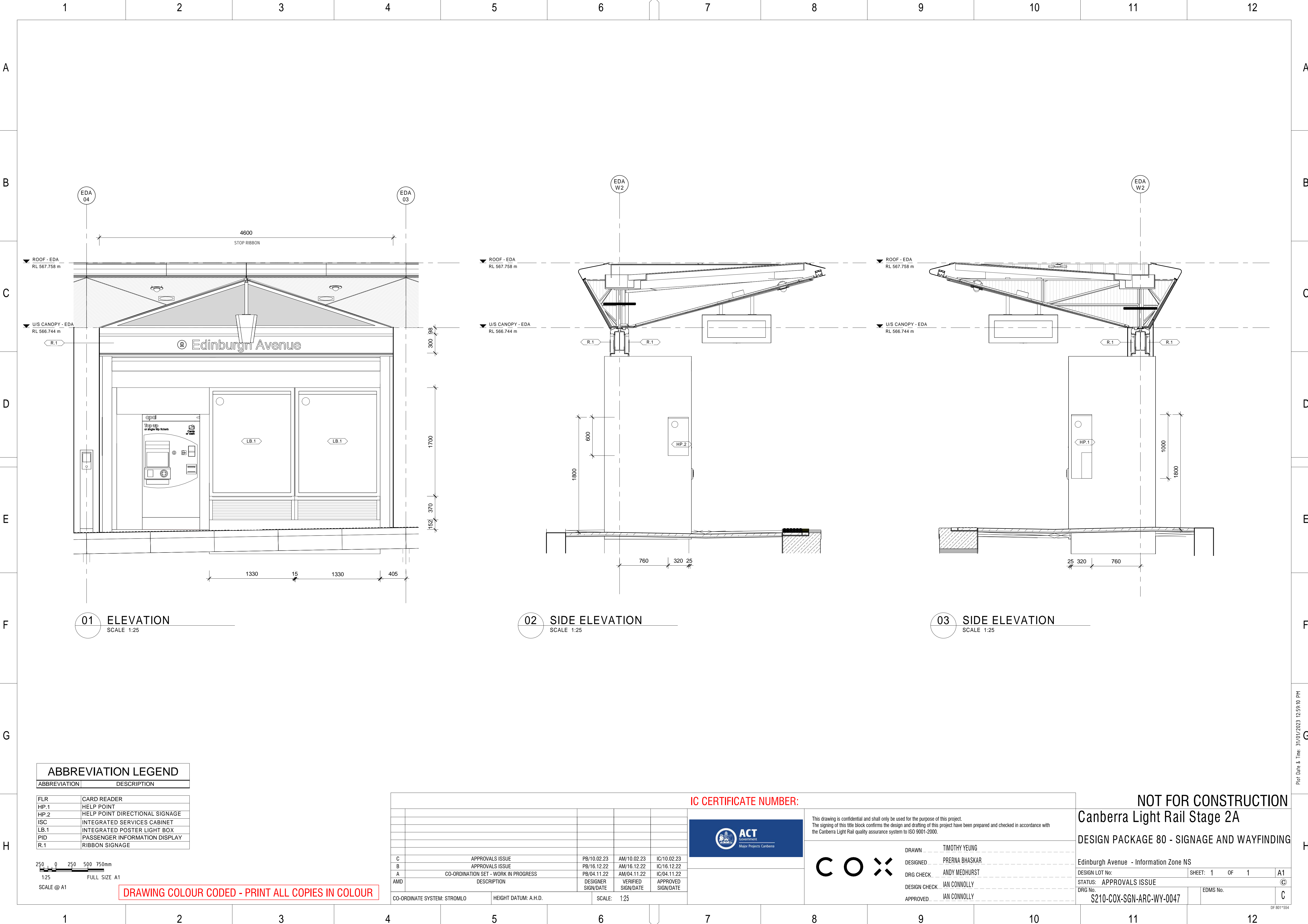
1	2	3	4	5	6	7	8	9	10	11	12
<h1>Materials, Colours and Finishes</h1>											
<div><div><div>3. Materials and Manufacturing</div><div><div>3.1(a). Alternative materials.</div><div>Alternative materials shall not be considered for use without written approval from Transport Canberra.</div></div><div><div>3.1(b). Proprietary products.</div><div>Where proprietary products are used, the Manufacturer’s instructions and specifications shall be strictly adhered to. Subcontractor is to submit a statement describing what warranties exist regarding the availability of the product over the life of the application, and price structures used for purchases over the period of the life of the application.</div></div><div><div>3.1(c). Finishes generally.</div><div>Edges and surfaces should be clean, neat and free from burrs and indentations. All sharp edges to be rounded off to prevent cutting, without excessive radial edges. All visible joints in materials shall be even. All visible joints are to be specifically approved on shop drawings for functional or visual requirements.</div></div><div><div>3.1(d). Joints.</div><div>Contractor shall show visible joints of materials on shop drawings. No joints shall appear in end product that were not recorded in shop drawings.</div></div><div><div>3.1(e). Welding.</div><div>All welding shall be carried out in accordance with AS 1554 and other applicable Australian Standards. Welded, brazed or soldered joints on exposed surfaces shall be ground, buffed or polished as applicable to the material and specified finish. There shall be no buckling or visible surface colour variations in exposed material metal finishes. Aluminium All welding shall be carried out in accordance with AS 1665 using techniques to avoid buckling and discolouration.</div></div><div><div>3.1(f). Fastenings.</div><div>Fastenings, including anchors, lugs, screws, rivets, double sided tape and the like shall be appropriate to the work, capable of transmitting the loads and stresses imposed, and sufficient to ensure the rigidity of the assembly. Fastenings should not be exposed unless specifically detailed on shop drawings and approved. All visible fasteners are to be specifically approved on shop drawings for functional or visual requirements. Base plates and fastening applicable for sign footings must be concealed and set below the finished ground level.</div></div></div><div><div>3.1(g). Double sided VHB tapes.</div><div>Only 3M VHB tapes will be used where approved. Tapes to be applied in accordance with manufacturers instructions. Subcontractor to provide certification of the tapes and application systems used.</div></div><div><div>3.1(h). Paint finishes.</div><div>Paints will be a ‘Dulux’ specification. Apply paint finishes according to the paint manufacturer’s instructions, using the specified tools and materials. Subcontractor to provide certification of the paints and application systems used. Colours of paint finishes are to match Pantone colours specified or suitable equivalent.</div></div><div><div>3.1(i). Anti-Graffiti Coating.</div><div>'Dulux' Durethane™ Clear Polyester Urethane PC 410, Two pack applied in 'Low Sheen' finish. Apply paint finishes according to the paint manufacturer’s instructions, using the specified tools and materials. Subcontractor to provide prototype of finish for approval, along with certification of the paints and application systems used.</div></div><div><div>3.1(j). Electrical.</div><div>All electrical work is to be executed according to the relevant Australian Standards and Building Codes. All electrical equipment is to be tested, certified and tagged before commissioning and hand-over, and must meet the client requirements.</div></div><div><div>3.1(k). Digital printing.</div><div>Digitally printed graphics shall be applied using appropriate inks, printing methods printed medium and laminates for the environment the item is to be used in and the expected quality level of the item. Colours must not fade over a minimum period of five years. Contractor is to provide certification of the materials and printing systems used.</div></div><div><div>3.1(l). Vinyl lettering.</div><div>Only Avery 900 Super Cast Series / 3M Scotchcal or approved equivalent. Contractor to provide certification of the materials used.</div></div><div><div>3.1(m). LED Lights.</div><div>“Samsung”, 'AgiLight' or ‘Ledall’ LED lights or equivalent industry standard to be used. Contractor to ensure colour temperature is consistent as specified and even illumination without ‘hot spots’. LED lights for internal signage must be consistent. LED of all external signage must be consistent. All lighting must be tested within the proposed environment.</div></div></div> <div><div>3.1(n). Acrylic.</div><div>Contractor to advise suitable acrylic for individual components. Where an opaque coloured finish is required, clear acrylic should be used with a 2 pac paint finish. Where a translucent coloured finish is required, translucent self adhesive film should be used onto a clear acrylic substrate.</div></div> <div><div>3.2 Implementation</div><div><div>3.2(a) Installation locations.</div><div>Installation locations for each item will be generally indicated on supplied plans. Generic installation instructions will be supplied as a guide. In the event of conflict between the text of the plans or instructions and the situation on site, the subcontractor is to make final determination on installation for each sign application, which must be approved by Canberra Metro before work commences. No part of the documentation supersedes applicable laws and regulations unless a specific exemption has been obtained.</div></div><div><div>3.2(b) Operation and Maintenance Manuals.</div><div>The Subcontractor shall provide comprehensive Operation and Maintenance Manuals (OMM). As a minimum, the OMM's must include the following sections: - Scope of Works: A summary of works undertaken, and a description of the methods of construction/installation. - Product Guide: A schedule of the products used, and any product technical information. - Cleaning & Maintenance: A detailed description of the maintenance and cleaning requirements, including a detailed schedule of equipment and maintenance periods. - Suppliers: A schedule of suppliers details for the products. - Details of fixing methods. The Subcontractor is to provide four sets of OMM's in hard cover folders, and two CD's with electronic sets of the OMM's in PDF format.</div></div></div>											

GENERAL NOTES:					IC CERTIFICATE NUMBER:					NOT FOR CONSTRUCTION									
THIS DRAWING SHOULD BE READ IN CONJUNCTION WITH THE FOLLOWING DOCUMENTS: NORTHBOURNE & EDINBURGH AVENUE PRECINCT KEY PLAN - S210-COX-SGN-ARC-WY-0004 CITY SOUTH PRECINCT KEY PLAN - S210-COX-SGN-ARC-WY-0005 COMMONWEALTH PARK PRECINCT KEY PLAN - S210-COX-SGN-ARC-WY-0006					<div><div><div></div><div>ACT Government Major Projects Canberra</div></div></div>					This drawing is confidential and shall only be used for the purpose of this project. The signing of this title block confirms the design and drafting of this project have been prepared and checked in accordance with the Canberra Light Rail quality assurance system to ISO 9001:2000.									
<div><div>C</div><div>APPROVALS ISSUE</div><div>PB/10.02.23</div><div>AM/10.02.23</div><div>IC/10.02.23</div></div>					<div><div>C O X</div></div>					<div><div>DRAWN</div><div>TIMOTHY YEUNG</div><div>DESIGNED</div><div>PRERNA BHASKAR</div><div>DRG CHECK</div><div>ANDY MEDHURST</div><div>DESIGN CHECK</div><div>IAN CONNOLLY</div><div>APPROVED</div><div>IAN CONNOLLY</div></div>					<div><div>MATERIALS, COLOURS AND FINISHES</div><div>DESIGN LOT No:</div><div>SHEET: 1 OF 1</div><div>A1</div><div>STATUS: APPROVALS ISSUE</div><div>DRG No.</div><div>S210-COX-SGN-ARC-WY-0046</div><div>EDMS No.</div><div>C</div></div>				
CO-ORDINATE SYSTEM: STROMLO					HEIGHT DATUM: A.H.D.					SCALE:									

SCALE @ A1

DRAWING COLOUR CODED - PRINT ALL COPIES IN COLOUR

DF 8011554



ABBREVIATION LEGEND	
ABBREVIATION	DESCRIPTION
FLR	CARD READER
HP.1	HELP POINT
HP.2	HELP POINT DIRECTIONAL SIGNAGE
ISC	INTEGRATED SERVICES CABINET
LB.1	INTEGRATED POSTER LIGHT BOX
PID	PASSENGER INFORMATION DISPLAY
R.1	RIBBON SIGNAGE

IC CERTIFICATE NUMBER:				
C	APPROVALS ISSUE	PB/10.02.23	AM/10.02.23	IC/10.02.23
B	APPROVALS ISSUE	PB/16.12.22	AM/16.12.22	IC/16.12.22
A	CO-ORDINATION SET - WORK IN PROGRESS	PB/04.11.22	AM/04.11.22	IC/04.11.22
AMD	DESCRIPTION	DESIGNER SIGN/DATE	VERIFIED SIGN/DATE	APPROVED SIGN/DATE
CO-ORDINATE SYSTEM: STROMLO		HEIGHT DATUM: A.H.D.		SCALE: 1:25



This drawing is confidential and shall only be used for the purpose of this project. The signing of this title block confirms the design and drafting of this project have been prepared and checked in accordance with the Canberra Light Rail quality assurance system to ISO 9001-2000.

COX

DRAWN TIMOTHY YEUNG
DESIGNED PRERNA BHASKAR
DRG CHECK ANDY MEDHURST
DESIGN CHECK IAN CONNOLLY
APPROVED IAN CONNOLLY

NOT FOR CONSTRUCTION

Canberra Light Rail Stage 2A

DESIGN PACKAGE 80 - SIGNAGE AND WAYFINDING

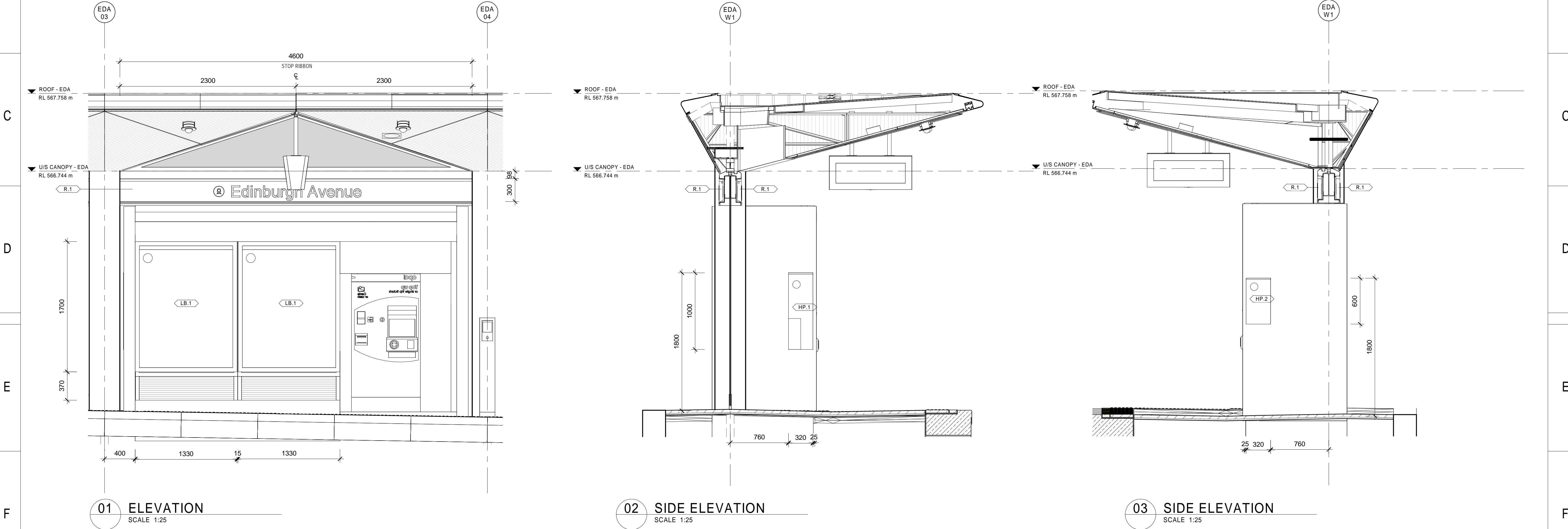
Edinburgh Avenue - Information Zone NS

DESIGN LOT No: SHEET: 1 OF 1 A1

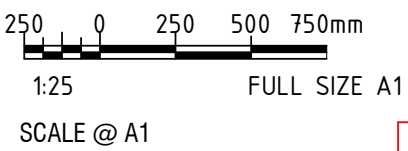
STATUS: APPROVALS ISSUE ©

DRG No. S210-COX-SGN-ARC-WY-0047

EDMS No. C



ABBREVIATION LEGEND	
ABBREVIATION	DESCRIPTION
FLR	CARD READER
HP.1	HELP POINT
HP.2	HELP POINT DIRECTIONAL SIGNAGE
ISC	INTEGRATED SERVICES CABINET
LB.1	INTEGRATED POSTER LIGHT BOX
PID	PASSENGER INFORMATION DISPLAY
R.1	RIBBON SIGNAGE



DRAWING COLOUR CODED - PRINT ALL COPIES IN COLOUR

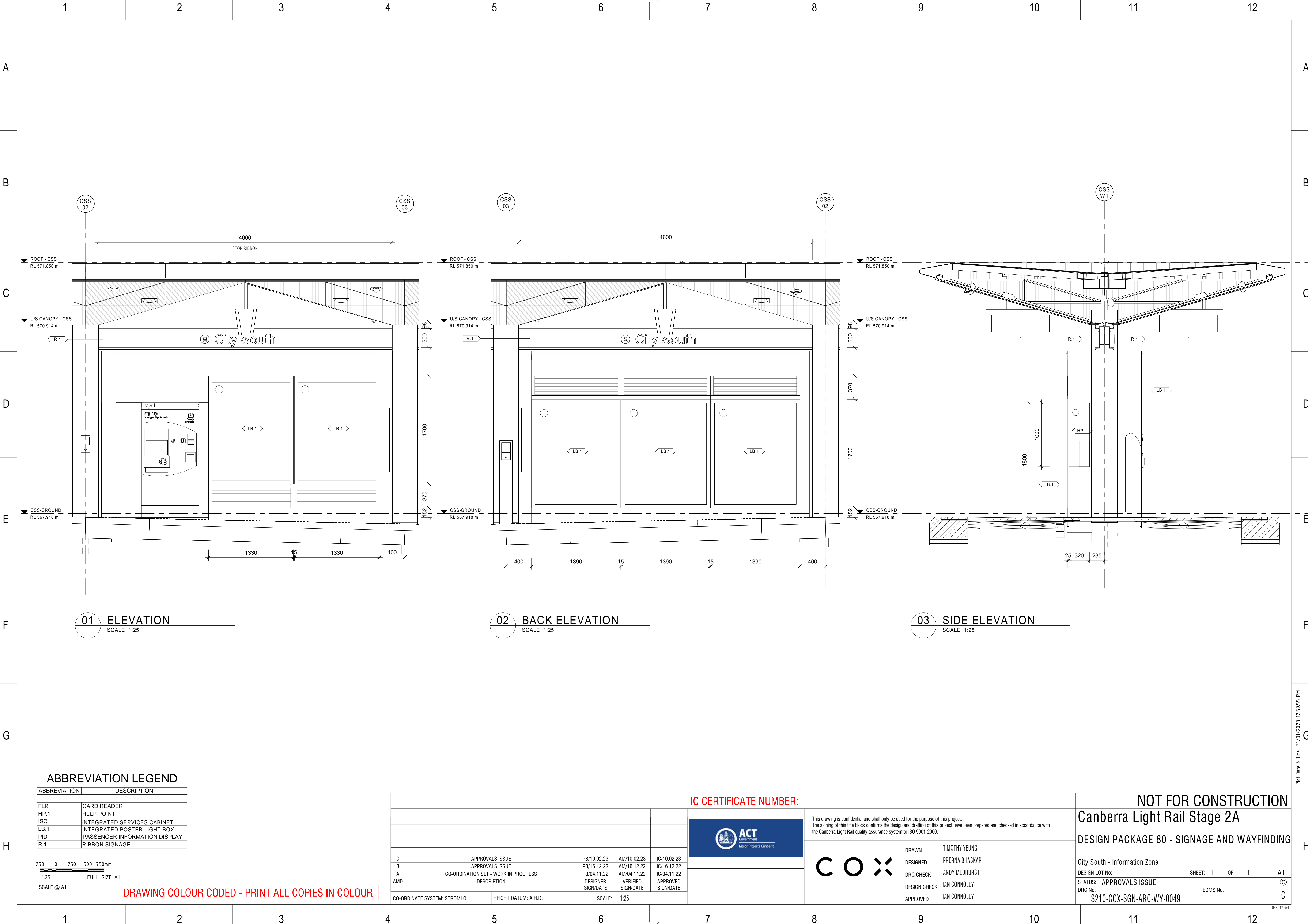
IC CERTIFICATE NUMBER:				
C	APPROVALS ISSUE	PB/10.02.23	AM/10.02.23	IC/10.02.23
B	APPROVALS ISSUE	PB/16.12.22	AM/16.12.22	IC/16.12.22
A	CO-ORDINATION SET - WORK IN PROGRESS	PB/04.11.22	AM/04.11.22	IC/04.11.22
AMD	DESCRIPTION	DESIGNER SIGN/DATE	VERIFIED SIGN/DATE	APPROVED SIGN/DATE
CO-ORDINATE SYSTEM: STROMLO		HEIGHT DATUM: A.H.D.		SCALE: 1:25



This drawing is confidential and shall only be used for the purpose of this project. The signing of this title block confirms the design and drafting of this project have been prepared and checked in accordance with the Canberra Light Rail quality assurance system to ISO 9001-2000.

DRAWN	TIMOTHY YEUNG
DESIGNED	PRERNA BHASKAR
DRG CHECK	ANDY MEDHURST
DESIGN CHECK	IAN CONNOLLY
APPROVED	IAN CONNOLLY

NOT FOR CONSTRUCTION			
Canberra Light Rail Stage 2A			
DESIGN PACKAGE 80 - SIGNAGE AND WAYFINDING			
Edinburgh Avenue - Information Zone EW			
DESIGN LOT No:	SHEET: 1	OF 1	A1
STATUS: APPROVALS ISSUE	©		
DRG No.	S210-COX-SGN-ARC-WY-0048		C
EDMS No.			





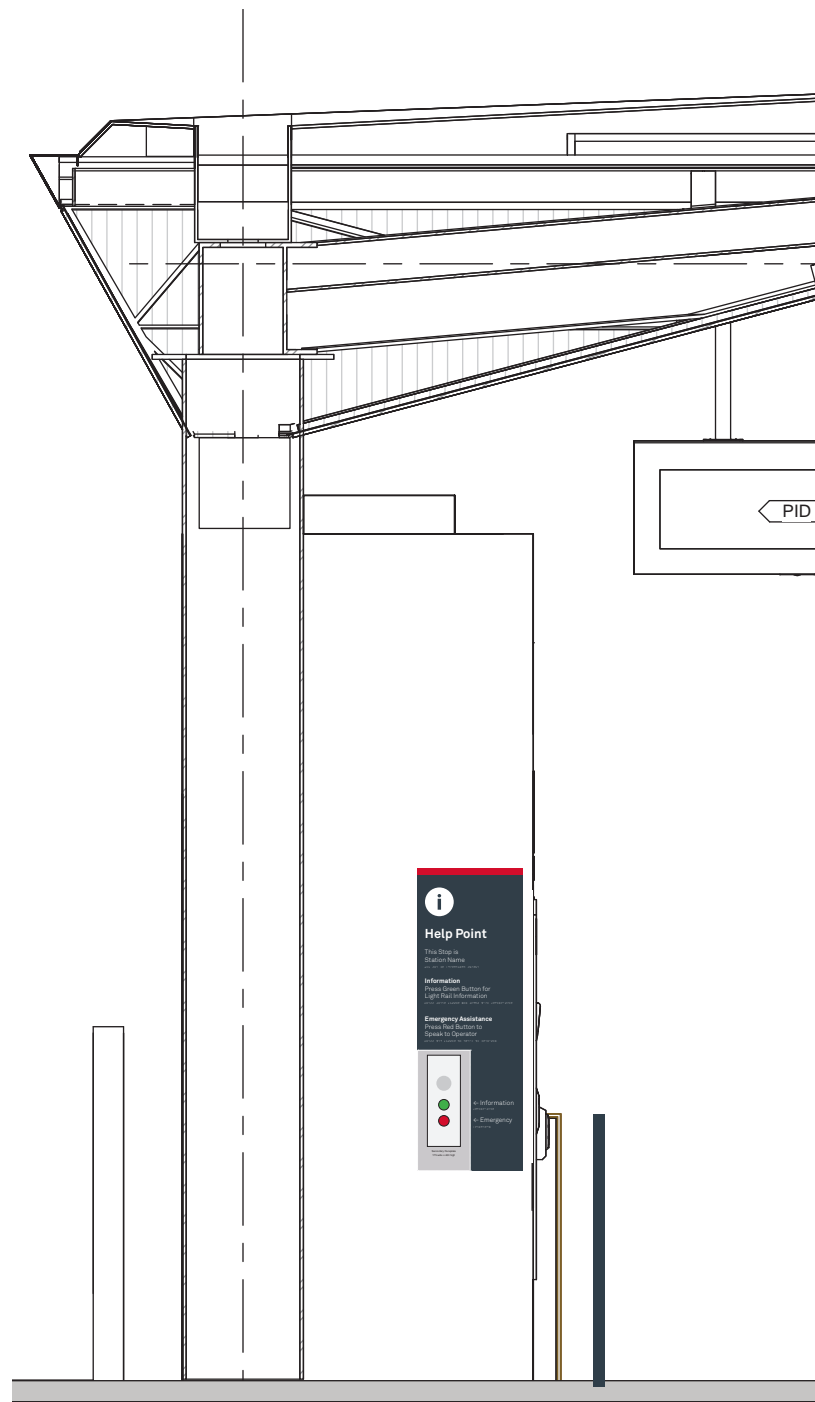
R.1

Station Ribbon R.1
Location: On light rail stop canopy structure
Purpose: Identify light rail stop
Materials: Aluminium, Intracut lettering/icon
Illuminated: Yes
Scale: 1:25



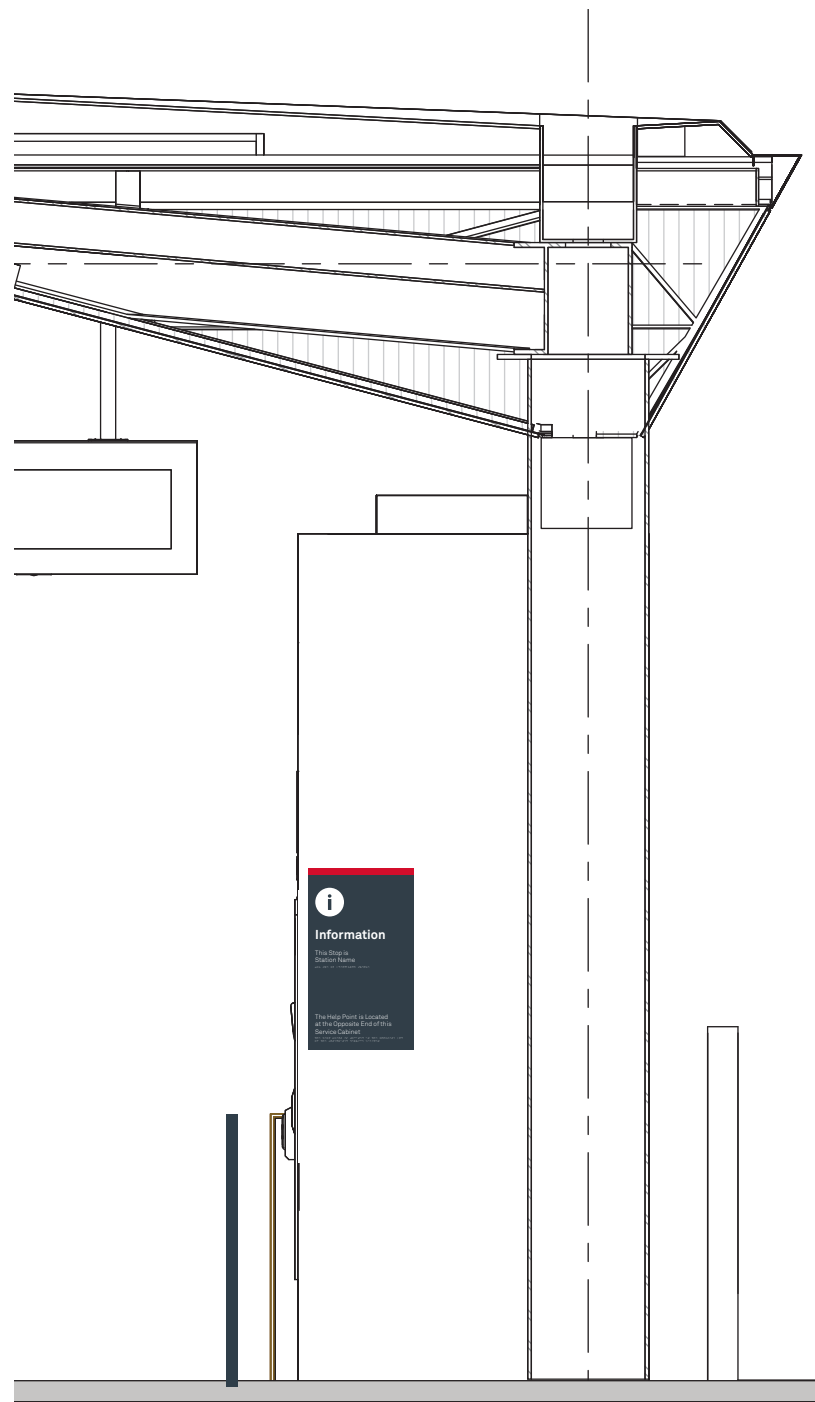
LB.1

Station Ribbon R.1
Location: In light rail stop integrated service cabinet
Purpose: Identify light rail stop, identify and direct to local points of interest, display light rail timetable and route map
Materials: digitally printed vinyl
Illuminated: Yes
Scale: 1:25



HP.1

Help Point HP.1
Location: On light rail stop canopy structure
Purpose: Identify help point, provide instructions for use, braille and tactile information
Materials: aluminium
Illuminated: No
Scale: 1:25



HP.2

Help Point HP.2
Location: On light rail stop canopy structure
Purpose: Direct to help point location, braille and tactile information
Materials: aluminium
Illuminated: No
Scale: 1:25



G.1

Accessible Ground Marking
Location: On platform
Purpose: Identify designated wheelchair waiting zone
Materials: Paint
Illuminated: No
Scale: 1:25



G.2

Accessible + Cyclist Ground Marking
Location: On platform
Purpose: Identify designated wheelchair + cycle waiting zone - aligns with light rail doors
Materials: Paint
Illuminated: No
Scale: 1:25

SCALE @ A1

DRAWING COLOUR CODED - PRINT ALL COPIES IN COLOUR

IC CERTIFICATE NUMBER:					NOT FOR CONSTRUCTION			
					Canberra Light Rail Stage 2A			
					DESIGN PACKAGE 80 - SIGNAGE AND WAYFINDING			
					SIGN TYPE INDEX			
					DESIGN LOT No:		SHEET: 2 OF 2	A1
					STATUS: APPROVALS ISSUE			Ⓢ
					DRG No.		EDMS No.	C
					S210-COX-SGN-ARC-WY-0099			

A

B

C

D

E

F

G

H

A

B

C

D

E

F

G

H

1

2

3

4

5

6

7

8

9

10

11

12

Colour Definitions

COLOUR	SWATCH	PANTONE®	CMYK	RGB	RAL	PAINT 2 PAC POLYURETHANE (P)	BUILDING PAINT (BP)	VINYLOPAQUE (VO)	VINYLTRANSLUCENT (VT)	POWDERCOAT (PC)	MATERIAL (M)
Charcoal	<div></div>	PMS 432 C			RAL 7021	P1G - GLOSS P1S - SATIN DULUX® TO MATCH PANTONE® 432 C	BP1 -	VO1 -	VT1 -	PC1 -	M1 -
Red (Light Rail)	<div></div>	PMS 186 C	C:2 M:100 Y:85 K:6	R:218 G:26 B:50	RAL 3028	P2G - GLOSS P2S - SATIN DULUX® TO MATCH PANTONE® 186 C	BP2 -	VO2 AVERY® 900 SUPER Q&ST SPICY RED (987)	VT2 3M™ SCOTCHCAL™ REGAL RED (3630-83)	PC2 -	M2 -
Purple (Active)	<div></div>	PMS 268 C	C:88 M:92 Y:0 K:12	R:79 G:41 B:132	RAL 310 30 40	P3G - GLOSS P3S - SATIN DULUX® TO MATCH PANTONE® 268 C	BP3 -	VO3 AVERY® 900 PREMIUM CAST PURPLE (868)	VT3 3M™ SCOTCHCAL™ PLUM PURPLE (3630-128)	PC3 -	M3 -
Blue (Bus)	<div></div>	PMS 2935 C	C:100 M:52 Y:0 K:0	R:0 G:111 B:186	RAL 280 40 45	P4G - GLOSS P4S - SATIN DULUX® TO MATCH PANTONE® 2935 C	BP4 -	VO4 AVERY® 900 PREMIUM CAST SCUBA BLUE (841)	VT4 3M™ SCOTCHCAL™ BRIGHT BLUE (3630-167)	PC4 -	M4 -
Yellow (Bus)	<div></div>	PMS 116 C	C:0 M:15 Y:100 K:0	R:255 G:212 B:0	RAL 1018	P5G - GLOSS P5S - SATIN DULUX® TO MATCH PANTONE® 116 C	BP5 -	VO5 AVERY® 900 SUPER Q&ST BRIGHT YELLOW (928-01)	VT5 3M™ SCOTCHCAL™ SUNFLOWER (3630-25)	PC5 -	M5 -
Black (Multi Mode)	<div></div>	PMS BLACK 6 C			RAL 9005	P6G - GLOSS P6S - SATIN MATCH TO DULUX® BLACK PN2A9	BP6 -	VO6 AVERY® 900 SUPER Q&ST BLACK (901)	VT6 -	PC6 -	M6 -
White	<div></div>	WHITE			RAL 9003	P7G - GLOSS P7S - SATIN MATCH TO DULUX® LEXCON PW1G9	BP7 -	VO7 AVERY® 900 SUPER Q&ST WHITE MATT (920)	VT7 -	PC7 -	M7 OPAL ACRYLIC THICKNESSDEPENDENT ON APPLICATION
Access Blue (AS2700)	<div></div>	STATUTORY BLUE			RAL 280 30 40	P8G - GLOSS P8S - SATIN DULUX® TO MATCH PANTONE® 7684C	BP8 -	VO8 AVERY® 900 SUPER Q&ST SWIMMING BLUE (979)	VT8 AVERYTRANSLUCENT NEW BLUE (5539QM)	PC8 -	M8 -
Eternity Bronze	<div></div>	BRONZE			RAL 7013	P9G - GLOSS P9S - SATIN DULUX® TO MATCH PANTONE® 448 C	BP9 -	VO9 -	VT9 -	PC9 DULUX DURATEC® ETERNITY® BRONZE PEARL SATIN 90088393 *	M9 -
Cool Grey	<div></div>	PMS Cool Grey 9 c									
Pink	<div></div>	PMS 806	C:85 M:0 Y:0 K:0	R:238 G:79 B:156							
Dark Pink (Place of Interest)	<div></div>	PMS 233C	C:24 M:100 Y:10 K:0	R:192 G:28 B:130							

All colour finishes to visually match the Pantone Matching System (PMS) for accuracy and consistency.

Iconography



Light Rail Stop



Bus Stop



Taxi Stop



Pedestrian



Bike Path



Information Point



Place of Interest



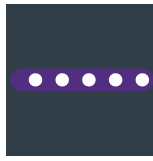
Toilets



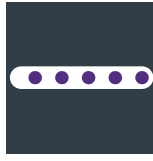
Police Station



Fire Station



Bike Path



Share Path
Bike/Pedestrian

Typography

Akkurat Light

Aa123

ABCDEFGHIJKLMNOPQRSTUVWXYZ
abcdefghijklmnopqrstuvwxyz
1234567890!@#\$\$%^&*()

Akkurat Regular

Aa123

ABCDEFGHIJKLMNOPQRSTUVWXYZ
abcdefghijklmnopqrstuvwxyz
1234567890!@#\$\$%^&*()

Akkurat Bold

Aa123

ABCDEFGHIJKLMNOPQRSTUVWXYZ
abcdefghijklmnopqrstuvwxyz
1234567890!@#\$\$%^&*()

SCALE @ A1

DRAWING COLOUR CODED - PRINT ALL COPIES IN COLOUR

IC CERTIFICATE NUMBER:



This drawing is confidential and shall only be used for the purpose of this project. The signing of this title block confirms the design and drafting of this project have been prepared and checked in accordance with the Canberra Light Rail quality assurance system to ISO 9001-2000.

C O X

DRAWN NIC BAILEY

DESIGNED NIC BAILEY

DRG CHECK ANDY MEDHURST

DESIGN CHECK IAN CONNOLLY

APPROVED IAN CONNOLLY

NOT FOR CONSTRUCTION

Canberra Light Rail Stage 2A

DESIGN PACKAGE 80 - SIGNAGE AND WAYFINDING

COLOURS, TYPOGRAPHY & ICONOGRAPHY

DESIGN LOT No: SHEET: OF A1

STATUS: APPROVALS ISSUE ©

DRG No. S210-COX-SGN-ARC-WY-0100 EDMS No. C

Plot Date & Time 30/01/2023 12:47:24 PM

DF 801*554

