

Kings Park

Preliminary Sketch Plan

AUGUST 2023

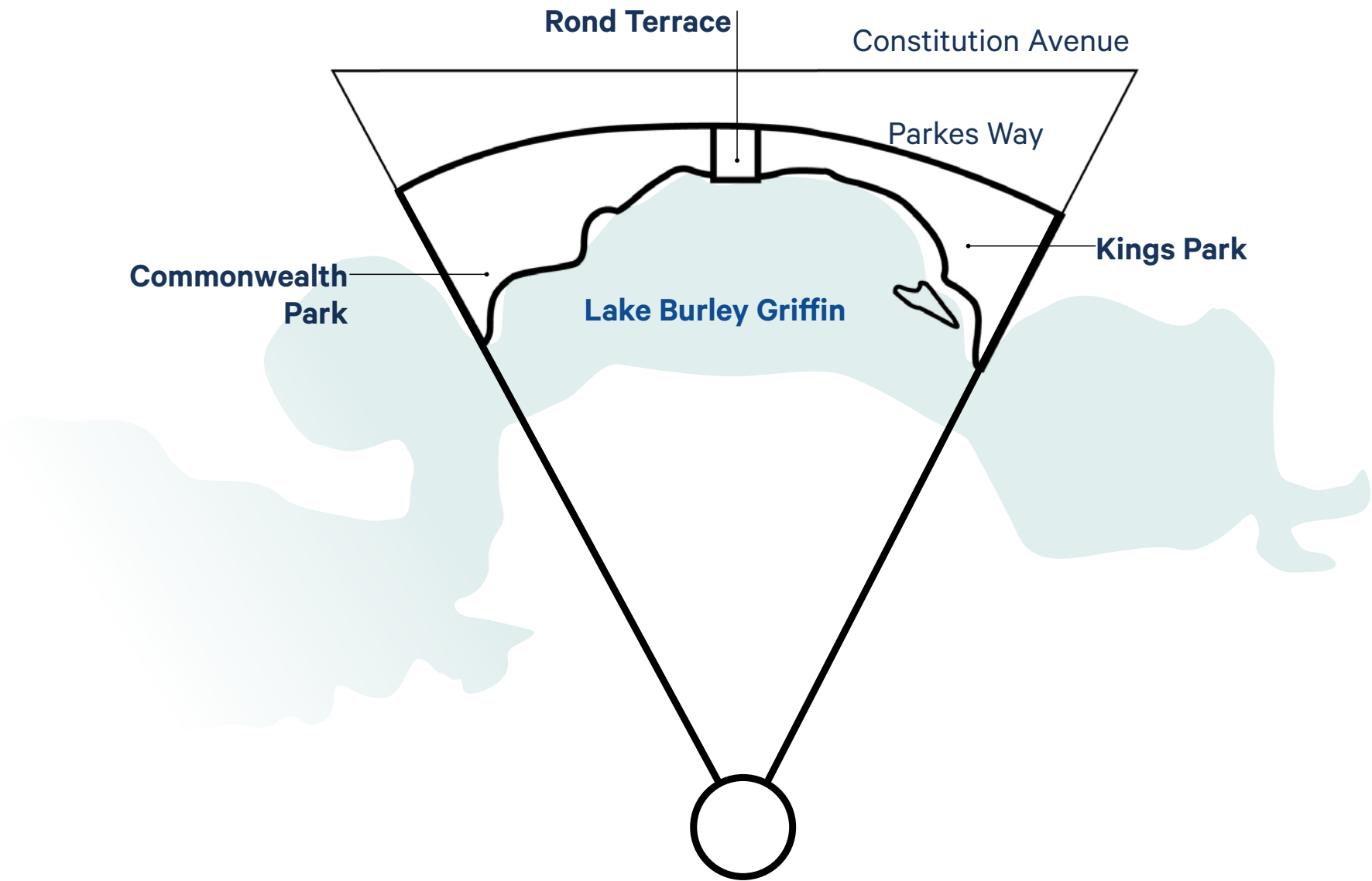
oxygen

Oxygen Pty Ltd
98-100 Halifax Street
Adelaide SA 5000

T +61 (08) 7324 9600
design@oxygen.net.au
oxygen.net.au

PREPARED FOR NATIONAL CAPITAL AUTHORITY
OXIGEN IN COLLABORATION: TTW | DCM

NATIONAL TRIANGLE



Kings Park | Improvement Plan

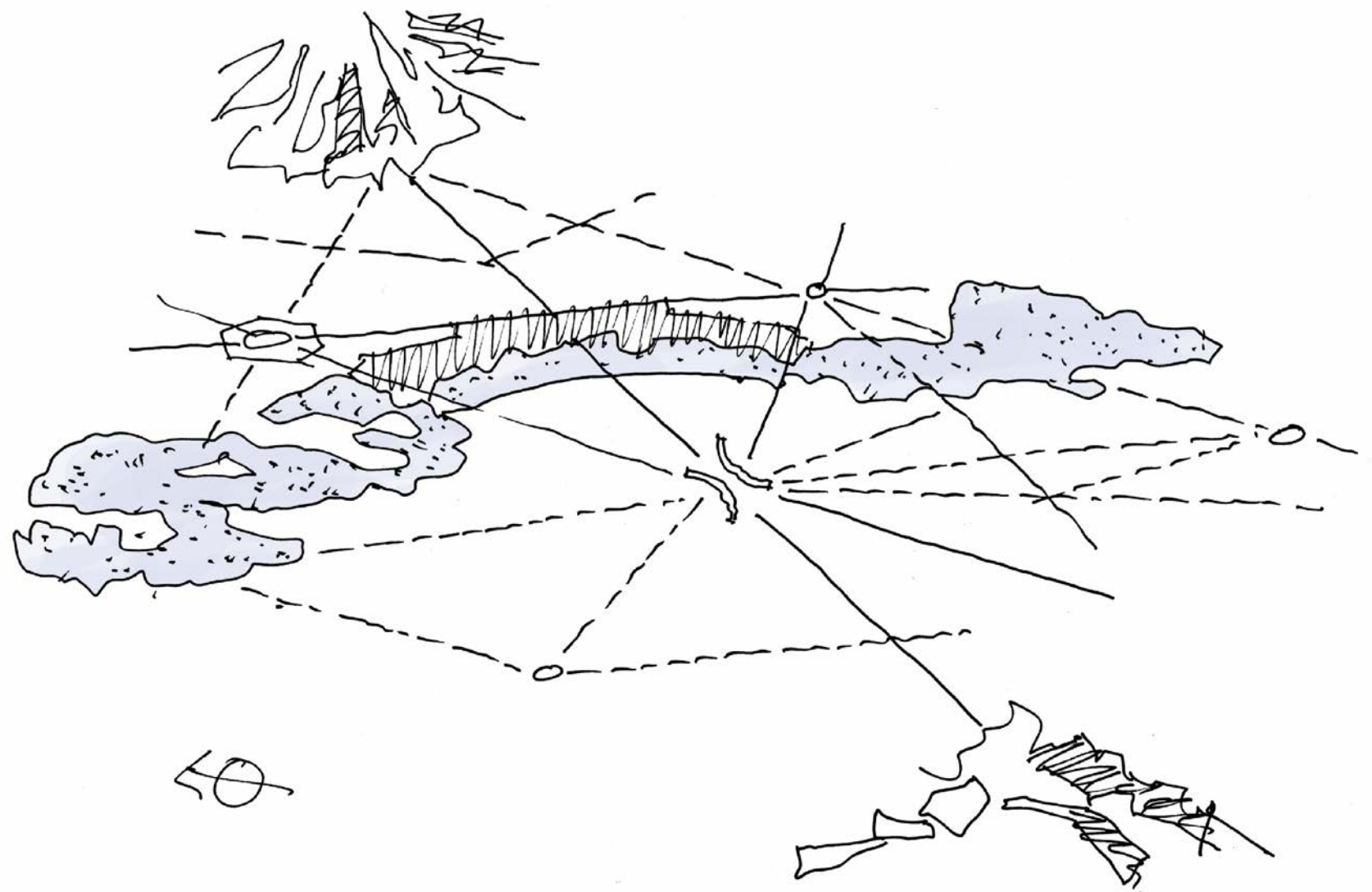
BRIEF + SCOPE



LANDSCAPE EXPRESSION

The 2007 Central Parklands Master Plan identified actions within Kings Park that enmeshed urban design, landscape, heritage, architecture and culture. The last major addition to Kings Park was the Boundless Playground in the somewhat isolated north-east corner of the site – a recognition of the diverse nature of users is the park that, nevertheless, shapes contemporary place-making.

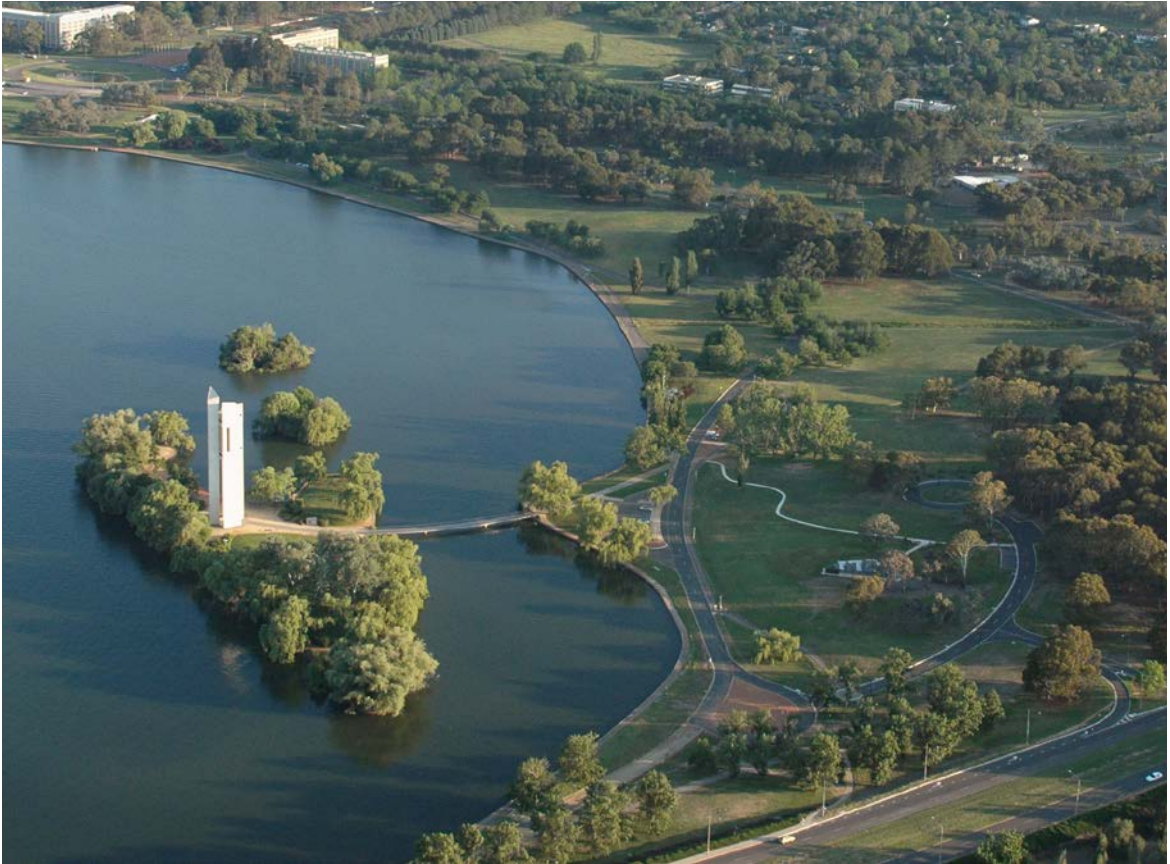
The project describes the proposition for further small interventions within Kings Park that increase its function, attraction and safety by resolving conflicts between pedestrians and cyclists on the increasingly popular RG Menzies Walk, removes vehicles along Wendouree Drive, thereby opening up more recreational spaces within the park to the lake edge, provides an increase in carparking at the park's edge, and improves cycle and pedestrian access to Kings Avenue Bridge. The proposal realises two open lawn events' spaces near the lake edge and opens up the possibility for a permanent café to service the Carillon, RG Menzies Walk and park in general.



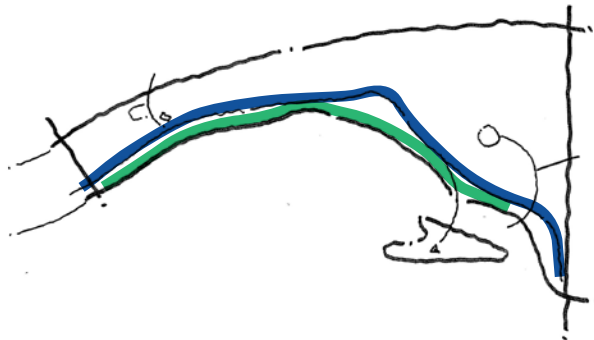
EXISTING



EXISTING

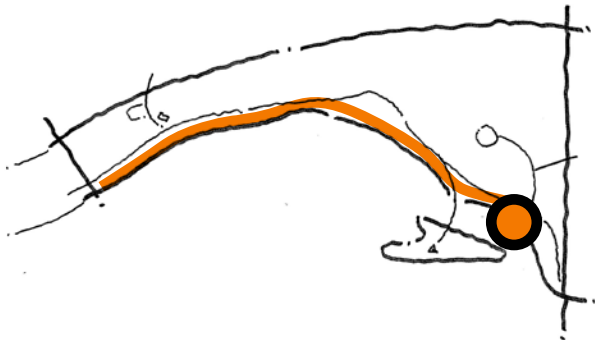


PRINCIPLES



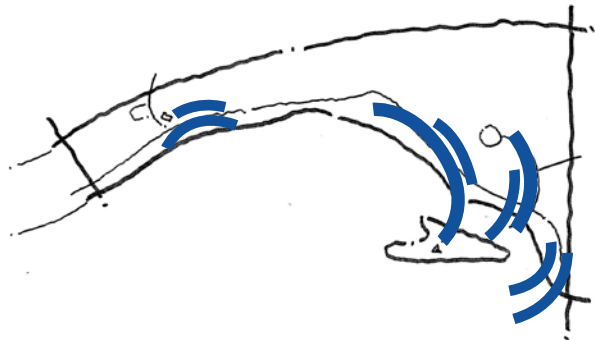
01. Separate pedestrians & cyclists

A new cycleway is defined by closing Wendouree Drive to vehicles and re-purposing as a designated cycleway. This move enable RG Menzies walk to be a separated pedestrian only pathway.



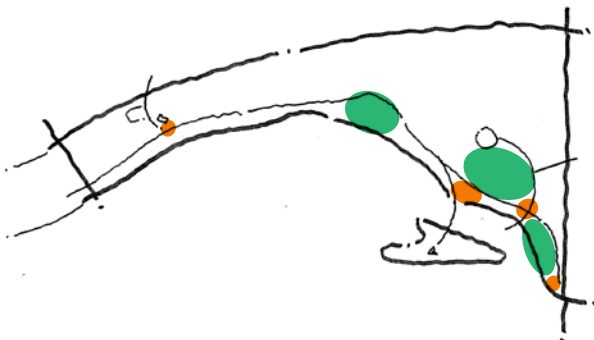
02. Provide a conclusion to RG Menzies Walk

An end point to RG Menzies Walk is defined through a lookout platform capturing views of the National Carillon. The platform provides a clear separation between pedestrian and cycle pathways and also provides a main entry to the park.



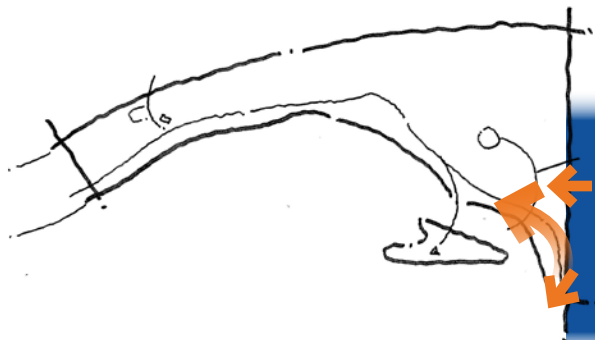
03. Restore geometry

Geomety of Kings Park is restored to offer a consistent character and identity across the Park. This reconfiguration offers a series of new spaces and connections.



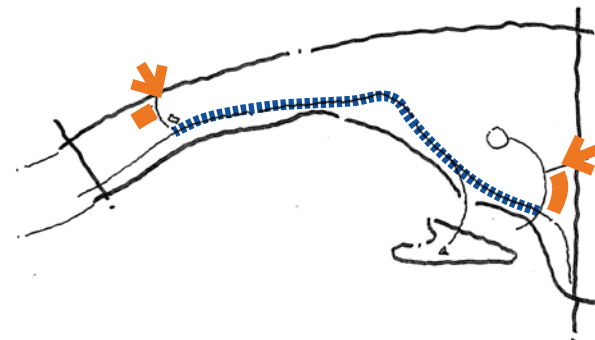
04. Form new event spaces

Reconfiguration of Kings Park provides a series of new events spaces. These spaces vary in use and scale from new lakeside lawns to small park plazas.



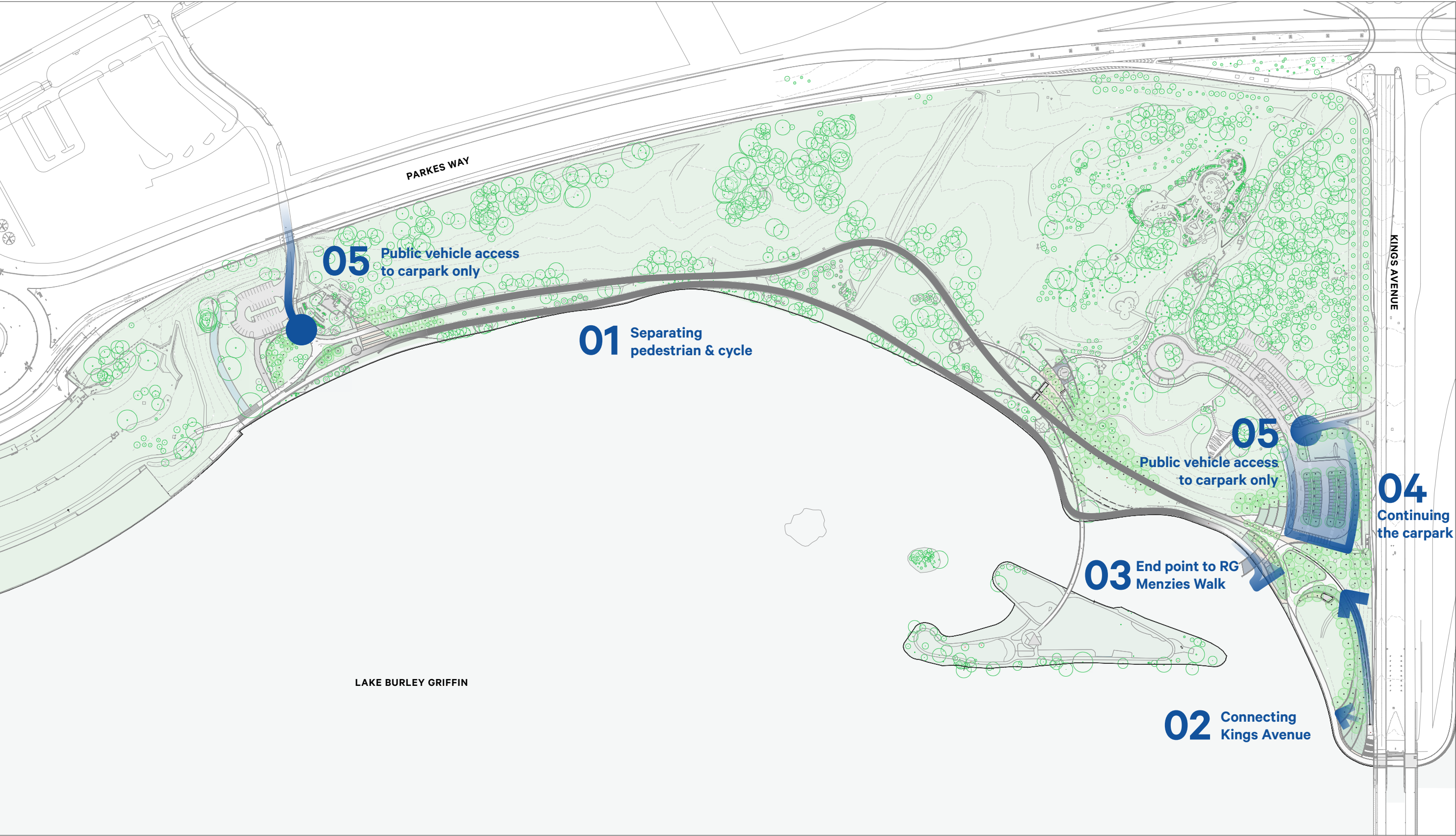
05. Provide direct access from Kings Avenue Bridge to Kings Park

A designated cycleway (+ accessibility) ramp provides a direct connection between Kings Park and Kings Avenue. This is also supported by two pedestrian stairway access points.



06. Expand carpark & exclude vehicles

Wendouree Drive is closed to the public and only accessed by maintenance and event vehicles. A new carpark is provided from Kings Avenue to offer a collection and entry point to Kings Park.



Kings Park | Improvement Plan

DEMOLITION

Existing roadway & carparks removed. New cycleway path to follow existing alignment & re-use existing sub-base.

Existing RG Menzies Walk adjacent carpark relocated to lake edge.

Carpark removed for new event lawn.

Existing trees and pathways and carpark removed for new carpark footprint.

LAKE BURLEY GRIFFIN

KINGS AVENUE

- Demolition
- Tree removal

01. SITEWORKS



KEY MOVES

- 1 CYCLEWAY RAMP (1:33) FROM KINGS AVENUE
- 2 CAR PARK WITH BUS DROP-OFF.
- 3 KINGS POINT TERRACES & STAIRWAY.
- 4 RG MENZIES WALK LOOKOUT PLATFORM.
- 5 PARK PAVILION / KIOSK.
- 6 RG MENZIES WALK REALIGNMENT.
- 7 PLAZA WITH AMENITIES.
- 8 ACCESSIBLE LINK TO MEMORIAL.



Kings Park | Improvement Plan

CYCLE

Separtated ycleway
continues through to
Blundells Cottage

New designated 3.5m
wide cycleway aligning
with existing roadway.

LAKE BURLEY GRIFFIN

Cyclists turn off RG
Menzies Walk and
onto new separated
cycleway

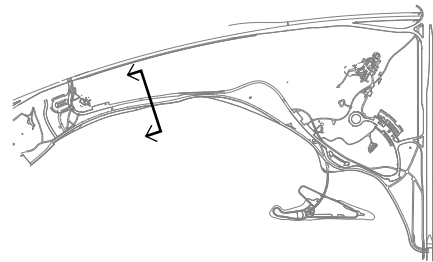
Cycleway ramp from
Kings Avenue

Mixed-use path

- Separated Cycleway
- Mixed-use Path

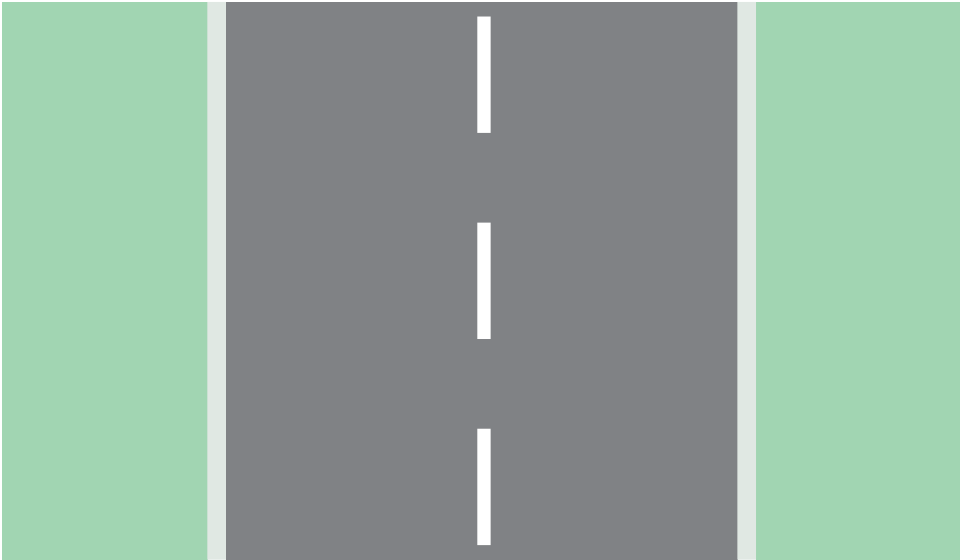


CYCLE



Existing Wendouree Drive

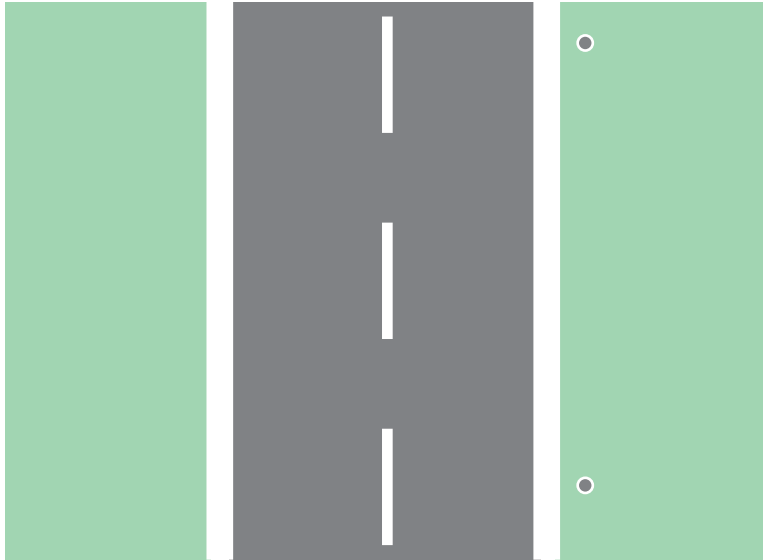
Typical Plan



- Existing hotmix and upstand kerb are removed from Wendouree Drive.
- Existing sub-base is retained to the required cycleway width.

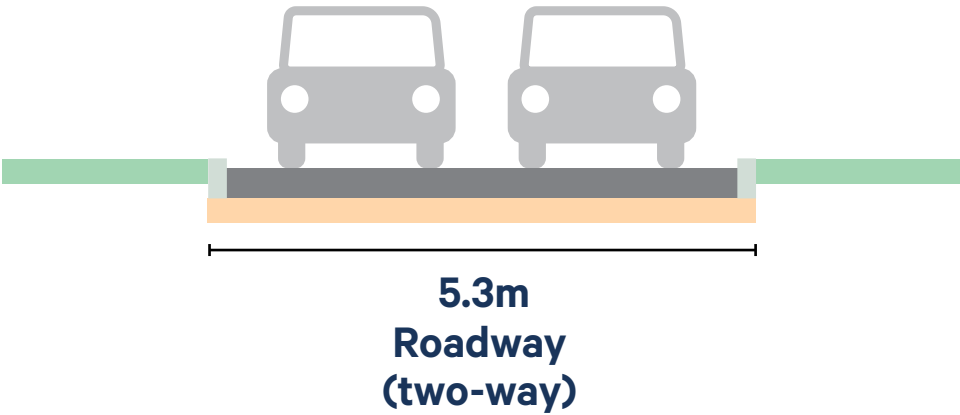
Proposed Cycleway

Typical Plan

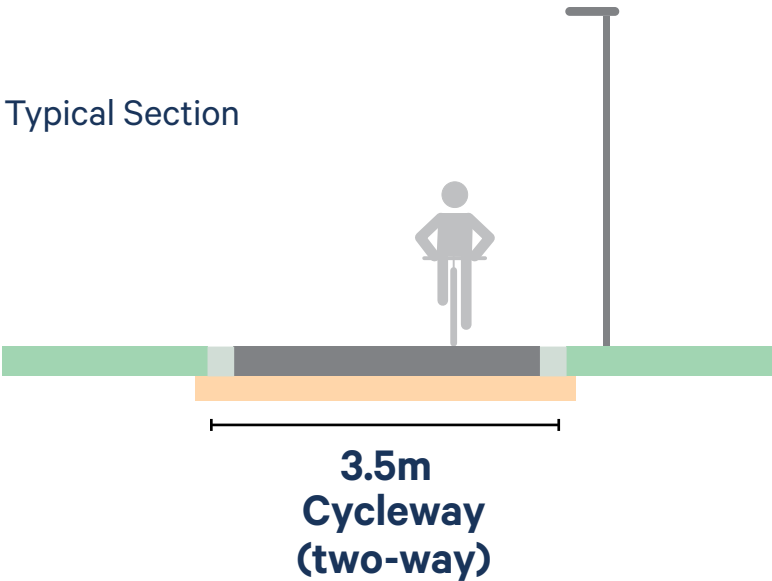


- Utilise the existing Wendouree Drive roadway alignment.
- Existing sub-base re-used, minimising further civil works.
- Cycleway resealed.
- 300mm wide insitu concrete edging.
- Sufficient lighting for safe use at all hours.

Typical Section



Typical Section



Kings Park | Improvement Plan

PEDESTRIAN

RG Menzies Walk
realigned to follow
lake edge.

RG Menzies Walk ends at
the new lookout platform. A
minor connection path allows
pedestrians to connect to the
mixed use path.

Stairway provides
pedestrian access
from Kings Avenue.

-  Pedestrian pathway
-  Mixed-use Path
-  Public toilet
-  Accessibility parking

LAKE BURLEY GRIFFIN

KINGS AVENUE



Kings Park | Improvement Plan

VEHICLE

New cycleway is suitable for large vehicle access.

New carpark caters for large rigid buses to circulate with a drop-off / pick up location.

Maintenance vehicle access point. Access controlled by push-down bollards.

New off-peak bus stop on Kings Avenue with a connecting stairway to Kings Park.

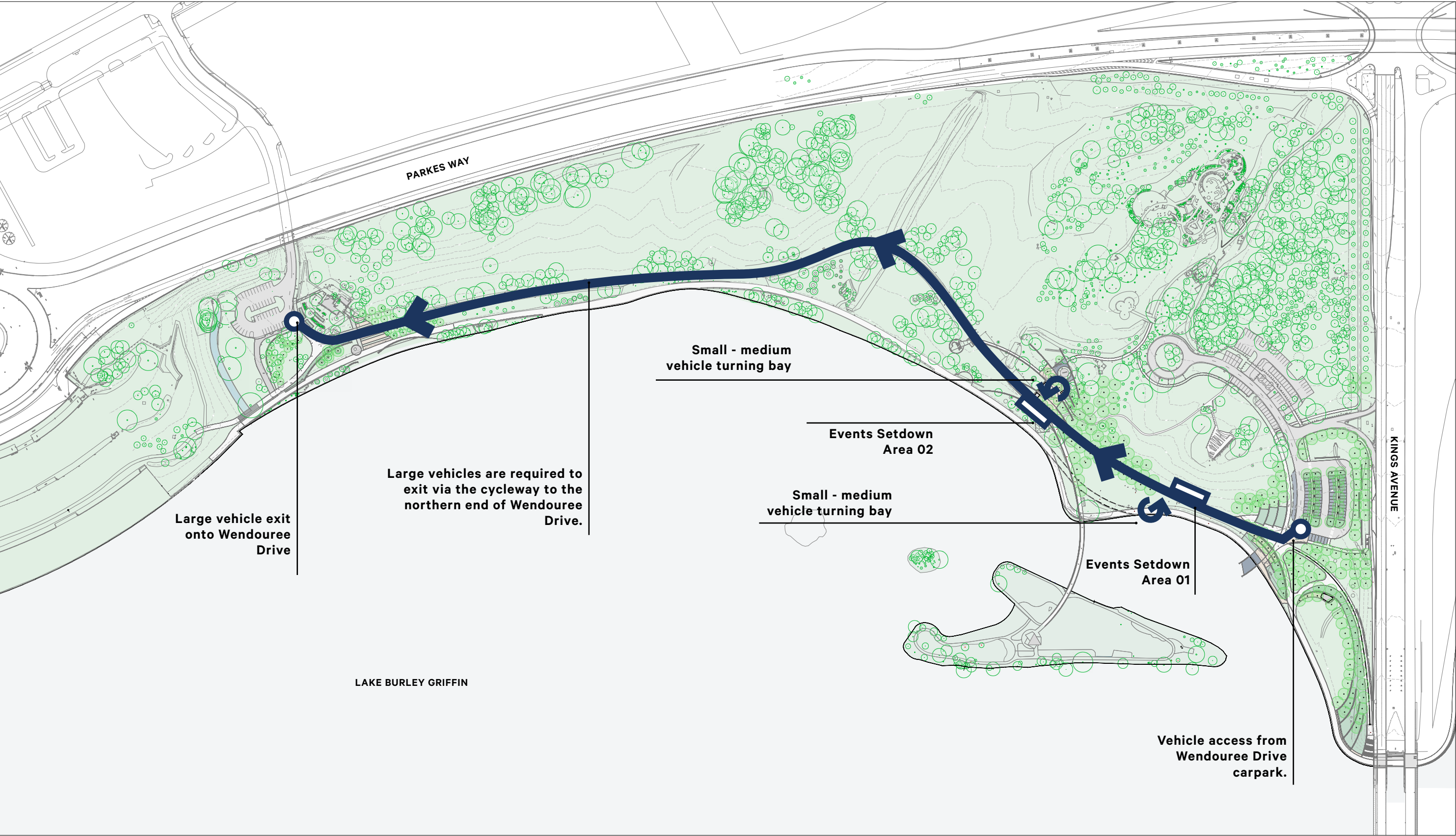
Maintenance vehicle access continues under Kings Avenue bridge.

- Public vehicle access
- Restricted access
- Bus Stop
- Public parking
- Accessibility parking

LAKE BURLEY GRIFFIN

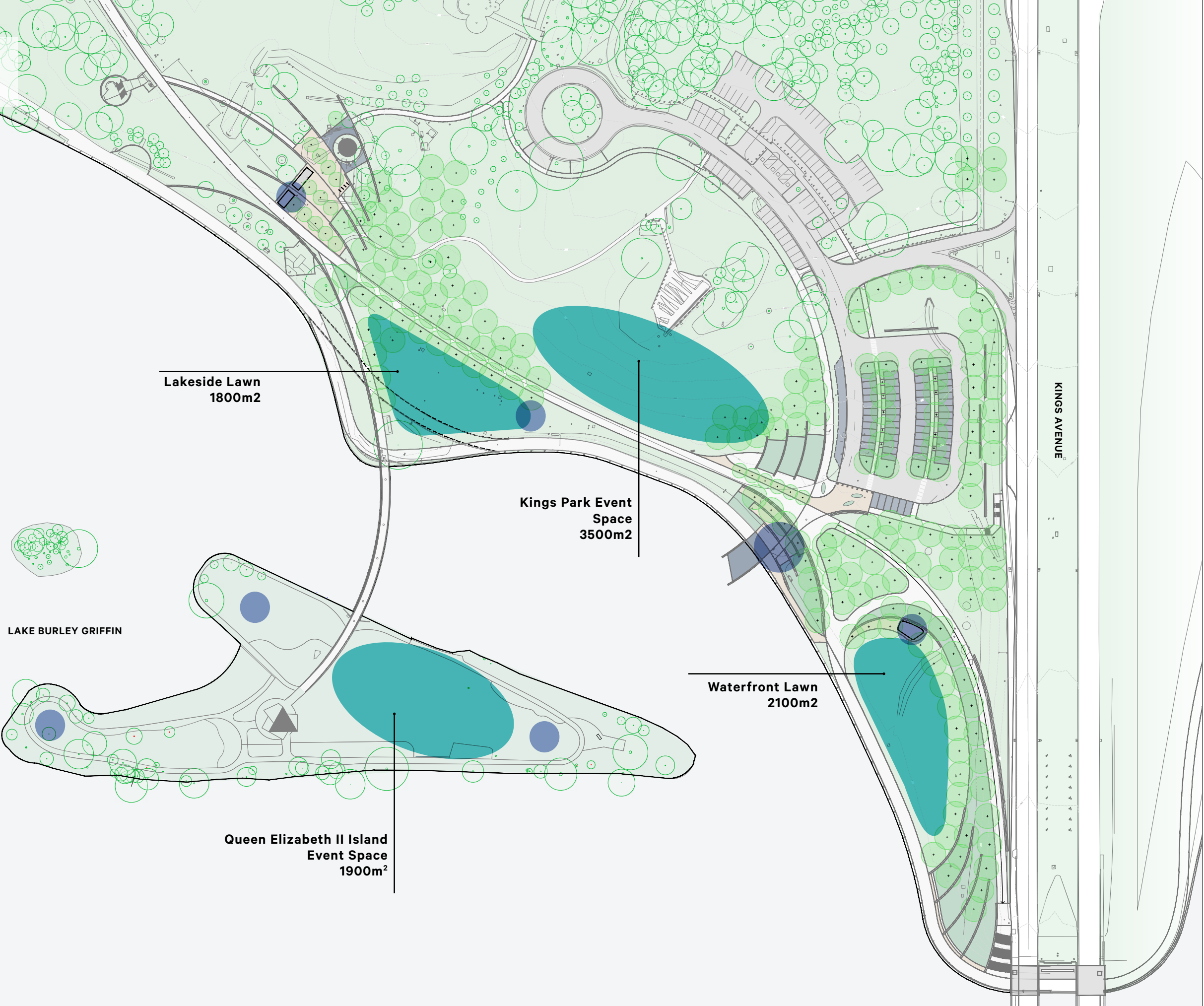
KINGS AVENUE

OPERATIONS + VEHICLE ACCESS



Kings Park | Improvement Plan

EVENTS



- Smaller Events
- Larger Events



Kings Park | Improvement Plan

INFRASTRUCTURE

Facilities

Kings Park Entry
Plaza + Kiosk

Menzies lookout

Kings Point

LAKE BURLEY GRIFFIN

KINGS AVENUE

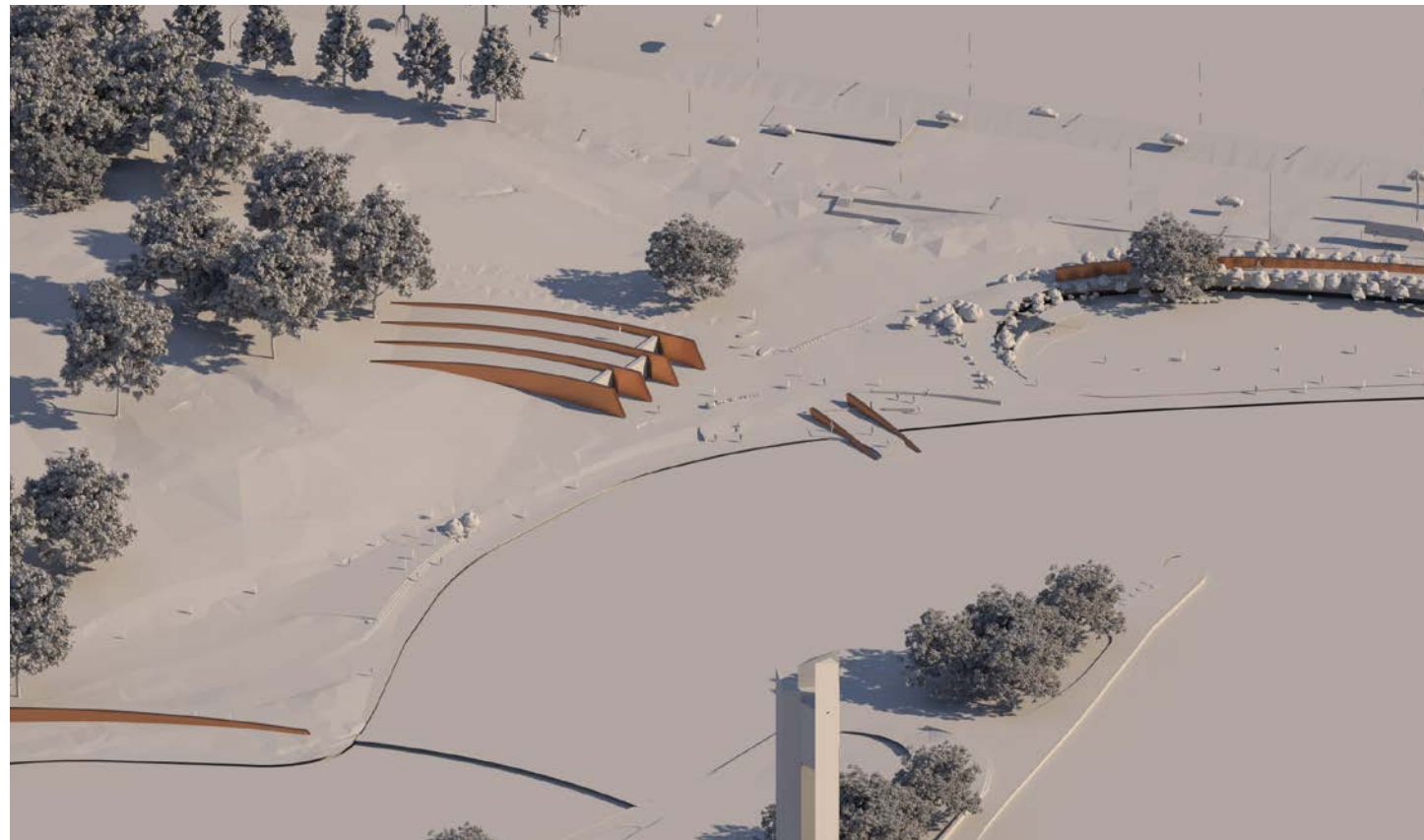
KIOSK

Key Elements

- Positioned adjacent the expanded carpark for ease of access and servicing.
- North west aspect capturing lakeside views and the Carillon.
- 200m² footprint comprised of a small kiosk (with outdoor seating only) and public toilets.

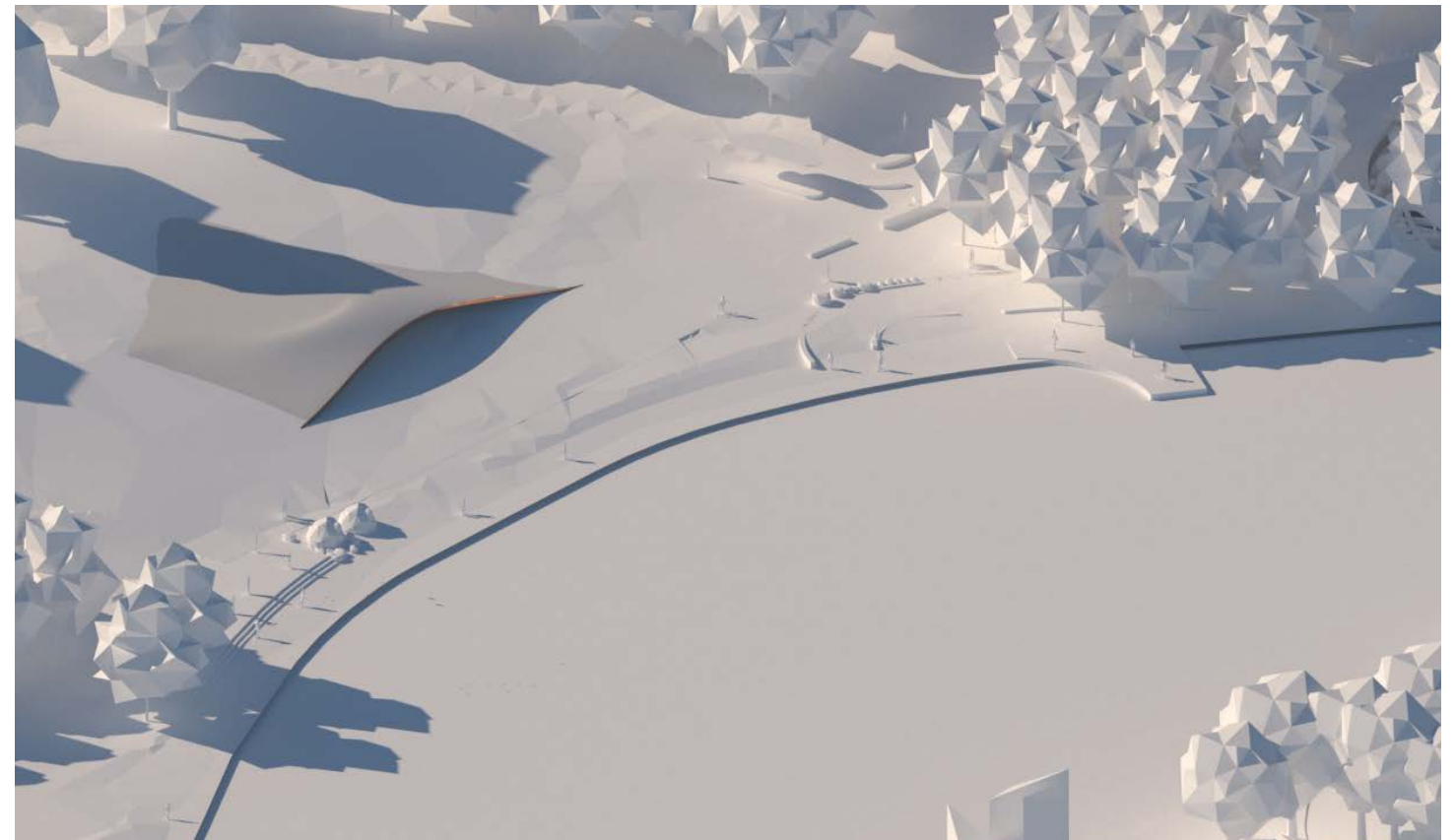
Option A

- Architectural style consistent with the new geometry and layout of Kings Park.
- Integrated into the hillside with an accessible greenroof that provides a lookout point to the lake.



Option B

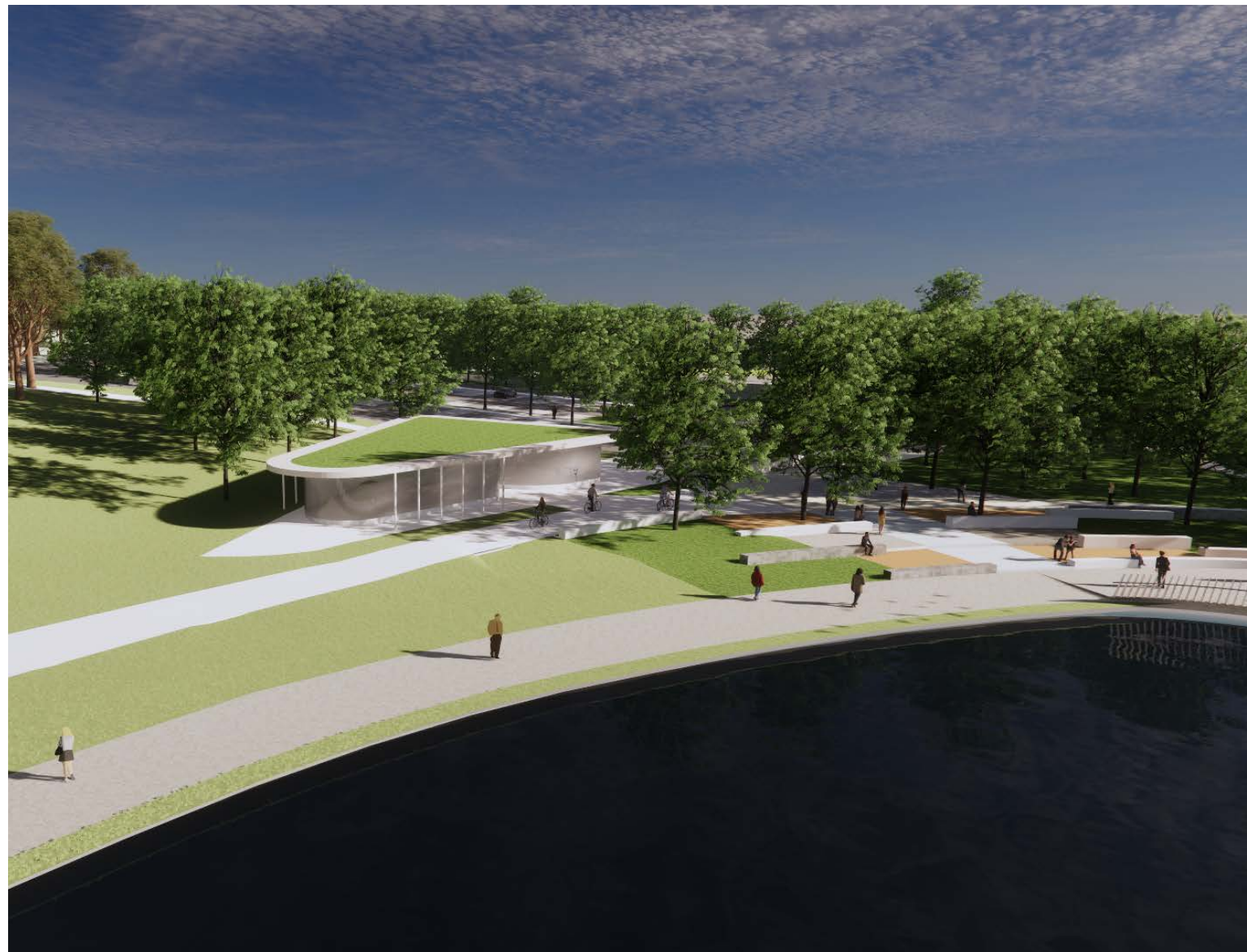
- Recessed into the hillside having minimal visual impact.
- Similar to Option A, the rooftop is accessible providing a vantage point for views over the lake.



Kiosk + Amenities

Option C

- A lightweight glass structure with a supporting pods for public toilets.
- The two structures are adjoined by a green roof structure (not accessible).



Kings Park | Improvement Plan

VIEWS



VIEW 01 - View looking east from lakeside to Kings Point



VIEW 02 - View looking North from Kings Point along RG Menzies Walk



OPEN LAKESIDE LAWN

TREE LINED
EMBANKMENT

LOUNGE SEATING

VIEW 03 - View looking North from Kings Avenue along cycleway ramp



VIEW 04 - View looking East from lakeside to Kings Park Entry Plaza



VIEW 05 - View looking North from carpark to Kings Park Entry Plaza



VIEW 06 - View looking North along cycleway (existing Wendouree Drive)



Kings Park | Improvement Plan

Preliminary Paving Materials



HOTMIX WITH CONCRETE EDGING

Use: Cycleway

- Trafficable hotmix (rated for heavy vehicle use).
- 300mm wide concrete edging (shotblast finish).



AUSTRALIAN NATURAL STONE
JUPERANA, COFFEE

Use: High-use and concentrated pedestrian areas

- Any size options available and various finishes
- Highly trafficable on concrete slab
- Ultimate flexibility with size, form and shape to incorporate inlay, text



COMPACTED DECOMPOSED GRANITE

Use: Rest areas and secondary high-use areas.

- Trafficable (light vehicle use only)
- Sourced locally
- Soil bond additive



EXPOSED AGGREGATE CONCRETE
PAVING WITH LOCAL EXPOSED
AGGREGATE

Use: Connections with RG Menzies Walk

- Highly trafficable - any depth to suit trafficable load ratings.
- Can be sealed.
- Various colours available through selection of aggregates and oxides.
- Various finishes available - 1mm reveal, shotblast, milled
- High quality finish required to be undertaken by specialist concreters.

Kings Park | Improvement Plan

Preliminary Tree Selection



Quercus rubra
Red Oak

- Deciduous
- Height: up to 20m
- Span: up to 6m



Quercus cerris
Turkey Oak

- Deciduous
- Height: up to 30m
- Span: up to 10m



Angophora costata
Sydney Red Gum

- Evergreen
- Height: up to 20m
- Span: 10 - 15m



Zelkova serrata
Green Vase

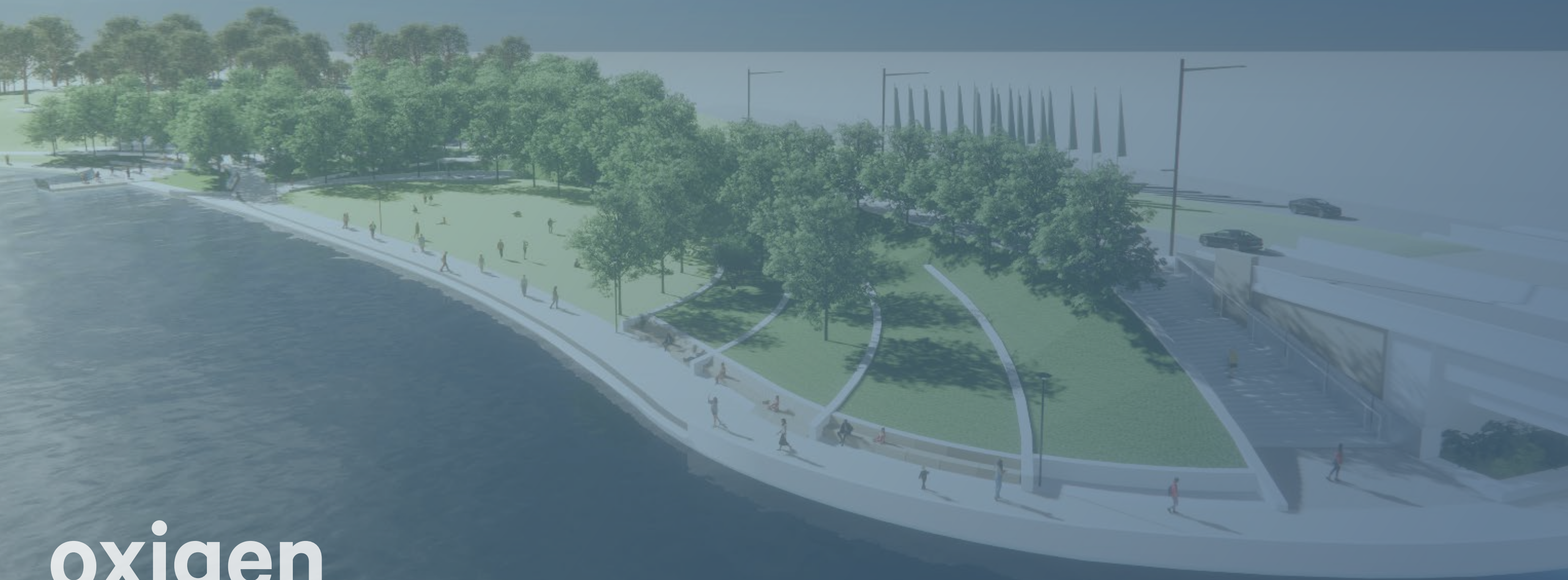
- Deciduous
- Height: up to 14m
- Span: 6m



Lagerstroemia indica x L.fauriei 'Natchez'
Crepe Myrtle

- Deciduous
- Height: up to 6m
- Span: 4m

PREPARED FOR NATIONAL CAPITAL AUTHORITY
OXIGEN IN COLLABORATION: TTW | DCM



oxygen

Oxygen Pty Ltd
98-100 Halifax Street
Adelaide SA 5000

T +61 (08) 7324 9600
design@oxygen.net.au
oxygen.net.au