

TREES



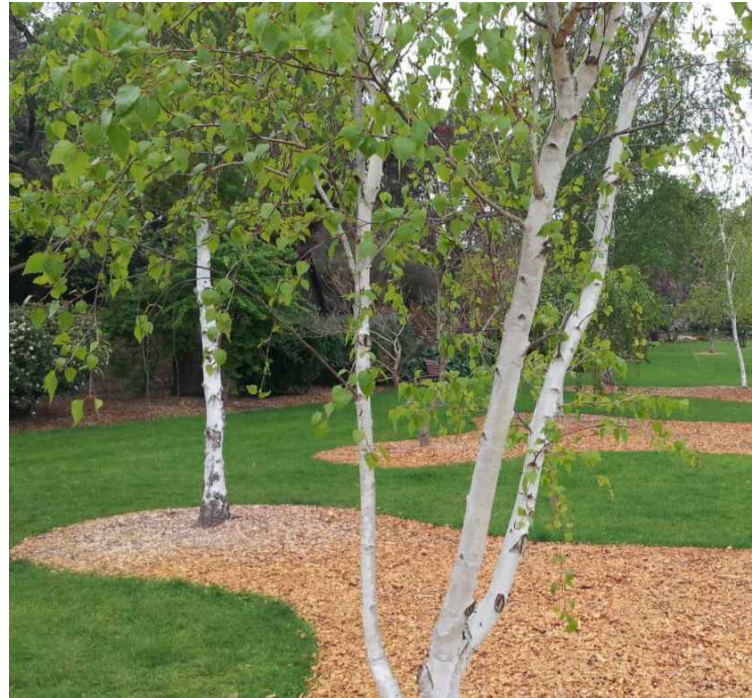
Acer rubrum 'October Glory'



Acer palmatum 'Dissectum Inaba Shidare'



Magnolia soulangeana 'Royal Crown'



Betula pendula



Magnolia teddy bear

HEDGES



Buxus microphylla japonica



Buxus sempervirens



Viburnum tinus - form



Viburnum tinus - detail



Phyllostachys nigra

SHRUBS



Raphiolepis indica 'Snow Maiden'



Gardenia augusta 'Florida'



Raphiolepis indica 'Oriental Pearl'

ACCENT



Liriope giganteum 'Evergreen Giant'



Ophiopogon japonicus

GROUND COVERS



Dichondra silver falls



Cerastium tomentosum



Gardenia radicans



Juniperus procumbens 'Nana'



Trachelospermum asiaticum

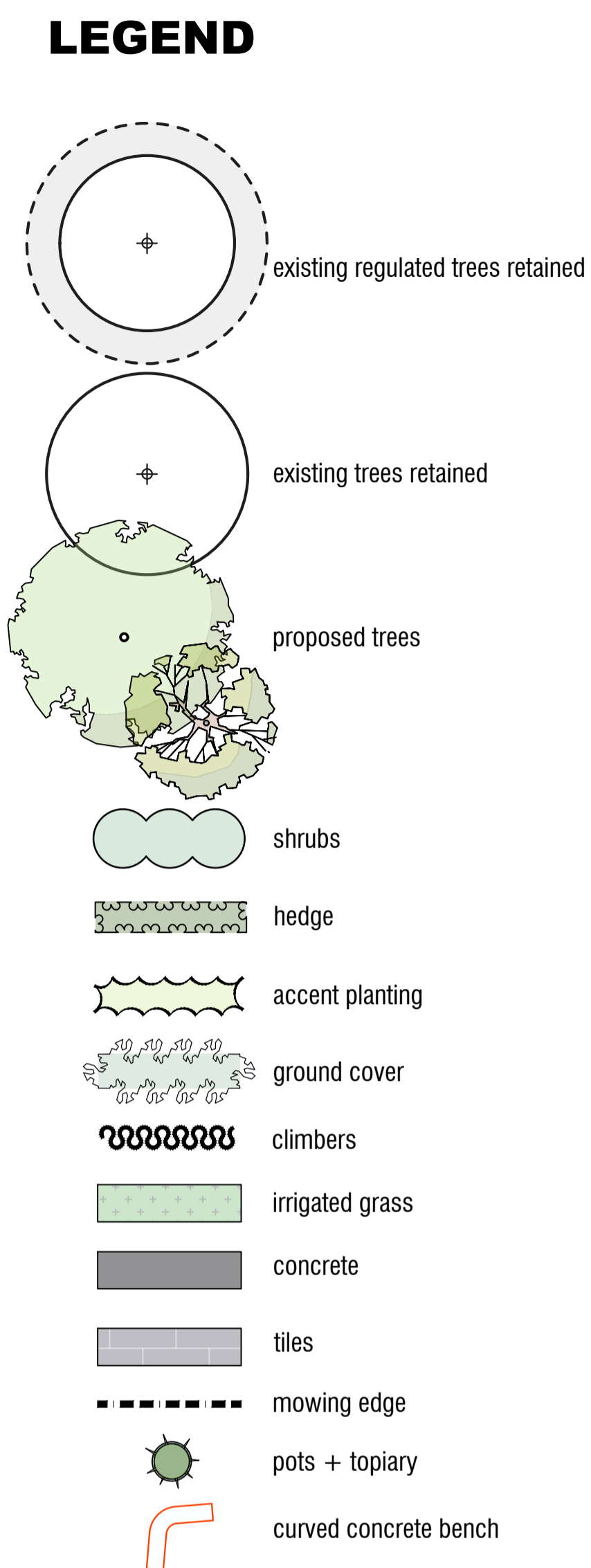


Viola hederacea



Trachelospermum jasminoides

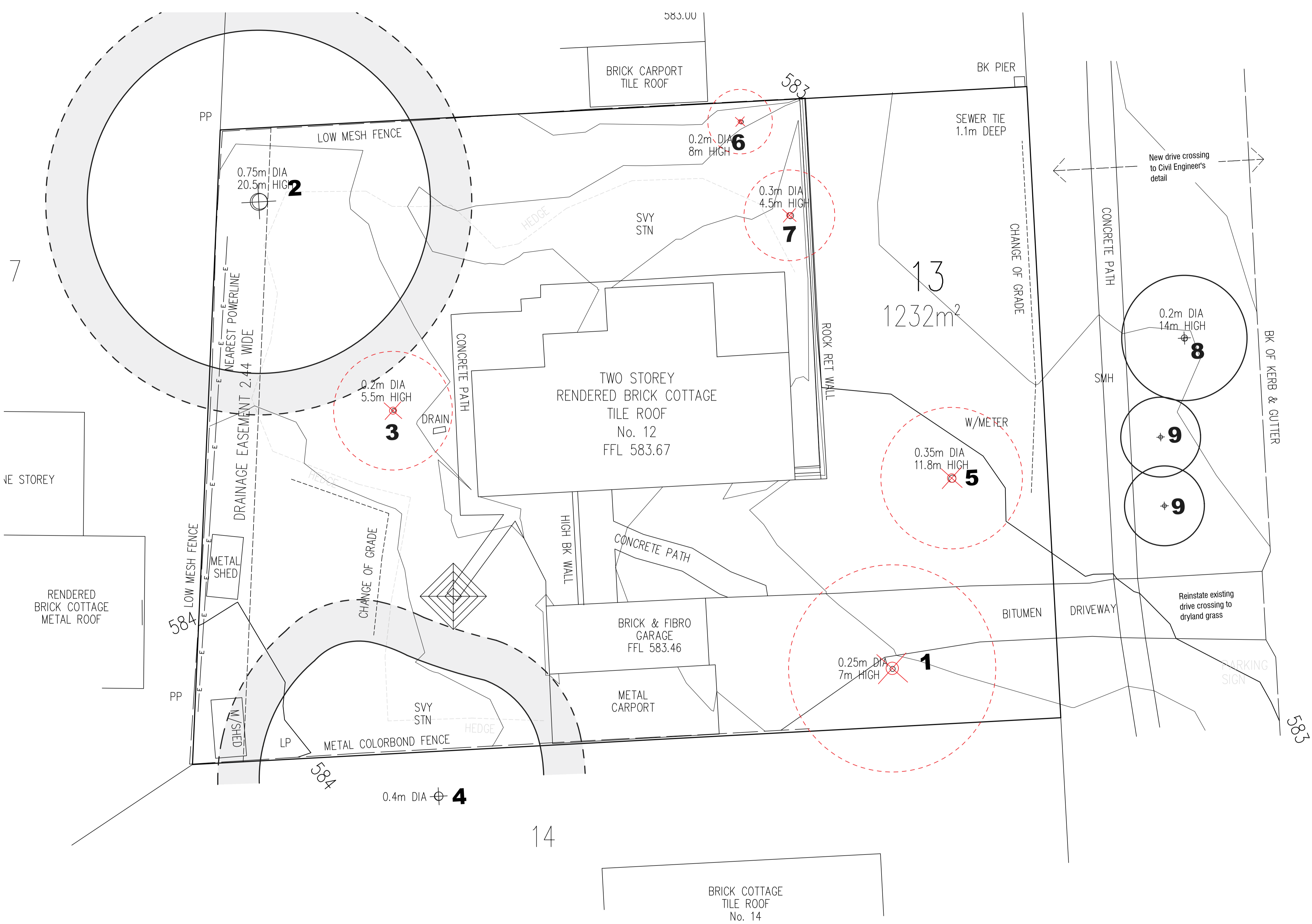
CLIMBERS



TREES			
SYM	NAME	SIZE	QTY
AIS	Acer palmatum 'Dissectum Inaba Shidare'	75L	1
AROG	Acer rubrum 'October Glory'	75L	2
MRC	Magnolia soulangeana 'Royal Crown'	75L	1
BPE	Betula pendula	75L	6
MRC	Magnolia teddy bear	75L	8
SHRUBS			
SYM	NAME	SIZE	QTY
Bmj	Buxus microphylla japonica	200mm	69
Bse	Buxus sempervirens	200mm	38
Ohs	Osmanthus delavayi 'Heaven Scent'	200mm	22
Vt	Viburnum tinus	200mm	44
Rsm	Rhaphiolepis indica 'Snow Maiden'	200mm	25
Gaf	Gardenia augusta 'Florida'	200mm	10
Rop	Rhaphiolepis indica 'Oriental Pearl'	200mm	33
ACCENT PLANTING			
SYM	NAME	SIZE	QTY
Leg	Liriope giganteum 'Evergreen Giant'	140mm	130
Opj	Ophiopogon japonicus	140mm	12
Pni	Phyllostachys nigra	140mm	20
GROUND COVERS			
SYM	NAME	SIZE	QTY
Gra	Gardenia radicans	140mm	108
Jpn	Juniperus procumbens 'Nana'	140mm	96
Ta	Trachelospermum asiaticum	140mm	104
Vh	Viola hederacea	140mm	24
Dsf	Dichondra silver falls	140mm	42
Cto	Cerastium tomentosum	140mm	30
CLIMBERS			
SYM	NAME	SIZE	QTY
Tj	Trachelospermum jasminoides	140mm	39

TREE CANOPY: 45.7%
SOFT LANDSCAPE: 44.8%

REV.	DESCRIPTION	DRAWN	APPROVED	DATE
A	FOR REVIEW	HJ	NH	04OCT22
B	FOR WORKS APPROVAL	JS	NH	06JUN23
C	FOR WORKS APPROVAL	JS	NH	13JUN23
D	FOR WORKS APPROVAL	JS	NH	13JUN23
E	FOR WORKS APPROVAL	JS	NH	14JUN23
-	-	-	-	-
-	-	-	-	-
-	-	-	-	-



LEGEND

regulated trees
+2m tree protection zone

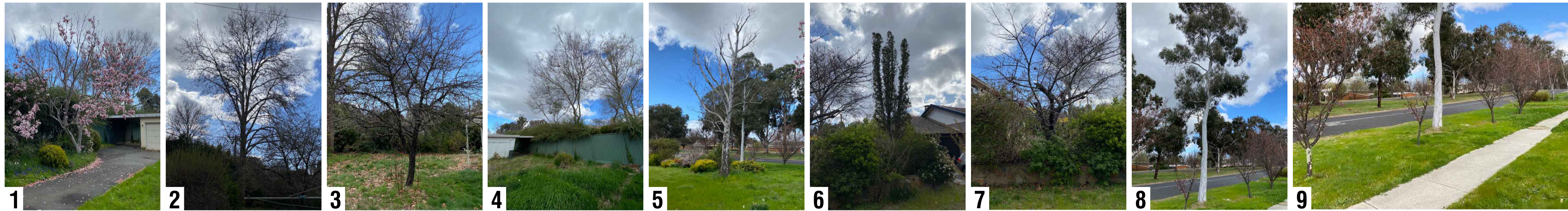
non-regulated trees
proposed to be retained

non-regulated trees
proposed to be removed

1

tree assessment number

TREE ASSESSMENT PHOTOS



TREE ASSESSMENT SCHEDULE

TREE NO.	SPECIES	HEIGHT (m)	WIDTH (m)	TRUNKS (no.)	TRUNK CIRC. (mm)	RATING	REGULATED	RECOMMENDATION	COMMENTS
1	Magnolia soulangeana	7	6	1	1300	GOOD	NO	REMOVE	
2	Platanus orientalis	20	14	1	3000	GOOD	YES	RETAIN	
3	Malus ioensis 'Plena'	5	5	1	500	GOOD	NO	REMOVE	
4	Ulmus parvifolia (neighbour)	16	12	1	1800	GOOD	YES	RETAIN	
5	Betula pendula	dead						REMOVE	
6	Conifer ssp.	7	1	2	1000	POOR	NO	REMOVE	
7	Prunus serrulata	4	3	1	450	POOR	NO	REMOVE	
8	Eucalyptus mannifera	13	4	1	800	GOOD	STREET	RETAIN	
9	Group of Prunus cerasifera	4	3	1	300	FAIR	STREET	RETAIN	

REV.	DESCRIPTION	DRAWN	APPROVED	DATE
A	FOR APPROVAL	HJ	NH	20SEP22
B	FOR WORKS APPROVAL	JS	NH	07JUN23
-	-	-	-	-
-	-	-	-	-
-	-	-	-	-
-	-	-	-	-
-	-	-	-	-
-	-	-	-	-
-	-	-	-	-
-	-	-	-	-

HARRIS HOBBS LANDSCAPES

Landscape Architect

16 ROBE STREET
DEAKIN ACT 2600
p +61 2 6273 4661
e hhl@hhl.com.au
w www.hhl.com.au

Harris Hobbs Landscapes acknowledges the Ngunnawal people, the traditional custodians of the land on which we live, work, rest and play.

SCALE @ A3
1:200

0 1 2 3 4 5 6 7 8 9 10m

DATE
JUNE 2023

CLIENT
NAME

PROJECT
12 HOBART AVENUE FORREST ACT

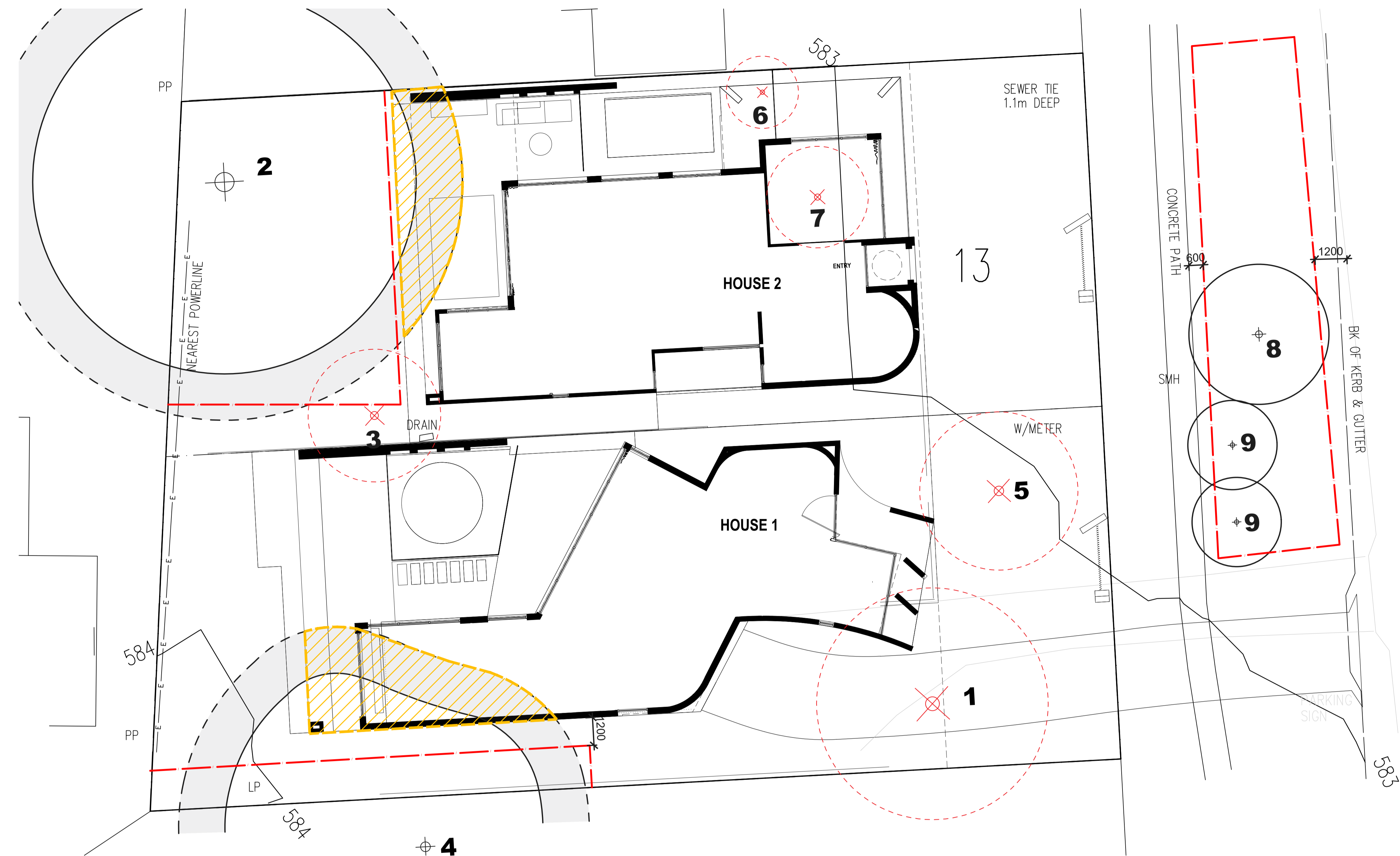
DRAWING TITLE
TREE ASSESSMENT

STATUS
FOR WORKS APPROVAL

JOB
22093

REV
B

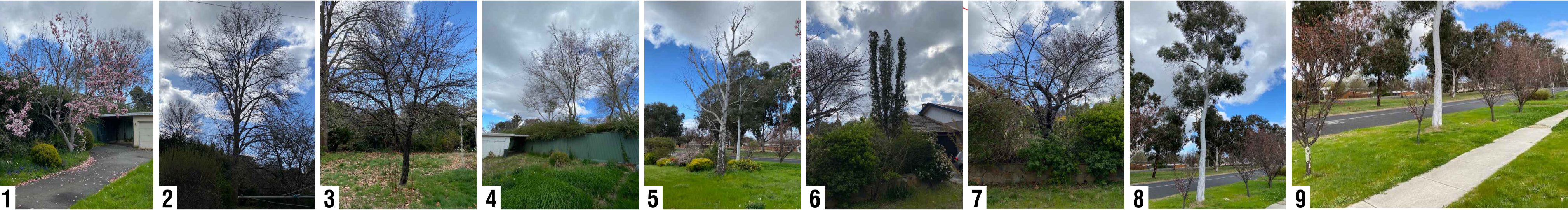
DWG
201



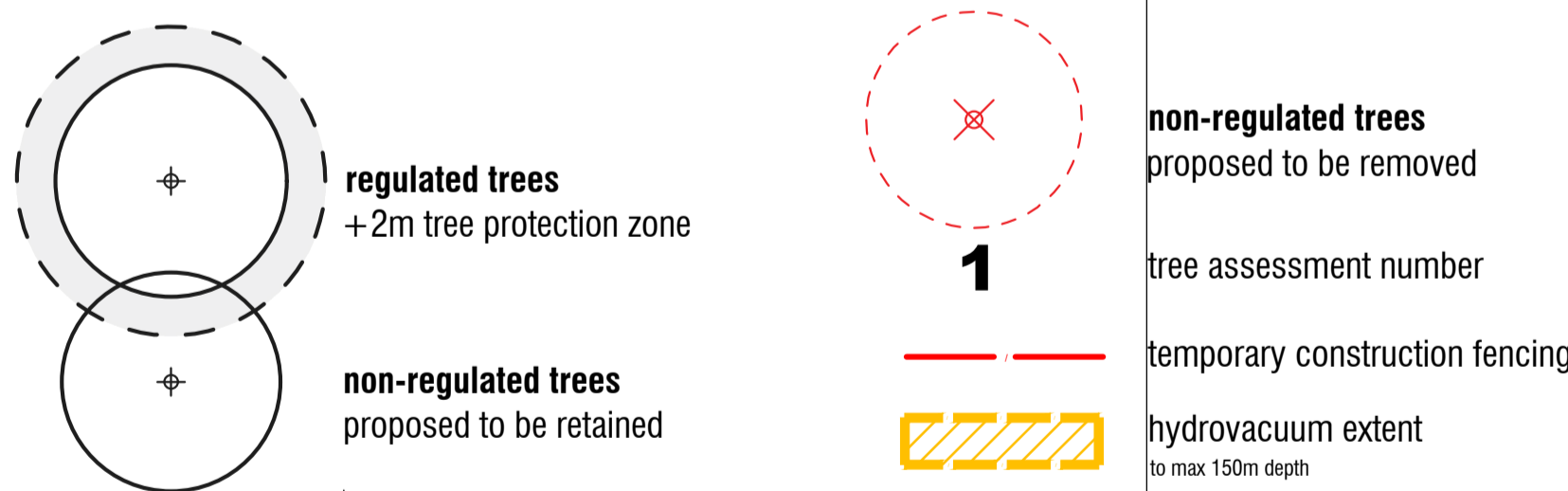
TREE ASSESSMENT SCHEDULE

TREE NO.	SPECIES	HEIGHT (m)	WIDTH (m)	TRUNKS (no.)	TRUNK CIRC. (mm)	RATING	REGULATED	RECOMMENDATION	COMMENTS
1	Magnolia soulangeana	7	6	1	1300	GOOD	NO	REMOVE	
2	Platanus orientalis	20	14	1	3000	GOOD	YES	RETAIN	
3	Malus ioensis 'Plena'	5	5	1	500	GOOD	NO	REMOVE	
4	Ulmus parvifolia (neighbour)	16	12	1	1800	GOOD	YES	RETAIN	
5	Betula pendula	dead						REMOVE	
6	Conifer ssp.	7	1	2	1000	POOR	NO	REMOVE	
7	Prunus serrulata	4	3	1	450	POOR	NO	REMOVE	
8	Eucalyptus mannifera	13	4	1	800	GOOD	STREET	RETAIN	
9	Group of Prunus cerasifera	4	3	1	300	FAIR	STREET	RETAIN	

TREE ASSESSMENT PHOTOS



LEGEND



TREE PROTECTION NOTES

INSTALL 1800mm TALL CONTINUOUS CHAIN MESH PANELS SUPPORTED BY CONCRETE BASES TO ISOLATE CONSTRUCTION SITE WORKS AND VERGES AS SHOWN ON DRAWING.

ALL FENCING TO BE ERECTED ON COMMENCEMENT OF SITE WORK AND REMOVED AT COMPLETION OF CONSTRUCTION. THE FENCE IS TO REMAIN CONTINUOUS THROUGHOUT THE PROJECT, EXCEPT WHERE APPROVED SERVICE INSTALLATION OCCURS.

EXCAVATE WITH EXTREME CARE WITHIN TREE PROTECTION ZONES (CANOPY + 2m) EXPOSE ROOTS AND CUT ALL ROOTS >50mm DIA BY HAND SAW.

ALL EXPOSED ROOTS ARE TO BE KEPT DAMP (THROUGH WRAPPING IN WET HESSIAN OR SIMILAR) AND BACKFILLED AS SOON AS POSSIBLE.
ANY PRUNING TO REMOVE BRANCHES TO BE IN ACCORDANCE WITH AUSTRALIAN STANDARD 4373 'PRUNING OF AMENITY TREES'.

ALL WORK IS TO BE IN ACCORDANCE WITH MITS 09 + TCCS REF 06 DOCUMENTS. ALL AREAS OF THE VERGE THAT ARE AFFECTED BY WORKS ARE TO BE REINSTATED AS PER MITS AND MIS REQUIREMENTS.

IT IS THE RESPONSIBILITY OF THE BUILDER TO ENSURE THAT ANY DISTURBANCES TO THE VERGE, TREES, PATHS, KERBS, ROADWAYS OR SERVICES OCCURING FROM EITHER CONSTRUCTION WORKS OR STORAGE OF MACHINERY/MATERIALS DURING THE CONSTRUCTION. WORKS ARE RECTIFIED TO THE SATISFACTION OF RELEVANT AUTHORITIES.

NO CARPARKING OR EQUIPMENT PARKING PERMITTED ON VERGES/OPEN SPACE.

NO SITE SHEDS, STORAGE SHEDS, SITE AMENITIES OR BILLBOARDS TO BE ERECTED ON VERGES.

NO CONSTRUCTION MATERIAL TO BE STORED ON VERGES.

NO WASH DOWN AREA WITHIN TREE PROTECTION ZONES.

HYDROEXCAVATION AND TREE PROTECTION METHODOLOGY

HYDRO EXCAVATION AND TREE PROTECTION METHODOLOGY' DETAILS THE METHOD THE CONTRACTOR SHALL USE AS A BASIS FOR HYDRO EXCAVATING WITHIN THE TPZS.

- ALL WORKS TO COMPLY WITH:
- AS4970:2009 PROTECTION OF TREES ON DEVELOPMENT SITES; AND
 - AS4373:2007 PRUNING OF AMENITY TREES. 2.3 HYDRO EXCAVATION PROCEDURE WITHIN TPZ

HYDROEXCAVATION PROCEDURE WITHIN TPZ

THE FOLLOWING PROCEDURE MUST BE FOLLOWED AT ALL TIMES WHEN EXCAVATING USING HYDRO EXCAVATION WITHIN ALL TPZS.

- ONLY AN EXPERIENCED AND COMPETENT HYDRO EXCAVATION OPERATOR (OPERATOR) SHALL OPERATE HYDRO VACUUM EXCAVATION EQUIPMENT.
- A QUALIFIED ARBORIST IS TO PROVIDE ON SITE ASSISTANCE TO THE OPERATOR, WHICH MAY INCLUDE:
 - ADVICE REGARDING DIFFERENT TREE SPECIES SPECIFIC ROOT SYSTEMS AND PARTICULAR SENSITIVITIES;
 - SUPERVISION OF HYDRO EXCAVATION TO ENSURE MINIMAL DAMAGE OCCURS TO ROOT SYSTEMS;
 - SUPERVISION OF ROOT PRUNING IF REQUIRED;
 - SUPERVISION OF BACKFILLING.
- 4 INCH (100MM) VACUUM SUCTION HOSE BE USED WITHIN ALL TPZS.
- THE OPERATOR IS REQUIRED TO USE A 45° FLAT FAN NOZZLE. A FLAT FAN NOZZLE IS OF SHORT LENGTH, SINGLE ORIFICE FITTING, THAT IS INSERTED INTO THE DIGGING END OF THE WAND AND AS SUCH THERE IS A SINGLE CONCENTRATED JET OF WATER EXITING FROM THE TIP OF THE NOZZLE WHICH SPRAYS WATER EVENLY. THE SPRAY IS WIDE AND REDUCES THE PRESSURE IMPACT ON THE ROOTS.

A ROTATING NOZZLE OR ROTARY NOZZLE MUST NEVER BE USED IN A TPZ. THE ROTATING NOZZLE IS A CONICALLY SHAPED NOZZLE THAT CONTAINS A SINGLE EXIT POINT AS WELL AS A ROTOR INSERT. THE WATER FLOWING THROUGH THE NOZZLE IS DISPERSED THE TIP OF THE NOZZLE IN A CONICAL SHAPE. THE ROTATING NOZZLE GIVES THE EXTREME PRESSURE AS MINIMUM AS 0°. THE PRESSURE OF A 0° SPRAY CAN DAMAGE WOOD BARK AND ROOTS.

- THE MAXIMUM WATER PRESSURE TO BE USED AT ANY TIME WITH A FLAT FAN STRAIGHT TIP NOZZLE DURING HYDRO EXCAVATION WITHIN A TPZ SHALL BE 1,500 PSI. ALL PRESSURE MEASUREMENTS ARE TO BE MONITORED USING A PRESSURE GAUGE MOUNTED ON HYDRO-EXCAVATION MACHINE.

- THE PRESSURISED BLAST WAND SHALL NEVER REMAIN MOTIONLESS.

- A DISTANCE OF 50 - 150MM SHALL ALWAYS BE MAINTAINED BETWEEN THE END OF THE PRESSURE WAND NOZZLE AND THE SUBSOIL. THE NOZZLE SHALL NEVER BE INSERTED INTO THE SUBSOIL WHILE EXCAVATING IN A TPZ.

- HYDRO EXCAVATION INITIALLY SHALL BE COMMENCED AS FAR AS POSSIBLE FROM THE DRIP LINE AND IF THE SERVICES ARE NOT FOUND, HYDRO-EXCAVATION SHOULD CONTINUE TOWARDS THE DRIP LINE USING A SLIT TRENCHING TECHNIQUE.

- IF THE MAJOR DAMAGE TO STRUCTURAL ROOTS OCCURS WHILE UNDERTAKING HYDRO EXCAVATION, THE OPERATOR MUST STOP THE OPERATION IMMEDIATELY. DOCUMENT THE DAMAGE WITH PHOTOGRAPHS AND CONTACT THE PROJECT ARBORIST OR CLIENTS URBAN TREE MANAGER.

- BACKFILL AND RESTORATION OF DISTURBED AREAS.

REV.	DESCRIPTION	DRAWN	APPROVED	DATE
A	FOR APPROVAL	HJ	NH	20SEP22
B	FOR WORKS APPROVAL	JS	NH	07JUN23
-	-	-	-	-
-	-	-	-	-
-	-	-	-	-
-	-	-	-	-
-	-	-	-	-
-	-	-	-	-
-	-	-	-	-
-	-	-	-	-

REV.	DESCRIPTION	DRAWN	APPROVED	DATE
A	FOR APPROVAL	HJ	NH	20SEP22
B	FOR WORKS APPROVAL	JS	NH	07JUN23
-	-	-	-	-
-	-	-	-	-
-	-	-	-	-
-	-	-	-	-
-	-	-	-	-
-	-	-	-	-
-	-	-	-	-
-	-	-	-	-

HARRIS HOBBS

LANDSCAPES

Landscape Architect

16 ROBE STREET
DEAKIN ACT 2600
p +61 2 6273 4661
e hhl@hhl.com.au
w www.hhl.com.au

Harris Hobbs Landscapes acknowledges the Ngunawal people, the traditional custodians of the land on which we live, work, rest and play.

SCALE @ A3

1:200

DATE

JUNE 2023

PROJECT

12 HOBART AVENUE FORREST ACT

CLIENT

NAME

DRAWING TITLE

TREE PROTECTION PLAN

STATUS

FOR WORKS APPROVAL

JOB

22093

REV

B

DWG

202