

1A CONSTITUTION AVENUE CITY BLOCK 40 SECTION 19

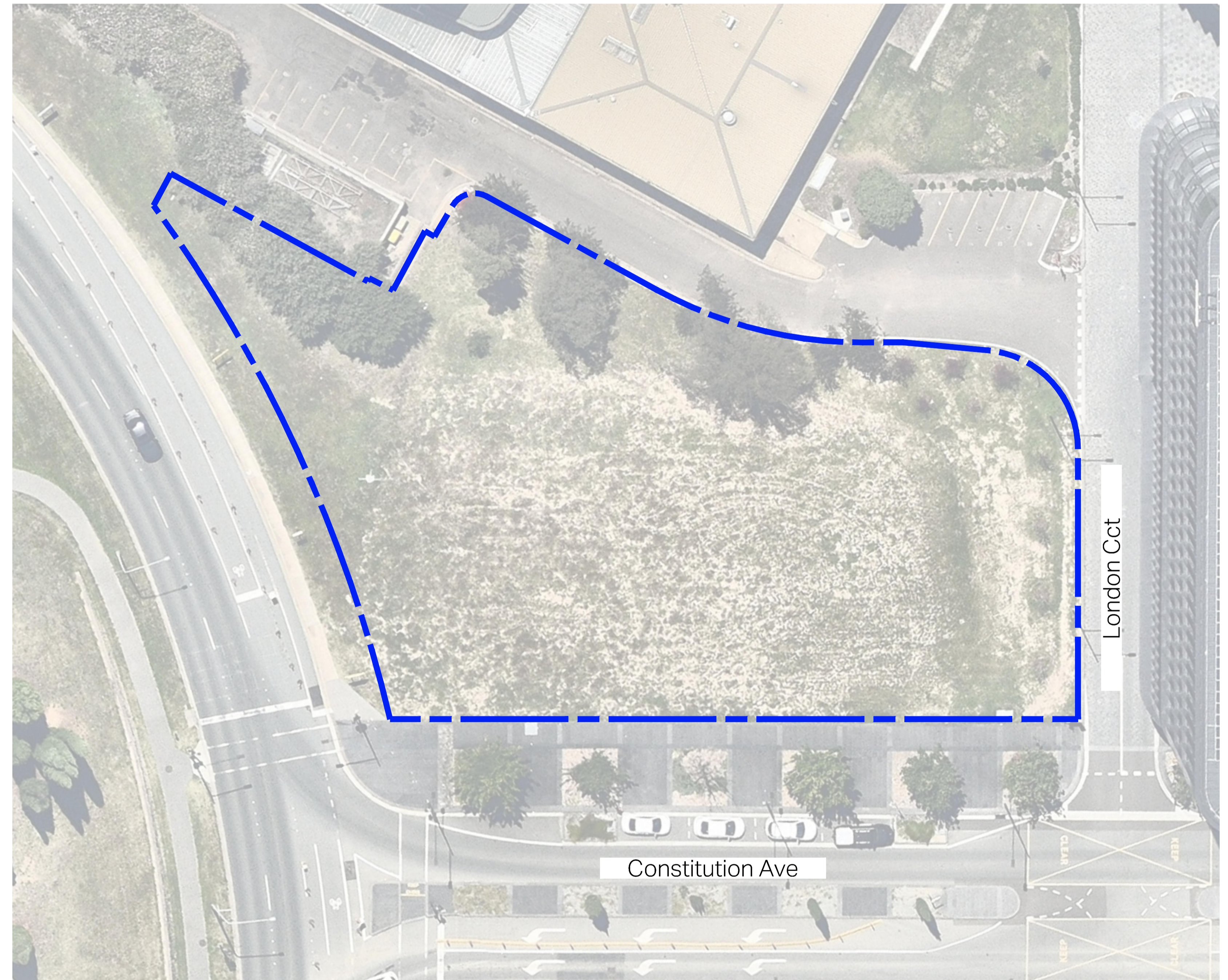
WORKS APPROVAL

DRAWING REGISTER

LANDSCAPE WORKS

DWG#	TITLE	DATE	REVISION
1780 - 000	COVER PAGE	06.09.24	D
1780 - 201	SCHEDULE - HARD WOKS	06.09.24	D
1780 - 202	SCHEDULE - SOFT WOKS	06.09.24	D
1780 - 301	LANDSCAPE PLAN - SHEET 1	06.09.24	D
1780 - 302	LANDSCAPE PLAN - SHEET 2	06.09.24	D
1780 - 401	GRADING PLAN - SHEET 1	06.09.24	C
1780 - 402	GRADING PLAN - SHEET 2	06.09.24	C
1780 - 901	MATERIAL	06.09.24	C

LOCATION PLAN



1:250@A1 1:500@A3

GENERAL NOTES

- Works to Unleased Territory Plan to be in accordance with TCCS Municipal Infrastructure Technical Specifications (MITS)
- Read drawings in conjunction with relevant specifications, contracts, and statutory approval conditions
- Figured dimensions take precedence to scaled measurements
- Drawings to be used only for the stated project and issue status

PAVEMENTS

Code	Description	Location	Substrate	Dimensions	Finish	Slip Resistance	Joints	Notes	Refer Detail	Supplier
P1	Austral Black Granite	Colonnade	On structure	897 x 447 x 40mm	Exfoliated	P5 (Wet)	3mm wide x 1-2mm deep, color match grout	-	-	-
P2	Austral Black Granite	Constitution Ave	Concrete slab, on ground	897 x 447 x 50mm	Exfoliated	P5 (Wet)	3mm wide x 1-2mm deep, color match grout	-	-	-
P3	Austral Black Granite	Vernon Circle	Concrete slab, on ground	897 x 447 x 60mm	Exfoliated	P5 (Wet)	3mm wide x 1-2mm deep, color match grout	-	-	-
P4	Austral Black Granite	TGSI base	On structure	ex. 897 x 447 x 40mm	Exfoliated	P5 (Wet)	3mm wide x 1-2mm deep, color match grout	-	-	-
P5	Austral Black Granite (hex)	Colonnade	On structure	Hexagonal 355mm x 50mm	Honed + waterjet (50% area) Exfoliated (25% area) Bush-hammered (25% area)	All P5 (Wet)	5mm wide x 1-2mm deep, color match grout	-	-	-
M1	Austral Black Granite (margin)	Colonnade	On structure	ex 297x597x40mm	Exfoliated	P5 (Wet)	3mm wide x 1-2mm deep, color match grout	-	-	-
M2	Austral Black Granite (margin)	Vernon Circle	Concrete slab, on ground	ex 297x597x60mm	Exfoliated	P5 (Wet)	3mm wide x 1-2mm deep, color match grout	-	-	-

Works in accordance with Constution Avenue Upgrade (CAU) Work as Executed

Code	Description	Location	Dimensions	Finish	Slip Resistance	Joints	Notes
P1-CAU	Austral Black Granite	Base / body paver	897x447x50mm	Exfoliated	TME	TME	All match Constitution Ave Upgrade
P3A-CAU	Wee Jasper random mix	Intersection transition & cobble	145 x 145 x 50mm	Split face / sawn edges	TME	TME	
P3B-CAU	Bluestone	Intersection transition paver	450 x 450 x 50mm	Bush hammered	TME	TME	
P5-CAU	Grandee Granite	Trim B	900 x 450 x 50mm	Exfoliated	TME	TME	
P6A-CAU	Austral Black Granite	Margin	900 x 450 x 50mm	Blasted finish	TME	TME	
P18-CAU	Austral Black Granite	Boundary infill	300 x 50mm x various lengths	Exfoliated	TME	TME	
P10A-CAU	Bluestone Trim	Trim C	300 x 600 x 50mm	Sawn	TME	TME	

Works in accordance with Engineer's documentation

Code	Description	Location	Substrate	Dimensions	Finish	Slip Resistance	Joints	Notes	Refer Detail	Supplier
P5-T	Granite, Austral Black (hex)	Knowles Pl + Theatre Ln	On structure	Hexagonal 355mm x 80mm (TBC by engineer)	Honed + waterjet (50% area) Exfoliated (25% area) Bush-hammered (25% area)	All P5 (Wet)	5mm wide x 1-2mm deep, color match grout	-	-	-

LANDINGS + STAIRS

Code	Description	Location	Dimensions (mm)	Finish	Slip Resistance	Joints	Notes	Refer Detail	Supplier
L1	Austral Black Granite (landing)	Colonnade	750d x varies max 190h	Exfoliated Rebated white stone nose inlay	P5 (Wet)	3mm color-matched grout, rake 1mm depth	Integral riser / tread	-	-
S1	Austral Black Granite (stair)	Colonnade	typ 300d x max 190h	Exfoliated Rebated white stone nose inlay	P5 (Wet)	3mm color-matched grout, rake 1mm depth	Integral riser / tread	-	-

FIXTURES + FURNITURE + UPSTANDS

Code	Description	Location	Dimension (mm)	Finish	Joints	Notes	Refer Detail	Supplier
C1	Cycle rail	Colonnade	TBC	TBC		Sub-surface mount	-	-
H1	Handrail	Colonnade stairs	To AS1428	Stainless steel		Site measure	-	-
T1	'TP' series tactile paving studs	Colonnade stairs	To AS1428	Stainless on dark		-	-	Latham
U1	Austral black Granite (upstand)	Vernon Circle	150w x max 200h	Exfoliated	3mm color-matched grout, rake 1mm depth	-	-	-

Works in accordance with Engineer's / Architect's documentation

Code	Description	Dimension (mm)	Notes
W1	Wall		
W2	Wall (temporary)		
TD	Trench Drain		
SW	Stormwater Pit		
O1	Outrigger Support Block (subterranean beneath garden mulch)	nom 600w x 600d	Form + location to be agreed with Evo + TCCS

LANDSCAPE ARCHITECT

redbox design group

02 6280 4949 (toll)

inbox@redboxdesigngroup.com.au

35 Kennedy Street, Kingston ACT 2604

PO Box 4575 Kingston ACT 2604

redboxdesigngroup.com.au

CONSULTANTS

ARCHITECT:

CIVIL:

ACCESS:

BATES SMART

SELLICK CONSULTANTS

ERIC MARTIN AND ASSOCIATES

CLIENT



REV	ISSUE	DATE	DRN	CHK
D	WORKS APPROVAL	06.09.24	XZ	DM
C	WORKS APPROVAL	24.06.24	XZ	DM
B	WORKS APPROVAL (CLIENT REVIEW)	14.06.24	DM	DM
A	30% SUBMISSION	15.03.24	DM	DM

NORTH

PROJECT

1A CONSTITUTION AVENUE
CITY BLOCK 40 SECTION 19

PROJECT No.

1780

SHEET

201

ISSUE

D

SCHEDULE
Hard works

SOFT WORKS

Code	Description	Location	Dimension (mm)	Notes	Refer Detail	Supplier
G1	Irrigated garden on ground	Vernon Circle, Theatre	min. 300 depth topsoil			
G2	Irrigated garden on structure	Undercroft	min. 500 depth topsoil			
G3	Non-irrigated dryland grass	Theatre	min. 100 imported topsoil			
R1	Root control barrier	Vernon Circle	900 Deep			
E1	Garden flush edge	Theatre + Vernon Circle		To match existing edge on theatre block		
SS1	Structural soil	Vernon Circle	TBC	Subject to utility + TCCS review		City Green

Works in accordance with Constution Avenue Upgrade (CAU) Work as Executed

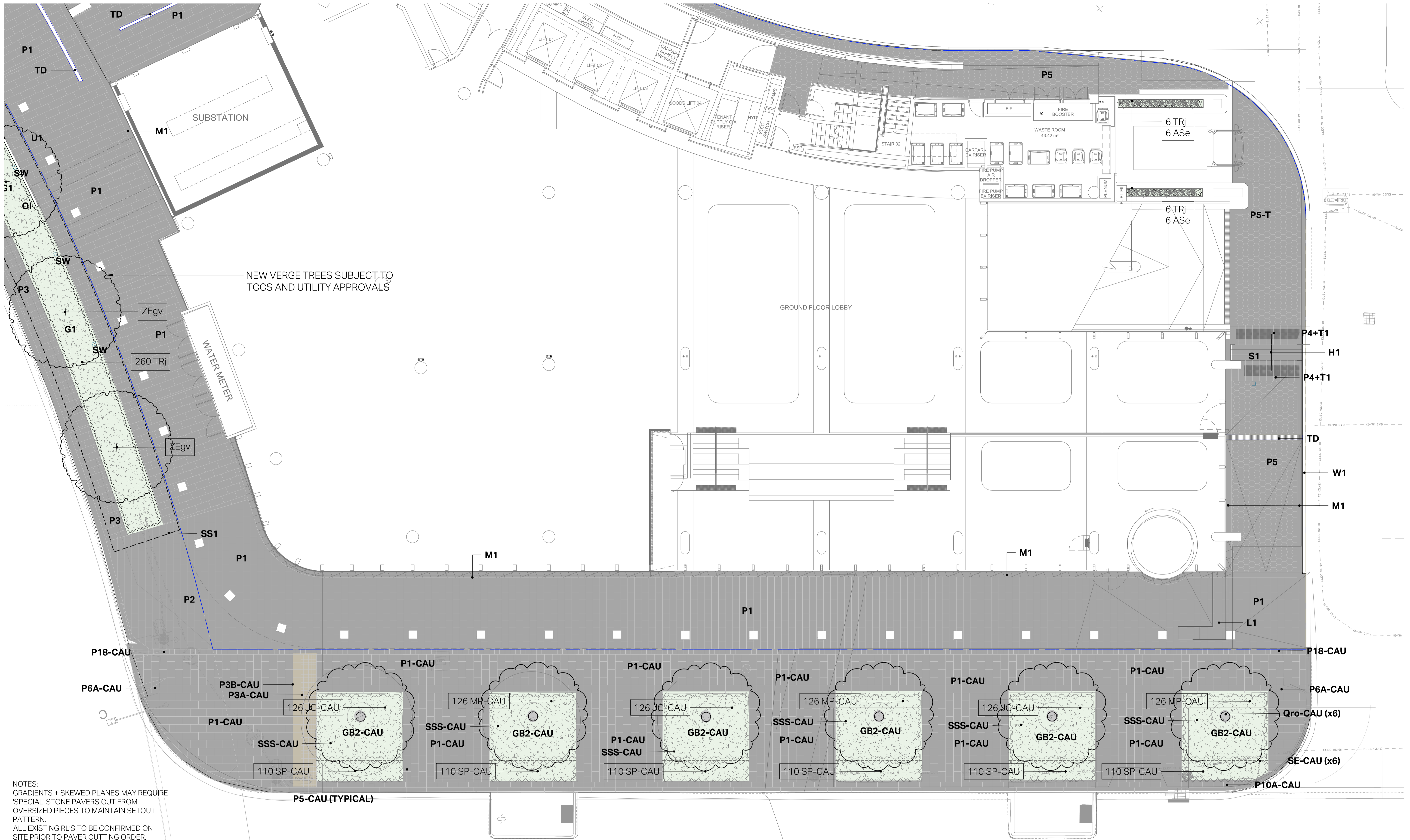
GB2-CAU	Garden bed - organic mulch				PT2 Dwg DLS-2703	
SE-CAU	Steel edge				Dwg DLS-2400	
SSS-CAU	Structural support soil	Constitution Avenue	2475x2535 per tree	To match existing (C.O.S.)	Dwg DLS-2401, DLS-2701,DLS-2702,DLS-2703	

PLANTING

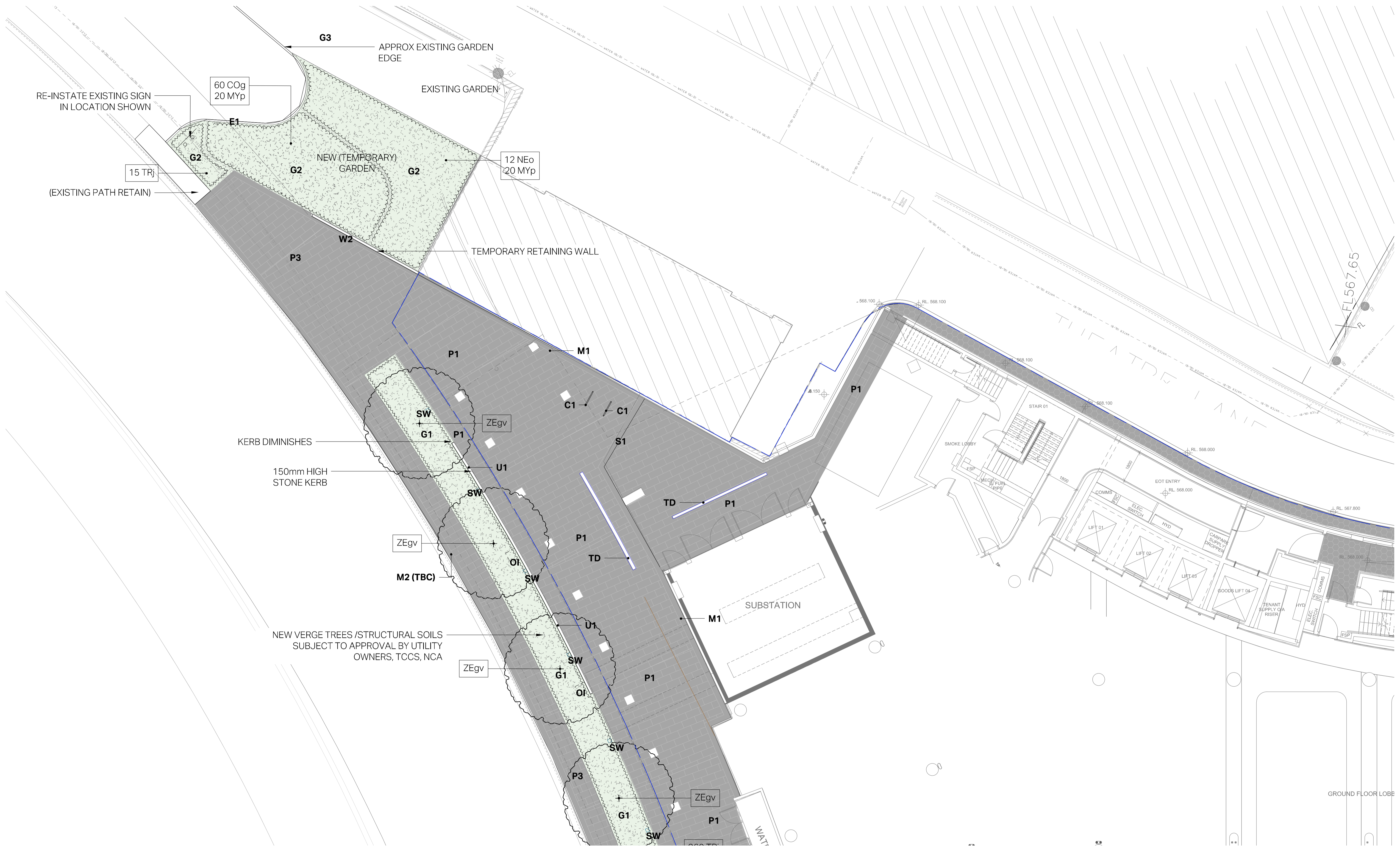
Code	Species	Supply size	Spacing	Quantity	Refer Detail
Trees					
ZEgv	Zelkova serrata 'Green Vase'	min. 45L, 3.0m high	As shown		
Shrubs + Groundcovers (INDICATIVE)					
ASe	Aspidistra elatior (Cast Iron Plant) NON-variegated	200mm	3/m2		
COg	Correa glabra	140mm pot	0.5m c/c		
MYp	Myoporum parvifolium	140mm pot	0.3m c/c		
NEo	Nerium oleander	200mm pot	1.2m c/c		
TRj	Trachelospermum jasminoides (Star jasmine)	200mm pot	0.4m c/c		

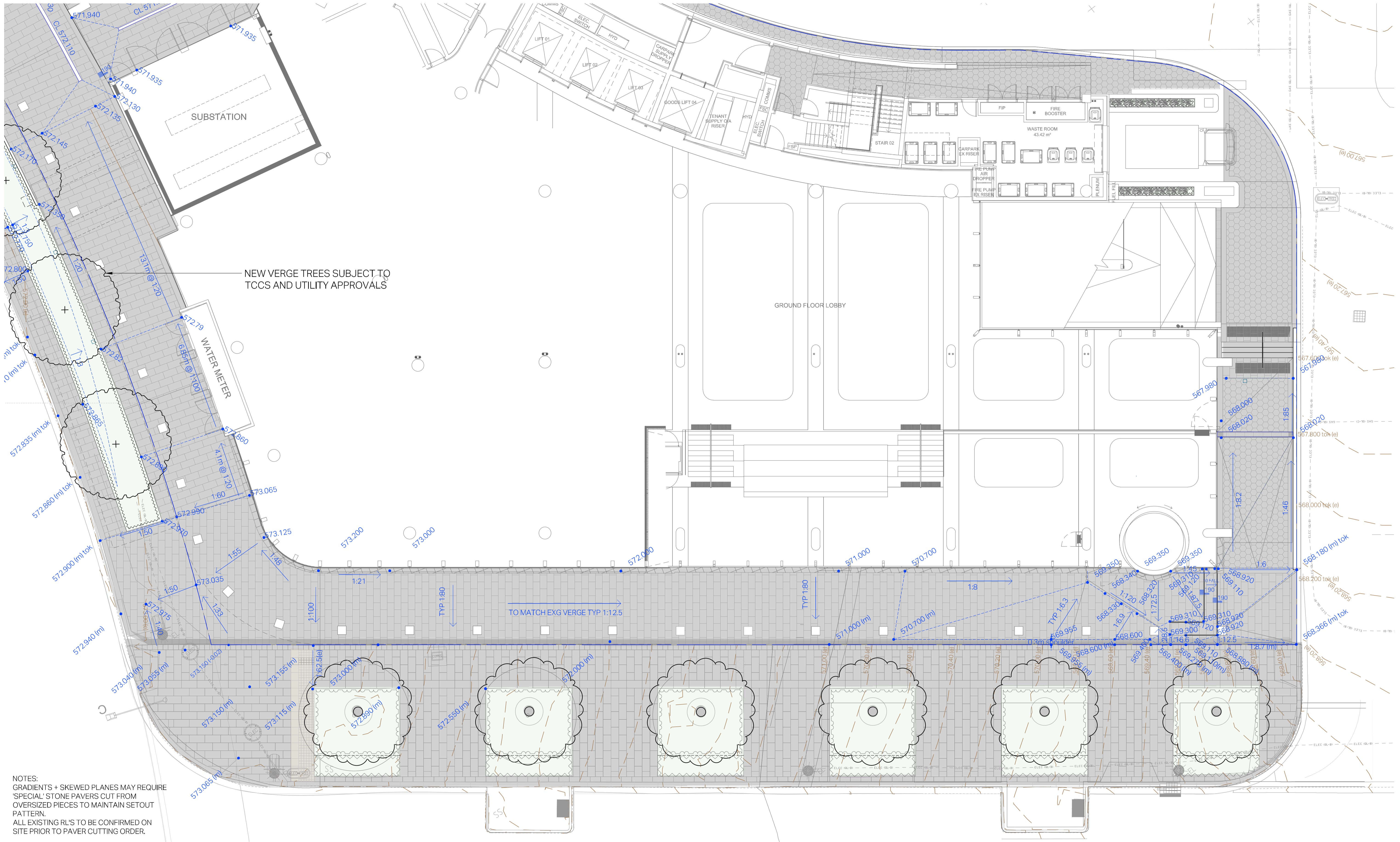
Works in accordance with Constution Avenue Upgrade (CAU) Work as Executed

Trees					
Qro-CAU	Quercus robur (English Oak)	2000L 8.5m high	As shown		
Shrubs + Groundcovers					
JC-CAU	Juniperus conferta 'Blue Pacific' (Pacific Blue Shore Juniper)	140mm pot	0.3m c/c		DLS-2400
MP-CAU	Myoporum parvifolium 'Chunky Boobialla' (Creeping Boobialla)	140mm pot	0.3m c/c		DLS-2400
Seasonal plantings					
SP-CAU	Zephyranthes candida (Rain Lily - White)	140mm pot	0.3m c/c		DLS-2400



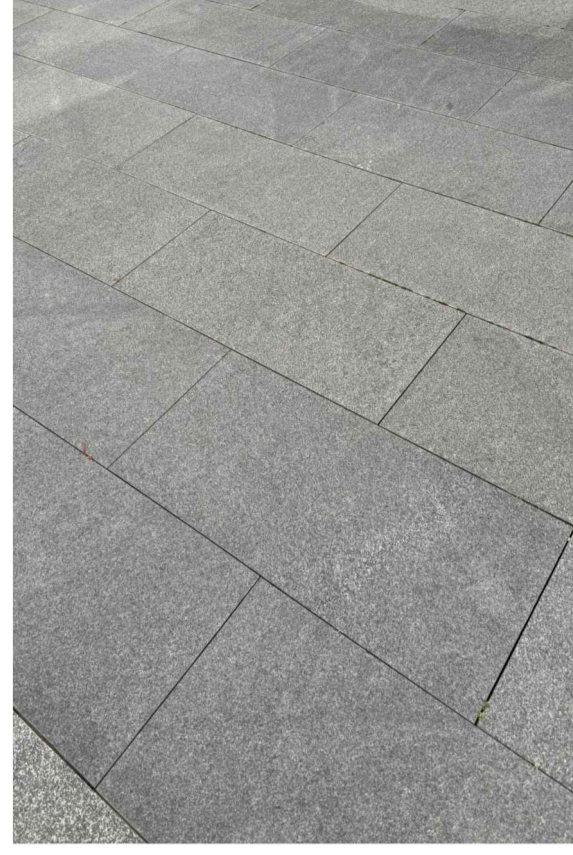
NOTES:
 GRADIENTS + SKEWED PLANES MAY REQUIRE 'SPECIAL' STONE PAVERS CUT FROM OVERSIZED PIECES TO MAINTAIN SETOUT PATTERN.
 ALL EXISTING RL'S TO BE CONFIRMED ON SITE PRIOR TO PAVER CUTTING ORDER.





NOTES:
 GRADIENTS + SKEWED PLANES MAY REQUIRE 'SPECIAL' STONE PAVERS CUT FROM OVERSIZED PIECES TO MAINTAIN SETOUT PATTERN.
 ALL EXISTING RL'S TO BE CONFIRMED ON SITE PRIOR TO PAVER CUTTING ORDER.

PAVEMENTS

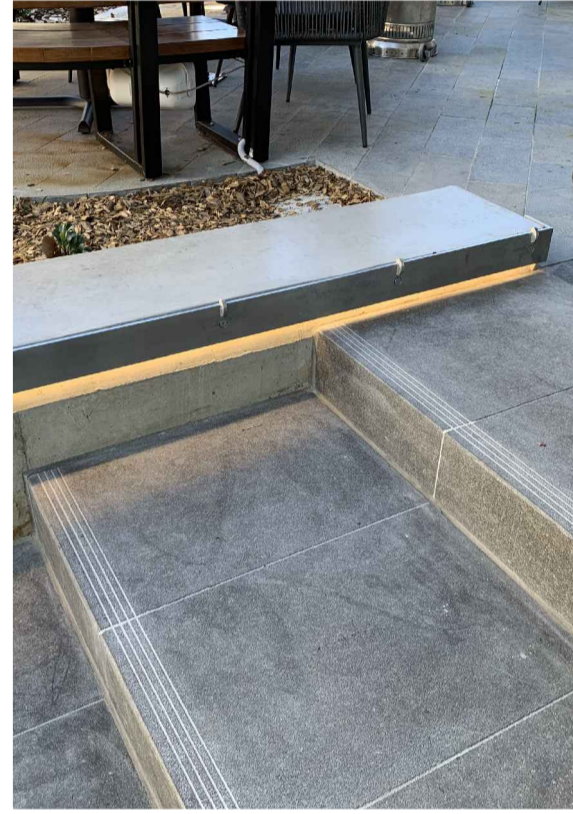


P1/P2/P3/P4/M1/M2
Austral black granite, exfoliated finish



P5
Austral black granite (hex), 50% honed and waterjet finish with 25% exfoliated finish

LANDING + STAIRS

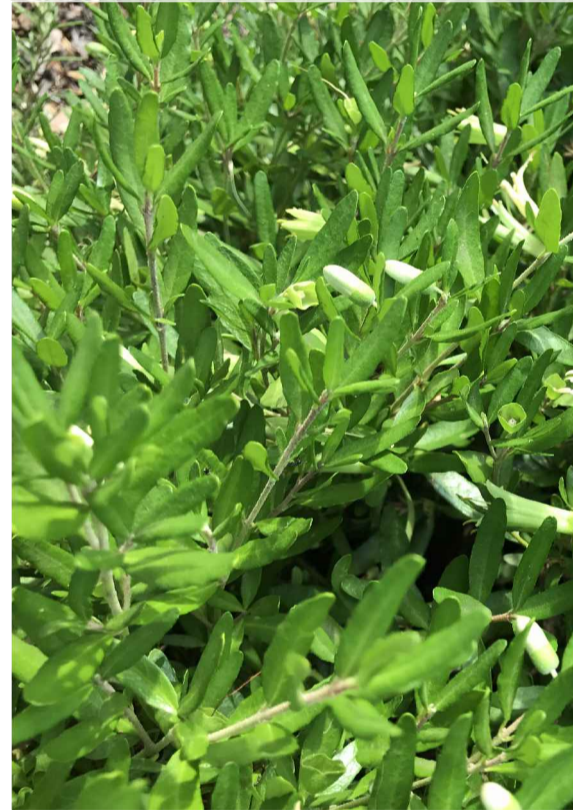


L1/S1
Austral black granite, exfoliated finish

PLANTING



Aspidistra elatior



Correa glabra



Myoporum parvifolium



Nerium oleander



Trachelospermum jasminoides (Star Jasmine)