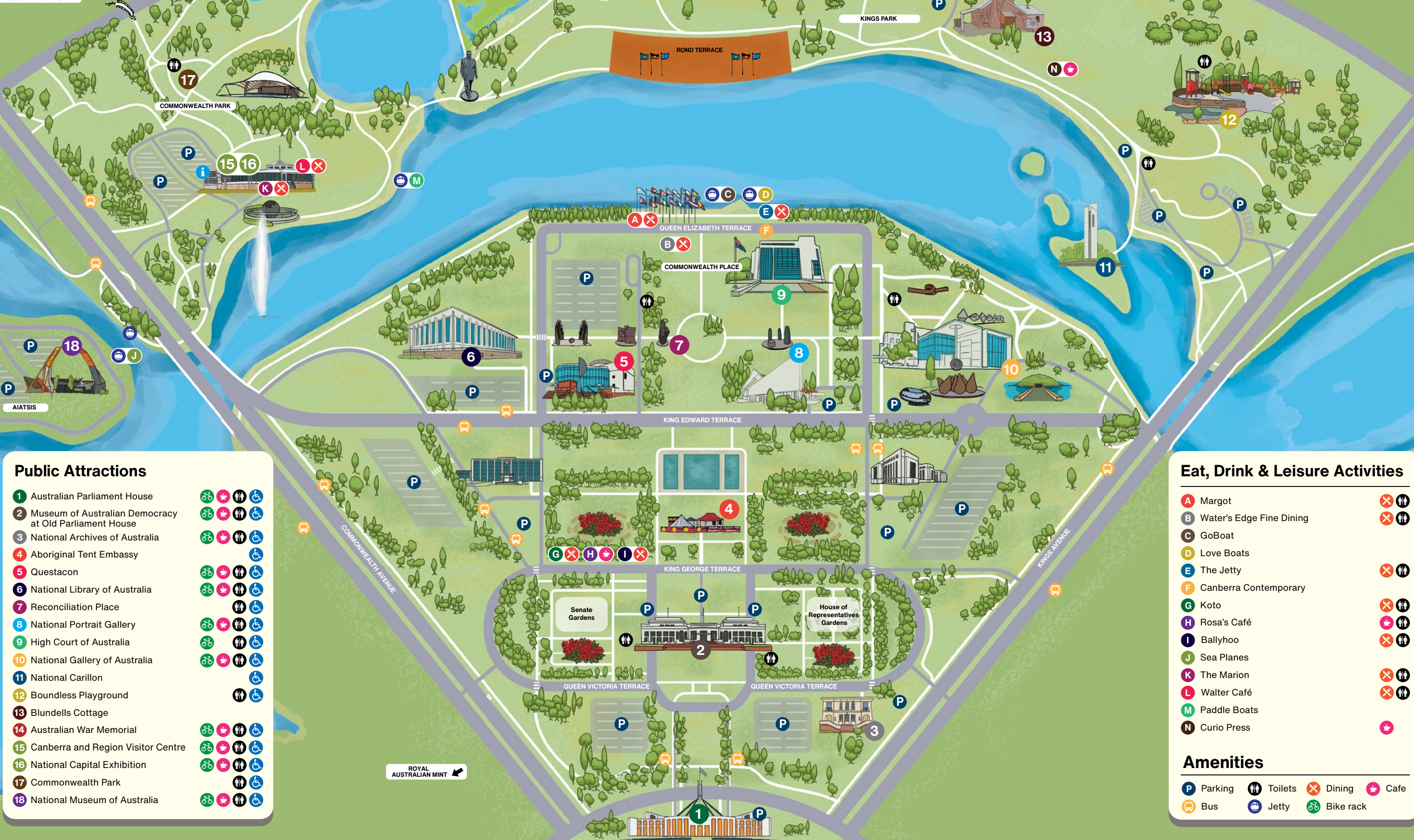




Australian Government  
National Capital Authority

NATIONAL TRIANGLE  
CANBERRA

NATIONAL BOTANIC GARDENS  
CITY CENTRE  
NATIONAL FILM AND SOUND ARCHIVES  
Footbridge



Public Attractions

- 1 Australian Parliament House
- 2 Museum of Australian Democracy at Old Parliament House
- 3 National Archives of Australia
- 4 Aboriginal Tent Embassy
- 5 Questacon
- 6 National Library of Australia
- 7 Reconciliation Place
- 8 National Portrait Gallery
- 9 High Court of Australia
- 10 National Gallery of Australia
- 11 National Carillon
- 12 Boundless Playground
- 13 Blundells Cottage
- 14 Australian War Memorial
- 15 Canberra and Region Visitor Centre
- 16 National Capital Exhibition
- 17 Commonwealth Park
- 18 National Museum of Australia

Eat, Drink & Leisure Activities

- A Margot
- B Water's Edge Fine Dining
- C GoBoat
- D Love Boats
- E The Jetty
- F Canberra Contemporary
- G Koto
- H Rosa's Café
- I Ballyhoo
- J Sea Planes
- K The Marion
- L Walter Café
- M Paddle Boats
- N Curio Press

Amenities

- P Parking
- Bus
- Toilets
- Jetty
- Dining
- Cafe
- Bike rack





### Commonwealth Park

Commonwealth Park is a large landscaped park which runs from the city centre to the edge of Lake Burley Griffin.

The park is the perfect place to explore, run, ride, play and picnic with its wide open grassed areas and intimate sculptured gardens, ponds and artworks.

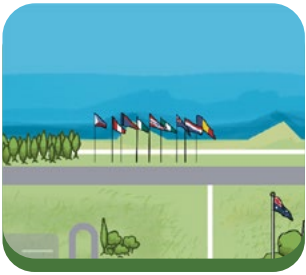
- ▶ Stage 88
- ▶ Castle Playground
- ▶ National Capital Exhibition
- ▶ Canberra and Region Visitors Centre
- ▶ Captain Cook Memorial Jet
- ▶ Sculptures and public art:
  - » Two Figures by Barbara Hepworth
  - » Dance of the Secateurs
  - » Resting place of the Dragonfly
  - » Sir Robert Menzies Statue



### Kings Park

Along with Commonwealth Park and Rond Terrace, this forms the central parklands noted on the original Griffin design for the central basin of Lake Burley Griffin. It has been planted with Australian and introduced species and is also the site of several national, civilian memorials.

- ▶ Rond Terrace – Central axis of Griffin design
- ▶ Boundless Playground
- ▶ National Carillon
- ▶ Blundells Cottage
- ▶ Curio Press Espresso Bar
- ▶ Memorials:
  - » National Police
  - » Indian Ocean Tsunami
  - » Pioneer Women
  - » Merchant Navy



### Commonwealth Place

Commonwealth Place comprises a grass-cupped square of approximately 100 metres by 50 metres on the southern shore of Lake Burley Griffin in the National Triangle. It is a multi-use public space and it is where you will find a number of cafes, restaurants and tourism operators.

- ▶ Take a Cruise
- ▶ Hire a Go Boat
- ▶ Canberra Contemporary
- ▶ International Flag Display
- ▶ Reconciliation Place
- ▶ Cafes and bars
- ▶ Hire a paddle boat



### National Gallery of Australia

The National Gallery is Australia's national visual arts institution dedicated to collecting, sharing and celebrating art from Australia and the world.

Open 10am – 5pm daily (closed Christmas Day)

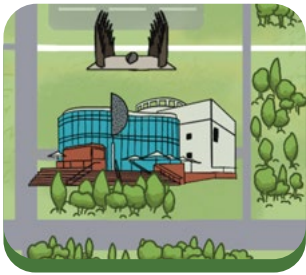
- ▶ National Sculpture Garden
- ▶ James Turrell Within Without
- ▶ George Baldessin Pear – version number 2
- ▶ Lindy Lee Ouroboros



### National Portrait Gallery

Explore Australia's evolving identity at the National Portrait Gallery. Free entry to collection galleries; ticketed temporary exhibitions and programs.

Open 10am – 5pm daily (closed Christmas Day)



### Questacon

The National Science and Technology Centre is an interactive science centre with hands-on activities for all ages. Explore eight galleries, discover engaging exhibits and enjoy science shows and experiments with the whole family.

Open 9am – 5pm daily. Ticketed entry. (closed Christmas Day)

- ▶ Questacon Science Garden
- ▶ Rock Xylophone
- ▶ Granite Ball
- ▶ The Astronomer
- ▶ NKRYPT
- ▶ Einstein Sculpture
- ▶ Photovoltaic Flowers
- ▶ Reconciliation Place Walk, including public art, sculpture and memorials



### National Library of Australia

Whether you're studious or just curious, you're always welcome at the National Library. Join our free daily tour at 11 am to discover what we do and how you can access our collections.

Opening hours available on website

- ▶ Peace Park
- ▶ Australians of the Year Walk
- ▶ Patrick White Lawns
- ▶ National Library of Australia Fountain
- ▶ Centenary of the Age Pension Commemoration
- ▶ Treasury Fountain
- ▶ Albert Hall



### Museum of Australian Democracy at Old Parliament House

The Museum of Australian Democracy at Old Parliament House is located inside a heritage-listed building that was once home to Australia's Parliament.

Open 9am – 5pm daily (closed Christmas Day)

- ▶ Senate and House of Representatives Rose Gardens
- ▶ Susan Ryan Sculpture
- ▶ Magna Carta Place
- ▶ Neville Bonner Commemoration
- ▶ Centenary of Women's Suffrage Commemorative Fountain
- ▶ Dame Dorothy Tangney and Dame Enid Lyons Sculpture
- ▶ Aboriginal Tent Embassy

### High Court of Australia

Visit the heritage listed High Court of Australia, with public access to the Great Hall and three court rooms, a focus for court activities.

Open 9.45am – 4.30pm Monday – Friday, public holidays excepted.

- ▶ Geoface Distributor sculpture
- ▶ Parliament House Vista and land axis

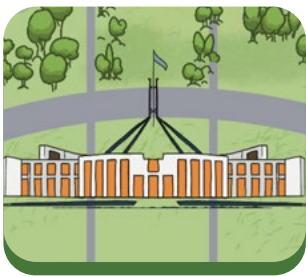


### National Archives of Australia

Explore National Archives of Australia in historic East Block, featuring exhibitions that bring the national archival collection to life.

Open 9am – 5pm daily

- ▶ Constitution Place
- ▶ Bunya Pine Tree
- ▶ Sir Edmund Barton Memorial



### Australian Parliament House

Visit Australian Parliament House and experience Australia's robust democracy in action. Enjoy guided tours, art collections, dining and shopping.

Open 9am – 5pm daily (closed Christmas Day)

- ▶ Federation Mall
- ▶ Commencement Column Foundation Stone
- ▶ Surveyor's Hut
- ▶ Parliament House Vista
- ▶ Parliament House native gardens, formal gardens and Chinese Lions
- ▶ RSL Fountain
- ▶ Armillary Sphere Sundial
- ▶ Forecourt Mosaic



### Australian War Memorial

Visit the Australian War Memorial and discover the Australian experience of war, conflicts, and peacekeeping operations.

Open 10am – 4pm daily (closed Christmas Day)

- ▶ Australian Hellenic Memorial
- ▶ Australian Army National Memorial
- ▶ Australian National Korean War Memorial
- ▶ Australian Vietnam Forces National Memorial
- ▶ Desert Mounted Corps Memorial
- ▶ Boer War Memorial
- ▶ The New Zealand Memorial



### National Museum of Australia

Learn about key moments, people and places in Australian history and culture. Entry is free though costs apply for some events and special exhibitions.

Open 9am – 5pm daily (closed Christmas Day)

- ▶ Bogong Moths
- ▶ The Garden of Australian Dreams

▶ = nearby landmarks

## About the National Triangle

Free and accessible 365 days a year, the National Triangle is a Cultural Institution without walls. Home to the Cultural Icons, this precinct houses the national treasures, cherished monuments and stories of our people. Explore the beautiful planned architecture and lush parks and gardens and enjoy the many places to eat and drink.



Find out more about our National institutions, including galleries, attractions and historic buildings



### Ways to get around

**Walking and running** - There are many walking paths through the triangle, and most things can be reached by foot.

**Cycling** - The National Triangle features many dedicated cycle paths, many right along the lake.

**Scooters** - Dedicated cycling paths can also be used by scooters, and footpaths are also available for speedy transit.

**Cars and public transport** - The triangle has dedicated and shared zones for cars and public transport, and plenty of parking near major attractions.

### Did you know?

The **High Court** building is forty metres tall and is mainly constructed of concrete and glass. The High Court runs free public tours from Monday – Friday.

There are 57 bells in the **National Carillon**, ranging from seven kilograms to six tonnes.

Over 110 flags are displayed at the **International Flag Display**, representing those nations that maintain a diplomatic presence in Canberra.

The **Australians of the Year Walk**, uses metal strips in the pathway and the plinths themselves represent part of the music score of Advance Australia Fair.

**Free parking** on weekends with NCA parking lots.

### Places to visit nearby

- ▶ Royal Australian Mint is only a short drive away in the suburb of Deakin
- ▶ National Film and Sound Archive in Acton
- ▶ National Zoo and Aquarium
- ▶ Australian National Botanical Gardens
- ▶ National Arboretum Canberra
- ▶ Take a self-guided drive through Canberra's diplomatic estate, Yarralumla, Deakin and O'Malley
- ▶ Canberra Museum and Gallery (CMAG)
- ▶ Canberra Theatre Centre