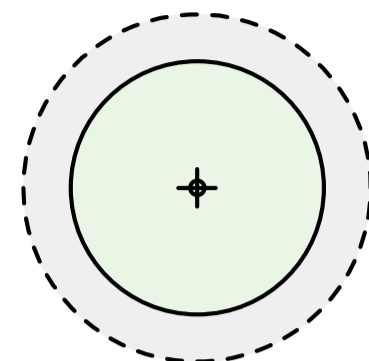
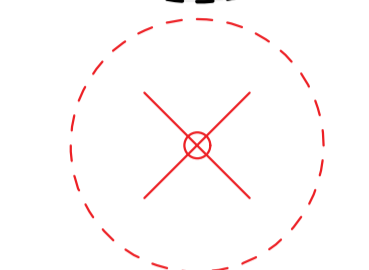
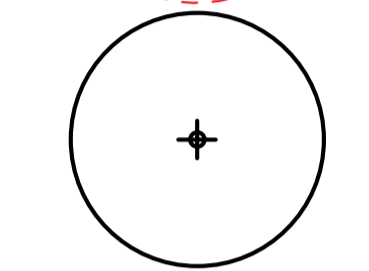



LEGEND

-  protected trees retained + 2.0m Tree Protection Zone
-  protected trees proposed for removal
-  non protected trees retained
-  structural root zone (SRZ)

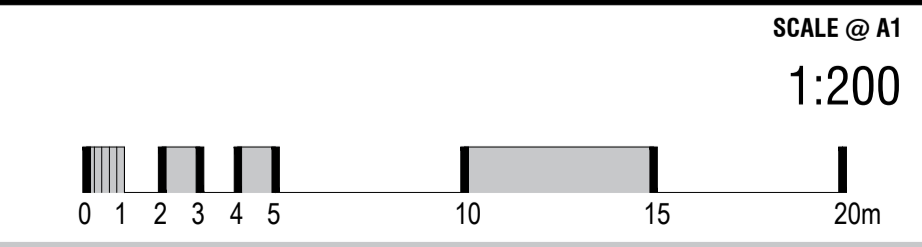
TREE ASSESSMENT SCHEDULE

TREE NO.	SPECIES	HEIGHT (m)	WIDTH (m)	TRUNKS (no.)	TRUNK CIRC. (mm)	RATING	PROTECTED	PUBLIC TREE	MATURE NATIVE TREE	REGISTERED	RECOMMENDATION	COMMENTS
1	<i>Fraxinus ssp</i>	13	4	1	750	FAIR	YES	YES	NO	NO	RETAIN	
2	<i>Cupressus torulosa</i>	9	2	1	850	POOR	YES	YES	NO	NO	REMOVE	inconsistent with street trees Canterbury Crescent Tree to be removed subject to approval
3	<i>Fraxinus ssp</i>	11	4	1	750	FAIR	YES	YES	NO	NO	REMOVE	
4	<i>Cupressus arozonica</i>	5	4	1	700	FAIR	YES	YES	NO	NO	REMOVE	inconsistent with street trees Canterbury Crescent Tree to be removed subject to approval
5	<i>Cupressus torulosa</i>	9	3	1	7450	FAIR	YES	YES	NO	NO	REMOVE	inconsistent with street trees Canterbury Crescent Tree to be removed subject to approval
6	<i>Fraxinus ssp</i>	11	8	1	750	FAIR	YES	YES	NO	NO	RETAIN	
7	<i>Cupressus torulosa</i>	9	1.5	1	700	GOOD	YES	NO	NO	NO	REMOVE	Tree to be removed subject to approval
8	<i>Quercus palustris</i>	18	12	1	2100	GOOD	YES	NO	NO	NO	RETAIN	
9	<i>Quercus palustris</i>	23	10	1	2100	GOOD	YES	NO	NO	NO	RETAIN	
10	<i>Quercus palustris</i>	14	5	1	1200	POOR	YES	NO	NO	NO	REMOVE	Poor condition suppressed by #12 Tree to be removed subject to approval
11	<i>Quercus palustris</i>	15	4	1	1100	POOR	YES	NO	NO	NO	REMOVE	Poor condition suppressed by #12 Tree to be removed subject to approval
12	<i>Quercus palustris</i>	20	10	1	2400	GOOD	YES	NO	NO	NO	REMOVE	Tree to be removed subject to approval
13	<i>Cupressus torulosa</i>	12	4	1	700	FAIR	YES	NO	NO	NO	RETAIN	
14	<i>Cupressus torulosa</i>	9	5	1	850	FAIR	YES	NO	NO	NO	REMOVE	Tree to be removed subject to approval
15	<i>Fraxinus ssp</i>	8	6	3	3000	POOR	YES	NO	NO	NO	REMOVE	Lopped at 8m under wires Tree to be removed subject to approval
16	<i>Pistachia chinensis</i>	15	12	1	1200	GOOD	YES	NO	NO	NO	REMOVE	Tree to be removed subject to approval
17	<i>Platanus orientalis</i>	17	8	1	2000	POOR	YES	NO	NO	NO	REMOVE	Dead leader Tree to be removed subject to approval
18	<i>Fraxinus ssp</i>	14	6	1	900	FAIR	YES	NO	NO	NO	REMOVE	
19	<i>Cupressus sempervirens</i>	18	3	1	1900	GOOD	YES	NO	NO	NO	RETAIN	Neighbouring block
20	<i>Conifer ssp</i>	9	4	1	800	FAIR	YES	NO	NO	NO	REMOVE	Tree to be removed subject to approval
21	<i>Fraxinus ssp</i>	16	6	1	1250	GOOD	YES	NO	NO	NO	REMOVE	Tree to be removed subject to approval
22	<i>Fraxinus ssp</i>	14	8	4	3400	FAIR	YES	NO	NO	NO	REMOVE	Tree to be removed subject to approval
23	<i>Fraxinus ssp</i>	16	8	1	1000	FAIR	YES	NO	NO	NO	REMOVE	Tree to be removed subject to approval

REFER 202 FOR TREE ASSESSMENT PHOTOS

REV.	DESCRIPTION	DRAWN	APPROVED	DATE
A	FOR REVIEW	SP,HJ	NH	04DEC25
B	FOR APPROVAL	HJ	NH	08DEC25
C	FOR APPROVAL	HJ	NH	02MAR26
D	FOR APPROVAL	HJ	NH	18MAR26
-	-	-	-	-
-	-	-	-	-
-	-	-	-	-
-	-	-	-	-
-	-	-	-	-

HARRIS HOBBS LANDSCAPES Landscape Architect
 16 ROBE STREET DEAKIN ACT 3600
 p +61 2 6273 4661 e hh@hhl.com.au w www.hhl.com.au

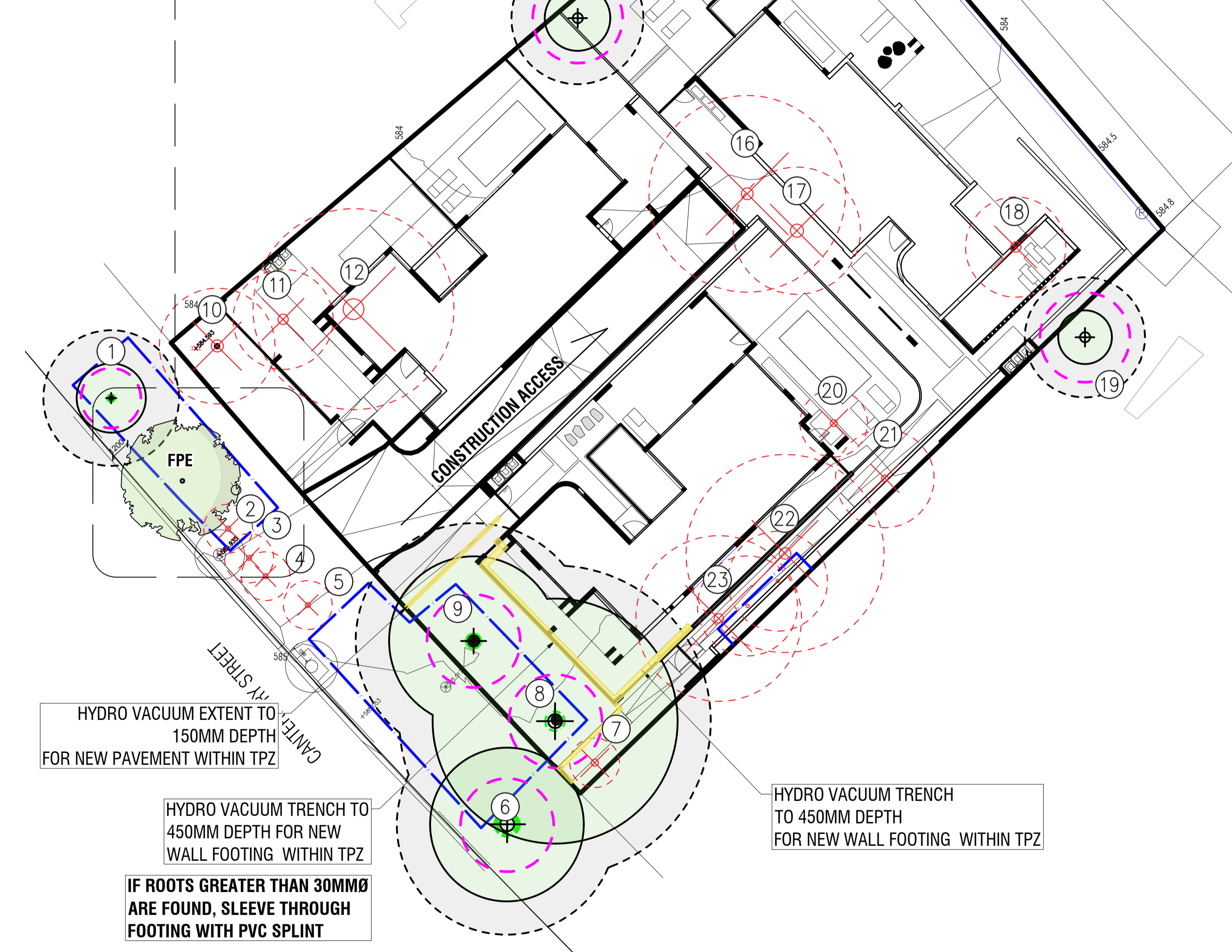
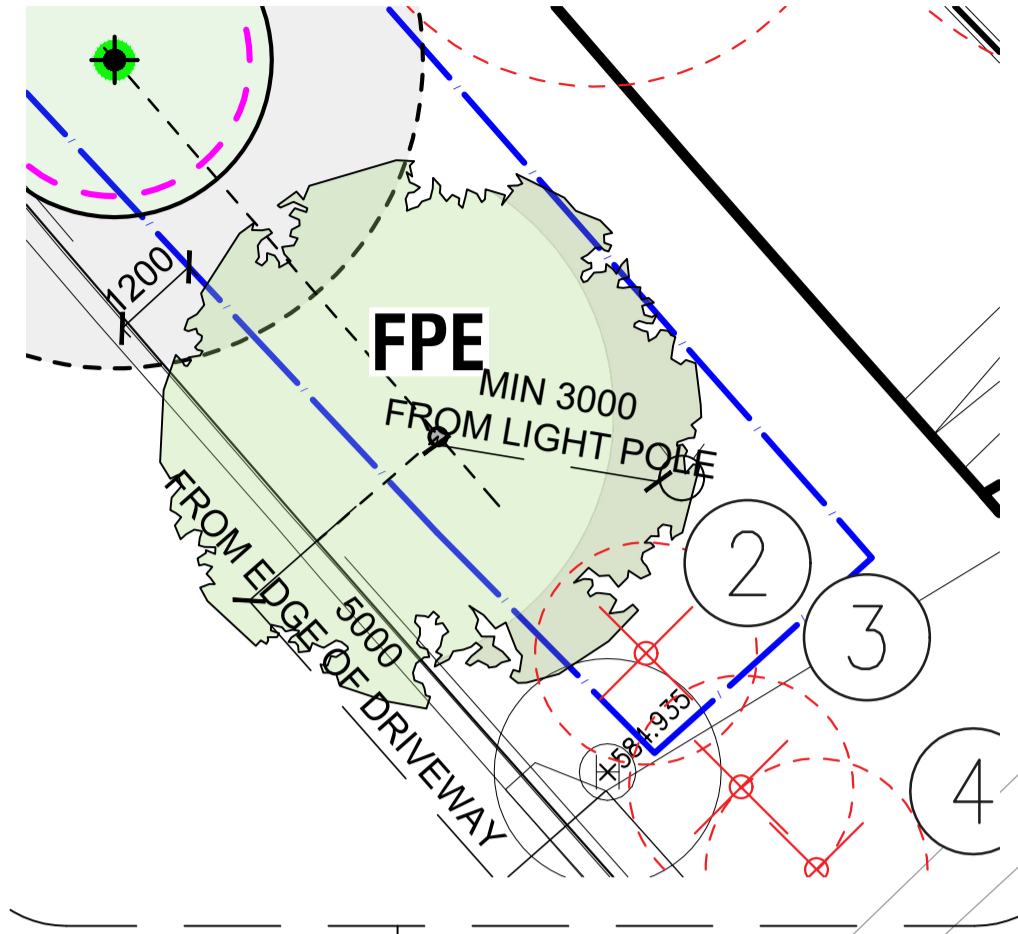


DATE: MARCH 2026
 PROJECT: 4 CANTERBURY CRES, FORREST
 CLIENT: NTA CONSTRUCTIONS
 DRAWING TITLE: TREE ASSESSMENT
 STATUS: FOR APPROVAL
 JOB: 25184
 REV: D
 DWG: 201

Harris Hobbs Landscapes acknowledges the Ngurnawal people, the traditional custodians of the land on which we live, work, rest and play.

PLANT SCHEDULE - OFFSITE

TREE	SYM	NAME	SIZE	QTY
FPE		Fraxinus pennsylvanica	75L	1



HYDRO VACUUM EXTENT TO 150MM DEPTH FOR NEW PAVEMENT WITHIN TPZ

HYDRO VACUUM TRENCH TO 450MM DEPTH FOR NEW WALL FOOTING WITHIN TPZ

IF ROOTS GREATER THAN 30MMØ ARE FOUND, SLEEVE THROUGH FOOTING WITH PVC SPLINT

HYDRO VACUUM TRENCH TO 450MM DEPTH FOR NEW WALL FOOTING WITHIN TPZ

LEGEND

- protected trees retained +2.0m Tree Protection Zone
- protected trees proposed for removal
- non protected trees retained
- structural root zone (SRZ)
- trunk protection
- temporary construction fencing
- hydro vacuum trench to max 450m depth

TREE ASSESSMENT PHOTOS (RETAINED TREES)



TREE ASSESSMENT SCHEDULE

TREE NO.	SPECIES	HEIGHT (m)	WIDTH (m)	TRUNKS (no.)	TRUNK CIRC. (mm)	RATING	PROTECTED	PUBLIC TREE	MATURE NATIVE TREE	REGISTERED	RECOMMENDATION	COMMENTS
1	Fraxinus ssp	13	4	1	750	FAIR	YES	YES	NO	NO	RETAIN	
2	Cupressus torulosa	9	2	1	850	POOR	YES	YES	NO	NO	REMOVE	inconsistent with street trees Canterbury Crescent Tree to be removed subject to approval
3	Fraxinus ssp	11	4	1	750	FAIR	YES	YES	NO	NO	REMOVE	
4	Cupressus arozonica	5	4	1	700	FAIR	YES	YES	NO	NO	REMOVE	inconsistent with street trees Canterbury Crescent Tree to be removed subject to approval
5	Cupressus torulosa	9	3	1	7450	FAIR	YES	YES	NO	NO	REMOVE	inconsistent with street trees Canterbury Crescent Tree to be removed subject to approval
6	Fraxinus ssp	11	8	1	750	FAIR	YES	YES	NO	NO	RETAIN	
7	Cupressus torulosa	9	1.5	1	700	GOOD	YES	NO	NO	NO	REMOVE	Tree to be removed subject to approval
8	Quercus palustris	18	12	1	2100	GOOD	YES	NO	NO	NO	RETAIN	
9	Quercus palustris	23	10	1	2100	GOOD	YES	NO	NO	NO	RETAIN	
10	Quercus palustris	14	5	1	1200	POOR	YES	NO	NO	NO	REMOVE	Poor condition suppressed by #12 Tree to be removed subject to approval
11	Quercus palustris	15	4	1	1100	POOR	YES	NO	NO	NO	REMOVE	Poor condition suppressed by #12 Tree to be removed subject to approval
12	Quercus palustris	20	10	1	2400	GOOD	YES	NO	NO	NO	REMOVE	Tree to be removed subject to approval
13	Cupressus torulosa	12	4	1	700	FAIR	YES	NO	NO	NO	RETAIN	
14	Cupressus torulosa	9	5	1	850	FAIR	YES	NO	NO	NO	REMOVE	Tree to be removed subject to approval
15	Fraxinus ssp	8	6	3	3000	POOR	YES	NO	NO	NO	REMOVE	Lopped at 8m under wires Tree to be removed subject to approval
16	Pistachia chinensis	15	12	1	1200	GOOD	YES	NO	NO	NO	REMOVE	Tree to be removed subject to approval
17	Platanus orientalis	17	8	1	2000	POOR	YES	NO	NO	NO	REMOVE	Dead leader Tree to be removed subject to approval
18	Fraxinus ssp	14	6	1	900	FAIR	YES	NO	NO	NO	REMOVE	
19	Cupressus sempervirens	18	3	1	1900	GOOD	YES	NO	NO	NO	RETAIN	Neighbouring block
20	Conifer spp	9	4	1	800	FAIR	YES	NO	NO	NO	REMOVE	Tree to be removed subject to approval
21	Fraxinus ssp	16	6	1	1250	GOOD	YES	NO	NO	NO	REMOVE	Tree to be removed subject to approval
22	Fraxinus ssp	14	8	4	3400	FAIR	YES	NO	NO	NO	REMOVE	Tree to be removed subject to approval
23	Fraxinus ssp	16	8	1	1000	FAIR	YES	NO	NO	NO	REMOVE	Tree to be removed subject to approval

REFER 204 TREE MANAGEMENT PLAN (TMP) NOTES

REV.	DESCRIPTION	DRAWN	APPROVED	DATE
A	FOR APPROVAL	HJ	NH	08DEC25
B	FOR APPROVAL	HJ	NH	02MAR26
C	FOR APPROVAL	HJ	NH	18MAR26

HARRIS HOBBS LANDSCAPES Landscape Architect
 16 ROBE STREET DEAKIN ACT 3600
 p +61 2 4273 4661 e hh@hhl.com.au w www.hhl.com.au
 Harris Hobbs Landscapes acknowledges the Ngurnawal people, the traditional custodians of the land on which we live, work, rest and play.

SCALE @ A1
1:200

DATE: MARCH 2026
 PROJECT: 4 CANTERBURY CRES, FORREST
 CLIENT: NTA CONSTRUCTIONS
 DRAWING TITLE: TREE MANAGEMENT PLAN
 STATUS: FOR APPROVAL
 JOB: 25184
 REV: C
 DWG: 203

CANTERBURY STREET



LEGEND

- existing trees retained +SRZ
- proposed deciduous trees
- proposed evergreen trees
- conifers
- shrubs
- ferns
- accent planting
- ground cover
- climbers
- irrigated grass
- bitumen driveway
- paving type A TBC
- mulched surface
- gravel mulch
- mowing edge
- pool fence
- steel planter/ ring planter; 600mm high

NOTE:
GARDEN AREAS IRRIGATED WITH DRIP IRRIGATION,
GRASS AREAS IRRIGATED WITH POP UP IRRIGATION

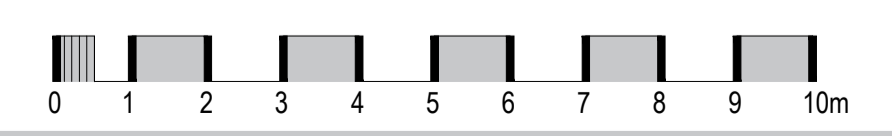
REFER 401 FOR PLANT SCHEDULE

AREAS

SOFTSCAPE AREAS			
SECTIONS	SIZE	unit	% OF BLOCK SIZE
TREE CANOPY	441	m ²	25%
GARDEN BEDS GROUND	601	m ²	35%
GARDEN BEDS LOWER GROUND(PODIUM)	74	m ²	4%
GRAVEL MULCH+MULCH ONLY	48	m ²	3%
IRRIGATED GRASS	83	m ²	5%
TOTAL AREA OF SOFTSCAPE			47%
BLOCK SIZE	1732.8	m ²	100%

REV.	DESCRIPTION	DRAWN	APPROVED	DATE
A	FOR APPROVAL	HJ	NH	11DEC25
B	FOR APPROVAL	HJ	NH	03MAR26
C	FOR APPROVAL	HJ	NH	10MAR26
D	FOR APPROVAL	HJ	NH	19MAR26

HARRIS HOBBS LANDSCAPES Landscape Architect
 16 ROBE STREET DEAKIN ACT 3200
 p +61 2 6273 4661 e hh@hhl.com.au w www.hhl.com.au



SCALE @ A3
1:200

DATE
MARCH 2026

PROJECT
4 CANTERBURY CRES, FORREST

CLIENT
NTA CONSTRUCTIONS

DRAWING TITLE
LANDSCAPE PLAN - GROUND

STATUS
FOR APPROVAL

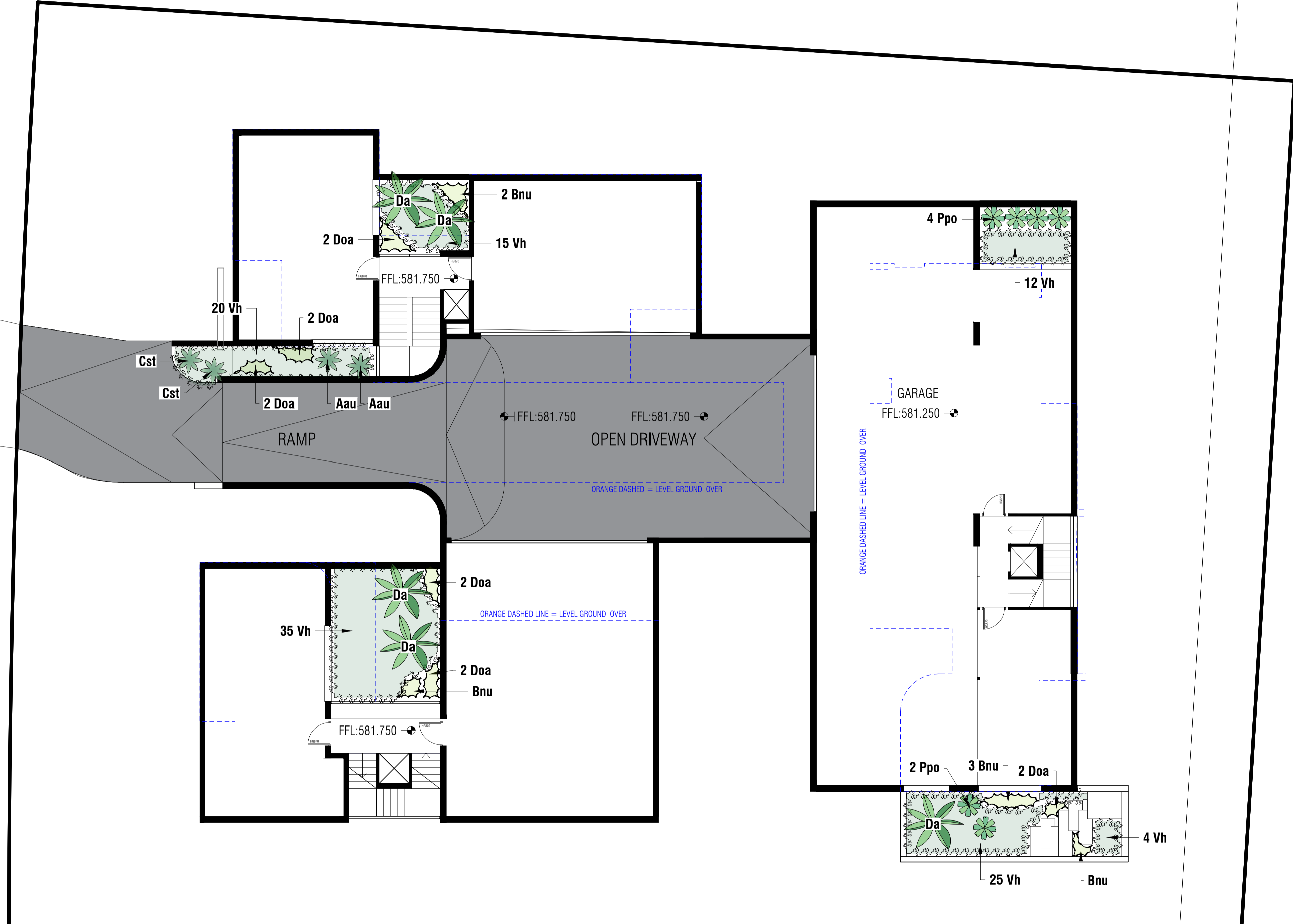
JOB
25184

REV
D

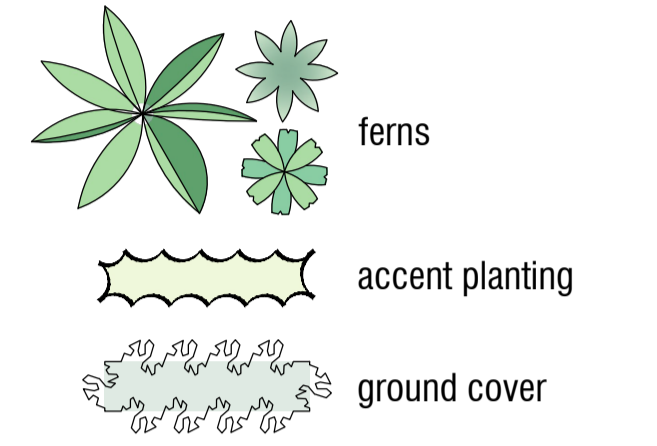
DWG
301

Harris Hobbs Landscapes acknowledges the Ngurnawal people, the traditional custodians of the land on which we live, work, rest and play.

CANTERBURY STREET



LEGEND



NOTE:
GARDEN AREAS IRRIGATED WITH DRIP IRRIGATION,
GRASS AREAS IRRIGATED WITH POP UP IRRIGATION

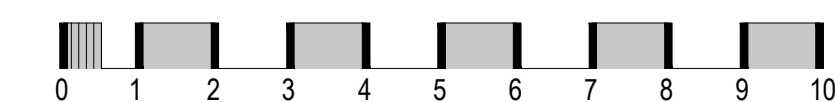
REFER 401 FOR PLANT SCHEDULE

AREAS

SOFTSCAPE AREAS			
SECTIONS	SIZE	unit	% OF BLOCK SIZE
TREE CANOPY	441	m ²	25%
GARDEN BEDS GROUND	601	m ²	35%
GARDEN BEDS LOWER GROUND(PODIUM)	74	m ²	4%
GRAVEL MULCH+MULCH ONLY	48	m ²	3%
IRRIGATED GRASS	83	m ²	5%
TOTAL AREA OF SOFTSCAPE			47%
BLOCK SIZE	1732.8	m ²	100%

REV.	DESCRIPTION	DRAWN	APPROVED	DATE
A	FOR APPROVAL	HJ	NH	11DEC25
B	FOR APPROVAL	HJ	NH	03MAR26
C	FOR APPROVAL	HJ	NH	19MAR26
.
.
.
.
.
.

HARRIS HOBBS Landscape Architect
LANDSCAPES
 16 ROBE STREET
 DEAKIN ACT 3200
 p +61 2 6273 4661
 e hh@hhl.com.au
 w www.hhl.com.au



SCALE @ A3
1:200

DATE
MARCH 2026
PROJECT
4 CANTERBURY CRES, FORREST

CLIENT
NTA CONSTRUCTIONS
DRAWING TITLE
LANDSCAPE PLAN - LOWER GROUND

Harris Hobbs Landscapes acknowledges the Ngunawal people, the traditional custodians of the land on which we live, work, rest and play.

STATUS FOR APPROVAL

JOB 25184
REV C
DWG 302

PLANT SCHEDULE

TREES			
SYM	NAME	SIZE	QTY
AIS	Acer palmatum 'Dissectum Inaba Shidare'	425mm	1
AJV	Acer japonicum 'Vitifolium'	75L	2
AROG	Acer rubrum 'October Glory'	75L	2
CKA	Cornus kousa 'Aurora'	75L	1
CSG	Cupressus sempervirens 'Glauca'	45L	2
LIFN	Lagerstroemia indica x fauriei 'Natchez'	75L	2
OE	Olea europaea	75L	7
PCOS	Prunus cerasifera 'Oakville Crimson Spire'	75L	2
TOS	Thuja occidentalis 'Smaragd'	75L	1

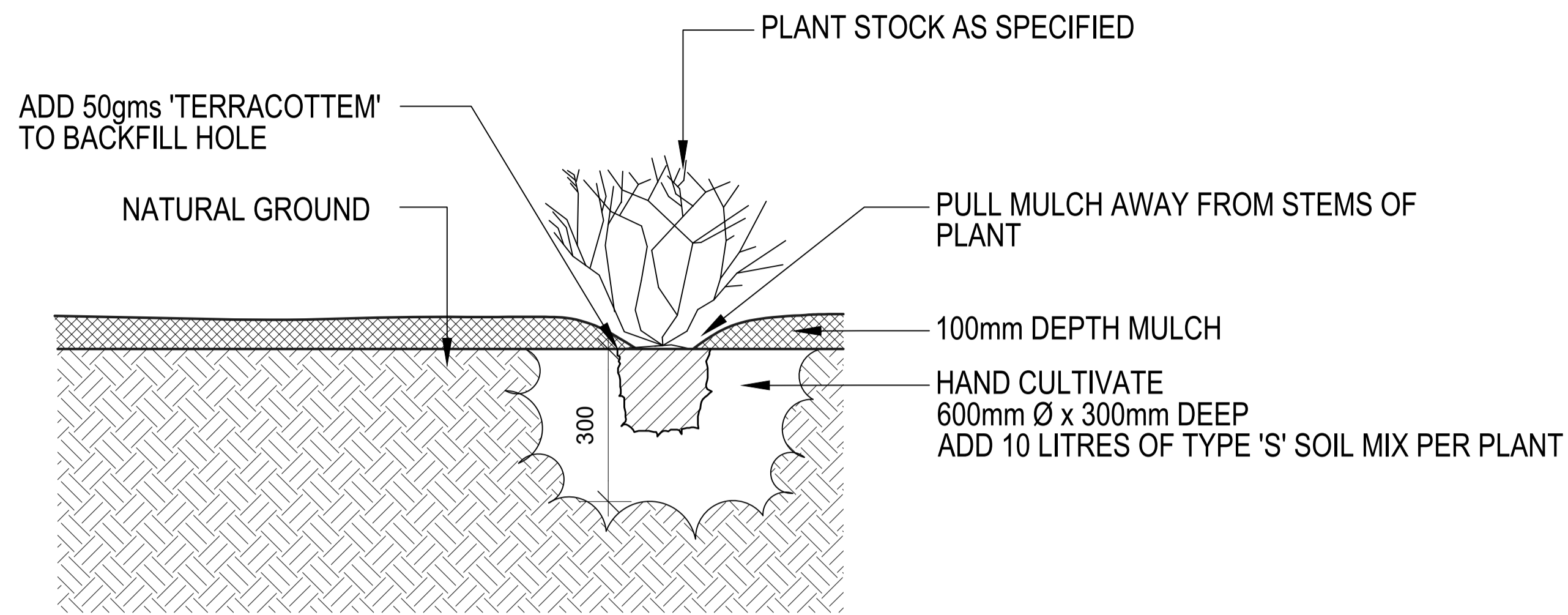
PODIUM			
SYM	NAME	SIZE	QTY
Aau	Asplenium australasicum	200mm	2
Bnu	Blechnum nudum	200mm	7
Cst	Cordyline stricta	200mm	2
Da	Dicksonia antarctica 1.8m trunk above ground level	200mm	5
Doa	Doodia aspera	200mm	12
Ppo	Polystichum polyblepharum	200mm	6
Vh	Viola hederacea	200mm	111

SHRUBS			
SYM	NAME	SIZE	QTY
Aam	Azalea 'Alba Magna'	200mm	61
Cja	Camellia japonica 'Ace of Hearts'	200mm	33
Csh	Camellia sasanqua 'Hiryu'	200mm	83
Css	Camellia sasanqua 'Setsugekka'	200mm	8
Ct	Choisya ternata	200mm	10
Gfl	Gardenia augusta 'Florida'	200mm	19
Ohs	Osmanthus delavayi 'Heaven Scent'	200mm	21
Rhp	Rhododendron 'Purple Splendour'	200mm	1
Rop	Rhaphiolepis indica 'Oriental Pearl'	200mm	6
Rwf	Rhododendron 'White Flare'	200mm	6

ACCENT PLANTING			
SYM	NAME	SIZE	QTY
Afl	Anigozanthos flavidus 'Landscape Lime'	140mm	7
Leg	Liriope giganteum 'Evergreen Giant'	140mm	30
Ndmb	Nandina domestica 'Moon Bay'	140mm	6
Opj	Ophiopogon japonicus	140mm	34
Opjn	Ophiopogon japonicus 'Nana'	140mm	318

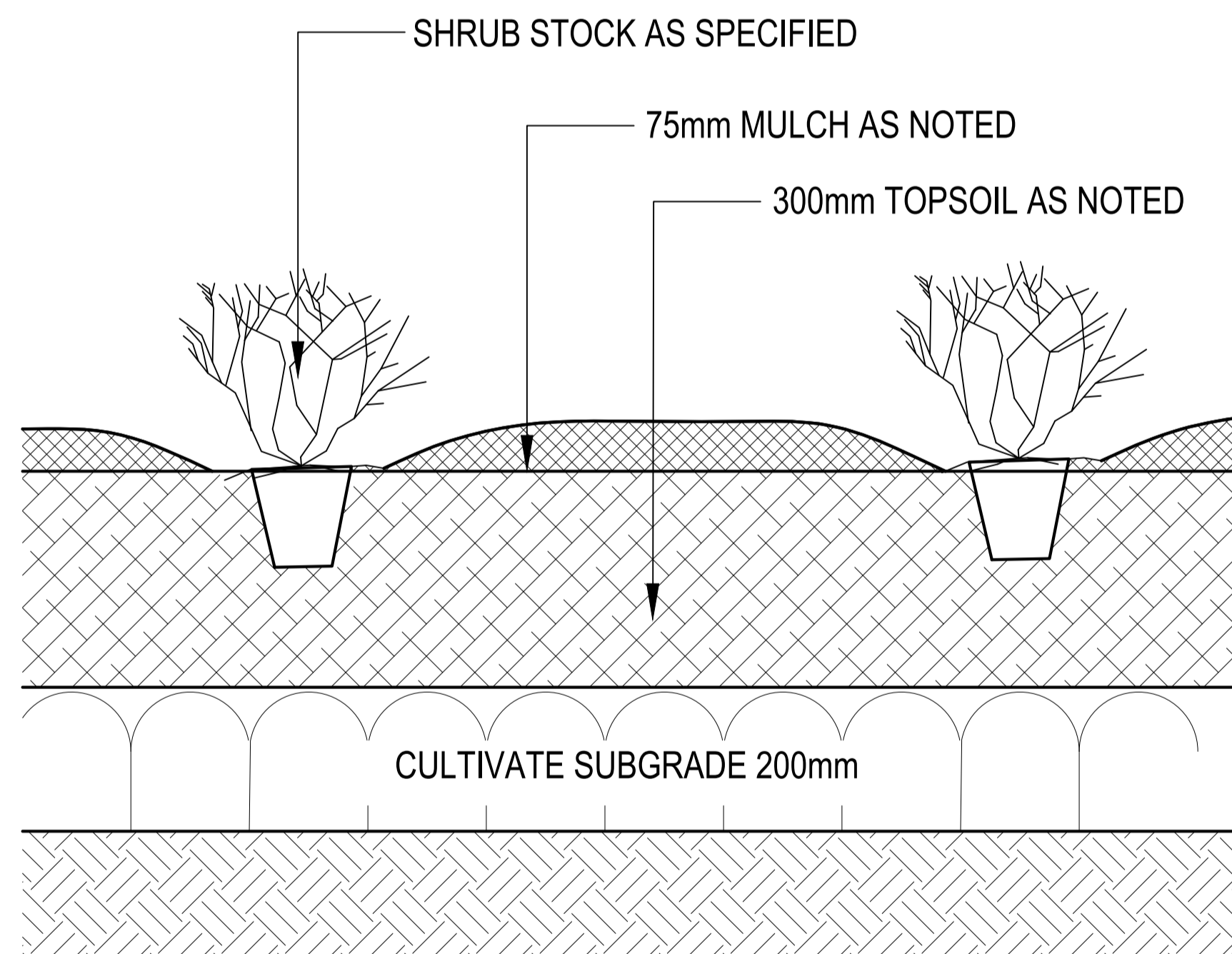
GROUND COVERS			
SYM	NAME	SIZE	QTY
Cma	Convolvulus mauretanicus	140mm	61
Dre	Dichondra repens	140mm	12
Dsf	Dichondra argentea 'Silver Falls'	140mm	50
Gra	Gardenia radicans	140mm	69
Rpr	Rosmarinus officinalis 'Prostratus'	140mm	63
Ta	Trachelospermum asiaticum	140mm	250
Tse	Thymus serpyllum	140mm	4
Vh	Viola hederacea	140mm	107

CLIMBERS			
SYM	NAME	SIZE	QTY
Fpu	Ficus pumila	200mm	20



'SPOT' PLANTING DETAIL

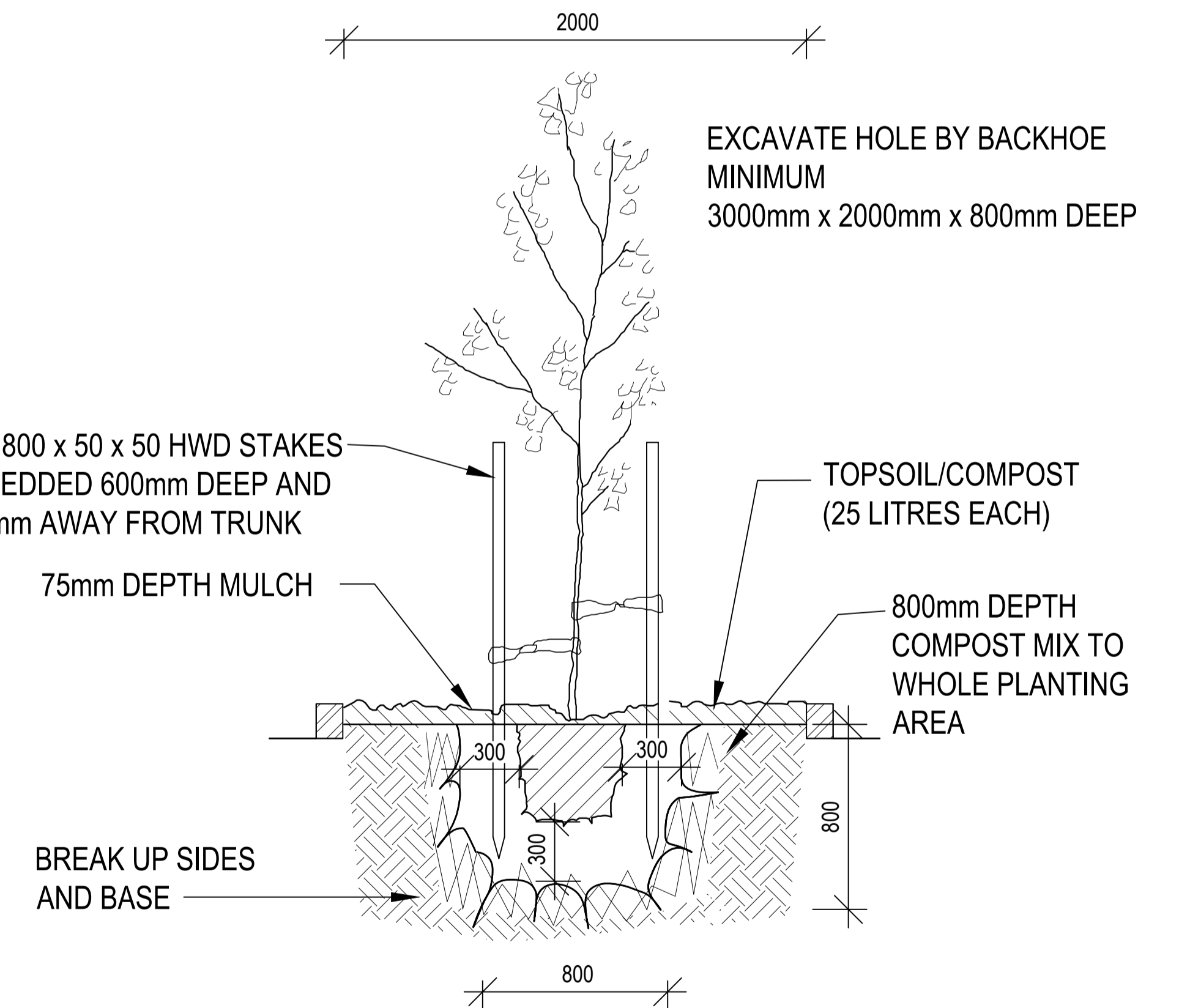
SCALE 1:20 @A3



SHRUB PLANTING DETAIL

SCALE 1:30 @ A3

WHERE SUPPORT IS NECESSARY, TIE TREE TO STAKE WITH TWO HESSIAN TIES AS LOW AS PRACTICAL



TREE PLANTING DETAIL

SCALE 1 : 80 @ A3

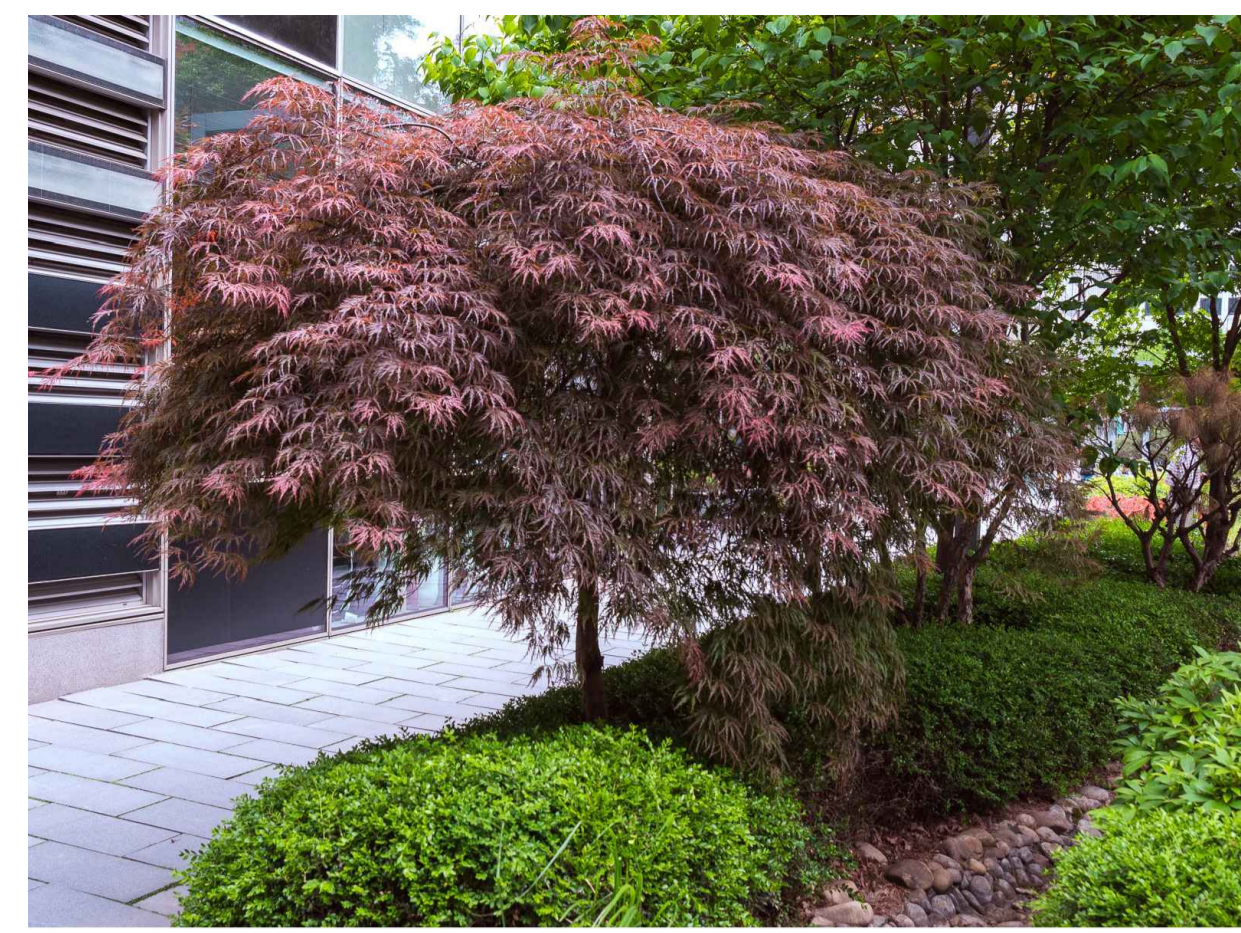
REV.	DESCRIPTION	DRAWN	APPROVED	DATE
A	FOR APPROVAL	HJ	NH	11DEC25
B	FOR APPROVAL	HJ	NH	03MAR26
C	FOR APPROVAL	HJ	NH	10MAR26
D	FOR APPROVAL	HJ	NH	19MAR26
-	-	-	-	-
-	-	-	-	-
-	-	-	-	-
-	-	-	-	-
-	-	-	-	-



Acer rubrum 'October Glory'



Acer japonicum 'Vitifolium'



Acer palmatum 'Dissectum Inaba Shidare'



Lagerstroemia natchez



Cornus Kousa Aurora



Olea europaea



Prunus cerasifera 'Oakville Crimson Spire'



Thuja occidentalis smaragd



Cupressus sempervirens glauca



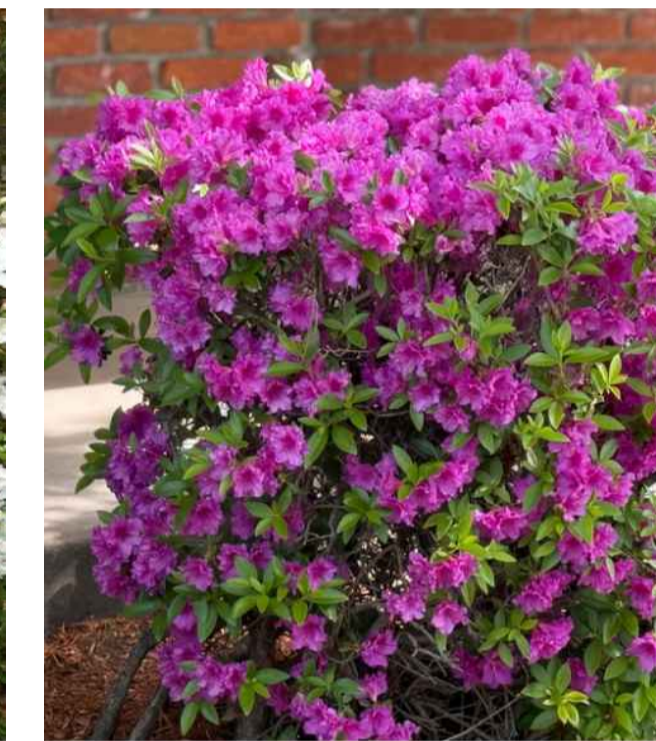
Dichondra argentea 'Silver Falls'



Osmanthus delavayi Heaven Scent



Azalea 'Alba Magna'



Rhododendron 'Purple Splendour'



Rhododendron 'White Pearl'



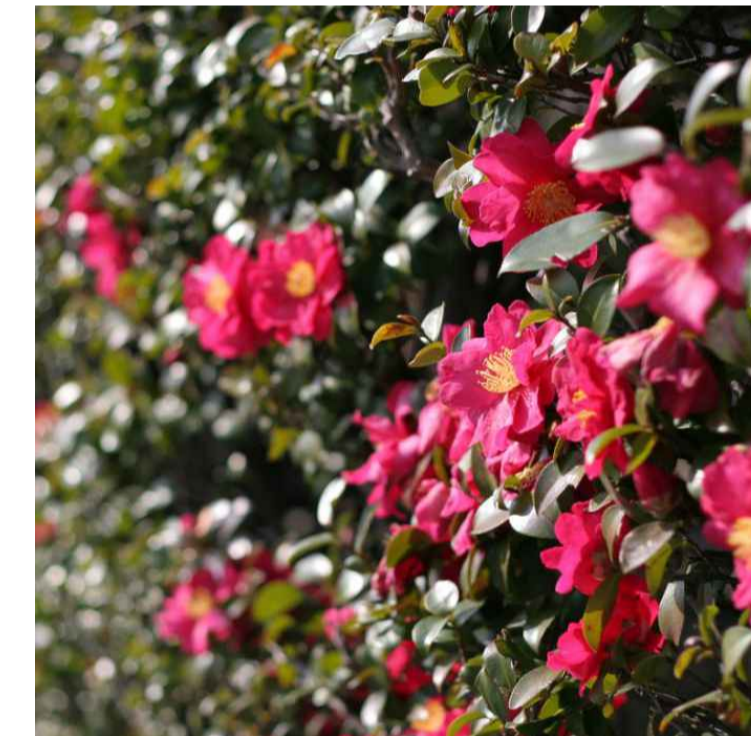
Dichondra repens



Ficus pumila



Camellia sasanqua 'Setsugekka'



Camellia Sasanqua Hiryu



Camellia japonica 'Ace of Hearts'



Choisya ternata



Gardenia augusta 'Florida'



Dicksonia antarctica



Doodia aspera



Viola hederacea



Blechnum



Asplenium australasicum



Polystichum polyblepharum

REV.	DESCRIPTION	DRAWN	APPROVED	DATE
A	FOR REVIEW	HJ	NH	04DEC25
B	FOR APPROVAL	HJ	NH	11DEC25
C	FOR APPROVAL	HJ	NH	03MAR26
-	-	-	-	-
-	-	-	-	-
-	-	-	-	-
-	-	-	-	-
-	-	-	-	-
-	-	-	-	-

HARRIS HOBBS Landscape Architect
LANDSCAPES
 16 ROBE STREET
 DEAKIN ACT 2600
 p +61 2 6273 4661
 e hh@hhl.com.au
 www.hhl.com.au

Harris Hobbs Landscapes acknowledges the Ngurnawal people, the traditional custodians of the land on which we live, work, rest and play.

SCALE @ A3
 NTS

DATE
 MARCH 2026

PROJECT
 4 CANTERBURY CRES, FORREST

CLIENT
 NTA CONSTRUCTIONS

DRAWING TITLE
 PLANT PHOTOS

STATUS
 FOR APPROVAL

JOB
 25184

REV
 C

DWG
 501