

PROPOSED MULTI UNIT DEVELOPMENT

PROJECT DEVELOPER

NJEGOSA POPOVICH

PROJECT BUILDER

NTA

PROJECT NUMBER

25-1010

SITE DETAILS

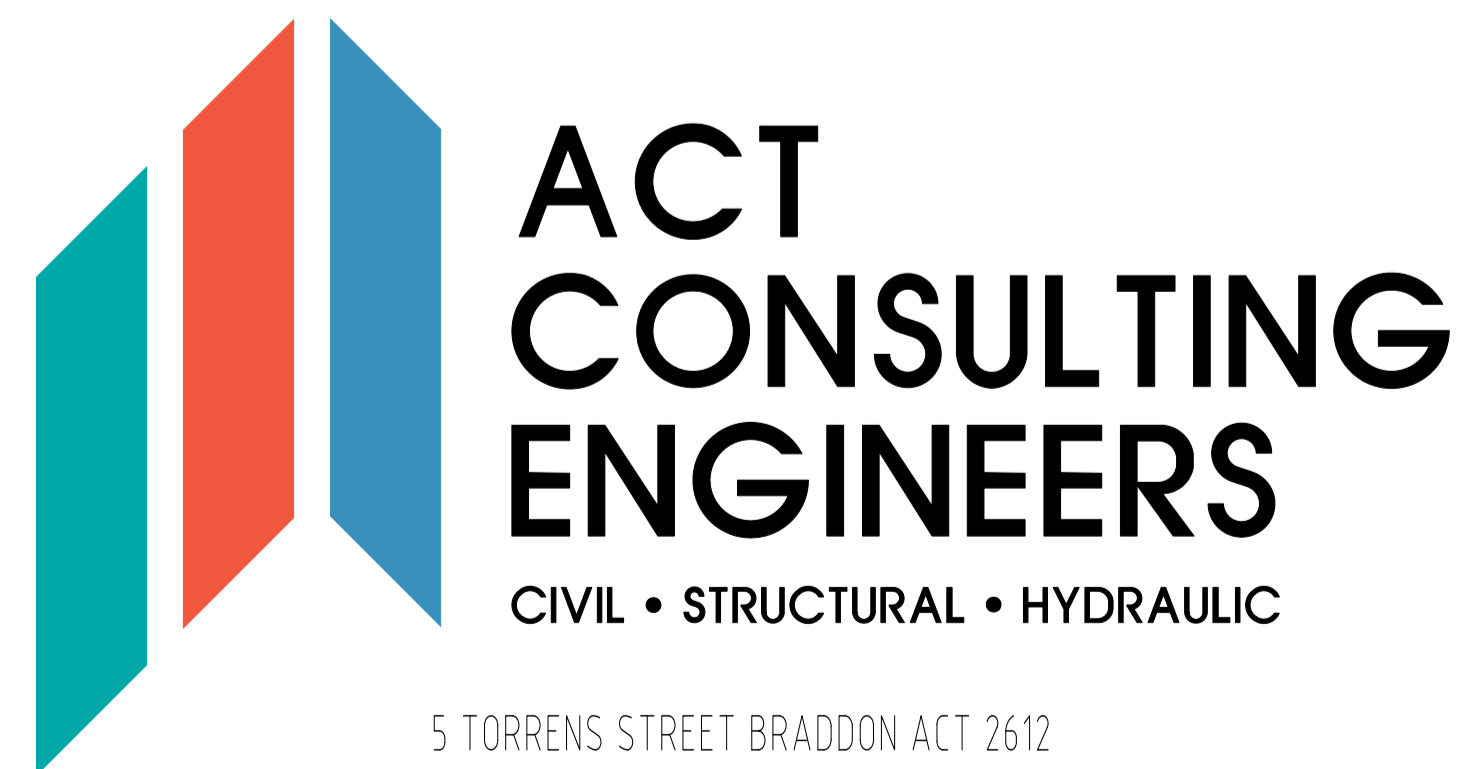
BLOCK 11 SECTION 3 DEAKIN

SITE ADDRESS

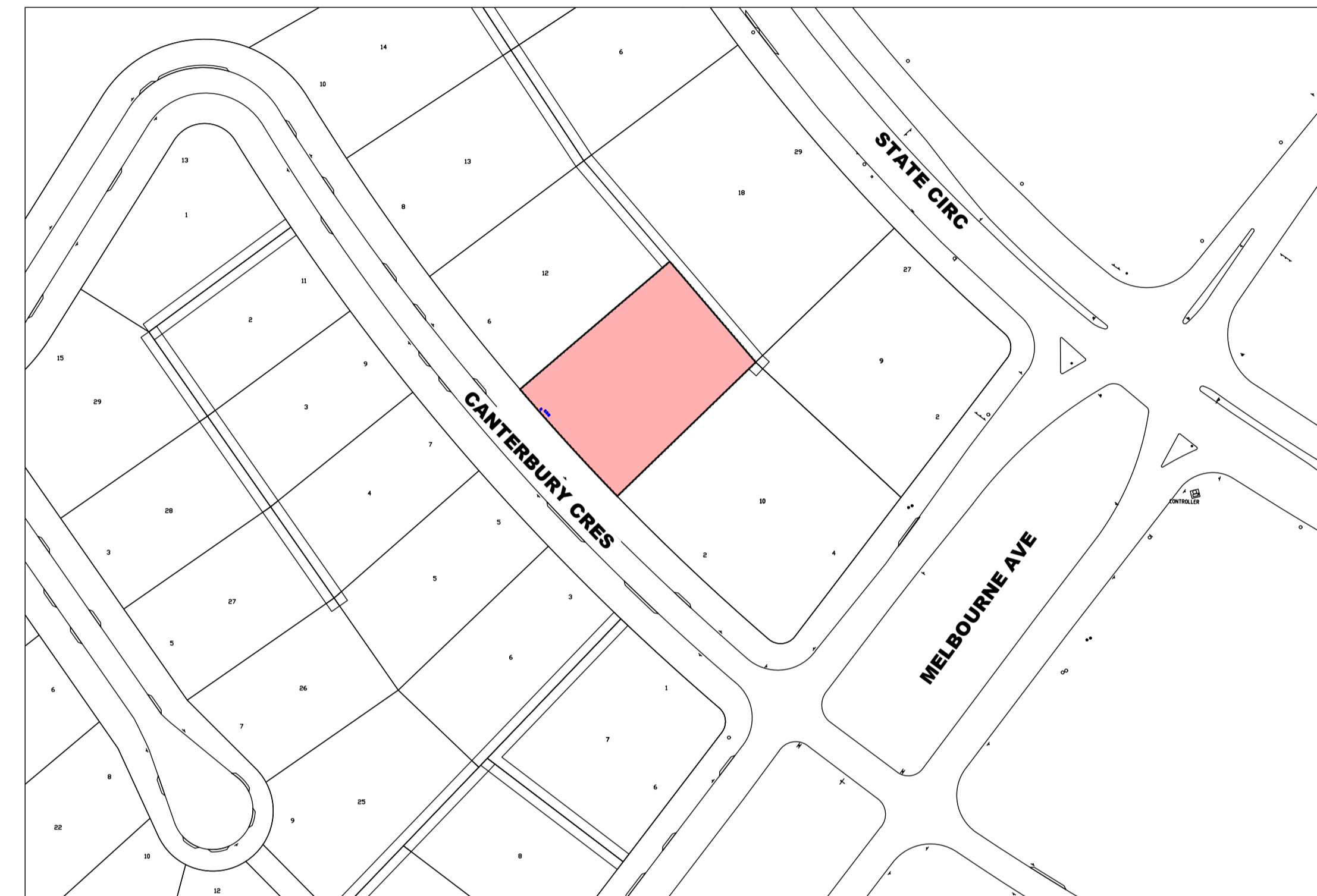
4 CANTERBURY CRESCENT

PROJECT STAGE

DEVELOPMENT APPLICATION

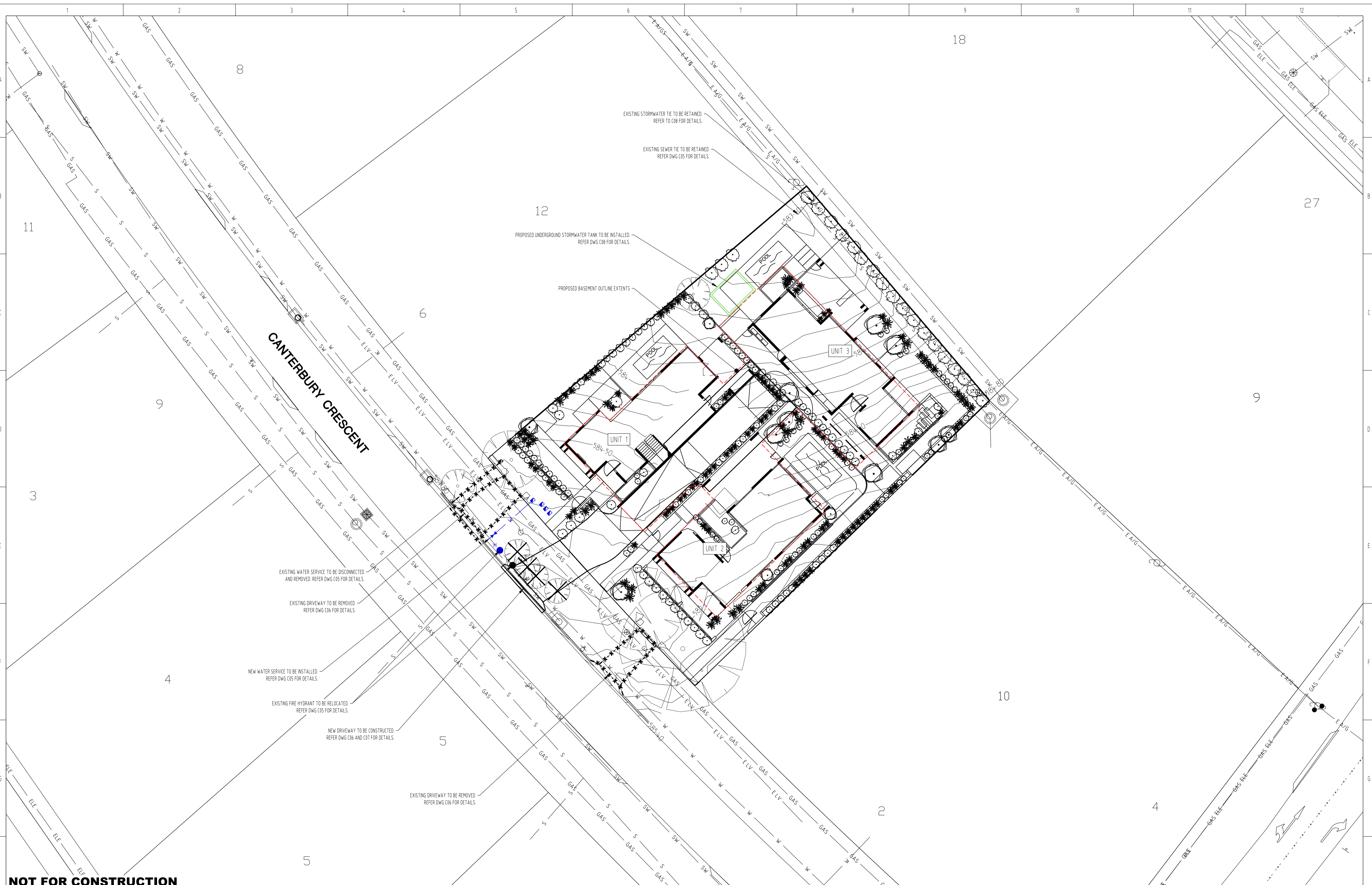


PROJECT LOCATION



DRAWING INDEX

DRAWING NUMBER	DRAWING TITLE
C01	GENERAL ARRANGEMENTS PLAN
C02	GENERAL CONSTRUCTION NOTES AND DETAILS
C03	LANDSCAPE MANAGEMENT & PROTECTION PLAN
C04-01	SEDIMENT AND EROSION CONTROL NOTES 1
C04-02	SEDIMENT AND EROSION CONTROL NOTES 2
C04-03	SEDIMENT AND EROSION CONTROL PLAN
C05	EXTERNAL SERVICES PLAN
C06	CIVIL WORKS PLAN
C07	CIVIL WORKS DETAILS
C08	STORMWATER MANAGEMENT PLAN
C09	VEHICLE TURNING PLAN
C09-01	VEHICLE TURNING PLAN
C10	WASTE COLLECTION PLAN
C11	WASTE COLLECTION DETAILS



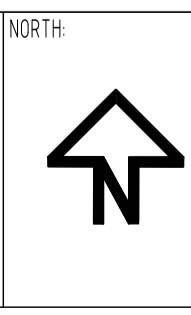
NOT FOR CONSTRUCTION

ACT CONSULTING ENGINEERS
 CIVIL • STRUCTURAL • HYDRAULIC

5 TORRENS STREET BRADDOCK ACT 2612
 WWW.ACTCE.COM.AU - OFFICE@ACTCE.COM.AU - 021 4103 8611

Scale: 1:200 @A1, 1:400 @A3

Use written dimensions only. This drawing, and the information contained within, is copyright to ACT Consulting Engineers Pty Ltd. Using or copying this drawing, in part or whole, without the prior consent of ACT Consulting Engineers Pty Ltd may result in legal action. © ACT Consulting Engineers Pty Ltd



REV	REVISION	DATE	DESIGNED	DRAWN	APPROVED	REV	REVISION	DATE	DESIGNED	DRAWN	APPROVED	DEVELOPER
A	FOR DEVELOPMENT APPLICATION	18.03.2026	RI	RI	LK	F						NJEGOSA POPOVICH
B						G						
C						H						
D						I						
E						J						

DEVELOPER: NJEGOSA POPOVICH
 BUILDER: NTA

PROJECT: PROPOSED MULTI UNIT DEVELOPMENT

SITE ADDRESS: BLOCK 11 SECTION 3 DEAKIN
 4 CANTERBURY CRESCENT
 DEAKIN

SCALE: AS SHOWN	DATE: 18.03.2026	DRAWING No: C01
PROJECT No: 25-1010	REVISION: A	
DRAWING TITLE: GENERAL ARRANGEMENTS PLAN		

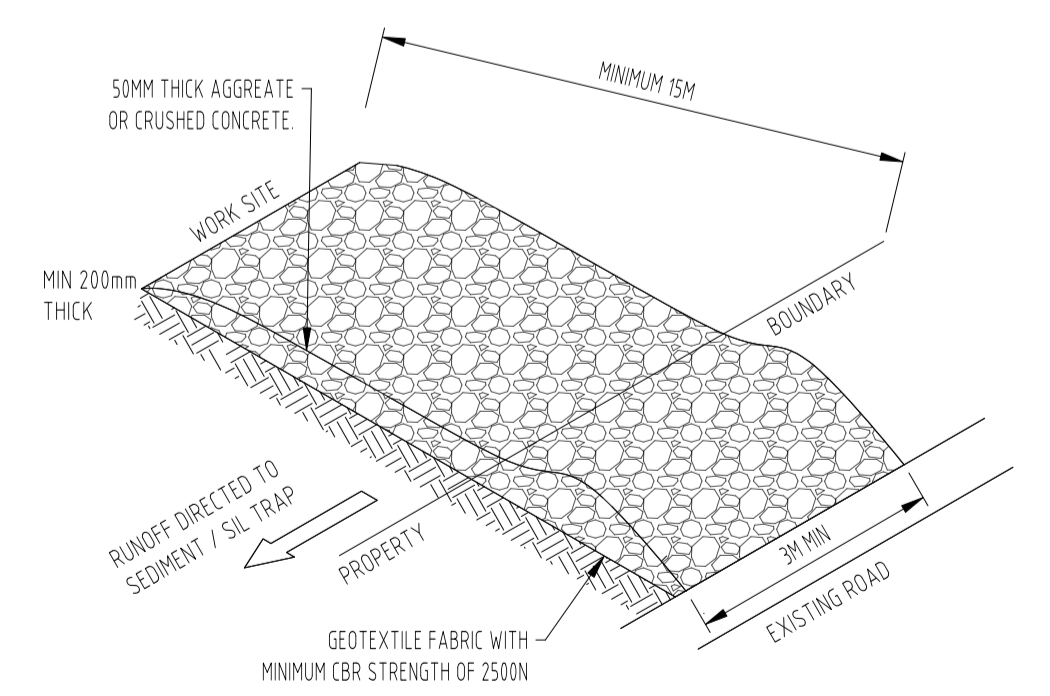
LANDSCAPE MANAGEMENT AND PROTECTION NOTES

1. **General**
 1.1. THESE NOTES MUST BE READ IN CONJUNCTION WITH THE REQUIREMENTS OUTLINED IN TCCS REFERENCE DOCUMENT 04 – LANDSCAPE MANAGEMENT AND PROTECTION PLANS.
 1.2. IT IS THE RESPONSIBILITY OF THE DEVELOPER TO ENSURE THAT ALL TERRITORY ASSETS ARE PROTECTED FROM DAMAGE.
 1.3. NO WORKS OTHER THAN THOSE IDENTIFIED ON THE APPROVED LMP MUST BE TAKEN PLACE WITHIN THE TREE PROTECTION ZONE (TPZ) OF AN EXISTING TREE. NO CONSTRUCTION ACTIVITIES SUCH AS STORAGE, PARKING, STOCKPILING, SITE SHEDS, CONSTRUCTION ACCESS, WASHDOWN, EXCAVATION, ETC. ARE ACCEPTED WITHOUT APPROVAL.
 1.4. PRIOR TO CONSTRUCTION ALL PROTECTION MEASURES INDICATED ON THE APPROVED LMP MUST BE IMPLEMENTED. THE PROJECT TEAM MUST NOTIFY TCCS URBAN TREESCAPES IN WRITING ONCE THE PROTECTION MEASURES HAVE BEEN INSTALLED (VIA TCCS_CPUTDDCOORD@ACT.GOV.AU).
 2. **SITE ACCESS – ALSO REFER TO VEHICLE ACCESS WITHIN THE TREE PROTECTION ZONE**
 THIS SECTION OF NOTES IS APPLICABLE FOR ALL DEVELOPMENTS.
 2.1. SITE ACCESS MUST BE STRICTLY THROUGH THE ACCESS POINTS IDENTIFIED ON THIS PLAN. ACCESS THROUGH UNLEASED LAND THAT IS NOT IDENTIFIED ON THE APPROVED LMP IS STRICTLY PROHIBITED.
 3. **STORAGE OF MATERIALS**
 THIS SECTION OF NOTES IS APPLICABLE FOR ALL DEVELOPMENTS.
 3.1. THE STORAGE OF CONSTRUCTION MATERIALS AND THE PARKING OF VEHICLES OR EQUIPMENT ON VERGES OR ADJACENT PUBLIC OPEN SPACES IS NOT PERMITTED WITHOUT PRIOR APPROVAL FROM TCCS.
 3.1.1. ONLY STORAGE AND PARKING LOCATIONS ON UNLEASED LAND IDENTIFIED ON THIS LMP ARE APPROVED.
 4. **SITE ACCOMMODATION**
 THIS SECTION OF NOTES IS APPLICABLE FOR ALL DEVELOPMENTS.
 4.1. SITE SHEDS, SITE AMENITIES, STORAGE SHEDS, SKIPS, BILLBOARDS, OR CONTAINERS ARE STRICTLY PROHIBITED FROM BEING PLACED ON UNLEASED LAND UNLESS IDENTIFIED ON THE APPROVED LMP, AND PUBLIC UNLEASED LAND PERMIT.
 4.1.1. ONLY SITE AMENITIES ON UNLEASED LAND IDENTIFIED ON THIS LMP ARE APPROVED.
 5. **FENCING**
 THIS SECTION IS APPLICABLE FOR ALL DEVELOPMENT SITES ADJACENT TO UNLEASED LAND. PROTECTION FENCING MUST BE IDENTIFIED ON THE LMP TO PROTECT TERRITORY ASSETS ADJACENT THE DEVELOPMENT SITE.
 5.1. PROTECTION FENCING
 5.1.1. FENCING MUST BE ERECTED BEFORE COMMENCEMENT OF ANY CONSTRUCTION ACTIVITIES ON SITE. THIS INCLUDES BUT IS NOT LIMITED TO STARTING OF DEMOLITION WORKS, DELIVERY OF MACHINERY OR MATERIALS, STOCKPILING, STORAGE, ETC.
 5.1.2. FENCING MUST BE ERECTED IN THE LOCATION, ALIGNMENTS AND MATERIAL INDICATED ON THE APPROVED LMP AND MUST STOP ACCESS THROUGHOUT CONSTRUCTION.
 5.1.3. FENCING MUST REMAIN IN PLACE FOR THE ENTIRETY OF THE PROJECT DURATION, AND MAINTAINED IN GOOD, SAFE WORKING ORDER UNTIL OPERATIONAL ACCEPTANCE (OAI) IS GRANTED. REMOVAL BEFORE OAI IS GRANTED MUST BE APPROVED BY TCCS IN WRITING.
 5.1.4. FENCING MUST BE 1800 MM RIGID MESH TEMPORARY FENCE PANELS SUPPORTED BY STEEL POSTS AND CONCRETE BASES. SUPPORT POSTS DRIVEN INTO THE GROUND ARE STRICTLY PROHIBITED.
 5.1.5. ALL CONNECTING FIXTURES/HARDWARE MUST BE SECURELY MOUNTED SO FENCING CANNOT BE DISMANTLED AND REMOVED BY THE PUBLIC.
 5.1.6. THE USE OF ALTERNATIVE FENCING MATERIALS MUST BE DISCUSSED WITH, AND APPROVED BY, TCCS.
 5.1.7. FENCING MUST BE SETBACK FROM FOOTPATHS AND CIVIL INFRASTRUCTURE AS PER TCCS REFERENCE DOCUMENT 04 – LANDSCAPE MANAGEMENT AND PROTECTION PLANS REQUIREMENTS, UNLESS OTHERWISE NOTED ON THE APPROVED LMP.
 6. **CANOPY PROTECTION**
 THIS SECTION OF NOTES IS APPLICABLE WHERE THE EXISTING CANOPY OF A TREE ON UNLEASED LAND IS LIKELY TO BE IMPACTED BY CONSTRUCTION WORKS. THE FOLLOWING CANOPY PROTECTION REQUIREMENTS ARE MANDATORY.
 6.1. THE DEVELOPER IS RESPONSIBLE TO PREVENT DAMAGE TO TREE CANOPIES AND PROTECT ALL EXISTING TREE CANOPIES FROM CONSTRUCTION ACTIVITIES.
 6.2. PRUNING OF EXISTING CANOPIES IS STRICTLY PROHIBITED UNLESS IDENTIFIED ON THE APPROVED LMP.
 6.3. WHERE ADDITIONAL CANOPY IMPACTS TO THE APPROVED LMP ARE IDENTIFIED, THE FOLLOWING REQUIREMENTS ARE MANDATORY.
 6.3.1. IDENTIFY ANY PRUNING REQUIREMENTS BY NOTIONALLY INDICATING ON A PHOTOGRAPH WHERE THE LIMBS MAY NEED TO BE PRUNED OR TIED BACK AND SUBMIT THIS TO TCCS URBAN TREESCAPES.
 6.3.2. WHERE DIRECTED BY TCCS, A SUITABLY QUALIFIED ARBORIST WITH A MINIMUM CERTIFICATE 5 QUALIFICATION MUST BE ENGAGED TO IDENTIFY THE CANOPY IMPACTS AND PROPOSE THE PREFERRED THE BACK OF LIMBS OR EXTENT OF PRUNING REQUIRED.
 6.3.3. WHERE ROOT PRUNING IS IDENTIFIED, REFER TO TREE ROOT PROTECTION OF THESE NOTES.
 6.4. BRANCH PRUNING OF TREES ON UNLEASED LAND
 THIS SECTION OF NOTES IS APPLICABLE WHEREVER PRUNING IS REQUIRED TO TREES ON UNLEASED LAND. ALL PRUNING ACTIVITIES MUST BE INDICATED ON THE APPROVED LMP.
 6.4.1. ALL PRUNING AND TYING OF BRANCHES MUST BE UNDERTAKEN BY SUITABLY QUALIFIED ARBORISTS WITH A MINIMUM CERTIFICATE 3 QUALIFICATION, AND AS PER BEST PRACTICES AS DEFINED IN AS 4373.
 6.4.2. WHERE PRACTICAL BRANCHES SHOULD BE TIED BACK, CLEAR OF THE WORK, AND PRUNING SHOULD ONLY BE USED AS LAST RESORT.
 6.4.3. A PRUNING REPORT FROM THE ARBORIST MUST BE COMPLETED AND ISSUED TO TCCS URBAN TREESCAPES WITH THE LMP AND LETTER OF DESIGN REVIEW (LDR) FOR APPROVAL BEFORE PRUNING ACTIVITIES CAN COMMENCE.
 6.4.4. ONCE THE PRUNING REPORT HAS BEEN ENDORSED BY TCCS URBAN TREESCAPES, THE PROJECT REPRESENTATIVE MUST NOTIFY TCCS URBAN TREESCAPES OF WHEN THE PRUNING IS PLANNED TO TAKE PLACE (VIA TCCS_CPUTDDCOORD@ACT.GOV.AU).
 7. **TRUNK/BRANCH PROTECTION**
 THIS SECTION IS APPLICABLE WHERE WORK IS REQUIRED WITHIN THE TREE PROTECTION ZONE (TPZ) OF AN EXISTING TREE. TRUNK PROTECTION MUST BE INSTALLED WHEN WORK IS REQUIRED WITHIN THE TPZ OF A TREE.
 7.1. PROTECTION BATTENS MUST BE PUT IN PLACE BEFORE COMMENCING THE WORKS AND MAINTAINED IN GOOD CONDITION THROUGHOUT THE WORK PERIOD. PROTECTION BATTENS CAN ONLY BE REMOVED AT THE COMPLETION OF THE WORKS.
 7.2. TRUNK PROTECTION (AS PER CURRENT AS 4970 REQUIREMENTS)
 7.2.1. LOOSELY WRAP THE TRUNK REQUIRING PROTECTION IN A THICK LAYER OF HESSIAN.
 7.2.2. USE MINIMUM 2 M LENGTHS OF TIMBER FOR THE TRUNK PROTECTION AND INSTALL AT BASE OF TRUNK FOR FULL CIRCUMFERENCE OF TREE. SPACE BATTENS SO GAPS BETWEEN BATTENS ARE NO GREATER THAN 20 MM. BATTENS MUST BE UNTREATED TIMBER, FREE OF NAILS, SCREWS OR BOLTS.
 7.2.3. LASH BATTENS TO TREE USING STRAPS, ROPE OR HESSIAN WEBBING ENSURING THE BATTENS ARE SECURE AGAINST THE TREE, BUT NOT TOO TIGHT ON THE TRUNK. BATTENS MUST BE LASHED AT THE TOP, BOTTOM AND MIDDLE AS A MINIMUM.
 7.3. BRANCH PROTECTION (AS PER CURRENT AS 4970 REQUIREMENTS)
 7.3.1. WHERE LOW HANGING BRANCHES GREATER THAN 100 MM IN DIAMETER WILL BE DAMAGED BY THE WORKS, THEY WILL REQUIRE ADDITIONAL PROTECTION.
 7.3.2. LOOSELY WRAP THE BRANCHES REQUIRING PROTECTION IN A THICK LAYER OF HESSIAN.
 7.3.3. USE TIMBER CUT TO LENGTH TO SUIT THE BRANCH REQUIRING PROTECTION AND INSTALL TO FULL CIRCUMFERENCE OF BRANCH. SPACE BATTENS SO GAPS BETWEEN BATTENS ARE NO GREATER THAN 20 MM. BATTENS MUST BE

UNTREATED TIMBER, FREE OF NAILS, SCREWS OR BOLTS.
 7.3.4. LASH BATTENS TO TREE USING STRAPS, ROPE OR HESSIAN WEBBING ENSURING THE BATTENS ARE SECURE AGAINST THE TREE, BUT NOT TOO TIGHT ON THE TRUNK. BATTENS MUST BE LASHED AT THE TOP, BOTTOM AND MIDDLE AS A MINIMUM.
 8. **DEMOLITION WITHIN THE TREE PROTECTION ZONE – ALSO REFER TO CANOPY PROTECTION, TRUNK/BRANCH PROTECTION AND ROOT PROTECTION NOTES**
 THIS SECTION OF NOTES IS APPLICABLE WHERE EXISTING INFRASTRUCTURE IS REQUIRED TO BE DEMOLISHED WITHIN THE TREE PROTECTION ZONE (TPZ) OF AN EXISTING TREE.
 8.1. ANY DEMOLITION WORK WITHIN TPZ AREAS, THAT IS NOT INDICATED ON THE ENDORSED PLAN, IS NOT APPROVED BY TCCS URBAN TREESCAPES.
 8.2. IF DEMOLITION WORKS ADDITIONAL TO THE APPROVAL ARE REQUIRED, AN UPDATED LMP MUST BE PROVIDED TO TCCS FOR RE-ENDORSEMENT BEFORE COMMENCING THE WORKS.
 8.3. DEMOLITION OF OLD PAVEMENT WITHIN TPZ
 8.3.1. WHERE AN EXISTING DRIVEWAY IS TO BE USED FOR CONSTRUCTION ACCESS, AND IS PROPOSED TO BE REPLACED, ALL CONSTRUCTION WORK IS TO BE COMPLETED PRIOR TO REMOVAL OF THE DRIVEWAY. THIS IS TO ENSURE THE TREE ROOTS DO NOT DRY OUT BEFORE WORK IS COMPLETED.
 8.3.2. TO MINIMISE ROOT DAMAGE, THE REMOVAL OF THE EXISTING PAVEMENT SHALL BE CAREFULLY DONE IN SMALL, STAGED SECTIONS AND ONLY TO THE DEPTH OF THE EXISTING CONSTRUCTED PAVEMENT PROFILE (SURFACE LAYER AND BASE LAYER), SO AS TO NOT CAUSE DAMAGE TO TREE ROOTS.
 8.3.3. NO VEHICLES OR MACHINERY ARE ALLOWED WITHIN THE TPZ, AND VEHICLES AND MACHINERY MUST ALWAYS STAY OUTSIDE OF THIS ZONE DURING THE REMOVAL OF THE OLD PAVEMENT MATERIAL.
 9. **EXCAVATION WITHIN THE TREE PROTECTION ZONE – ALSO REFER TO DEMOLITION WITHIN THE TREE PROTECTION ZONE AND TREE ROOT PROTECTION**
 THIS SECTION OF NOTES IS APPLICABLE WHERE EXCAVATION WITHIN THE TREE PROTECTION ZONE (TPZ) OF A TREE ON UNLEASED LAND IS APPROVED BY TCCS. ALL EXCAVATIONS WITHIN THE TPZ MUST BE SHOWN ON THE LMP, OTHERWISE IF EXCAVATION IS NOT SHOWN ON THE LMP THE IMPACT ON THE TREES CAUSED BY THE EXCAVATION IS CONSIDERED UNAPPROVED.
 9.1. THE TERM 'EXCAVATION' IN RELATION TO THIS SECTION MEANS ANY EARTHWORKS GREATER THAN 50 MM IN DEPTH FROM THE EXISTING SURFACE LEVEL, INCLUDING TRENCHING FOR SERVICES.
 9.2. ONLY THE EXCAVATIONS IDENTIFIED ON THIS LMP ARE APPROVED WITHIN THE TPZ.
 9.3. EXCAVATION WITHIN THE STRUCTURAL ROOT ZONE (SRZ) OF A TREE AS OUTLINED IN AS 4970, IS STRICTLY PROHIBITED.
 9.4. EXCAVATION WITHIN THE TPZ MUST BE EXECUTED USING EITHER UNDER-BORING, HYDRO-EXCAVATION OR HAND DIGGING TECHNIQUES, UNLESS AN ALTERNATIVE METHOD HAS BEEN DOCUMENTED AND ENDORSED BY TCCS URBAN TREESCAPES.
 9.5. WHERE IDENTIFIED BY TCCS URBAN TREESCAPES, EXCAVATION TO EXPOSE ROOTS MAY BE REQUIRED TO BE UNDERTAKEN BY LOW-PRESSURE HYDRO-EXCAVATION USING A FAN SHAPED NOZZLE HEAD THAT IS KEPT 150MM FROM SOIL PROFILE.
 9.6. A SUITABLY QUALIFIED ARBORIST MUST BE PRESENT WHEN EXCAVATIONS THROUGH THE TPZ OF A TREE ARE BEING EXECUTED.
 9.7. NO ROOTS GREATER THAN 30 MM IN DIAMETER ARE TO BE CUT, REFER TO TREE ROOT PROTECTION OF THESE NOTES.
 9.8. IF ADDITIONAL EXCAVATION WITHIN THE TPZ IS IDENTIFIED TO BE REQUIRED THROUGH THE CONSTRUCTION PERIOD, THE DEVELOPER/CONTRACTOR MUST SEEK APPROVAL FOR THIS EXCAVATION FROM TCCS BEFORE STARTING THE WORKS.
 10. **TREE ROOT PROTECTION – ALSO REFER TO DEMOLITION WITHIN THE TREE PROTECTION ZONE AND EXCAVATION WITHIN THE TREE PROTECTION ZONE**
 THIS SECTION IS APPLICABLE WHERE EXISTING TREE ROOTS ARE FOUND IN EXCAVATION LOCATIONS.
 10.1. MOST TREE ROOTS ARE FOUND WITHIN THE TOP 300 MM DEPTH OF SOIL.
 10.2. MAINTAIN THE GOOD HEALTH OF THE TREES THAT HAVE HAD DISTURBANCE IN THEIR ROOT ZONE BY CONTINUAL WATERING, AT NO TIME SHALL THE DISTURBED AREA BE ALLOWED TO DRY OUT TO THE DETRIMENT OF THE TREE HEALTH.
 10.3. WHERE ROOT DAMAGE HAS BEEN CAUSED, THE DEVELOPER MUST SEEK ADVICE FROM AN ARBORIST ABOUT MEASURES TO MINIMISE THE IMPACT OF THE DAMAGE ON THE TREE HEALTH (I.E. ADDITIONAL WATERING, FERTILISING, ETC.).
 10.4. ALL EXPOSED ROOTS MUST BE BACKFILLED/COVERED WITH SOIL IMMEDIATELY.
 10.4.1. BACKFILL AROUND TREE ROOTS MUST BE IN ACCORDANCE WITH AS 4970 TO MATCH FINISHED LEVELS. WHERE SITE SOIL IS UNABLE TO BE RE-USED, SOIL MEETING MTS 09A TOPSOIL SOIL REQUIREMENTS MUST BE USED UNLESS OTHERWISE APPROVED.
 10.4.2. WHERE ROOTS CANNOT BE COVERED IMMEDIATELY THE ROOTS MUST BE PROTECTED FROM DESICCATION BY LIGHTLY WATERING OR COVERING WITH HESSIAN WHICH MUST BE KEPT MOIST.
 10.4.3. WHERE PROPOSED WORKS COME IN CONTACT WITH TREE ROOTS, A LAYER OF GEOTEXTILE FABRIC MUST BE PLACED OVER THE ROOTS AND UNDERNEATH ANY NEW PAVEMENT OR INFRASTRUCTURE (DRIVEWAYS AND FOOTPATHS FOR EXAMPLE).
 10.5. ROOT PRUNING
 10.5.1. CUTTING OF ROOTS SHOULD BE THE LAST RESORT AND ONLY UNDERTAKEN IF NO OTHER OPTION IS AVAILABLE.
 10.5.2. ROOTS GREATER THAN 30 MM IN DIAMETER MUST NOT BE CUT. IF ROOTS GREATER THAN 30 MM IN DIAMETER ARE REQUIRED TO BE CUT, APPROVAL FROM TCCS URBAN TREESCAPES MUST BE SOUGHT BEFORE CUTTING.
 10.5.3. ALL ROOTS SHALL BE CUT WITH SUITABLE PROFESSIONAL EQUIPMENT AND BY SUITABLY QUALIFIED ARBORISTS WITH A MINIMUM CERTIFICATE 3 QUALIFICATION.
 10.5.4. ANY ROOTS THAT ARE REQUIRED TO BE REMOVED MUST BE CUT CLEANLY WITH CLEAN AND SHARP ARBORIST TOOLS. TREE ROOTS ARE NOT TO BE RIPPED, TORN, OR PULLED AWAY FROM THE ROOT MASS.
 11. **VEHICLE ACCESS WITHIN THE TREE PROTECTION ZONE**
 THIS SECTION OF NOTES IS APPLICABLE WHERE ANY VEHICLE MOVEMENT IS REQUIRED THROUGH THE TREE PROTECTION ZONE (TPZ) OF AN EXISTING TREE. ALL ACCESS THROUGH THE TPZ OF AN EXISTING TREE MUST BE INDICATED ON THE APPROVED LMP.
 11.1. VEHICLE ACCESS THROUGH THE TPZ OF AN EXISTING TREE IS STRICTLY PROHIBITED UNLESS INDICATED AND APPROVED ON THE PROJECT LMP.
 11.2. VEHICLE ACCESS WITHIN THE STRUCTURAL ROOTS ZONE (REFER TO CURRENT AS 4970) IS STRICTLY PROHIBITED.
 11.3. VEHICLE ACCESS THROUGH A LOW HANGING CANOPY (LESS THAN 3.5 M CLEARANCE FROM EXISTING GROUND TO THE LOWEST MAJOR LIMB) IS STRICTLY PROHIBITED.
 11.4. CLEARLY MARK OUT THE APPROVED ACCESS ROUTE ON SITE SO VEHICLES DO NOT DEVIATE FROM THE APPROVED ROUTE.
 11.5. ACCESS ROUTE STABILISATION WITHIN THE TPZ
 11.5.1. PLACE A MINIMUM 200 MM LAYER OF ORGANIC 25 MM WOOD CHIP MULCH ON THE AREA OF THE TPZ THE VEHICLE ROUTE PASSES THROUGH. THE MULCH LAYER IS TO BE MAINTAINED AT THIS THICKNESS UNDER VEHICLE ROUTES AS LONG AS ACCESS IS REQUIRED.
 11.5.2. PLACE A PROTECTIVE BOARD (RUMBLE BOARD) OVER THE MULCH ENSURING EACH BOARD IS SECURELY CONNECTED TO THE NEXT BOARD (AS REQUIRED) WITH GAPS NO GREATER THAN 30 MM BETWEEN BOARDS.
 11.5.3. BOARDS MUST BE KEPT IN PLACE AND IN GOOD CONDITION FOR AS LONG AS ACCESS IS REQUIRED.
 11.5.4. ALTERNATIVE STABILISATION METHODOLOGY FOR AN ACCESS ROUTE, SUCH AS TO ENABLE ACCESS FOR HEAVY VEHICLES, MUST BE BASED ON A DESIGN BY A SUITABLY QUALIFIED DESIGNER AND MUST BE APPROVED FOR USE BY TCCS.
 11.6. WHERE VEHICLES ARE LIKELY TO CONFLICT WITH BRANCHES, BRANCH PROTECTION MUST BE IMPLEMENTED. REFER TO CANOPY PROTECTION AND TRUNK/BRANCH PROTECTION FOR LMB PROTECTION REQUIREMENTS.
 11.7. IF PRUNING OF A TREE IS REQUIRED TO FACILITATE ACCESS, REFER TO CANOPY PROTECTION FOR PRUNING REQUIREMENTS.
 11.8. VEHICLE ACCESS THROUGH THE TPZ OF AN EXISTING TREE MUST NOT BE CLOSER THAN 3 M TO THE TRUNK OF THE TREE UNLESS OTHERWISE AGREED WITH TCCS.
 12. **RECTIFICATION OF UNLEASED LAND**
 THIS SECTION OF NOTES IS APPLICABLE TO ALL DEVELOPMENTS.
 12.1. AT THE FINALISATION OF THE DEVELOPMENT WORKS, THE TERRITORY ASSETS IN UNLEASED LAND ADJACENT THE DEVELOPMENT MUST BE UNALTERED AND IN THE SAME OR BETTER CONDITION THAN BEFORE THE DEVELOPMENT WORKS COMMENCED, UNLESS ADJUSTMENTS TO THESE ASSETS HAVE BEEN APPROVED BY TCCS.
 12.2. WHERE TERRITORY ASSETS ON UNLEASED LAND HAVE BEEN DAMAGED BY THE DEVELOPMENT, THESE ASSETS MUST BE FULLY RECTIFIED AT THE COST OF THE DEVELOPER TO THE REQUIREMENTS IN THE TCCS MUNICIPAL INFRASTRUCTURE TECHNICAL SPECIFICATIONS, OR THE REQUIREMENTS IN THE COMPOSITE VERGE LANDSCAPE PLAN, AS APPROVED BY TCCS.
 13. **SITE SPECIFIC TREE PROTECTION MEASURES**
 13.1. THIS SECTION IS WHERE THE PROPOSITOR OR TCCS CAN INSERT ADDITIONAL SITE-SPECIFIC PROTECTION REQUIREMENTS TO THE ABOVE – DELETE IF NOT APPLICABLE



EXISTING		PROPOSED	
TEL	COMMS / TEL	TEL	TEL
SW	STORMWATER	SW	SW
ELE	ELEC	ELE	ELE
E A/G	ELEC ABOVE GROUND	E A/G	E A/G
E HV	ELEC HV	E HV	E HV
E LV	ELEC LV	E LV	E LV
GAS	GAS	GAS	GAS
S	SEWER	S	S
S R/M	SEWER RISING MAIN	S R/M	S R/M
W	WATER	W	W
W (P)	WATER - PRIVATE DISCONNECT	W (P)	W (P)
SW MANHOLE	SW PIT	SW MANHOLE	SW PIT
SW SUMP	SERVICE ENDCAP	SW SUMP	SERVICE ENDCAP
SCOUR STOP	TANK - ABOVE GROUND	SCOUR STOP	TANK - ABOVE GROUND
TANK - ABOVE GROUND	TANK - BELOW GROUND	TANK - ABOVE GROUND	TANK - BELOW GROUND
WATER HYDRANT	WATER METER	WATER HYDRANT	WATER METER
WATER VALVE	WATER THRUST BLOCK	WATER VALVE	WATER THRUST BLOCK
SEWER MANHOLE	SEWER ENDCAP	SEWER MANHOLE	SEWER ENDCAP
SEWER RODDING POINT	SCOUR STOP	SEWER RODDING POINT	SCOUR STOP
STREET LIGHT	ELECTRICITY POLE	STREET LIGHT	ELECTRICITY POLE
STREET TREE		STREET TREE	



NOT FOR CONSTRUCTION

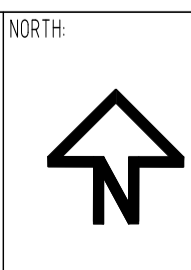
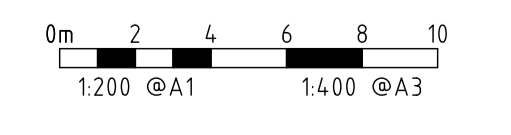
<p>5 TORRENS STREET BRADDON ACT 2612 WWW.ACTCE.COM.AU - 08453ACTCE.COM.AU - 1801 810 8111</p>	<p>NORTH</p>	REV	REVISION	DATE	DESIGNED	DRAWN	APPROVED	REV	REVISION	DATE	DESIGNED	DRAWN	APPROVED	DEVELOPER	NJEGOSA POPOVICH	PROJECT: PROPOSED MULTI UNIT DEVELOPMENT	SITE ADDRESS: BLOCK 11 SECTION 3 DEAKIN 4 CANTERBURY CRESCENT DEAKIN	SCALE	DATE	DRAWING No.				
		A	FOR DEVELOPMENT APPLICATION	18.03.2026	RI	RI	LK	F														AS SHOWN	18.03.2026	C02
		B							G													PROJECT No.	REVISION	
		C							H													25-1010	A	
		D							I													DRAWING TITLE		
E							J													CONSTRUCTION MANAGEMENT NOTES AND DETAILS				



NOT FOR CONSTRUCTION

ACT CONSULTING ENGINEERS
CIVIL • STRUCTURAL • HYDRAULIC

5 TORRENS STREET BRADDOON ACT 2612
WWW.ACTCE.COM.AU - OFFICE@ACTCE.COM.AU - 1801 4103 8611



REV	REVISION	DATE	DESIGNED	DRAWN	APPROVED	REV	REVISION	DATE	DESIGNED	DRAWN	APPROVED
A	FOR DEVELOPMENT APPLICATION	18.03.2026	RI	RI	LK	F					
B						G					
C						H					
D						I					
E						J					

DEVELOPER: NJGOSA POPOVICH
BUILDER: NTA

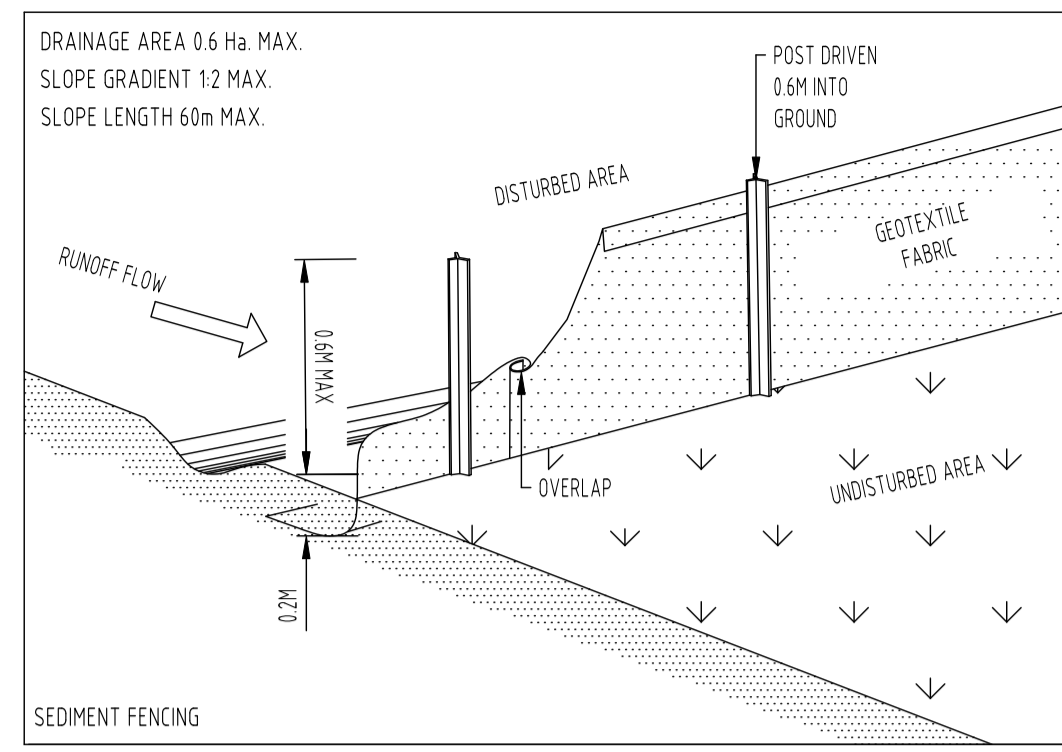
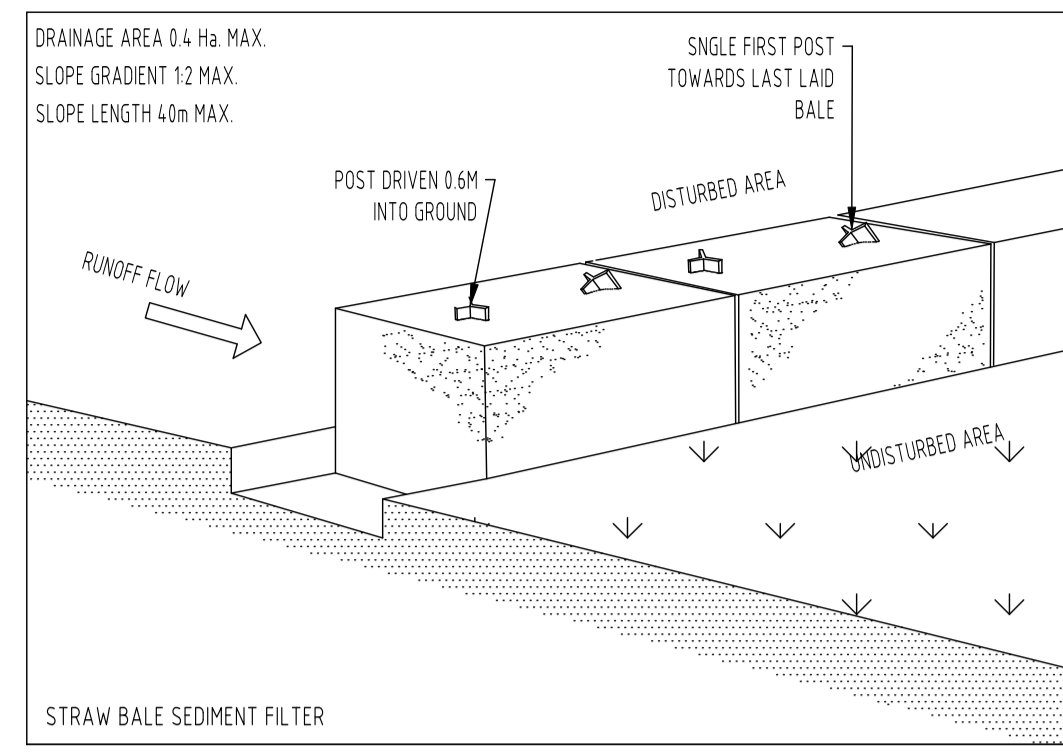
PROJECT: PROPOSED MULTI UNIT DEVELOPMENT

SITE ADDRESS: BLOCK 11 SECTION 3 DEAKIN
4 CANTERBURY CRESCENT
DEAKIN

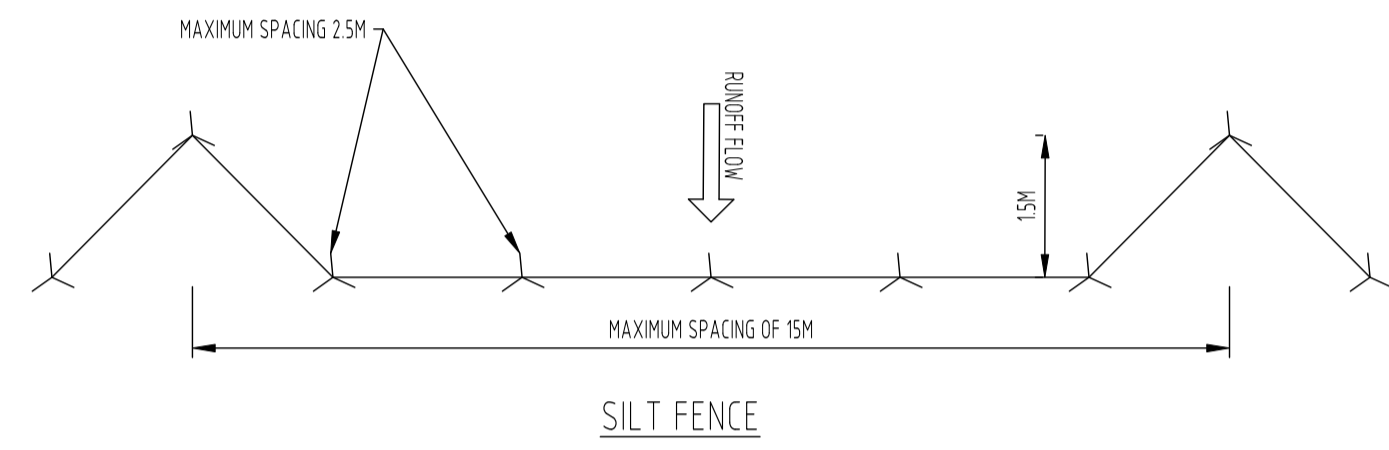
SCALE: AS SHOWN
PROJECT No: 25-1010
DRAWING TITLE: TREE / LANDSCAPE MANAGEMENT AND PROTECTION PLAN

DATE: 18.03.2026
REVISION: A

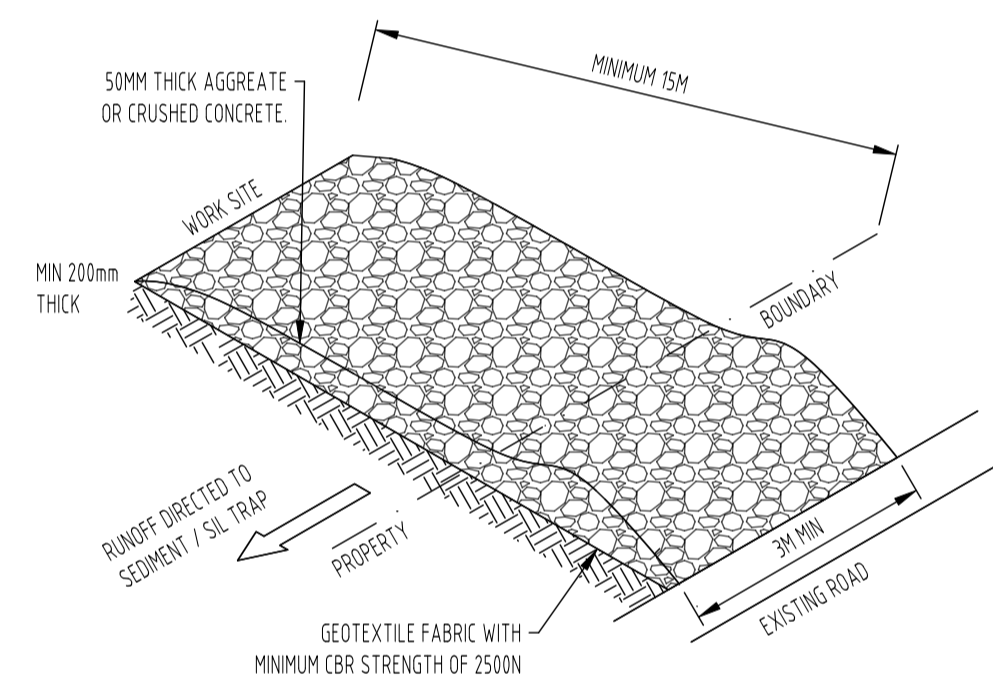
DRAWING No: C03



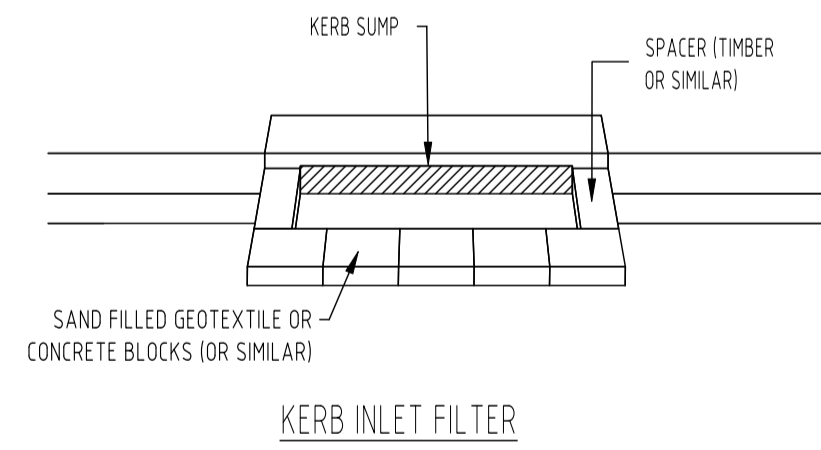
SEDIMENT CONTROL DETAILS



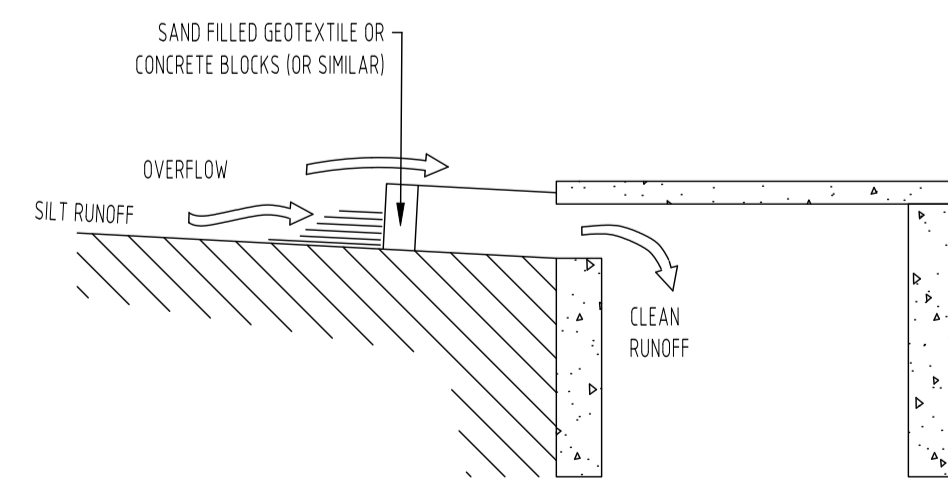
SILT FENCE



STABILISED CONSTRUCTION ACCESS



KERB INLET FILTER



KERB INLET FILTER - SECTION

WORK HOURS		
BUILDING WORK DETAIL	MONDAY TO SATURDAY	SUNDAY AND PUBLIC HOLIDAYS
INDUSTRIAL, CITY AND TOWN CENTRES	6AM TO 8PM	6AM TO 8PM
ANY OTHER AREA WHEN COMPLETED WITHIN 2 WEEKS	7AM TO 8PM	8AM TO 8PM
ANY OTHER AREA WHEN NOT COMPLETED WITHIN 2 WEEKS	7AM TO 6PM	CONSTRUCTION WORK MUST NOT EXCEED NOISE STANDARD

ALL WORKS ARE TO BE UNDERTAKEN IN ACCORDANCE WITH THE ENVIRONMENTAL PROTECTION GUIDELINES FOR CONSTRUCTION AND LAND DEVELOPMENT IN THE ACT 2022.

NOT FOR CONSTRUCTION



Use written dimensions only. This drawing, and the information contained within, is copyright to ACT Consulting Engineers Pty Ltd. Using or copying this drawing, in part or whole, without the prior consent of ACT Consulting Engineers Pty Ltd may result in legal action. © ACT Consulting Engineers Pty Ltd

NORTH

REV	REVISION	DATE	DESIGNED	DRAWN	APPROVED	REV	REVISION	DATE	DESIGNED	DRAWN	APPROVED
A	FOR DEVELOPMENT APPLICATION	18.03.2026	RI	RI	LK	F					
B						G					
C						H					
D						I					
E						J					

DEVELOPER:

NJEGOSA POPOVICH

BUILDER:

NTA

PROJECT:

PROPOSED MULTI UNIT DEVELOPMENT

SITE ADDRESS:

BLOCK 11 SECTION 3 DEAKIN
4 CANTERBURY CRESCENT
DEAKIN

SCALE:

AS SHOWN

PROJECT No: 25-1010

REVISION: A

DRAWING TITLE:

POLLUTION CONTROL AND MANAGEMENT NOTES 2

DATE:

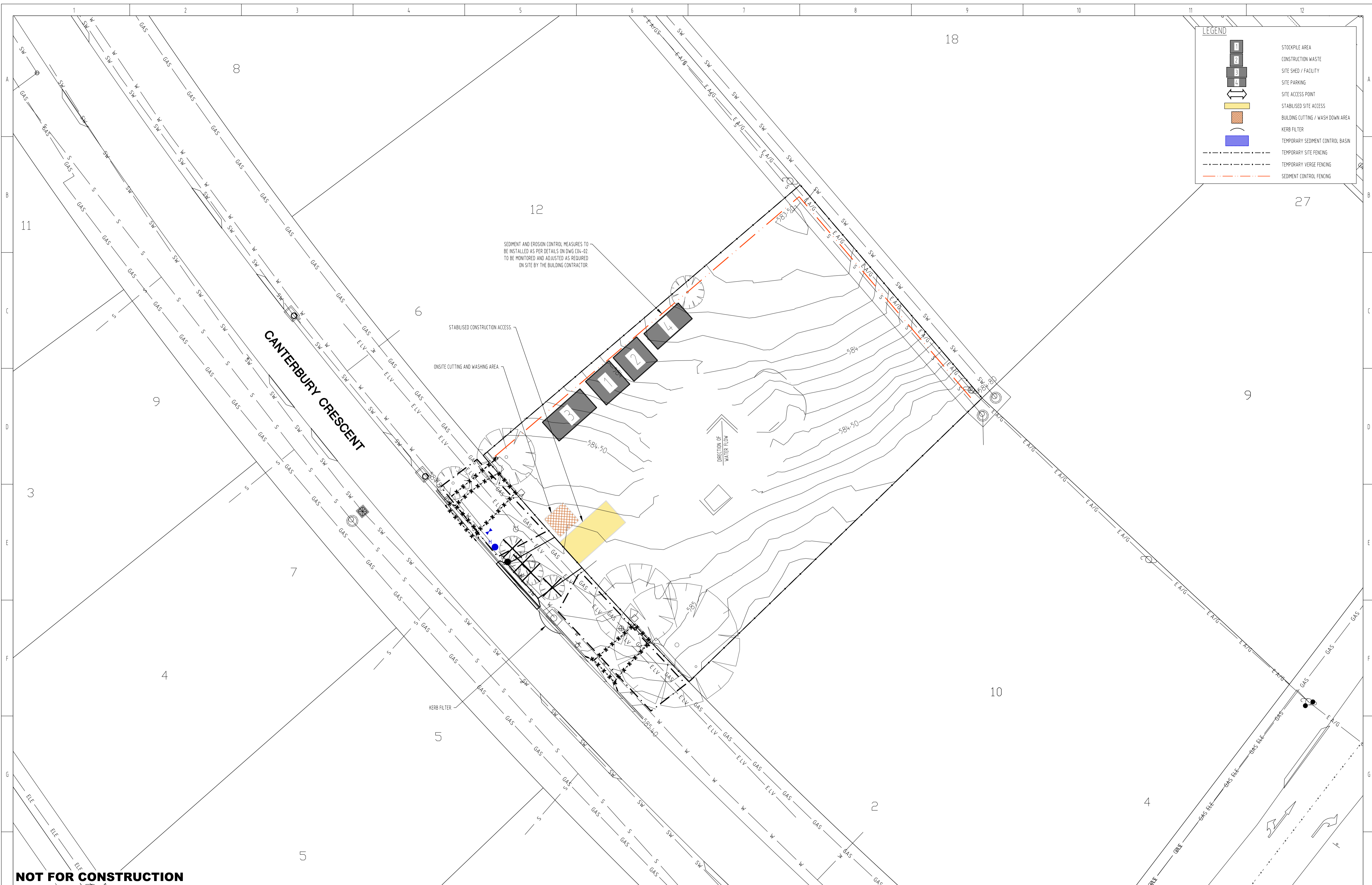
18.03.2026

REVISION:

A

DRAWING No:

C04-02



LEGEND

- 1 STOCKPILE AREA
- 2 CONSTRUCTION WASTE
- 3 SITE SHED / FACILITY
- 4 SITE PARKING
- ↔ SITE ACCESS POINT
- ▭ STABILISED SITE ACCESS
- ▨ BUILDING CUTTING / WASH DOWN AREA
- ▧ KERB FILTER
- ▩ TEMPORARY SEDIMENT CONTROL BASIN
- - - TEMPORARY SITE FENCING
- · - · - TEMPORARY VERGE FENCING
- · - · - SEDIMENT CONTROL FENCING

SEDIMENT AND EROSION CONTROL MEASURES TO BE INSTALLED AS PER DETAILS ON DWG C04-02 TO BE MONITORED AND ADJUSTED AS REQUIRED ON SITE BY THE BUILDING CONTRACTOR.

CANTERBURY CRESCENT

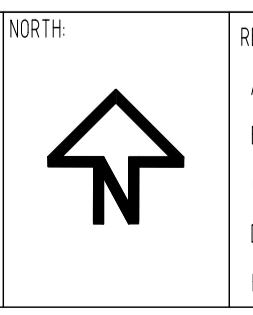
NOT FOR CONSTRUCTION

ACT CONSULTING ENGINEERS
 CIVIL • STRUCTURAL • HYDRAULIC

5 TORRENS STREET BRADDOON ACT 2612
 WWW.ACTCE.COM.AU - OFFICE@ACTCE.COM.AU - 081 910 8611

Scale: 1:200 @A1, 1:400 @A3

Use written dimensions only. This drawing, and the information contained within, is copyright to ACT Consulting Engineers Pty Ltd. Using or copying this drawing, in part or whole, without the prior consent of ACT Consulting Engineers Pty Ltd may result in legal action. © ACT Consulting Engineers Pty Ltd



REV	REVISION	DATE	DESIGNED	DRAWN	APPROVED	REV	REVISION	DATE	DESIGNED	DRAWN	APPROVED	DEVELOPER
A	FOR DEVELOPMENT APPLICATION	18.03.2026	RI	RI	LK	F						NJGOSA POPOVICH
B						G						
C						H						
D						I						
E						J						

DEVELOPER: NJGOSA POPOVICH

BUILDER: NTA

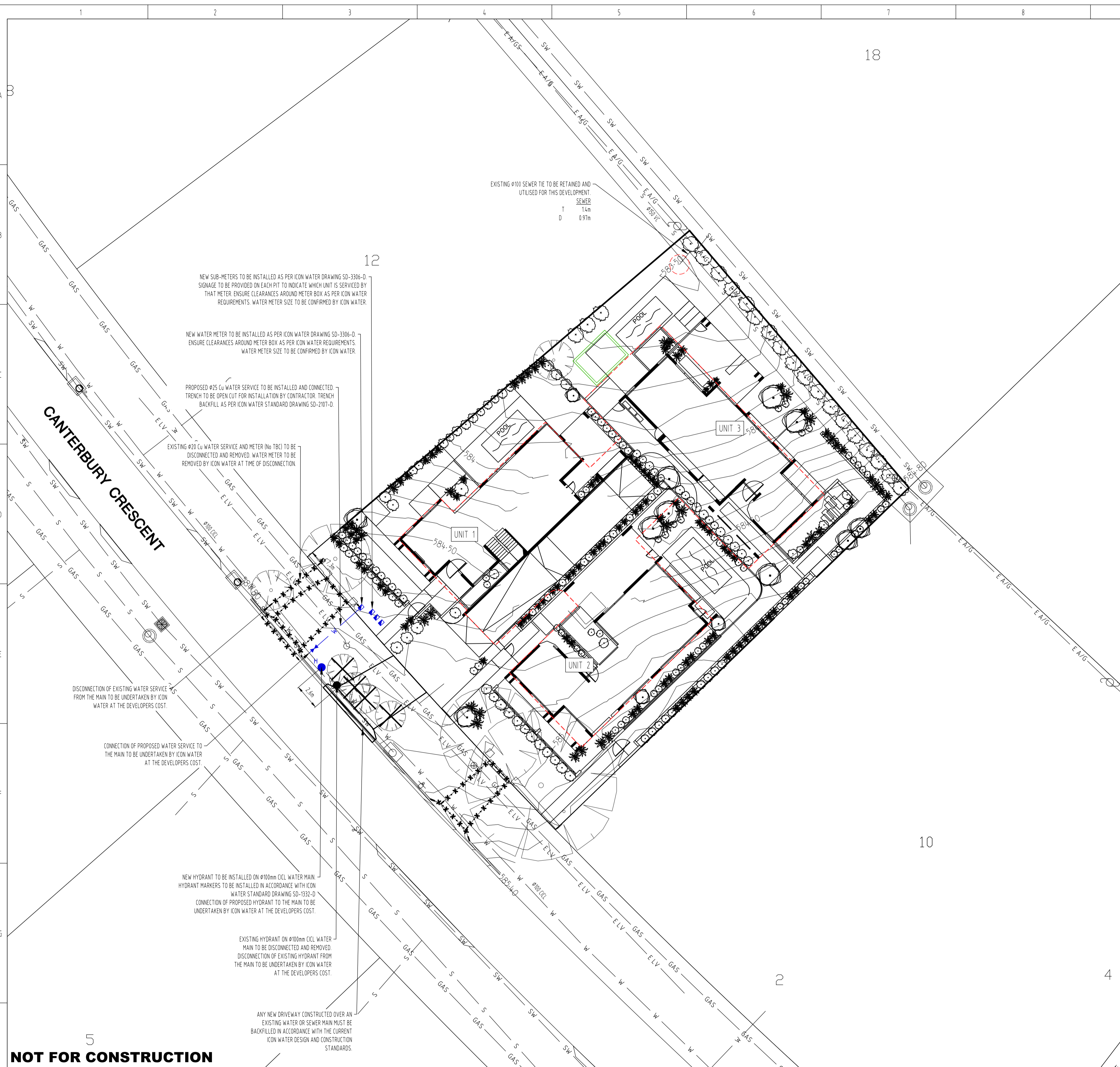
PROJECT: PROPOSED MULTI UNIT DEVELOPMENT

SITE ADDRESS: BLOCK 11 SECTION 3 DEAKIN, 4 CANTERBURY CRESCENT, DEAKIN

SCALE: AS SHOWN
 PROJECT No: 25-1010
 DRAWING TITLE: POLLUTION CONTROL AND MANAGEMENT PLAN

DATE: 18.03.2026
 REVISION: A

DRAWING No: C04-03



EXTERNAL SERVICES

GENERAL NOTES

- ALL WORK ON WATER SUPPLY AND SEWER MAINS IS TO BE CARRIED OUT IN ACCORDANCE WITH THE CURRENT ICON WATER'S WATER SUPPLY AND SEWERAGE STANDARDS. ALL WORK ON STORMWATER MAINS TO BE CARRIED OUT IN ACCORDANCE WITH DESIGN STANDARDS FOR URBAN INFRASTRUCTURE WORKS.
- CONNECTIONS AND OR DISCONNECTIONS OF SEWER AND WATER AT THE MAIN TO BE MADE BY ICON WATER AT THE CONTRACTORS EXPENSE. THE CONTRACTOR IS TO EXPOSE THE MAIN AT THE LOCATION OF THE CONNECTION/DISCONNECTION IN PREPARATION FOR THE WORK BY ICON WATER. ALL EXCAVATION IN THE VICINITY OF MAINS IS TO BE CARRIED OUT BY HAND.
- THE CONTRACTOR MUST VISIT THE SITE OF WORKS BEFORE TENDERING AND MAKE ALLOWANCES ON HIS TENDER FOR ALL TOPOGRAPHIC CONSTRAINTS AFFECTING THE EXECUTION OF THE WORKS AND THE RESTORATION OF THE SITE.
- ALTHOUGH THE POSITION OF EXISTING UNDERGROUND SERVICES HAVE BEEN PLOTTED FROM AVAILABLE RECORDS, THE CONTRACTOR SHALL CONFIRM THE DEPTH AND LOCATION OF ALL SERVICES ON SITE BEFORE COMMENCING EXCAVATIONS.
- ALL LEVELS TO AUSTRALIAN HEIGHT DATUM (AHD). ALL COORDINATES ARE BASED ON THE CANBERRA LOCAL GRID SYSTEM.
- THE CONTRACTOR MUST SECURE ALL PERMITS, ARRANGE ALL CLEARANCES AND PAY ALL FEES REQUIRED TO COMPLETE THE PROJECT PRIOR TO THE COMMENCEMENT OF WORK.
- WORK AS EXECUTED DRAWINGS AND TIE BOOK MUST BE SUBMITTED BEFORE CONNECTION.
- ANY NON-METALLIC WATER SERVICE IS TO BE INSTALLED WITH TRACER WIRE AND TESTED.
- EXCESS EXCAVATED MATERIAL SHALL BE REMOVED FROM THE SITE AND DUMPED AT AN APPROVED SPOIL AREA.
- THE CONTRACTOR SHALL REINSTATE ALL DISTURBED SURFACES TO MATCH EXISTING.
- THE CONTRACTOR IS RESPONSIBLE FOR THE PREPARATION OF ALL NECESSARY TEMPORARY TRAFFIC MANAGEMENT PLANS AND THEIR APPROVAL.
- CONTRACTOR TO CONFIRM DEPTH OF SEWER AND STORMWATER TIE POINTS PRIOR TO THE COMMENCEMENT OF CONSTRUCTION. ADVISE DESIGN ENGINEER IF NOT IN ACCORDANCE WITH THE PLAN.
- ANY NEW DRIVEWAY CONSTRUCTED OVER AN EXISTING WATER OR SEWER MAIN MUST BE BACKFILLED IN ACCORDANCE WITH THE CURRENT ICON WATER DESIGN AND CONSTRUCTION STANDARDS.

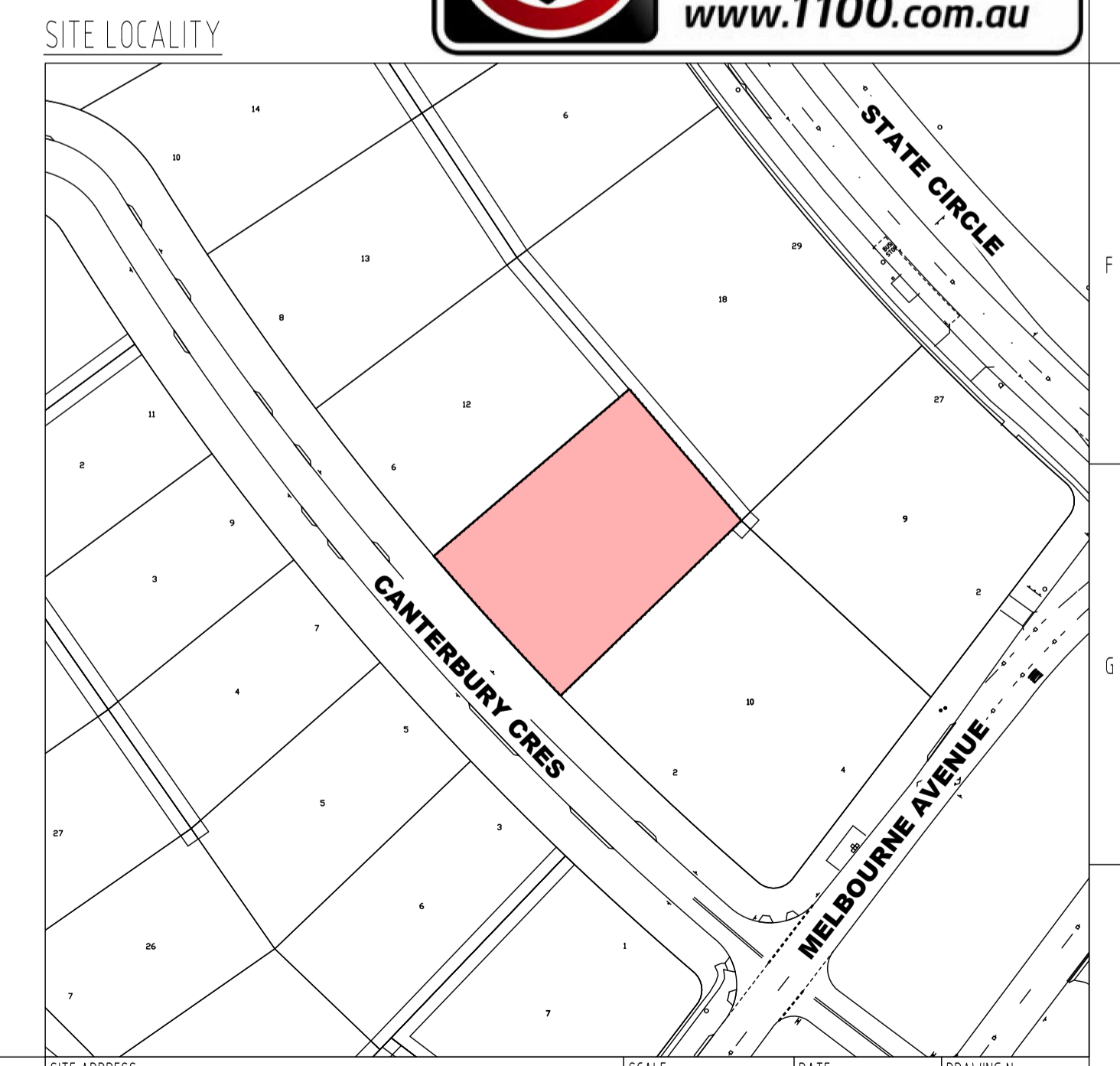
LEGEND

EXISTING	TEL	COMMS / TEL	PROPOSED	TEL
	SW	STORMWATER		SW
	ELEC	ELEC		ELEC
	E A/G	ELEC ABOVE GROUND		E A/G
	E HV	ELEC HV		E HV
	E LV	ELEC LV		E LV
	GAS	GAS		GAS
	S	SEWER		S
	S R/M	SEWER RISING MAIN		S R/M
	W	WATER		W
	W (P)	WATER - PRIVATE		W (P)
	DISCONNECT			DISCONNECT
	SW MANHOLE			SW MANHOLE
	SW PIT			SW PIT
	SW SUMP			SW SUMP
	SERVICE ENDCAP			SERVICE ENDCAP
	SCOUR STOP			SCOUR STOP
	TANK - ABOVE GROUND			TANK - ABOVE GROUND
	TANK - BELOW GROUND			TANK - BELOW GROUND
	WATER HYDRANT			WATER HYDRANT
	WATER METER			WATER METER
	WATER VALVE			WATER VALVE
	WATER THRUST BLOCK			WATER THRUST BLOCK
	SEWER MANHOLE			SEWER MANHOLE
	SEWER ENDCAP			SEWER ENDCAP
	SEWER RODDING POINT			SEWER RODDING POINT
	SCOUR STOP			SCOUR STOP
	STREET LIGHT			STREET LIGHT
	ELECTRICITY POLE			ELECTRICITY POLE
	STREET TREE			STREET TREE
	BASEMENT EXTENTS			BASEMENT EXTENTS

UNIT METERING: WATER METER DETAIL

UNIT #	WM SERIAL #
BULK	TBA
1	TBA
2	TBA
3	TBA

- UNIT METERS**
- UNIT METERS TO BE OWNED AND MAINTAINED BY ICON WATER
 - INTERNAL MAINS TO BE OWNED AND MAINTAINED BY BODY CORPORATE



NOT FOR CONSTRUCTION

ACT CONSULTING ENGINEERS
 CIVIL • STRUCTURAL • HYDRAULIC

5 TORRENS STREET BRADSON ACT 2612
 WWW.ACTCE.COM.AU - OFFICE@ACTCE.COM.AU - 021 910 8611

Scale: 1:200 @A1, 1:400 @A3

North arrow pointing up.

REV	REVISION	DATE	DESIGNED	DRAWN	APPROVED	REV	REVISION	DATE	DESIGNED	DRAWN	APPROVED	DEVELOPER
A	FOR DEVELOPMENT APPLICATION	18.03.2026	RI	RI	LK	F						NJEGOSA POPOVICH
B						G						
C						H						
D						I						
E						J						

PROJECT: PROPOSED MULTI UNIT DEVELOPMENT

DEVELOPER: NJEGOSA POPOVICH

BUILDER: NTA

SITE ADDRESS: BLOCK 11 SECTION 3 DEAKIN, 4 CANTERBURY CRESCENT, DEAKIN

SCALE: AS SHOWN, PROJECT No: 25-1010, DRAWING TITLE: EXTERNAL SERVICES PLAN

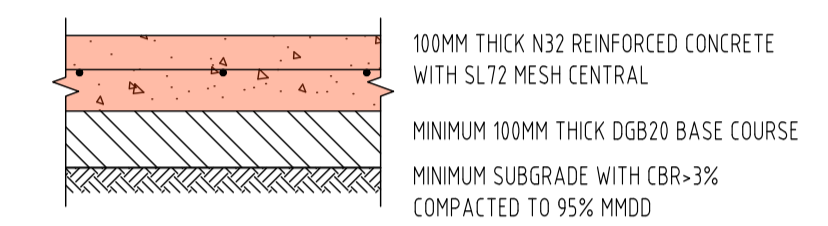
DATE: 18.03.2026, REVISION: A, DRAWING No: C05

DRIVEWAY CONSTRUCTION AND CONCRETE WORKS

- GENERAL NOTES**
- THE COST OF OFF SITE CONCRETE WORKS ARE TO BE AT FULL COST TO THE DEVELOPER.
 - THE MODIFICATION OF EXISTING VERGE LEVELS IS NOT PERMITTED WITHOUT THE PRIOR APPROVAL FROM TRANSPORT CANBERRA AND CITY SERVICES.
 - DRIVEWAYS ARE TO BE CONSTRUCTED, UNLESS NOTED OTHERWISE, A MINIMUM OF
 - 1200mm AWAY FROM INFRASTRUCTURE SUCH AS SUMPS AND PITS.
 - 1500mm AWAY FROM STREET LIGHTS, PILLARS, SUBSTATIONS, AND BUS SHELTERS.
 - 3000mm AWAY FROM TREES.

- SPECIFICATION - DRIVEWAYS**
- ALL CONCRETE SHALL BE GRADE 32 (32 MPa). AGGREGATE SIZE TO BE 20mm MAXIMUM.
 - PAVEMENT TO BE MINIMUM OF 150mm THICK AND REINFORCED WITH SL72 MESH AT 50mm TOP COVER UNLESS OTHERWISE NOTED.
 - ALL DRIVEWAYS SHALL BE CONSTRUCTED ON GRANULAR SUBBASE CLASS 1 WITH 100MM MINIMUM THICKNESS AND COMPACTED TO 95% MMD.
 - DRIVEWAYS SHALL BE INSPECTED AT FORM WORK, PRIOR TO POURING CONCRETE, BY A MEMBER OF TRANSPORT CANBERRA AND CITY SERVICES OR THE DESIGN ENGINEER.
 - BROOMED FINISH TO BE APPLIED TO ALL KERB CROSSINGS AND PRAM RAMP. ALL OTHER EXPOSED SURFACES TO HAVE STEEL FLOAT FINISH.
 - ALL CONCRETE TO BE WATER CURED CONTINUOUSLY FOR 3 DAYS OR ALTERNATIVELY COATED WITH AN APPROVED CURING COMPOUND.

- SPECIFICATION - KERBS, FOOTPATHS AND MINOR WORKS**
- CONSTRUCTION OF CONCRETE KERBING, LAYBACKS AND FOOTPATHS SHALL BE DONE IN ACCORDANCE WITH TRANSPORT CANBERRA AND CITY SERVICES STANDARD DRAWINGS AND SPECIFICATIONS.
 - ALL CONCRETE TO BE MINIMUM GRADE N32 (32MPa) UNLESS NOTED OTHERWISE. AGGREGATE SIZE TO BE 20 MAXIMUM.
 - JOINTS IN THE CONCRETE SHALL BE AS PER THE GIVEN DETAILS, IN ACCORDANCE WITH TRANSPORT CANBERRA AND CITY SERVICES STANDARDS.
 - ALL KERBS, GUTTERS, INVERTS AND CROSSINGS TO BE CONSTRUCTED ON COMPACTED GRANULAR SUBBASE CLASS 1 (SB1) OF 75mm MINIMUM THICKNESS OR AS OTHERWISE DETAILED.
 - EXPANSION JOINTS (EJ) TO BE SEALED WITH 12mm JOINTEX FOR THE FULL DEPTH OF THE SECTION AND CUT TO PROFILE. EJS TO BE LOCATED AT ALL DRAINAGE STRUCTURES (BOTH SIDES), ON TOPS OF CURVES LESS THAN 15m RADIUS AND ELSEWHERE AT 15m CENTRES.
 - WEAREDED PLANE JOINTS (WJ) TO BE 3mm WIDE TO 1/4 DEPTH FOR EXTRUDED WORK AND TO THE FULL DEPTH OF FORMED SECTIONS. WJS TO BE LOCATED AT ALL VCS, PCS AND ELSEWHERE AT 3m CENTRES.
 - FOR KERB LAD BY MACHINE, RADII AT THE TOP OF KERB FACE TO BE REDUCED TO 10mm.
 - BROOMED FINISH TO BE APPLIED TO ALL KERB CROSSINGS AND PRAM RAMP. ALL OTHER EXPOSED SURFACES TO HAVE STEEL FLOAT FINISH.
 - ALL CONCRETE TO BE WATER CURED CONTINUOUSLY FOR 3 DAYS OR ALTERNATIVELY COATED WITH AN APPROVED CURING COMPOUND.



CONCRETE PAVEMENT - 100mm



EXISTING DRIVEWAY TO BE REMOVED AND VERGE RENSTATED. NEW KERB AND GUTTER TO BE CONSTRUCTED IN PLACE OF EXISTING LAYBACK. ENSURE SMOOTH TRANSITION OF NEW KERB TO EXISTING KERB

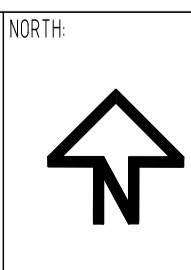
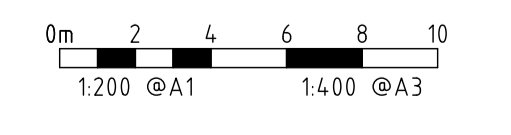
DRIVEWAY 1 REFER TO DRIVEWAY DETAIL ON DWG C07.

EXISTING DRIVEWAY TO BE REMOVED AND VERGE RENSTATED. NEW KERB AND GUTTER TO BE CONSTRUCTED IN PLACE OF EXISTING LAYBACK. ENSURE SMOOTH TRANSITION OF NEW KERB TO EXISTING KERB

NOT FOR CONSTRUCTION

ACT CONSULTING ENGINEERS
CIVIL • STRUCTURAL • HYDRAULIC

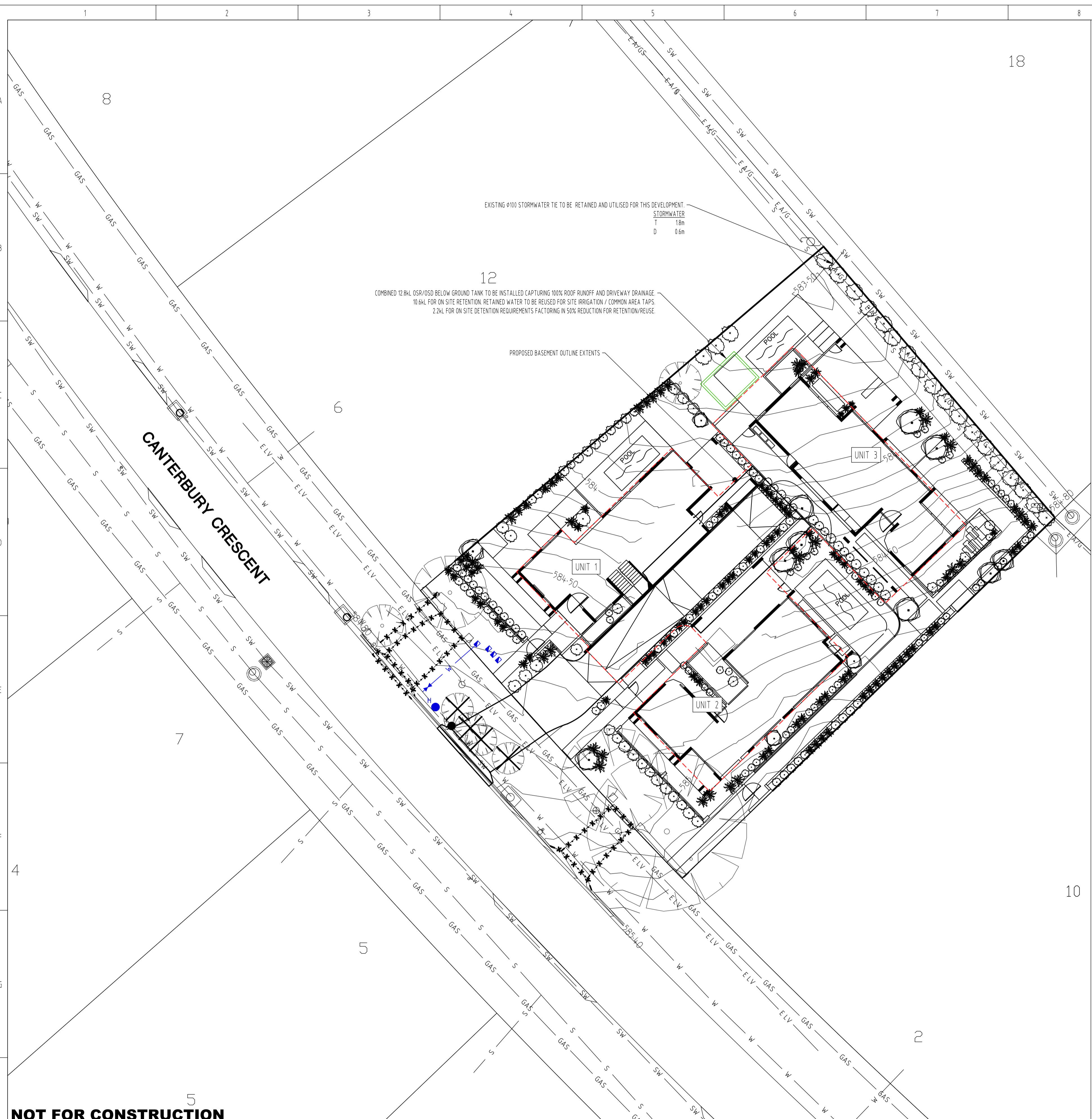
5 TORRENS STREET BRADDON ACT 2612
WWW.ACTCE.COM.AU - OFFICE@ACTCE.COM.AU - 021 410 0611



REV	REVISION	DATE	DESIGNED	DRAWN	APPROVED	REV	REVISION	DATE	DESIGNED	DRAWN	APPROVED	DEVELOPER
A	FOR DEVELOPMENT APPLICATION	18.03.2026	RI	RI	LK	F						NJGOSA POPOVICH
B						G						
C						H						
D						I						
E						J						

PROJECT:	PROPOSED MULTI UNIT DEVELOPMENT
DEVELOPER:	NJGOSA POPOVICH
BUILDER:	NTA
SITE ADDRESS:	BLOCK 11 SECTION 3 DEAKIN 4 CANTERBURY CRESCENT DEAKIN

SCALE:	AS SHOWN	DATE:	18.03.2026	DRAWING No:	C06
PROJECT No:	25-1010	REVISION:	A		
DRAWING TITLE:	CIVIL WORKS PLAN				



Percentage Reduction	=	42%
Indoor information		
Number of bedrooms in the entire complex		11
What is the water rating of the shower heads?		5 Star
What is the water rating of the clothes washing machines?		3 Star
What is the water rating of the dishwashers?		3 Star
What is the water rating of the toilets?		4 Star
Site information		
Site area (m ²)?		1,732
Total Roof area (m ²)?		880
Lawn area (m ²)?		
Irrigated garden area (m ²)?		200
Impervious pavement or driveway (m ²)?		190
Rain water tank information		
Are there going to be water tanks installed?		Yes
What is the total size of all the tanks (L)?		12,800
What is the total roof area flowing into the tanks (m ²)?		880
What will be the use for the water in the tanks?		Garden
Grey Water information		
What type of grey water system is installed?		None
What is the size of the grey water storage tank (L)?		0
Where will the grey water be collected from?		
What will be the use for the grey water?		
Pool, Spa or Pond information		
Is there going to be a pool, spa, or pond?		Pool
Is there going to be a cover on the pool or spa?		Yes
Average depth of the pool, spa or pond (m)?		1.2
Average length of the pool, spa or pond (m)?		5.5
Average width of the pool, spa or pond (m)?		2.4
The volume of the pool, spa or pond is (L) =		15,840

EXISTING		PROPOSED	
TEL	COMMS / TEL	TEL	TEL
SW	STORMWATER	SW	SW
ELE	ELEC	ELE	ELE
E A/G	ELEC ABOVE GROUND	E A/G	E A/G
E HV	ELEC HV	E HV	E HV
E LV	ELEC LV	E LV	E LV
GAS	GAS	GAS	GAS
S	SEWER	S	S
S R/M	SEWER RISING MAIN	S R/M	S R/M
W	WATER	W	W
W (P)	WATER - PRIVATE DISCONNECT	W (P)	W (P)
SW MANHOLE		SW MANHOLE	SW MANHOLE
SW PIT		SW PIT	SW PIT
SW SUMP		SW SUMP	SW SUMP
SERVICE ENDCAP		SERVICE ENDCAP	SERVICE ENDCAP
SCOUR STOP		SCOUR STOP	SCOUR STOP
TANK - ABOVE GROUND		TANK - ABOVE GROUND	TANK - ABOVE GROUND
TANK - BELOW GROUND		TANK - BELOW GROUND	TANK - BELOW GROUND
WATER HYDRANT		WATER HYDRANT	WATER HYDRANT
WATER METER		WATER METER	WATER METER
WATER VALVE		WATER VALVE	WATER VALVE
WATER THRUST BLOCK		WATER THRUST BLOCK	WATER THRUST BLOCK
SEWER MANHOLE		SEWER MANHOLE	SEWER MANHOLE
SEWER ENDCAP		SEWER ENDCAP	SEWER ENDCAP
SEWER RODDING POINT		SEWER RODDING POINT	SEWER RODDING POINT
SCOUR STOP		SCOUR STOP	SCOUR STOP
STREET LIGHT		STREET LIGHT	STREET LIGHT
ELECTRICITY POLE		ELECTRICITY POLE	ELECTRICITY POLE
STREET TREE		STREET TREE	STREET TREE

WATER SENSITIVE URBAN DESIGN GENERAL CODE COMPLIANCE TABLE	
RULE	PROPOSED COMPLIANCE MEASURES
1.1 - R1 - MAINS WATER USE REDUCTION TARGET	40% REDUCTION ACHIEVED. SPREADSHEET ATTACHED.
2.1 - R2 - ON-SITE STORMWATER RETENTION	TOTAL IMPERVIOUS AREA = 761m ² , TOTAL ON-SITE RETENTION = 10.6kL
2.2 - R3 - ON-SITE STORMWATER DETENTION	TOTAL IMPERVIOUS AREA = 761m ² , TOTAL ON-SITE DETENTION = 2.2kL (50% REDUCTION FOR SITE REUSE APPLIED AS PER ACT WSUD CODE)
2.3 - R4 - STORMWATER QUANTITY FOR MAJOR ROAD ON SITES OVER 2000M ²	NOT APPLICABLE
2.4 ON-SITE STORMWATER DETENTION FOR ESTATE DEVELOPMENT PLANS	NOT APPLICABLE
3.1 - R6 - STORMWATER QUALITY TARGET - SITES GREATER THAN 2000M ²	NOT APPLICABLE
3.2 - R7 - STORMWATER QUALITY TARGET - MAJOR ROADS	NOT APPLICABLE
4.1 NUISANCE FLOODING - SITES GREATER THAN 2000M ²	NOT APPLICABLE
4.2 - R9 - GREEN/LIVING INFRASTRUCTURE	REFER TO LANDSCAPE PLANS FOR DETAILS
5.1 WATER INFRASTRUCTURE	NOT APPLICABLE

MINIMUM INTERNAL DIMENSIONS FOR STORMWATER INLET PITS			
DEPTH TO INVERT OF OUTLET	MINIMUM INTERNAL DIMENSIONS		
	WIDTH	LENGTH	CIRCULAR DIAMETER
LESS THAN OR EQUAL TO 600mm	450	450	600
BETWEEN 600mm AND 900mm	600	600	900
BETWEEN 900mm AND 1200mm	600	900	1000
OVER 1200mm	900	900	1000

REF: AS3500.3:2 TABLE B.2

NOT FOR CONSTRUCTION

ACT CONSULTING ENGINEERS
 CIVIL • STRUCTURAL • HYDRAULIC

5 TORRENS STREET BRADDON ACT 2612
 WWW.ACTCE.COM.AU - OFFICE@ACTCE.COM.AU - 081 410 0611

Use written dimensions only. This drawing, and the information contained within, is copyright to ACT Consulting Engineers Pty Ltd. Using or copying this drawing, in part or whole, without the prior consent of ACT Consulting Engineers Pty Ltd may result in legal action. © ACT Consulting Engineers Pty Ltd

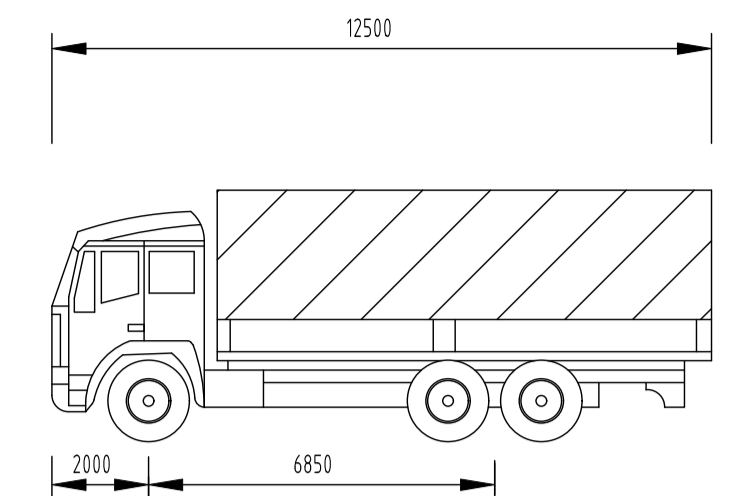
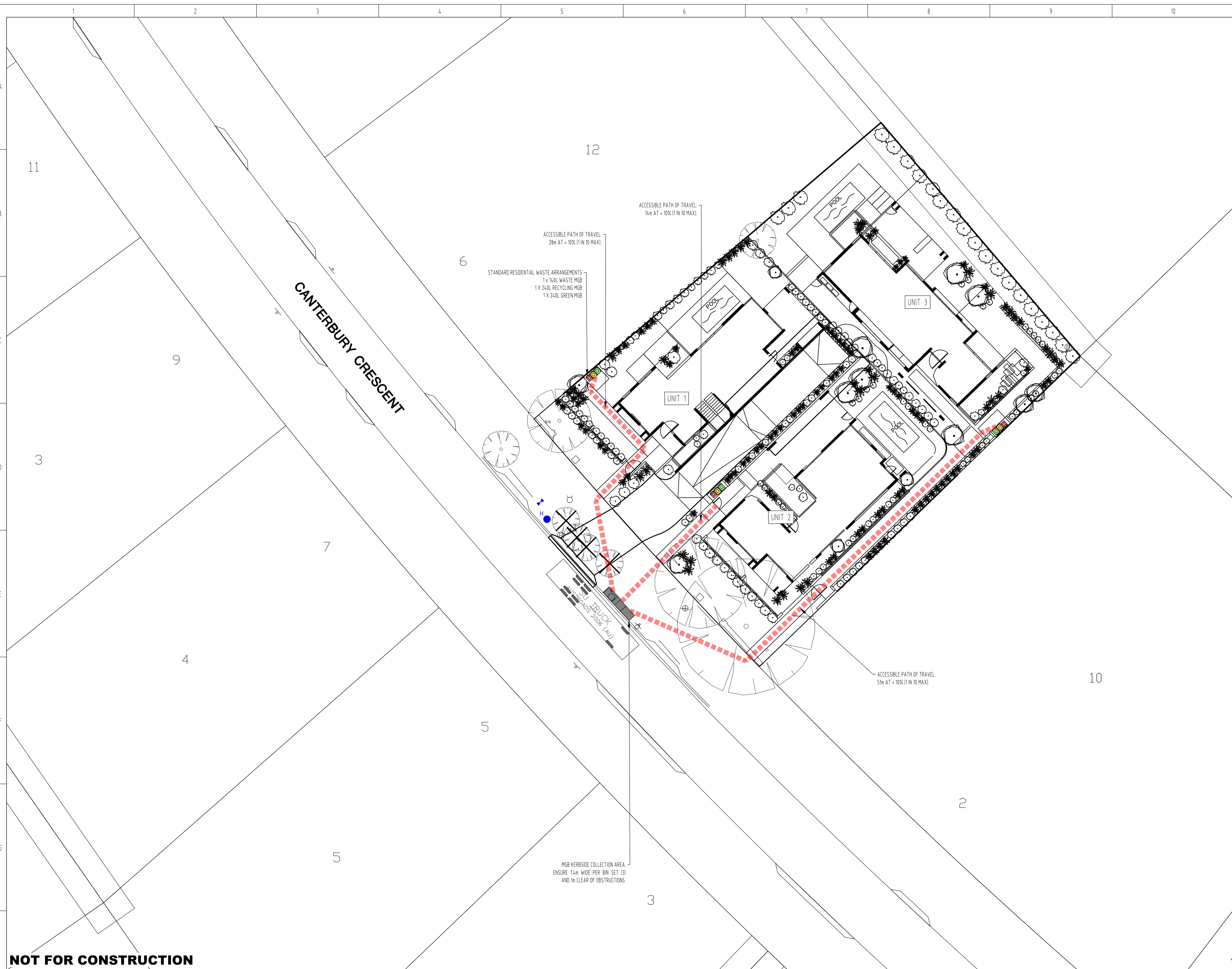
REV	REVISION	DATE	DESIGNED	DRAWN	APPROVED	REV	REVISION	DATE	DESIGNED	DRAWN	APPROVED	DEVELOPER
A	FOR DEVELOPMENT APPLICATION	18.03.2026	RI	RI	LK	F						
B						G						
C						H						
D						I						
E						J						

PROJECT: NJEGOSA POPOVICH
PROPOSED MULTI UNIT DEVELOPMENT

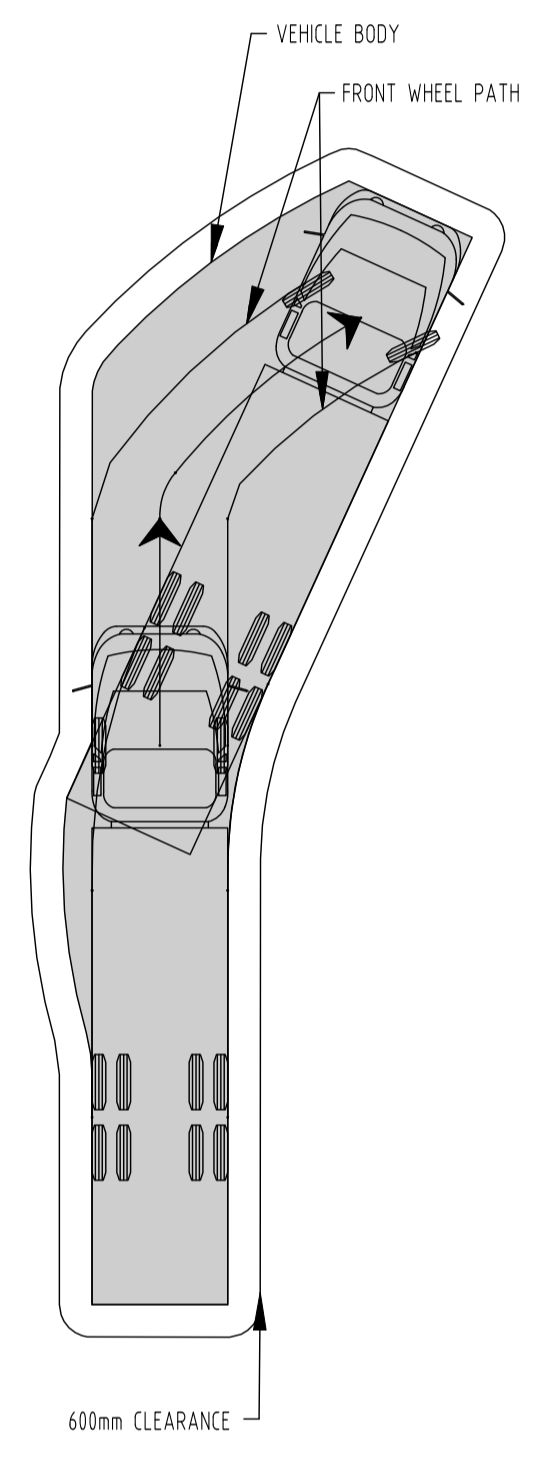
SCALE: AS SHOWN
DATE: 18.03.2026
PROJECT No: 25-1010
REVISION: A
DRAWING No: C08

SITE ADDRESS: BLOCK 11 SECTION 3 DEAKIN
 4 CANTERBURY CRESCENT
 DEAKIN

DRAWING TITLE: STORMWATER MANAGEMENT PLAN



12.5m WASTE VEHICLE
N.T.S



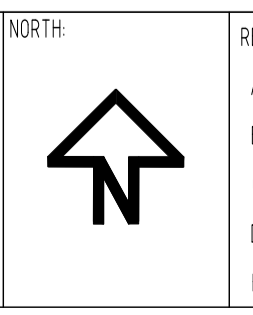
NOT FOR CONSTRUCTION

ACT CONSULTING ENGINEERS
CIVIL • STRUCTURAL • HYDRAULIC

5 TORRENS STREET BRADDON ACT 2612
WWW.ACTCE.COM.AU • OFFICE@ACTCE.COM.AU • 081 410 8611

0m 2 4 6 8 10
1:200 @A1 1:400 @A3

Use written dimensions only. This drawing, and the information contained within, is copyright to ACT Consulting Engineers Pty Ltd. Using or copying this drawing, in part or whole, without the prior consent of ACT Consulting Engineers Pty Ltd may result in legal action. © ACT Consulting Engineers Pty Ltd



REV	REVISION	DATE	DESIGNED	DRAWN	APPROVED	REV	REVISION	DATE	DESIGNED	DRAWN	APPROVED
A	FOR DEVELOPMENT APPLICATION	18.03.2026	RI	RI	LK	F					
B						G					
C						H					
D						I					
E						J					

DEVELOPER: NJGOSA POPOVICH
BUILDER: NTA

PROJECT: PROPOSED MULTI UNIT DEVELOPMENT

SITE ADDRESS: BLOCK 11 SECTION 3 DEAKIN
4 CANTERBURY CRESCENT
DEAKIN

SCALE: AS SHOWN	DATE: 18.03.2026	DRAWING No: C10
PROJECT No: 25-1010	REVISION: A	
DRAWING TITLE: WASTE COLLECTION PLAN		

TABLE 3.3 SUBMISSION REQUIREMENTS FOR MGBS ALLOCATED TO EACH INDIVIDUAL DWELLING AND KERBSIDE COLLECTION FOR MULTI-UNIT RESIDENTIAL DEVELOPMENTS

NUMBER	SUBMISSION REQUIREMENT	SUBMISSION RESPONSE
R1	EACH DEVELOPMENT APPLICATION MUST INCLUDE A COMPLETED COPY OF ALL RELEVANT PARTS OF THE WRMP (SEE APPENDIX 10).	WRMP HAS BEEN COMPLETED
R2	TCCS SUBMISSION DOCUMENTS MUST INCLUDE PLANS, ELEVATIONS, SECTIONS AND WRITTEN DESCRIPTIONS OR SPECIFICATIONS, AS APPLICABLE, SHOWING	KERBSIDE COLLECTION AS PER DWG C10
R2.1	- TABULATED WASTE AND RECYCLING GENERATION RATES PER DWELLING SIZE (BEDROOMS) IN ACCORDANCE WITH TABLE 7.1.	3 TOWNHOUSES - EACH WITH THEIR OWN MGB SET
R2.2	- THE LOCATION AND DIMENSIONS OF INDIVIDUAL WASTE AND RECYCLING AND GREEN WASTE STORAGE AREAS TO ACCOMMODATE THE TERRITORY-PROVIDED WASTE AND RECYCLING AND GREEN MGBS, WITH TABULATED CALCULATIONS TO DEMONSTRATE THE ADEQUACY OF THIS SPACE.	KERBSIDE COLLECTION AS PER DWG C10
R2.3	- THE PATH OF TRAVEL FOR MOVING MGBS FROM INDIVIDUAL WASTE AND RECYCLING AND GREEN WASTE STORAGE AREAS TO THE DESIGNATED COLLECTION POINT INDICATING DIMENSIONS AND CLEARANCES.	KERBSIDE COLLECTION AS PER DWG C10
R2.4	- THE LOCATION OF THE DESIGNATED COLLECTION POINT, DIMENSIONS OF THE AVAILABLE KERB FRONTAGE FOR THE DEVELOPMENT, CLEARANCES TO STREET TREES AND THE INDICATIVE MGB PRESENTATION LAYOUT TO ENSURE SUFFICIENT SPACE.	KERBSIDE COLLECTION AS PER DWG C10

NOT FOR CONSTRUCTION



Use written dimensions only. This drawing, and the information contained within, is copyright to ACT Consulting Engineers Pty Ltd. Using or copying this drawing, in part or whole, without the prior consent of ACT Consulting Engineers Pty Ltd may result in legal action. © ACT Consulting Engineers Pty Ltd

NORTH	REV	REVISION	DATE	DESIGNED	DRAWN	APPROVED	REV	REVISION	DATE	DESIGNED	DRAWN	APPROVED	DEVELOPER	PROJECT	SITE ADDRESS	SCALE	DATE	DRAWING No.	
	A	FOR DEVELOPMENT APPLICATION	18.03.2026	RI	RI	LK	F						NJGOSA POPOVICH	PROPOSED MULTI UNIT DEVELOPMENT	BLOCK 11 SECTION 3 DEAKIN 4 CANTERBURY CRESCENT DEAKIN	AS SHOWN	18.03.2026	C11	
	B						G						BUILDER						
	C						H												
	D						I												
E						J													
																DRAWING TITLE		WASTE COLLECTION DETAILS	

