
Visual Tree Assessment and Tree Management Plan

**Australian Institute of Sport
26 Leverrier Street Bruce Belconnen ACT
Block 26 Section 8 Belconnen ACT**



**9 April 2026
Prepared by Duncan MacLennan**

Project Details

Site Address	26 Leverrier Street, Bruce, Belconnen, ACT.
Client	Ms Jayne Garzotto, Australian Sports Commission
Contact	0413 877 292
Email	Jayne.garzotto@ausport.gov.au
Canopy contacts	Kate Ross Tel: 02-6161 1800 trees@canopygroup.com.au
	Duncan MacLennan (Dip. Arboriculture, Assoc. Dip. Horticulture, Dip. Agriculture, MPA) Tel: 0410 481 262 consulting@canopygroup.com.au
Version	1.1 - 9/04/2026

Important Notice

This document can only be used for the stated purpose in this report unless written agreement is provided by Canopy Tree Experts in advance.

There is no obligation to maintain the confidentiality of any such information which was known to you without restriction prior to receipt of this document as evidenced by written business records; which becomes publicly known through no fault of yours; or which is rightfully received by you from a third party without restriction.

If there are any concerns, questions, or issues regarding this notice, please contact Duncan MacLennan.

© Copyright Canopy Tree Experts Pty. Ltd. 2026 ABN 99 688 545 673 | ACN 688 545 673

Contents

1	Summary	4
2	Methodology	4
3	Tree data and assessments.....	4
3.1	Tree assessment table.....	5
4	Discussion	7
4.1	Trees to be removed.....	7
5	Tree protection plan	7
5.1	Protective fencing	8
5.2	Irrigation of exotics to be retained	8
5.3	Root pruning	8
5.4	Excavation within a tree’s tree protection zone	8
5.5	Activities prohibited in tree protection zones	9
5.6	Other measures to protect trees to be retained	9
5.8	Plan 1 - Location of trees with protective fencing required during demolition.....	10
6	Limitations	11
7	Appendix A – Plans used in this report.....	12
8	Appendix B - Glossary.....	13

1 Summary

Canopy Tree Experts has been engaged by the Australian Sports Commission (ASC) to prepare a visual tree report for 86 trees on Block 26 Section 8, Bruce, Belconnen as part of its works application for the demolition phase of the ASC Podium Project. This report includes a tree management plan for trees to be retained and documents how they will be protected during the demolition phase of the project.

The trees were assessed on 24 and 25 March 2026 at which time all of the data was collected.

Of the 89 trees on site it is proposed 49 be removed to enable construction of a new high performance testing and training facility. It is proposed 40 trees on the site be retained and protected. Providing the tree protection plan in this report is implemented the 40 trees to be retained trees will recover from any stress caused by the works.

2 Methodology

The trees detailed in this report were assessed by Duncan MacLennan (AQF level 5 consulting arborist).

A visual tree assessment is a systematic inspection of a tree for indicators of structural defects that may pose a risk due to failure. The visual tree assessment level 2 (Arboriculture Australia MIS 501) conducted at the AIS is a thorough ground based assessment. No invasive testing or aerial inspection was conducted.

The report includes parts of the plans provided by the ASC. Full copies of the plans used are provided at [Appendix A](#).

The report documents and assess each tree including the following information:

1. Common name
2. Genus and species
3. Health including useful life expectancy
4. Structural integrity (excluding a risk assessment)
5. Size including height, canopy, trunk and tree protection zone
6. Any other relevant observations (e.g. heritage status).

3 Tree data and assessments

The table below details all of the data collected on site as well as the assessment of each tree's health and structural integrity.

3.1 Tree assessment table.

Australian Institute of Sport		Assessment of trees	DATE: 24 and 25 March 2026												
TREE NUMBER	BOTANICAL NAME	COMMON NAME	DSH (m)	DRC (m)	TPZ (m)	HEIGHT (m)	CANOPY SPREAD (m)				HEALTH	STRUCTURE	ULE (years)	COMMENTS	
							N	S	E	W					
254	<i>Pyrus calleryana</i>	Callery Pear	0.2	0.25	2.4	10	2.5	3.0	3.0	3.0	Good	Good	20+		
252	<i>Pyrus calleryana</i>	Callery Pear	0.18	0.2	2.16	10	2.0	2.5	2.5	3.0	Good	Good	20+		
1	<i>Ulmus minor</i> 'Variegata'	Silver Elm	0.68	0.77	8.16	15	6.0	7.0	6.0	7.0	Good	Good	20+		
2	<i>Gleditsia triacanthos</i>	Honey Locust	0.34	0.38	4.08	12	3.0	5.0	8.0	4.0	Fair	Fair	10-15	Minor dead wood to 50mm.	
3	<i>Ulmus minor</i> 'Variegata'	Silver Elm	0.52	0.56	6.24	15	5.0	5.0	6.0	7.0	Good	Good	20+		
362	<i>Gleditsia triacanthos</i>	Honey Locust	0.24	0.28	2.88	9	5.0	4.0	5.0	4.0	Good	Good	20+		
363	<i>Gleditsia triacanthos</i>	Honey Locust	0.31	0.35	3.72	9	7.0	4.0	7.0	2.5	Good	Fair	20+	Suppressed on west side.	
364	<i>Lagerstromia indica</i>	Crepe Myrtle	0.17 / 0.16	0.3	2.76	9	4.0	3.5	3.5	3.5	Good	Good	20+		
365	<i>Ulmus minor</i> 'Variegata'	Silver Elm	0.65	0.71	7.8	14	5.0	6.0	6.0	5.0	Good	Good	20+		
146	<i>Gleditsia triacanthos</i>	Honey Locust	0.4	0.41	4.8	13	8.0	8.0	8.0	5.0	Good	Fair	15-20	Accute trunk union at 2m above ground.	
148	<i>Ulmus minor</i> 'Variegata'	Silver Elm	0.56	0.63	6.72	14	6.0	6.0	6.0	6.0	Good	Good	20+		
150	<i>Gleditsia triacanthos</i>	Honey Locust	0.31	0.34	3.72	12	5.0	1.0	4.0	2.0	Fair	Failed	10-15	Competing with trees around it and suppressed on south and west.	
152	<i>Ulmus minor</i> 'Variegata'	Silver Elm	0.61	0.72	7.32	14	5.0	5.0	5.0	5.0	Good	Good	20+		
115	<i>Lagerstromia indica</i>	Crepe Myrtle	0.08	0.1	0.96	3.5	1.5	1.5	1.5	1.5	Good	Good	20+		
118	<i>Lagerstromia indica</i>	Crepe Myrtle	0.08	0.1	0.96	3.5	1.5	2.0	2.0	1.5	Good	Good	20+		
121	<i>Lagerstromia indica</i>	Crepe Myrtle	0.1	0.14	1.2	3	1.0	1.0	1.0	1.0	Good	Good	20+		
124	Tree not there.				0									Tree not there.	
127	<i>Lagerstromia indica</i>	Crepe Myrtle	0.1	0.15	1.2	3	1.5	1.0	1.5	1.5	Good	Good	20+		
739	<i>Betula pendula</i>	Silver Birch	0.13	0.2	1.56	10	2.0	3.0	3.5	1.0	Good	Good	20+		
740	<i>Betula pendula</i>	Silver Birch	0.22	0.33	2.64	11	2.0	3.5	3.5	3.0	Good	Good	20+	Slight lean to south.	
864	<i>Betula pendula</i>	Silver Birch	0.27	0.37	3.24	12.5	3.0	4.0	2.5	3.0	Good	Good	20+		
862	<i>Betula pendula</i>	Silver Birch	0.19	0.28	2.28	12.5	3.0	1.5	2.0	3.0	Good	Good	20+		
860	<i>Gleditsia triacanthos</i>	Honey Locust	0.18	0.25	2.16	8	3.0	3.0	2.0	3.0	Good	Good	20+		
853	<i>Betula pendula</i>	Silver Birch	0.31	0.44	3.72	12	3.0	4.0	2.0	3.5	Good	Good	20+		
854	<i>Betula pendula</i>	Silver Birch	0.3	0.42	3.6	13	3.5	4.0	4.0	2.5	Good	Good	20+		
857	<i>Betula pendula</i>	Silver Birch	0.31	0.43	3.72	12	2.0	5.0	4.0	3.0	Good	Good	20+		
858	<i>Gleditsia triacanthos</i>	Honey Locust	0.28	0.32	3.36	11	4.0	6.0	4.0	6.0	Good	Good	20+		
987	Tree not found														
996	<i>Hakea salisifolia</i>	Willow Hakea	0.35/0.36	0.71		9	2.0	3.0	4.5	0.0	Fair	Fair	5-10	Rot in trunk at base.	
766	<i>Casuarina cunninghamiana</i>	River She-oak	0.22	0.29	2.64	9	1.0	3.5	3.0	2.0	Fair	Fair	10-15	Suppressed by Tree 763.	
763	<i>Casuarina cunninghamiana</i>	River She-oak	0.64	0.85	7.68	13	6.0	6.0	7.0	6.0	Good	Good	20+		
334	<i>Fraxinus oxycarpa</i> 'Raywood'	Claret Ash	0.35	0.44	4.2	10	5.0	0.0	4.0	3.0	Good	Fair	20+		
184	<i>Magnolia grandiflora</i>	Southern Magnolia	0.14	0.2	1.68	8.5	2.5	2.5	2.0	2.0	Fair	Good	20+		
341	<i>Fraxinus oxycarpa</i> 'Raywood'	Claret Ash	0.9	0.98	10.8	14	9.0	9.0	9.0	9.0	Good	Good	20+	Minor dead wood to 250mm.	
453	<i>Fraxinus oxycarpa</i> 'Raywood'	Claret Ash	0.74	0.88	8.88	14	7.5	5.0	7.5	5.0	Good	Good	20+		
452	<i>Ulmus procera</i>	English Elm	0.46	0.5	5.52	10.5	4.0	5.0	2.0	5.0	Good	Good	20+		
450	<i>Ulmus procera</i>	English Elm	0.55	0.63	6.6	11	6.0	4.0	4.0	4.0	Good	Good	20+	Minor elm leaf beetle damage.	
447	<i>Ulmus procera</i>	English Elm	0.49	0.52	5.88	10.5	4.0	5.0	4.0	4.0	Good	Good	20+	Minor elm leaf beetle damage.	
441	<i>Ulmus procera</i>	English Elm	0.4	0.47	4.8	11	4.5	4.0	4.0	4.0	Good	Good	20+		
398	Tree not there.													Tree not there.	
399	<i>Ulmus glabra</i> 'Lutescens'	Golden Elm	0.07	0.12	0.84	3	1.0	1.0	1.0	1.0	Good	Good	20+		
400	<i>Ulmus glabra</i> 'Lutescens'	Golden Elm	0.08	0.13	0.96	3	1.0	1.0	1.0	1.0	Good	Good	20+		
401	<i>Ulmus glabra</i> 'Lutescens'	Golden Elm	0.1	0.12	1.2	4.5	1.5	1.5	1.5	1.5	Good	Good	20+		
402	<i>Ulmus glabra</i> 'Lutescens'	Golden Elm	0.18	0.22	2.16	6	3.0	3.0	3.0	3.0	Good	Good	20+	Moderate elm leaf beetle damage.	

449	<i>Ulmus procera</i>	English Elm	0.29/0.33	0.53	5.28	10	4.0	4.0	4.0	4.0	Good	Good	20+	
947	<i>Ulmus procera</i>	English Elm	0.29/0.27	0.44	4.8	12	4.0	5.0	4.0	4.0	Good	Good	20+	
946	<i>Ulmus procera</i>	English Elm	0.41	0.53	4.92	12.5	3.0	5.0	4.0	4.0	Good	Good	20+	Minor elm leaf beetle damage.
945	<i>Ulmus procera</i>	English Elm	0.44	0.52	5.28	13.5	3.0	3.0	6.0	5.0	Good	Good	20+	
878	<i>Casuarina cunninghamiana</i>	River She-oak	0.6	0.76	7.2	13.5	6.0	6.0	6.0	4.0	Good	Good	20+	
877	<i>Casuarina cunninghamiana</i>	River She-oak	0.35	0.45	4.2	13.5	3.0	3.0	2.0	2.0	Good	Good	20+	
876	<i>Casuarina cunninghamiana</i>	River She-oak	0.35	0.48	4.2	13	5.0	4.0	3.0	3.0	Good	Good	20+	
875	<i>Casuarina cunninghamiana</i>	River She-oak	0.32	0.45	3.84	11	-	-	-	-	Dead	Failed	0-2	Tree dead.
784	<i>Casuarina cunninghamiana</i>	River She-oak	0.36	0.46	4.32	14.5	7.0	3.0	3.0	2.0	Good	Good	20+	
781	<i>Casuarina cunninghamiana</i>	River She-oak	0.35	0.51	4.2	13	7.0	4.0	2.0	5.0	Good	Good	20+	
778	<i>Casuarina cunninghamiana</i>	River She-oak	0.32	0.45	3.84	14	5.5	4.0	3.0	3.0	Good	Fair	15-20	
775	<i>Casuarina cunninghamiana</i>	River She-oak	0.42	0.55	5.04	14	7.0	6.0	3.0	5.0	Good	Fair	20+	
772	<i>Casuarina cunninghamiana</i>	River She-oak	0.64	0.75	7.68	14	7.0	6.0	3.0	7.5	Good	Good	20+	
1022	Stump of tree removed.				0									
1014	<i>Callistemon viminalis</i>	Weeping Bottlebrush	0.11/0.2/0.2/0.15	0.36	4.08	3.5	2.5	2.5	2.5	2.5	Good	Good	20+	
4	<i>Callistemon viminalis</i>	Weeping Bottlebrush	0.16/0.17	0.38	2.76	5	2.5	4.0	3.0	1.0	Good	Good	20+	
5	<i>Callistemon viminalis</i>	Weeping Bottlebrush	0.12/0.14/0.15	0.4	2.88	5	3.0	3.5	3.0	3.0	Good	Good	20+	
6	<i>Callistemon viminalis</i>	Weeping Bottlebrush	0.15/0.16/0.2	0.6	3.6	6	4.0	4.0	4.0	4.0	Good	Good	20+	
7	<i>Callistemon viminalis</i>	Weeping Bottlebrush	0.06/0.07	0.18	2	2.5	1.0	0.5	0.0	1.0	Fair	Poor	2-5	Suppressed by Tree 6.
825	<i>Casuarina cunninghamiana</i>	River She-oak	0.51	0.71	6.12	16	6.0	6.0	3.0	3.0	Good	Good	20+	
824	<i>Ulmus parvifolia</i>	Chinese Elm	0.58	0.71	6.96	14.5	9.0	9.5	7.5	10.0	Good	Good	20+	
8/415	<i>Casuarina cunninghamiana</i>	River She-oak	0.55	0.76	6.6	14	6.0	6.0	7.0	3.0	Good	Good	20+	Minor dead wood to 50mm.
9/420	<i>Casuarina cunninghamiana</i>	River She-oak	0.38	0.55	4.56	14	5.0	4.0	5.0	3.0	Good	Good	20+	Small hanging branch in canopy.
10/429	<i>Casuarina cunninghamiana</i>	River She-oak	0.45	0.6	5.4	14	4.0	5.0	5.0	3.0	Good	Good	20+	
11/435	<i>Casuarina cunninghamiana</i>	River She-oak	0.51	0.68	6.12	14.5	5.0	6.5	4.5	3.0	Fair	Good	15-20	Minor dead wood to 60mm. Loss of cambium on both east and west side of tree amounting to 20% loss.
12443	<i>Casuarina cunninghamiana</i>	River She-oak	0.41	0.57	4.92	13	5.0	5.5	5.0	3.0	Good	Good	20+	
13/455	<i>Casuarina cunninghamiana</i>	River She-oak	0.38	0.59	4.56	16	6.0	4.0	3.5	3.0	Good	Good	20+	
14/467	<i>Casuarina cunninghamiana</i>	River She-oak	0.37/0.35/0.37	0.75	7.56	16	5.0	6.0	6.0	3.0	Good	Good	20+	
15/471	<i>Casuarina cunninghamiana</i>	River She-oak	0.42	0.55	5.04	16	5.0	7.5	3.0	3.0	Good	Good	20+	
16/475	<i>Casuarina cunninghamiana</i>	River She-oak	0.77	0.97	9.24	16	8.5	8.0	3.0	6.5	Good	Good	20+	
157	<i>Eucalyptus melliodora</i>	Yellow Box	0.37/0.45/0.46	0.84	8.88	14	9.0	4.0	6.0	9.5	Good	Fair	20+	
137	<i>Eucalypt</i> sp.	Gum Tree	0.74	0.93	8.88	17	10.0	8.0	6.0	9.0	Good	Good	20+	
17	<i>Eucalyptus melliodora</i>	Yellow Box	0.23	0.26	2.76	6	2.0	2.0	2.0	2.0	Good	Fair	20+	
108	<i>Eucalyptus sideroxylon</i>	Red Ironbark	0.92	1	11.04	19	6.5	10.0	8.5	6.0	Good	Fair	20+	Dual trunk from 1.7m.
82	<i>Eucalyptus melliodora</i>	Yellow Box	0.48/0.64	1.05	9.6	20	8.0	8.0	8.0	9.0	Good	Good	20+	
50	<i>Eucalyptus melliodora</i>	Yellow Box	0.45/0.7	0.92	9.96	15	6.5	9.5	8.0	8.0	Good	Good	20+	
18	<i>Eucalyptus sideroxylon</i>	Red Ironbark	0.56	0.75	6.72	13	7.0	3.0	7.0	3.0	Good	Fair	20+	Main leader removed in the past.
32	<i>Eucalyptus sideroxylon</i>	Red Ironbark	0.78	0.79	9.36	15	8.0	8.0	7.5	6.0	Good	Good	20+	Dual trunk from 1.5m.
13	<i>Eucalyptus melliodora</i>	Yellow Box	0.4	0.58	4.8	10	7.0	5.0	3.0	6.5	Good	Good	20+	
461	<i>Quercus palustris</i>	Pin Oak	0.38	0.49	4.56	14	3.0	3.0	4.0	3.5	Good	Good	20+	
626	<i>Eucalyptus melliodora</i>	Yellow Box	0.02	0.3	1.5	1.8	0.4	0.4	0.4	0.4	Good	Good	20+	
511	<i>Quercus palustris</i>	Pin Oak	0.43	0.55	5.16	14	3.0	3.0	7.0	7.0	Good	Good	20+	
547	<i>Quercus palustris</i>	Pin Oak	0.43	0.52	5.16	14	3.0	3.0	6.0	8.0	Good	Good	20+	Possum in tree.
580	<i>Quercus palustris</i>	Pin Oak	0.39	0.5	4.68	14	4.0	3.0	6.0	8.0	Good	Good	20+	
603	<i>Quercus palustris</i>	Pin Oak	0.58	0.73	6.96	14	4.0	6.0	8.0	8.0	Good	Good	20+	

4 Discussion

The tree assessment table above shows that most of the trees are in good health and structure. The trees in the courtyards of the athletes village and on the eastern side of the site are nearly all exotics whereas the trees on the northern and western sides are mostly natives.

The eucalypts on the western side of the site beside Leverrier Street are mostly in good condition. These trees will be beyond the hoarding to the west along Leverrier Street and will not require any additional protection as they are protected by coppice log barriers along Leverrier Street.

The Pin Oaks lining the driveway leading to Building 16 and 17 are closely planted and provide heavy shade along the footpath. These trees are to be retained and are all in good condition and a feature of the site. These trees will be within the hoarding and therefore will require protective fencing placed at the outer edge of their TPZ throughout the project.

The Elm trees lining the path on the eastern side of the site are a major feature and are to be retained. These trees will require great care and protection to help them through the demolition process and recover from the works due to their proximity to the building.

Trees 341, 334 and 453 (Claret Ash) are features near the buildings in the southeastern part of the site. These trees are to be retained and great care will be required to protect them during the demolition phase. An irrigation program will be required and mulching the TPZ of these trees will be important actions to maintain their condition.

There are a number of River She-oak on the north east and north west side of the site in two groups to be retained. It is not essential to irrigate these trees as they are well adapted to the climate. However they should be monitored throughout the project and if they show signs of stress such as dropping more leaves than normal then the site arborist may recommend an irrigation program.

4.1 Trees to be removed

The trees marked red in Plan 1 at 5.8 below are all to be removed to enable the development. There are a total of 47 trees to be removed including trees 13, 32, 18/66, 50, 82, 108, 184, 364, 137, 17, 824, 825, 1, 2, 3, 4, 5, 6, 7, 1014, 1018, 1022, 763, 766, 252, 254, 362, 363, 365, 121, 127, 115, 118, 146, 148, 150, 152, 739, 740, 996, 853, 854, 857, 858, 864, 860, and 862.

5 Tree protection plan

The tree management plan provided at 5.8 below is consistent with the Australian Standard 'AS 4970-2025 Protection of trees on development sites' and must be implemented to ensure the trees to be retained are protected and well cared for throughout the demolition phase of the project. In addition to the protective fencing shown on the plan a range of measures specified below must be implemented to maintain the health of the trees.

The appointment of a project arborist is a key part of ensuring those trees to be retained are protected and appropriately care for during and after the works. A project arborist can also assist the works contractor respond to tree related issues promptly thereby helping to reduce stoppages.

5.1 Protective fencing

The plan below at 5.8 shows the entire site including the location and number of each tree. The plan includes details of where protective fencing should be placed to help ensure the trees to be retained are not damaged. The alignment of the protective fencing is shown as a red dotted line on each plan. Protective fencing must be 1.8m high continuous steel mesh secured into concrete bases. The tree protection fencing must be covered in shade cloth with signs "TREE PROTECTION ZONE – NO ACCESS" fixed at regular intervals. All tree protection fencing must be placed before site establishment and retained until the completion of all works.

The location of required protective fencing for the Pin Oaks (Tree Nos.461, 511, 547, 580, 603) and a young Yellow Box (Tree 626) is shown in Plan 1 at 5.8 below. The final placement of the fencing can only occur after Tree 13 is removed.

Trees 441, 447, 449, 450, 452, 945, 946 and 947 are English Elms on the eastern side of the site that are to be retained. These trees' roots extend up to the foundations of the building that is to be demolished. The protective fencing should be placed as close to the building as possible and therefore over as much of the trees' tree protection zone (TPZ) as possible. Demolition machinery must not travel over the trees TPZ.

5.2 Irrigation of exotics to be retained

There are a total of 21 exotic trees to be retained including trees: 461, 511, 547, 580, 603, 334, 341, 453, 398, 399, 400, 401, 402, 441, 447, 449, 450, 452, 945, 946 and 947. These trees must all have an irrigation system installed to provide optimal moisture conditions for them during the works. As much of the trees TPZ should be irrigated as possible. The TPZ for each tree is specified in the table at 2.1 above. The TPZ measurement is the radius of the root system from the centre of the trunk to the outer edge.

The project arborist should specify the watering requirements as well as monitor and adjust them as required throughout the project.

5.3 Root pruning

When the roots of the trees to be retained are encountered they must be managed appropriately. If the roots are less than 40mm in diameter they can be cut with a sharp clean blade. If the roots are 40mm diameter or larger the project arborist should be consulted or assess them before any action is taken.

5.4 Excavation within a tree's tree protection zone

All excavation within the TPZ of a tree to be retained must be managed carefully. Where possible installing services using under-boring machinery is the preferred approach. If excavation must occur within a tree's TPZ it must be carried out by hydro-excavation. The personnel operating this equipment must be experienced in excavating around tree roots and use a fan shaped nozzle at a pressure of less than 1500psi. Operating the equipment with other nozzles or at higher pressure will remove the bark from the trees roots and damage them.

When roots are exposed and not covered with soil immediately they must be covered with two layers of hessian sheet which must be kept damp until the roots can be covered with soil again.

5.5 Activities prohibited in tree protection zones

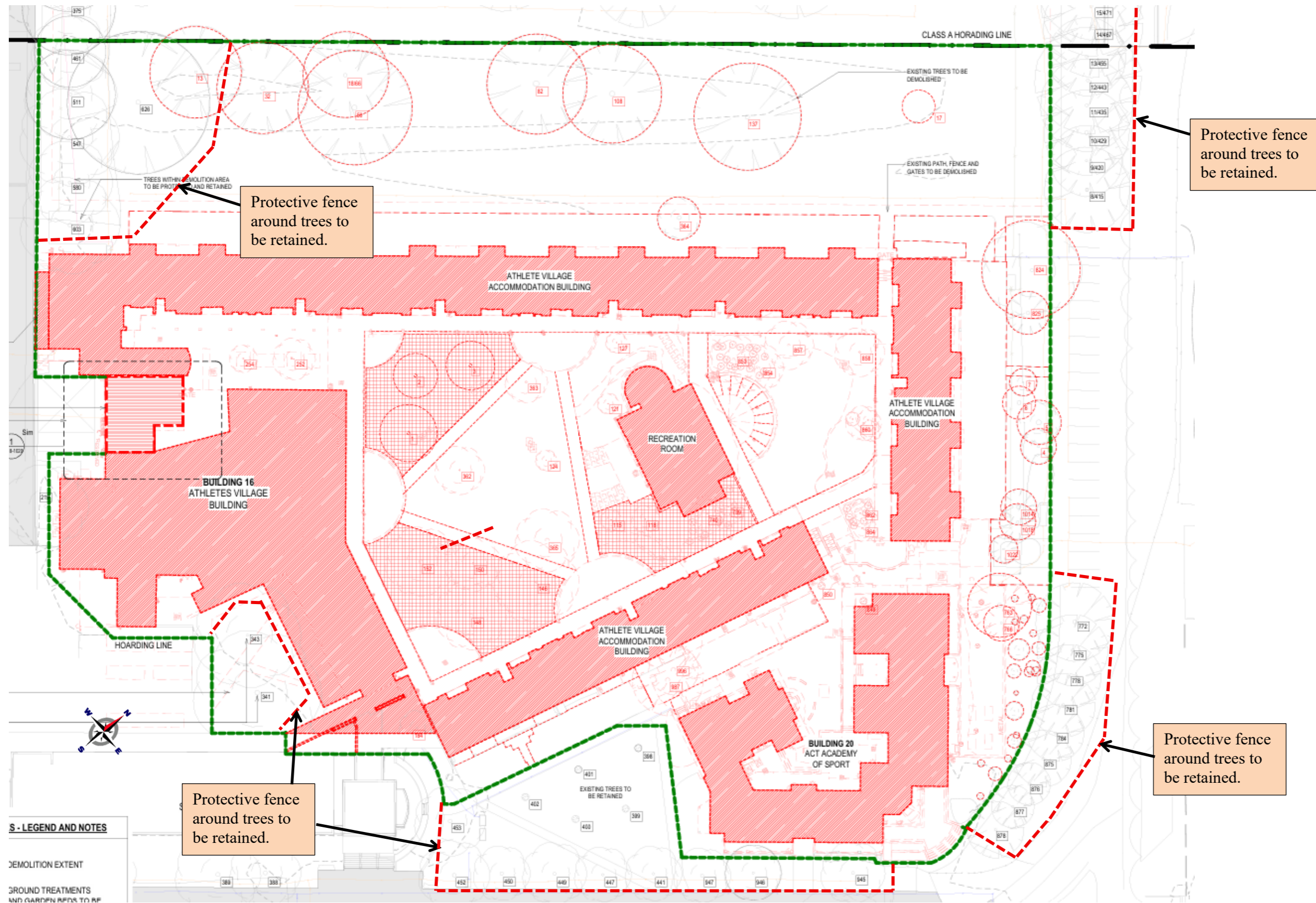
The activities that are **not permitted** within a tree's TPZ include:

- Storage of materials, equipment or machinery,
- Placement of waste bin and onsite toilets,
- Any activity that might compact the soil,
- At no time should chemicals or fuel be stored or disposed of in the TPZ of a tree.

5.6 Other measures to protect trees to be retained

- Where trees adjacent to work areas are at risk of damage install branch and/or trunk protection as specified by the project arborist. If branches are obstructing work an arborist must be used to assess whether they can be tied back or pruned and to carry out the work. All pruning must be conducted in accordance with the Australian Standard 'AS 4373-2007 Pruning of amenity trees'.
- Soil levels around trees must not be lowered and only a maximum of 50mm can be scrapped off by hand. Where the levels around trees are raised the material should be more porous/coarser than the soil below and should not exceed 150mm in depth.

5.8 Plan 1 - Location of trees with protective fencing required during demolition

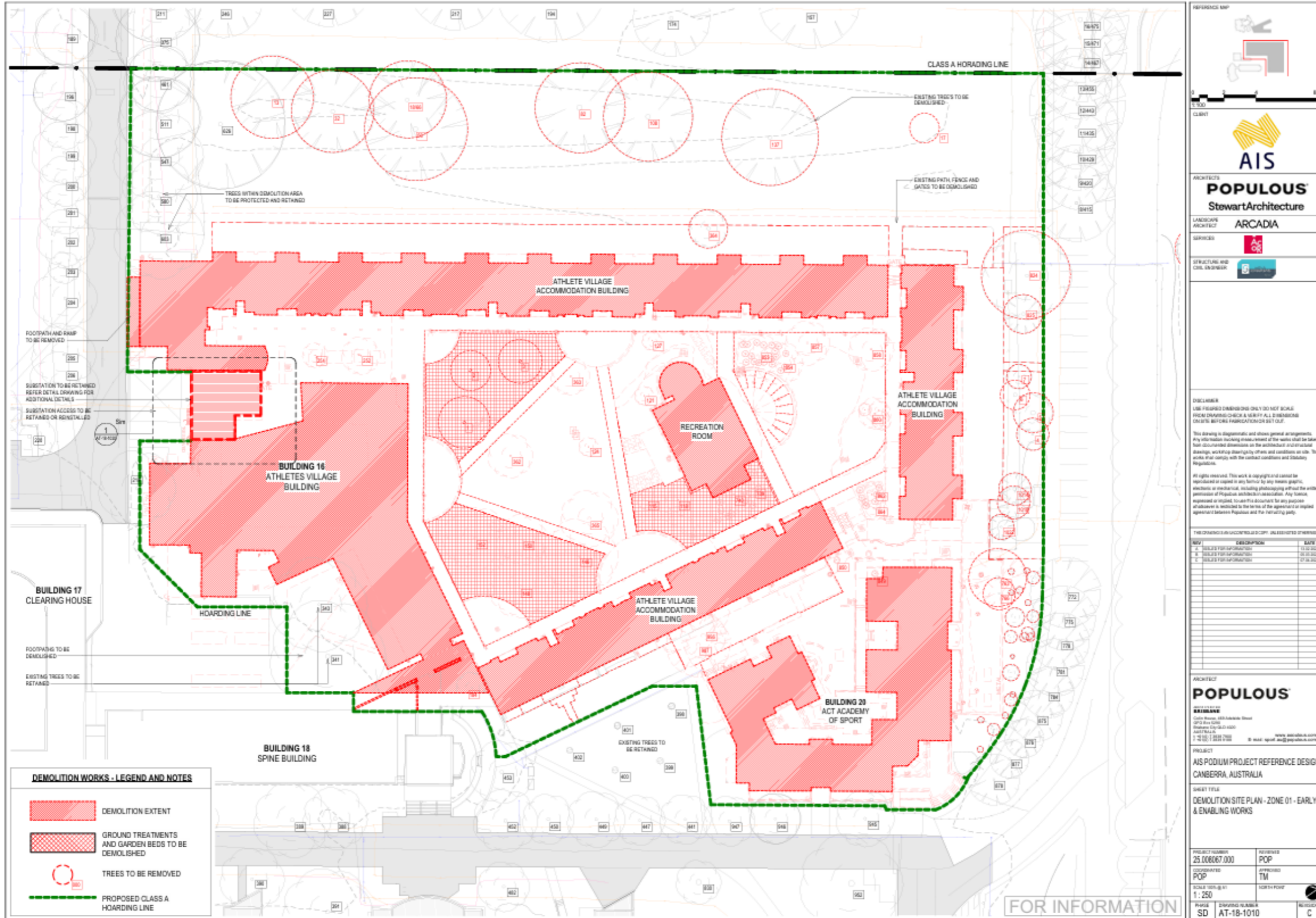


6 Limitations

The majority of trees have defects that may or may not be detectable without invasive diagnostic tooling methods. These defects could be from environmental, human or genetic factors and may be hazardous to people and property.

This report does not assess the safety of the trees on site or the risk of harm they present to people or physical assets. Where the author has observed the condition of a tree that may have potential safety issues they have recommended further assessment by a qualified arborist.

7 Appendix A - Plans used in this report



8 Appendix B - Glossary

Term	Description
Age Class	Sapling, juvenile, semi-mature, mature and over mature (veteran).
Botanical Name	Botanical name is the formal scientific name which conforms to the International Code of Nomenclature.
Canopy Spread	Diameter of the dripline of the tree's canopy - north, south, east & west from trunk.
Common Name	The common layman's name for a tree.
Diameter at Standard Height (DSH)	Diameter of the trunk or trunks at 1.4m above ground.
Diameter of Root Crown (DRC)	The diameter of the lowest point of the trunk just above the root buttress flare.
Health	General health of the tree – very good, good, fair, poor, failed.
Height	Estimated height of a tree, give or take 5% accuracy.
Live Foliage %	The percentage of noticeable live leaves in a tree's canopy.
SRZ	Structural root zone is an important area that must not be interfered with; containing zone of rapid growth and major transportation root area.
Structural Integrity	The ability of the tree to hold together under a load, in regard to weight, wind throw, weakened unions and diseases, without breaking excessively (measuring the tree's structural strength by means of visual bio-mechanics).
Total Root Zone in M²	The total root zone area of the tree in square metres.
Total Root Zone Incursion Allowed	The area that is allowed to be safely removed from the total tree root zone, providing the tree is in a fair or better condition.
TPF	Tree Protection Fencing.
TPZ	Tree Protection Zone is the area of the root zone of the tree's radius from the central trunk. Tree Protection Zone (DBH x12= TPZ radius).
Tree #	The tree's number, as shown on the diagrams and Site Plan.
Tree Status	Details whether the tree is protected, regulated or unregulated.
ULE	Useful Life Expectancy shows how many good years are left in the tree under normal circumstances. It is also an indicator of health and vigour of the tree.
Value Status	Recommendation whether to keep or remove the tree.
VTA	<p>Visual Tree Assessment.</p> <p>VTA Level 1 - Limited on-ground inspection – typically used for a large number of trees with the assessment being confined to the most severe factor and a limited range of targets.</p> <p>VTA Level 2 – Thorough ground-based assessment. Identification of structural defects while on the ground using simple equipment such as acoustic mallets, probes and binoculars. Well documented record of the assessment of each tree.</p> <p>VTA Level 3 - Aerial and/or invasive testing where a tree is climbed to get a better observation of the tree. Where drilling or coring may be required, often a very small drill is used.</p>