



Australian Government
National Capital Authority

CONSULTATION REPORT

WORKS APPROVAL 18983 and 18545

**INSTALLATION OF SAFETY SCREENS TO TWO BRIDGES OVER
PARKES WAY**

JULY 2013

PART 1 - INTRODUCTION	3
PART 2 - PUBLIC CONSULTATION REQUIREMENTS	3
2.1 National Capital Plan	3
2.2 Commitment to Community Engagement	3
PART 3 – SUMMARY OF PUBLIC CONSULTATION	4
3.1 The public consultation process	4
3.2 Submissions received, comments and response	5
PART 4 - CONCLUSION	5
Attachment A – Location plan	6
Attachment B - Canberra Times – public notice	7
Attachment C – Letter to residents	8

PART 1 - INTRODUCTION

Under the *Australian Capital Territory (Planning and Land Management) Act 1988*, the National Capital Authority (NCA) prepares and administers the National Capital Plan (the Plan) to ensure that Canberra and the Territory are planned and developed in accordance with their national significance.

The Plan sets out the broad planning framework for the Australian Capital Territory (ACT). Areas designated as having special characteristics of the National Capital are subject to detailed planning policies and guidelines.

Any building or structure, demolition, landscaping or excavation works in Designated Areas require the approval of the NCA. The NCA considers such proposals in the context of the relevant provisions of the Plan.

On 26 June 2013 the NCA received an application from SMEC on behalf of the ACT Government Territory and Municipal Services (TaMS) for the installation of safety screens to two bridges over Parkes Way (Edinburgh Avenue bridge and Acton pedestrian bridge). A map detailing the location of the proposal is at [Attachment A](#).

PART 2 - PUBLIC CONSULTATION REQUIREMENTS

2.1 National Capital Plan

Under the Plan, the requirements for public consultation apply, but are not limited to, certain residential developments, telecommunications facilities (that are not considered low impact) and amending or issuing an instrument under the Plan (including Development Control Plans).

2.2 Commitment to Community Engagement

The NCA's 'Commitment to Community Engagement (August 2011)' details how the NCA conducts consultation. The purpose is to achieve a greater level of consistency and transparency in the NCA's decision making process.

The Commitment to Community Engagement describes:

- the minimum requirements for consultation
- the timeframes for amendments to the Plan
- what is involved in preparing a new Development Control Plan
- the process for amending or issuing an instrument under the Plan
- the process by which WA applications, which are released for public consultation, will be assessed.

Part 2 (Consultation Protocol) of the NCA's Commitment to Community Engagement (August 2011) describes the consultation process for WA applications. The consultation protocol includes criteria for which an application will be assessed, in order to determine whether the application should be released for public notification or full public consultation.

For development applications, the NCA undertakes a risk assessment of each proposal against the assessment criteria set out in the Consultation Protocol. The public notification process will include information about the NCA's risk assessment of the proposal against the assessment criteria below.

1. What is the likelihood that the proposal will adversely affect existing public space and / or community amenity?
2. What is the likelihood that the proposal will adversely affect existing environmental, heritage or landscape values?
3. What is the likelihood that the proposal is discordant with the general development and amenity of the locality in terms of materials, finishes, scale, massing, design and quality?
4. What is the likelihood that the proposal is inconsistent with an existing Heritage Management Plan (HMP)? (If there is no HMP, this question is not applicable).

The combination of the likelihood and consequence from the criteria described in the above categorises an overall perceived risk into five ratings being 'negligible', 'low', 'significant', 'high' or 'extreme'. Works assessed as having an 'extreme' risk will be rejected.

Full public consultation for WAs will be required where the NCA's perceived risk rating is 'significant' or 'high', and also for any development where consultation is a mandatory requirement under the Plan.

When a WA application is lodged and consultation is required, the applicant is required to consult with the community and stakeholders. The NCA may stipulate specific requirements for consultation and, for higher perceived risk proposals, may undertake the consultation process itself.

The NCA may set aside the requirement to undertake full public consultation where:

- (a) previous consultation has been undertaken
- (b) for minor amendments to previously approved works
- (c) proposals are exempt, as demonstrated in the 'Commitment to Community Engagement (August 2011)'
- (d) the NCA determines it unnecessary and no stakeholders will be affected.

The Plan has specific requirements in relation to consultation for telecommunications facilities, in relation to any new towers, masts or monopoles.

The application for the installation of safety screens to the two bridges over Parkes Way was assessed as having a level of risk greater than 'low'. Therefore, the application was subject to full public consultation.

PART 3 – SUMMARY OF PUBLIC CONSULTATION

3.1 The public consultation process

The public consultation on the application was undertaken between 6 and 26 July 2013.

The consultation took the form of:

- On Saturday 6 July 2013, publishing a public notice in *The Canberra Times* detailing the proposed works and inviting submissions to be made to the NCA in relation to the proposal ([Attachment B](#)).
- Between 6 and 26 July 2013, publishing details of the proposal, including the applicant's plans and planning report on the NCA's website.

- Between 8 and 26 July 2013, four signs being installed on site (one at each end of both bridges).
- On 4 July 2013, the NCA sent notification letters to building owners and tenants of properties surrounding the bridges ([Attachment C](#))

3.2 Submissions received, comments and response

The NCA received no submissions in relation to the work approval applications.

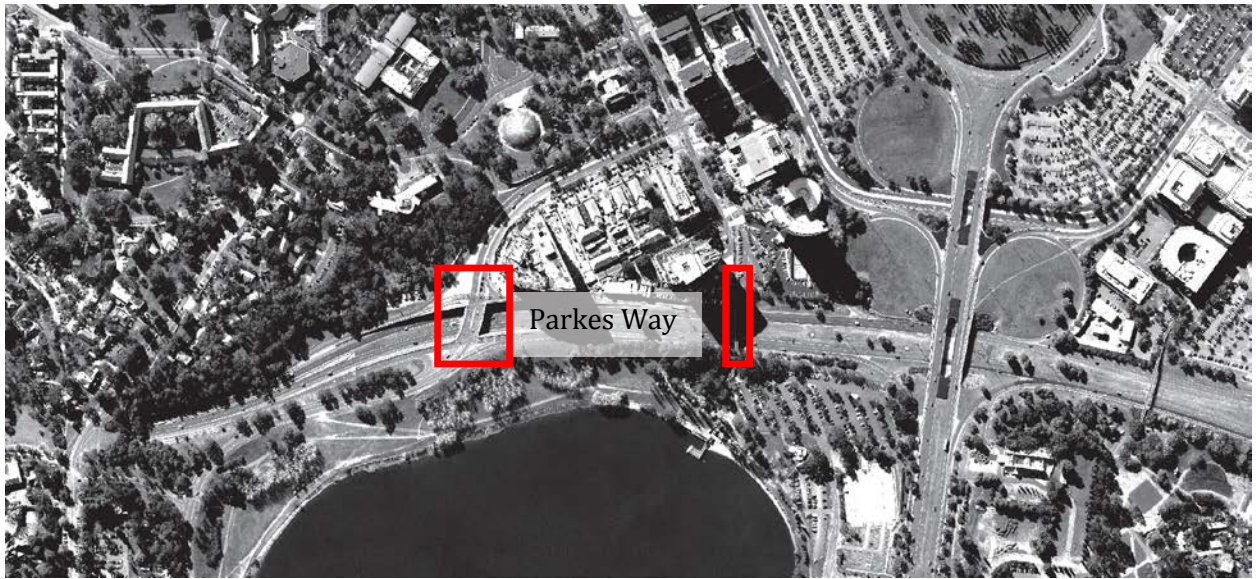
PART 4 - CONCLUSION

The NCA's consultation process was carried out in accordance with the Plan and the NCA's Commitment to Community Engagement (August 2011).

No submissions were received.

The applications have been assessed as being not inconsistent with the National Capital Plan, and the NCA delegate proposes to grant approval to the applications.

Attachment A – Location plan





Australian Government
National Capital Authority

WORKS APPROVAL

Installation of Safety Screens to Bridges over Parkes Way

The National Capital Authority (NCA) has received a works approval application from SMEC on behalf of the ACT Government Territory and Municipal Services Directorate (TaMS) for the installation of safety screens to two bridges over Parkes Way (Edinburgh Avenue and the Acton pedestrian bridge).

HAVE YOUR SAY

Information and plans for this application can be found at www.nationalcapital.gov.au/haveyoursay/

Comments on are invited and should be sent to: worksapproval@natcap.gov.au or GPO Box 373 Canberra ACT 2601 by COB Friday 26 July 2013.

All submissions, including names and addresses will be made publicly available at the NCA office and on the website, subject to approval in writing by the submitter, in accordance with the NCA's Commitment to Community Engagement.



For any questions please contact Carly Porreca on (02) 6271 2888.

Attachment C – Letter to residents



Australian Government
National Capital Authority

File No: 13/524; Job No: WA18545 and WA18983

Mr Gordon Lowe
Director of Planning
Molonglo Group
GPO Box 1565
CANBERRA ACT 2601

Dear Mr Lowe

Edinburgh Avenue and Pedestrian Bridge Over Parkes Way – Installation of Safety Screens

The National Capital Authority (NCA) has received a works approval application from SMEC on behalf of the ACT Government Territory and Municipal Services Directorate (TaMS) for the installation of safety screens to two bridges over Parkes Way (Edinburgh Avenue and the Acton pedestrian bridge).

The plans and supporting documentation on the proposal can be viewed on the NCA's website www.nationalcapital.gov.au/haveyoursay/

Please provide any written comments you may have on the proposal by close of business on Friday 26 July 2013 to worksapproval@natcap.gov.au or GPO Box 373, Canberra, ACT 2601.

All submissions, including names and addresses will be made publicly available at the NCA office and on the website subject to approval in writing by the submitter, in accordance with the NCA's Commitment to Community Engagement.

If you require any further information please contact Carly Porreca on 6271 2888 or email worksapproval@natcap.gov.au.

Yours sincerely

A handwritten signature in black ink, appearing to read 'N. Broughton'.

Natalie Broughton
Director, Development Assessment and Heritage

3 July 2013

Building the National Capital in the hearts of all Australians

T 02 6271 2888 | F 02 6273 4427 | www.nationalcapital.gov.au | email natcap@natcap.gov.au

Couriers & deliveries: Treasury Building, King Edward Terrace, Parkes ACT 2600 | Mailing: GPO Box 373 Canberra ACT 2601

ABN 75 149 374 427