

DUNROSSIL DRIVE

PINE TREE REPLACEMENT

THE NATIONAL CAPITAL AUTHORITY (NCA) IS UNDERTAKING A PROGRAM TO REPLACE THE PINE TREES ALONG DUNROSSIL DRIVE. MANY OF THE TREES ARE DEAD OR DYING, RESULTING IN WEAKENED OR FALLING TREES AND BRANCHES.

The trees will be removed in two stages. The first stage will be undertaken in April 2013 with the second stage scheduled for 2015/16. Tree replanting is to commence 12-18 months after each removal stage.

The pine tree replacement program has been developed in consultation with the adjacent land holders – Government House, Royal Canberra Golf Club and the ACT Government (Territory and Municipal Services and Land Development Agency).



REPLANTING FOR THE FUTURE

The replanting of Dunrossil Drive will retain the existing central avenue of Elm trees, surrounded by a second avenue of mixed trees (Pine and Oak), with an evergreen tree backdrop. The backdrop will be formed by creating a third outer avenue using an evergreen species of Oak and then replanting the Pine plantation on the outside of the avenue.

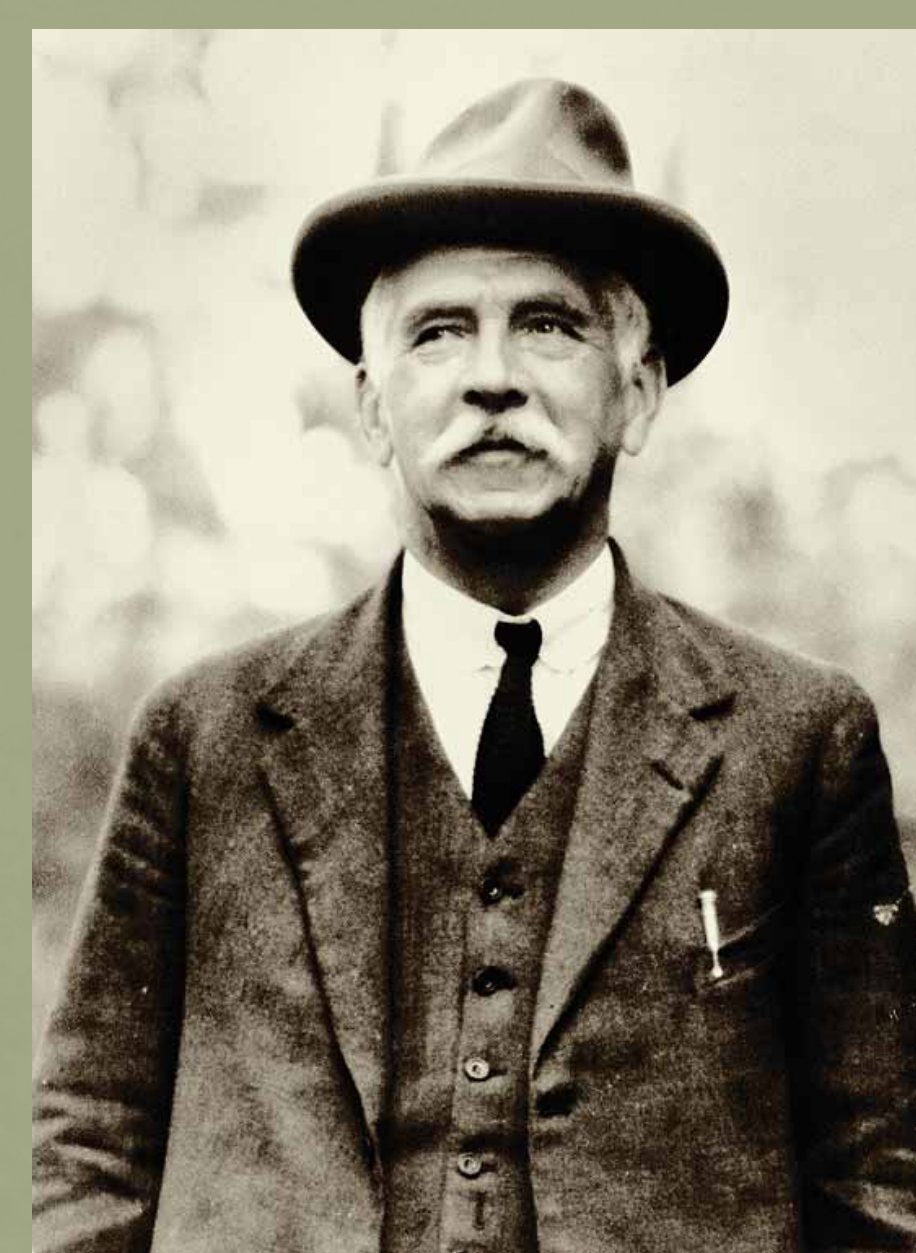
The third avenue of evergreen Oak trees will create greater consistency along the avenue, while increasing the separation between the Pine trees and the road. This increase in distance between the road and Pine trees is intended to reduce the risk associated with Pine tree failure and also allow for more frequent replacement of the Pine trees without affecting the vista from the road.



PLANNING FOR TREE REPLACEMENT

Planning for the tree replacement commenced in 2009 when the NCA prepared a referral under the *Environment Protection and Biodiversity Conservation Act 1999* for the removal of trees on National land. In 2010 the NCA undertook a community consultation session to discuss the trees on Dunrossil Drive and surrounding lands and the development of a draft replacement strategy. A Heritage Impact Statement found that the tree removal and replacement program was to have slight or no impact on the areas affected and was consistent or broadly consistent with the relevant heritage management plans.

In 2011 the Department of Sustainability Environment Water Populations and Communities (DEWSPaC) approved the referral for tree removal on National land and requested that a tree replacement strategy for Dunrossil Drive be completed. A tree replacement strategy was prepared in consultation with adjacent land holders and subsequently approved by DSEWPaC in 2012.

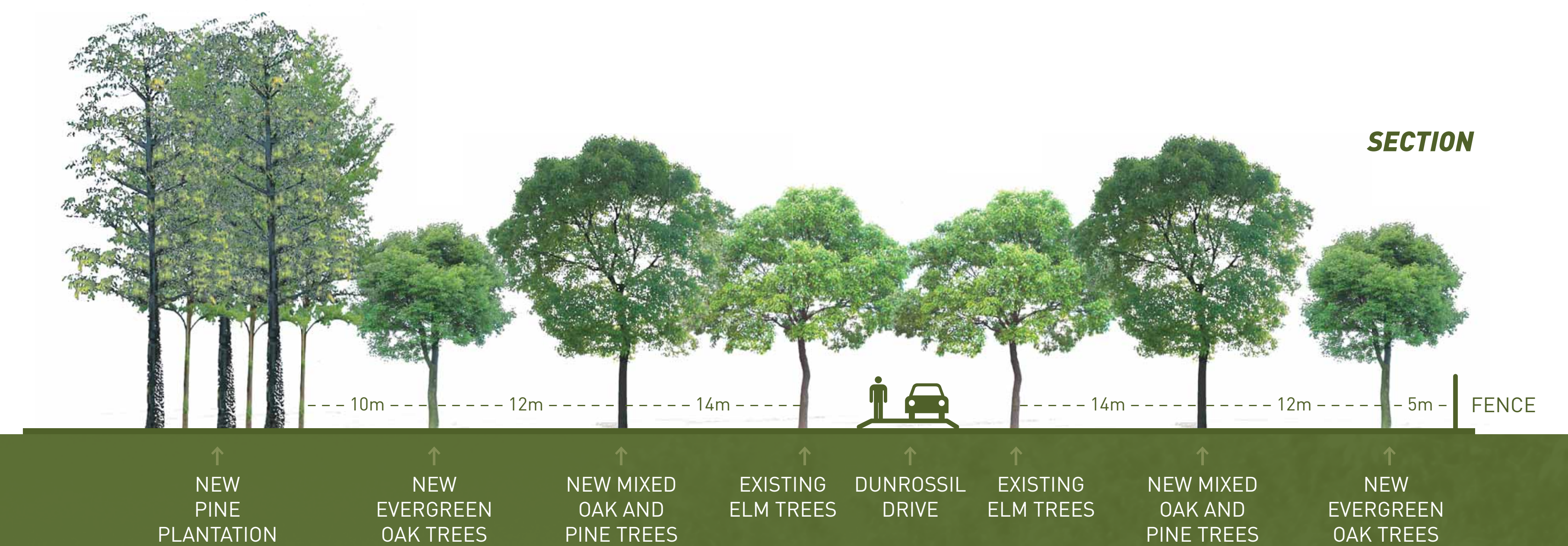


TREE PLANTING IN THE AREA

Dunrossil Drive is one of the great landscapes of Canberra. The journey along the gentle sloping drive under the canopy of mature Elm trees, with the backdrop of tall dark green Pine trees, is impressive and enjoyable. The grand avenue we have today is the product of a deliberate planting scheme developed and implemented by Charles Weston, who was responsible for the early afforestation of Canberra.

The drive is a long, thin area of land between the Cotter Road and Government House. The road comprises a row of Elm trees either side of the road way with Pine trees beyond. It is possible that the planting of Elm trees occurred as early as 1918. The rows of Pine trees were planted in 1926 and 1927. The Pine trees provide an important back-drop to the Elm trees.

Other trees along the road include the remnants of an old row of False Acacia between the Elm and Pines trees. There are also mixed stands of exotic evergreen and deciduous species at the southwest side near Cotter Road and the northern end near the gates, to Government House.



FOR FURTHER INFORMATION PLEASE CALL
6271 2888 OR EMAIL NATCAP@NATCAP.GOV.AU



Australian Government
National Capital Authority