

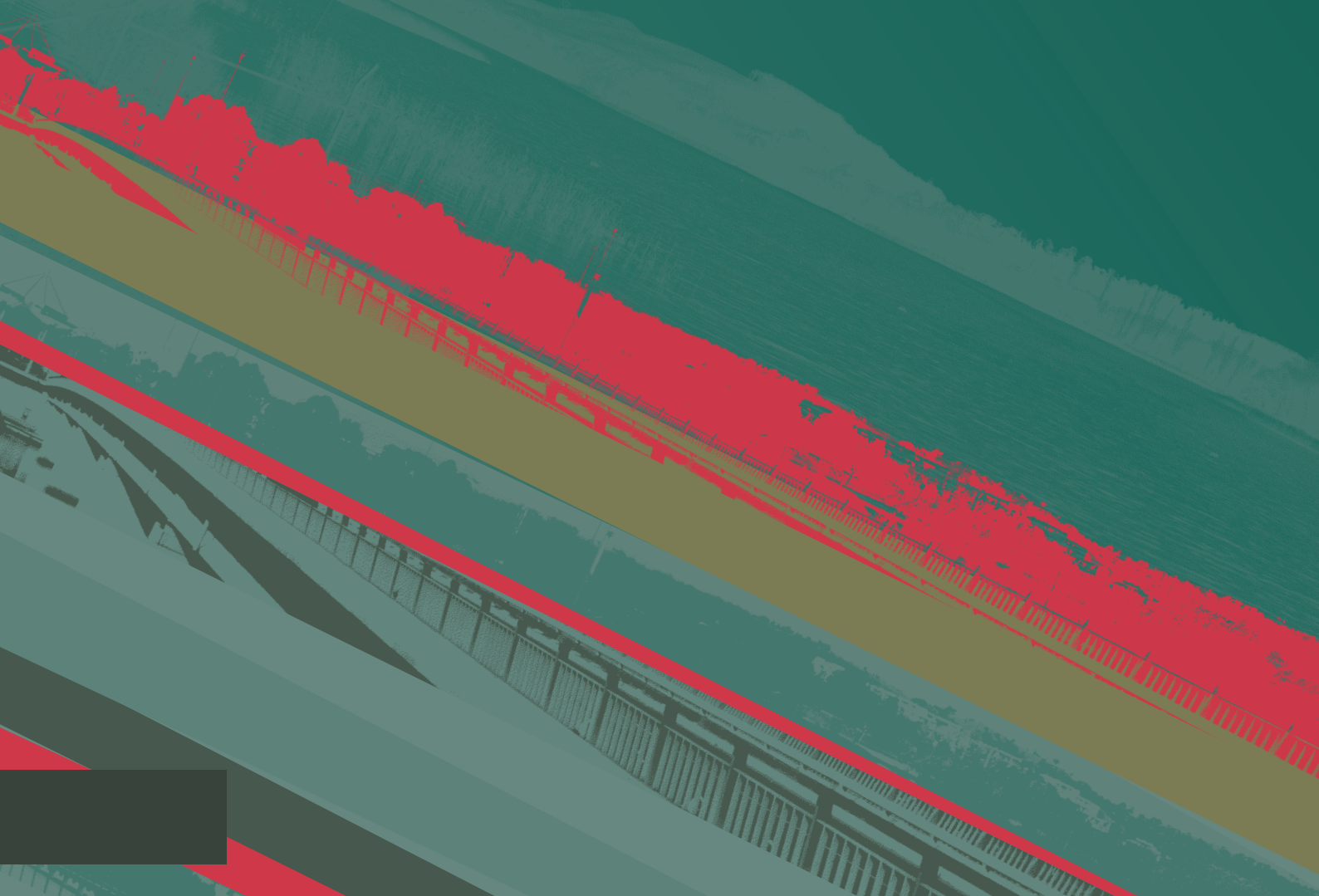


Australian Government
National Capital Authority

NATIONAL CAPITAL AUTHORITY

LAKE BURLEY GRIFFIN RECREATION POLICY

2017



© National Capital Authority 2017

This work is copyright. Apart from any use as permitted under the *Copyright Act 1968*, no part may be reproduced by any process without written permission from the National Capital Authority.

October 2010

CONTENTS

POLICY STATEMENT	5
LAKE BURLEY GRIFFIN RECREATION STRATEGIES.....	5
PURPOSE	5
CONTEXT	6
HISTORICAL SIGNIFICANCE	6
THE GRIFFIN LEGACY.....	7
ENVIRONMENT AND HERITAGE.....	7
DESCRIPTION.....	7
LAKES ORDINANCE 1976.....	8
Administration of the Ordinance	8
Control of the Lake.....	8
Use of the Lake.....	8
Rules for Preventing Collisions on the Lake	9
The Role of the Water Police	9
ACTIVITIES PERMITTED ON ON LAKE BURLEY GRIFFIN.....	9
ACTIVITIES NOT PERMITTED ON LAKE BURLEY GRIFFIN	11
EVENTS ON LAKE BURLEY GRIFFIN	11
EVENT OBJECTIVES	11
RISK MANAGEMENT, INDEMNITY AND PUBLIC LIABILITY INSURANCE	12
FIREWORKS ON LAKE BURLEY GRIFFIN	12
LAKE CLOSURES FOR SPECIAL EVENTS OR MANAGEMENT PURPOSES	12
Use of Power Boats on Lake Burley Griffin.....	13
Safety	13
Life Buoys	13
Emergency Telephones	14
Health Warnings.....	14
Right of Way between Watercraft.....	14
Restrictions on Public Use	14
CONSULTATION AND EVALUATION.....	15
Lake Burley Griffin Users Group	15
Water Quality Monitoring and Notification	15
Event Evaluation	15
Monitoring of Recreational Use.....	16
ATTACHMENT A	17
Use of Power Boats on Lake Burley Griffin.....	17
REFERENCES.....	19
Further Information.....	19

LAKE BURLEY GRIFFIN RECREATION POLICY 2017

The National Capital Authority (NCA) manages the Australian Government's continuing interest in the planning, development and enhancement of Canberra as the National Capital. Its vision is a National Capital which symbolises Australia's heritage, values and aspirations, is internationally recognised, and worthy of pride by Australians.

POLICY STATEMENT

In managing recreation on Lake Burley Griffin the NCA will maintain and encourage a range of compatible recreation opportunities consistent with the special characteristics and heritage values of Lake Burley Griffin and adjacent lands.

LAKE BURLEY GRIFFIN RECREATION STRATEGIES

- Promote the characteristics and attributes of Lake Burley Griffin in accordance with its national significance;
- Promote a broad range of recreational uses of Lake Burley Griffin that reflects Australian national life;
- Foster commercial opportunities that enhance visitor and community experiences of Lake Burley Griffin; and
- Foster sustainable environmental and heritage qualities.

Here it is, the centre of recreation. A Lake that will give completeness to all the scholastic facilities that exist and will exist in this city. A Lake that will complete the amenities of life.

Robert Menzies Speech, Opening of Lake Burley Griffin, 17 October 1964

PURPOSE

The Lake Burley Griffin Recreation Policy developed by the NCA:

- addresses key recreational management issues for Lake Burley Griffin and adjacent lands;
- establishes the NCA's objectives for the management of water based recreation; and
- enables the NCA to manage use of the Lake and adjacent land in an effective manner that promotes its national significance.

The recreation policy reflects the values and policies of the Lake Burley Griffin and Adjacent Lands Heritage Management Plan 2009 (HMP). The HMP identifies that the Lake possesses outstanding creative, technical and aesthetic heritage values for the nation and outlines a range of values, policies and actions for its future management. For its use and access it stipulates:

Providing the public with free and open access to the Lake and foreshores:

- Encouraging public access to the Lake for a variety of non motorised, water based recreational uses which do not impact on other heritage values;
- Continuing to use the Lake as a stage or setting for large public events (which are temporary and do not impact on heritage values); and
- Providing opportunities for organised and informal community and family gatherings around the lake.

Controlling recreational activities on the Lake to minimise noise and disruption to the water surface, avoiding impacts on the shore and shore users and minimising conflicts with other Lake users.

Ensuring the Lake is available and accessible for a range of uses by:

- Managing water quality to enable recreational uses including swimming and boating;
- Retaining existing points of access to the Lake for recreation (boat ramps and swimming areas); and
- Minimising uses that require closure of the Lake and foreshores (or parts thereof) to public access i.e. for private or corporate events.

The NCA is required to continue to monitor recreational use of the Lake to assess current patterns of use and determine future recreational needs.

CONTEXT

The Lake Burley Griffin Recreation Policy forms part of a suite of policy documents. This suite also includes:

- Lake Burley Griffin and Adjacent Lands Heritage Management Plan 2009; and
- Lake Burley Griffin Water Quality Management Plan 2011.

HISTORICAL SIGNIFICANCE

Lake Burley Griffin is an integral part of Canberra's design and was a vital component of the plan for the Nation's Capital. The Lake consists of the waters of the Molonglo River between Scrivener Dam and the Dairy Road Bridge.

Competition for the site for the future National Capital was intense. In 1908 the Yass-Canberra area was chosen by the Commonwealth Parliament owing to its 'bracing' climate, good water supply and natural beauty. Charles Scrivener, the New South Wales Government Surveyor, was instructed to explore all possible sites in the Yass-Canberra district. Scrivener's task was to investigate possible water catchment for the area and to prepare a contour survey for a site appropriate to the Seat of Government.

Named after Walter Burley Griffin, winner of the design competition for the National Capital in 1912, the Lake is a key element in Griffin's Plan for the city. The heart of the plan was a central artificial Lake and a 'Parliamentary Triangle', in which the most important national buildings were to be placed. The plan was structured on two major lines. One, the Water Axis, runs southeast from Black Mountain along the line of the formal central Lake. The other, the Land Axis, starts at Mount Ainslie, intersects the Water Axis at a right angle, crosses to Capital Hill and Mount Bimberi in the distant Brindabella mountains.

Griffin's original plan was modified to become a Lake controlled by a dam at a site originally suggested by Scrivener. This is now called 'Scrivener Dam'. The two bridges on Griffin's 'direct lines of communication' visually divide the Lake into three water basins as originally proposed (East, West and Central Basins).

In 1959, the Commonwealth Government agreed to the construction of Lake Burley Griffin and committed funds for the project. The design and construction of the Lake and Scrivener Dam were undertaken in two stages. The first stage commenced in 1960 and involved the construction of the dam, Lake floor, two bridges, jetties and edges of over 843 hectares of Lake foreshore. The impounding of the Lake waters commenced in 1963 with the closing of the valves of Scrivener Dam. Prime Minister Robert Menzies officially commemorated stage one, the filling of the Lake, on 17 October 1964. The second stage involved detailed landscape development of the foreshores and is an ongoing process.

THE GRIFFIN LEGACY

The Griffin Legacy, published by the NCA in 2004, highlights Walter Burley Griffin's aim of Extending the City to the Lake. The document proposes a variety of waterfront activities and continuous waterfront promenades which more actively engage the daily life of the city with Lake Burley Griffin (in keeping with the Griffin Plan).

In Extending the City to the Lake, the Griffin Legacy proposals for the Lake are to:

- develop a variety of waterfront activities on Lake Burley Griffin – diverse in urban, recreational and ceremonial character – consistent with the spirit of the Griffin Plan;
- enhance Lake-based tourist itineraries;
- maintain the ecological integrity of the Lake shores in any new development; and
- develop natural drainage corridors as linear parks and pedestrian/cycle paths to connect with the Lake parklands.

ENVIRONMENT AND HERITAGE

The National Capital Plan, formally recognises the history of the National Capital in its specification that ‘Matters of National Significance’ in the planning and development of Canberra and the Territory include:

- the pre-eminence of the role of Canberra and the Territory as the National Capital;
- preservation and enhancement of the landscape features which give the National Capital its character and setting;
- respect for the key elements of Walter Burley Griffin’s formally adopted plan for Canberra;
- creation, preservation and enhancement of fitting sites, approaches and backdrops for the national institutions and ceremonies as well as National Capital uses; and
- the development of a city which both respects environmental values and reflects national concerns with the sustainability of Australia’s urban areas.

The National Capital Plan also states ‘it is critical that water over which the Commonwealth has paramount rights should be allocated, as a matter of priority, to serve the needs of the National Capital’.

The Lake Burley Griffin and Adjacent Lands Heritage Management Plan 2009 states:

Lake Burley Griffin is an essential part of what defines Canberra. It is an essential component of the Griffin Plan for a Lake to link and unify the axes and vistas of the plan to the underlying landform of the place. The Lake is a unique and creative aspect of Australia’s most successful urban plan, which is highly valued by communities for its aesthetic qualities. The Lake is an outstandingly successful engineering and technical achievement which underpins the success of its creative and aesthetic qualities.

Lake Burley Griffin and Adjacent Lands Heritage Management Plan 2009 (Vol. 1 page 2)

DESCRIPTION

Lake Burley Griffin covers 664 hectares and the shoreline is 40.5 kilometres. There are three large islands and three small unnamed islands within the Lake. Aspen Island (the site of the National Carillon) is located in Central Basin. Springbank Island and Spinnaker Island are located in West Lake.

SITE MAP OF LAKE AREAS



The Lake area is sub-divided and classified as follows:

- > East Basin (from the river mouth at Pialligo to Kings Avenue Bridge);
- > Central Basin (between Kings Avenue Bridge and Commonwealth Avenue Bridge);
- > West Basin (Commonwealth Avenue Bridge to Acton Peninsula);
- > West Lake (Acton Peninsula to Black Mountain Peninsula);
- > Tarcoola Reach (Orana Bay to Kurrajong Point);
- > Yarramundi Reach (Kurrajong Point - Governor General's residence); and
- > Yarramundi Inlet (Governor General's residence to Scrivener Dam).

LAKES ORDINANCE 1976

The NCA administers, on behalf of the Minister, the *National Land Ordinance 1989* and applied provisions, including the *Lakes Ordinance 1976*. In administering the Lakes Ordinance 1976, the NCA undertakes measures to manage Lake Burley Griffin for a variety of functions and in accordance with objectives that reflect community values.

The *Lakes Ordinance 1976* contains provisions relating to:

ADMINISTRATION OF THE ORDINANCE

- > delegate of the Minister and the powers of the delegate; and
- > Inspectors and the powers of Inspectors, including obstruction of Inspectors.

CONTROL OF THE LAKE

- > rights in Lake waters;
- > unauthorised taking of water;
- > alterations in water level; and
- > compensation for damage.

USE OF THE LAKE

- > erection of signs;
- > interference with signs;
- > prohibitions relating to boats;
- > prohibitions relating to swimming;
- > restrictions on mooring;
- > approved buoys, wharves and jetties;
- > conduct of regattas including Lake closures;
- > agreements for use of Lake areas;
- > anchoring of boats;
- > power to charge for admission;
- > selling or hiring of goods;
- > restrictions on use of power boats;
- > removal of vehicles and boats from the Lake, and
- > camping.

RULES FOR PREVENTING COLLISIONS ON THE LAKE

- > observance of lighting rules;
- > rules of water navigation; and
- > navigation of boats in a dangerous or careless manner or while intoxicated.

THE ROLE OF THE WATER POLICE

The Water Police at the Yarralumla Bay play an important role in ensuring the public's safety on the Lake.

Their services include:

- > to provide overall enforcement under relevant legislation;
- > to provide immediate response to incidents in the Lake (eg. for drowning and accidents);
- > to rescue water craft and swimmers in distress via Emergency No 000; and
- > other duties involving obstacle removal, securing the Lake, general public safety during major public events, safety inspections of water craft, and patrolling of the shoreline for public security.

ACTIVITIES PERMITTED ON ON LAKE BURLEY GRIFFIN

Lake Burley Griffin and its foreshore provides the opportunity for a wide range of recreational and commercial activities.

These include:

- > Canoeing/Kayaking/Stand Up Paddleboards;
- > Dragon Boats;
- > Rowing;
- > Ferry Services, charter boats and water taxis;
- > Sailing;
- > Fishing;
- > Swimming;
- > Hire Boats;
- > Traditional Boats;
- > Model Boats;
- > Triathlon; and
- > Windsurfing.

Any proposal for new recreational opportunities will be assessed by the NCA to ensure they are consistent with the Lake Burley Griffin Recreation Policy and Lake Burley Griffin and Adjacent Lands Heritage Management Plan. New recreational activities will generally be subjected to a trial period, allowing a full assessment of the activity, its impact on other users, heritage value and environmental issues can be determined.

LAKE BURLEY GRIFFIN ROWING AND SAILING COURSE



ACTIVITIES NOT PERMITTED ON LAKE BURLEY GRIFFIN

The Lake Burley Griffin Recreation Policy reflects and is consistent with the Lake Burley Griffin and Adjacent Lands Heritage Management Plan 2009. To create consistency between the two policies the following activities and uses are not permitted on the Lake:

- water skiing;
- wakeboarding;
- hovercraft;
- houseboating; and
- jet ski.

These activities have been identified as likely to have a significant impact on the social and aesthetic heritage values of Lake Burley Griffin. The conservation policies in the Heritage Management Plan aim to conserve the social and aesthetic qualities of the Lake. The Heritage Management Plan promotes the 'non-motorised' recreational use of the Lake, and 'minimizing the noise and disruption to the water surface'. The conservation policies also aim to promote the Lake as being part of a national landscape that represents the Australian Capital.

EVENTS ON LAKE BURLEY GRIFFIN

Lake Burley Griffin is the focus for many events conducted in the National Capital. In appraising events proposed for Lake Burley Griffin, the NCA will give special consideration to:

- impact on heritage values;
- regular Lake users such as sailing, rowing, canoeing, swimming and ferry boat operations;
- the environmental impact of any activity on the Lake; and
- effect on essential Lake maintenance.

EVENT OBJECTIVES

The NCA's objective is to encourage events that:

- > celebrate Canberra as a symbol of Australian federation and character;
- > reflect Australian historical, cultural and lifestyle experiences;
- > promote the attributes of Canberra that are of national significance;
- > provide opportunities to broaden Australians' experience of their capital;
- > enliven the national public areas of the capital; and
- > showcase the National Capital to a wide audience and infrastructure.

The following assessment criteria will be used prior to determining final approval for events on Lake Burley Griffin and its foreshore:

- > the organiser's capacity to stage and manage the event;
- > capacity of the proposed area of the Lake and safety for the public, participants and event organisers;
- > the scale and extent of the event and associated structures;
- > the timing and duration of the event;
- > potential conflicts with other events and special occasions;
- > environmental impact (including noise and disruption to the water surface);
- > consistency with use and access as outlined in the Heritage Management Plan;
- > public access to surrounding areas and amenities;
- > risk to public safety;
- > public or exclusive access to the event;
- > requirements and approvals external to the NCA, such as those of the Water Police and liaison with WorkSafe ACT and Environment, Planning and Sustainable Development Directorate when deemed appropriate; and
- > national security.

The NCA will aim to foster a co-operative relationship between all users through communication and consultation.

RISK MANAGEMENT, INDEMNITY AND PUBLIC LIABILITY INSURANCE

- > Organisers of an activity or event on Lake Burley Griffin will hold appropriate levels of public liability insurance and indemnify the Commonwealth against all claims that may arise from the event; and
- > Depending on the size, complexity and nature of the proposed event or activity, the organisers may also be required to prepare a risk management plan for consideration by the NCA.

FIREWORKS ON LAKE BURLEY GRIFFIN

Fireworks displays will be approved only in relation to public events.

It is the responsibility of event organisers who hold event permits and/or works approvals, and wish to conduct a fireworks display, to ensure:

- > all safety aspects are met;
- > appropriate insurance cover has been arranged; and
- > authorisations and approvals are obtained from such agencies as WorkSafe ACT and ACT Emergency Services.

LAKE CLOSURES FOR SPECIAL EVENTS OR MANAGEMENT PURPOSES

For the purposes of safety or other operational requirements, areas of the Lake may be declared closed by the NCA under the Lakes Ordinance 1976. Lake closures are generally required in the following instances:

- swimming events in Central Basin;
- fireworks displays;
- water quality issues;
- routine maintenance activities; and
- other events where the safety of participants, Lake users or the public may be at risk.

Authorisations for commercial operators or specific water craft may be granted during a Lake closure. The Water Police operations are not affected by Lake closures.

USE OF POWER BOATS ON LAKE BURLEY GRIFFIN

A permit to use a power boat on Lake Burley Griffin (Attachment A) may be issued by the NCA in conjunction with an approved event or activity.

The number of power boat events on Lake Burley Griffin each year is not predetermined. Each power boat event application will be assessed against the event assessment criteria prior to approval from the NCA.

Conventional power boats and other types of powered craft may be permitted on the Lake, as set out in the permit categories. Non-powered craft do not require a permit. Permit categories are as follows:

C1 PERMIT CATEGORY 1

- Boats used for rescue, coaching or judging boats in support of aquatic sports;
- Power boats specifically used as part of an approved event or training activity; and
- Petrol motors are permitted to be used under this category.

C2 PERMIT CATEGORY 2

- Boats used for general use, including fishing boats and sailing boats with auxillary motors; and
- Electric motors are to be used on fishing boat in normal circumstances. Petrol motors can be used only in emergencies.
- Small petrol and electric motors can be used on sailing boats in emergencies and to move in and out of embayments. Sails must be used in open water in all other circumstances.

C3 PERMIT CATEGORY 3

- Boats used for Lake management, scientific research or other specified non-recreational uses (generally 'conventional' power boats);
- 'Special interest' boats. Power boats that can justify access to the Lake for special reasons other than just recreation for the owners. This category includes steam or petrol-powered traditional boats which can support a case for access on aesthetic grounds by adding an element of interest because of their special character; and
- Petrol motors are permitted to be used under this category.

C4 PERMIT CATEGORY 4

- Boats used for commercial tourist use (eg. ferries, hire boats) in conjunction with a commercial activities licence agreement.

All permit holders are expected to operate their craft in a manner consistent with the Recreation Policy, the Heritage Management Plan and all applicable legislation.

SAFETY

Public safety is of paramount importance to the NCA. In some circumstances there may be restrictions imposed on certain activities, such as the closure of the Lake due to adverse water or weather conditions.

All approvals for activities utilising the Lake must have due regard to public health and the work health and safety of all persons involved.

Safety considerations for Lake Burley Griffin include:

LIFE BUOYS

- Life buoy boxes are located in all nominated swimming areas, jetties, under bridges and high use areas such as Yarralumla Bay and Lotus Bay.

EMERGENCY TELEPHONE

- An emergency telephone is located on Springbank Island; and
- This phone connects directly to ACT Emergency Services.

HEALTH WARNINGS

- The NCA regularly tests water quality. If necessary the NCA, will enforce restrictions to sections of the Lake for public safety reasons;
- The NCA advises Lake users of any potential risk, and the level of caution needed to be taken. Any closures and warnings are promoted in Canberra's media and appear on the NCA website. Members of the Lake Users Group are also notified by email; and
- Safety signage at swim beaches and boat ramps provide the latest information on water quality and Lake safety measures.

RIGHT OF WAY BETWEEN WATERCRAFT

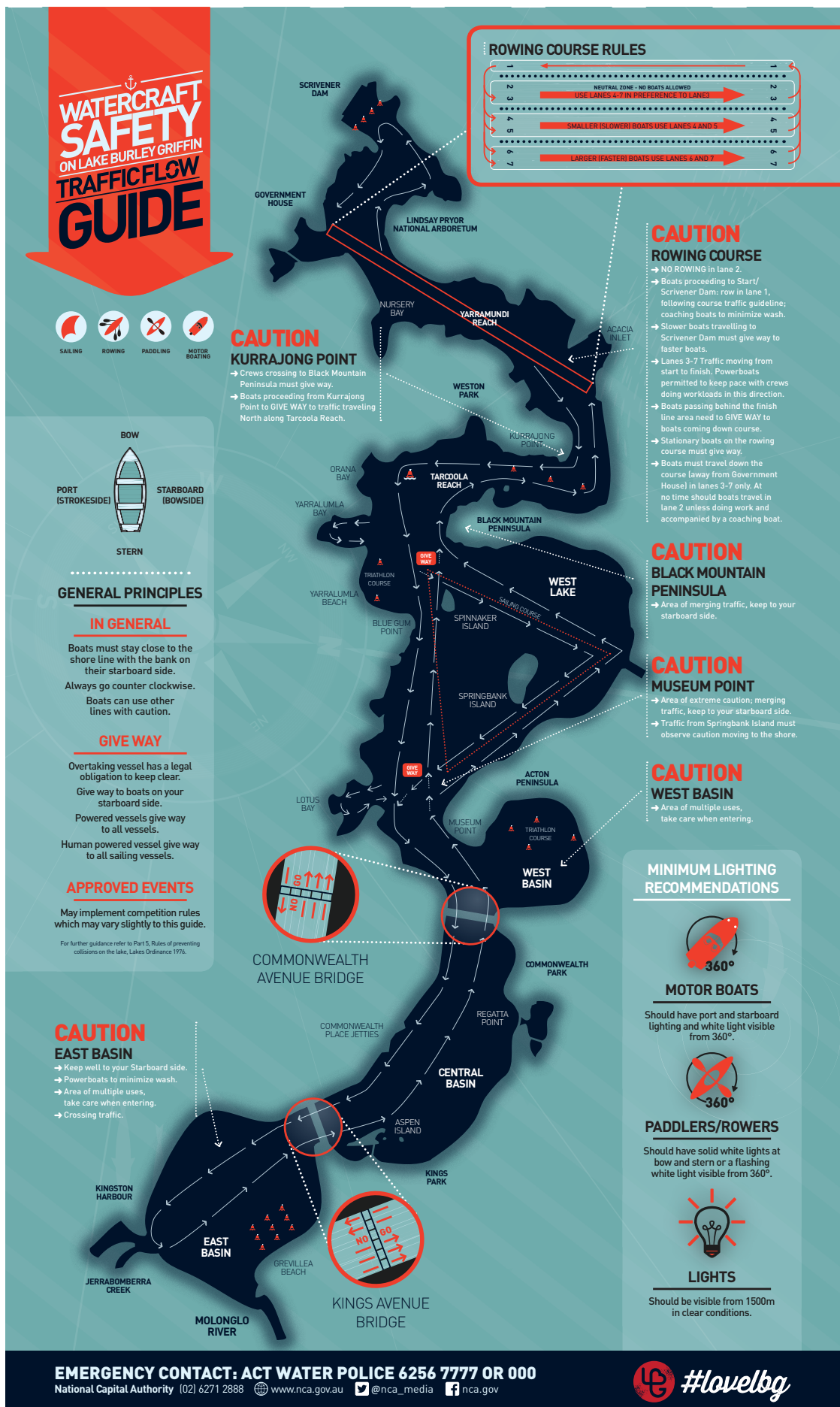
- Normal waterway rules require power boats to give way to sail or row boats. Oar propelled craft are to give way to sailing craft;
- Similarly, Lake ferries are legally required to give way to sail craft. However due to their size, ferry manoeuvrability may be limited in a conflict situation; and
- All users are encouraged to show respect for other users.

RESTRICTIONS ON PUBLIC ACCESS

Certain areas of Lake Burley Griffin are restricted to the public for safety and security reasons.

These include:

- The section of water 130 metres upstream of Scrivener Dam (as indicated by the line of buoys placed across the Lake);
- the foreshore of Government House;
- the foreshore and jetty at the maintenance area in Yarramundi Inlet, where a floating gate is housed for Scrivener Dam maintenance purposes; and
- the water surface of Warrina Inlet upstream of the line of buoys placed across the inlet.



CONSULTATION AND EVALUATION

LAKE BURLEY GRIFFIN USERS GROUP

The Lake Burley Griffin Users Group was formed in 2004 by the NCA with the aim of giving current Lake users the opportunity to liaise with the NCA about Lake management issues.

The Lake User Group facilitates a range of Lake management issues with key Lake users, who are mainly member based organisations, peak sporting bodies and commercial operators. Groups interested in joining the Lake User Group should contact the NCA.

WATER QUALITY MONITORING AND NOTIFICATION

The Lake Burley Griffin Water Quality Management Plan allows the NCA to ensure the preservation and enhancement of the Lake as a central landscape feature of the National Capital. Regular water quality testing during the Recreational Season (October-April) enables the NCA to monitor the environmental health aspects of the Lake and advise users of any potential problems as they arise.

EVENT EVALUATION

The appropriateness and success of events held on Lake Burley Griffin may be evaluated and reviewed by the NCA.

Evaluation includes:

- the event application form and the comprehensive approvals process undertaken;
- the results of the event and whether they have met the objectives set out in the application form;
- any impact on the Lake and its surrounds; and
- any feedback received from participants, regulatory bodies, stakeholder groups, or the general public following the event.

MONITORING OF RECREATIONAL USE

The NCA will carry out periodic monitoring of recreational use of the Lake to assist in the management of recreational activities. This will assist in the assessment of current patterns of use and determine future recreational needs.

LAKE BURLEY GRIFFIN SAFETY MAP



LEGEND

- Life Buoy Boxes
- ⊗ Throw Life Ring
- Navigation Lights
- ☎ Emergency Phone
- Emergency Ladders

ATTACHMENT A

USE OF POWER BOATS ON LAKE BURLEY GRIFFIN

Provisions governing the use of boats on the Lake are set out in the *Lakes Ordinance 1976*. These provisions cover the use of powerboats; anchoring and mooring of boats; restrictions on the use of powerboats; lighting rules; rules of the water; and navigation of a boat in a dangerous or careless manner or while intoxicated.

Under the provisions of the *Lakes Ordinance 1976*, four categories of permits, as given below, are issued to allow power boats in Lake Burley Griffin.

C1 Boats used for rescue, coaching or judging boats used for organised sports may be granted a permit under section 26 (1) (b) of the *Lakes Ordinance 1976*. Permit holders are required to:

- > display the identification issued with the permit;
- > use the boat only for the purpose specified in the application and confine that use to the area of the sporting activity supported;
- > limit the boat to a reasonable and necessary speed; and
- > ensure that drivers carry either a current powerboat drivers licence issued in any state or territory; 'TL3' Certificate issued by Yachting Australia; or a National Powerboat Handling Certificate from Sailing Australia.

C2 (A) Boats used for general use (including fishing boats) may be granted a permit under section 26 (1) (c) of the *Lakes Ordinance 1976*. Permit holders are required to:

- > display the identification issued with the permit;
- > limit the boat to a reasonable and necessary speed;
- > electric or solar powered motors are to be used in normal circumstances. Where petrol motors are fitted to the boat, they can only be used in emergency circumstances;
- > give way to rowers in Yarramundi Reach, use the perimeter transit lanes, and observe the traffic flow guide for the Lake; and

C2 (B) Trailerable yachts with auxiliary power may be granted a permit under section 26 (1) (c) of the *Lakes Ordinance 1976*. Permit holders are required to:

- > display the identification issued with the permit;
- > limit the boat to a reasonable and necessary speed;
- > give way to rowers in Yarramundi Reach, use the perimeter transit lanes, and observe the anti-clockwise movement from Black Mountain boat ramp during rowing activities;
- > ensure that yachts using auxiliary power on the Lake are fully equipped for sailing. Skippers using auxiliary power should comply with Safety Regulations of the Australian Sailing;
- > small petrol or electric motors can be used on sailing boats emergencies and to move in and out of embayments.

C3 (A) Boats used for Lake management, scientific research or other specified non-recreational uses may be granted a permit under section 26 (1) (c) of the *Lakes Ordinance 1976*. Permit holders are required to:

- > display the identification issued with the permit;
- > use the boat only for the purpose specified in the application;
- > limit the boat to a reasonable and necessary speed;
- > ensure that drivers hold a current powerboat driver's licence issued in any Australian state or territory; and
- > where required under *Marine Safety (Domestic Commercial Vessel) National Law 2012*, the boat operator must hold the appropriate standard of coxswain's certificate. The NCA may require a copy of the determination from the Australian Maritime Safety Authority if this is not required.

C3 (B) 'Special interest' boats may be granted a permit under section 26 (1) (c) of the Lakes Ordinance 1976. Permit holders are required to:

- > display or carry the identification issued with the permit ('Traditional Boat' owners are not required to affix the permit sticker to their boats);
- > limit the boat to a reasonable and necessary speed;
- > give way to rowers in Yarramundi Reach, use the perimeter transit lanes, and observe the traffic flow guide for the Lake;
- > Where a permit is sought for a 'Traditional Boat', the boat must conform to the following specifications/requirements:
 - the design/style shall be such that a period of at least thirty (30) years has elapsed since the introduction of the design. Planing hulls will not be permitted regardless of the age of the design;
 - the construction materials may be any recognised boat building materials with the exception of aluminium, Ferro cement, stainless steel, thermoplastic or carbon fibre;
 - the motive power may be steam, internal combustion or electricity. The maximum power shall be commensurate with the design of the boat. Outboard motors shall be of demonstrable historical interest. The power source, in itself, will not determine eligibility for a permit, but the style, design and construction of the boat as a whole; and
 - applications will be required to demonstrate the genuine traditional nature of the boat, either as an original boat or an authentic replica.

C4 Power boats (e.g. ferries) for commercial tourist use may be granted a permit under section 26 (1) (c) and section 33 of the *Lakes Ordinance 1976*.

- > the use of power boats for tourist activities on Lake Burley Griffin is well established and the NCA has provided for an expansion of services of this type. The provision of such services and their supportive infrastructure will be reviewed as necessary, related to tourist access to the Lake and foreshore attractions, and consistency with the Lake Burley Griffin Recreation Policy and the Lake Burley Griffin and Adjacent Lands Heritage Management Plan;
- > the operation of power boats for tourist or other commercial purposes shall be subject to an agreement under Section 33 of the Lakes Ordinance 1976. The agreement shall specify, among other things, the parts of the Lake in which the services may operate and any restrictions which may be placed at times on their operations (e.g. if parts of the Lake are closed for other activities);
- > operators of small hire boats can request an exemption for drivers of their hire boats, if appropriate risk mitigation strategies are in place (eg. comprehensive induction explaining lake safety rules, boats are speed limited, boats do not operate at night, etc);
- > in all circumstances, boats used for this purpose require a determination under Marine Safety (Domestic Commercial Vessel) National Law 2012), on the requirement of a certificate of survey; certificate of operation; and weather the boat operator must hold a coxswain's certificate. The NCA will require a copy of the determination from the Australian Maritime Safety Authority if this is not required.

The Lake Burley Griffin Recreation Policy reflects and is consistent with the Lake Burley Griffin and Adjacent Lands Heritage Management Plan 2009. The following activities are not permitted in line with this Policy and therefore not permitted under Section 33 of the Lakes Ordinance 1976.

- water skiing;
- wakeboarding;
- hovercraft;
- houseboating; and
- jet skiing.

The NCA applies the following criteria to assess applications for *Lakes Ordinance 1976* Section 33 Agreements:

Public Safety

- Quality of safety management plan;
- Track record in compliance with safety requirements;
- AMSA inspections and advice; and
- Training of staff in first aid and safety matters.

Impact on Lake Environment, Heritage and Infrastructure

- Potential for impacts on Lake quality, disturbance of the Lake bed and foreshores or other risks;
- Extent to which commercial activity impacts on other Lake users, commercial and recreational, and the potential for any adverse impacts;
- Consistency of the activity with the values set out in the Lake Burley Griffin Heritage Management Plan and Lake Burley Griffin Recreation Policy; and
- Capacity of the Lake infrastructure to cater for the additional activity – jetties, bridges, moorings, slipways.

Purpose of Activity and Consistency with National Capital

- Potential impact on the standing of the National Capital (visual, noise, quality of tourist information);
- Nature of the activity and its alignment/consistency with significance of the National Capital and the Lake as set out in the National Capital Plan, Heritage Management Plans and related policies;
- Quality of service arrangements – presentation of staff, cleanliness, on board facilities, promotion and web information, signage; and
- Any other matters considered relevant by the NCA.

Power boats for tourist or other commercial purposes must comply with the safety provisions of the *Lakes Ordinance 1976* and the respective licence agreements issued under section 33 of the Ordinance. This includes survey inspections by the certifying authority (eg the Australian Maritime Safety Authority) generally undertaken annually. The boats are also subject to random audits by the certifying authority.

REFERENCES

- > Lakes Ordinance 1976
- > The Griffin Legacy – Published by the NCA, 2004
- > The National Capital Plan – Published by the NCA
- > Lake Burley Griffin Water Quality Management Plan – Published by the NCA, 2011
- > Lake Burley Griffin and Adjacent Lands - Heritage Management Plan, 2009

FURTHER INFORMATION

For further information contact the National Capital Authority:

BY VISITING

National Capital Authority
Treasury Building
King Edward Terrace
Parkes ACT 2600

BY WRITING TO

National Capital Authority
PO Box 373
Canberra ACT 2601

BY EMAIL TO

info@nca.gov.au

BY TELEPHONE OR FAX

Telephone: (02) 6271 2888

Fax: (02) 6273 4427

BY VISITING OUR WEBSITE

www.nca.gov.au



NATIONAL CAPITAL AUTHORITY

GPO Box 373 CANBERRA ACT 2601

Telephone: (02) 6271 2888 **Facsimile:** (02) 6273 4427

Email: info@nca.gov.au