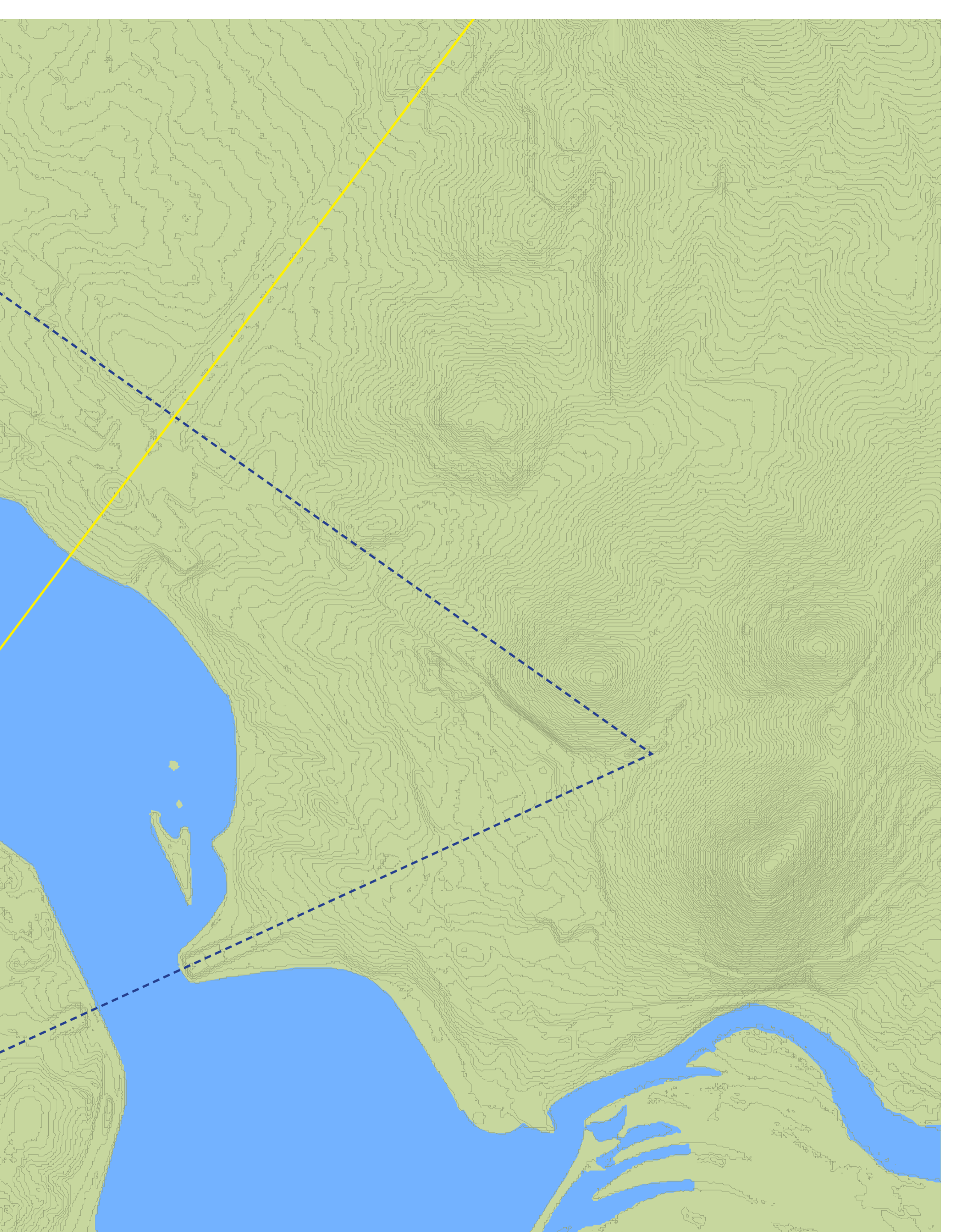


A topographic map of Canberra, Australia, showing contour lines and water bodies. A blue dashed line traces a path through the city, and a yellow solid line runs diagonally across the lower right. The text 'NATIONAL CAPITAL EXHIBITION THE STORY OF CANBERRA' is in the top left, and 'Future City Activity' is in the bottom left.

**NATIONAL
CAPITAL
EXHIBITION**
THE STORY OF CANBERRA

Future City Activity



Key



Mountainous



Grass lands and plains



Lake waters



National Triangle



Central Land Axis