

# NATIONAL CAPITAL EXHIBITION

THE STORY OF CANBERRA



**Australian Government**  
**National Capital Authority**

## Designing for a future Capital City

You have watched our virtual tour: *The Story of Canberra* so you have some understanding of the history and planning of our National Capital. Canberra is a city that continues to evolve from the original Griffin design of 1911. It is a monumental city designed and built to house our federal government and represent our country to the world. Parliamentary buildings are a feature within the National Triangle and these buildings reflect our democratic values.

Canberra has become a beautiful garden city, just as the Griffins intended, built in harmony with the landscape. However, cities evolve and change with time. Think about how your future city will reflect sustainable living patterns. For example your future city may have more trees and parks, clean energy solutions and less pollution.

**Imagine** it is 30 years in the future and **you** are designing a unique capital city. Just like Walter Burley Griffin and Marion Mahony Griffin, you have been presented with a topographical map with details of your land area. Your city is to contain monumental buildings for government and iconic cultural centres. You are also asked to create a sustainable city.

**Think** about what sustainability means to you and how you will incorporate this into your future capital city? The year is 2050, make some thoughtful predictions about what you think the climate will be like in your capital city and surrounds. What will you name your city? Time to get creative.

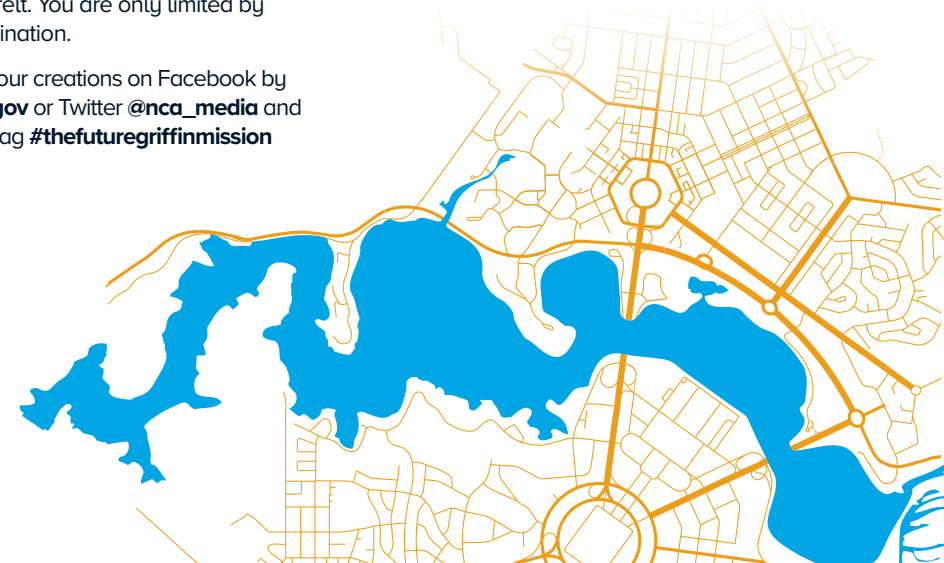
**Download** our topographical map of the area that you will be designing. It indicates the land and water areas as well as provides a suggestion of the landscape format. Once you have the A3 size 2 page map sticky taped together you are ready to get busy designing.

**Design and build** your capital city in a 3 dimensional format, using craft materials, so that your city will take shape and may be viewed from above or from ground level. You may like to use crepe paper, cardboard, match sticks, paddle pop sticks, small food boxes or even felt. You are only limited by your own imagination.

Please share your creations on Facebook by tagging [@nca.gov](https://www.nca.gov.au) or Twitter [@nca\\_media](https://twitter.com/nca_media) and using the hashtag [#thefuturegriffinmission](https://twitter.com/thefuturegriffinmission)

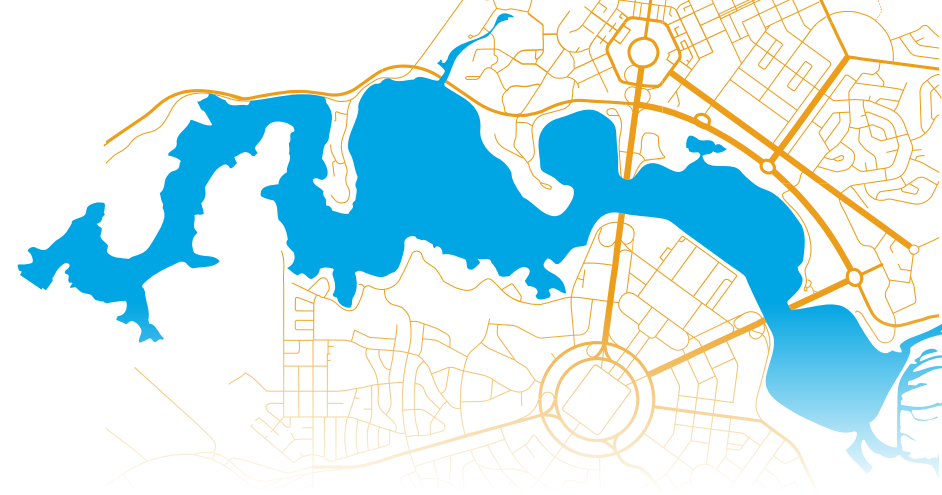
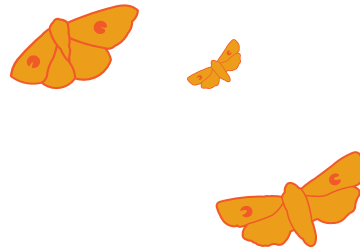


Explore  
Canberra's  
past, present  
and future.



# NATIONAL CAPITAL EXHIBITION

THE STORY OF CANBERRA



## Designing for a future Capital City

### Activity Directions

1. Separate into small groups of two or three students.
2. Develop a plan of action.
3. Decide what buildings and institutions you will have and who is building what.
4. Think about where buildings will go and why?
5. Think about the landscape – will natural features remain the same? Be extended or changed? Will they be removed?
6. How will the finished city design look?

### Group Discussion Points

Discuss the ideas listed below when designing your future capital city.

- ▶ How will you create a green city for the future?
- ▶ Design an exciting city with places for entertainment.
- ▶ How will the parliamentary buildings reveal an Australian identity?
- ▶ How will you design a city that encourages participation and representation for all citizens?
- ▶ How will you design for a safe city?
- ▶ Design to preserve and restore built and natural environments.
- ▶ Make predictions about future climate: How will this affect your city design?
- ▶ Create a beautiful city in harmony with the surrounding landscape.

Some important design features to think about, you may like to incorporate some or all of these in your future capital city design.

- ▶ Government buildings (parliament)
- ▶ Public Artworks / Monuments
- ▶ Museums and Galleries
- ▶ Parks and Gardens
- ▶ Clean energy sources
- ▶ Ornamental water and major water reservoirs
- ▶ Tree canopy (how will this be grown and maintained?)

