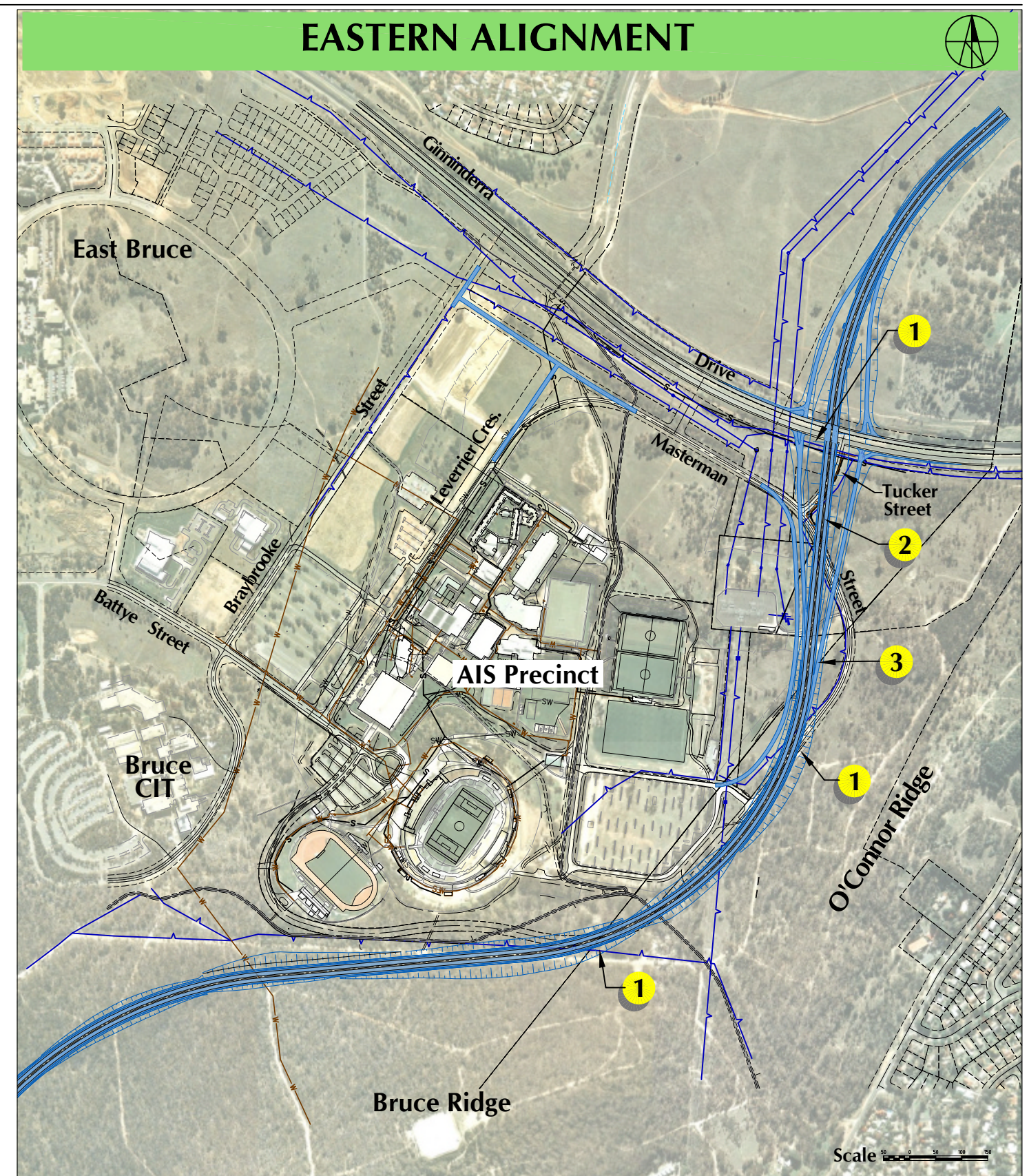


Comments:

1. Major stormwater mains beneath Ginninderra Drive and about 200m of the downstream stormwater channel require relocation/adjustment
2. Relocation of 132kV high voltage and 22kV/11kV low voltage overhead and underground power lines required.
3. Impacts on sewer outfall from AIS.
4. New stormwater retardation ponds proposed.
5. Both primary and secondary water supply mains to AIS require relocation into new bridges.
6. Gas supply and telecommunications to AIS (single supply) to be incorporated into new bridge.
7. Major Optus telecommunications cable impacts.



Comments:

1. Overhead low voltage power lines require undergrounding.
2. Relocation of minor sewer and water supply serving ActewAGL Switching Yard required.
3. Telstra communications cable requires adjustment