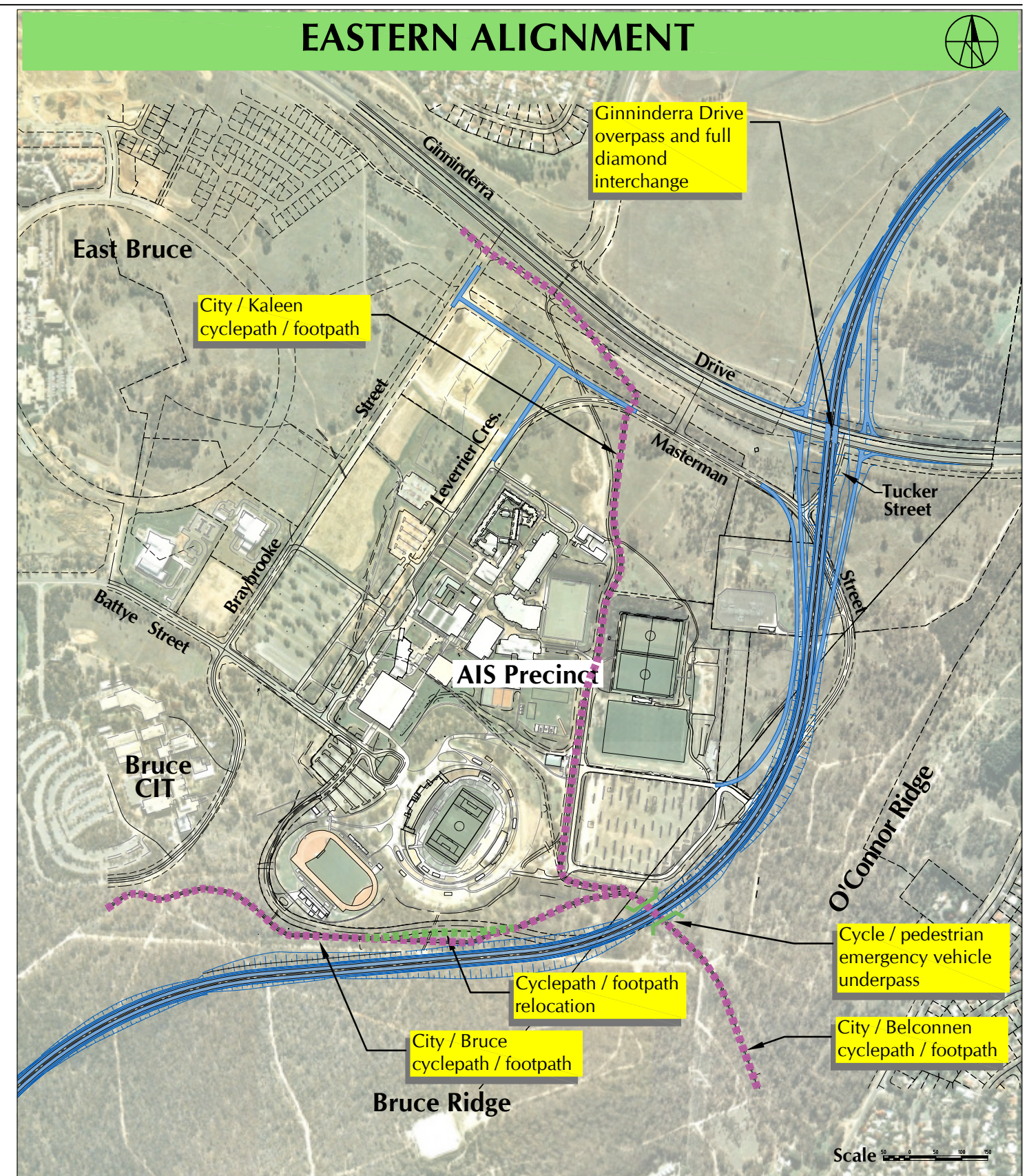


Comments:

1. Three road overbridges and one cyclepath / footpath overbridge required.
2. Cyclepath / footpath relocation at Ginninderra Drive and Bruce CIT required.
3. Cyclepath / footpaths deviation (400m) at Bruce CIT is about 200m longer than existing and requires an extra 10m of elevation to be traversed



Comments:

1. One road overbridge and one cyclepath / footpath / emergency services underpass.
2. Relocation of 200m of section of City / Bruce cyclepath / footpath required.