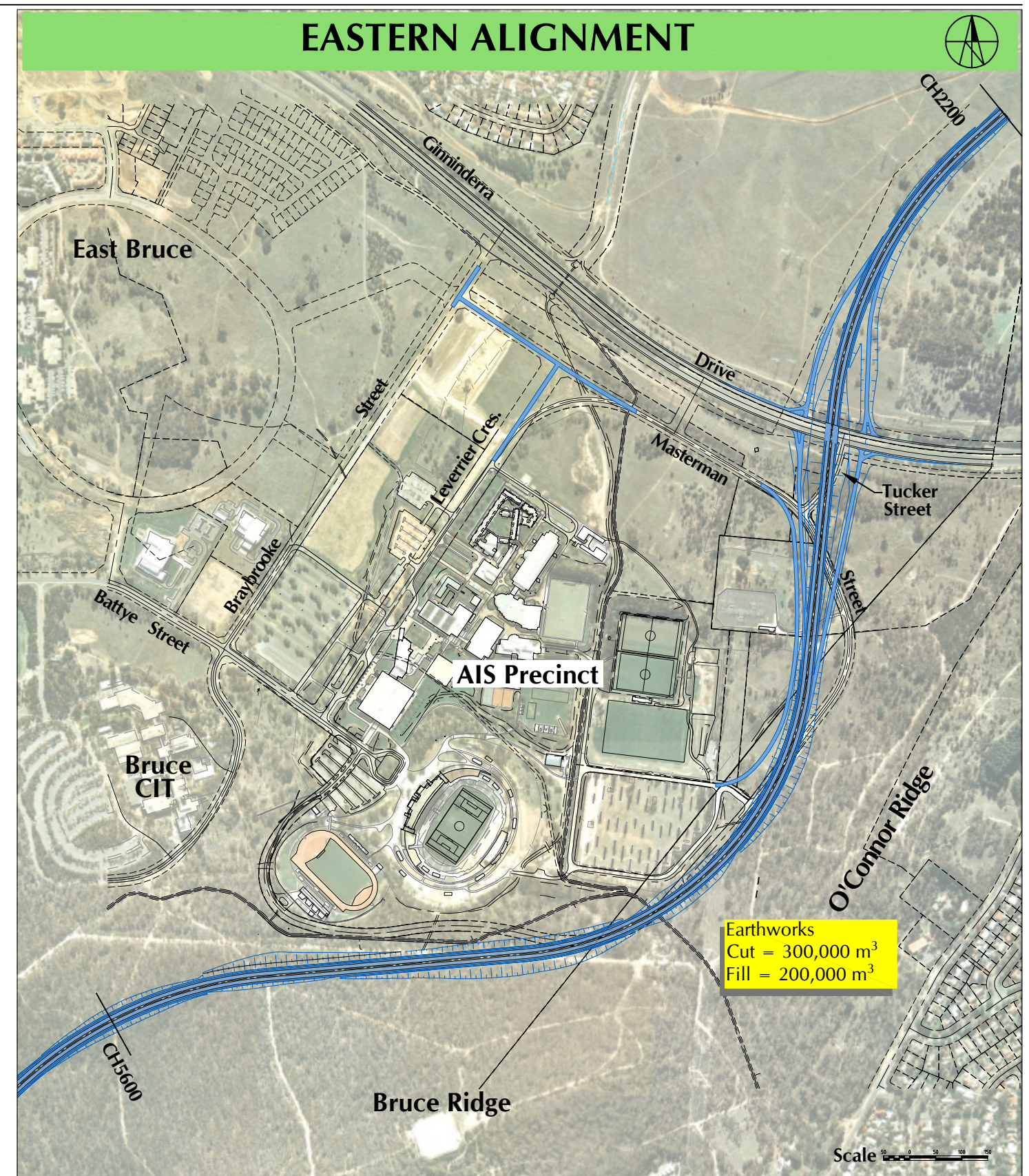




Comments:

1. Earthworks approximately 500,000 m<sup>3</sup> cut; 50,000 m<sup>3</sup> fill. Approximately 450,000 m<sup>3</sup> transported to other sections of the project.
2. Longer construction time, higher cost, more construction noise, more operational noise due to 7 % grade, more emissions compared to Eastern Alignment.



Comments:

1. Earthworks approximately 300,000m<sup>3</sup> cut; 200,000m<sup>3</sup> fill. Approximately 100,000m<sup>3</sup> transported to other sections of the project.
2. Noise, emissions, construction time and cost minimised.