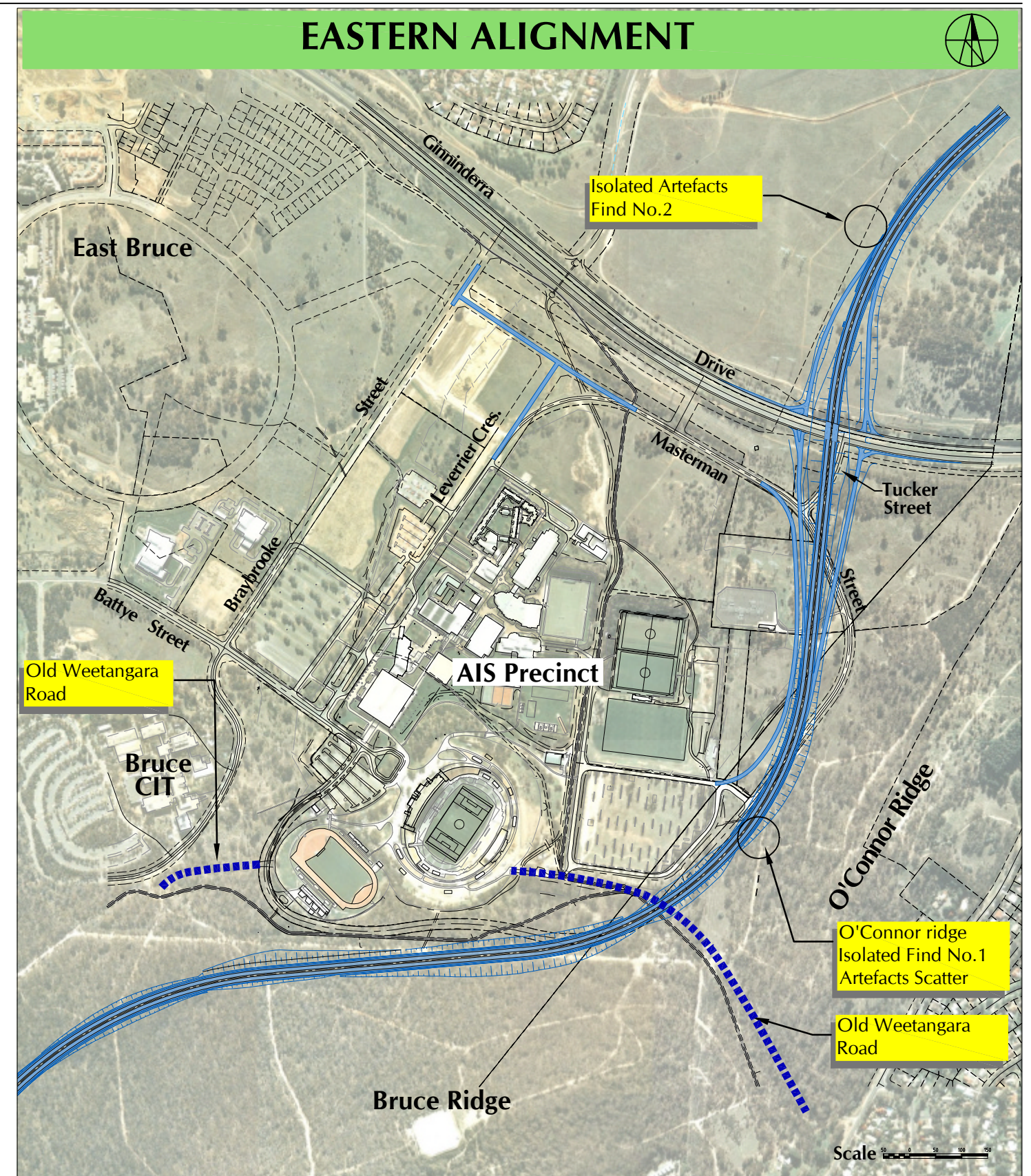




Comments:

1. Isolated Artefacts Find No.2 impacted. Requires recording/collection
2. Potential Artefacts Deposit impacted. Requires further detailed examination.
3. Old Weetangara Road remnant severely impacted upon.



Comments:

1. Isolated Artefacts Find No.2 not affected.
2. O'Connor Ridge Isolated Find No.2 (Artefacts Scatter) impacted. Requires recording/collection.
3. Old Weetangara Road cut by GDE but integrity retained via new underpass for City/Belconnen cyclepath/footpath/emergency access.