

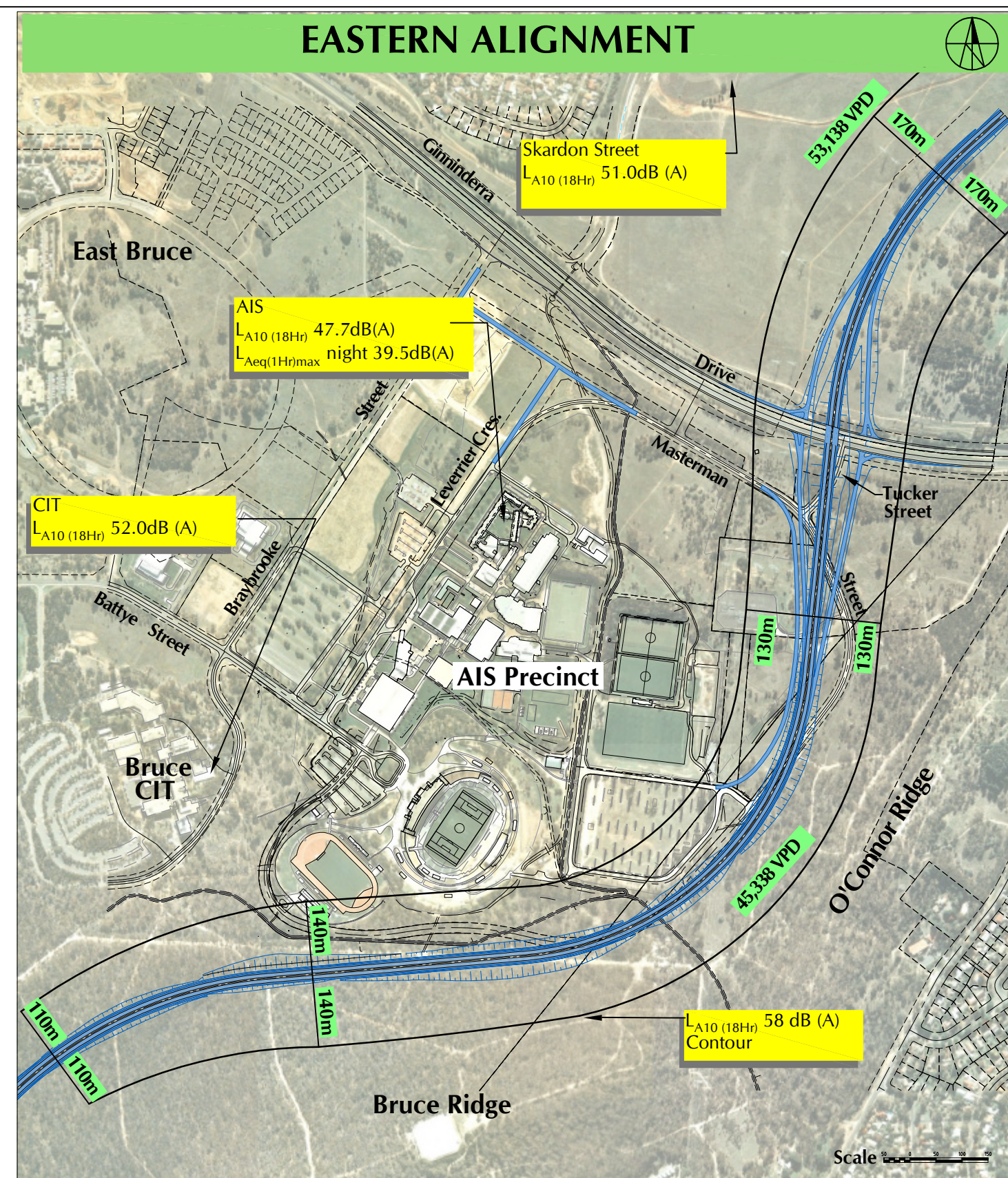


Western Alignment Comments:

1. More impact on AIS Residences than Eastern Alignment
2. All predicted noise levels are within ACT and Fitch criteria
3. Noise impacts could be further reduced using mitigation measures
4. Steep gradients at Battye Street reduce traffic speeds. This increases noise from trucks.

General Comments:

1. All noise levels indicated are Predicted Noise levels calculated as part of this assessment assuming no noise attenuation (for Year 2016).
2. ACT Noise Criteria
Residential & Community Facilities L_{A10} (18hr) 63dB(A)
Private Open Space 58dB(A)
Commercial Facilities 75dB(A)
3. AIS Residences Noise Criteria based on Fitch Report
L_{Aeq}(1Hr) 47.5 dB(A)



Eastern Alignment Comments:

1. Less impact on AIS Residences than Western Alignment
2. All predicted noise levels are within ACT and Fitch criteria
3. Noise impacts could be further reduced using mitigation measures
4. This alignment has more impact on O'Connor Ridge and Canberra Stadium.
5. Prevailing north-westerlies may further reduce impact on AIS Precinct.