



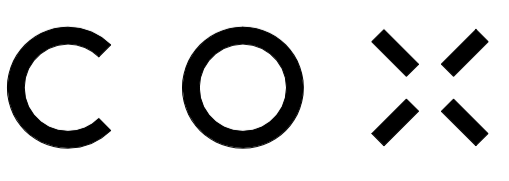
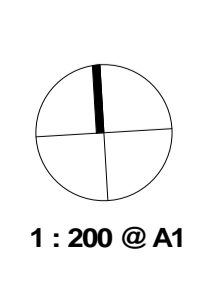
### PARKING SCHEDULE

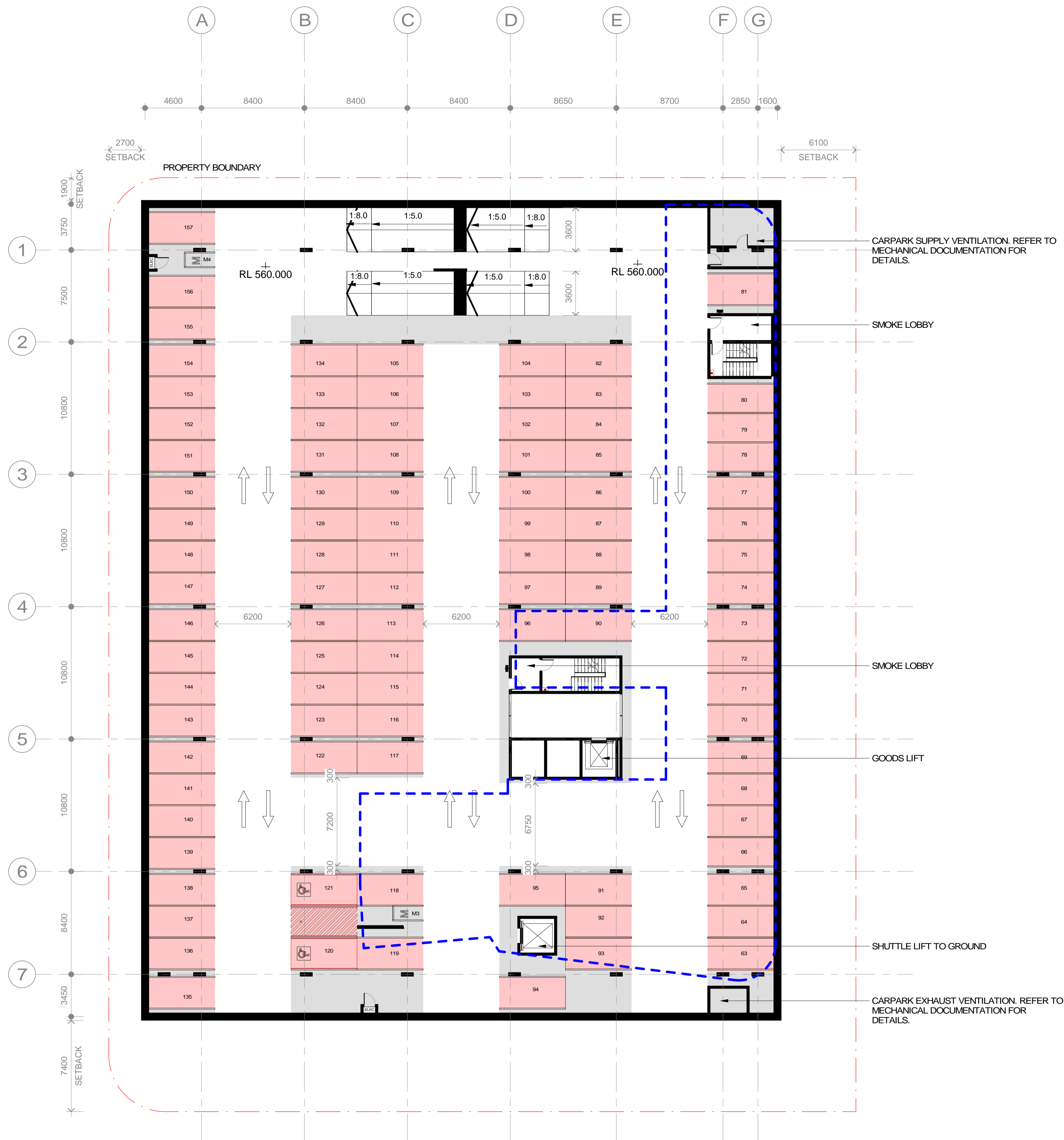
CAR PARK TYPE	NUMBER OF SPACES
<b>BASEMENT 3</b>	
5400x2400 @ 90°	4
5400x2600 @ 90°	94
Motorcycle Bay	2
	100
<b>BASEMENT 2</b>	
5400x2400 @ 90°	4
5400x2600 @ 90°	89
5400x2600 @ 90° Accessible	2
Motorcycle Bay	2
	97
<b>BASEMENT 1</b>	
5400x2600 @ 90°	58
5400x2600 @ 90° Accessible	4
Motorcycle Bay	2
	64
<b>Grand total</b>	<b>261</b>

- LEGEND:**
- FFL X.XXX PROPOSED FINISHED FLOOR LEVEL (METRES) ABOVE DATUM.
  - FSL X.XXX PROPOSED FINISHED SLAB LEVEL (METRES) ABOVE DATUM.
  - + RL X.XXX PROPOSED REDUCED SPOT LEVEL (METRES) ABOVE DATUM.
  - ROOM NAME ROOM TAG WITH NAME
  - 2000 GENERAL DIMENSIONS (DIAGONAL)
  - 2000 DIMENSIONS TO GRID (DOT)
  - EXISTING BUILDING
  - TREES/PLANTING REFER TO LANDSCAPE ARCHITECT'S DRAWINGS
  - PROPERTY BOUNDARY
  - RL566.250 ON GROUND

- GENERAL NOTES:**
- TO BE READ IN CONJUNCTION WITH LANDSCAPE DRAWINGS.
  - REFER TO HYDRAULIC DOCUMENTATION.
  - RLS SHOWN ARE INDICATIVE. SUBJECT TO DETAIL DESIGN & FINAL FOOTPATH / CIVIL LEVELS.
  - ALL LIFTS TO BE AS 1738.12 COMPLIANT.
  - STAIRWAYS AND RAMP TO COMPLY WITH AS1428.1 (2009).
  - ROOF ANCHOR SYSTEM IN ACCORDANCE WITH AUSTRALIAN STANDARDS. TO BE INSTALLED FOR FACADE AND ROOF MAINTENANCE.
  - ALL BASEMENT AREAS TO COMPLY WITH RELEVANT SECTIONS OF THE BCA & AUSTRALIAN STANDARDS.
  - BICYCLE RACKS FOR VISITORS SUPPLIED AT GROUND LEVEL AS INDICATED IN LANDSCAPE PLANS.

- ACCESSIBLE NOTES:**
- ALL HANDRAILS AND GRABRAILS TO MEET AS1428.1
  - ACCESSIBLE SANITARY FACILITIES TO MEET AS1428.1
  - TACTILE GROUND SURFACE INDICATORS TO BE INSTALLED ON THE ACCESSIBLE PATH OF TRAVEL IN ACCORDANCE WITH AS1428.4
  - ALL EXTERNAL PAVING AND GROUND SURFACES TO THE ACCESSIBLE PATH OF TRAVEL TO MEET AS4586 FOR SLIP RESISTANCE ALL STAIRWELLS TO COMPLY WITH THE BUILDING CODE OF AUSTRALIA, INCLUDING TACTILE INDICATORS TO END OF FLIGHTS OF STAIRS AND CONTRASTING SLIP RESISTANT NOSING STRIPS.
  - LIGHTING ALONG THE ACCESSIBLE PATH OF TRAVEL TO BE INSTALLED IN ACCORDANCE WITH AS1428.1, AS1680, AS1158.3.
  - SIGNAGE TO MEET AS1428.1 TO IDENTIFY THE ACCESSIBLE PATH OF TRAVEL, INCLUDING BRAILLE AND TACTILE SIGNAGE. REFER SIGNAGE PLAN
  - REFER TO CARPARKING PLANS FOR ACCESSIBLE CARPARKING SPACES.





### PARKING SCHEDULE

CAR PARK TYPE	NUMBER OF SPACES
<b>BASEMENT 3</b>	
5400x2400 @ 90°	4
5400x2600 @ 90°	94
Motorcycle Bay	2
	100
<b>BASEMENT 2</b>	
5400x2400 @ 90°	4
5400x2600 @ 90°	89
5400x2600 @ 90° Accessible	2
Motorcycle Bay	2
	97
<b>BASEMENT 1</b>	
5400x2600 @ 90°	58
5400x2600 @ 90° Accessible	4
Motorcycle Bay	2
	64
<b>Grand total</b>	<b>261</b>

- LEGEND:**
- FFL X.XXX PROPOSED FINISHED FLOOR LEVEL (METRES) ABOVE DATUM.
  - FSL X.XXX PROPOSED FINISHED SLAB LEVEL (METRES) ABOVE DATUM.
  - + RL X.XXX PROPOSED REDUCED SPOT LEVEL (METRES) ABOVE DATUM.
  - ROOM NAME ROOM TAG WITH NAME
  - 2000 GENERAL DIMENSIONS (DIAGONAL)
  - 2000 DIMENSIONS TO GRID (DOT)
  - EXISTING BUILDING
  - TREES/PLANTING REFER TO LANDSCAPE ARCHITECT'S DRAWINGS
  - PROPERTY BOUNDARY
  - RL566.250 ON GROUND

- GENERAL NOTES:**
- TO BE READ IN CONJUNCTION WITH LANDSCAPE DRAWINGS.
  - REFER TO HYDRAULIC DOCUMENTATION.
  - RLS SHOWN ARE INDICATIVE. SUBJECT TO DETAIL DESIGN & FINAL FOOTPATH / CIVIL LEVELS.
  - ALL LIFTS TO BE AS 1736.12 COMPLIANT.
  - STAIRWAYS AND RAMP TO COMPLY WITH AS1428.1 (2009).
  - ROOF ANCHOR SYSTEM IN ACCORDANCE WITH AUSTRALIAN STANDARDS. TO BE INSTALLED FOR FACADE AND ROOF MAINTENANCE.
  - ALL BASEMENT AREAS TO COMPLY WITH RELEVANT SECTIONS OF THE BCA & AUSTRALIAN STANDARDS.
  - BICYCLE RACKS FOR VISITORS SUPPLIED AT GROUND LEVEL AS INDICATED IN LANDSCAPE PLANS.
- ACCESSIBLE NOTES:**
- ALL HANDRAILS AND GRABRAILS TO MEET AS1428.1  
 ACCESSIBLE SANITARY FACILITIES TO MEET AS1428.1  
 TACTILE GROUND SURFACE INDICATORS TO BE INSTALLED ON THE ACCESSIBLE PATH OF TRAVEL IN ACCORDANCE WITH AS1428.4
- ALL EXTERNAL PAVING AND GROUND SURFACES TO THE ACCESSIBLE PATH OF TRAVEL TO MEET AS4586 FOR SLIP RESISTANCE ALL STAIRWELLS TO COMPLY WITH THE BUILDING CODE OF AUSTRALIA, INCLUDING TACTILE INDICATORS TO END OF FLIGHTS OF STAIRS AND CONTRASTING SLIP RESISTANT NOSING STRIPS.
- LIGHTING ALONG THE ACCESSIBLE PATH OF TRAVEL TO BE INSTALLED IN ACCORDANCE WITH AS1428.1, AS1680, AS1158.3.
- SIGNAGE TO MEET AS1428.1 TO IDENTIFY THE ACCESSIBLE PATH OF TRAVEL, INCLUDING BRAILLE AND TACTILE SIGNAGE. REFER SIGNAGE PLAN
- REFER TO CARPARKING PLANS FOR ACCESSIBLE CARPARKING SPACES.



### PARKING SCHEDULE

CAR PARK TYPE	NUMBER OF SPACES
<b>BASEMENT 3</b>	
5400x2400 @ 90°	4
5400x2600 @ 90°	94
Motorcycle Bay	2
	100
<b>BASEMENT 2</b>	
5400x2400 @ 90°	4
5400x2600 @ 90°	89
5400x2600 @ 90° Accessible	2
Motorcycle Bay	2
	97
<b>BASEMENT 1</b>	
5400x2600 @ 90°	58
5400x2600 @ 90° Accessible	4
Motorcycle Bay	2
	64
<b>Grand total</b>	<b>261</b>

- LEGEND:**
- FFL X.XXX PROPOSED FINISHED FLOOR LEVEL (METRES) ABOVE DATUM.
  - FSL X.XXX PROPOSED FINISHED SLAB LEVEL (METRES) ABOVE DATUM.
  - + RL X.XXX PROPOSED REDUCED SPOT LEVEL (METRES) ABOVE DATUM.
  - ROOM NAME ROOM TAG WITH NAME
  - 2000 GENERAL DIMENSIONS (DIAGONAL)
  - 2000 DIMENSIONS TO GRID (DOT)
  - EXISTING BUILDING
  - TREES/PLANTING REFER TO LANDSCAPE ARCHITECT'S DRAWINGS
  - PROPERTY BOUNDARY
  - RL566.250 ON GROUND

- GENERAL NOTES:**
- TO BE READ IN CONJUNCTION WITH LANDSCAPE DRAWINGS.
  - REFER TO HYDRAULIC DOCUMENTATION.
  - RLS SHOWN ARE INDICATIVE. SUBJECT TO DETAIL DESIGN & FINAL FOOTPATH / CIVIL LEVELS.
  - ALL LIFTS TO BE AS 1738.12 COMPLIANT.
  - STAIRWAYS AND RAMPS TO COMPLY WITH AS1428.1 (2009).
  - ROOF ANCHOR SYSTEM IN ACCORDANCE WITH AUSTRALIAN STANDARDS. TO BE INSTALLED FOR FACADE AND ROOF MAINTENANCE.
  - ALL BASEMENT AREAS TO COMPLY WITH RELEVANT SECTIONS OF THE BCA & AUSTRALIAN STANDARDS.
  - BICYCLE RACKS FOR VISITORS SUPPLIED AT GROUND LEVEL AS INDICATED IN LANDSCAPE PLANS.

- ACCESSIBLE NOTES:**
- ALL HANDRAILS AND GRABRAILS TO MEET AS1428.1
  - ACCESSIBLE SANITARY FACILITIES TO MEET AS1428.1
  - TACTILE GROUND SURFACE INDICATORS TO BE INSTALLED ON THE ACCESSIBLE PATH OF TRAVEL IN ACCORDANCE WITH AS1428.4
- ALL EXTERNAL PAVING AND GROUND SURFACES TO THE ACCESSIBLE PATH OF TRAVEL TO MEET AS4586 FOR SLIP RESISTANCE ALL STAIRWELLS TO COMPLY WITH THE BUILDING CODE OF AUSTRALIA, INCLUDING TACTILE INDICATORS TO END OF FLIGHTS OF STAIRS AND CONTRASTING SLIP RESISTANT NOSING STRIPS.
- LIGHTING ALONG THE ACCESSIBLE PATH OF TRAVEL TO BE INSTALLED IN ACCORDANCE WITH AS1428.1, AS1680, AS1158.3.
- SIGNAGE TO MEET AS1428.1 TO IDENTIFY THE ACCESSIBLE PATH OF TRAVEL, INCLUDING BRAILLE AND TACTILE SIGNAGE. REFER SIGNAGE PLAN
- REFER TO CARPARKING PLANS FOR ACCESSIBLE CARPARKING SPACES.

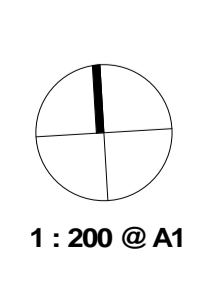
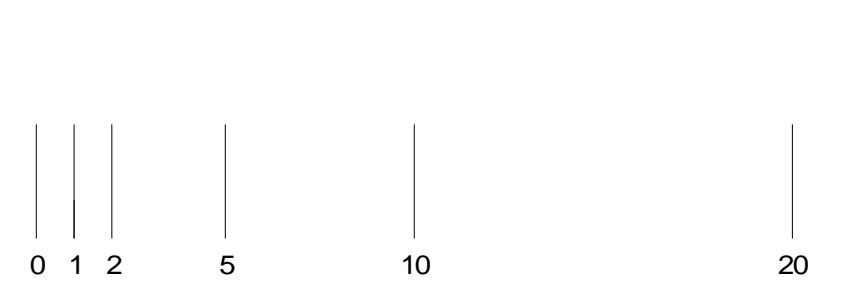
Project Name  
**40 BRISBANE AVENUE**

Drawing Number  
**WA-21-04**

Drawing Title  
**BASEMENT 1**

Date: 02.07.21  
Revision: 5

Rev	Description	By	Date
1	Consultant Coordination	ZT	10.06.21
2	Draft WA	ZT	17.06.21
3	Draft WA	ZT	28.06.21
4	DRAFT WA	ZT	01.07.21
5	WORKS APPROVAL	ZT	02.07.21



Client  
**40BA**

© Cox Architecture PTY LTD  
1/19 Eastlake Parade  
Kingston ACT 2604 Australia  
T +612 6236 6255  
www.coxarchitecture.com.au

