

file name 306375CC002.dwg layout name CC002 plotted by Carl O'Hara
file location \\spiire.com.au\cadd\data\30\305532\Civil\ACAD\512 KP plot date 02/07/2021 1:35 PM Sheet 2 of 43 Sheets

DRAWING SCHEDULE			
REFERENCE	DESCRIPTION	REVISION	SHEET No.
CC001	COVER SHEET	B	1
CC002	DRAWING SCHEDULE	C	2
CC010	GENERAL ARRANGEMENT PLAN	D	3
CC015	EXISTING SERVICES PLAN	B	4
CC020	ROAD LAYOUT AND STAGING PLAN	D	5
CC040	PAVEMENT PLAN	D	6
CC041	PAVEMENT PLAN	D	7
CC060	TYPICAL CROSS SECTIONS SHEET 1	C	8
CC061	TYPICAL CROSS SECTIONS SHEET 2	D	9
CC062	TYPICAL CROSS SECTIONS SHEET 3	A	10
CC080	TYPICAL DETAILS SHEET 1	B	11
CC081	TYPICAL DETAILS SHEET 2	B	12
CC082	TYPICAL DETAILS SHEET 3	B	13
CC083	TYPICAL DETAILS SHEET 4	C	14
CC084	TYPICAL DETAILS SHEET 5	B	15
CC100	ROAD LONGITUDINAL SECTION	C	16
CC140	ROAD CROSS SECTIONS SHEET 1	D	17
CC141	ROAD CROSS SECTIONS SHEET 2	C	18
CC200	GRADING PLAN SHEET 1	D	19
CC201	GRADING PLAN SHEET 2	C	20
CC260	INTERSECTION DETAILS LAYOUT PLAN	B	21
CC270	INTERSECTION DETAILS SHEET 1	C	22
CC350	FENCING PLAN	C	23
CC390	HYDRAULICS NOTES AND LEGEND	C	24
CC400	STORMWATER PLAN SHEET 1	D	25
CC401	STORMWATER PLAN SHEET 2	C	26
CC410	STORMWATER LONGITUDINAL SECTIONS	D	27
CC420	STORMWATER DETAILS	C	28
CC421	STORMWATER DETAILS	C	29
CC440	SEWER AND WATER LAYOUT PLAN	C	30
CC450	SEWER AND WATER PLAN SHEET 1	D	31
CC451	SEWER AND WATER PLAN SHEET 2	E	32
CC500	TRENCH MANAGEMENT PLAN	D	33
CC502	TRENCH MANAGEMENT DETAILS	B	34
CC520	ENVIRONMENTAL MANAGEMENT CONCEPT PLAN	C	35
CC600	TRAFFIC CONTROL DEVICES SHEET 1	E	36
CC601	TRAFFIC CONTROL DEVICES SHEET 2	C	37
CC605	TRAFFIC CONTROL DEVICES DEMOLISH SHEET 1	B	38
CC606	TRAFFIC CONTROL DEVICES DEMOLISH SHEET 2	B	39
CC610	TRAFFIC CONTROL DEVICES LOOPS AND CABLES	A	40
CC612	TRAFFIC CONTROL DEVICES HARDWARE	A	41
CC615	CONCEPT TRAFFIC MANAGEMENT PLAN SHEET 1	C	42
CC616	CONCEPT TRAFFIC MANAGEMENT PLAN SHEET 2	B	43

LANDSCAPE DRAWING SCHEDULE		
REFERENCE	DESCRIPTION	REVISION
100	COVER SHEET	F
301	GENERAL ARRANGEMENT PLAN	S
401	PART PLAN A	E
402	PART PLAN B	F
403	PART PLAN C	F
404	PART PLAN D	F
501	SECTIONS	E
601	MATERIALS AND IMAGES	D

ELECTRICAL DRAWING SCHEDULE		
REFERENCE	DESCRIPTION	REVISION
118411-E1000	COVER SHEET - STAGE 2 - KNOWLES PLACE EXTENSION - ELECTRICAL SERVICES	02
118411-E1001	LEGEND AND SCOPE OF WORKS - STAGE 2 - KNOWLES PLACE EXTENSION - ELECTRICAL SERVICES	02
118411-E1201	KNOWLES PLACE EXTENSION - NEW STREET LIGHTING LAYOUT - ELECTRICAL SERVICES	02

C	BUILDING REVISION	LB	02-07-21
B	REISSUE - AMENDMENTS TO SUIT NEIGHBOURING BUILDING	LB	18-06-21
A	ISSUED FOR APPROVAL	MB	01-12-20
Rev	Amendments	Approved	Date



© Spiire Australia Pty Ltd All Rights Reserved
This document is produced by Spiire Australia Pty Ltd solely for the benefit of and use by the client in accordance with the terms of the retainer. Spiire Australia Pty Ltd does not and shall not assume any responsibility or liability whatsoever to any third party arising out of any use or reliance by third party on the content of this document.



Suite 5, 243 Northbourne Ave Lyneham 2602
Australian Capital Territory T 61 6102 1000
spiire.com.au ABN 55 050 029 635



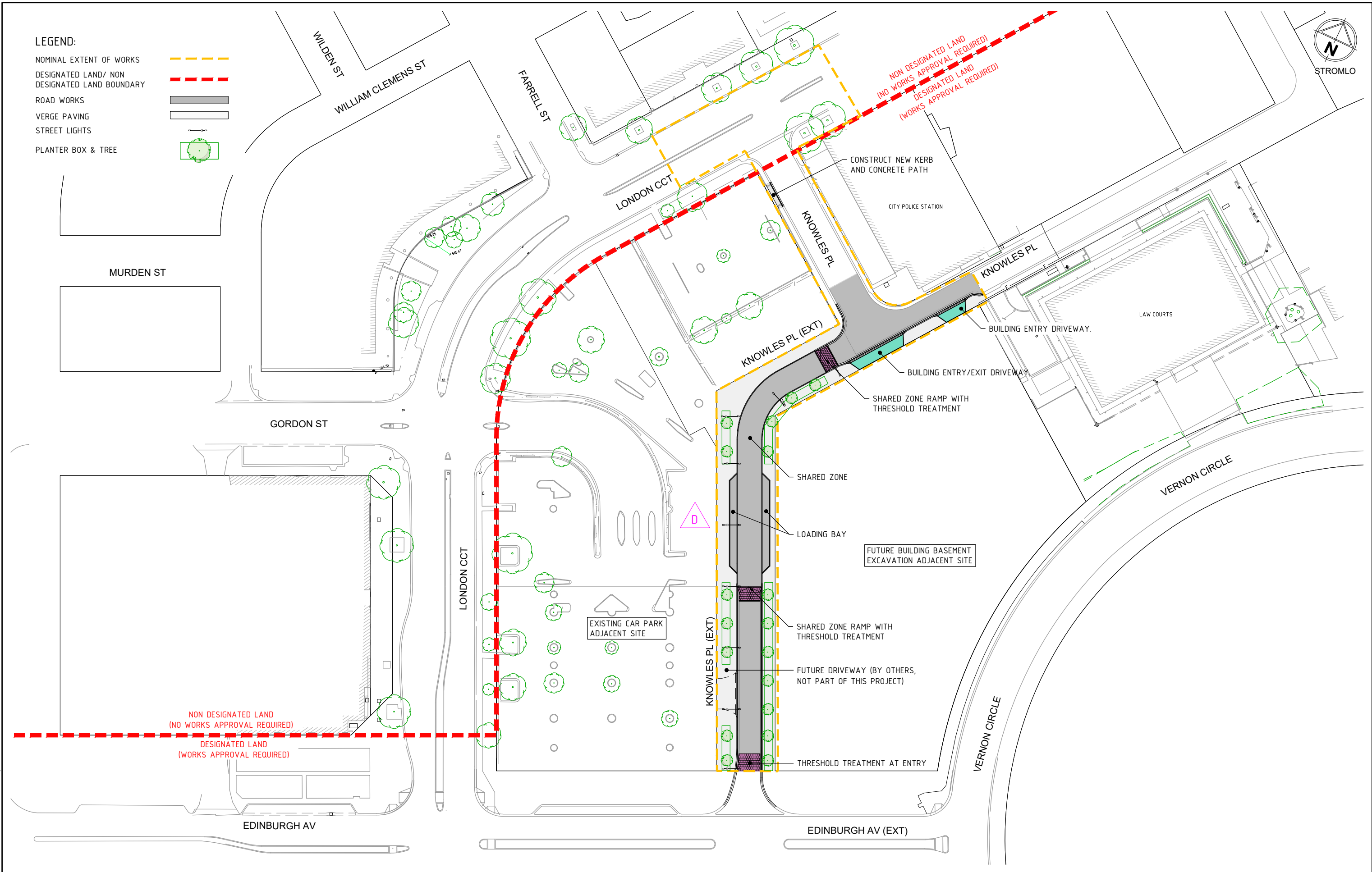
Designed CO	Checked LB
Authorised MB	Date 01-12-20

**SECTION 100 CANBERRA CITY
STAGE 2 (KNOWLES PL EXTENSION)
DRAWING SCHEDULE**

TCCS
MPG CONSTRUCTIONS

Drg No 306375CC002	Rev C
------------------------------	-----------------

file name: 306375CC010.dwg, layout name: CC010, plotted by: Carl O'Hara
file location: \\spire.com.au\cad\data\306375CC010.dwg, plot date: 02/07/2021 13:55 PM, sheet: 3 of 43 sheets



Rev	Amendments	Approved	Date
D	BUILDING REVISION - PARKING ADJUSTED	LB	02-07-21
C	REISSUE - AMENDMENTS TO SUIT NEIGHBOURING BUILDING	LB	18-06-21
B	BUILDING REVISIONS	LB	07-05-21
A	ISSUED FOR APPROVAL	MB	01-12-20

1:500@A1
SCALE
1:1000@A3



© Spiire Australia Pty Ltd All Rights Reserved
This document is produced by Spiire Australia Pty Ltd solely for the benefit of and use by the client in accordance with the terms of the retainer. Spiire Australia Pty Ltd does not and shall not assume any responsibility or liability whatsoever to any third party arising out of any use or reliance by third party on the content of this document.



Suite 5, 243 Northbourne Ave Lyneham 2602
Australian Capital Territory T 61 6102 1000
spiire.com.au ABN 55 050 029 635



Designed
CO
Authorised
MB
Checked
LB
Date
01-12-20

SECTION 100 CANBERRA CITY
STAGE 2 (KNOWLES PL EXTENSION)
GENERAL ARRANGEMENT PLAN

TCCS
MPG CONSTRUCTIONS

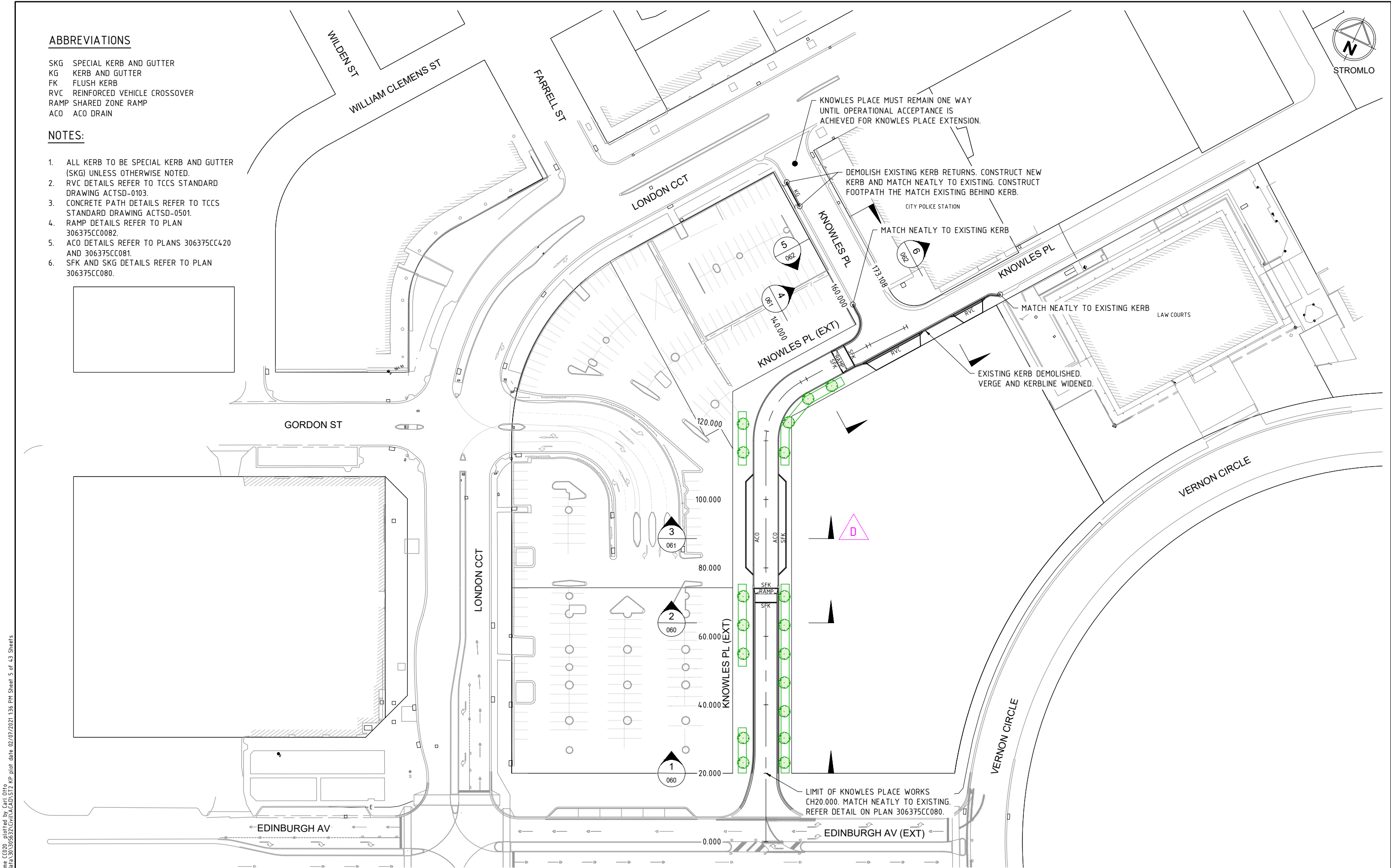
Drg No
306375CC010
Rev
D

ABBREVIATIONS

SKG SPECIAL KERB AND GUTTER
KG KERB AND GUTTER
FK FLUSH KERB
RVC REINFORCED VEHICLE CROSSOVER
RAMP SHARED ZONE RAMP
ACO ACO DRAIN

NOTES:

1. ALL KERB TO BE SPECIAL KERB AND GUTTER (SKG) UNLESS OTHERWISE NOTED.
2. RVC DETAILS REFER TO TCCS STANDARD DRAWING ACTSD-0103.
3. CONCRETE PATH DETAILS REFER TO TCCS STANDARD DRAWING ACTSD-0501.
4. RAMP DETAILS REFER TO PLAN 306375CC0082.
5. ACO DETAILS REFER TO PLANS 306375CC420 AND 306375CC081.
6. SFK AND SKG DETAILS REFER TO PLAN 306375CC080.



file name 306375CC020.dwg layout name CC020 - plotted by Carl O'Ho file location \\spire.com.au\data\306375CC020.dwg plot date 02/07/2021 136 PM Sheet 5 of 43 Sheets

D	BUILDING REVISION - PARKING ADJUSTED	LB	02-07-21
C	REISSUE - AMENDMENTS TO SUIT NEIGHBOURING BUILDING	LB	18-06-21
B	BUILDING REVISIONS		
A	ISSUED FOR APPROVAL	MB	01-12-20
Rev	Amendments	Approved	Date

1:500@ A1
SCALE
1:1000@ A3



© Spiire Australia Pty Ltd All Rights Reserved
This document is produced by Spiire Australia Pty Ltd solely for the benefit of and use by the client in accordance with the terms of the retainer. Spiire Australia Pty Ltd does not and shall not assume any responsibility or liability whatsoever to any third party arising out of any use or reliance by third party on the content of this document.



Suite 5, 243 Northbourne Ave Lyneham 2602
Australian Capital Territory T 61 6102 1000
spiire.com.au ABN 55 050 029 635



Designed	CO	Checked	LB
Authorised	MB	Date	01-12-20

SECTION 100 CANBERRA CITY
STAGE 2 (KNOWLES PL EXTENSION)
ROAD LAYOUT AND STAGING PLAN

TCCS
MPG CONSTRUCTIONS

Drg No	Rev
306375CC020	D

LEGEND:

VERGE PAVING	
DRIVEWAY PAVING	
ROAD PAVEMENT TYPE 1	
ROAD PAVEMENT TYPE 2	
ROAD PAVEMENT TYPE 3	
ROAD PAVEMENT TYPE 4	
ROAD PAVEMENT TYPE 5	

	- 200 N32 CONCRETE SL82 MESH 50 COVER TOP AND BOTTOM PATTERN TO LANDSCAPE ARCHITECT PLANS
	- 150 DGB20

(CBR15%)
ROAD PAVEMENT TYPE 1

	- AC14HD (VARIES FROM 45 TO 100) - TACK COAT - EXISTING PAVEMENT
--	---

ROAD PAVEMENT TYPE 3

	- PAVERS (GRANITE SETS) TO LANDSCAPE ARCHITECT PLANS - LATICRETE '4237' ADHESIVE - 200 N32 CONCRETE SL82 MESH 50 COVER TOP AND BOTTOM - 100DGB20
--	---

(CBR15%)
ROAD PAVEMENT TYPE 5

	- PAVERS TO LANDSCAPE ARCHITECT PLANS - LATICRETE '4237' ADHESIVE - 150 N32 CONCRETE SL82 MESH 50 TOP COVER - 100DGB20
--	--

(CBR15%)
VERGE PAVING

	- 45 AC14HD - 150 AC20HD - PRIME - 150 DGB20
--	---

(CBR15%)
ROAD PAVEMENT TYPE 2

	- 45 AC14HD - 105 AC20HD - PRIME - 100DGB20
--	--

(CBR>5%)
ROAD PAVEMENT TYPE 4

	- 175 N32 CONCRETE SL82 MESH 50 TOP COVER - 100DGB20
--	--

(CBR15%)
DRIVEWAY PAVING

	- 150 N32 CONCRETE SL82 MESH 50 TOP COVER - 100DGB20
--	--

(CBR15%)
VERGE CONCRETE - PATTERN TO LANDSCAPE ARCHITECT PLANS

NOTES:

- VERGE PAVING TYPE, PATTERN AND EXTENT REFER TO LANDSCAPE ARCHITECT PLANS.
- SHARED ZONE CONCRETE PAVEMENT TO BE COLOURED OXIDE. REFER TO LANDSCAPE ARCHITECT'S PLANS FOR PATTERNS AND COLOURS. JOINTING REFER TO DRAWING 306375CC041.
- DRIVEWAY CONCRETE PAVEMENT TO BE COLOURED OXIDE. REFER TO LANDSCAPE ARCHITECT'S PLANS FOR PATTERNS AND COLOURS. JOINTING REFER TO TCCS STANDARD DRAWING ACTSD-0702.

EDINBURGH AV

EDINBURGH AV (EXT)

FARRELL ST

LONDON CCT

KNOWLES PL

KNOWLES PL (EXT)

CITY POLICE STATION

KNOWLES PL

LAW COURTS

VERNON CIRCLE

PAVEMENT TYPE 4 EXTENDS INTO EXISTING PAVEMENT TYP. REFER 306375CC080 FOR DETAIL.

ASPHALTIC CONCRETE OVERLAY AT INTERSECTION. EXISTING PAVEMENT TO BE MILLED. REFER TO DRAWING 306375CC080 FOR DETAILS.



file name 306375CC040.dwg, layout name CC040, plotted by Carl Ott, file location \\spire.com.au\data\data\30\306375CC040.dwg, plot date 02/07/2021 13:36 PM, Sheet 6 of 43 Sheets

Rev	Amendments	Approved	Date
D	BUILDING REVISION - PARKING ADJUSTED	LB	02-07-21
C	REISSUE - AMENDMENTS TO SUIT NEIGHBOURING BUILDING	LB	18-06-21
B	BUILDING REVISIONS - PAVEMENT EXTENTS MODIFIED	LB	07-05-21
A	ISSUED FOR APPROVAL	MB	01-12-20

1:500@ A1
SCALE
1:1000@ A3



© Spiire Australia Pty Ltd All Rights Reserved
This document is produced by Spiire Australia Pty Ltd solely for the benefit of and use by the client in accordance with the terms of the retainer. Spiire Australia Pty Ltd does not and shall not assume any responsibility or liability whatsoever to any third party arising out of any use or reliance by third party on the content of this document.

spiire

Suite 5, 243 Northbourne Ave Lyneham 2602
Australian Capital Territory T 61 6102 1000
spiire.com.au ABN 55 050 029 635

morris
property group

Designed
CO
Authorised
MB

Checked
LB
Date
01-12-20

SECTION 100 CANBERRA CITY
STAGE 2 (KNOWLES PL EXTENSION)
PAVEMENT PLAN

TCCS
MPG CONSTRUCTIONS

Drg No
306375CC040

Rev
D

file name: 306375CC041.dwg, layout name: CC041, plotted by: Carl O'Ho,
file location: \\spiire.com.au\data\data\30\305632\Gru\ACAD\ST2 KP plot date: 02/07/2021 136 PM Sheet 7 of 43 Sheets

LEGEND:

- EXPANSION JOINT (EJ) ---
- DIAMOND DOWELED EXPANSION JOINT (DDEJ) ---
- CONTRACTION JOINT (CJ) ---

NOTES:

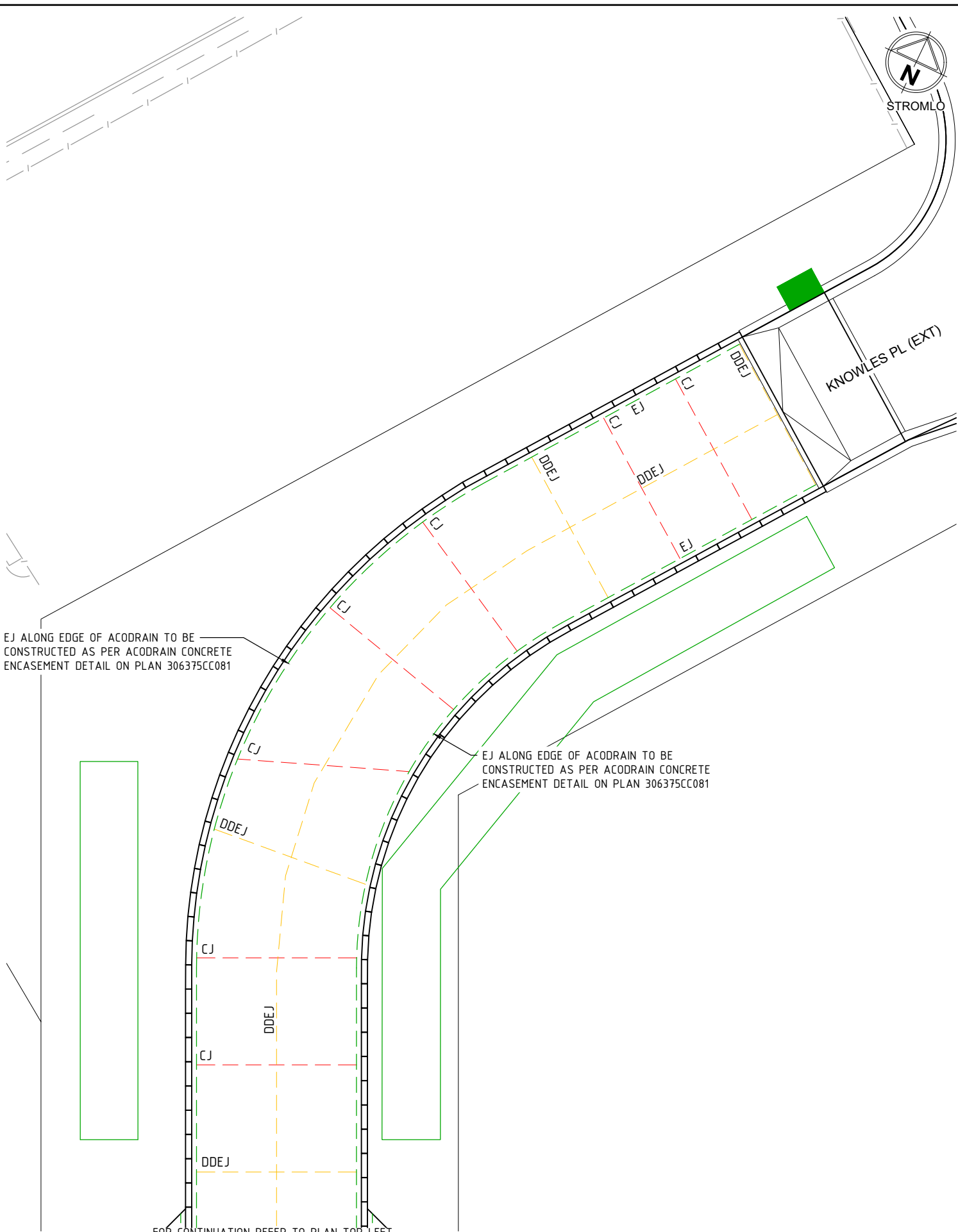
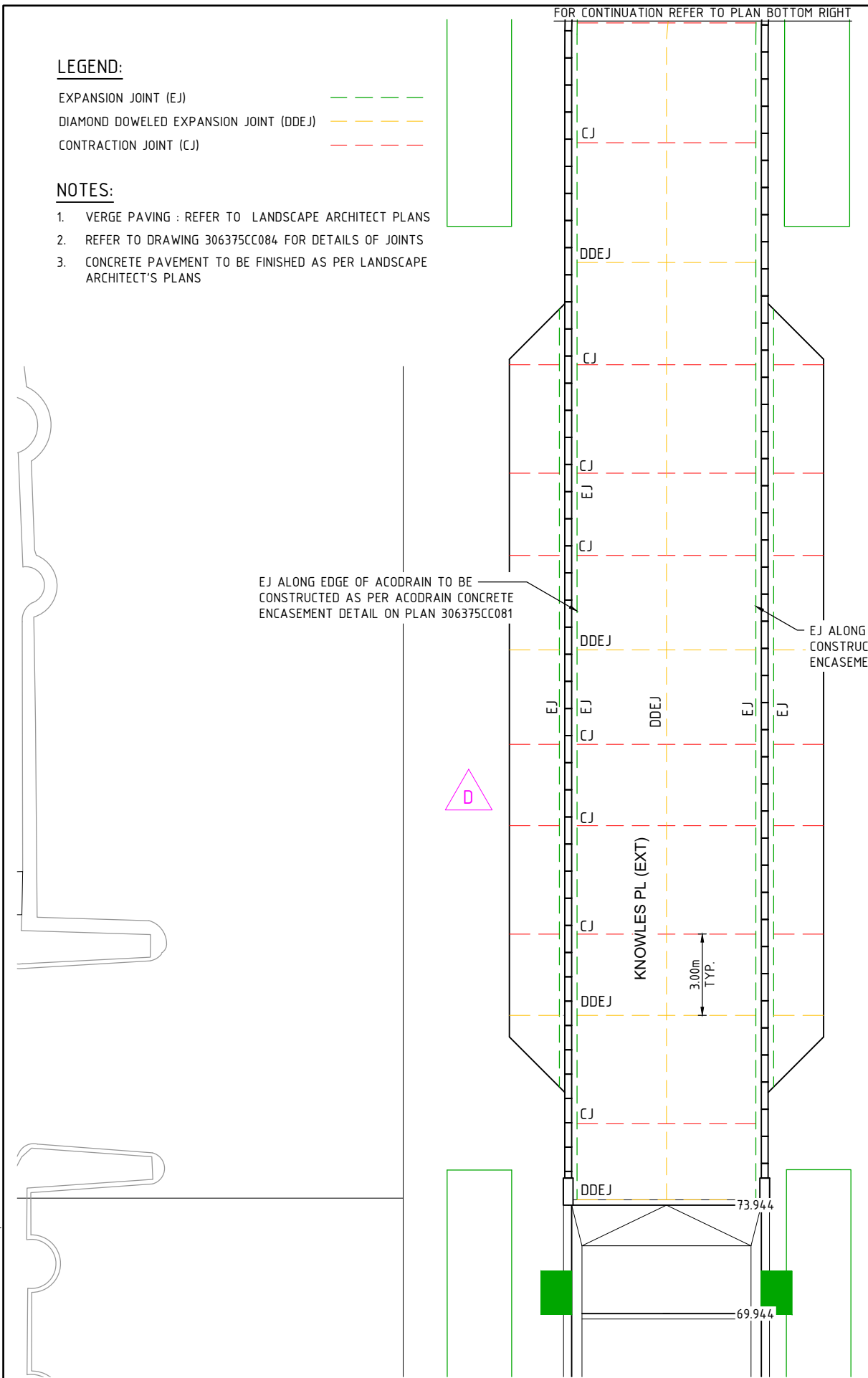
1. VERGE PAVING : REFER TO LANDSCAPE ARCHITECT PLANS
2. REFER TO DRAWING 306375CC084 FOR DETAILS OF JOINTS
3. CONCRETE PAVEMENT TO BE FINISHED AS PER LANDSCAPE ARCHITECT'S PLANS

EJ ALONG EDGE OF ACODRAIN TO BE
CONSTRUCTED AS PER ACODRAIN CONCRETE
ENCASEMENT DETAIL ON PLAN 306375CC081

EJ ALONG EDGE OF ACODRAIN TO BE
CONSTRUCTED AS PER ACODRAIN CONCRETE
ENCASEMENT DETAIL ON PLAN 306375CC081

EJ ALONG EDGE OF ACODRAIN TO BE
CONSTRUCTED AS PER ACODRAIN CONCRETE
ENCASEMENT DETAIL ON PLAN 306375CC081

EJ ALONG EDGE OF ACODRAIN TO BE
CONSTRUCTED AS PER ACODRAIN CONCRETE
ENCASEMENT DETAIL ON PLAN 306375CC081



Rev	Amendments	Approved	Date
D	BUILDING REVISION - PARKING ADJUSTED	LB	02-07-21
C	REISSUE - AMENDMENTS TO SUIT NEIGHBOURING BUILDING	LB	18-06-21
B	BUILDING REVISIONS - PAVEMENT EXTENTS MODIFIED	LB	07-05-21
A	ISSUED FOR APPROVAL	MB	01-12-20

1:100@A1
SCALE
1:200@A3



© Spiire Australia Pty Ltd All Rights Reserved
This document is produced by Spiire Australia Pty Ltd solely for the benefit of and use by the client in accordance with the terms of the retainer. Spiire Australia Pty Ltd does not and shall not assume any responsibility or liability whatsoever to any third party arising out of any use or reliance by third party on the content of this document.

spiire

Suite 5, 243 Northbourne Ave Lyneham 2602
Australian Capital Territory T 61 6102 1000
spiire.com.au ABN 55 050 029 635



Designed
CO
Authorised
MB

Checked
LB
Date
01-12-20

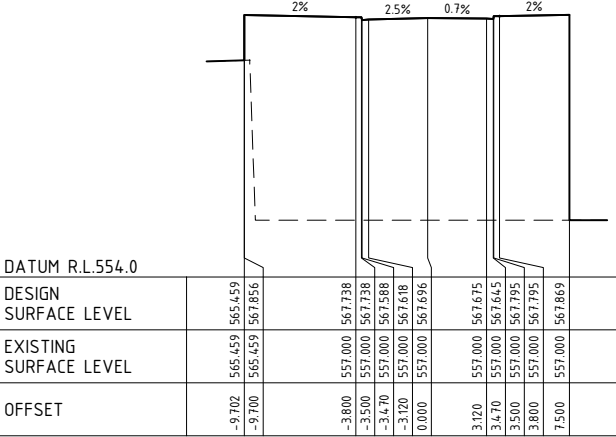
SECTION 100 CANBERRA CITY
STAGE 2 (KNOWLES PL EXTENSION)
PAVEMENT PLAN

TCCS
MPG CONSTRUCTIONS

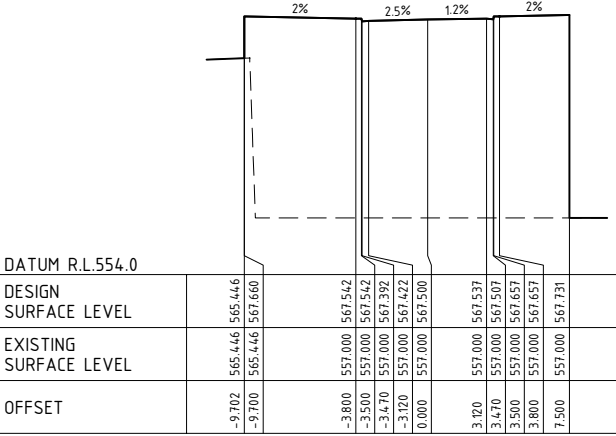
Drg No
306375CC041

Rev
D

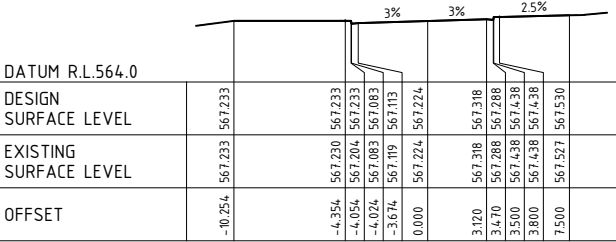
file name 306375CC140.dwg, layout name CC140, plotted by Carl OHP,
file location \\spiire.com.au\\caddata\\data\\30\\306375CC140\\CAD\\S12 KP plot date 02/07/2021 136 PM Sheet 17 of 43 Sheets



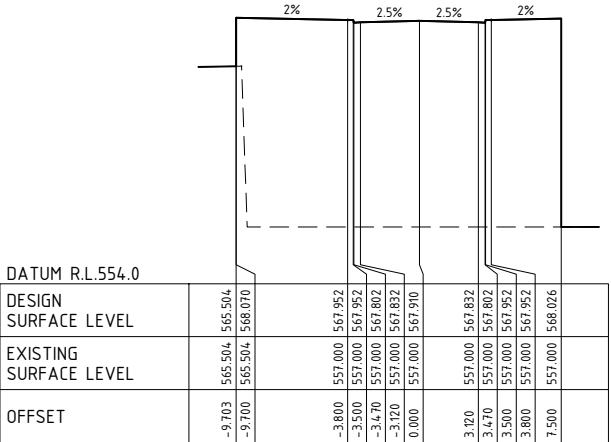
CH 40.00



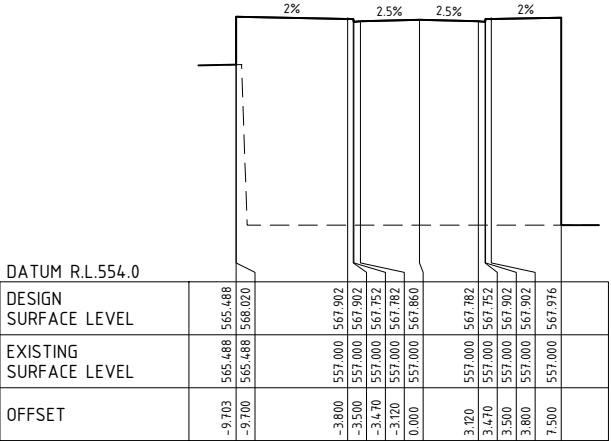
CH 30.00



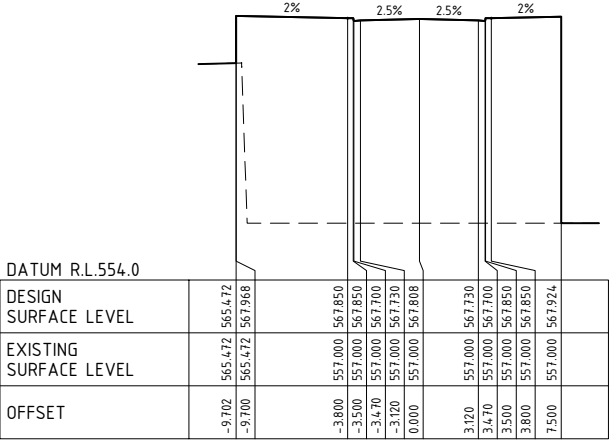
CH 20.00



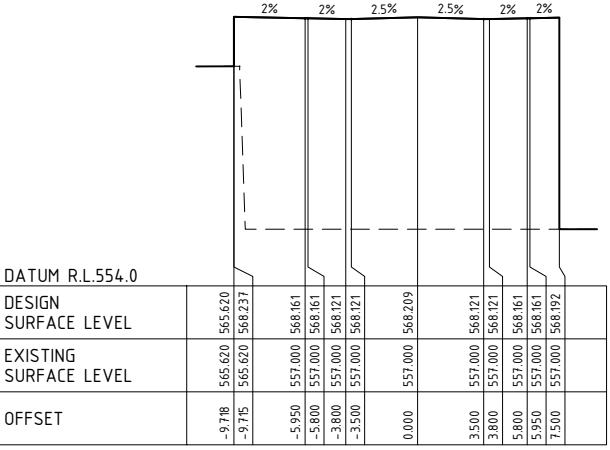
CH 70.00



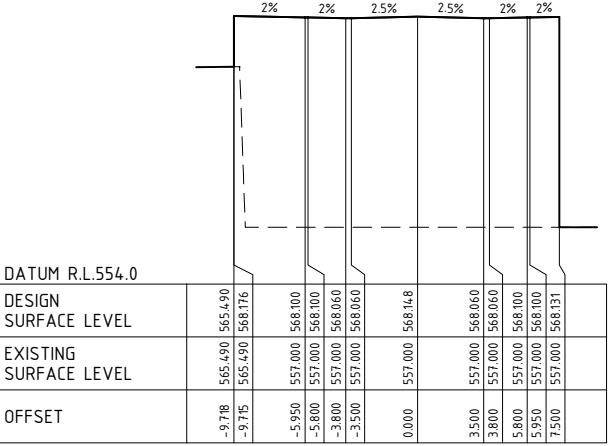
CH 60.00



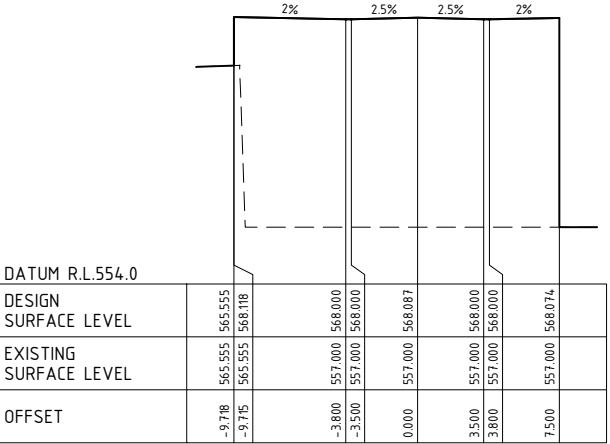
CH 50.00



CH 100.00



CH 90.00



CH 80.00

KNOWLES PLACE (EXT)

Rev	Amendments	Approved	Date
D	BUILDING REVISION - PARKING ADJUSTED	LB	02-07-21
C	REISSUE - AMENDMENTS TO SUIT NEIGHBOURING BUILDING	LB	18-06-21
B	BUILDING REVISIONS - DRIVEWAYS REMOVED, SHARE ZONE LENGTHENED	LB	07-05-21
A	ISSUED FOR APPROVAL	MB	01-12-20



© Spiire Australia Pty Ltd All Rights Reserved
This document is produced by Spiire Australia Pty Ltd solely for the benefit of and use by the client in accordance with the terms of the retainer. Spiire Australia Pty Ltd does not and shall not assume any responsibility or liability whatsoever to any third party arising out of any use or reliance by third party on the content of this document.



Suite 5, 243 Northbourne Ave Lyneham 2602
Australian Capital Territory T 61 6102 1000
spiire.com.au ABN 55 050 029 635



Designed
CO
Authorised
MB
Checked
LB
Date
01-12-20

SECTION 100 CANBERRA CITY
STAGE 2 (KNOWLES PL EXTENSION)
ROAD CROSS SECTIONS

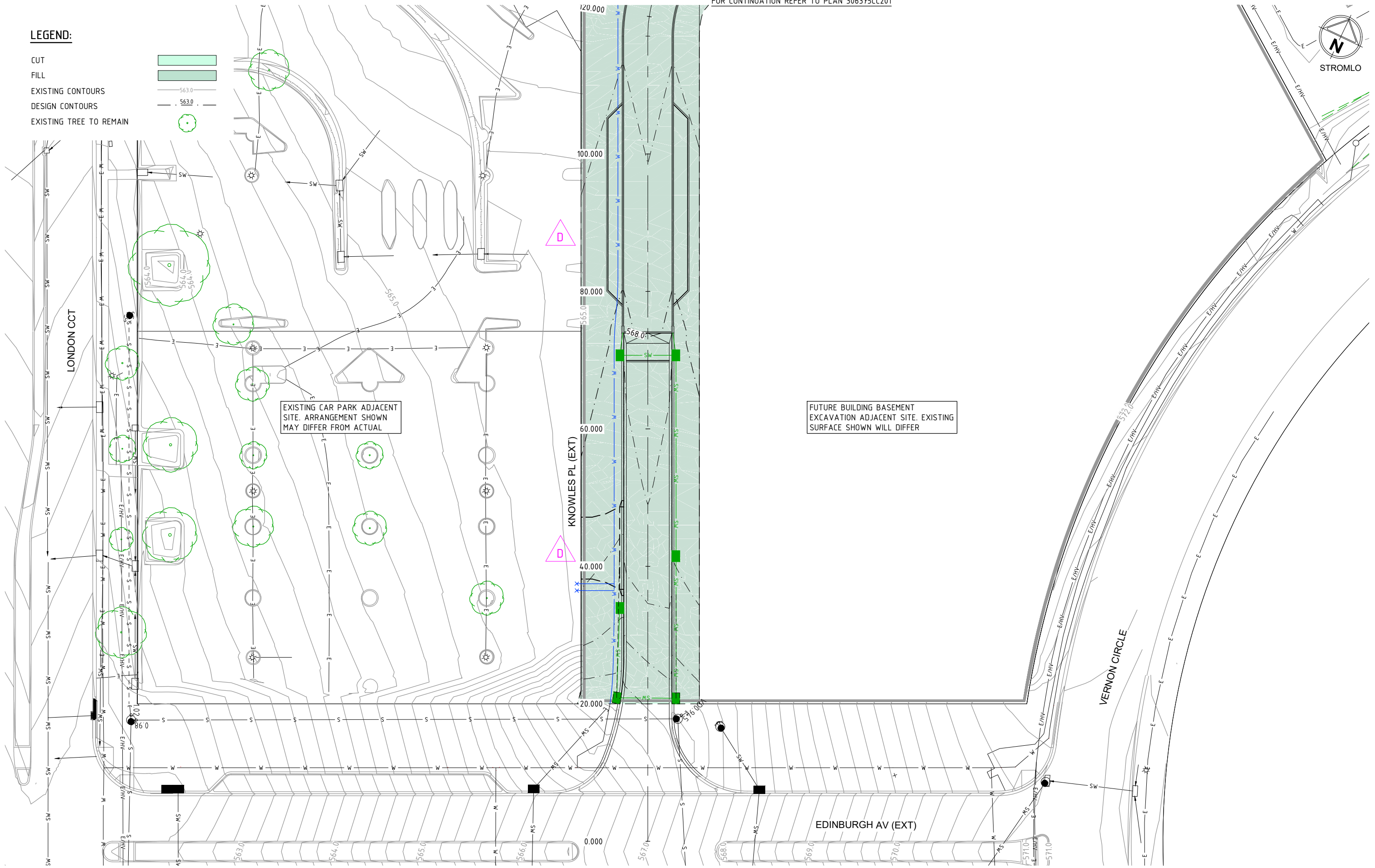
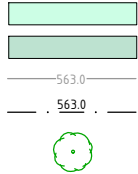
TCCS
MPG CONSTRUCTIONS

Drg No
306375CC140
Rev
D

file name 306375CC200.dwg layout name CC200 plotted by Carl Otto
file location \\spire.com.au\cadd\data\306375CC200\306375CC200.dwg

LEGEND:

- CUT
FILL
EXISTING CONTOURS
DESIGN CONTOURS
EXISTING TREE TO REMAIN



Rev	Description	Approved	Date
D	BUILDING REVISION - PARKING ADJUSTED	LB	02-07-21
C	REISSUE - AMENDMENTS TO SUIT NEIGHBOURING BUILDING	LB	18-06-21
B	BUILDING REVISIONS - DRIVEWAYS REMOVED, SHARE ZONE LENGTHENED	LB	07-05-21
A	ISSUED FOR APPROVAL	MB	01-12-20
Rev	Amendments	Approved	Date

1:250@A1
SCALE
1:500@A3



© Spiire Australia Pty Ltd All Rights Reserved
This document is produced by Spiire Australia Pty Ltd solely for the benefit of and use by the client in accordance with the terms of the retainer. Spiire Australia Pty Ltd does not and shall not assume any responsibility or liability whatsoever to any third party arising out of any use or reliance by third party on the content of this document.

spiire

Suite 5, 243 Northbourne Ave Lyneham 2602
Australian Capital Territory T 61 6102 1000
spiire.com.au ABN 55 050 029 635

morris
property group

Designed
CO
Authorised
MB

Checked
LB
Date
01-12-20

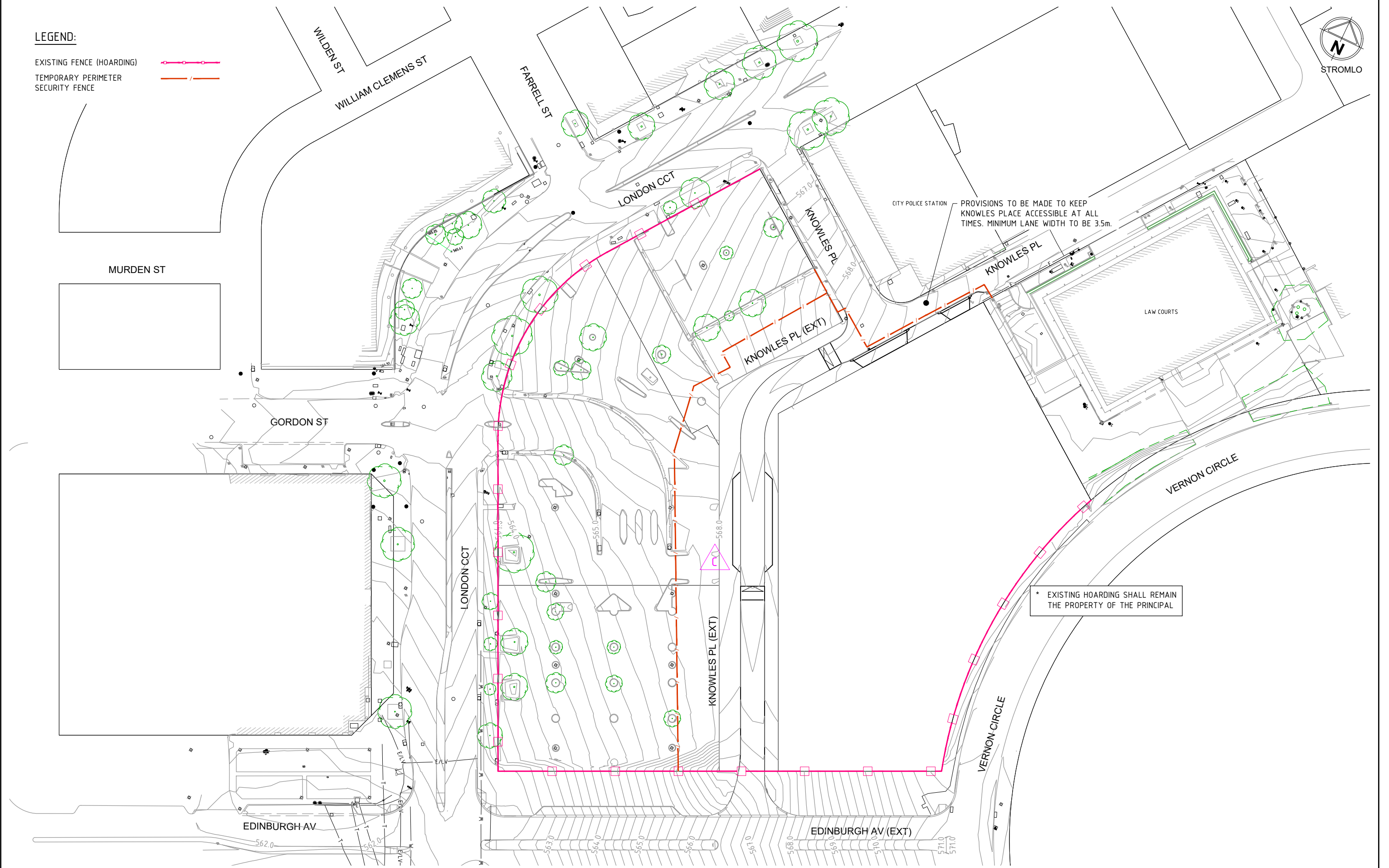
SECTION 100 CANBERRA CITY
STAGE 2 (KNOWLES PL EXTENSION)
GRADING PLAN
SHEET 1
TCCS
MPG CONSTRUCTIONS

Drg No
306375CC200
Rev
D

file name: 306375CC350.dwg, layout name: CC350, plotted by: Carl Otto,
file location: \\spire.com.au\data\306375CC350.dwg, plot date: 02/07/2021 13:36 PM, Sheet 23 of 43 Sheets

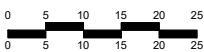
LEGEND:

EXISTING FENCE (HOARDING)
TEMPORARY PERIMETER
SECURITY FENCE



Rev	Amendments	Approved	Date
C	BUILDING REVISION - PARKING ADJUSTED	LB	02-07-21
B	REISSUE - AMENDMENTS TO SUIT NEIGHBOURING BUILDING	LB	18-06-21
A	ISSUED FOR APPROVAL	MB	01-12-20

1:500@A1
SCALE
1:1000@A3



© Spiire Australia Pty Ltd All Rights Reserved
This document is produced by Spiire Australia Pty Ltd solely for the benefit of and use by the client in accordance with the terms of the retainer. Spiire Australia Pty Ltd does not and shall not assume any responsibility or liability whatsoever to any third party arising out of any use or reliance by third party on the content of this document.

spiire

Suite 5, 243 Northbourne Ave Lyneham 2602
Australian Capital Territory T 61 6102 1000
spiire.com.au ABN 55 050 029 635

morris
property group

Designed
CO
Authorised
MB

Checked
LB
Date
01-12-20

SECTION 100 CANBERRA CITY
STAGE 2 (KNOWLES PL EXTENSION)
FENCING PLAN

TCCS
MPG CONSTRUCTIONS

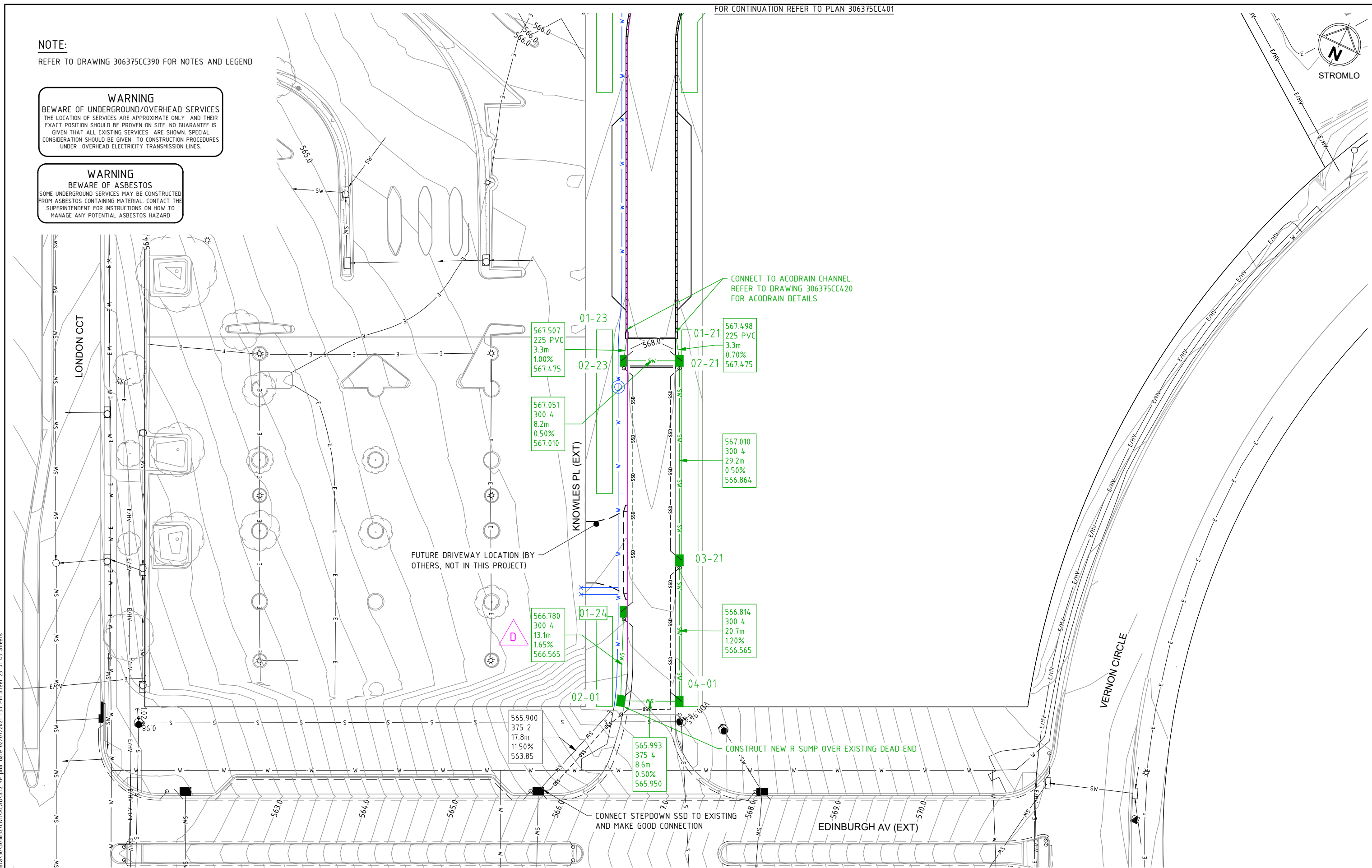
Drg No
306375CC350
Rev
C

REFER TO DRAWING 306375CC390 FOR NOTES AND LEGEND

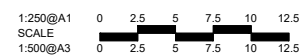
WARNING
BEWARE OF UNDERGROUND/OVERHEAD SERVICES
THE LOCATION OF SERVICES ARE APPROXIMATE ONLY AND THEIR
EXACT POSITION SHOULD BE PROVEN ON SITE. NO GUARANTEE IS
GIVEN THAT ALL EXISTING SERVICES ARE SHOWN. SPECIAL
CONSIDERATION SHOULD BE GIVEN TO CONSTRUCTION PROCEDURES
UNDER OVERHEAD ELECTRICITY TRANSMISSION LINES.

WARNING
BEWARE OF ASBESTOS
SOME UNDERGROUND SERVICES MAY BE CONSTRUCTED
FROM ASBESTOS CONTAINING MATERIAL. CONTACT THE
SUPERINTENDENT FOR INSTRUCTIONS ON HOW TO
MANAGE ANY POTENTIAL ASBESTOS HAZARD

FOR CONTINUATION REFER TO PLAN 306375CC401



D	BUILDING REVISION - PARKING ADJUSTED, 01-24 MOVED AND REALIGNED	LB	02-07-21
C	REISSUE - AMENDMENTS TO SUIT NEIGHBOURING BUILDING	LB	18-06-21
B	BUILDING REVISIONS - 01-20, 01-21, 02-20, 02-21 MOVED	LB	07-05-21
A	ISSUED FOR APPROVAL	MB	01-12-20
Rev	Amendments	Approved	Date



© Spiire Australia Pty Ltd All Rights Reserved
This document is produced by Spiire Australia Pty Ltd solely for the benefit of and use by the client in accordance with the terms of the retainer. Spiire Australia Pty Ltd does not and shall not assume any responsibility or liability whatsoever to any third party arising out of any use or reliance by third party on the content of this document.

spiire

Suite 5, 243 Northbourne Ave Lyneham 2602
Australian Capital Territory T 61 6102 1000
spiire.com.au ABN 55 050 029 635



Designed CO	
Authorised MB	

Checked
LB
Date
01-12-20

**SECTION 100 CANBERRA CITY
STAGE 2 (KNOWLES PL EXTENSION)
STORMWATER PLAN**

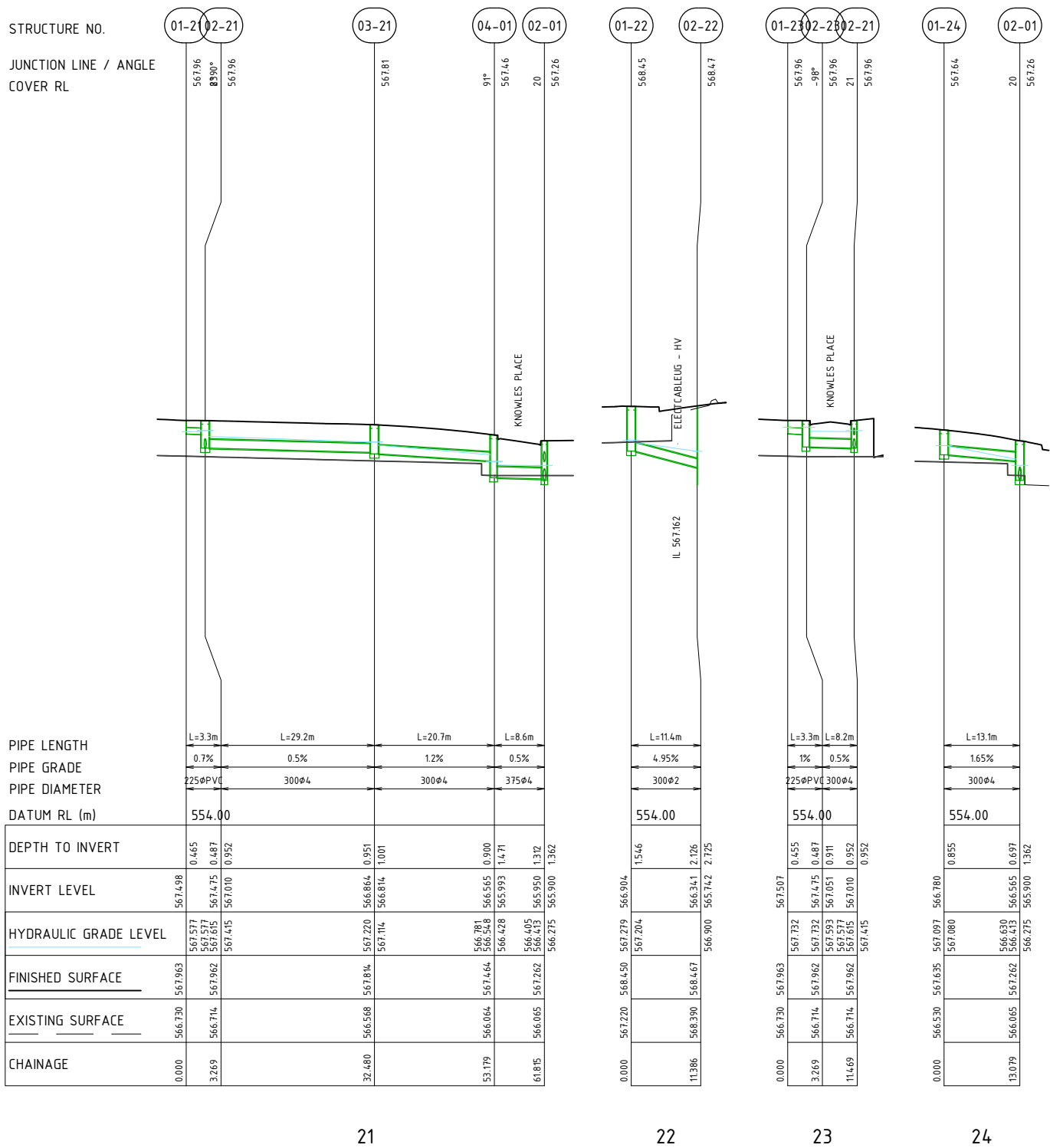
TCCS
MPG CONSTRUCTIONS

Drg No
306375CC400

Re

file name 306375CC408.dwg layout name CC400 plotted by Carl Otto
file location \\spire.com.au\candata\data\30\305632\Civil\ACAD\ST2 KP plot date 02/07/2021 1:37 PM Sheet 25 of 43 Sheets

file name: 306375CC410.dwg, layout name: CC410, plotted by: Carl O'Hara
file location: \\spire.com.au\cad\data\306375CC410.dwg, plot date: 02/07/2021 13:37 PM, sheet 27 of 43 sheets



STORMWATER STRUCTURE TABLE

No.	TYPE	EASTING	NORTHING	COVER RL	COVER TYPE
01-21	ACODRAIN CONNECTION	210554.91	603771.20	567.963	
01-22	R SUMP	210541.44	603842.73	568.450	
01-23	ACODRAIN CONNECTION	210548.35	603768.10	567.963	
01-24	SPECIAL R SUMP	210565.84	603732.13	567.635	
02-01	SPECIAL R SUMP	210570.22	603719.74	567.262	
02-21	SPECIAL R SUMP	210555.91	603768.09	567.962	
02-22	MANHOLE	210548.03	603851.99	568.467	
02-23	SPECIAL R SUMP	210550.12	603765.36	567.962	
03-21	SPECIAL R SUMP	210568.40	603741.69	567.814	
04-01	SPECIAL R SUMP	210577.52	603723.11	567.464	

STORMWATER STRUCTURE NOTES:

R SUMP = TYPE R SUMP INLET, REFER TCCS STD. DRG. ACTSD-0820
SETOUT TO CENTRE OF PIT, AT KERBLINE

SPECIAL R SUMP = TYPE R SUMP INLET WITH INTERNAL TREE WATERING PIT, REFER TCCS STD. DRG. ACTSD-0820 AND 306375CC421.
SETOUT TO CENTRE OF PIT, AT KERBLINE

MANHOLE = 1050Ø MANHOLE, REFER TCCS STD. DRG. ACTSD-0827
SETOUT TO CENTRE

DE = DEAD END. SETOUT TO CENTRE

NOTES :

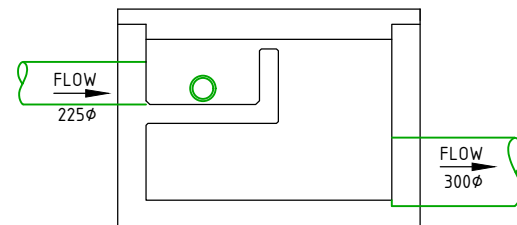
- ALL EXISTING PATH/KERB/MEDIAN AFFECTED BY PROPOSED WORKS TO BE REINSTATED AS FOLLOWS :
PATH - MIN. 100mm CONCRETE ON 150mm DGS20 BASE.
KERB - REFER TO TO DETAILS ON DWG. 306375CC080.

WARNING

BEWARE OF UNDERGROUND/OVERHEAD SERVICES
THE LOCATION OF SERVICES ARE APPROXIMATE ONLY AND THEIR EXACT POSITION SHOULD BE PROVEN ON SITE. NO GUARANTEE IS GIVEN THAT ALL EXISTING SERVICES ARE SHOWN. SPECIAL CONSIDERATION SHOULD BE GIVEN TO CONSTRUCTION PROCEDURES UNDER OVERHEAD ELECTRICITY TRANSMISSION LINES.

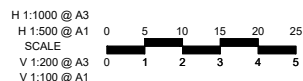
WARNING

BEWARE OF ASBESTOS
SOME UNDERGROUND SERVICES MAY BE CONSTRUCTED FROM ASBESTOS CONTAINING MATERIAL. CONTACT THE SUPERINTENDENT FOR INSTRUCTIONS ON HOW TO MANAGE ANY POTENTIAL ASBESTOS HAZARD



STRUCTURE 02-20 & 02-21 SCHEMATIC
NTS

Rev	Amendments	Approved	Date
D	BUILDING REVISION - PARKING ADJUSTED, 01-24 REALIGNED	LB	02-07-21
C	REISSUE - AMENDMENTS TO SUIT NEIGHBOURING BUILDING	LB	18-06-21
B	BUILDING REVISIONS - 01-20, 01-21, 02-20, 02-21 MOVED	LB	07-05-21
A	ISSUED FOR APPROVAL	MB	01-12-20



© Spiire Australia Pty Ltd All Rights Reserved
This document is produced by Spiire Australia Pty Ltd solely for the benefit of and use by the client in accordance with the terms of the retainer. Spiire Australia Pty Ltd does not and shall not assume any responsibility or liability whatsoever to any third party arising out of any use or reliance by third party on the content of this document.

spiire
Suite 5, 243 Northbourne Ave Lyneham 2602
Australian Capital Territory T 61 6102 1000
spiire.com.au ABN 55 050 029 635




Designed
CO
Authorised
MB

Checked
LB
Date
01-12-20

SECTION 100 CANBERRA CITY
STAGE 2 (KNOWLES PL EXTENSION)
STORMWATER LONGITUDINAL SECTIONS

TCCS
MPG CONSTRUCTIONS

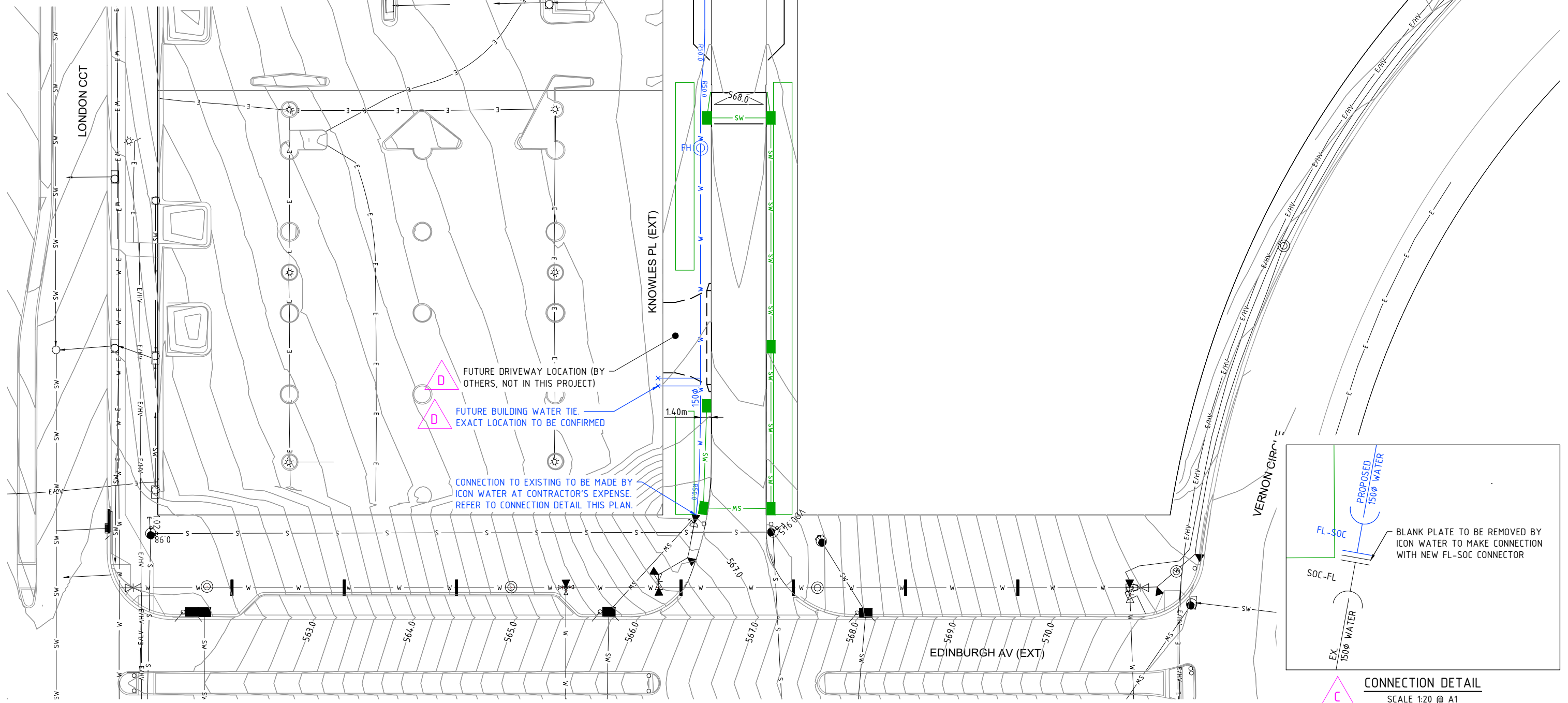
Drg No
306375CC410
Rev
D



1. REFER TO DRAWING 306375CC390 FOR NOTES AND LEGEND
2. CONTRACTOR MUST HYDROEXCAVATE EXISTING WATERMAINS AND CONFIRM ALIGNMENT IS SUITABLE FOR CONNECTION BY ICON WATER

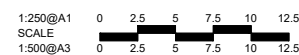
BEWARE OF UNDERGROUND/OVERHEAD SERVICES
THE LOCATION OF SERVICES ARE APPROXIMATE ONLY AND THEIR EXACT POSITION SHOULD BE PROVEN ON SITE. NO GUARANTEE IS GIVEN THAT ALL EXISTING SERVICES ARE SHOWN. SPECIAL CONSIDERATION SHOULD BE GIVEN TO CONSTRUCTION PROCEDURES UNDER OVERHEAD ELECTRICITY TRANSMISSION LINES.

BEWARE OF ASBESTOS
SOME UNDERGROUND SERVICES MAY BE CONSTRUCTED
FROM ASBESTOS CONTAINING MATERIAL. CONTACT THE
SUPERINTENDENT FOR INSTRUCTIONS ON HOW TO
MANAGE ANY POTENTIAL ASBESTOS HAZARD



SCALE 1:20 @ A1

D	BUILDING REVISION - PARKING ADJUSTED, TIES RELOCATED		LB	02-07-21	
C	REISSUE - AMENDMENTS TO SUIT NEIGHBOURING BUILDING		LB	18-06-21	
B	BUILDING REVISIONS - DRIVEWAYS REMOVED, TIES ADDED		LB	07-05-21	
A	ISSUED FOR APPROVAL		MB	01-12-20	
Rev	Amendments		Approved	Date	



© Spiire Australia Pty Ltd All Rights Reserved
This document is produced by Spiire Australia Pty Ltd solely for the benefit of and use by the client in accordance with the terms of the retainer. Spiire Australia Pty Ltd does not and shall not assume any responsibility or liability whatsoever to any third party arising out of any use or reliance by third party on the content of this document.

spiire

Suite 5, 243 Northbourne Ave Lyneham 2602
Australian Capital Territory T 61 6102 1000
spiire.com.au ABN 55 050 029 635



Designed CO	
Authorised MB	

Checked
LB
Date
01-12-20

**SECTION 100 CANBERRA CITY
STAGE 2 (KNOWLES PL EXTENSION)
SEWER AND WATER PLAN**

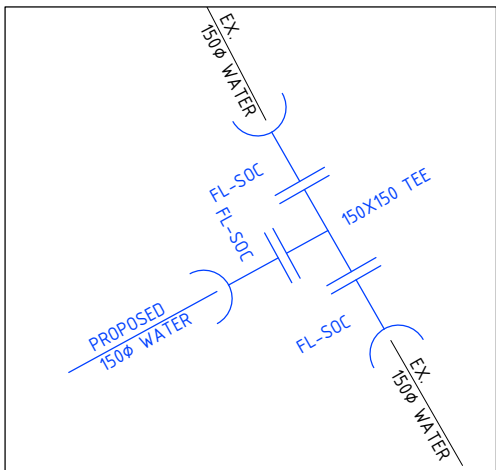
TCCS
MPG CONSTRUCTIONS

Drg No
306375CC450

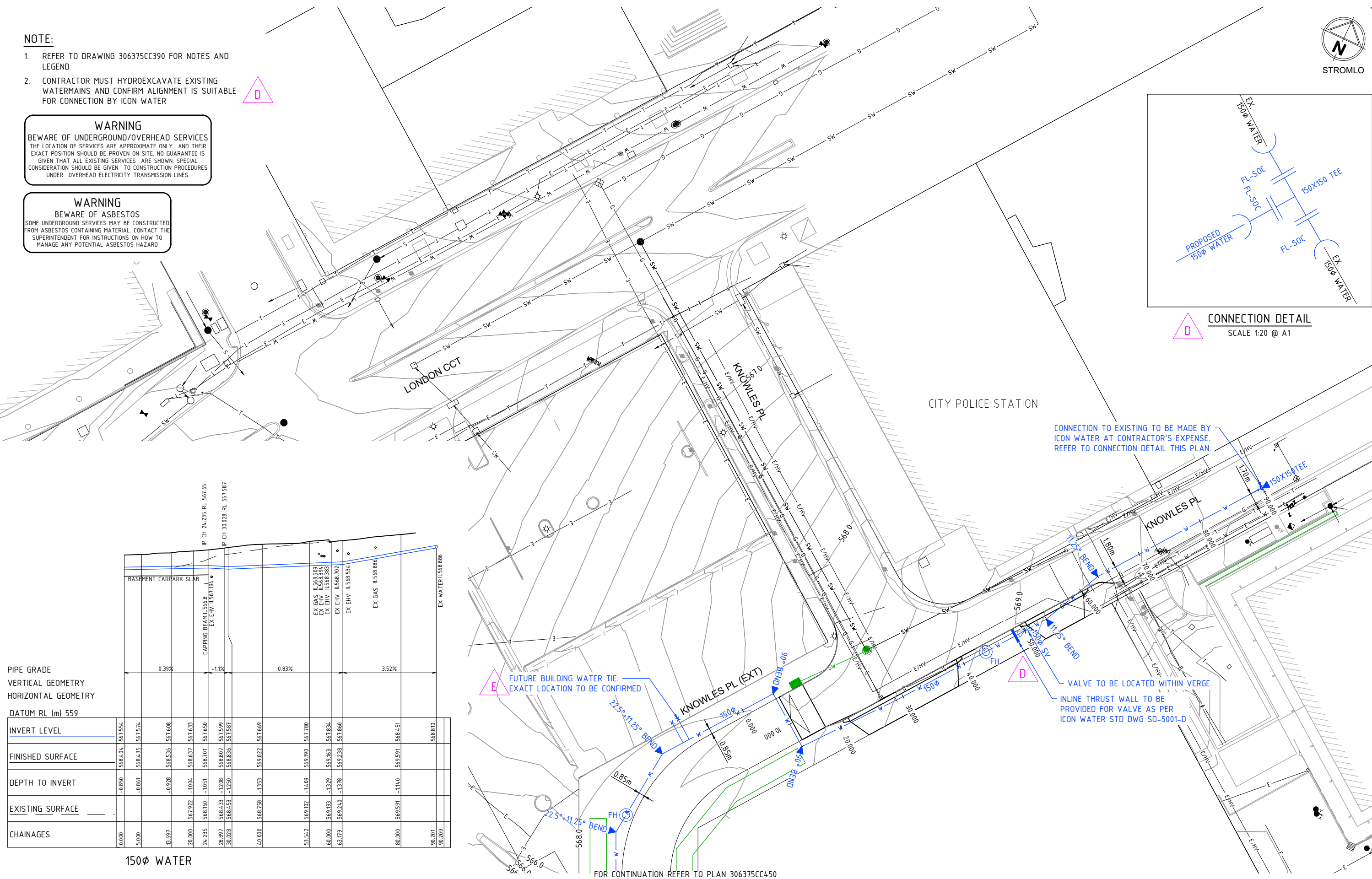
- NOTE:
1. REFER TO DRAWING 306375CC390 FOR NOTES AND LEGEND
 2. CONTRACTOR MUST HYDROEXCAVATE EXISTING WATERMANS AND CONFIRM ALIGNMENT IS SUITABLE FOR CONNECTION BY ICON WATER

WARNING
BEWARE OF UNDERGROUND/OVERHEAD SERVICES
THE LOCATION OF SERVICES ARE APPROXIMATE ONLY AND THEIR EXACT POSITION SHOULD BE PROVEN ON SITE. NO GUARANTEE IS GIVEN THAT ALL EXISTING SERVICES ARE SHOWN. SPECIAL CONSIDERATION SHOULD BE GIVEN TO CONSTRUCTION PROCEDURES UNDER OVERHEAD ELECTRICITY TRANSMISSION LINES.

WARNING
BEWARE OF ASBESTOS
SOME UNDERGROUND SERVICES MAY BE CONSTRUCTED FROM ASBESTOS CONTAINING MATERIAL. CONTACT THE SUPERINTENDENT FOR INSTRUCTIONS ON HOW TO MANAGE ANY POTENTIAL ASBESTOS HAZARD



CONNECTION DETAIL
SCALE 1:20 @ A1



PIPE GRADE
VERTICAL GEOMETRY
HORIZONTAL GEOMETRY

DATUM RL (m) 559	
INVERT LEVEL	561.554
FINISHED SURFACE	568.404
DEPTH TO INVERT	-0.850
EXISTING SURFACE	568.404
CHAINAGES	0.000

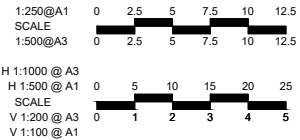
0.000	5.000	13.697	20.000	24.235	28.897	30.028	40.000	53.542	60.000	65.179	80.000	90.201	90.209
568.404	568.435	568.536	568.637	568.701	568.807	568.836	569.022	569.102	569.163	569.238	569.591	569.591	568.810
-0.850	-0.861	-0.928	-1.004	-1.051	-1.208	-1.250	-1.353	-1.409	-1.329	-1.378	-1.140	-1.140	
568.404	568.435	568.536	568.637	568.701	568.807	568.836	569.022	569.102	569.163	569.238	569.591	569.591	568.810
0.000	5.000	13.697	20.000	24.235	28.897	30.028	40.000	53.542	60.000	65.179	80.000	90.201	90.209

150Ø WATER

FOR CONTINUATION REFER TO PLAN 306375CC450

file name 306375CC450.dwg, layout name CC451, plotted by Carl Otto, file location \\spire.com.au\data\306375CC450.dwg, plot date 02/07/2021 13:17 PM Sheet 32 of 43 Sheets

Rev	Amendments	Approved	Date
E	BUILDING REVISION - PARKING ADJUSTED, TIES RELOCATED	LB	02-07-21
D	REISSUE - AMENDMENTS TO SUIT NEIGHBOURING BUILDING	LB	18-06-21
C	BUILDING REVISIONS - FITTINGS REVISED FOR DRIVEWAY CHANGES, TIES ADDED	LB	07-05-21
B	ICON WATER COMMENTS ADDRESSED - WATER LONG-SECTION ADDED	MB	09-02-21
A	ISSUED FOR APPROVAL	MB	01-12-20



spiire
Suite 5, 243 Northbourne Ave Lyneham 2602
Australian Capital Territory T 61 6102 1000
spiire.com.au ABN 55 050 029 635

morris
property group
Designed CO
Authorised MB
Checked LB
Date 01-12-20

**SECTION 100 CANBERRA CITY
STAGE 2 (KNOWLES PL EXTENSION)
SEWER AND WATER PLAN**
TCCS
MPG CONSTRUCTIONS
Drg No 306375CC451
Rev E

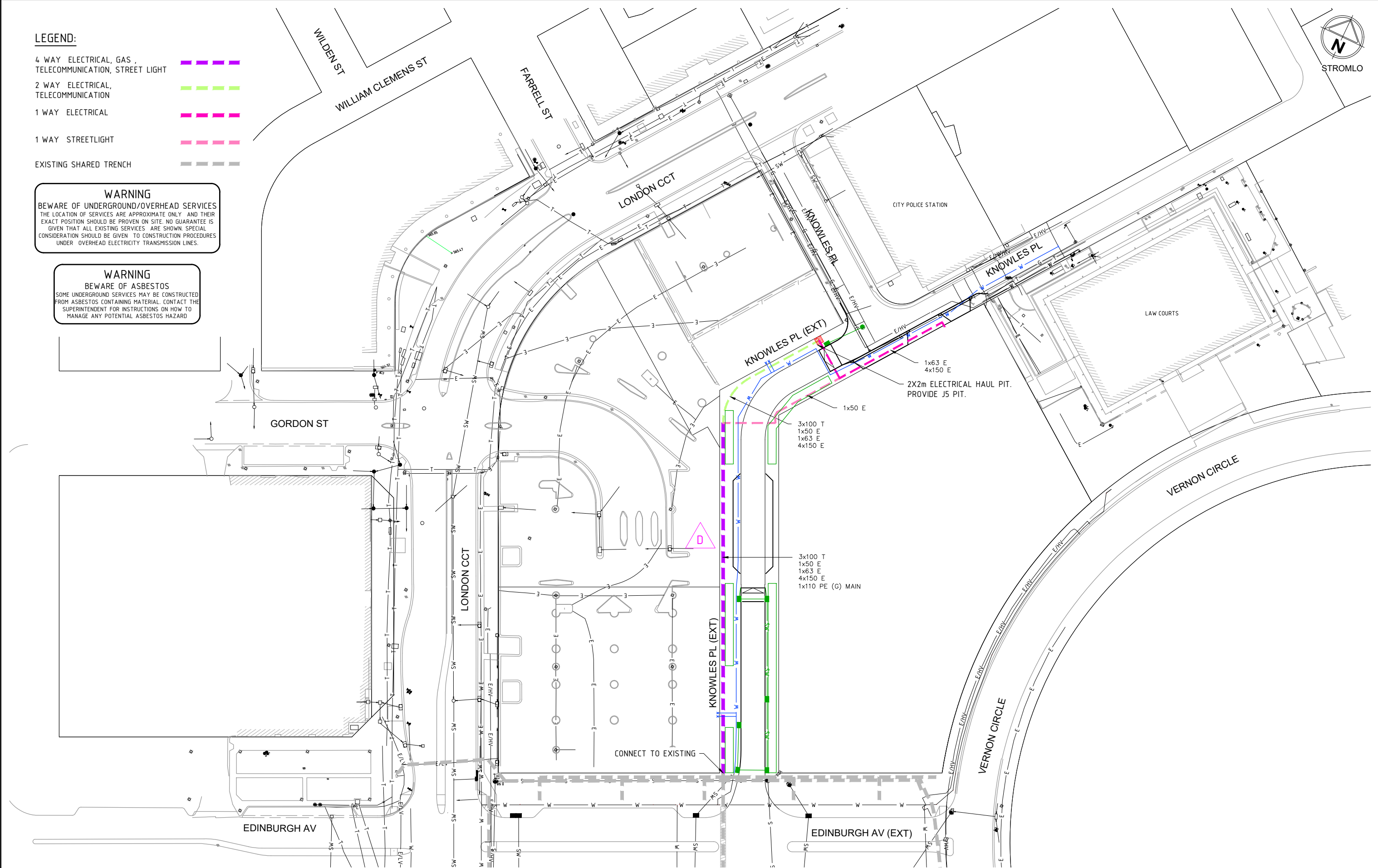
file name: 306375CC500.dwg, layout name: CC500, plotted by: Carl O'Ho,
file location: \\spiire.com.au\canberra\data\306375CC500.dwg, plot date: 02/07/2021 13:17 PM, Sheet: 33 of 43 Sheets

LEGEND:

- 4 WAY ELECTRICAL, GAS, TELECOMMUNICATION, STREET LIGHT
2 WAY ELECTRICAL, TELECOMMUNICATION
1 WAY ELECTRICAL
1 WAY STREETLIGHT
EXISTING SHARED TRENCH

WARNING
BEWARE OF UNDERGROUND/OVERHEAD SERVICES
THE LOCATION OF SERVICES ARE APPROXIMATE ONLY AND THEIR EXACT POSITION SHOULD BE PROVEN ON SITE. NO GUARANTEE IS GIVEN THAT ALL EXISTING SERVICES ARE SHOWN. SPECIAL CONSIDERATION SHOULD BE GIVEN TO CONSTRUCTION PROCEDURES UNDER OVERHEAD ELECTRICITY TRANSMISSION LINES.

WARNING
BEWARE OF ASBESTOS
SOME UNDERGROUND SERVICES MAY BE CONSTRUCTED FROM ASBESTOS CONTAINING MATERIAL. CONTACT THE SUPERINTENDENT FOR INSTRUCTIONS ON HOW TO MANAGE ANY POTENTIAL ASBESTOS HAZARD



Rev	Amendments	Approved	Date
D	BUILDING REVISION - PARKING ADJUSTED	LB	02-07-21
C	REISSUE - AMENDMENTS TO SUIT NEIGHBOURING BUILDING	LB	18-06-21
B	BUILDING REVISIONS - DRIVEWAYS REMOVED, DRIVEWAYS ENLARGED		
A	ISSUED FOR APPROVAL	MB	01-12-20

1:1000@A1
SCALE
1:2000@A3



© Spiire Australia Pty Ltd All Rights Reserved
This document is produced by Spiire Australia Pty Ltd solely for the benefit of and use by the client in accordance with the terms of the retainer. Spiire Australia Pty Ltd does not and shall not assume any responsibility or liability whatsoever to any third party arising out of any use or reliance by third party on the content of this document.

spiire

Suite 5, 243 Northbourne Ave Lyneham 2602
Australian Capital Territory T 61 6102 1000
spiire.com.au ABN 55 050 029 635

morris
property group

Designed
CO
Authorised
MB

Checked
LB
Date
01-12-20

SECTION 100 CANBERRA CITY
STAGE 2 (KNOWLES PL EXTENSION)
TRENCH MANGEMENT PLAN

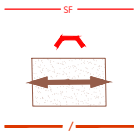
TCCS
MPG CONSTRUCTIONS

Drg No
306375CC500

Rev
D

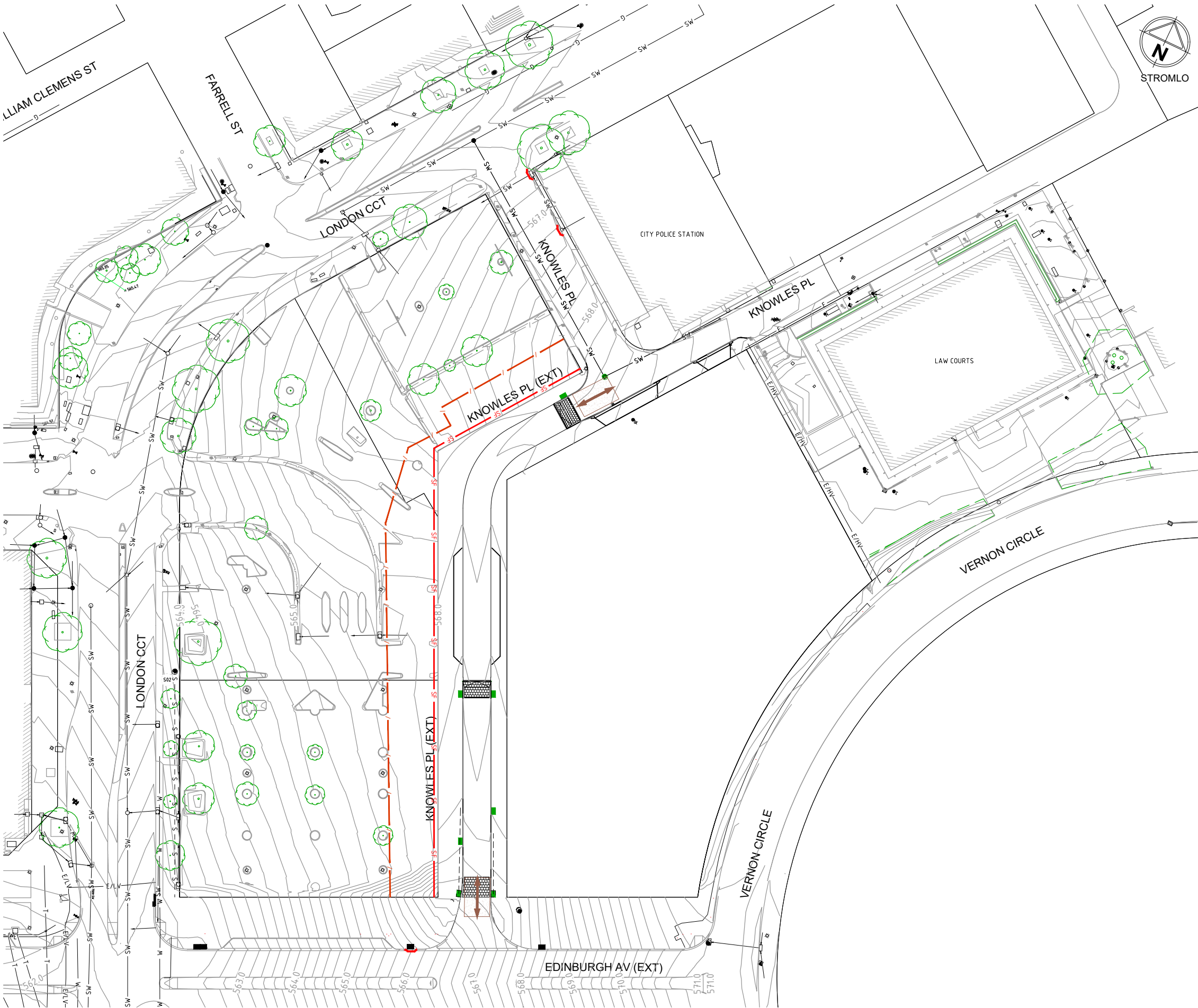
LEGEND:

- SILT FENCE
SUMP PROTECTION
STABILISED
ENTRANCE
TEMPORARY PERIMETER SECURITY FENCE



GENERAL NOTES

- REFER TO CLAUSES 2.03 OF THE STANDARD SPECIFICATION FOR URBAN INFRASTRUCTURE WORKS.
- THIS DRAWING TYPIFIES ONLY THE SEDIMENT AND EROSION CONTROL PRINCIPALS REQUIRED. IT IS THE RESPONSIBILITY OF THE CONTRACTOR TO DESIGN, CONSTRUCT AND MAINTAIN TEMPORARY EROSION CONTROL MEASURES TO COMPLY WITH THE REQUIREMENTS OF THE ENVIRONMENT PROTECTION AUTHORITY ACT 1997 AND THE "ENVIRONMENT PROTECTION GUIDELINES FOR CONSTRUCTION AND LAND DEVELOPMENT IN THE ACT". EPA 2011.
- VARIATIONS TO BE APPROVED CONCEPTS AND PROPOSALS ARE TO BE ENDORSED BY ENVIRONMENTAL PROTECTION AUTHORITY PRIOR TO IMPLEMENTATION.
- THE CONTRACTOR MUST ENTER INTO AN ENVIRONMENTAL PROTECTION AGREEMENT WITH THE ENVIRONMENT PROTECTION AUTHORITY BY CONTACTING ENVIRONMENT ACT ON 132281 PRIOR TO COMMENCEMENT OF WORK.
- UPON THE COMPLETION OF ROAD SEALING SUBJECT TO THE APPROVAL OF THE SUPERINTENDENT, THE ASSOCIATED GENERAL INLET PROTECTION SHALL BE REMOVED.
- STOCKPILES TO BE LOCATED AWAY FROM DRAINAGE LINES AND SURFACE FLOW PATHS. CONTOURED STRIATIONS OR FURROWS TO BE PROVIDED TO STOCKPILES TO MINIMISE EROSION.
- UNLESS OTHERWISE NOTED ELSEWHERE STABILISED CONSTRUCTION ENTRANCE TO BE CONSTRUCTED PRIOR TO ACCESS TO SITE BY CONSTRUCTION VEHICLES, AGGREGATE TO BE TURNED WHEN SEDIMENT BUILDS UP.
- WHERE STORMWATER DRAINAGE IS INSTALLED TO INTERNAL ROADWORKS, PROVIDE KERBSIDE FILTER ROLL TO SUMP INLET.
- CONTRACTOR IS TO ESTABLISH A MAINTENANCE PROGRAM FOR SEDIMENT AND EROSION CONTROL DEVICES TO ENSURE INSPECTION AFTER SIGNIFICANT RAINFALL AND THAT ANY REPAIRS NECESSARY ARE QUICKLY ATTENDED TO. ALL NEW CONSTRUCTION WORK MUST BE CONTAINED WITHIN THE SITE EXCEPT FOR APPROVED SERVICE CONNECTIONS AND ROADWORKS.
- REGULARLY REMOVE ANY SOIL FROM ROADS ADJACENT TO THE SITE.
- NO STORAGE OF CONSTRUCTION MATERIALS, PARKING OF VEHICLES NOR EQUIPMENT PERMITTED OUTSIDE OF BLOCKS WITHOUT TCCS APPROVAL.
- NO SITE SHEDS, STORAGE SHEDS, SITE AMENITIES TO BE ERECTED OUTSIDE OF BLOCKS WITHOUT TCCS APPROVAL.
- PROVIDE KERBSIDE FILTER ROLL TO EXISTING SUMPS. KERBSIDE FILTER ROLLS TO BE REMOVED, CLEANED AND REINSTATED ON WEEKLY BASIS AT MINIMUM TRAPPED SEDIMENT AROUND SUMPS ALSO TO BE REMOVED. CLEANING TO BE TAKEN OUT IMMEDIATELY AFTER PERIODS OF RAINFALL DURING CONSTRUCTION.
- ALL BUILDING MATERIAL AND WASTE STOCKPILES SHALL BE LOCATED WITHIN A WASTE ENCLOSURE OR WASTE CONTAINMENT AREA ON THE SITE.
- A WATER CART OR SUFFICIENT WATER SPRAYS SHALL BE MADE AVAILABLE IN DRY AND WINDY CONDITIONS TO MAINTAIN DUST SUPPRESSION.
- WATER SHALL BE APPLIED TO SUPPRESS DUST FROM OPEN EARTHWORKS AS WELL AS UNPROTECTED STOCKPILES.
- ALL BUILDING MATERIAL AND WASTE STOCKPILES MUST BE LOCATED ON THE SITE.
- THE WASTE ENCLOSURE IS TO BE USED AND IS TO BE CAPABLE OF HOLDING ALL WASTES ON THE SITE UNTIL THEY CAN BE DISPOSED OF IN AN APPROPRIATE MANNER.
- ANY NOISE ACTIVITIES, WHICH INCLUDE MATERIAL DELIVERIES AND WORK SITE PREPARATION IS ONLY PERMITTED BETWEEN THE FOLLOWING HOURS:
7.00AM AND 6.00 PM MONDAY TO SATURDAY (EXCLUDING PUBLIC HOLIDAYS),
AT ALL OTHER TIMES NOISE EMISSION MUST NOT EXCEED THE ZONE NOISE STANDARD.
- IF SOIL IS TO BE REMOVED OR IMPORTED ON SITE, THE DETAILS OF THE ORIGIN OF THE SOIL IMPORTED OR THE LOCATION WHERE THE SOIL IS TO BE EXPORTED ARE TO BE PROVIDED TO EPA A MINIMUM OF 2 WEEKS IN ADVANCE OF THE WORK.



1:500@ A1
SCALE
1:1000@ A3



© Spiire Australia Pty Ltd All Rights Reserved
This document is produced by Spiire Australia Pty Ltd solely for the benefit of and use by the client in accordance with the terms of the retainer. Spiire Australia Pty Ltd does not and shall not assume any responsibility or liability whatsoever to any third party arising out of any use or reliance by third party on the content of this document.

spiire

Suite 5, 243 Northbourne Ave Lyneham 2602
Australian Capital Territory T 61 6102 1000
spiire.com.au ABN 55 050 029 635

**morris
property group**

Designed
CO
Authorised
MB

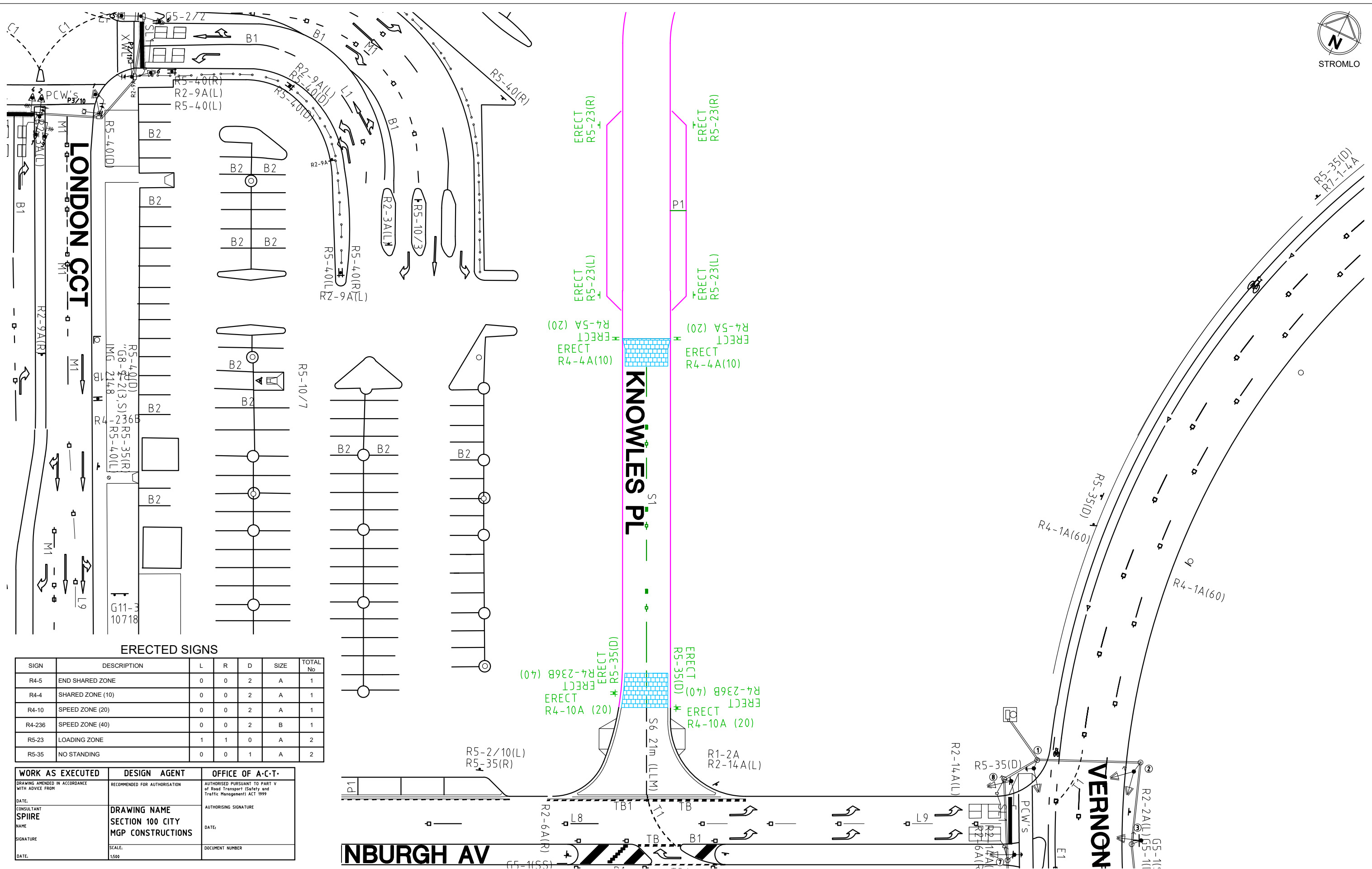
Checked
LB
Date
01-12-20

**SECTION 100 CANBERRA CITY
STAGE 2 (KNOWLES PL EXTENSION)
ENVIRONMENTAL MANAGEMENT CONCEPT PLAN**

TCCS
MPG CONSTRUCTIONS

Drg No
306375CC520

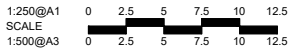
Rev
C



SIGN	DESCRIPTION	L	R	D	SIZE	TOTAL No
R4-5	END SHARED ZONE	0	0	2	A	1
R4-4	SHARED ZONE (10)	0	0	2	A	1
R4-10	SPEED ZONE (20)	0	0	2	A	1
R4-236	SPEED ZONE (40)	0	0	2	B	1
R5-23	LOADING ZONE	1	1	0	A	2
R5-35	NO STANDING	0	0	1	A	2

WORK AS EXECUTED	DESIGN AGENT	OFFICE OF A.C.T.
DRAWING AMENDED IN ACCORDANCE WITH ADVICE FROM	RECOMMENDED FOR AUTHORISATION	AUTHORISED PURSUANT TO PART V of Road Transport (Safety and Traffic Management) ACT 1999
DATE:		
CONSULTANT SPIRE	DRAWING NAME	AUTHORISING SIGNATURE
NAME	SECTION 100 CITY	DATE:
SIGNATURE	MGP CONSTRUCTIONS	
DATE:	SCALE:	DOCUMENT NUMBER
	1:500	

E	BUILDING REVISION - PARKING ADJUSTED	LB	02-07-21
D	REISSUE - AMENDMENTS TO SUIT NEIGHBOURING BUILDING	LB	18-06-21
C	BUILDING REVISIONS - DRIVEWAYS REMOVED, SHARE ZONE LENGTHENED	LB	07-05-21
B	TCCS COMMENTS ADDRESSED	MB	05-02-21
A	ISSUED FOR APPROVAL	MB	01-12-20
Rev	Amendments	Approved	Date



© Spiire Australia Pty Ltd All Rights Reserved
This document is produced by Spiire Australia Pty Ltd solely for the benefit of and use by the client in accordance with the terms of the retainer. Spiire Australia Pty Ltd does not and shall not assume any responsibility or liability whatsoever to any third party arising out of any use or reliance by third party on the content of this document.



Suite 5, 243 Northbourne Ave Lyneham 2602
Australian Capital Territory T 61 6102 1000
spiire.com.au ABN 55 050 029 635



Designed	Checked
CO	LB
Authorised	Date
MB	01-12-20

**SECTION 100 CANBERRA CITY
STAGE 2 (KNOWLES PL EXTENSION)
TRAFFIC CONTROL DEVICES PLAN**

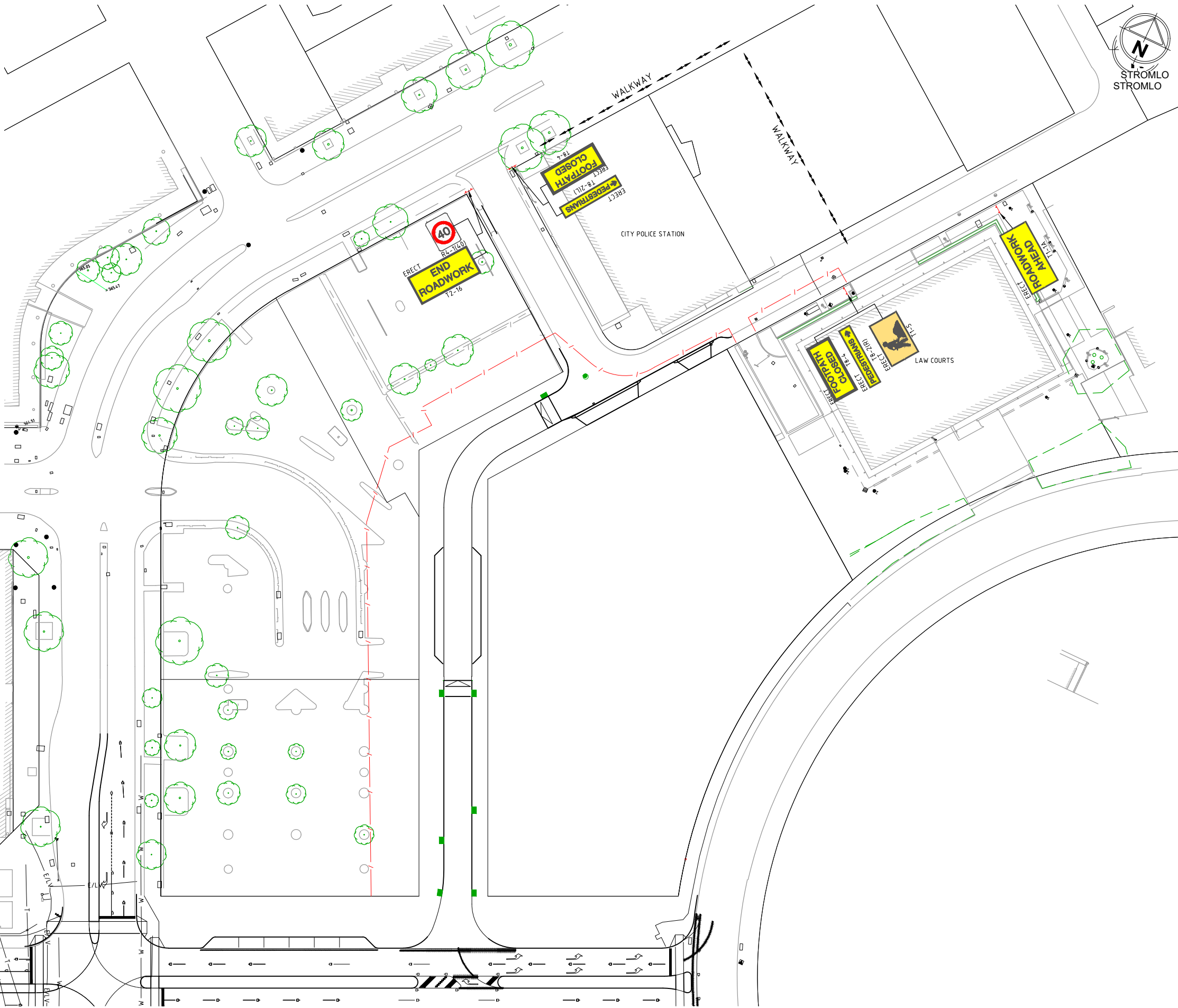
TCCS
MPG CONSTRUCTIONS

Drg No	Rev
306375CC600	E

file name 306375CC600.dwg layout name CC600 plotted by Carl Otto
file location \\spire.com.au\\candata\\data\\30\\305632\\Civ\\\\ACAD\\ST2 XP plot date 02/07/2021 1:38 PM Sheet 36 of 43 Sheets

NOTES

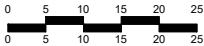
1. ALL TEMPORARY TRAFFIC MANAGEMENT DEVICES ARE TO BE IN ACCORDANCE WITH AS 1742.3-2009.
2. ALL EXISTING SPEED RESTRICTION SIGNAGE WITHIN THE WORKSITE MUST BE COVERED WHEN THE TEMPORARY ROADWORK SPEED RESTRICTION ARE IN OPERATION.
3. ALL WORKERS SHALL WEAR HIGH VISIBILITY EXTERNAL CLOTHING IN ACCORDANCE WITH AS 1742.3.
4. ALL SIGNS AND DEVICES SHALL BE ERECTED WITHIN THE LINE OF SIGHT OF THE ROAD USER. THEY SHALL NOT BE OBSCURED BY VEGETATION OR PARKED VEHICLES AND SHALL BE POSITIONED WHERE THEY DO NOT BECOME A HAZARD TO PEDESTRIANS OR VEHICLES.
5. THE CONTRACTOR SHALL ASSESS ALL EXCAVATIONS WITHIN 4.5m OF A TRAFFICABLE LANE AND PROVIDE PROTECTION AND DELINEATION IN ACCORDANCE WITH AS 1742.3-2009.
6. WHERE EXISTING OR NEW TTM SIGNAGE (BY OTHERS) CONFLICTS WITH THE PROPOSED TTM DEVICES, THE CONTRACTOR SHALL LIAISE WITH ROADS ACT AND ADJUST THE TTM SIGNAGE AS REQUIRED TO ENSURE THE TTM DESIGN INTENT IS MET AND REMOVE THE CONFLICT.
7. OUT OF WORKING HOURS, PARAWEB OR APPROVED EQUAL CONTAINMENT FENCES SHALL BE ERECTED AROUND THE PERIMETER OF ALL EXCAVATIONS AND STOCKPILES.
8. ALL T1-5 (WORKMAN), R4-1(40) (SPEED RESTRICTION), AND T2-6-2 (LANE STATUS) SIGNS SHALL BE COVERED AND BOLLARDS MOVED ADJACENT TO THE EXISTING KERB AND ERECT T5-5 (CHEVRON) SIGN ON THE WORK APPROACH WHEN WORKERS ARE NOT ON SITE OR OUT OF WORKING HOURS.
9. A MINIMUM CLEAR LANE WIDTH OF 3.0m MINIMUM SHALL BE MAINTAINED AT ALL TIMES.
10. KNOWLES PLACE MUST REMAIN ONE WAY UNTIL OPERATIONAL ACCEPTANCE IS ACHIEVED FOR KNOWLES PLACE EXTENSION.



file name 306375CC615.dwg layout name CC615 plotted by Carl DHO
file location \\spire.com.au\candara\data\306375\306375.dwg plot date 02/07/2021 1:38 PM Sheet 42 of 43 Sheets

C	BUILDING REVISION - PARKING ADJUSTED	LB	02-07-21	
B	REISSUE - AMENDMENTS TO SUIT NEIGHBOURING BUILDING	LB	18-06-21	
A	ISSUED FOR APPROVAL	MB	01-12-20	
Rev	Amendments	Approved	Date	

1:500@ A1
SCALE
1:1000@ A3



© Spiire Australia Pty Ltd All Rights Reserved
This document is produced by Spiire Australia Pty Ltd solely for the benefit of and use by the client in accordance with the terms of the retainer. Spiire Australia Pty Ltd does not and shall not assume any responsibility or liability whatsoever to any third party arising out of any use or reliance by third party on the content of this document.



Suite 5, 243 Northbourne Ave Lyneham 2602
Australian Capital Territory T 61 6102 1000
spiire.com.au ABN 55 050 029 635



Designed	CO	Checked	LB
Authorised	MB	Date	01-12-20

SECTION 100 CANBERRA CITY
STAGE 2 (KNOWLES PL EXTENSION)
CONCEPT TRAFFIC MANAGEMENT PLAN

TCCS
MPG CONSTRUCTIONS

Drg No
306375CC615
Rev
C