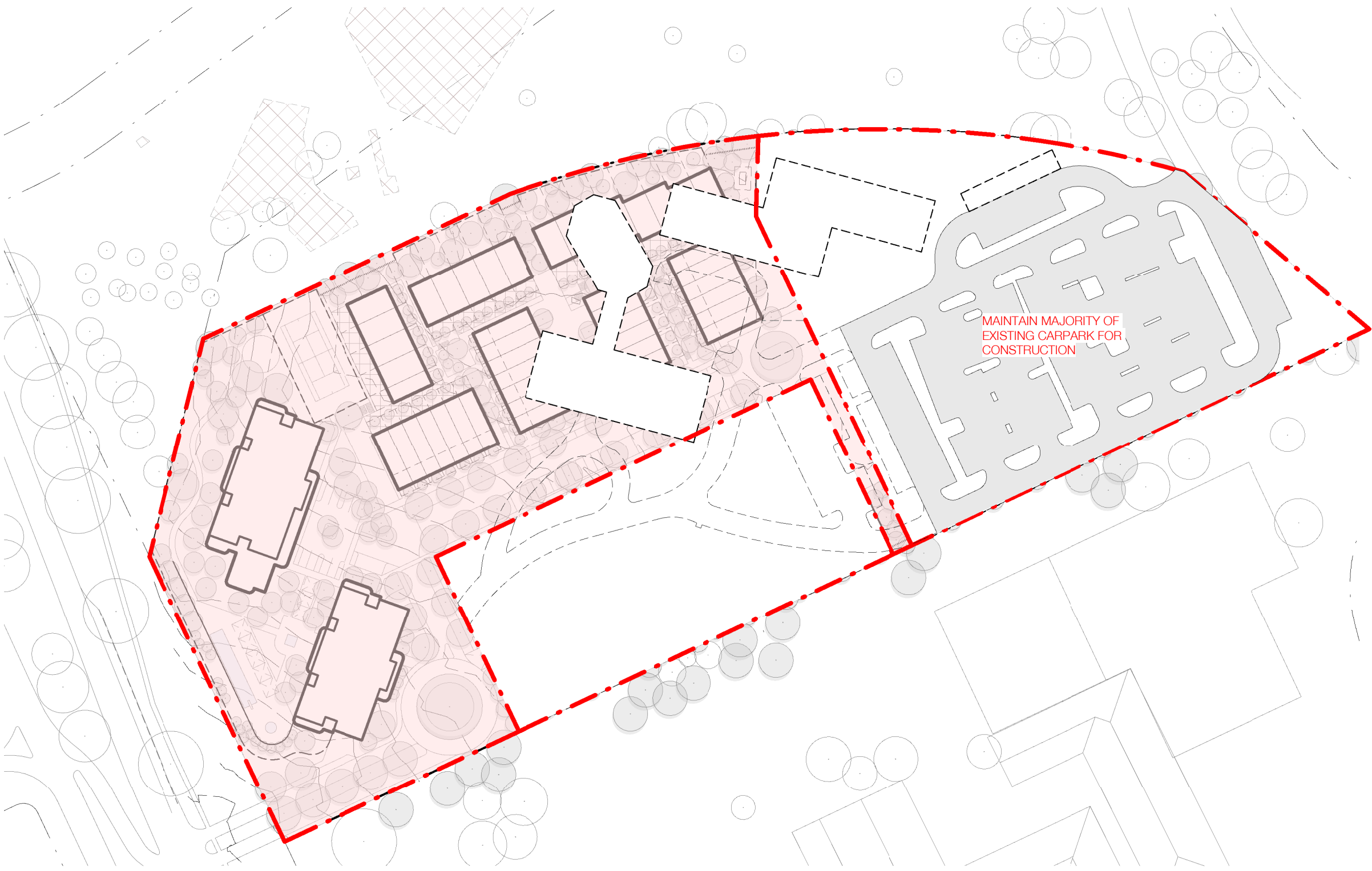


BLOCKS 4 & 5 SECTION 38 CAMPBELL  
DEVELOPMENT STAGING

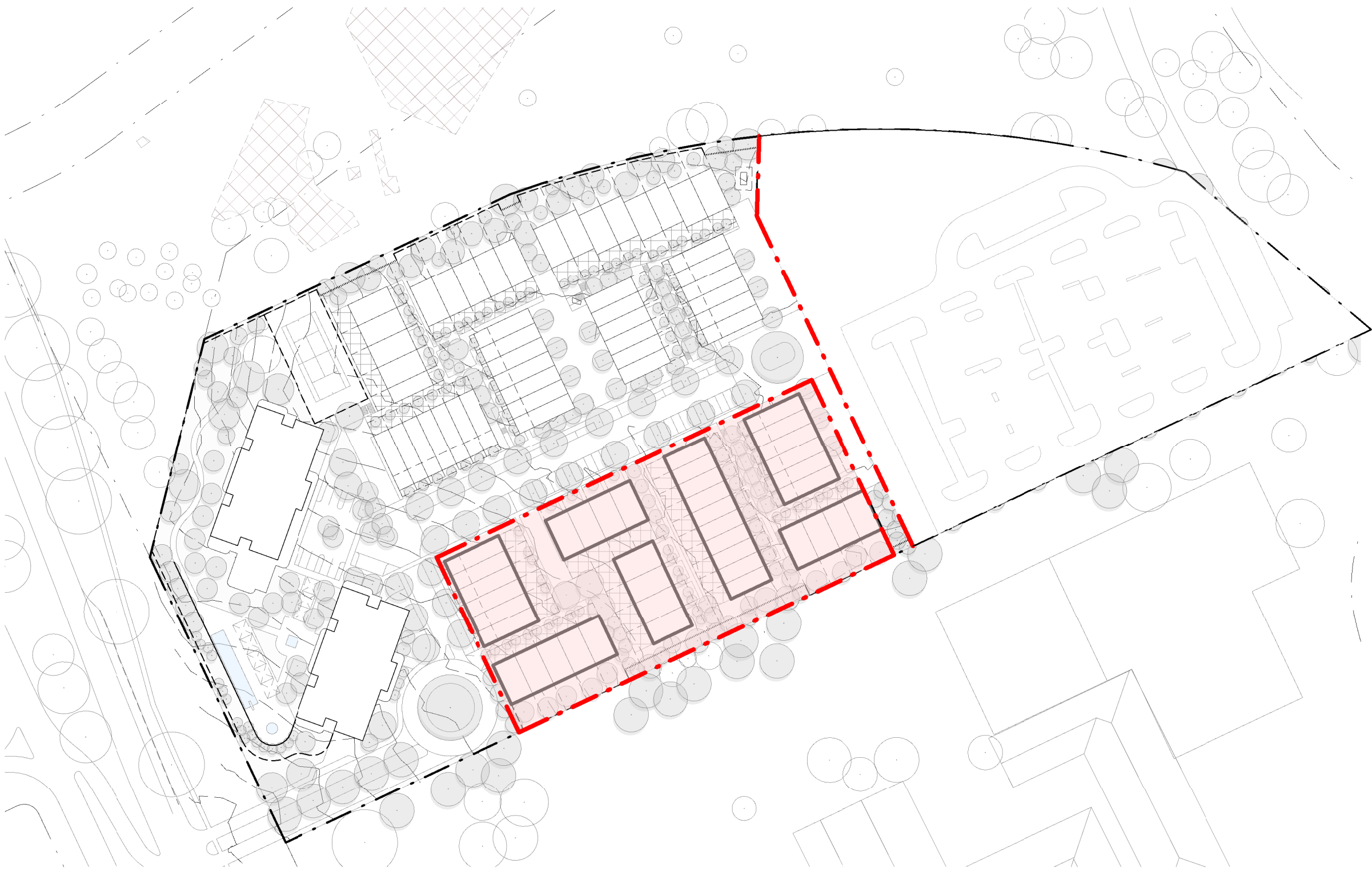
The design concept allows for staged development whilst minimizing impact on residents and the wider community.

The first stage of the development along Limestone Avenue provides the entry building to the precinct including all internal communal facilities. It is likely that the existing hardstand parking will be retained during construction of Stage 1 to provide parking for construction workers.

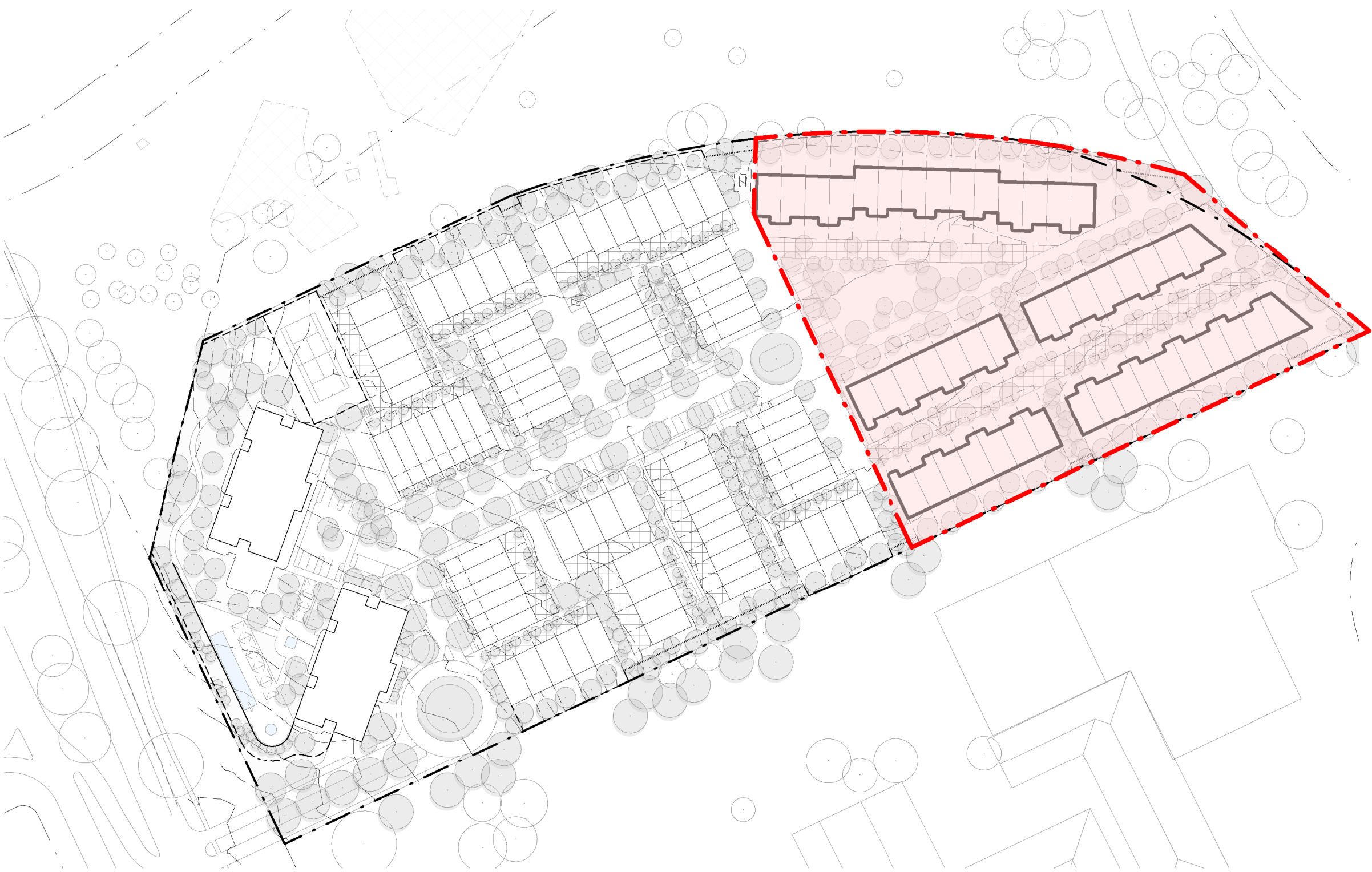
The townhouses will be constructed in ongoing stages of development to provide an immediate mix of dwelling types within the precinct and with consideration of minimising the impact of construction vehicles within completed residential stages.



**STAGE 1**  
NOTE: PRIOR TO STAGE 1 EXISTING BUILDINGS ON SITE ARE TO BE DEMOLISHED



**STAGE 2**



**STAGE 3**

