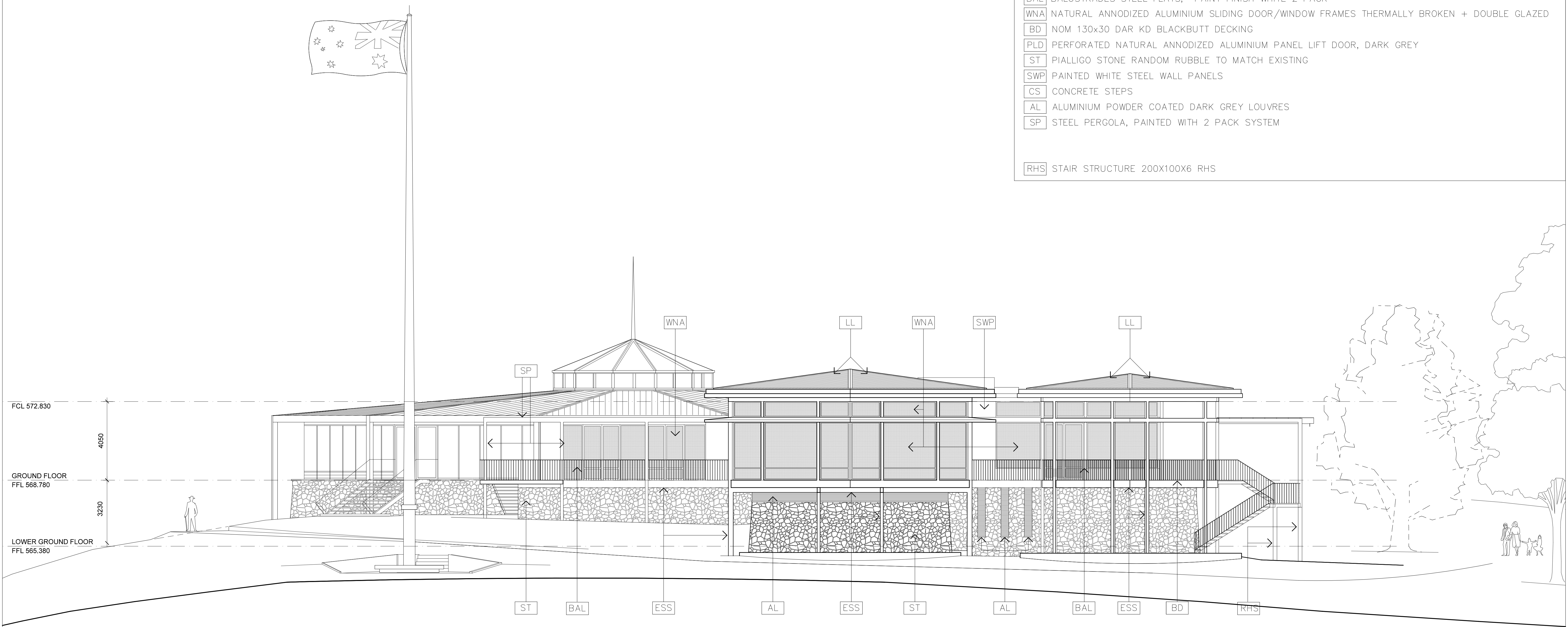


MATERIALS LEGEND

- LL LYSAGHT 'LONGLINE 305' COLORBOND SURFMIST
- ESS EXTERNAL STRUCTURAL STEEL, PAINTED WITH 2 PACK SYSTEM
- BAL BALUSTRADES STEEL FLATS, PAINT FINISH WHITE 2 PACK
- WNA NATURAL ANNODIZED ALUMINIUM SLIDING DOOR/WINDOW FRAMES THERMALLY BROKEN + DOUBLE GLAZED
- BD NOM 130x30 DAR KD BLACKBUTT DECKING
- PLD PERFORATED NATURAL ANNODIZED ALUMINIUM PANEL LIFT DOOR, DARK GREY
- ST PIALIGO STONE RANDOM RUBBLE TO MATCH EXISTING
- SWP PAINTED WHITE STEEL WALL PANELS
- CS CONCRETE STEPS
- AL ALUMINIUM POWDER COATED DARK GREY LOUVRES
- SP STEEL PERGOLA, PAINTED WITH 2 PACK SYSTEM

RHS STAIR STRUCTURE 200X100X6 RHS



ISSUE:		DATE:	CONSULTANTS:		ARCHITECT:		PROJECT:		NORTH POINT		DRAWING TITLE:					DRAWING NO.	
A	ISSUED FOR WORKS APPROVAL	21.01.20			<b>T+AA</b> Townsend + Associates Architects <div>E info@t-a.com.au P (02) 6257 7033</div>		<b>REGATTA POINT ALTERATIONS + ADDITIONS</b>				<b>EAST ELEVATION</b>					<b>A201</b>	
											STAGE: <b>WORKS APPROVAL</b>						
					SCALE BAR: <div><div></div><div>01234510</div><div>METRES</div></div>				CLIENT:  <b>Australian Government National Capital Authority</b>		DRAWN: BT, AE		CHECKED: -	VERIFIED: -	DATE: JAN 2020	SCALE: 1:200 @ A3 1:100 @ A1	JOB NO. 1903