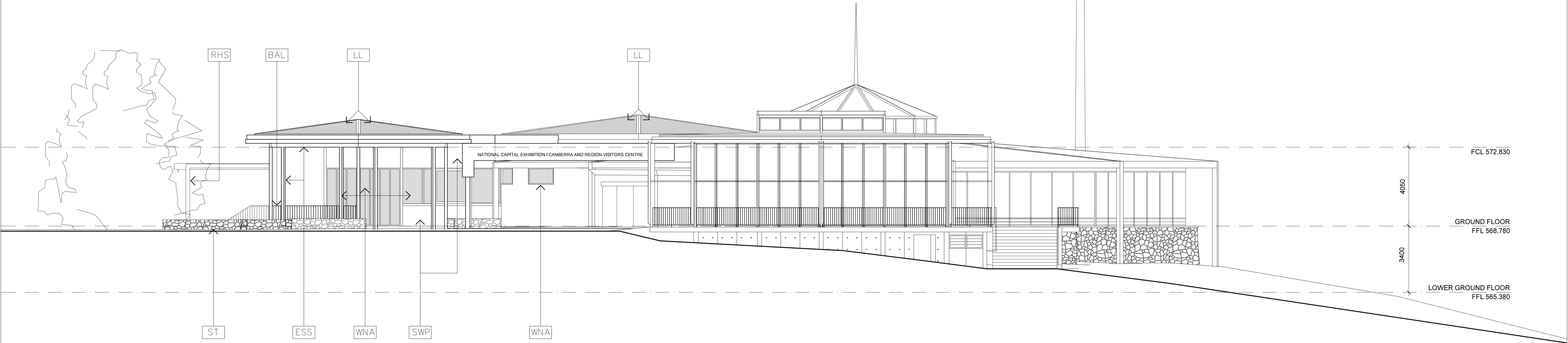


MATERIALS LEGEND

|     |   |
|-----|---|
| LL  | LYSAGHT 'LONGLINE 305' COLORBOND SURFMIST   |
| ESS | EXTERNAL STRUCTURAL STEEL, PAINTED WITH 2 PACK SYSTEM                                   |
| BAL | BALUSTRADES STEEL FLATS, PAINT FINISH WHITE 2 PACK                                      |
| WNA | NATURAL ANNODIZED ALUMINIUM SLIDING DOOR/WINDOW FRAMES THERMALLY BROKEN + DOUBLE GLAZED |
| BD  | NOM 130X30 BAR KD BLACKBUTT DECKING   |
| PLD | PERFORATED NATURAL ANNODIZED ALUMINIUM PANEL LIFT DOOR, DARK GREY                       |
| ST  | PIALLCO STONE RANDOM RUBBLE TO MATCH EXISTING   |
| SWP | PAINTED WHITE STEEL WALL PANELS   |
| CS  | CONCRETE STEPS  |
| AL  | ALUMINIUM POWDER COATED DARK GREY LOUVRES   |
| SP  | STEEL PERGOLA, PAINTED WITH 2 PACK SYSTEM   |
| RHS | STAIR STRUCTURE 200X100X6 RHS   |



|        |          |              |  |  |             |   |             |
|--------|----------|--------------|--|--|-------------|---|-------------|
| ISSUE: | DATE:    | CONSULTANTS: | ARCHITECT:   | PROJECT:   | NORTH POINT | DRAWING TITLE:  | DRAWING NO. |
| A      | 21.01.20 |              | <b>T+AA</b><br>Townsend + Associates Architects<br>E info@t-a.com.au<br>P (02) 6257 7033 | <b>REGATTA POINT<br/>ALTERATIONS + ADDITIONS</b> |             | <b>WEST ELEVATION</b>   | <b>A203</b> |
|        |          |              | SCALE BAR:<br>0 1 2 3 4 5 10 METRES  | CLIENT:<br>                                      |             | STAGE:<br><b>WORKS APPROVAL</b>   |             |
|        |          |              |  |  |             | DRAWN: BT, AE<br>CHECKED: -<br>VERIFIED: -<br>DATE: JAN 2020<br>SCALE: 1:200 @ A3<br>1:100 @ A1<br>JOB NO. 1903 | ISSUE: A    |