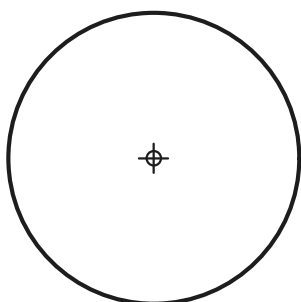
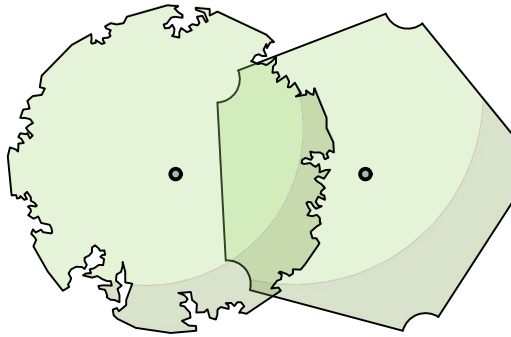
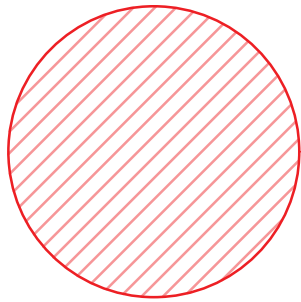




LEGEND

-  existing trees
-  proposed trees
-  tree canopy cover
-  deck
-  landscaping area = 571 m²

TREE CANOPY COVER :  
EXISTING + PROPOSED = 513m²  
= 29% OF 1789

AREA		
SECTIONS	SIZE	% OF TOTAL SITE AREA
EXISTING DWELLING	237m²	13%
PROPOSED STUDIO	43 m²	2%
PROPOSED CARPORT	39 m²	2%
BIKE STORAGE	7 m²	0%
DECKING	31 m²	2%
PAVING	188 m²	11%
DRIVEWAY	63m²	4%
GRAVEL TENNIS COURT	610m²	34%
LANDSCAPING	571m²	32%
TOTAL SITE AREA	1789 m²	100%

REV.	DESCRIPTION	DRAWN	APPROVED	DATE
A	FOR APPROVAL	HJ	KH	10JULY20
-	-	-	-	-
-	-	-	-	-
-	-	-	-	-
-	-	-	-	-
-	-	-	-	-
-	-	-	-	-
-	-	-	-	-
-	-	-	-	-
-	-	-	-	-

HARRIS HOBBS

LANDSCAPES

Landscape Architect

16 ROBE STREET  
DEAKIN ACT 2600  
p +61 2 6273 4661  
e hhl@hhl.com.au  
w www.hhl.com.au

012345678910m

STATUS FOR APPROVAL

SCALE @ A3  
1:200

DATE  
JULY 2020

CLIENT  
MARK TAYLOR & FRANCES WILD

PROJECT  
12 MELBOURNE AVE DEAKIN

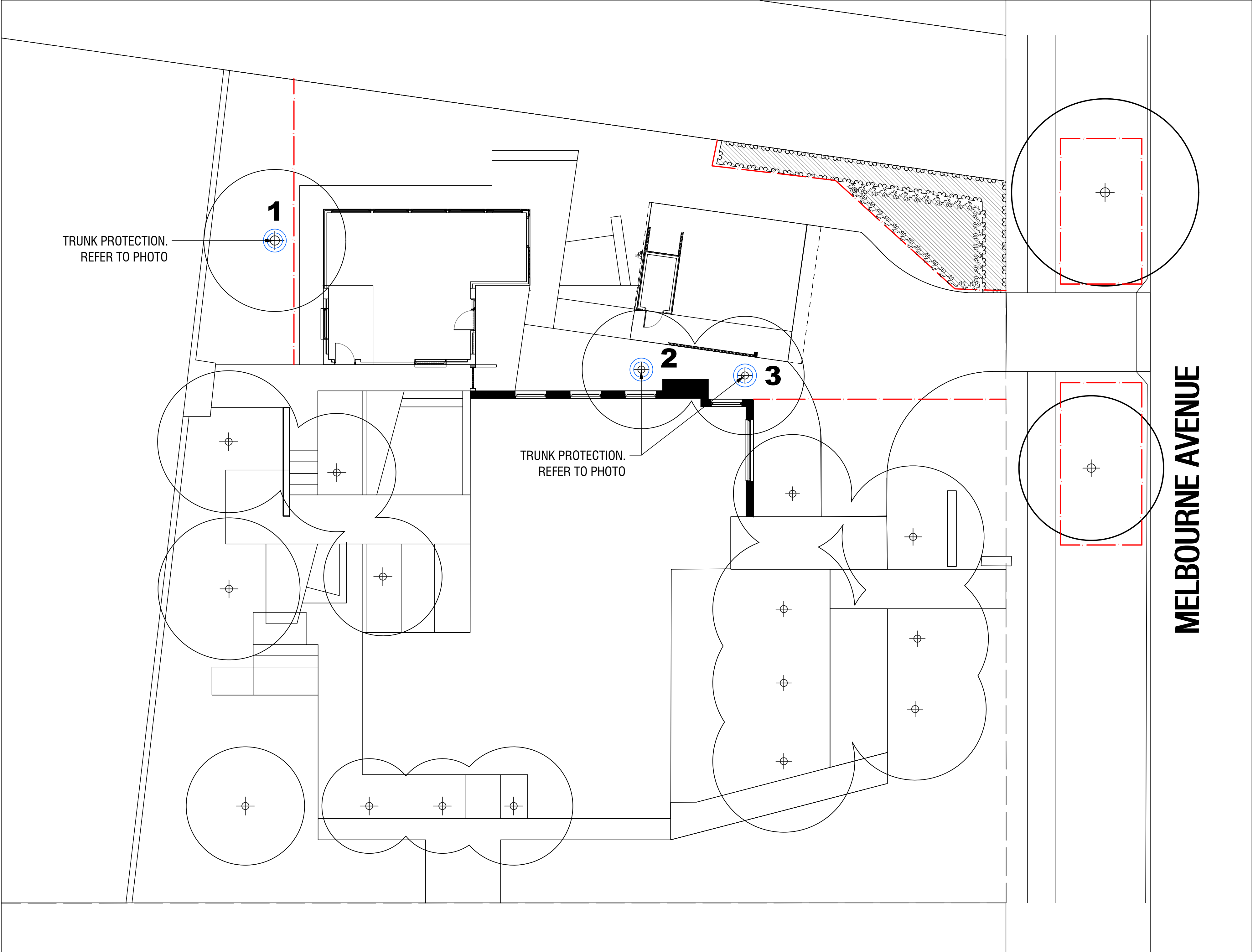
DRAWING TITLE  
LANDSCAPE AREAS & TREE CANOPY EXTENT

20099

REV A

DWG 201





TREE PROTECTION NOTES

- 1. THERE IS TO BE MINIMAL EXCAVATION WITHIN TREE PROTECTION ZONE OF THE TREES TO BE RETAINED, SO AS NOT TO DAMAGE TREE ROOTS.
- 2. ANY EXCAVATION WITHIN 4M OF TREES MUST BE CARRIED OUT WITH A NON INVASIVE METHOD SUCH AS HAND DIGGING OR HYDRO VAC USING LOW PRESSURE LESS THAN 2000PSI IN CONJUNCTION WITH A FAN SHAPED NOZZLE TO LOCATE ANY TREE ROOTS, THIS EXCAVATION MUST NOT REMOVE THE BARK OFF ANY SIGNIFICANT TREE ROOTS.
- 3. NO TREE ROOTS GREATER THAN 40MM ARE TO BE REMOVED WITHOUT CONSULTATION WITH THE SUPERINTENDENT.
- 4. IF TREE ROOTS LESS THAN 40MM ARE TO BE REMOVED, THEY MUST BE CUT CLEANLY WITH A SHARP INSTRUMENT AND NOT, PULLED, RIPPED OR TORN.

LANDSCAPE MANAGEMENT PROTECTION NOTES

PROVIDE FENCING AS SHOWN ON DRAWING. INSTALL 1800mm TALL CONTINUOUS CHAIN MESH FENCE SUPPORTED BY 2400mm TALL STAR STEEL POSTS OR TEMPORARY CHAIN MESH PANELS + GUIDE BLOCKS AROUND EXISTING TREES AS SHOWN ON DRAWING.

CONSTRUCTION ACCESS IS TO BE FROM THE EXISTING DRIVE CROSSING ON MELBOURNE AVENUE.

FENCING TO BE ERECTED ON COMMENCEMENT OF SITE WORK AND REMOVED AT COMPLETION OF CONSTRUCTION. THE FENCE IS TO REMAIN CONTINUOUS THROUGHOUT THE PROJECT.

MAINTAIN ACCESS FOR PEDESTRIANS ALONG EXISTING FOOTPATHS SURROUNDING SITE.

ALL WORK IS TO BE IN ACCORDANCE WITH THE STANDARD SPECIFICATION FOR URBAN INFRASTRUCTURE, 2002

MAKE GOOD ANY DAMAGE TO ADJACENT WORKS AND REINSTATE AS PER THE STANDARD SPECIFICATION.

IT IS THE RESPONSIBILITY OF THE BUILDER TO ENSURE THAT ANY DISTURBANCES TO THE EXISTING GROUND COVER, TREES, PATHS, KERBS, ROADWAYS OR SERVICES OCCURING FROM EITHER CONSTRUCTION WORKS OR STORAGE OF MACHINERY/ MATERIALS DURING THE CONSTRUCTION WORKS ARE RECTIFIED TO THE SATISFACTION OF RELEVANT AUTHORITIES.

NO CARPARKING OR EQUIPMENT PARKING PERMITTED ON SITE EXCEPT IN CONSTRUCTION COMPOUND.

NO SITE SHEDS, STORAGE SHEDS, SITE AMENITIES OR BILLBOARDS TO BE ERECTED ON VERGES/PUBLIC LAND.

NO CONSTRUCTION MATERIAL TO BE STORED ON VERGES/PUBLIC LAND.

LEGEND

- existing trees
- existing vegetation retained
- tree trunk protection - refer to tree protection notes and photo
- temporary construction fencing



Tree Trunk Protection to Existing Trees

EXISTING PROTECTED TREES

- 1. Ginkgo biloba
- 2. Cornus florida ssp.
- 3. Cornus florida ssp.

REV.	DESCRIPTION	DRAWN	APPROVED	DATE
A	FOR APPROVAL	HJ	KH	13 JULY 20
-	-	-	-	-
-	-	-	-	-
-	-	-	-	-
-	-	-	-	-
-	-	-	-	-
-	-	-	-	-
-	-	-	-	-
-	-	-	-	-
-	-	-	-	-

HARRIS HOBBS

LANDSCAPES

Landscape Architect

16 ROBE STREET  
DEAKIN ACT 2600  
p +61 2 6273 4661  
e hhl@hhl.com.au  
w www.hhl.com.au

SCALE @ A3

1:200

DATE

JULY 2020

CLIENT

MARK TAYLOR & FRANCES WILD

PROJECT

12 MELBOURNE AVE DEAKIN

DRAWING TITLE

TREE PROTECTION PLAN

STATUS

FOR APPROVAL

JOB

20099

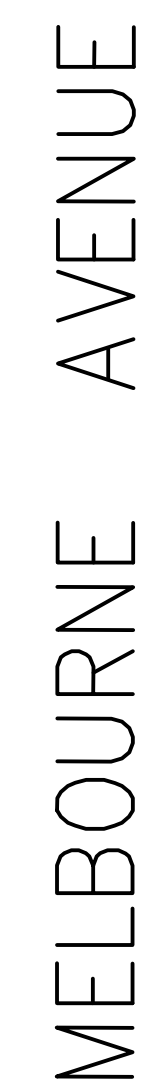
REV

A

DWG

202





existing trees retained

existing trees removed

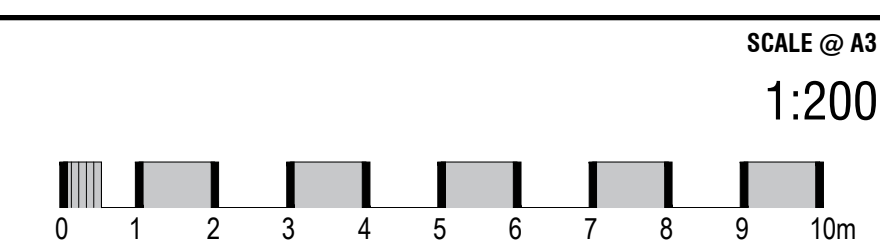


TREE NO.	SPECIES	HEIGHT (m)	WIDTH (m)	TRUNKS (no.)	TRUNK CIRC. (mm)	RATING	REGULATED	RECOMMENDATION	COMMENTS
1	<i>Ulmus parvifolia</i>	6	6	1	350	FAIR	NO	<b>REMOVE</b>	Tree failed to thrive since it was planted 8 years ago

**HARRIS HOBBS**  
LANDSCAPES

**Landscape Architect**

16 ROBE STREET  
DEAKIN ACT 2600  
p +61 2 6272 4661  
e [hhl@hhl.com.au](mailto:hhl@hhl.com.au)  
w [www.hhl.com.au](http://www.hhl.com.au)

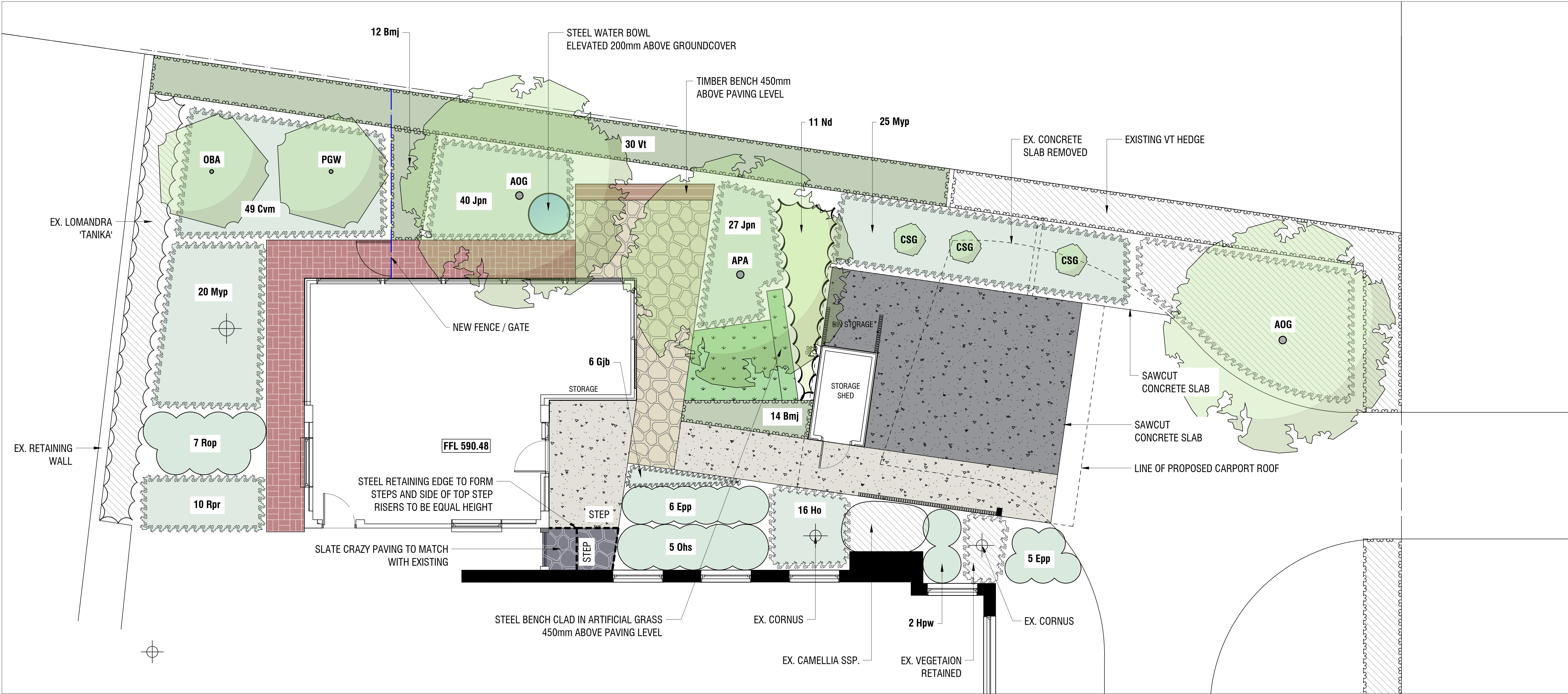


STATUS **FOR APPROVAL**

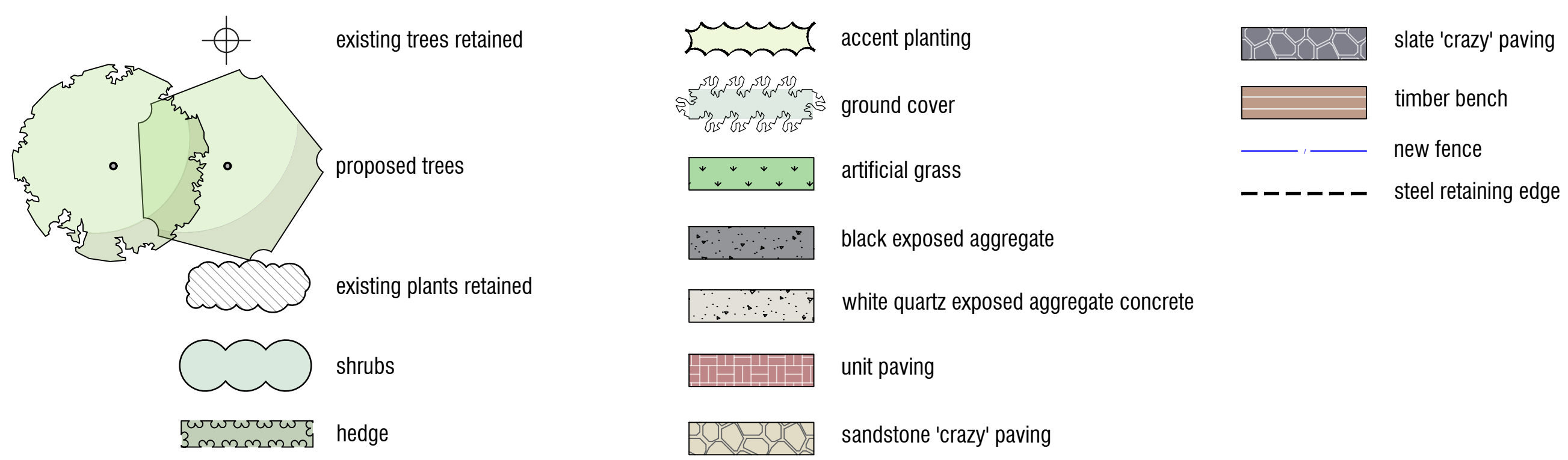
	DATE <b>JULY 2020</b>
	CLIENT <b>MARK TAYLOR &amp; FRANCES WILD</b>
 N	JOB <b>20099</b>

PROJECT		DRAWING TITLE	
12 MELBOURNE AVE DEAKIN		EXISTING TREE ASSESSMENT FOR PROPOSED TREE REMOVAL	
REV	<b>A</b>	DWG	<b>203</b>





LEGEND



PLANT SCHEDULE

TREES				ACCENT PLANTING			
SYM	NAME	SIZE	QTY	SYM	NAME	SIZE	QTY
AOG	Acer rubrum 'October Glory'	200L	2	Nd	Nandina domestica	200mm	11
APA	Acer palmatum	200L	1				
CSG	Cupressus sempervirens 'Glauca'	75L	3	GROUND COVERS			
OBA	Olea 'Barouni'	25L	1	SYM	NAME	SIZE	QTY
PGW	Punica granatum 'Wonderful'	25L	1	Cvm	Convolvulus mauretanicus	140mm	49
SHRUBS				Gjb	Geranium himalayense x pratense 'Johnson's Blue'	140mm	6
SYM	NAME	SIZE	QTY	Ho	Helleborus orientalis	140mm	16
Bmj	Buxus microphylla japonica	200mm	26	Jpn	Juniperus procumbens 'Nana'	140mm	67
Epp	Escallonia 'Pink Pixie'	200mm	11	Myp	Myoporum parvifolium	140mm	45
Hpw	Hydrangea quercifolia 'Pee Wee'	200mm	2	Rpr	Rosmarinus officinalis prostratus	140mm	10
Ohs	Osmanthus delavayi 'Heaven Scent'	200mm	5				
Rop	Rhaphiolepis indica 'Oriental Pearl'	200mm	7				
Vt	Viburnum tinus	200mm	30				

REV.	DESCRIPTION	DRAWN	APPROVED	DATE
A	FOR REVIEW	HJ	KH	13 JULY 20
-	-	-	-	-
-	-	-	-	-
-	-	-	-	-
-	-	-	-	-
-	-	-	-	-
-	-	-	-	-
-	-	-	-	-
-	-	-	-	-
-	-	-	-	-

HARRIS HOBBS

LANDSCAPES

Landscape Architect  
16 ROBE STREET  
DEAKIN ACT 2600  
p +61 2 6273 4661  
e hhl@hhl.com.au  
w www.hhl.com.au

SCALE @ A3  
1:100

0

.5

1

2

3

4

5m

STATUS FOR REVIEW

DATE  
JULY 2020

CLIENT  
MARK TAYLOR & FRANCES WILD

PROJECT  
12 MELBOURNE AVE DEAKIN

DRAWING TITLE  
DETAIL LANDSCAPE PLAN

N

JOB 20099

REV A

DWG 301