





LEGEND

EXISTING TREE TO BE RETAINED

TREE TO BE REMOVED

PROPOSED PROTECTION FENCE. REFER TO NOTES.

TREE NUMBER (FOR ASSESSMENT)

CONSTRUCTION ACCESS

VERTICAL CLEARANCE TO TREE CANOPY

NOTE:

PROTECTION OF ALL HARD AND SOFT LANDSCAPE ASSETS ON ROAD RESERVES, STREET VERGES, PUBLIC OPEN SPACES AND UNLEASED TERRITORY LAND ADJACENT TO DEVELOPMENT TO COMPLY WITH THE 'GUIDELINES FOR THE PROTECTION OF PUBLIC LANDSCAPE ASSETS ADJACENT TO DEVELOPMENT WORKS'

- 1.0 GENERAL
- ALL CONSTRUCTION WORK MUST BE CONTAINED WITHIN THE SITE EXCEPT FOR APPROVED SERVICE CONNECTIONS IN THE VERGE.
- 1.1 NOTIFICATION AND COMPLIANCE
- PRIOR TO THE COMMENCEMENT OF DEVELOPMENT WORKS ADVISE ASSET ACCEPTANCE (AA) IN WRITING THAT THE PROTECTIVE MEASURES HAVE BEEN INSTALLED IN ACCORDANCE WITH THE APPROVED LANDSCAPE MANAGEMENT AND PROTECTION PLAN (LMPP). NOTIFY THE ASSET ACCEPTANCE OFFICER OF BOTH THE COMMENCEMENT AND COMPLETION OF DEVELOPMENT/RESTORATION WORKS. (THE MANAGER ASSET ACCEPTANCE, CITY MANAGEMENT, PO BOX 352, CIVIC SQUARE, ACT 2608)
- 1.2 SUPERVISION
- VERGE RESTORATION - A LANDSCAPE ARCHITECT OR HORTICULTURIST MUST BE EMPLOYED TO OVERSEE WORK IN THE VERGE TO ENSURE ALL REQUIREMENTS ARE FOLLOWED. THEY MUST BE PRESENT DURING ANY CULTIVATION OF THE VERGE.
- 2.0 NOTES FOR LANDSCAPE MANAGEMENT & PROTECTION
- 2.1 STORAGE OF CONSTRUCTION MATERIAL
- NO CONSTRUCTION MATERIAL TO BE STORED ON VERGES, PUBLIC OPEN SPACE OR UNLEASED TERRITORY LAND.  
NO CAR PARKING OR EQUIPMENT PARKING PERMITTED ON VERGES, PUBLIC OPEN SPACE OR UNLEASED TERRITORY LAND.
- 2.2 SITE ACCOMMODATION
- NO SITE SHEDS, STORAGE SHEDS, SITE AMENITIES OR BILL BOARDS TO BE ERECTED ON VERGES, PUBLIC OPEN SPACE OR UNLEASED TERRITORY LAND EXCEPT WITH APPROVAL FROM ASSET ACCEPTANCE.
- 2.3 FENCING
- ERECT PROTECTIVE FENCE AT COMMENCEMENT OF WORKS AND REMOVE ON COMPLETION OF CONSTRUCTION AND COMMENCEMENT OF RESTORATION WORKS IN ACCORDANCE WITH THE APPROVED LMPP.  
PROTECTIVE FENCE:- 1800 HIGH CONTINUOUS MESH FENCE SUPPORTED BY STEEL POSTS WITH CONCRETE BASES IS MANDATORY.
- 2.4 EXISTING TREES
- ALL TREES LOCATED IN ROAD RESERVE, STREET VERGES, PUBLIC OPEN SPACE AND UNLEASED TERRITORY LAND ARE TO BE RETAINED (UNLESS NOTED OTHERWISE) AND REMAIN UNDAMAGED. EXISTING CLEARANCE FROM GROUND TO CANOPY IS NOT TO BE ALTERED. ENSURE CONSTRUCTION EQUIPMENT CAN PASS BENEATH LOWEST LIMB, THROUGH DRIVEWAY ACCESS. CROWNS AND APEX OF CANOPY ARE NOT TO BE ALTERED OR REDUCED. ENSURE LIFTING EQUIPMENT AND LOAD CAN CLEAR HEIGHT AND WIDTH OF TREE CROWN WITHOUT DAMAGE TO CROWN.
- 2.5 SITE ACCESS
- PROVIDE SITE ACCESS IN ACCORDANCE WITH THE APPROVED LMPP.  
ALTERNATIVE ACCESS IS PROHIBITED WITHOUT THE APPROVAL OF ASSET ACCEPTANCE.
- 2.6 SERVICE ENTRY TO SITE
- THE DEVELOPER MUST OBTAIN AND CO-ORDINATE ALL SERVICE APPROVALS. APPROVAL FOR TRENCH LOCATIONS MUST BE OBTAINED THROUGH ASSET ACCEPTANCE AT PLANNING AND DESIGN STAGE.  
SERVICE INSTALLATION CONDITIONS INCLUDE:-
  - \* BORING BELOW ROOT ZONE WITHIN THE CROWN SPREAD OF TREES
  - \* SHARED TRENCHING FOR SERVICES MANDATORY.
  - \* NUMBER OF VERGE CROSSINGS TO BE MINIMISED.
  - \* TRENCHING ACROSS THE VERGE SHALL OCCUR MIDWAY BETWEEN STREET TREES
  - \* NO TRENCHING WITHIN 5.0m OF STREET TREES.
- 2.7 SERVICE ALONG STREET
- THE DEVELOPER MUST OBTAIN AND CO-ORDINATE SERVICE APPROVALS. APPROVAL FOR TRENCH LOCATIONS MUST BE OBTAINED THROUGH ASSET ACCEPTANCE AT PLANNING AND DESIGN STAGE.  
SERVICE INSTALLATION APPROVED ALIGNMENTS INCLUDE:-
  - \* WITHIN ROAD PAVED AREA.
  - \* BORING BELOW THE ROOT ZONE WITHIN THE CROWN SPREAD OF TREES
  - \* BELOW EXISTING FOOTPATH ON THE PROPERTY LINE
  - \* IMMEDIATELY BEHIND KERB
- 2.8 PEDESTRIAN AND BICYCLE MOVEMENT
- EXISTING FOOTPATH/CYCLEPATH TO BE MAINTAINED AND REMAIN UNOBTSTRUCTED THROUGHOUT THE DEVELOPMENT WORKS.  
MAINTAIN PROTECTIVE FENCING 600 OFFSET FROM EACH SIDE OF PATH,  
ESTABLISH AND MAINTAIN AN 1800 WIDE FENCED CLEAR WAY ALONG THE ENTIRE LEASE BOUNDARY WHERE NO CONSTRUCTED FOOTPATH EXISTS.
- 2.9 LANDSCAPE MAINTENANCE AND RESTORATION
- PROVIDE CONTINUOUS CARE AND MAINTENANCE BY HORTICULTURAL PRACTICES OF SOFT LANDSCAPE ASSETS ON ROAD RESERVES, STREET VERGES, PUBLIC OPEN SPACE AND UNLEASED TERRITORY LAND ADJACENT TO THE DEVELOPMENT FOR THE DURATION OF THE WORKS (INCLUDING RESTORATION WORKS).  
GRASS AREAS SHALL HAVE A HEALTHY AND VIGOROUS GRASS SWARD APPROPRIATE TO THE AREA. IF THE STANDARD OF GRASS COVER IS TO BE IMPROVED, THE FOLLOWING REQUIREMENTS APPLY:-
  - \* LIGHTLY CULTIVATE THE SOIL TO 25-50mm DEPTH (50mm MAXIMUM TO MINIMISE DAMAGE TO TREE ROOTS). CULTIVATE ONLY IN ONE DIRECTION. AVOID MAJOR TREE ROOTS AND KEEP A MINIMUM OF ONE METRE (1.0m) AWAY FROM TREE TRUNKS.
  - \* ADD TYPE 'B' TOPSOIL AT 25-50mm DEPTH. LEVEL THE TOPSOIL AND ADD NPK FERTILISER (EQUIVALENT TO MULTIGRO) AT 40g/m2.
  - \* LAY TURF OR SOW SEED OF SUITABLE DROUGHT TOLERANT SPECIES AS SPECIFIED IN THE ACT GOVERNMENT 'SPECIFICATION FOR URBAN INFRASTRUCTURE WORKS' (ISSUE 1, REVISION 0, 2002). KEEP MOIST DURING ESTABLISHMENT.PLANT DAMAGE: DAMAGE TO TREES OR OTHER PLANTINGS TO BE RECTIFIED BY REPLACEMENT OR REHABILITATION AT THE DEVELOPER'S EXPENSE AND TO THE SATISFACTION OF CANBERRA URBAN PARKS & PLACES (CUPP).  
SOFT LANDSCAPE ASSET RESTORATION WORK IS TO BE APPROVED BY CUPP AND CARRIED OUT BY A CUPP APPROVED OPERATOR.
- 3.0 TREE ROOT PROTECTION
- PROPOSED EXCAVATION WITHIN THE DRIP ZONE OF A TREE IS RESTRICTED TO ONE SIDE OF THE TREE ONLY AND MUST BE APPROVED BY AN ASSET ACCEPTANCE OFFICER PRIOR TO EXCAVATION.  
EXCAVATION CONDITIONS:
  - \* DO NOT SEVER LARGE ROOTS (>30mm DIAMETER) CLOSER THAN HALFWAY FROM THE DRIP LINE TO THE TRUNK. HAND TRENCHING TO A DEPTH OF 300mm IS REQUIRED TO LOCATE THESE ROOTS BEFORE ANY MECHANICAL TRENCHING IS UNDERTAKEN.
  - \* ALL ROOTS TO BE CUT CLEANLY WITH SPECIFICALLY DESIGNED EQUIPMENT OR OTHER SUITABLE PRUNING EQUIPMENT WHICH WILL CUT ROOTS CLEANLY.
  - \* ROOTS EXPOSED DURING EXCAVATION MUST BE PROTECTED FROM DESICCATION. KEEP LIGHTLY WATERED OR COVER WITH HESSIAN WHICH MUST BE KEPT MOIST.
  - \* WATER TREES WHICH HAVE HAD DISTURBANCE IN THEIR ROOT ZONE. THE AMOUNT AND FREQUENCY OF WATER NEEDS TO BE ADAPTED TO THE TREE'S REQUIREMENT, BASED ON SEASONAL CONDITIONS.

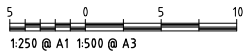
A	AB	AB	MR		09/03/2018	ISSUED FOR DESIGN ACCEPTANCE & WORKS APPROVAL
NO.	DESIGN	DRAWN	CHECKED	VERD	DATE	AMENDMENT / ISSUE

NOTES

DRAWINGS TO BE READ IN CONJUNCTION WITH THE INFORMATION CONTAINED IN THE ACCOMPANYING VEGETATION ASSESSMENT REPORT.

TREE LOCATIONS BASED ON SURVEY SUPPLIED BY THE CLIENT.

DO NOT SCALE FROM DRAWING.

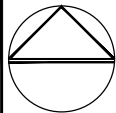


collins caddaye  
architects

37 CANBERRA AVENUE  
FORREST ACT 2603  
T: 02 6295 1433  
F: 02 6295 3192



Deakin Chambers  
14 Hannah Place  
Deakin ACT 2600  
Tel 02 6285 1955  
dsb@dsbla.com.au



Project  
Multi-Unit Development  
Block 13 Section 13  
FORREST, ACT

Client  
ADDVAL Developments

Drawing Title  
LANDSCAPE MANAGEMENT &  
PROTECTION PLAN

Scale  
Drg. No.  
3445C-G302 A

Pict Date  
Sheet No.  
2/2










LEGEND

- EXISTING TREE TO BE RETAINED
- TREE TO BE REMOVED
- PROPOSED PROTECTION FENCE. REFER TO NOTES.
- TREE NUMBER (FOR ASSESSMENT)
- CONSTRUCTION ACCESS
- VERTICAL CLEARANCE TO TREE CANOPY

NOTE:

PROTECTION OF ALL HARD AND SOFT LANDSCAPE ASSETS ON ROAD RESERVES, STREET VERGES, PUBLIC OPEN SPACES AND UNLEASED TERRITORY LAND ADJACENT TO DEVELOPMENT TO COMPLY WITH THE 'GUIDELINES FOR THE PROTECTION OF PUBLIC LANDSCAPE ASSETS ADJACENT TO DEVELOPMENT WORKS'

- 1.0 GENERAL  
ALL CONSTRUCTION WORK MUST BE CONTAINED WITHIN THE SITE EXCEPT FOR APPROVED SERVICE CONNECTIONS IN THE VERGE.
- 1.1 NOTIFICATION AND COMPLIANCE  
PRIOR TO THE COMMENCEMENT OF DEVELOPMENT WORKS ADVISE ASSET ACCEPTANCE (AA) IN WRITING THAT THE PROTECTIVE MEASURES HAVE BEEN INSTALLED IN ACCORDANCE WITH THE APPROVED LANDSCAPE MANAGEMENT AND PROTECTION PLAN (LMPP). NOTIFY THE ASSET ACCEPTANCE OFFICER OF BOTH THE COMMENCEMENT AND COMPLETION OF DEVELOPMENT/RESTORATION WORKS. (THE MANAGER ASSET ACCEPTANCE, CITY MANAGEMENT, PO BOX 352, CIVIC SQUARE, ACT 2608)
- 1.2 SUPERVISION  
VERGE RESTORATION - A LANDSCAPE ARCHITECT OR HORTICULTURIST MUST BE EMPLOYED TO OVERSEE WORK IN THE VERGE TO ENSURE ALL REQUIREMENTS ARE FOLLOWED. THEY MUST BE PRESENT DURING ANY CULTIVATION OF THE VERGE.
- 2.0 NOTES FOR LANDSCAPE MANAGEMENT & PROTECTION
- 2.1 STORAGE OF CONSTRUCTION MATERIAL  
NO CONSTRUCTION MATERIAL TO BE STORED ON VERGES, PUBLIC OPEN SPACE OR UNLEASED TERRITORY LAND.  
NO CAR PARKING OR EQUIPMENT PARKING PERMITTED ON VERGES, PUBLIC OPEN SPACE OR UNLEASED TERRITORY LAND.
- 2.2 SITE ACCOMMODATION  
NO SITE SHEDS, STORAGE SHEDS, SITE AMENITIES OR BILL BOARDS TO BE ERECTED ON VERGES, PUBLIC OPEN SPACE OR UNLEASED TERRITORY LAND EXCEPT WITH APPROVAL FROM ASSET ACCEPTANCE.
- 2.3 FENCING  
ERECT PROTECTIVE FENCE AT COMMENCEMENT OF WORKS AND REMOVE ON COMPLETION OF CONSTRUCTION AND COMMENCEMENT OF RESTORATION WORKS IN ACCORDANCE WITH THE APPROVED LMPP.  
PROTECTIVE FENCE:- 1800 HIGH CONTINUOUS MESH FENCE SUPPORTED BY STEEL POSTS WITH CONCRETE BASES IS MANDATORY.
- 2.4 EXISTING TREES  
ALL TREES LOCATED IN ROAD RESERVE, STREET VERGES, PUBLIC OPEN SPACE AND UNLEASED TERRITORY LAND ARE TO BE RETAINED (UNLESS NOTED OTHERWISE) AND REMAIN UNBROKEN. EXISTING CLEARANCE FROM GROUND TO CANOPY IS NOT TO BE ALTERED. ENSURE CONSTRUCTION EQUIPMENT CAN PASS BENEATH LOWEST LIMB, THROUGH DRIVEWAY ACCESS. CROWNS AND APEX OF CANOPY ARE NOT TO BE ALTERED OR REDUCED. ENSURE LIFTING EQUIPMENT AND LOAD CAN CLEAR HEIGHT AND WIDTH OF TREE CROWN WITHOUT DAMAGE TO CROWN.
- 2.5 SITE ACCESS  
PROVIDE SITE ACCESS IN ACCORDANCE WITH THE APPROVED LMPP.  
ALTERNATIVE ACCESS IS PROHIBITED WITHOUT THE APPROVAL OF ASSET ACCEPTANCE.
- 2.6 SERVICE ENTRY TO SITE  
THE DEVELOPER MUST OBTAIN AND CO-ORDINATE ALL SERVICE APPROVALS. APPROVAL FOR TRENCH LOCATIONS MUST BE OBTAINED THROUGH ASSET ACCEPTANCE AT PLANNING AND DESIGN STAGE.  
SERVICE INSTALLATION CONDITIONS INCLUDE:
  - \* BORING BELOW ROOT ZONE WITHIN THE CROWN SPREAD OF TREES
  - \* SHARED TRENCHING FOR SERVICES MANDATORY.
  - \* NUMBER OF VERGE CROSSINGS TO BE MINIMISED.
  - \* TRENCHING ACROSS THE VERGE SHALL OCCUR MIDWAY BETWEEN STREET TREES
  - \* NO TRENCHING WITHIN 5.0m OF STREET TREES.
- 2.7 SERVICE ALONG STREET  
THE DEVELOPER MUST OBTAIN AND CO-ORDINATE SERVICE APPROVALS. APPROVAL FOR TRENCH LOCATIONS MUST BE OBTAINED THROUGH ASSET ACCEPTANCE AT PLANNING AND DESIGN STAGE.  
SERVICE INSTALLATION APPROVED ALIGNMENTS INCLUDE:-
  - \* WITHIN ROAD PAVED AREA.
  - \* BORING BELOW THE ROOT ZONE WITHIN THE CROWN SPREAD OF TREES
  - \* BELOW EXISTING FOOTPATH ON THE PROPERTY LINE
  - \* IMMEDIATELY BEHIND KERB
- 2.8 PEDESTRIAN AND BICYCLE MOVEMENT  
EXISTING FOOTPATH/CYCLEPATH TO BE MAINTAINED AND REMAIN UNOBTSTRUCTED THROUGHOUT THE DEVELOPMENT WORKS.  
MAINTAIN PROTECTIVE FENCING 600 OFFSET FROM EACH SIDE OF PATH,  
ESTABLISH AND MAINTAIN AN 1800 WIDE FENCED CLEAR WAY ALONG THE ENTIRE LEASE BOUNDARY WHERE NO CONSTRUCTED FOOTPATH EXISTS.
- 2.9 LANDSCAPE MAINTENANCE AND RESTORATION  
PROVIDE CONTINUOUS CARE AND MAINTENANCE BY HORTICULTURAL PRACTICES OF SOFT LANDSCAPE ASSETS ON ROAD RESERVES, STREET VERGES, PUBLIC OPEN SPACE AND UNLEASED TERRITORY LAND ADJACENT TO THE DEVELOPMENT FOR THE DURATION OF THE WORKS (INCLUDING RESTORATION WORKS).  
GRASS AREAS SHALL HAVE A HEALTHY AND VIGOROUS GRASS SWARD APPROPRIATE TO THE AREA. IF THE STANDARD OF GRASS COVER IS TO BE IMPROVED, THE FOLLOWING REQUIREMENTS APPLY:-
  - \* LIGHTLY CULTIVATE THE SOIL TO 25-50mm DEPTH (50mm MAXIMUM TO MINIMISE DAMAGE TO TREE ROOTS). CULTIVATE ONLY IN ONE DIRECTION. AVOID MAJOR TREE ROOTS AND KEEP A MINIMUM OF ONE METRE (1.0m) AWAY FROM TREE TRUNKS.
  - \* ADD TYPE 'B' TOPSOIL AT 25-50mm DEPTH. LEVEL THE TOPSOIL AND ADD NPK FERTILISER (EQUIVALENT TO MULTIGRO) AT 40g/m2.
  - \* LAY TURF OR SOIL SEED OF SUITABLE DROUGHT TOLERANT SPECIES AS SPECIFIED IN THE ACT GOVERNMENT 'SPECIFICATION FOR URBAN INFRASTRUCTURE WORKS' (ISSUE 1, REVISION 0, 2002). KEEP MOIST DURING ESTABLISHMENT.
  - \* PLANT DAMAGE: DAMAGE TO TREES OR OTHER PLANTINGS TO BE RECTIFIED BY REPLACEMENT OR REHABILITATION AT THE DEVELOPER'S EXPENSE AND TO THE SATISFACTION OF CANBERRA URBAN PARKS & PLACES (CUPP).
  - \* SOFT LANDSCAPE ASSET RESTORATION WORK IS TO BE APPROVED BY CUPP AND CARRIED OUT BY A CUPP APPROVED OPERATOR.
- 3.0 TREE ROOT PROTECTION  
PROPOSED EXCAVATION WITHIN THE DRIP ZONE OF A TREE IS RESTRICTED TO ONE SIDE OF THE TREE ONLY AND MUST BE APPROVED BY AN ASSET ACCEPTANCE OFFICER PRIOR TO EXCAVATION.  
EXCAVATION CONDITIONS:
  - \* DO NOT SEVER LARGE ROOTS (>30mm DIAMETER) CLOSER THAN HALFWAY FROM THE DRIP LINE TO THE TRUNK. HAND TRENCHING TO A DEPTH OF 300mm IS REQUIRED TO LOCATE THESE ROOTS BEFORE ANY MECHANICAL TRENCHING IS UNDERTAKEN.
  - \* ALL ROOTS TO BE CUT CLEANLY WITH SPECIFICALLY DESIGNED EQUIPMENT OR OTHER SUITABLE PRUNING EQUIPMENT WHICH WILL CUT ROOTS CLEANLY.
  - \* ROOTS EXPOSED DURING EXCAVATION MUST BE PROTECTED FROM DESICCATION. KEEP LIGHTLY WATERED OR COVER WITH HESSIAN WHICH MUST BE KEPT MOIST.
  - \* WATER TREES WHICH HAVE HAD DISTURBANCE IN THEIR ROOT ZONE. THE AMOUNT AND FREQUENCY OF WATER NEEDS TO BE ADAPTED TO THE TREE'S REQUIREMENT, BASED ON SEASONAL CONDITIONS.

					NOTES										Project Multi-Unit Development Block 13 Section 13 FORREST, ACT		Drawing Title LANDSCAPE MANAGEMENT & PROTECTION PLAN			
					DRAWINGS TO BE READ IN CONJUNCTION WITH THE SPECIFICATION. DIMENSIONS ARE IN MILLIMETRES, UNLESS NOTED OTHERWISE. USE FIGURED DIMENSIONS - DO NOT SCALE FROM DRAWING.						Deakin Chambers 14 Hannah Place Deakin ACT 2600 Tel 02 6285 1955 dsb@dsbla.com.au		Client ADDVAL Developments		Scale Drg. No.		Pict Date:		Sheet No. 1/2	
A	AB	AB	MR		09/03/2018	ISSUED FOR DESIGN ACCEPTANCE & WORKS APPROVAL		CONTRACTOR MUST VERIFY ALL DIMENSIONS AND EXISTING LEVELS ON SITE PRIOR TO COMMENCEMENT OF WORK OR MAKING ANY SHOP DRAWINGS. ANY DISCREPANCIES TO BE REFERRED TO THE SUPERINTENDENT.		37 CANBERRA AVENUE FORREST ACT 2603 T: 02 6295 1433 F: 02 6295 3192						3445C-G301 A				
NO.	DESIGN	DRAWN	CHECKED	VERD	DATE	AMENDMENT / ISSUE		PROVIDE SAMPLES OF ANY SPECIFIED OR PREFERRED MATERIALS OR FINISHES (E.G. BRICKS, PAVERS) FOR SUPERINTENDENTS APPROVAL PRIOR TO PLACING ORDERS.												





TREE PROTECTION CONDITIONS

STANDARD CONDITIONS

A COPY OF THESE CONDITIONS SHALL BE KEPT ON SITE FROM THE TIME THAT THE PROTECTIVE FENCES ARE ERECTED TO THE TIME THAT ALL WORKS ARE COMPLETED ON SITE.

TREE REMOVAL

ALL PROTECTED TREES ARE TO BE RETAINED UNLESS OTHERWISE STATED IN SPECIFIC CONDITIONS BELOW.

FENCING OF PROTECTED TREES

- ALL REGULATED TREES, OTHER THAN THOSE CLASSIFIED AS BEING OF 'EXCEPTIONAL' QUALITY, SHALL BE FENCED OFF BY A CONTINUOUS 1800 HIGH CHAIN WIRE PROTECTIVE FENCE AT THE EXTENT OF THE TREE PROTECTION ZONE AS INDICATED IN THE TREE PROTECTION ACT 2005.

- ALL REGISTERED TREES AND REGULATED TREES CLASSIFIED AS BEING OF 'EXCEPTIONAL' QUALITY, SHALL BE FENCED OFF BY A CONTINUOUS 1800 HIGH CHAIN WIRE PROTECTIVE FENCE, 5 METRES FROM THE EXTENT OF THE EXISTING CANOPY.

- THE PROTECTIVE FENCE SHALL BE ERECTED PRIOR TO THE COMMENCEMENT OF ANY EARTHWORKS, CONSTRUCTION OR DEMOLITION ACTIVITY ON ANY PART OR STAGE OF THE DEVELOPMENT AND SHALL REMAIN IN PLACE UNTIL ALL CONSTRUCTION WORKS ARE COMPLETED.

- THE PROTECTIVE FENCE SHALL BE MAINTAINED IN GOOD ORDER FOR THE DURATION OF THE CONSTRUCTION WORKS.

- A TREE PROTECTION SIGN, AS SPECIFIED BY ENVIRONMENT ACT, SHALL BE PROMINENTLY DISPLAYED ON THE FENCES OF ALL FENCED OFF AREAS.

NO ACTIVITIES PERMITTED WITHIN THE FENCED OFF AREA

- NO ACTIVITIES ARE PERMITTED IN THE FENCED OFF AREA UNLESS OTHERWISE STATED IN SPECIFIC CONDITIONS BELOW.

- TREE SURGERY WILL BE PERMITTED TO TREES REQUIRING SUCH ACTION. ACTIVITY IS TO BE UNDERTAKEN IN ACCORDANCE WITH AS4373 BY A QUALIFIED ARBORICULTURIST TO ENSURE THAT THE ACTIVITY RESULTS IN A BALANCED TREE.

SPECIFIC CONDITIONS

THE FOLLOWING SPECIFIC CONDITIONS ARE BASED ON THE FOLLOWING PLANS:

- TREE MANAGEMENT PLAN- 3445C-G201-G202 REV.: A

THE ABOVE CONDITIONS SHALL BE OBSERVED EXCEPT WHERE THE FOLLOWING APPLY:

PROTECTIVE FENCING

- PROTECTIVE FENCING IS TO BE ERECTED AND MAINTAINED IN ACCORDANCE WITH THE STANDARD CONDITIONS EXCEPT FOR TREES THAT ARE EFFECTED BY ADJACENT WORKS. THESE TREES ARE TO BE FENCED TO THE TREE PROTECTION ZONE WITH THE EXCEPTION OF THE AREA IDENTIFIED AS 'EFFECTED' AND MAY INCLUDE A ONE (1) METRE BUFFER AREA TO ALLOW WORKS TO OCCUR.

- FOR THE PURPOSE OF THESE CONDITIONS, THE AREA INSIDE THE PROTECTIVE FENCING IS REFERRED TO AS THE 'FENCED OFF AREA'.

TREE REMOVAL

ONLY TREES THAT HAVE BEEN ENDORSED WITHIN THE TREE MANAGEMENT PLAN AS MARKED FOR REMOVAL MAY BE REMOVED

SERVICES

SERVICES AND UTILITIES RETICULATION IS PERMITTED IN ACCORDANCE WITH THE FOLLOWING CONDITIONS:

- WORKS UNDER THE CANOPY EXTENT MUST BE UNDERTAKEN BY UNDERBORING.

- WORKS WITHIN THE TREE PROTECTION ZONE BUT OUTSIDE THE DRIP LINE MUST BE UNDERTAKEN BY HAND EXCAVATION.

- NO ROOTS GREATER THAN 50 IN DIAMETER ARE DAMAGED; AND

- ARE AT THE MINIMUM DEPTH PROVIDED BY THE RELEVANT STANDARDS AND AUTHORITY REQUIREMENTS.

LOW IMPACT WORKS

LOW IMPACT ACTIVITY MAY OCCUR WITHIN THE FENCED OFF AREA OF TREES (OTHER THAN REGISTERED TREES AND THOSE CLASSIFIED AS BEING OF EXCEPTIONAL QUALITY) FOR THE PURPOSE OF LIGHT WORKS, WHICH INCLUDES THE CONSTRUCTION OF FOOTPATHS, BIKE PATHS, DRIVEWAYS, SWALE DRAINS, SPECIFIC FOOTING, GARDEN BEDS AND THE LIKE, PROVIDED THE ACTIVITY IS IN ACCORDANCE WITH THE FOLLOWING CONDITIONS:

- THE CULTIVATION OF SOIL FOR IRRIGATION AND SHRUB BEDS IS NOT CONSIDERED A GROUNDWORK ACTIVITY PROVIDED IT IS IN ACCORDANCE WITH THE LIMITATIONS BELOW. GENERALLY, NO ACTIVITY OCCURS WITHIN 3 METRES OF THE TRUNK, WITH THE EXCEPTION OF LANDSCAPING ACTIVITIES SPECIFIED BELOW.

- GARDEN BEDS, WHERE WITHIN 3 METRES OF THE TRUNK MUST BE NO GREATER THAN 300 IN DEPTH, EXCAVATION IS LIMITED TO 50 AND WHERE THE GARDEN BEDS ADJOIN A TREE, A GRAVEL BREATHING LAYER IS USED.

- FENCES AND WALLS WITHIN THE DRIP LINE AND MORE THAN 3 METRES FROM THE TRUNK WILL NOT BE ALLOWED UNLESS PIERS ARE USED AT 2.5m CENTRES. NO STRIP FOOTINGS PERMITTED.

- ANY SOIL REQUIRED FOR LANDSCAPING AND IRRIGATION PURPOSES ADJACENT TO TREES MUST NOT BE EXCAVATED BELOW 50 AND RESULT IN FILL WHICH WOULD EXCEED THE NATURAL SURFACE LEVEL BY 100.

- GENERALLY, EXCAVATION IS LIMITED TO A DEPTH OF 150 BELOW NATURAL GROUND LEVEL, EXCEPT WHERE IT MAY BE SPECIFIED WITHIN THE SPECIFIC CONDITIONS.

- NO ROOTS GREATER THAN 50 IN DIAMETER ARE DAMAGED;

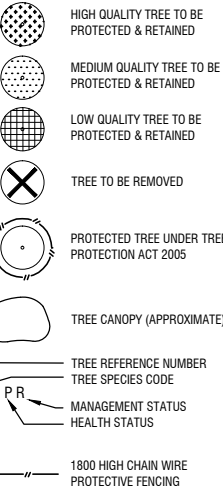
- THE EXCAVATED AREA FOR FOOTPATHS, SWALE DRAINS, BIKE PATHS, etc IS LESS THAN 2.5 METRES IN WIDTH.

- PROTECTIVE AREAS MAY BE MOVED TO PROVIDE SUFFICIENT SPACE TO ALLOW FOOTPATHS, BIKE PATHS OR SWALE DRAINS TO BE CONSTRUCTED WHILST CONTINUING TO PROTECT AREAS NOT AFFECTED BY THE ACTIVITY; AND

- WHERE THERE ARE EXISTING STRUCTURES, PATHS AND SERVICES, LOW IMPACT WORKS MAY BE UNDERTAKEN PROVIDED THERE IS NO INCREASE IN THE DEVELOPMENT FOOTPRINT AND EXCAVATION IS LIMITED TO A DEPTH OF 300 BELOW NATURAL GROUND LEVEL.

- GARDEN BEDS, WHERE WITHIN 3 METRES OF THE TRUNK MUST BE NO GREATER THAN 300 IN DEPTH, EXCAVATION IS LIMITED TO 50 AND WHERE THE GARDEN BEDS ADJOIN A TREE, A GRAVEL BREATHING LAYER IS USED.

LEGEND & NOTES



KEY TO SPECIES

ACd	Acacia dealbata
CTp	Cotoneaster pannosa
CUSp	Cupressus sp.
Ebi	Eucalyptus bicostata
EUB	Eucalyptus bridgesiana
Ebi	Eucalyptus dives
Emf	Eucalyptus mannifera
Eme	Eucalyptus melliodora
EUn	Eucalyptus nicholii
Ebl	Eucalyptus blakelyi
FRo	Fraxinus oxycarpa
POa	Populus alba
QUp	Quercus palustris
QUR	Quercus robur

HEALTH STATUS

ASSESSMENT BASED ON CROWN AND TRUNK APPEARANCE

G	GOOD
F	FAIR
P	POOR

MANAGEMENT STATUS

E	EXTRA HIGH - EXCELLENT TREES TO BE RETAINED REQUIRING ADDITIONAL PROTECTION
H	HIGH - REPRESENTS THE EXISTING TREES WHICH ARE TO BE RETAINED AND PROTECTED
M	MEDIUM - TREE/GROUP OF TREES WHICH WOULD BE DESIRABLE TO RETAIN, BUT WOULD NOT WARRANT DESIGN EXPENDITURE TO RETAIN
P	POOR - SPECIMENS OF POOR QUALITY OR OF NO LANDSCAPE SIGNIFICANCE

REFER VEGETATION ASSESSMENT DATED 09/03/2018

NOTES

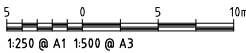
DRAWINGS TO BE READ IN CONJUNCTION WITH THE SPECIFICATION.

DIMENSIONS ARE IN MILLIMETRES, UNLESS NOTED OTHERWISE.

USE FIGURED DIMENSIONS - DO NOT SCALE FROM DRAWING.

CONTRACTOR MUST VERIFY ALL DIMENSIONS AND EXISTING LEVELS ON SITE PRIOR TO COMMENCEMENT OF WORK OR MAKING ANY SHOP DRAWINGS. ANY DISCREPANCIES TO BE REFERRED TO THE SUPERINTENDENT.

PROVIDE SAMPLES OF ANY SPECIFIED OR PREFERRED MATERIALS OR FINISHES (E.G. BRICKS, PAVING) FOR SUPERINTENDENTS APPROVAL PRIOR TO PLACING ORDERS.

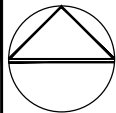


collins caddaye  
architects

37 CANBERRA AVENUE  
FORREST ACT 2603  
T: 02 6295 1433  
F: 02 6295 3192



Deakin Chambers  
14 Hannah Place  
Deakin ACT 2600  
Tel 02 6285 1955  
dsb@dsbla.com.au



Project

Multi-Unit Development  
Block 13 Section 13  
FORREST, ACT

Client

ADDVAL Developments

Drawing Title

TREE MANAGEMENT &  
PROTECTION PLAN

Scale

Plot Date:

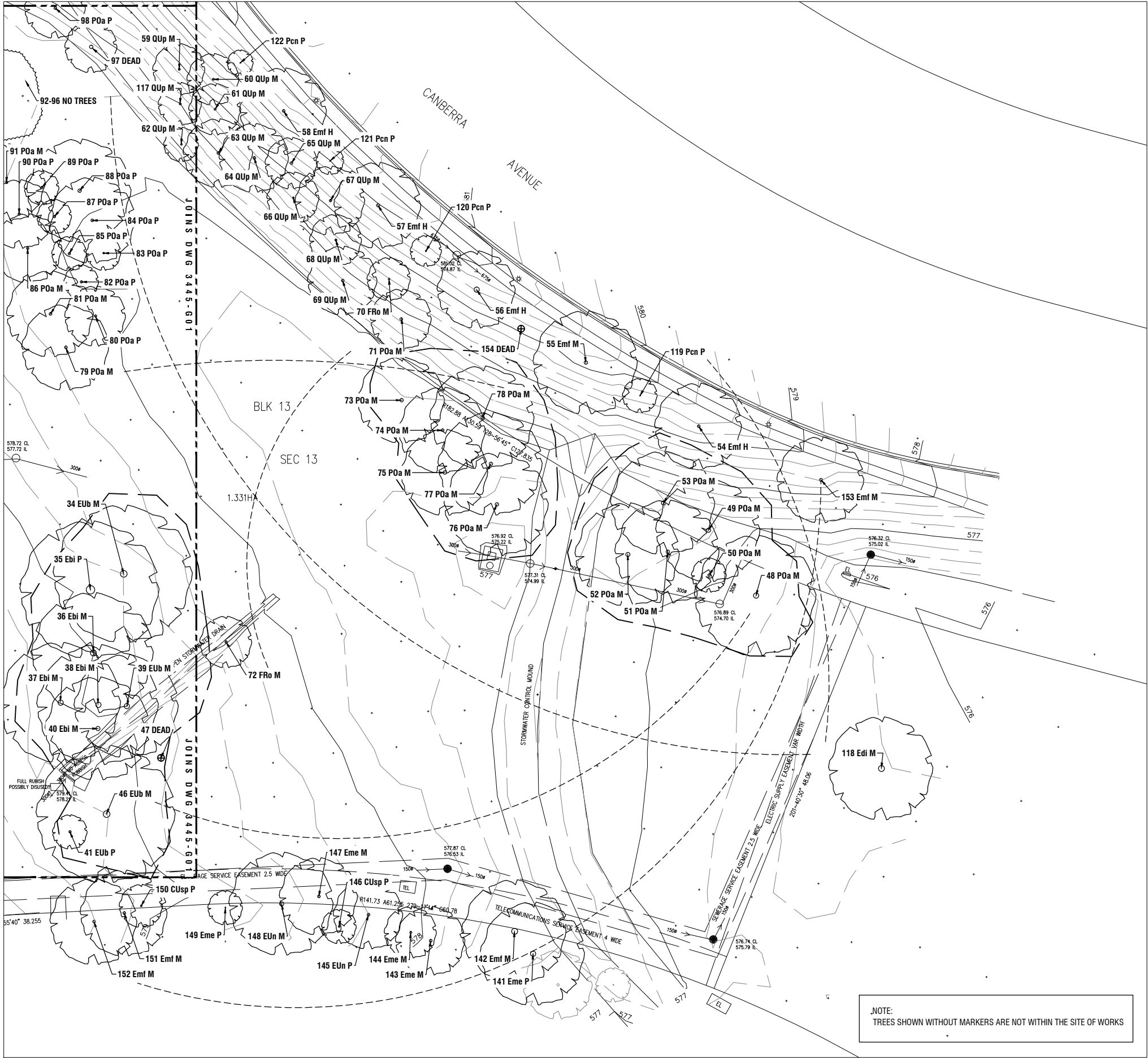
Drg. No.

3445C-G201 A

Sheet No.

2/3

A	AB	AB	MR		09/03/2018	ISSUED FOR DESIGN ACCEPTANCE & WORKS APPROVAL
NO.	DESIGN	DRAWN	CHECKED	VERD	DATE	AMENDMENT / ISSUE



LEGEND & NOTES

- 100 Pop M
- SURVEYED TREE SYMBOL WITH REFERENCE NUMBER, SPECIES CODE AND TREE MANAGEMENT STATUS.
- TREE NOT WITHIN SITE OF WORKS

MANAGEMENT STATUS

- E EXTRA HIGH - EXCELLENT TREES TO BE RETAINED REQUIRING ADDITIONAL PROTECTION
- H HIGH - REPRESENTS THE EXISTING TREES WHICH ARE TO BE RETAINED AND PROTECTED
- M MEDIUM - TREE/GROUP OF TREES WHICH WOULD BE DESIRABLE TO RETAIN, BUT WOULD NOT WARRANT DESIGN EXPENDITURE TO RETAIN
- P POOR - SPECIMENS OF POOR QUALITY OR OF NO LANDSCAPE SIGNIFICANCE

KEY TO SPECIES

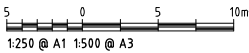
- ACd Acacia dealbata  
CTP Cotoneaster pannosa  
CUp Cupressus sp.  
Ebi Eucalyptus bicostata  
EUp Eucalyptus bridgesiana  
Edi Eucalyptus dives  
Emf Eucalyptus mannifera  
Eme Eucalyptus melliodora  
EUn Eucalyptus nicholii  
Ebi Eucalyptus blakelyi  
FRo Fraxinus oxycarpa  
POa Populus alba  
QUp Quercus palustris  
QUR Quercus robur

.NOTE:  
TREES SHOWN WITHOUT MARKERS ARE NOT WITHIN THE SITE OF WORKS

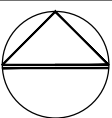
This vegetation assessment has been completed in accordance with the Tree Protection Act 2005 Part 4 s31 (Guidelines for Tree Management Plans)

A	AB	AB	MR		09/03/2018	ISSUED FOR INFORMATION
NO.	DESIGN	DRAWN	CHECKED	VER'D	DATE	AMENDMENT / ISSUE

NOTES  
DRAWINGS TO BE READ IN CONJUNCTION WITH THE INFORMATION CONTAINED IN THE ACCOMPANYING VEGETATION ASSESSMENT REPORT.  
TREE LOCATIONS BASED ON SURVEY SUPPLIED BY THE CLIENT.  
DO NOT SCALE FROM DRAWING.



Deakin Chambers  
14 Hannah Place  
Deakin ACT 2600  
Tel 02 6285 1955  
dsb@dsbla.com.au



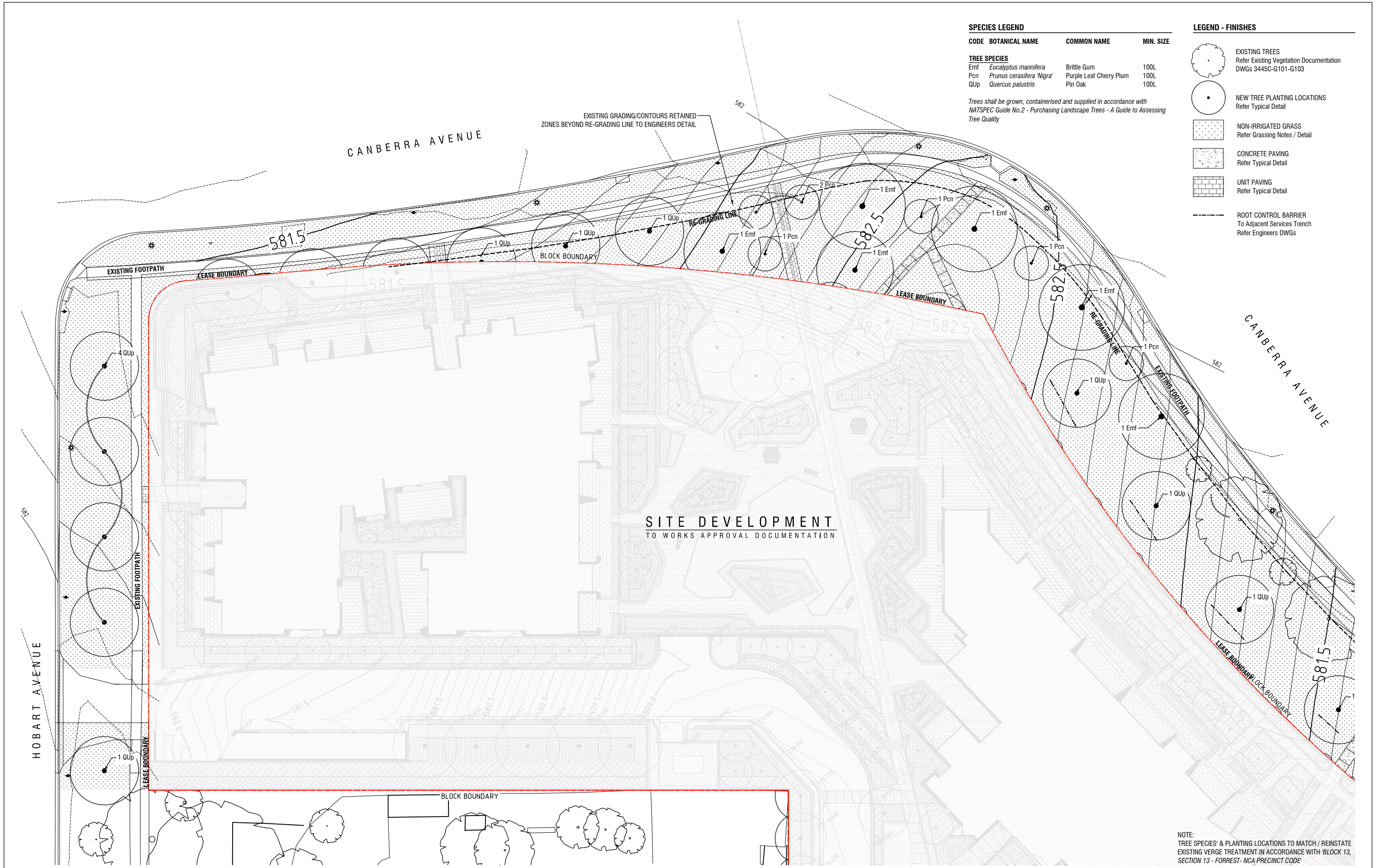
Project  
Multi-Unit Development  
Block 13 Section 13  
FORRESTER, ACT  
Client  
ADDVAL Developments

Drawing Title  
VEGETATION ASSESSMENT

Scale  
Drg. No.  
3445C-G102 A

Plot Date:  
Sheet No.  
2/2





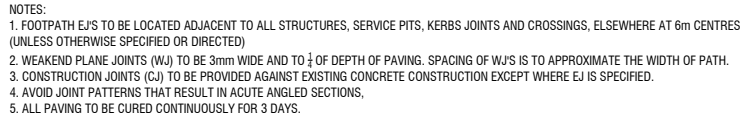
SPECIES LEGEND			
CODE	BOTANICAL NAME	COMMON NAME	MIN. SIZE
TREE SPECIES			
Emf	<i>Eucalyptus mannifera</i>	Brittle Gum	100L
Pcn	<i>Prunus cerasifera 'Nigra'</i>	Purple Leaf Cherry Plum	100L
QUp	<i>Quercus palustris</i>	Pin Oak	100L

Trees shall be grown, containerised and supplied in accordance with NATSPEC Guide No.2 - Purchasing Landscape Trees - A Guide to Assessing Tree Quality

LEGEND - FINISHES	
	EXISTING TREES Refer Existing Vegetation Documentation DWGs 3445C-G101-G103
	NEW TREE PLANTING LOCATIONS Refer Typical Detail
	NON-IRRIGATED GRASS Refer Grassing Notes / Detail
	CONCRETE PAVING Refer Typical Detail
	UNIT PAVING Refer Typical Detail
	ROOT CONTROL BARRIER To Adjacent Services Trench Refer Engineers DWGs

NOTE:  
TREE SPECIES' & PLANTING LOCATIONS TO MATCH / REINSTATE  
EXISTING VERGE TREATMENT IN ACCORDANCE WITH 'BLOCK 13,  
SECTION 13 - FORREST- NCA PRECINCT CODE'

<div><div>ADDVAL</div><div>collins caddaye architects</div><div>37 CANBERRA AVENUE FORREST ACT 2603 T: 02 6295 1433 F: 02 6295 3192</div><div><div>dsb</div><div>Landscape Architects</div><div>Deakin Chambers 14 Hannah Place Deakin ACT 2600 Tel 02 6285 1955 dsb@dsbla.com.au</div></div></div>					<div><div>Project</div><div>Multi-Unit Development Block 13 Section 13 FORREST, ACT</div><div>Client</div><div>ADDVAL Developments</div></div>		<div><div>Drawing Title</div><div>OFF-SITE WORKS PLAN AREA 1</div><div>Scale</div><div>Plot Date:</div><div>Sheet No.</div><div>3445C-G401 B</div><div>1/3</div></div>																						
<table><tr><td>NO.</td><td>DESIGN</td><td>DRAWN</td><td>CHECKED</td><td>VERD</td><td>DATE</td><td>AMENDMENT / ISSUE</td></tr><tr><td>B A</td><td>AB</td><td>AB</td><td>MR</td><td>MR</td><td>21/03/2018</td><td>ISSUED FOR WORKS APPROVAL</td></tr><tr><td>A</td><td>AB</td><td>AB</td><td>MR</td><td>MR</td><td>09/03/2018</td><td>ISSUED FOR WORKS APPROVAL</td></tr></table>					NO.	DESIGN	DRAWN	CHECKED	VERD	DATE	AMENDMENT / ISSUE	B A	AB	AB	MR	MR	21/03/2018	ISSUED FOR WORKS APPROVAL	A	AB	AB	MR	MR	09/03/2018	ISSUED FOR WORKS APPROVAL	<div><div>NOTES</div><div>DRAWINGS TO BE READ IN CONJUNCTION WITH THE SPECIFICATION. DIMENSIONS ARE IN MILLIMETRES, UNLESS NOTED OTHERWISE. USE FIGURED DIMENSIONS - DO NOT SCALE FROM DRAWING. CONTRACTOR MUST VERIFY ALL DIMENSIONS AND EXISTING LEVELS ON SITE PRIOR TO COMMENCEMENT OF WORK OR MAKING ANY SHOP DRAWINGS. ANY DISCREPANCIES TO BE REFERRED TO THE SUPERINTENDENT. PROVIDE SAMPLES OF ANY SPECIFIED OR PREFERRED MATERIALS OR FINISHES (E.G. BRICKS, PAVING) FOR SUPERINTENDENTS APPROVAL PRIOR TO PLACING ORDERS.</div></div>		<div><div>0 2 4 6 8 10m</div><div>1:200 @ A1 1:400 @ A3</div></div>	
NO.	DESIGN	DRAWN	CHECKED	VERD	DATE	AMENDMENT / ISSUE																							
B A	AB	AB	MR	MR	21/03/2018	ISSUED FOR WORKS APPROVAL																							
A	AB	AB	MR	MR	09/03/2018	ISSUED FOR WORKS APPROVAL																							



N.T.S. SECTION

N.T.S.



## SECTION

## SECTION

USE SEED MIXTURES AS FOLLOWS.

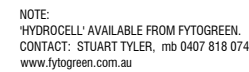
MIX A. 'DWARF' TYPE TALL FESCUE SUMMER DRYLAND GRASS MIXTURE (SOWING PERIOD FROM SEPT TO FEB)		
	PERCENT BY WEIGHT	SOWING RATE KG/HA
'DWARF' TYPE TALL FESCUE	55	155
FINE LEAF PERENNIAL RYEGRASS	15	40
CREEPING RED FESCUE	15	40
WHITE CLOVER	5	15
COUCHGRASS (HULLED)	10	30
		TOTAL - 280

	PERCENT BY WEIGHT	SOWING RATE KG/HA
'DWARF' TYPE TALL FESCUE	62	155
FINE LEAF PERENNIAL RYEGRASS	16	40
CREEPING RED FESCUE	16	40
WHITE CLOVER	6	15
		TOTAL - 250



N.T.S.

## SECTION

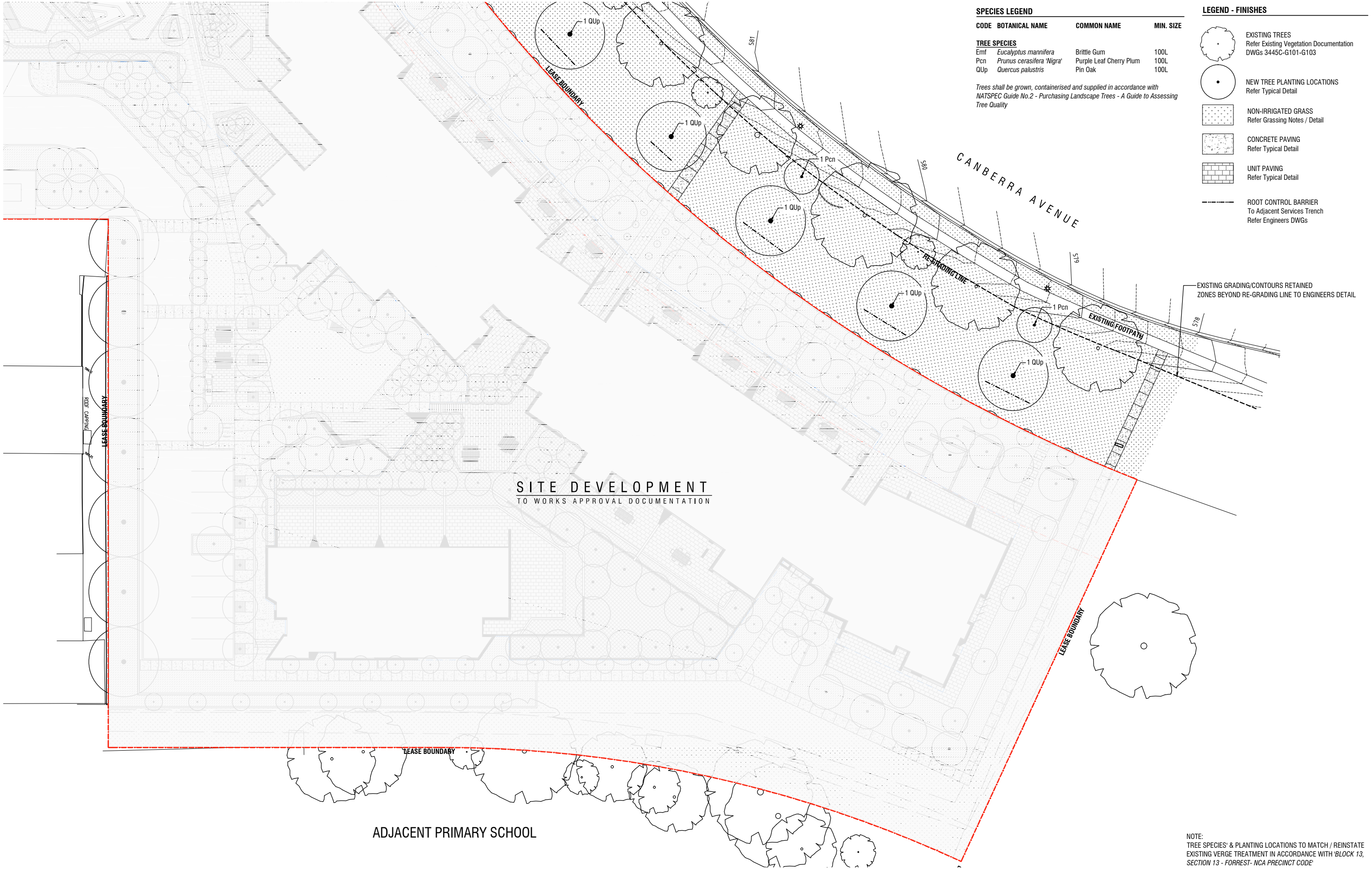


N.T.S.

## SECTION

[illegible]










SPECIES LEGEND			
CODE	BOTANICAL NAME	COMMON NAME	MIN. SIZE
<b>TREE SPECIES</b>			
Emf	<i>Eucalyptus mannifera</i>	Brittle Gum	100L
Pcn	<i>Prunus cerasifera</i> 'Nigra'	Purple Leaf Cherry Plum	100L
QUp	<i>Quercus palustris</i>	Pin Oak	100L

Trees shall be grown, containerised and supplied in accordance with NATSPEC Guide No.2 - Purchasing Landscape Trees - A Guide to Assessing Tree Quality

LEGEND - FINISHES	
	EXISTING TREES Refer Existing Vegetation Documentation DWGs 3445C-G101-G103
	NEW TREE PLANTING LOCATIONS Refer Typical Detail
	NON-IRRIGATED GRASS Refer Grassing Notes / Detail
	CONCRETE PAVING Refer Typical Detail
	UNIT PAVING Refer Typical Detail
	ROOT CONTROL BARRIER To Adjacent Services Trench Refer Engineers DWGs

EXISTING GRADING/CONTOURS RETAINED  
ZONES BEYOND RE-GRADING LINE TO ENGINEERS DETAIL

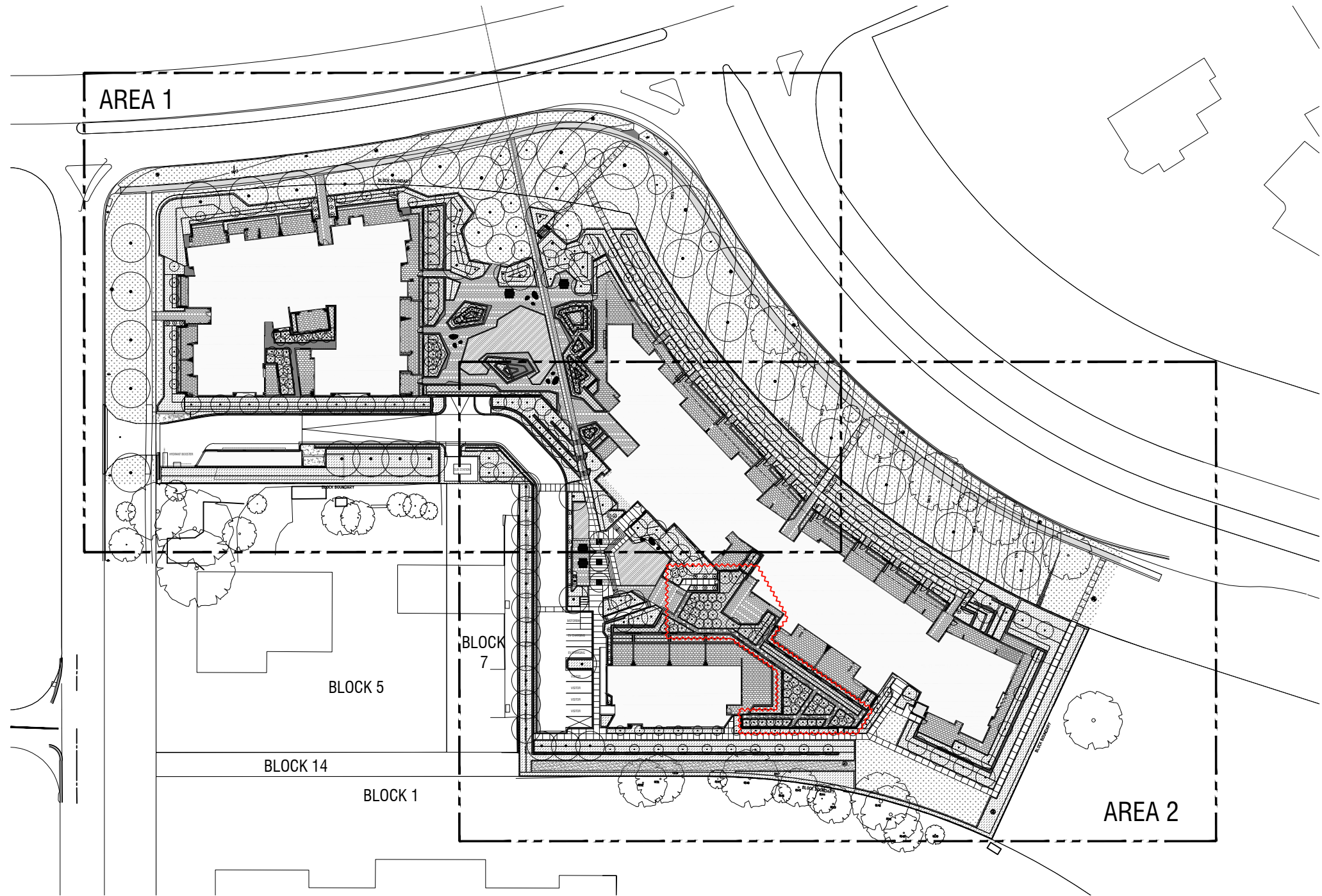
						NOTES DRAWINGS TO BE READ IN CONJUNCTION WITH THE SPECIFICATION. DIMENSIONS ARE IN MILLIMETRES, UNLESS NOTED OTHERWISE. USE FIGURED DIMENSIONS - DO NOT SCALE FROM DRAWING. CONTRACTOR MUST VERIFY ALL DIMENSIONS AND EXISTING LEVELS ON SITE PRIOR TO COMMENCEMENT OF WORK OR MAKING ANY SHOP DRAWINGS. ANY DISCREPANCIES TO BE REFERRED TO THE SUPERINTENDENT. PROVIDE SAMPLES OF ANY SPECIFIED OR PREFERRED MATERIALS OR FINISHES (EG.BRICKS, PAVERS) FOR SUPERINTENDENTS APPROVAL PRIOR TO PLACING ORDERS.		  <div><div>collins caddaye architects</div><div>37 CANBERRA AVENUE FORREST ACT 2603 T: 02 6295 1433 F: 02 6295 3192</div><div><div>dsb Landscape Architects</div></div><div>Deakin Chambers 14 Hannah Place Deakin ACT 2600 Tel 02 6285 1955 dsb@dsbla.com.au</div></div>				Project Multi-Unit Development Block 13 Section 13 FORREST, ACT  Client ADDVAL Developments		Drawing Title OFF-SITE WORKS PLAN AREA 1  Scale Drg. No. 3445C-G402 A  Plot Date: Sheet No. 2/3	
A	AB	AB	MR		09/03/2018	ISSUED FOR WORKS APPROVAL									
NO.	DESIGN	DRAWN	CHECKED	VER'D	DATE	AMENDMENT / ISSUE									



# MULTI-UNIT DEVELOPMENT BLOCK 13 SECTION 13, FORREST, ACT

## LANDSCAPE DOCUMENTATION ISSUE FOR WORKS APPROVAL

MAY 2018



### DRAWING LIST

3445C-F101	COVER & NOTES
3445C-F102	LEGEND AND SPECIES LIST
3445C-F201	FINISHES PLAN - AREA 1
3445C-F202	FINISHES PLAN - AREA 2
3445C-F301	PLANTING PLAN - AREA 1
3445C-F302	PLANTING PLAN - AREA 2
3445C-F401	LANDSCAPE PERSPECTIVES
3445C-F501	LANDSCAPE DETAILS - SOFTSCAPE
3445C-F501	LANDSCAPE DETAILS - HARDSCAPE

### GENERAL NOTES

- THE DRAWINGS SHALL BE READ IN CONJUNCTION WITH ALL ARCHITECTURAL AND OTHER CONSULTANTS DRAWINGS AND SPECIFICATIONS.
- CONTRACTOR MUST VERIFY ALL DIMENSIONS AND EXISTING LEVELS ON SITE PRIOR TO COMMENCEMENT OF WORK OR MAKING ANY SHOP DRAWINGS. ANY DISCREPANCIES TO BE REFERRED TO THE LANDSCAPE ARCHITECT.
- IF ANY DISCREPANCY OCCURS BETWEEN DRAWINGS AND SPECIFICATIONS IT SHOULD BE REFERRED TO THE LANDSCAPE ARCHITECT BEFORE PROCEEDING WITH WORK.
- UNLESS SPECIFIED OTHERWISE LEVELS ARE IN METRES AND DIMENSIONS ARE IN MILLIMETRES.
- VERIFY THE LOCATION OF ALL SERVICES AND ALL EXISTING STRUCTURES, PAVEMENTS, FENCES AND VEGETATION ON SITE PRIOR TO COMMENCEMENT OF WORKS.
- REFER SURVEYOR AS NECESSARY. LAYOUT TO BE CONDUCTED BY REGISTERED SURVEYOR. CONTRACTOR WILL BE PROVIDED WITH DIGITAL COPY OF THE DRAWINGS.
- SET-OUT ALL WORKS FOR APPROVAL BY THE LANDSCAPE ARCHITECT.
- PROVIDE SAMPLES OF ANY SPECIFIED OR PREFERRED MATERIALS OR FINISHES (EG.BRICKS, PAVERS) FOR LANDSCAPE ARCHITECTS APPROVAL PRIOR TO PLACING ORDERS.
- USE FIGURED DIMENSIONS - DO NOT SCALE FROM DRAWING.
- COORDINATE ALL WORKS WITH OTHER TRADES.

### STANDARDS

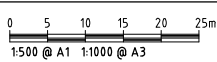
- ALL CONSTRUCTION WORK SHALL BE CARRIED OUT IN ACCORDANCE WITH THE 'STANDARD SPECIFICATION FOR URBAN INFRASTRUCTURE WORKS' (TAMS).
- ALL EROSION AND SEDIMENT CONTROL MEASURES SHALL BE IN ACCORDANCE WITH ENVIRONMENT ACT'S 'GUIDELINES FOR EROSION AND SEDIMENT CONTROL ON BUILDING SITES'.
- CONFORM TO THE FOLLOWING STANDARDS:
- AS 1428.1 - DESIGN FOR ACCESS AND MOBILITY PART 1 - ACCESS TO BUILDINGS
  - AS 1428.2 - DESIGN FOR ACCESS AND MOBILITY PART 2 - ENHANCED AND ADDITIONAL REQUIREMENTS - BUILDINGS AND FACILITIES
  - AS 1428.4 - DESIGN FOR ACCESS AND MOBILITY PART 4 - TACTILE INDICATORS
  - AS 2890.3 - PARKING FACILITIES PART 3 - BICYCLE PARKING FACILITIES
  - AS 2899 - PUBLIC INFORMATION SYMBOL SIGNS
  - AS 3661.1 - SLIP RESISTANCE OF PEDESTRIAN SURFACES
  - AS 4586 - SLIP RESISTANCE CLASSIFICATION OF NEW PEDESTRIAN SURFACE MATERIALS
  - AS 1742 - TRAFFIC CONTROL DEVICES
  - AS 2890.3 BICYCLE PARKING FACILITIES

D	AB	AB	MR	👤	04/06/2018	ISSUE FOR WORKS APPROVAL
C	AB	AB	MR	👤	14/05/2018	ISSUE FOR WORKS APPROVAL
B	AB	AB	MR	👤	18/04/2018	ISSUE FOR WORKS APPROVAL
A	AB	AB	MR	👤	10/04/2018	DRAFT FOR COORDINATION / PROGRESS REVIEW
NO.	DESIGN	DRAWN	CHECKED	VERD	DATE	AMENDMENT / ISSUE

NOTES  
DRAWINGS TO BE READ IN CONJUNCTION WITH THE SPECIFICATION.  
DIMENSIONS ARE IN MILLIMETRES, UNLESS NOTED OTHERWISE.  
USE FIGURED DIMENSIONS - DO NOT SCALE FROM DRAWING.

CONTRACTOR MUST VERIFY ALL DIMENSIONS AND EXISTING LEVELS ON SITE PRIOR TO COMMENCEMENT OF WORK OR MAKING ANY SHOP DRAWINGS. ANY DISCREPANCIES TO BE REFERRED TO THE SUPERINTENDENT.

PROVIDE SAMPLES OF ANY SPECIFIED OR PREFERRED MATERIALS OR FINISHES (EG.BRICKS, PAVERS) FOR SUPERINTENDENTS APPROVAL PRIOR TO PLACING ORDERS.

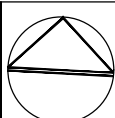


collins caddaye  
architects

37 CANBERRA AVENUE  
FORREST ACT 2603  
T: 02 6295 1433  
F: 02 6295 3192



Deakin Chambers  
14 Hannah Place  
Deakin ACT 2600  
Tel 02 6285 1955  
dsb@dsbla.com.au



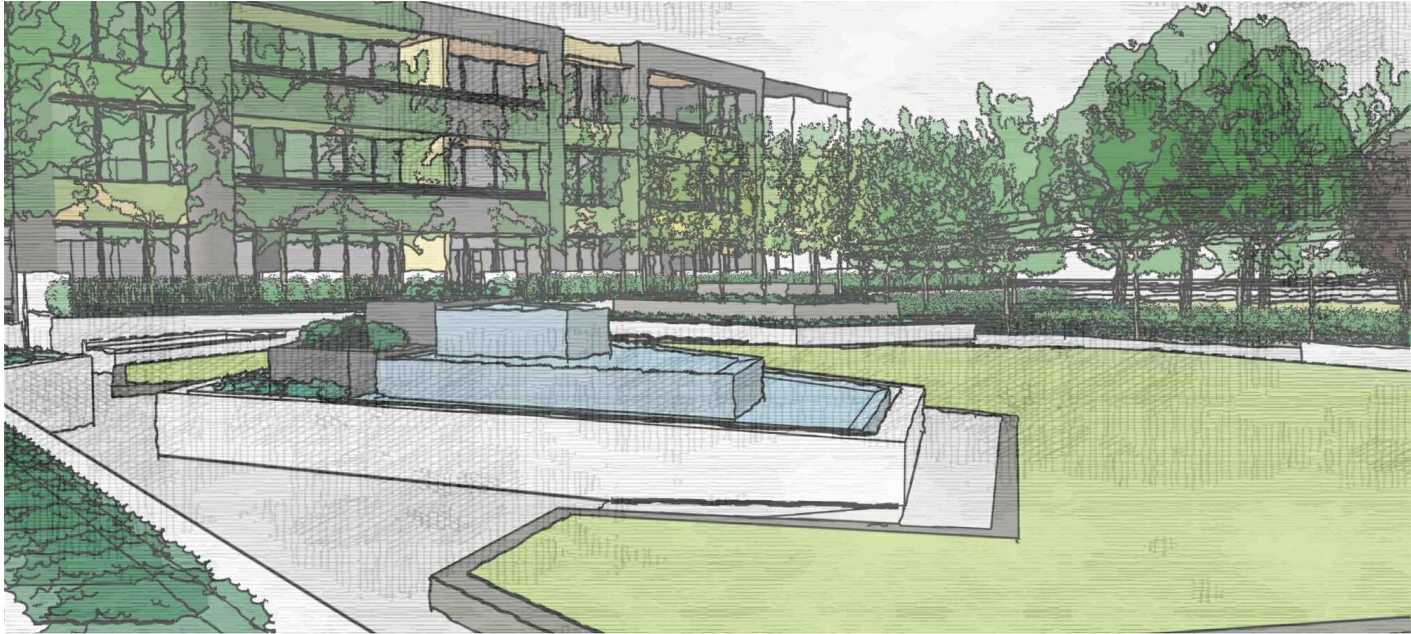
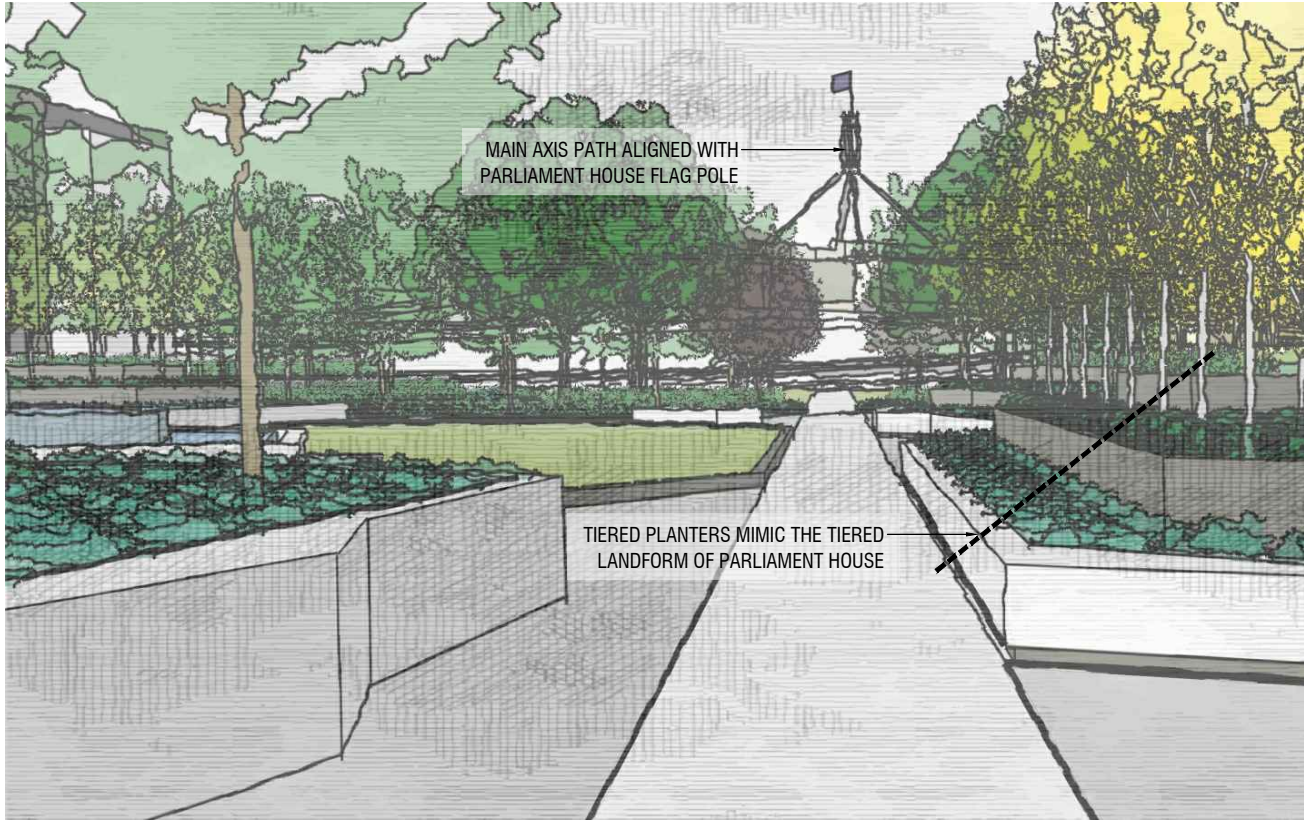
Project  
Multi-Unit Development  
Block 13 Section 13  
FORREST, ACT  
Client  
ADDVAL Developments


Drawing Title  
COVER & NOTES

Scale  
Drg. No.  
3445C-F101 D

Plot Date:  
Sheet No.  
1/2





E A	AB AB	AB AB	MR MR		18/04/2018 10/04/2018	ISSUE FOR WORKS APPROVAL DRAFT FOR COORDINATION / PROGRESS REVIEW
NO.	DESIGN	DRAWN	CHECKED	VER'D	DATE	AMENDMENT / ISSUE

NOTES  
DRAWINGS TO BE READ IN CONJUNCTION WITH THE SPECIFICATION.  
DIMENSIONS ARE IN MILLIMETRES, UNLESS NOTED OTHERWISE.  
USE FIGURED DIMENSIONS - DO NOT SCALE FROM DRAWING.  
CONTRACTOR MUST VERIFY ALL DIMENSIONS AND EXISTING LEVELS ON SITE PRIOR  
TO COMMENCEMENT OF WORK OR MAKING ANY SHOP DRAWINGS. ANY  
DISCREPANCIES TO BE REFERRED TO THE SUPERINTENDENT.  
PROVIDE SAMPLES OF ANY SPECIFIED OR PREFERRED MATERIALS OR FINISHES  
(E.G. BRICKS, PAVING) FOR SUPERINTENDENTS APPROVAL PRIOR TO PLACING  
ORDERS.



collins caddaye  
architects

37 CANBERRA AVENUE  
FOREST ACT 2603  
T: 02 6295 1433  
F: 02 6295 3192



Deakin Chambers  
14 Hannah Place  
Deakin ACT 2600  
Tel 02 6285 1955  
dsb@dsbla.com.au

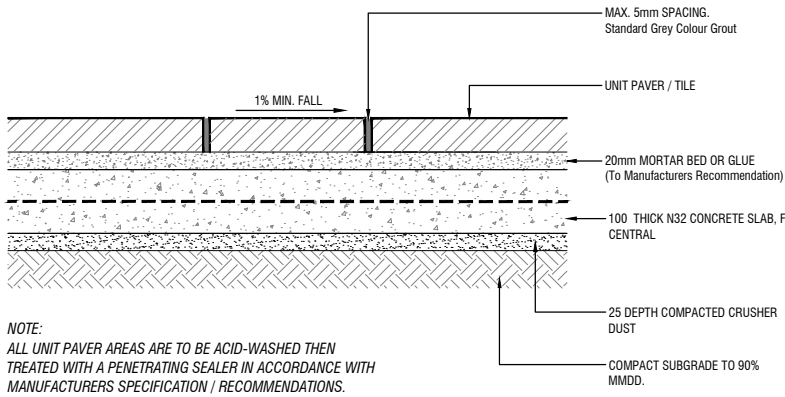
Project  
Multi-Unit Development  
Block 13 Section 13  
FORREST, ACT  
Client  
ADDVAL Developments

Drawing Title  
LANDSCAPE PERSPECTIVES  
UPPER COMMUNAL AREA

Scale  
Drg. No.  
3445C-F401 B

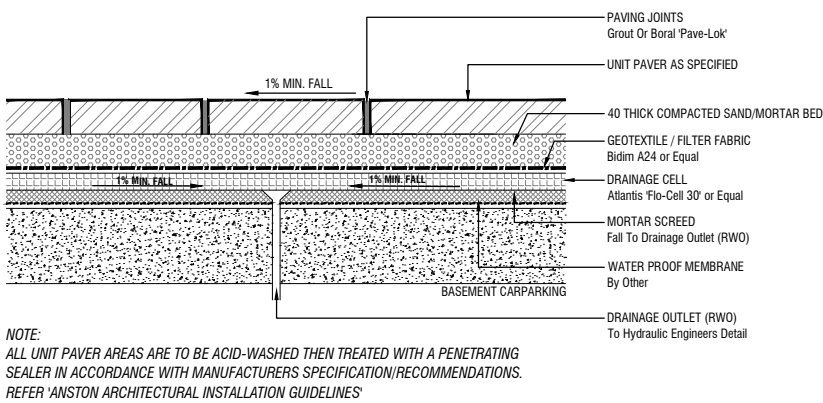
Plot Date  
Sheet No.  
1/1





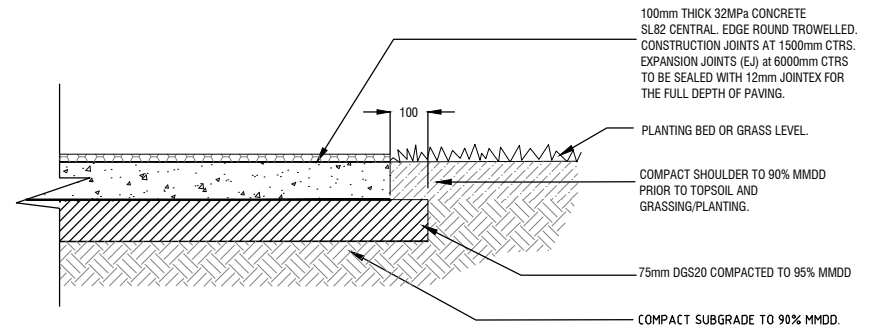
UP-1A & UP-2A: UNIT PAVING (ON GROUND)

N.T.S. SECTION



UP-1B & UP-2B: UNIT PAVING (ON PODIUM)

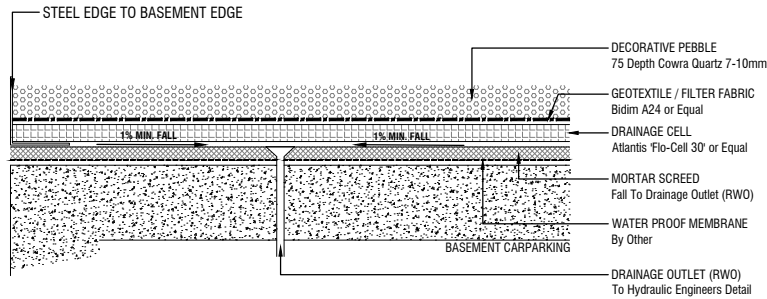
N.T.S. SECTION



- NOTES:
1. FOOTPATH E/J'S TO BE LOCATED ADJACENT TO ALL STRUCTURES, SERVICE PITS, KERBS JOINTS AND CROSSINGS, ELSEWHERE AT 6m CENTRES (UNLESS OTHERWISE SPECIFIED OR DIRECTED)
  2. WEAKEND PLANE JOINTS (WJ) TO BE 3mm WIDE AND TO  $\frac{1}{4}$  OF DEPTH OF PAVING. SPACING OF WJ'S IS TO APPROXIMATE THE WIDTH OF PATH.
  3. CONSTRUCTION JOINTS (CJ) TO BE PROVIDED AGAINST EXISTING CONCRETE CONSTRUCTION EXCEPT WHERE EJ IS SPECIFIED.
  4. AVOID JOINT PATTERNS THAT RESULT IN ACUTE ANGLED SECTIONS,
  5. ALL PAVING TO BE CURED CONTINUOUSLY FOR 3 DAYS.

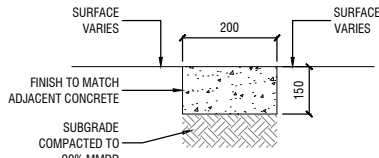
CP-1 & CP-2: CONCRETE PAVING

N.T.S. SECTION



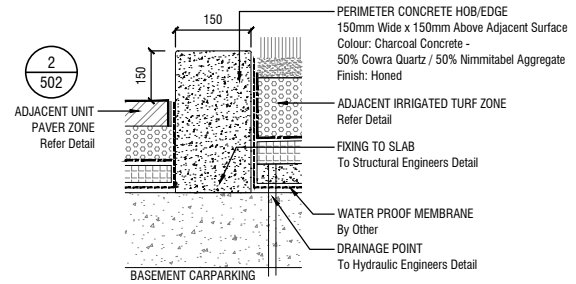
DECORATIVE PEBBLE TYPE 1 - (OVER PODIUM)

N.T.S. SECTION



CONCRETE EDGE / MOWING STRIP

N.T.S. SECTION

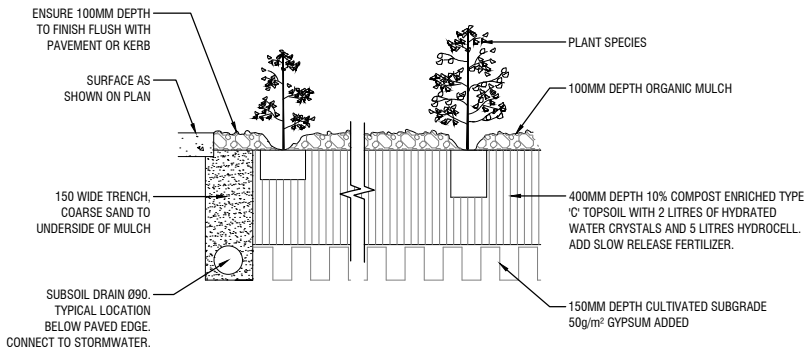


RAISED CONCRETE EDGE / HOB

N.T.S. SECTION

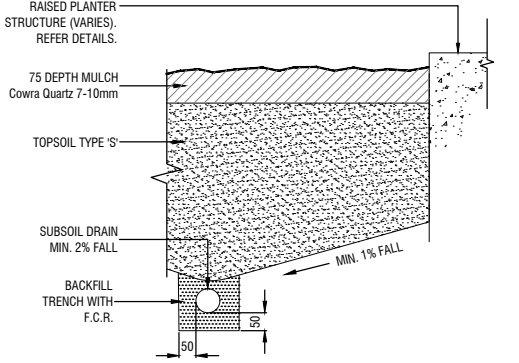
D	AB	AB	MR	18/04/2018	ISSUE FOR WORKS APPROVAL	<p>NOTES</p> <p>DRAWINGS TO BE READ IN CONJUNCTION WITH THE SPECIFICATION.</p> <p>DIMENSIONS ARE IN MILLIMETRES, UNLESS NOTED OTHERWISE.</p> <p>USE FIGURED DIMENSIONS - DO NOT SCALE FROM DRAWING.</p> <p>CONTRACTOR MUST VERIFY ALL DIMENSIONS AND EXISTING LEVELS ON SITE PRIOR TO COMMENCEMENT OF WORK OR MAKING ANY SHOP DRAWINGS. ANY DISCREPANCIES TO BE REFERRED TO THE SUPERINTENDENT.</p> <p>PROVIDE SAMPLES OF ANY SPECIFIED OR PREFERRED MATERIALS OR FINISHES (E.G.BRICKS, PAVERS) FOR SUPERINTENDENTS APPROVAL PRIOR TO PLACING ORDERS.</p>
B	AB	AB	MR	28/03/2018	DRAFT FOR COORDINATION / PROGRESS REVIEW	
A	AB	AB	MR	16/03/2018	ISSUED FOR WORKS APPROVAL	
NO.	DESIGN	DRAWN	CHECKED	VER'D	DATE	
						<div><div><div><div><div></div><div></div></div><div>collins caddaye architects</div></div><div><div><div></div><div></div></div><div>ADDVAL</div></div><div><div><div></div><div></div></div><div>37 CANBERRA AVENUE FOREST ACT 2603 T: 02 6295 1433 F: 02 6295 3192</div></div><div><div><div></div><div></div></div><div>dsb Landscape Architects</div></div><div><div><div></div><div></div></div><div>Deakin Chambers 14 Hannah Place Deakin ACT 2600 Tel 02 6285 1955 dsb@dsbla.com.au</div></div></div><div><div><div>Project</div><div>Multi-Unit Development Block 13 Section 13 FORREST, ACT</div></div><div><div>Client</div><div>ADDVAL Developments</div></div></div><div><div><div>Drawing Title</div><div>LANDSCAPE DETAILS HARDSCAPE</div></div><div><div>Scale</div><div>Drg. No. 3445C-F502 C</div></div><div><div>Plot Date:</div><div>Sheet No. 2/2</div></div></div></div>





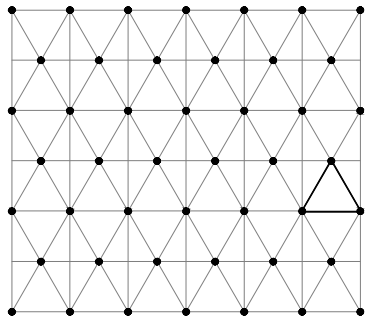
PB-1: EXCAVATED PLANTING BED

N.T.S. SECTION



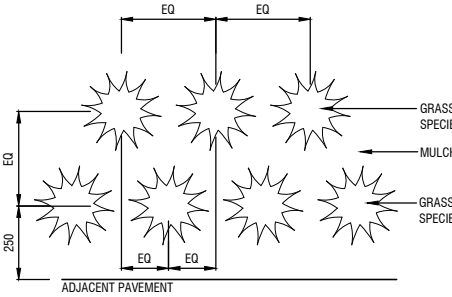
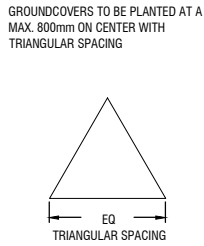
PB-2: RAISED PLANTING BED (INFILL)

N.T.S. SECTION



GROUNDCOVER TRIANGULAR PLANTING

N.T.S. PLAN



SHRUB/GRASS SPECIES PLANTING

N.T.S. PLAN

CARRY OUT GRASSING WHERE SHOWN ON PLANS IN ACCORDANCE WITH ACT GOVERNMENT 'SPECIFICATION FOR URBAN INFRASTRUCTURE WORKS' (ISSUE 1 REVISION 0, 2002)

USE SEED MIXTURES AS FOLLOWS.

SEED MIXTURE FOR NON IRRIGATED GRASS

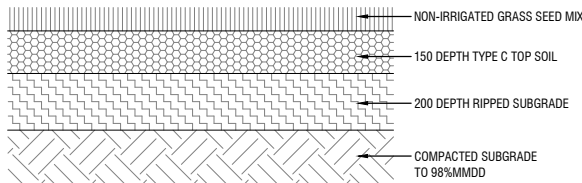
MIX A. 'DWARF' TYPE TALL FESCUE SUMMER DRYLAND GRASS MIXTURE (SOWING PERIOD FROM SEPT TO FEB)

	PERCENT BY WEIGHT	SOWING RATE KG/HA
'DWARF' TYPE TALL FESCUE	55	155
FINE LEAF PERENNIAL RYEGRASS	15	40
CREeping RED FESCUE	15	40
WHITE CLOVER	5	15
COUCHGRASS (HULLED)	10	30
TOTAL		280

MIX B. 'DWARF' TYPE TALL FESCUE WINTER DRYLAND GRASS MIXTURE (SOWING PERIOD FROM MAR TO AUG)

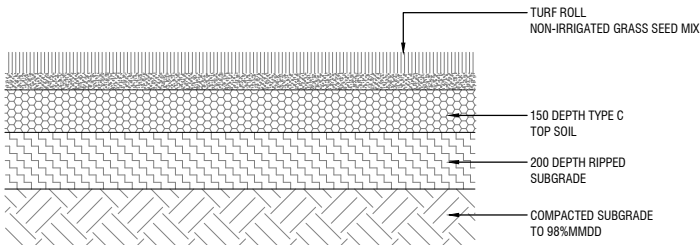
	PERCENT BY WEIGHT	SOWING RATE KG/HA
'DWARF' TYPE TALL FESCUE	62	155
FINE LEAF PERENNIAL RYEGRASS	16	40
CREeping RED FESCUE	16	40
WHITE CLOVER	6	15
TOTAL		250

GR-1: NON-IRRIGATED GRASSING NOTES



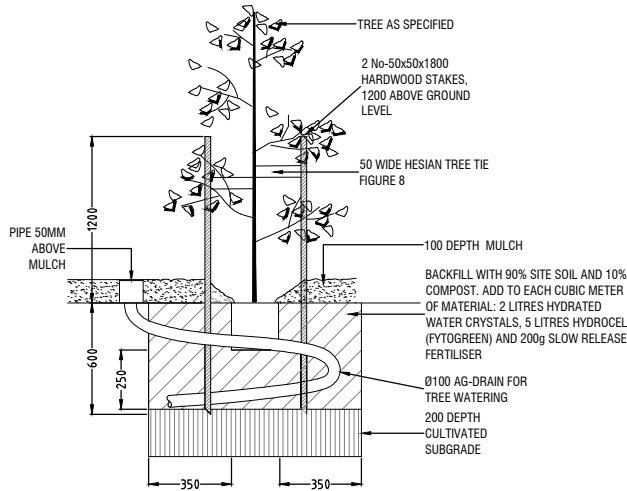
GR-1: NON-IRRIGATED GRASSING

N.T.S. SECTION



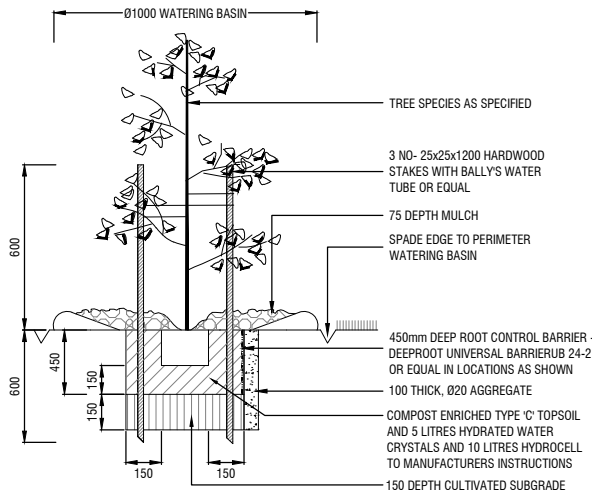
GR-1 & GR-2: GRASSING

N.T.S. SECTION



TREE PLANTING IN EXCAVATED PLANTING BED

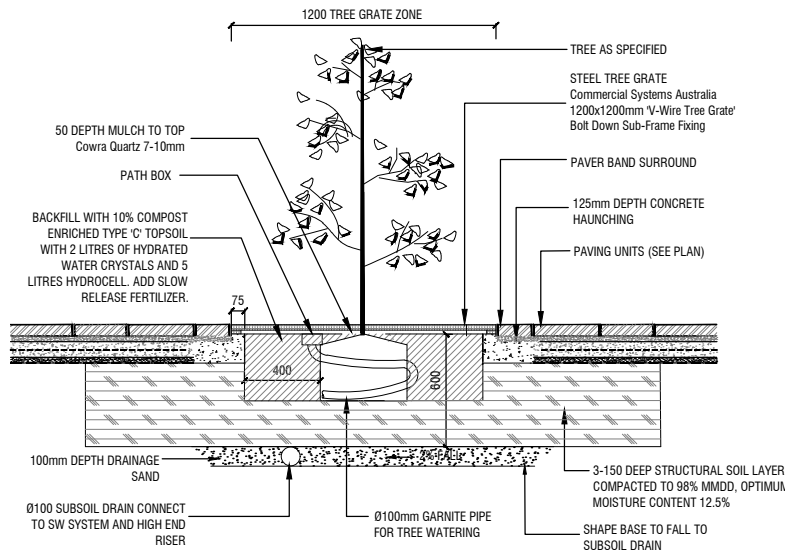
N.T.S. SECTION



NOTE: 'HYDROCELL' AVAILABLE FROM FYTOGREEN  
www.fytogreen.com.au



TREE PLANTING NON-IRRIGATED GRASS AREAS

N.T.S. SECTION

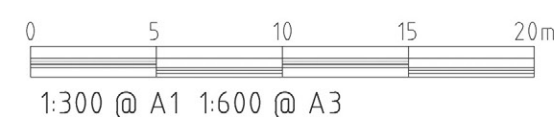
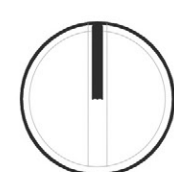


TP-1: TREE PIT

N.T.S. SECTION

C	AB	AB	MR	🦏	18/04/2018	ISSUE FOR WORKS APPROVAL	<div>NOTES</div> <div>DRAWINGS TO BE READ IN CONJUNCTION WITH THE SPECIFICATION.</div> <div>DIMENSIONS ARE IN MILLIMETRES, UNLESS NOTED OTHERWISE.</div> <div>USE FIGURED DIMENSIONS - DO NOT SCALE FROM DRAWING.</div> <div>CONTRACTOR MUST VERIFY ALL DIMENSIONS AND EXISTING LEVELS ON SITE PRIOR TO COMMENCEMENT OF WORK OR MAKING ANY SHOP DRAWINGS. ANY DISCREPANCIES TO BE REFERRED TO THE SUPERINTENDENT.</div> <div>PROVIDE SAMPLES OF ANY SPECIFIED OR PREFERRED MATERIALS OR FINISHES (E.G. BRICKS, PAVERS) FOR SUPERINTENDENTS APPROVAL PRIOR TO PLACING ORDERS.</div>	<div></div> <div><div>collins caddaye</div><div>architects</div></div> <div></div> <div>37 CANBERRA AVENUE FORREST ACT 2603 T: 02 6295 1433 F: 02 6295 3192</div> <div>Deakin Chambers 14 Hannah Place Deakin ACT 2600 Tel 02 6285 1955 dsb@dsbla.com.au</div>	<div>Project</div> <div>Multi-Unit Development Block 13 Section 13 FORREST, ACT</div> <div>Client</div> <div>ADDVAL Developments</div>	<div>Drawing Title</div> <div>LANDSCAPE DETAILS SOFTSCAPE</div>		
B	AB	AB	MR	🦏	28/03/2018	DRAFT FOR COORDINATION / PROGRESS REVIEW				<div>Scale</div> <div>Drg. No.</div> <div>3445C-F501 C</div>	<div>Plot Date:</div>	<div>Sheet No.</div> <div>1/2</div>
A	AB	AB	MR	🦏	16/03/2018	ISSUED FOR WORKS APPROVAL						
NO.	DESIGN	DRAWN	CHECKED	VER'D	DATE	AMENDMENT / ISSUE						











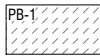

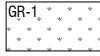
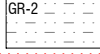
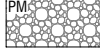
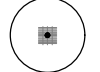




LEGEND - SURFACE FINISHES

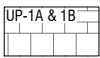
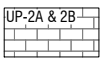
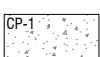

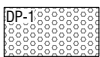
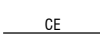

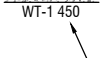
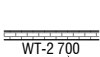

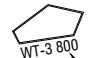



SOFTSCAPE

Refer Detail Sheet F501 - Landscape Details - Softscape

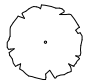
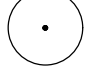




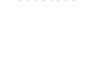
	PLANTING BED TYPE 1 - EXCAVATED PLANTING BED WITH ORGANIC MULCH
	PLANTING BED TYPE 2 - RAISED PLANTING BED WITH DECORATIVE PEBBLE MULCH
	GRASS TYPE 1 - NON IRRIGATED GRASS Refer to Grassing Notes
	GRASS TYPE 2 - IRRIGATED GRASS Refer to Grassing Notes
	PEBBLE MULCH - GARDEN MAINTENANCE PATH Varying Size River Pebble
	TP-1: TREE PIT Tree Planting In Tree Pit With Steel Tree Grate Refer Detail

HARDSCAPE

Refer Detail Sheet F502 Landscape Details - Hardscape

	UNIT PAVEMENT TYPE 1 - 600x600mm & 600x300mm OVER NATURAL GROUND (UP-1A) OVER PODIUM (UP-1B) Colour: Mid-Grey
	UNIT PAVEMENT TYPE 2 - 600x300x40mm OVER NATURAL GROUND (UP-2A) OVER PODIUM (UP-2B) Colour: Light-Grey
	CONCRETE PAVEMENT TYPE 1 Colour: Light Grey Finish: Broom Or Cove Finish
	CONCRETE PAVEMENT TYPE 2 Colour: Light Grey / Off-White Finish: Honed Finish - 50% Cowra Quartz 50% Nimitabel Aggregate
	DECORATIVE PEBBLE TYPE 1 - OVER EXPOSED PODIUM 7-10mm Cowra Quartz Decorative Pebble Steel Edging To Perimeter
	CONCRETE EDGING 150 Wide, Colour To Match Adjacent Pavement
	WALL TYPE 1: FREE-STANDING & RETAINING WALL Finish: Concrete Colour: Dark Grey or Light Grey Refer Detail.
	WALL TYPE 2: RAISED PLANTER WALL Brick / Block / Rendered Refer Detail.
	WALL TYPE 3: STEEL FEATURE BLADES Steel Blade Walls 800/1200 High Colour: Powder Coated Charcoal. Refer Detail.
	FE-1: COURTYARD WALL 1500 High Rendered/Painted Refer Detail
	FE-2: VERTICAL BLADE ALUMINIUM FENCE Refer Detail
	OUTDOOR PICNIC SETTING
	PLANTER TYPE 1 - TROUGH PLANTER GRC Planter - 400 High, 400 Wide (Lengths Vary) Planted With Climbing Plant Trained Up Backing Wall
	CONCRETE PLINTH SEATING Equal To Quatro Design 'Pebble Seats' www.quatrodesign.com.au

LEGEND - PLANTING

	EXISTING TREES TO BE RETAINED & PROTECTED
	NEW TREE PLANTING LOCATIONS
	SHRUB SPECIES - LARGE - MIX NATIVE & EXOTIC (> 1.0m)
	SHRUB SPECIES - MEDIUM - MIX NATIVE & EXOTIC (< 1.0m)
	GRASS / STRAPPY SPECIES - LARGE - MIX NATIVE & EXOTIC (> 0.7m)
	GRASS / STRAPPY SPECIES -SMALL/MEDIUM - MIX NATIVE & EXOTIC (< 0.7m)
	GROUND COVER SPECIES - MIX NATIVE & EXOTIC

SPECIES LEGEND

CODE	BOTANICAL NAME	COMMON NAME	MIN. SIZE	MATURE SIZE Height / Width
<b>TREE SPECIES</b>				
ACp	<i>Acer Palmatum</i>	Japanese Maple	100L	4.0m / 4.0m
ACo	<i>Acer rubrum</i> 'October Glory'	October Glory Red Maple	100L	12.0m / 9.0m
BTu	<i>Betula pendula</i>	Silver Birch	100L	9.0m / 3.0m
BRp	<i>Brachychiton populneus</i>	Kurrajong	100L	10.0m / 5.0m
CTI	<i>Citrus x latifolia</i> 'Tahitian Lime'	Tahitian Lime	1m Trunk	4.0m / 3.0m
CTm	<i>Citrus x meyeri</i> 'Meyer Lemon'	Meyer Lemon	1m Trunk	3.0m / 2.0m
Emf	<i>Eucalyptus mannifera</i>	Brittle Gum	100L	15.0 / 10.0m
ELp	<i>Eucalyptus pauciflora</i> 'Little Snowman'	Snow Gum	100L	6.0m / 4.0m
JPv	<i>Juniperus virginiana</i> 'Skyrocket'	'Skyrocket' Eastern Redcedar	1.5m	4.0m / 0.7m
LAi	<i>Lagerstroemia indica</i> x <i>L. Fauriei</i> 'Biloxi'	Crepe Myrtle	100L	8.0m / 4.0m
LQs	<i>Liquidambar styraciflua</i> 'Slender Silhouette'	Sweetgum	100L	2.0m / 10.0m
Pcn	<i>Prunus cerasifera</i> 'Nigra'	Purple Leaf Cherry Plum	100L	4.0m / 4.0m
PYc	<i>Pyrus calleryana</i> 'Capita'	Callery Pear	100L	7.0m / 2.0m
PYt	<i>Pyrus calleryana</i> 'Fronzani' - Frontier	Callery Pear	100L	10.0m / 4.0m
QUp	<i>Quercus palustris</i>	Pin Oak	100L	15.0m / 10.0m
QUpP	<i>Quercus palustris</i> 'Pringreen'-Green Pillar	Pin Oak	100L	10.0m / 4.0m

Trees shall be grown, containerised and supplied in accordance with  
NATSPEC Guide No.2 - Purchasing Landscape Trees - A Guide to Assessing Tree Quality

SHRUB SPECIES - LARGE - MIX NATIVE & EXOTIC (> 1.0m)

CAMs	<i>Camellia sasanqua</i>	Sasanqua Camellia	300mm	3.0m / 1.5m
CRA	<i>Correa Alba</i>	White Correa	200mm	1.0m / 2.0 m
ESI	<i>Escallonia lveyi</i>	Escallonia lveyi	200mm	3.0m / 3.0m
GRh	<i>Grevillea 'Hills Jubilee'</i>	Grevillea 'Hills Jubilee'	200mm	1.5m / 1.0mm
GAf	<i>Gardenia augusta</i> 'Florida'	Fragrant Gardenia	200mm	1.0m / 2.0m
LOm	<i>Leptospermum morrisonii</i> 'Burgundy'	Burgundy Tea Tree	200mm	3.0m / 1.5m
MGG	<i>Magnolia grandiflora</i> 'Little Gem'	Southern Magnolia	200mm	5.0m / 2.0m
HBI	<i>Hebe speciosa</i> x <i>diosmifolia</i> 'Inspiration'	Hebe 'Inspiration'	200mm	1.0m / 2.0m
VBo	<i>Viburnum odoratissimum</i> 'Dense Fence'	Sweet Viburnum	200mm	3.0m / 2.0m

SHRUB SPECIES - MEDIUM - MIX NATIVE & EXOTIC (< 1.0m)

CLv	<i>Callistemon viminalis</i> 'Better John'	Bottlebrush Callistemon	140mm	0.8m / 0.9m
CRe	<i>Correa 'Andorabell'</i>	Correa 'Andorabell'	140mm	1.0 / 1.0m
CNe	<i>Convolvulus cneorum</i>	Silver Bush	140mm	0.4m / 0.4m
ESp	<i>Escallonia 'Pink Pixie'</i>	Pink Pixie	140mm	0.8m / 0.8m
EUp	<i>Euphorbia amygdaloides</i> var. <i>robbiae</i>	Mrs Robbs Bonnet	140mm	0.3m / 0.7m
GRf	<i>Grevillea 'Firecracker'</i>	Grevillea Firecracker	140mm	0.5m / 0.8m
HBe	<i>Hebe 'Emerald Green'</i>	Emerald Green Hebe	140mm	0.4m / 0.5m
HEr	<i>Heuchera sanguinea</i> 'Rave On'	Coral Bells	140mm	0.4m / 0.3m
HLp	<i>Helichrysum petiolare</i>	Licorice Plant	140mm	0.6m / 1.2m
LVM	<i>Lavandula 'Munstead'</i>	Dwarf Lavender	140mm	0.6m / 0.7m
RHi	<i>Rhaphiolepis indica</i> 'Cosmic Pink'	Indian Hawthorn	140mm	0.7m / 0.7m
WEb	<i>Westringia 'Blue Gem'</i>	Coastal Rosemary	140mm	1.0m / 0.8m
WEg	<i>Westringia 'Grey Box'</i>	Coastal Rosemary	140mm	0.5m / 0.5m

GRASS / STRAPPY SPECIES - LARGE - MIX NATIVE & EXOTIC (> 0.7m)

DLT	<i>Dianella tasmanica</i>	Tasman Flax Lily	140mm	1.0m / 1.0m
BLp	<i>Baloskion pallens</i>	Didgery Sticks	140mm	1.0m / 1.0m
DTg	<i>Dietes grandiflora</i> 'Grand Star'	Dietes	140mm	0.9m / 1.5m
Fin	<i>Ficinia nodosa</i>	Knobby Club Rush	140mm	1.0m / 0.8m
LDlp	<i>Lomandra 'Little Pal'</i>	Lomandra 'Little Pal'	140mm	0.8m / 0.5m

GRASS / STRAPPY SPECIES - SMALL/MEDIUM - MIX NATIVE & EXOTIC (< 0.7m)


DTI	<i>Dietes iridioides</i>	Dietes	140mm	0.7m / 0.6m
DLa	<i>Dianella Aranda'</i>	Flax Lily	140mm	0.3m / 0.35m
DLCb	<i>Dianella 'Cassa Blue'</i>	Flax Lily	140mm	0.5m / 0.4m
DLIr	<i>Dianella 'Little Rev'</i>	Flax Lily	140mm	0.4m / 0.4m
FEg	<i>Festuca glauca</i>	Blue Fescue	140mm	0.3m / 0.3m
LDic	<i>Lomandra 'Little Con'</i>	Lomandra 'Little Con'	140mm	0.3m / 0.3m
LPm	<i>Liriope muscari</i> 'Evergreen Giant'	Liriope 'Evergreen Giant'	140mm	0.6m / 0.6m
LPa	<i>Liriope muscari</i> 'Amethyst'	Lilyturf	140mm	0.4m / 0.4m
LPS	<i>Liriope 'Samantha'</i>	Lilyturf	140mm	0.5m / 0.5m
OPp	<i>Ophiopogon planiscapus</i> 'Nigrescens'	Black Mondo Grass	140mm	0.25m / 0.25m


GROUND COVER SPECIES

AJr	<i>Ajuga reptans</i>	Common Bugle	140mm	0.2m / 0.4m
CMT	<i>Cerastium tomentosum</i>	Snow in Summer	140mm	0.2m / 0.6m
CVs	<i>Convolvulus sabatius</i>	Ground Morning Glory	140mm	0.15m / 0.6m
CRp	<i>Correa alba prostrate</i> 'Silver Star'	White Correa (Prostrate)	140mm	0.2m / 0.6m
CRr	<i>Correa reflexa</i> 'Trixielle'	Correa (Prostrate)	140mm	0.5m / 1.5m
DCs	<i>Dichondra argentea</i> 'Silver Falls'	Dichondra	140mm	0.15m / 0.8m
GAo	<i>Gardenia augusta</i> 'O So Fine'	O So Fine Gardenia	140mm	0.3m / 1.0m
Ggc	<i>Grevillea juniperina</i> 'Gold Cluster'	Gold Cluster Grevillea	140mm	0.3m / 1.0m
HAv	<i>Hardenbergia violacea</i> 'Mini Haha'	False Sarsaparilla	140mm	0.4m / 1.0m
MYp	<i>Myoporum parvifolium</i> 'Yareena'	Creeping boobialla	140mm	0.1m / 1.0 m
MYpP	<i>Myoporum parvifolium</i> 'Purpurea'	Creeping boobialla	140mm	0.1m / 1.5m
PXs	<i>Phlox subulata</i>	Moss phlox	140mm	0.2m / 1.0m
SCm	<i>Scaevola albid</i> 'Mauve Clusters'	Fan Flower	140mm	0.1m / 1.0m
THs	<i>Thymus serpyllum</i>	Creeping Thyme	140mm	0.1m / 0.8m
TRa	<i>Trachelospermum asiaticum</i> 'Shooting Star'	Asiatic Jasmine	140mm	0.3m / 1.5m
Wlh	<i>Westringia fruticosa</i> 'Low Horizon'	Coastal Rosemary	140mm	0.3m / 0.7m
WEm	<i>Westringia fruticosa</i> 'Mund'	Coastal Rosemary	140mm	0.5m / 1.5m
VOH	<i>Viola hederacea</i>	Native Violet	140mm	0.2m / 0.4m

CLIMBER SPECIES

CLm	<i>Clematis montana</i> 'Rubens'	Pink Anemone Clematis	140mm	0.1m / 6.0m
PNJ	<i>Pandorea jasminoides</i> 'Bower of Beauty'	Bower of Beauty	140mm	0.5m / 4.0m
TRJ	<i>Trachelospermum jasminoides</i>	Star Jasmine	140mm	0.5m / 3.0m

G F E D C B A A	AB	AB	MR		04/06/2018	ISSUE FOR WORKS APPROVAL	<p>NOTES</p> <p>DRAWINGS TO BE READ IN CONJUNCTION WITH THE SPECIFICATION.</p> <p>DIMENSIONS ARE IN MILLIMETRES, UNLESS NOTED OTHERWISE.</p> <p>USE FIGURED DIMENSIONS - DO NOT SCALE FROM DRAWING.</p> <p>CONTRACTOR MUST VERIFY ALL DIMENSIONS AND EXISTING LEVELS ON SITE PRIOR TO COMMENCEMENT OF WORK OR MAKING ANY SHOP DRAWINGS. ANY DISCREPANCIES TO BE REFERRED TO THE SUPERINTENDENT.</p> <p>PROVIDE SAMPLES OF ANY SPECIFIED OR PREFERRED MATERIALS OR FINISHES (E.G. BRICKS, PAVERS) FOR SUPERINTENDENTS APPROVAL PRIOR TO PLACING ORDERS.</p>
	AB	AB	MR		14/05/2018	ISSUE FOR WORKS APPROVAL	
	AB	AB	MR		18/04/2018	ISSUE FOR WORKS APPROVAL	
	AB	AB	MR		10/04/2018	DRAFT FOR COORDINATION / PROGRESS REVIEW	
	AB	AB	MR		28/03/2018	DRAFT FOR COORDINATION / PROGRESS REVIEW	
	AB	AB	MR		20/03/2018	DRAFT FOR INFORMATION	
NO.	DESIGN	DRAWN	CHECKED	VER'D	DATE	AMENDMENT / ISSUE	



collins caddaye


architects

37 CANBERRA AVENUE

FOREST ACT 2603

T: 02 6295 1433

F: 02 6295 3192



Deakin Chambers  
14 Hannah Place  
Deakin ACT 2600  
Tel 02 6285 1955  
dsb@dsbla.com.au

Project

Multi-Unit Development  
Block 13 Section 13  
FORREST, ACT

Client

ADDVAL Developments

Drawing Title

LEGENDS AND SPECIES LIST

Scale

Plot Date:

Sheet No.

Drg. No.

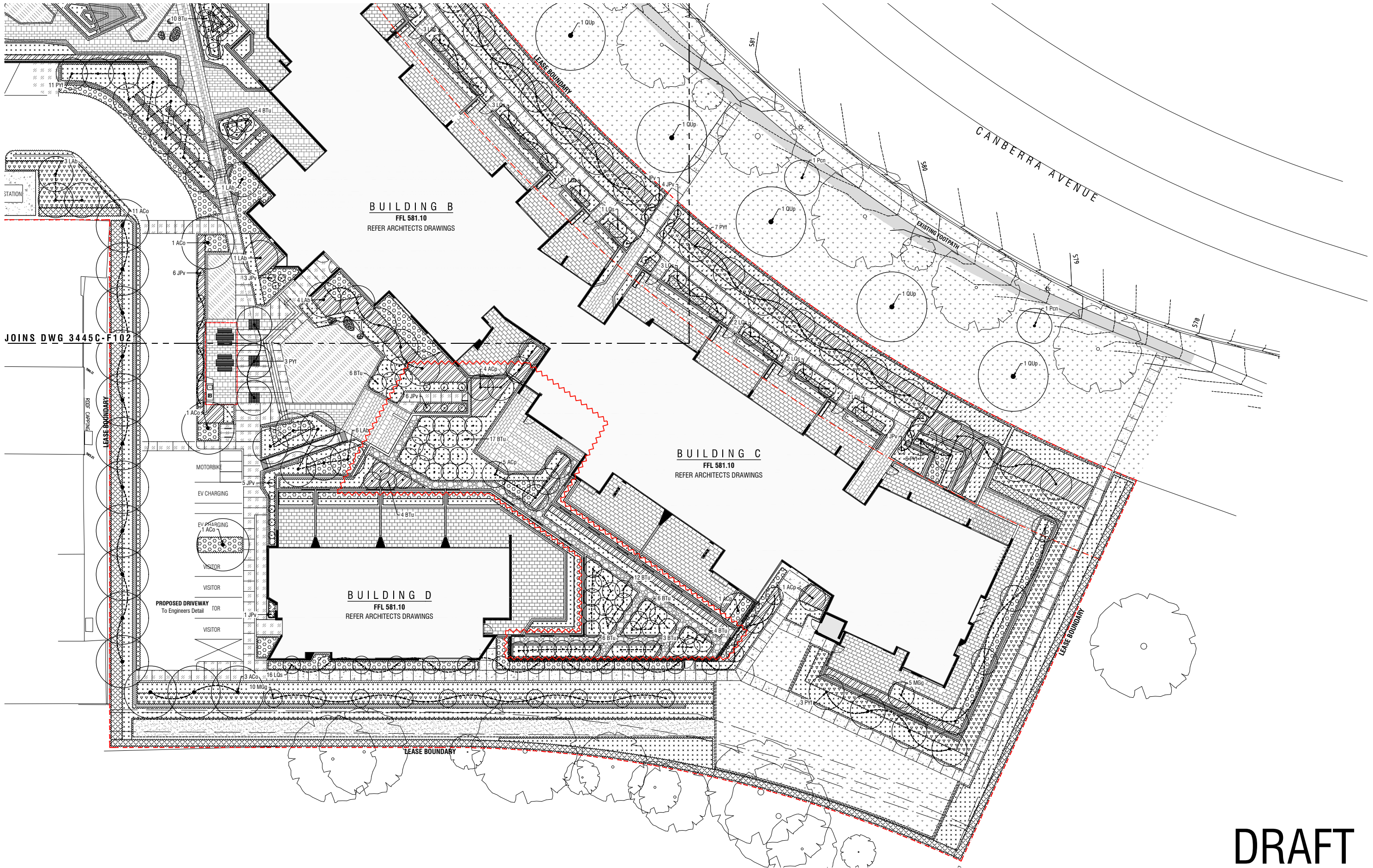
3445C-F102 G

2/2





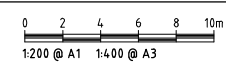




DRAFT

F	AB	AB	MR	1	04/06/2018	ISSUE FOR WORKS APPROVAL
E	AB	AB	MR	2	14/05/2018	ISSUE FOR WORKS APPROVAL
D	AB	AB	MR	3	18/04/2018	ISSUE FOR WORKS APPROVAL
C	AB	AB	MR	4	10/04/2018	DRAFT FOR COORDINATION / PROGRESS REVIEW
B	AB	AB	MR	5	28/03/2018	DRAFT FOR COORDINATION / PROGRESS REVIEW
A	AB	AB	MR	6	20/03/2018	DRAFT FOR INFORMATION
NO.	DESIGN	DRAWN	CHECKED	VER'D	DATE	AMENDMENT / ISSUE

NOTES  
DRAWINGS TO BE READ IN CONJUNCTION WITH THE SPECIFICATION.  
DIMENSIONS ARE IN MILLIMETRES, UNLESS NOTED OTHERWISE.  
USE FIGURED DIMENSIONS - DO NOT SCALE FROM DRAWING.  
CONTRACTOR MUST VERIFY ALL DIMENSIONS AND EXISTING LEVELS ON SITE PRIOR TO COMMENCEMENT OF WORK OR MAKING ANY SHOP DRAWINGS. ANY DISCREPANCIES TO BE REFERRED TO THE SUPERINTENDENT.  
PROVIDE SAMPLES OF ANY SPECIFIED OR PREFERRED MATERIALS OR FINISHES (SUSBRICKS, PAVERS) FOR SUPERINTENDENTS APPROVAL PRIOR TO PLACING ORDERS.

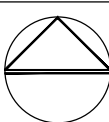


collins caddaye  
architects

37 CANBERRA AVENUE  
FOREST ACT 2603  
T: 02 6295 1433  
F: 02 6295 3192



Deakin Chambers  
14 Hannah Place  
Deakin ACT 2600  
Tel 02 6285 1955  
dsb@dsbla.com.au



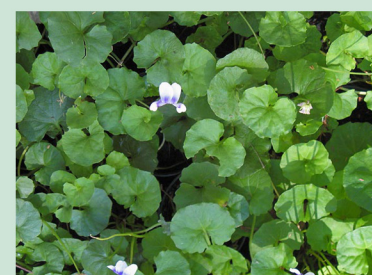
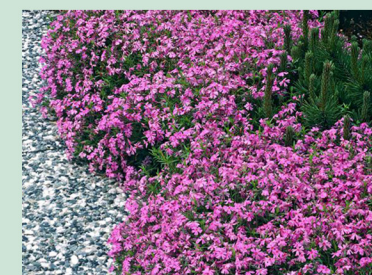
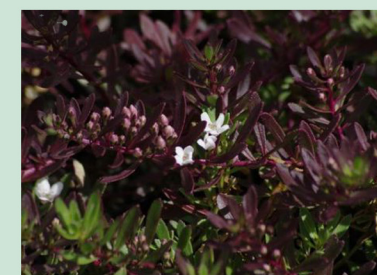
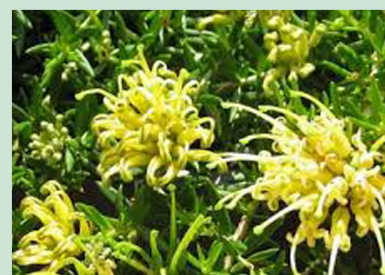
Project  
Multi-Unit Development  
Block 13 Section 13  
FOREST, ACT  
Client  
ADDVAL Developments

Drawing Title  
PLANTING PLAN  
AREA 2

Scale  
Drg. No.  
3445C-F302 F

Plot Date:  
Sheet No.  
2/2





## GROUNDCOVER SPECIES

[illegible]





Callistemon viminalis 'Better John'



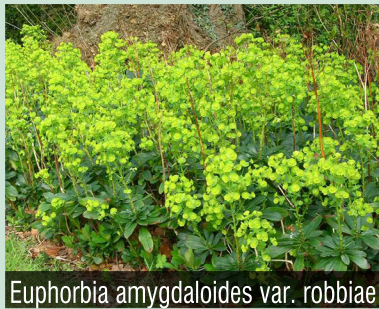
Convolvulus cneorum



Correa 'Andorabell'



Escallonia 'Pink Pixie'



Euphorbia amygdaloides var. robbiae



Grevillea 'Firecracker'



Hebe 'Emerald Green'



Helichrysum petiolare



Heuchera sanguinea 'Rave On'



Lavandula 'Munstead'



Raphiolepis indica 'Cosmic Pink'



Westringia 'Blue Gem'



Westringia 'Grey Box'

**SHRUB SPECIES - MEDIUM**  
MIX NATIVE & EXOTIC (<1.0m)



Baloskion pallens



Dianella tasmanica



Dietes grandiflora 'Grand Star'



Ficinia nodosa



Lomandra 'Little Pal'

**GRASS / STRAPPY SP.**  
LARGE  
MIX NATIVE & EXOTIC (>0.7m)

																																																																																																																																																																																																																																																																																																																																																																																																																																																																																																																																																																																																																																																																																																																																																																																																																																																																																																																																																																																																																																																																																																																																																																																																																																																																																																																																																																																																																																		</
--	--	--	--	--	--	--	--	--	--	--	--	--	--	--	--	--	--	--	--	--	--	--	--	--	--	--	--	--	--	--	--	--	--	--	--	--	--	--	--	--	--	--	--	--	--	--	--	--	--	--	--	--	--	--	--	--	--	--	--	--	--	--	--	--	--	--	--	--	--	--	--	--	--	--	--	--	--	--	--	--	--	--	--	--	--	--	--	--	--	--	--	--	--	--	--	--	--	--	--	--	--	--	--	--	--	--	--	--	--	--	--	--	--	--	--	--	--	--	--	--	--	--	--	--	--	--	--	--	--	--	--	--	--	--	--	--	--	--	--	--	--	--	--	--	--	--	--	--	--	--	--	--	--	--	--	--	--	--	--	--	--	--	--	--	--	--	--	--	--	--	--	--	--	--	--	--	--	--	--	--	--	--	--	--	--	--	--	--	--	--	--	--	--	--	--	--	--	--	--	--	--	--	--	--	--	--	--	--	--	--	--	--	--	--	--	--	--	--	--	--	--	--	--	--	--	--	--	--	--	--	--	--	--	--	--	--	--	--	--	--	--	--	--	--	--	--	--	--	--	--	--	--	--	--	--	--	--	--	--	--	--	--	--	--	--	--	--	--	--	--	--	--	--	--	--	--	--	--	--	--	--	--	--	--	--	--	--	--	--	--	--	--	--	--	--	--	--	--	--	--	--	--	--	--	--	--	--	--	--	--	--	--	--	--	--	--	--	--	--	--	--	--	--	--	--	--	--	--	--	--	--	--	--	--	--	--	--	--	--	--	--	--	--	--	--	--	--	--	--	--	--	--	--	--	--	--	--	--	--	--	--	--	--	--	--	--	--	--	--	--	--	--	--	--	--	--	--	--	--	--	--	--	--	--	--	--	--	--	--	--	--	--	--	--	--	--	--	--	--	--	--	--	--	--	--	--	--	--	--	--	--	--	--	--	--	--	--	--	--	--	--	--	--	--	--	--	--	--	--	--	--	--	--	--	--	--	--	--	--	--	--	--	--	--	--	--	--	--	--	--	--	--	--	--	--	--	--	--	--	--	--	--	--	--	--	--	--	--	--	--	--	--	--	--	--	--	--	--	--	--	--	--	--	--	--	--	--	--	--	--	--	--	--	--	--	--	--	--	--	--	--	--	--	--	--	--	--	--	--	--	--	--	--	--	--	--	--	--	--	--	--	--	--	--	--	--	--	--	--	--	--	--	--	--	--	--	--	--	--	--	--	--	--	--	--	--	--	--	--	--	--	--	--	--	--	--	--	--	--	--	--	--	--	--	--	--	--	--	--	--	--	--	--	--	--	--	--	--	--	--	--	--	--	--	--	--	--	--	--	--	--	--	--	--	--	--	--	--	--	--	--	--	--	--	--	--	--	--	--	--	--	--	--	--	--	--	--	--	--	--	--	--	--	--	--	--	--	--	--	--	--	--	--	--	--	--	--	--	--	--	--	--	--	--	--	--	--	--	--	--	--	--	--	--	--	--	--	--	--	--	--	--	--	--	--	--	--	--	--	--	--	--	--	--	--	--	--	--	--	--	--	--	--	--	--	--	--	--	--	--	--	--	--	--	--	--	--	--	--	--	--	--	--	--	--	--	--	--	--	--	--	--	--	--	--	--	--	--	--	--	--	--	--	--	--	--	--	--	--	--	--	--	--	--	--	--	--	--	--	--	--	--	--	--	--	--	--	--	--	--	--	--	--	--	--	--	--	--	--	--	--	--	--	--	--	--	--	--	--	--	--	--	--	--	--	--	--	--	--	--	--	--	--	--	--	--	--	--	--	--	--	--	--	--	--	--	--	--	--	--	--	--	--	--	--	--	--	--	--	--	--	--	--	--	--	--	--	--	--	--	--	--	--	--	--	--	--	--	--	--	--	--	--	--	--	--	--	--	--	--	--	--	--	--	--	--	--	--	--	--	--	--	--	--	--	--	--	--	--	--	--	--	--	--	--	--	--	--	--	--	--	--	--	--	--	--	--	--	--	--	--	--	--	--	--	--	--	--	--	--	--	--	--	--	--	--	--	--	--	--	--	--	--	--	--	--	--	--	--	--	--	--	--	--	--	--	--	--	--	--	--	--	--	--	--	--	--	--	--	--	--	--	--	--	--	--	--	--	--	--	--	--	--	--	--	--	--	--	--	--	--	--	--	--	--	--	--	--	--	--	--	--	--	--	--	--	--	--	--	--	--	--	--	--	--	--	--	--	--	--	--	--	--	--	--	--	--	--	--	--	--	--	--	--	--	--	--	--	--	--	--	--	--	--	--	--	--	--	--	--	--	--	--	--	--	--	--	--	--	--	--	--	--	--	--	--	--	--	--	--	--	--	--	--	--	--	--	--	--	--	--	--	--	--	--	--	--	--	--	--	--	--	--	--	--	--	--	--	--	--	--	--	--	--	--	--	--	--	--	--	--	--	--	--	--	--	--	--	--	--	--	--	--	--	--	--	--	--	--	--	--	--	--	--	--	--	--	--	--	--	--	--	--	--	--	--	--	--	--	--	--	--	--	--	--	--	--	--	--	--	--	--	--	--	--	--	--	--	--	--	--	--	--	--	--	--	--	--	--	--	--	--	--	--	--	--	--	--	--	--	--	--	--	--	--	--	--	--	--	--	--	--	--	--	--	--	--	--	--	--	--	--	--	--	--	--	--	--	--	--	--	--	--	--	--	--	--	--	--	--	--	--	--	--	--	--	--	--	--	--	--	--	--	--	--	--	--	--	--	--	--	--	--	--	--	--	--	--	--	--	--	--	--	--	--	--	--	--	--	--	--	--	--	--	--	--	--	--	--	--	--	--	--	--	--	--	--	--	--	--	--	--	--	--	--	--	--	--	--	--	--	--	--	--	--	--	--	--	--	--	--	--	--	--	--	--	--	--	--	--	--	--	--	--	--	--	--	--	--	--	--	--	--	--	--	--	--	--	--	--	--	--	--	--	--	--	--	--	--	--	--	--	--	--	--	--	--	--	--	--	--	--	--	--	--	--	--	--	--	--	--	--	--	--	--	--	--	--	--	--	--	--	--	--	--	--	--	--	--	--	--	--	--	--	--	--	--	--	--	--	--	--	--	--	--	--	--	--	--	--	--	--	--	--	--	--	--	----





**SHRUB SPECIES - LARGE**  
MIX NATIVE & EXOTIC (>1.0m)



**GRASS / STRAPPY SP.**  
SMALL/MEDIUM  
MIX NATIVE & EXOTIC (<0.7m)

[illegible]





Acer Palmatum



Acer rubrum 'October Glory'



Betula pendula



Brachychiton populneus



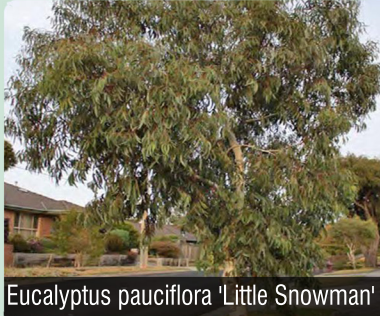
Citrus x latifolia 'Tahitian Lime'



Citrus x meyeri 'Meyer Lemon'



Eucalyptus manniferat



Eucalyptus pauciflora 'Little Snowman'



Juniperus virginiana 'Skyrocket'



Lagerstroemia indica x L. Fauriei 'Biloxi'



Liquidambar styraciflua 'Slender Silhouette'



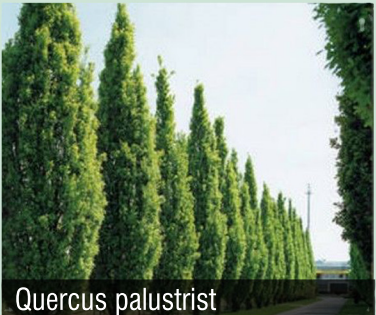
Prunus cerasifera 'Nigra'



Pyrus calleryana 'Capital'



Pyrus calleryana 'Fronzam' - Frontiert



Quercus palustris



Quercus palustris 'Pringreen'-Green Pillar

## TREE SPECIES



Clematis montana 'Rubens'



Pandorea jasminoides 'Bower of Beauty'



Trachelospermum jasminoides

## CLIMBER SPECIES

--	--	--	--	--	--	--	--	--	--	--	--	--	--	--	--	--	--	--	--	--	--	--	--	--	--	--	--	--	--	--	--	--	--	--	--	--	--	--	--	--	--	--	--	--	--	--	--	--	--	--	--	--	--	--	--	--	--	--	--	--	--	--	--	--	--	--	--	--	--	--	--	--	--	--	--	--	--	--	--	--	--	--	--	--	--	--	--	--	--	--	--	--	--	--	--	--	--	--	--	--	--	--	--	--	--	--	--	--	--	--	--	--	--	--	--	--	--	--	--	--	--	--	--	--	--	--	--	--	--	--	--	--	--	--	--	--	--	--	--	--	--	--	--	--	--	--	--	--	--	--	--	--	--	--	--	--	--	--	--	--	--	--	--	--	--	--	--	--	--	--	--	--	--	--	--	--	--	--	--	--	--	--	--	--	--	--	--	--	--	--	--	--	--	--	--	--	--	--	--	--	--	--	--	--	--	--	--	--	--	--	--	--	--	--	--	--	--	--	--	--	--	--	--	--	--	--	--	--	--	--	--	--	--	--	--	--	--	--	--	--	--	--	--	--	--	--	--	--	--	--	--	--	--	--	--	--	--	--	--	--	--	--	--	--	--	--	--	--	--	--	--	--	--	--	--	--	--	--	--	--	--	--	--	--	--	--	--	--	--	--	--	--	--	--	--	--	--	--	--	--	--	--	--	--	--	--	--	--	--	--	--	--	--	--	--	--	--	--	--	--	--	--	--	--	--	--	--	--	--	--	--	--	--	--	--	--	--	--	--	--	--	--	--	--	--	--	--	--	--	--	--	--	--	--	--	--	--	--	--	--	--	--	--	--	--	--	--	--	--	--	--	--	--	--	--	--	--	--	--	--	--	--	--	--	--	--	--	--	--	--	--	--	--	--	--	--	--	--	--	--	--	--	--	--	--	--	--	--	--	--	--	--	--	--	--	--	--	--	--	--	--	--	--	--	--	--	--	--	--	--	--	--	--	--	--	--	--	--	--	--	--	--	--	--	--	--	--	--	--	--	--	--	--	--	--	--	--	--	--	--	--	--	--	--	--	--	--	--	--	--	--	--	--	--	--	--	--	--	--	--	--	--	--	--	--	--	--	--	--	--	--	--	--	--	--	--	--	--	--	--	--	--	--	--	--	--	--	--	--	--	--	--	--	--	--	--	--	--	--	--	--	--	--	--	--	--	--	--	--	--	--	--	--	--	--	--	--	--	--	--	--	--	--	--	--	--	--	--	--	--	--	--	--	--	--	--	--	--	--	--	--	--	--	--	--	--	--	--	--	--	--	--	--	--	--	--	--	--	--	--	--	--	--	--	--	--	--	--	--	--	--	--	--	--	--	--	--	--	--	--	--	--	--	--	--	--	--	--	--	--	--	--	--	--	--	--	--	--	--	--	--	--	--	--	--	--	--	--	--	--	--	--	--	--	--	--	--	--	--	--	--	--	--	--	--	--	--	--	--	--	--	--	--	--	--	--	--	--	--	--	--	--	--	--	--	--	--	--	--	--	--	--	--	--	--	--	--	--	--	--	--	--	--	--	--	--	--	--	--	--	--	--	--	--	--	--	--	--	--	--	--	--	--	--	--	--	--	--	--	--	--	--	--	--	--	--	--	--	--	--	--	--	--	--	--	--	--	--	--	--	--	--	--	--	--	--	--	--	--	--	--	--	--	--	--	--	--	--	--	--	--	--	--	--	--	--	--	--	--	--	--	--	--	--	--	--	--	--	--	--	--	--	--	--	--	--	--	--	--	--	--	--	--	--	--	--	--	--	--	--	--	--	--	--	--	--	--	--	--	--	--	--	--	--	--	--	--	--	--	--	--	--	--	--	--	--	--	--	--	--	--	--	--	--	--	--	--	--	--	--	--	--	--	--	--	--	--	--	--	--	--	--	--	--	--	--	--	--	--	--	--	--	--	--	--	--	--	--	--	--	--	--	--	--	--	--	--	--	--	--	--	--	--	--	--	--	--	--	--	--	--	--	--	--	--	--	--	--	--	--	--	--	--	--	--	--	--	--	--	--	--	--	--	--	--	--	--	--	--	--	--	--	--	--	--	--	--	--	--	--	--	--	--	--	--	--	--	--	--	--	--	--	--	--	--	--	--	--	--	--	--	--	--	--	--	--	--	--	--	--	--	--	--	--	--	--	--	--	--	--	--	--	--	--	--	--	--	--	--	--	--	--	--	--	--	--	--	--	--	--	--	--	--	--	--	--	--	--	--	--	--	--	--	--	--	--	--	--	--	--	--	--	--	--	--	--	--	--	--	--	--	--	--	--	--	--	--	--	--	--	--	--	--	--	--	--	--	--	--	--	--	--	--	--	--	--	--	--	--	--	--	--	--	--	--	--	--	--	--	--	--	--	--	--	--	--	--	--	--	--	--	--	--	--	--	--	--	--	--	--	--	--	--	--	--	--	--	--	--	--	--	--	--	--	--	--	--	--	--	--	--	--	--	--	--	--	--	--	--	--	--	--	--	--	--	--	--	--	--	--	--	--	--	--	--	--	--	--	--	--	--	--	--	--	--	--	--	--	--	--	--	--	--	--	--	--	--	--	--	--	--	--	--	--	--	--	--	--	--	--	--	--	--	--	--	--	--	--	--	--	--	--	--	--	--	--	--	--	--	--	--	--	--	--	--	--	--	--	--	--	--	--	--	--	--	--	--	--	--	--	--	--	--	--	--	--	--	--	--	--	--	--	--	--	--	--	--	--	--	--	--	--	--	--	--	--	--	--	--	--	--	--	--	--	--	--	--	--	--	--	--	--	--	--	--	--	--	--	--	--	--	--	--	--	--	--	--	--	--	--	--	--	--	--	--	--	--	--	--	--	--	--	--	--	--	--	--	--	--	--	--	--	--	--	--	--	--	--	--	--	--	--	--	--	--	--	--	--	--	--	--	--	--	--	--	--	--	--	--	--	--	--	--	--	--	--	--	--	--	--	--	--	--	--	--	--	--	--	--	--	--	--	--	--	--	--	--	--	--	--	--	--	--	--	--	--	--	--	--	--	--	--	--	--	--	--	--	--	--	--	--	--	--	--	--	--	--	--	--	--	--	--	--	--	--	--	--	--	--	--	--	--	--	--	--	--	--	--	--	--	--	--	--	--	--	--	--	--	--	--	--	--	--	--	--	--	--	--	--	--	--	--	--	--	--	--	--	--	--	--	--	--	--	--	--	--	--	--	--	--	--	--	--	--	--	--	--	--	--	--	--	--	--	--	--	--	--	--	--	--	--	--