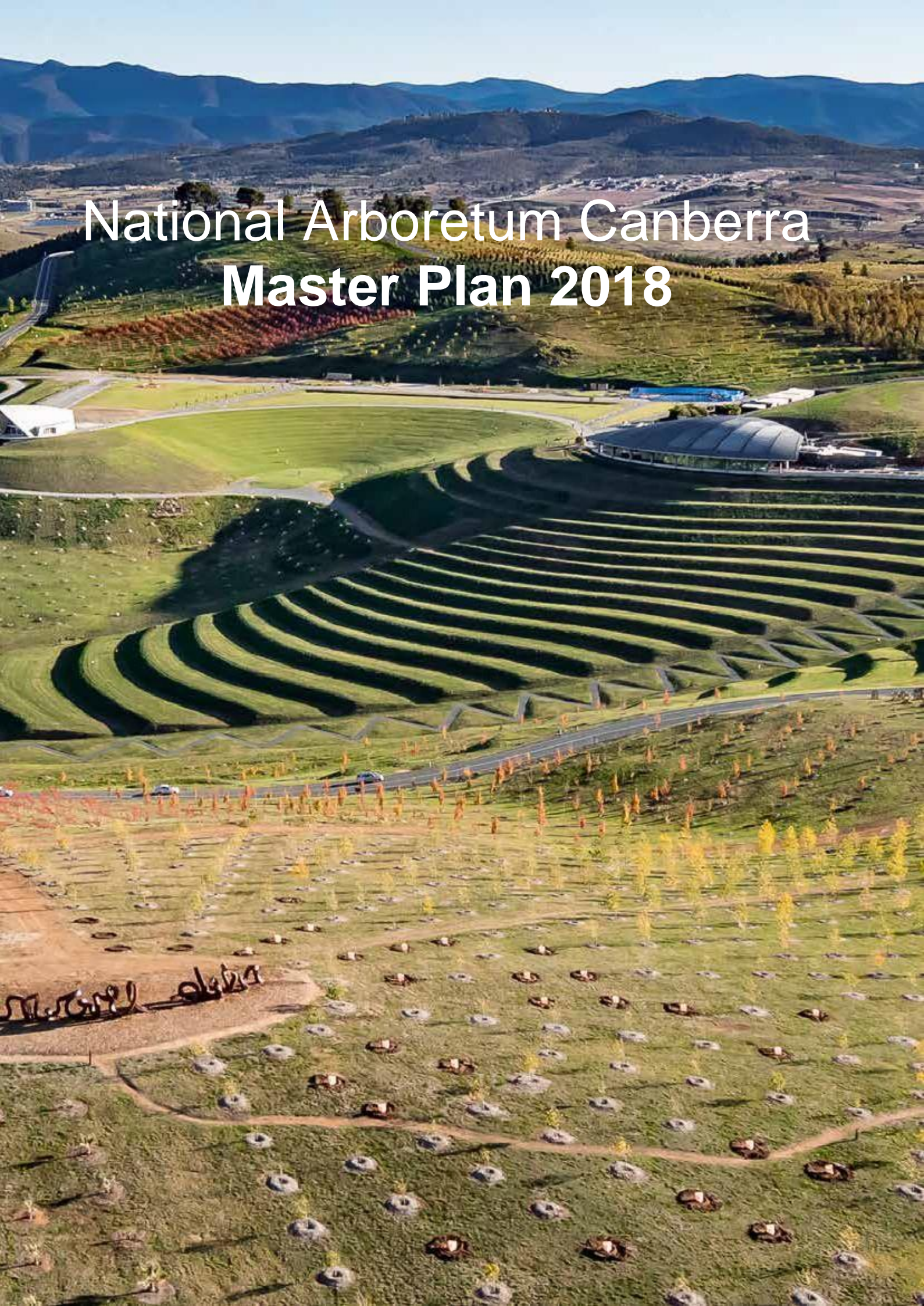
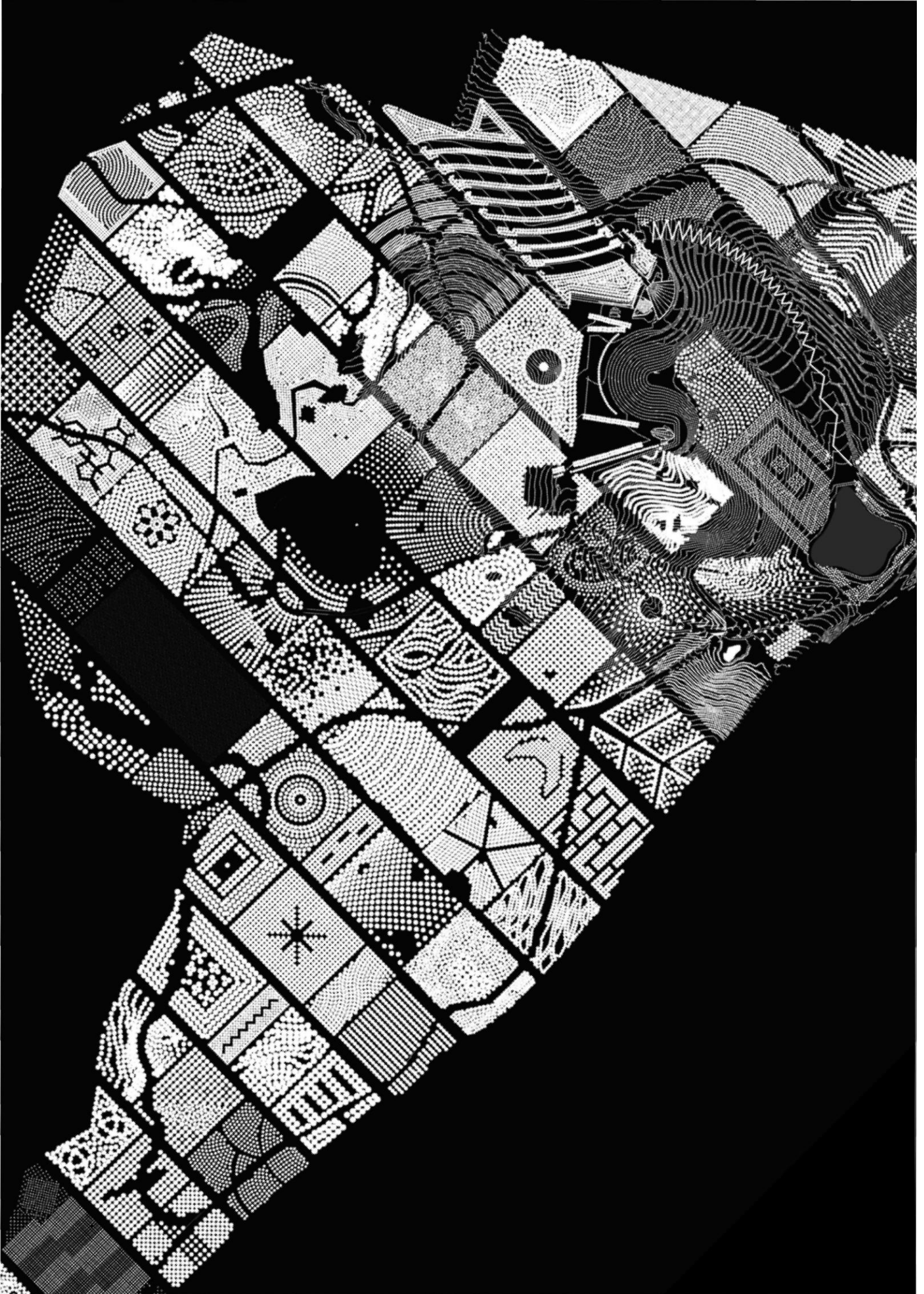


National Arboretum Canberra Master Plan 2018





Contents

Introduction.	6
2018 - 2028 Master Plan.....	8
• Future Proofing	10
• Visitor Experiences.....	17
• Commercial Opportunities	32
Appendices.....	36

Introduction

A symbol of recovery and regeneration following devastating bushfires in 2001 and 2003, the National Arboretum Canberra is celebrated for its forward thinking vision - as a place of beauty; for education, recreation, conservation and above all, a special place set aside for future generations.

In 2004, the ACT Government launched a national design ideas competition to inspire the most creative responses to its brief; in keeping with Walter Burley Griffin's plan for Canberra, an Arboretum located on the western side of Lake Burley Griffin; a jewel in the crown of Canberra's leafy landscape. In 2005, Taylor Cullity Lethlean Landscape Architects and Tonkin Zulaikha Greer Architects were announced as the winners of the competition, with their joint proposal, 100 Forests, 100 Gardens.

Since 2005, the 100 Forests, 100 Gardens master plan has been progressively implemented, with 100 of the 100 forests planted, almost half of the 100 gardens planned, and award winning and iconic facilities constructed; development of the Arboretum is on a positive trajectory. Time, testing and experimentation have always been core ideas of the original master plan. It is expected that its vision will be realised gradually over many years and shaped iteratively by generations.

The master plan presented here is an enhanced version of the original, and details development of the Arboretum by dividing projects into three categories; Future Proofing, Visitor Experiences, and Commercial Opportunities. Each project is linked to the Arboretum's original design intent, and all are important steps in ensuring not only the viability, but also the excellence and prosperity of the Arboretum and its development into the future. With higher than expected visitor numbers within the first four years of operation, and associated excellent satisfaction rates, it is imperative that the Arboretum continues to develop with a focus on constant improvement.

Location and Context

The Arboretum is a 250-hectare site just six kilometers from the centre of Canberra. The site is surrounded to the east and south by other significant cultural landscapes, including Black Mountain Nature Reserve, Lake Burley Griffin, the Australian National Botanic Garden and the National Zoo and Aquarium. Its surrounding context to the north and west is due to evolve significantly into a more suburban setting in the near future, as the Molonglo development master plan is implemented.

The Arboretum Vision and Mission

Vision: The National Arboretum Canberra is an internationally recognised Arboretum with outstanding beauty, community involvement and scientific and research value.

Mission: Create and nurture a living collection of international significance, for recreation, education, research and conservation.

The Arboretum Today

In its first decade from 2007, 100 of the Arboretum's 104 forests of culturally significant trees have been planted, many of the 100 gardens have been planned, and several key facilities have been realised. These include the Village Centre, which hosts interpretation, visitor services, a café, restaurant and gift shop. It forms the Arboretum's core precinct, along with the Margaret Whitlam Pavilion, which facilitates smaller private functions, an amphitheatre and adjacent terrace for outdoor performances and events, the revered National Bonsai and Penjing Collection, and the ever-popular Pod Playground. Arboretum-wide, a preliminary network of trails have been implemented, five art works sited in the forests, and picnic and barbecue facilities built in the Himalayan Cedar Forest. These facilities anchor the current visitor experience.

The 2018 Master Planning Document

This document aims to build upon the Arboretum's successful built projects of the past decade and outlines aspirational growth for the next decade, to develop more outstanding and unique spaces and facilities. The projects identified in this document are strategically considered to make the site more accessible, improve overall quality of the visitor experience, activate the landscape through new activities and events, and, overall, provide an expanded offer to a broad range of audiences. They will put the Arboretum on the map as a world-class experience and international destination.

The projects in this document will define the next decade and under each theme, projects are sequenced by priority. Additionally, each project page indicates a recommended timeframe.

Project Types

The projects span many locations, types and scales, from new trails and road circuits, to architectural additions, youth and play spaces, art installations and boutique accommodation.

The projects have been organised under the following themes:

- **Future Proofing** - Projects that provide key infrastructure and facilities to the site, setting the stage for the master plan's next ten years of projects and allowing for future increase in visitation.
- **Visitor Experiences** - Projects that realise, reveal, frame and enrich the Arboretum's key forest, cultural and play experiences.
- **Commercial Opportunities** - Projects that introduce new activities and visitor experiences to the Arboretum through private partnerships.





2018 Master Plan

The Arboretum’s upcoming projects are set across the whole site and at specific points and precincts.

The 2018 Master Plan Projects are reflected above in the evolving Arboretum Master Plan and Visitor Precinct Plan. Many projects are sited, however some are to be located in the future pending further investigation.

The subsequent pages describe the Arboretums 15 aspirational projects proposed over the next decade.

Future Proofing

1. Existing Built Environment Upgrades
2. Roads and Parking Strategy
3. Horticultural Depot Upgrades



Visitor Experiences

- 4. 100 Forests, 100 Gardens Vision
- 5. Amphitheatre Stage
- 6. Tracks and Trails
- 7. Playspace Expansion
- 8. Picnic Areas
- 9. Youth Precinct
- 10. Central Valley
- 11. Sky Garden
- 12. Tree Top Walk
- 13. Engineers Australia Freefall Experience

Commercial Opportunities

- 14. Commercial Opportunities
- 15. Boutique Hotel

Future Proofing

Projects that provide key infrastructure and facilities to the site, setting the stage for the master plan's next decade of aspirational projects and allowing for future increase in visitation.

1. Existing Built Environment Upgrades

The existing built environment at the Arboretum, including the Village Centre, the National Bonsai and Penjing Collection Pavilion and the Margaret Whitlam Pavilion are popular spaces within the Arboretum. However, as visitor numbers continue to increase, these buildings will need to be modified and adapted to optimise space and align with public expectations. The existing administration building consists of temporary structures and is only approved until 2022. A permanent administration building will need to be designed and constructed to allow efficient and effective staffing operations.

2. Roads and Parking Strategy

The existing road network and parking facilities at the Arboretum are in review. For safety purposes, it is recommended that the main loop, Forest Drive, be upgraded to a single lane one-way loop, including a dedicated cycle lane. Roads that are currently inaccessible to the public could be sealed, therefore making much more of the site accessible to visitors. It is also noted that as visitation continues to increase, additional parking spaces and different, safer permanent parking options should be offered.

3. Horticultural Depot Upgrades

Similarly to the temporary administration buildings, the horticultural depot is also impermanent and does not currently allow for best practice horticultural operations. It is expected that within the next 10 years, the Arboretum will be in a position to construct permanent, purpose built facilities to allow leading management and maintenance practices in horticulture, arboriculture and silviculture be undertaken to ensure the Arboretum's living collection is conserved for future generations.





Village Centre by TZG Architects
Image: John Gollings

1. Existing Built Environment Upgrades

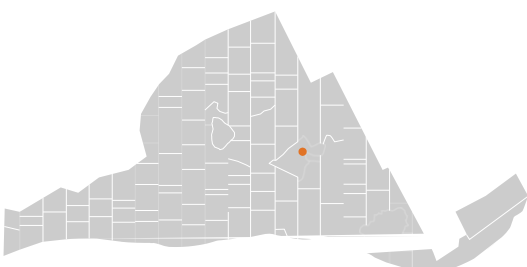
A modified and expanded core precinct, introducing new and improved visitor spaces and experiences; and improved staff and volunteer facilities to allow for improved operations.

Location: Village Centre, National Bonsai and Penjing Collection Pavilion, Margaret Whitlam Pavilion and Administration Buildings
Anticipated Costs: \$20M +

The core built environment at the Arboretum hosts an important range of resources and experiences. Arrival and orientation for Arboretum visitors, a complex of venues oriented towards arts and culture, and a hub for Arboretum staff. As visitation to the Arboretum increases, the expansion and upgrade of existing buildings and their associated outdoor spaces will be important, and will expand the range of spaces and uses for Arboretum visitors, staff, supporters and volunteers.

The Village Centre anchors the Arboretum's core and is subject to expansion, introducing new spaces and opportunities for education, interpretation, events spaces and commercial offerings. For example, extension of the main building into under utilised spaces could make room for flexible spaces that could be used for exhibitions, augmented reality demonstrations, conferences and events. Design of these spaces will be integrated with the existing Village Centre building and within the topography, to preserve and accentuate the key qualities of architecture and site, and to create a range of indoor-outdoor spaces and to showcase key views.

Another key facility of the Arboretum core is the Margaret Whitlam Pavilion, which currently provides space for private functions and events and accommodates 80-100 people. In the future, the footprint of the original design may be expanded to accommodate 150 people in the top level alone. A lower level of the Pavilion could be developed to house a five star restaurant and commercial kitchen, with the restaurant offering an unparalleled dining and events experience in Canberra. This will enable a majority of the functions, such as weddings, that are booked in the Margaret Whitlam Pavilion to remain on site and utilise the restaurant for longer periods of time.



Location Plan of Village Centre.



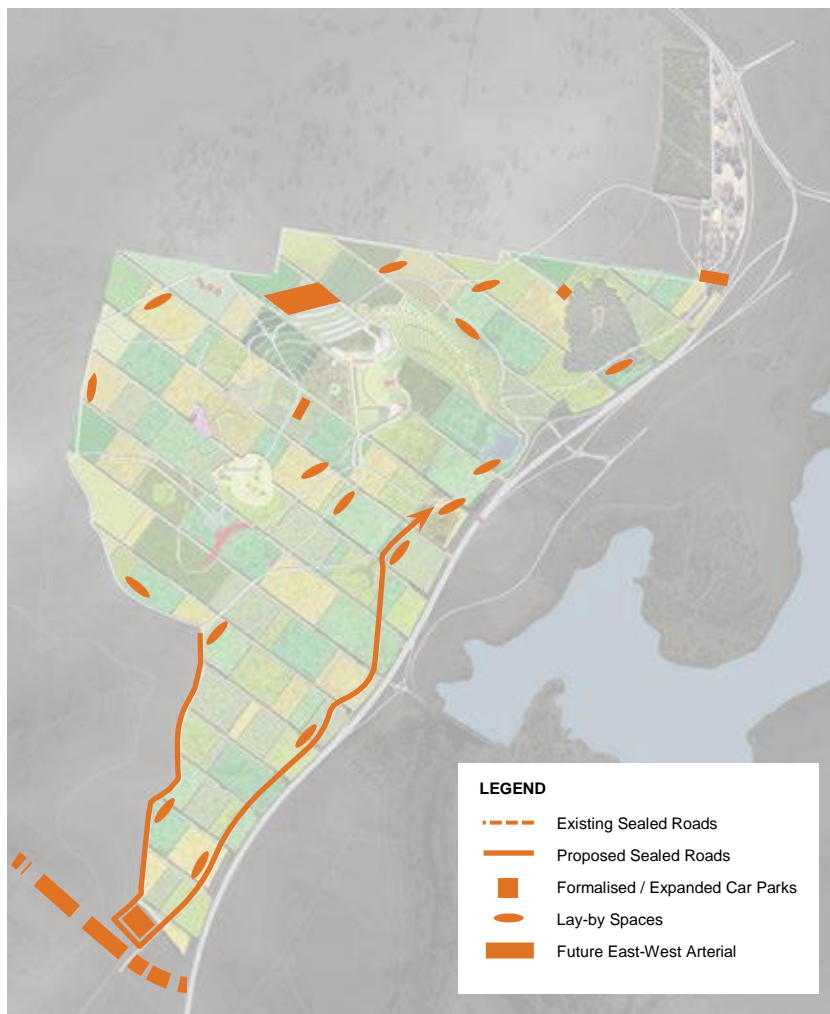
Village Centre by TZG Architects
Image: John Gollings

Redevelopment of the existing administration demountable structures is also proposed, including a permanent office building with meeting and research areas, volunteer lounge, and resource room. This upgrade is required to ensure Arboretum staff and volunteers have adequate facilities to operate from. Design of a permanent building will be in-keeping with the existing architecture on site, and could include Canberra's first commercial green roof, with the continuation of one of the Arboretum's forests above the roofline.

Before undertaking upgrades to the Arboretum's existing built environment, a feasibility study is required to review the current facilities and identify ways of enhancing visitor and education experiences. Options to undergo review are:

- The introduction of multi-use spaces to the Village Centre, designed to house interpretive displays with interactive components, multimedia and visitor experience spaces, education and exhibition spaces, and corporate areas;
- A potential large covered outdoor area to accommodate visiting interstate school groups;
- A permanent administration area for staff, supporters and volunteers; and
- A possible 5 star restaurant, which may be located at the Margaret Whittlam Pavilion.

Please see **Appendix A** for preliminary concepts for the Arboretum's built environment upgrade.



2. Roads and Parking Strategy

An upgrade of the Arboretum's road and car parking network to provide greater access to the emerging forests for visitors, improve safety on site, and reduce ongoing maintenance costs.

Location: Forest Drive, Boundary Road, Totara Road, River Road, Cork Oak, and other connecting roads; Village Centre car park

Anticipated Costs: \$8M +

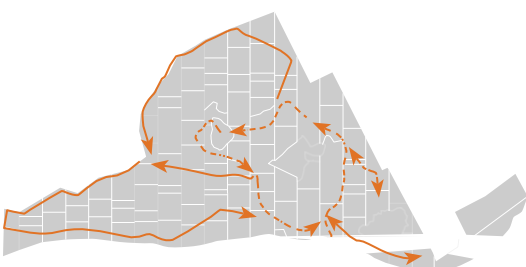
The Arboretum's roads vary from high-quality sealed circuit roads to unsealed maintenance tracks. Currently, most visitation to the Arboretum is concentrated around its core visitor facilities, where roads are sealed and parking is formalised. A Roads and Parking Strategy can introduce greater visitor access to the Arboretum's forests and facilities.

Strategically, the Roads and Parking Strategy should form a one-way sealed circuit drive with an integrated cycle path and strategically selected layby spaces for drivers to stop for short periods of time. Additionally, there is opportunity to formalise unsealed roads throughout the Arboretum, which are currently only accessible to maintenance vehicles, to improve access and appreciation of the forests that are currently under appreciated. See **Appendix B** for preliminary Roads and Parking Strategy mapping. The re-surfacing of roads to shed water will also reduce ongoing maintenance costs, reduce sediment movement, facilitate safer public access and provide for safe fire management.



National Arboretum Village Centre
Image: Nearnap

As part of the Roads and Parking Strategy, parking capacity throughout the Arboretum should be improved. This will include layby areas, introduced at key lookout points throughout the Arboretum, to provide vistas and parking for forest access. Additionally, the Village Centre's overflow car park will be extended, formalised and sealed, to expand the carrying capacity of the Arboretum at its core visitor facilities. The car park will be an integrated continuation of the Crepe Myrtle Forest (Forest 24), to minimise the car park's visual impact and provide shade as part of a unified landscape experience. Integrated pedestrian connections and water capture and reuse will link the car park to the circulation and Water Sensitive Urban Design (WSUD) systems at the Arboretum. See **Appendix C** for overflow car park preliminary design and cost estimate report.



Key Plan of upgraded road network.



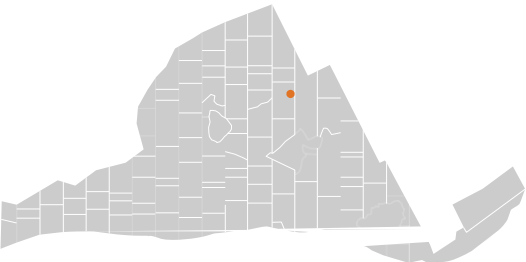
3. Horticultural Depot Upgrades

Existing temporary depot facilities to be transformed into a purpose-built facility allowing for the best practice management of the Arboretum’s significant living collection.

Location: Horticulture Depot Compound – Forest 28
Anticipated Costs: \$3M +
Precedents: New Parliament House - Canberra

Management of the Arboretum’s forests and grounds, including pruning, planting, mulching, fertilising, mowing, weeding, spraying, and pest and disease control is undertaken out of a relatively basic temporary horticulture compound that barely meets standards and building code requirements. As a way of future-proofing the Arboretum and ensuring high quality management and maintenance practices are upheld on site, the Arboretum will need to develop a permanent, purpose-built horticultural depot that allows staff and volunteers to operate at maximum efficiency while being safe.

It is expected that by 2020, the Arboretum will have developed detailed design documentation to support the construction of a suitable horticultural depot, with input from relevant ACT and Federal government authorities, as well as suitably qualified architects, engineers and experts in the construction of depot facilities.



Key Plan of Horticultural Depot

Visitor Experiences

Projects that realise, reveal, frame and enrich the Arboretum's key forest, cultural and play experiences.

4. 100 Forests, 100 Gardens Vision

It is important that the original design intent of the Arboretum is continued, that is to showcase and cultivate more than 100 Forests of culturally significant tree species from all over the world, and 100 Gardens of exceptional landscape character for local, national and international visitors; and for generations to come.

5. Amphitheatre Stage

Located at the base of the existing amphitheatre, original planning documentation included a multi-functional stage and amenity building with the capacity to host a range of performances. It is understood that this type of venue is limited in the ACT, and would be particularly popular at the Arboretum given easy of accessibility and unsurpassed views out from the amphitheatre.

6. Tracks and Trails

The Arboretum has commenced building a network of multi-use trails across the site, and is committed to constructing additional trails that will allow visitors to explore every forest at their leisure. The trails will also include provisions for a public art trail, creating a unique tourism experience for the Canberra region.

7. Playspace Expansion

Pod Playground is an iconic Canberra landmark, and is regularly brimming with the energy young children exude when they are having fun. The playground is so popular that it is often too busy, and is in need of expansion. The Arboretum has engaged Taylor Cullity Lethlean (TCL) to produce concept level documentation to support expansion of Pod Playground, and expects that construction will need to be complete by 2020 if the playground space is going to meet with demand.

8. Picnic Areas

The Arboretum currently has one picnic and BBQ facility on site, located within the natural shelter of the 100-year-old Himalayan Cedar Forest. This facility is well used, and is often full of families on any given weeknight during warmer months. The Arboretum has identified a need to offer additional picnic areas for visitors in a range of different locations across the site.

9. Youth Precinct

Canberra is currently lacking an active and vibrant youth precinct that combines a central location with the feel of a natural environment. The existing quarry and surrounds at the Arboretum are the ideal areas to allow young people to partake in active recreation, such as rock-climbing, BMXing, skating and informal performance.

10. Central Valley

From its inception, central valley has been an exciting and dynamic landscape feature of the Arboretum's master plan. To ensure visitors can connect with and appreciate the story of central valley, there are a number of elements that should be progressed, including the dignitary plantings and federation forest, the zig-zag gardens, and the water feature, the showpiece of central valley.

11. Sky Garden

The landscape directly in front of the glass windows in the Village Centre is difficult to maintain as a usable and attractive space. It is important that this area is landscaped to a high standard to reflect the high quality surrounding landscapes, thus a concept design has been produced for Sky Garden. The design aims to enhance the Village Centre, to make it seem as if it's floating, whilst also providing functional pathways, a viewing platform and seating.

12. Tree Top Walk

To take advantage of the spectacular views afforded by most of the Arboretum site, it is proposed that a tree top walk be constructed within one or more of the established forests. This would become a popular attraction for visitors to the region, and would help people connect with the story of the Arboretum as they walk through the canopies of some of the world's most significant trees.

13. Engineers Australia Freefall Experience

In 2013, Engineers Australia launched a national competition to design an engineering 'experience' within the Arboretum's Pin Oak Forest (Forest 41) in preparation for their 2019 Centenary celebrations. The winning design was announced in 2014, being an elevated viewing platform inspired by the Cochlear Ear Implant, an Australian invention.





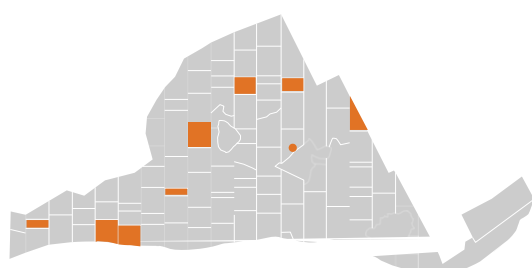
National Arboretum Forest Plantings
Image: Ben Wrigley

4. 100 Forests, 100 Gardens Vision

Completing the Arboretum's principal vision of 100 Forests and 100 Gardens.

Location: Throughout the Arboretum

Anticipated Costs: \$3M + to complete forests, \$350k to complete 100 Gardens strategy



Key Plan of Forest Plantings and Gallery of Gardens.

The master plan's vision of 100 Forests and 100 Gardens will be realised over the next 10 years.

To complete the master plan's 100 Forests vision, the Arboretum's four unplanted forests will be planted. Given the Master Plan's focus on testing, trial forests will also be a component of this planting scope. The unplanted forests to be planted include Forest 13, 29, 47, 69 (possible hotel site), 78 and 91.

Building upon the Arboretum's existing gardens, the Master Plan's vision of 100 Gardens will also be realised. Gardens may vary in scale and type, from temporary installations to permanent works, from large to small and discovered, and the full 100 Gardens experience may form a potential curated experience. Gardens may be sited within forests or as part of other Arboretum initiatives, such as the Public Art Trail, the Sky Garden, the Margaret Whitlam Pavilion surrounds, temporary gardens on the Events Terrace, and the Quarry and Hotel precincts. The 100 Gardens will be focused towards philanthropic relationships between the Arboretum and individuals and organisations. For more information on key garden design criteria, donations towards gardens, garden locations and scoping, see **Appendix D**, 100 Gardens Strategy.

The Gallery of Gardens, a series of seven oval garden spaces near the Village Centre, will be completed as a priority. Five of the gardens—the Open Gardens Australia Celebration Garden, the Labyrinth Garden, the AIDS Garden of Reflection, the Mununja the Butterfly Garden and the Children's' Garden—have been realised. The final two gardens, the Gift of Life and Terra Australis Gardens will be constructed in 2018. Once complete, the Gallery of Gardens precinct will provide a mosaic of unique garden spaces for functions, events and recreation, linked to the Events Terrace and Village Centre.



National Arboretum Discovery Garden by TCL
Image: John Gollings

Other gardens to be completed as a priority include the Friends of the Arboretum garden at Dairy Farmers Hill (Friends Garden) and the Central Valley Gardens.

It is important to establish key criteria for future gardens at the Arboretum, including appropriate theming, quality, scale and procurement. Criteria should include:

- Siting - Appropriately integrated within forests;
- Quality - Subject to design review;
- Theming - Responsive to forest-specific themes and overall Arboretum values and stories; and
- Scale - Appropriate scale; does not detract from design intent of forests or surrounds.



Stage 88, ACT Commonwealth Park
Image: blog.iinet.au

5. Amphitheatre Stage

A stage and canopy opens the Amphitheatre to an expanded range of open-air events.

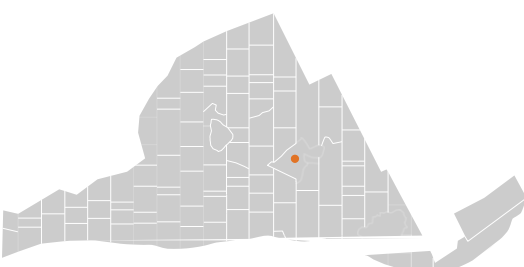
Location: Amphitheatre

Anticipated Costs: \$80k detailed design, \$15-20M for construction
Precedents: ACT Commonwealth Park Stage 88, Sidney Myer Music Bowl and the Sound Shell at Natures Concert Hall, Bermagui

Currently, the Arboretum is unable to easily facilitate large-scale events or performances on site due to limited facilities and amenities for both visitors and performers. The lack of suitable infrastructure is highlighted by general feedback received through the visitor comments register, and the uncertainty that has been conveyed by numerous events companies when investigating the potential to hold outdoor entertainment events at the Arboretum.

In the 2018/2019 budget, \$150k has been allocated for feasibility analysis and concept design drawings.

The stage itself will provide a sheltered area on which a range of performances such as jazz and poetry can be held, as well as a back-of-house area including change rooms and toilet facilities. With a capacity for approximately up to 5,200 people seated, the amphitheatre and purpose built stage would be able to attract a range of unique performance offerings. When not in use for performances, the stage area and toilet facilities will be accessible by the public, making it a useful multi-functional building. This project links with the Arboretum's vision to implement its original design intent, and is based on feedback received by the public and industry to provide more diverse venue options at the Arboretum, while addressing Government priorities such as enhancing economic growth and boosting spending with local services.



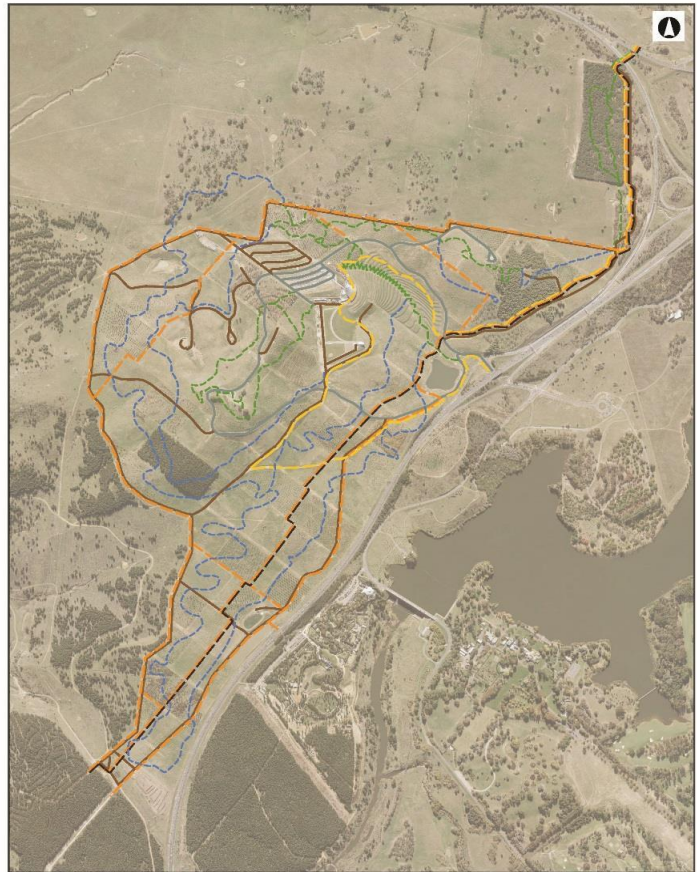
Key Plan of Amphitheatre



NATIONAL ARBORETUM CANBERRA - EXISTING AND PROPOSED TRACKS & TRAILS NETWORK

KEY (Types of Tracks / Trails and users)

- EXISTING SEALED ROADS
- VEHICLES
- CYCLISTS
- EXISTING UNSEALED ROADS
- VEHICLES
- CYCLISTS
- WALKERS / JOGGERS
- EQUESTRIANS (WHERE PERMITTED)
- - - EXISTING TRAILS (SEALED AND UNSEALED)
- WALKERS / JOGGERS
- CYCLISTS
- - - BICENTENNIAL NATIONAL TRAIL (BNT)
- WALKERS / JOGGERS
- CYCLISTS
- EQUESTRIANS
- - - CANBERRA CENTENARY TRAIL
- WALKERS / JOGGERS
- CYCLISTS
- - - RECOMMENDED EQUESTRIAN TRAILS
- EQUESTRIANS
* NOTE THESE TRAILS ARE ALSO ACCESSIBLE
BY WALKERS / JOGGERS, CYCLISTS AND VEHICLES
- - - PROPOSED FUTURE MULTI-USE TRAILS
- WALKERS / JOGGERS
- CYCLISTS
* NOTE - TRAIL LOCATIONS ARE INDICATIVE ONLY, TRAILS ARE
MULTI-DIRECTIONAL.
INCLUDES PROPOSED FUTURE PUBLIC ART TRAIL LOOP



6. Tracks and Trails

A variety of new tracks and trails will further enhance the Arboretum experience, linking a range of forests, art and sculpture, shelters, interpretation and key lookouts.

Location: Throughout the Arboretum.

Anticipated Costs: \$450k

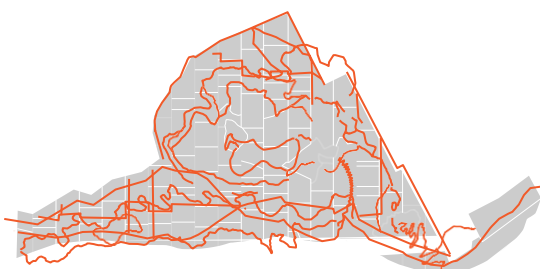
Particularly as the Arboretum's forests mature, new trails will be required for visitors to access the full range of experiences on offer. In the upcoming years, a Tracks and Trails Master Plan will be implemented, to upgrade existing trails and furnish them with appropriate resting points at key nodes. Links to tracks and trails beyond the Arboretum, such as those to Black Mountain, the Botanic Garden, Mount Stromlo and the Yarramundi Precinct (currently in development) should be reinforced as part of this strategy.

In the 2018/2019 budget, \$225k has been allocated for new tracks and trails through the Arboretum.

The Tracks and Trails Master Plan will include several themed trails, including a new Public Art Trail. The Public Art Trail will link a range of art and sculpture across the Arboretum, forming an 8km journey through the Arboretum connecting approximately 16 -18 artworks installed over 20 years. The art trail will be developed to host permanent art works as well as link to designated spaces within the forests that can host temporary installations, art events and interactive media, including performance art and music.

Additionally, a Night Trail, illuminated by renewable energy sources, will introduce a new night-time experience to the Arboretum, similar to the Enlighten Festival, Canberra and Vivid, Sydney. The area along one of the trails should also be investigated to potentially incorporate fitness equipment and be promoted as a fitness circuit.

Refer to the Tracks and Trails Master Plan at **Appendix E** for further information.



Key Plan of Tracks and Trails.



National Arboretum Canberra - Shelter Concept Design
Image: PVH Architects

Associated with the Tracks and Trails network, a series of all-weather protected shelters will be located at key vantage points throughout the Arboretum. These shelters will provide seating and interpretation, and accommodate 8-12 people. Shelters will be sited to have visual links to up to 6 forests and could be located at the STEP Forest, along the walkway to Dairy Farmers Hill, and throughout the southern forests.

Designs have been developed by the Arboretum to aid in the establishment of a series of shelters that will share a common design language. The full series of shelters will be implemented as funding allows, in line with the development of the Arboretum's Tracks and Trails network. Please see **Appendix F** for further details regarding the shelter designs.

As the Tracks and Trails Master Plan is developed, a holistic suite of signage should provide navigational infrastructure for wayfinding across the site, information on the 100 Forests and additional interpretive information for the precincts and sites within the Arboretum. Signage should be sensitive in appearance and scale and at all times subservient to its forest context.

An art strategy is important in providing guidance on appropriate theming, quality, scale and procurement. To support the following criteria, an artwork selection policy has been developed at **Appendix H**.

- Siting - Appropriately integrated within forests and surrounds;
- Quality - Subject to design review and including criteria regarding materials, foundations etc;
- Theming - Responsive to forest-specific themes and overall arboretum values and stories; and
- Scale - Appropriate scale; does not detract from design intent of forest and surrounds.



Pod Playground by TCL
Image: Brett Boardman

7. Playspace Expansion

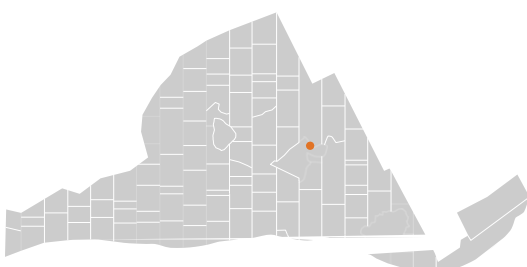
An expansion of the Pod Playground to build upon its unique features, to accommodate greater numbers of children and cater for a greater range of ages.

Location: Pod Playground and the Mesa Oak Forest

Anticipated Costs: \$3M +

The Pod Playground is the Arboretum's iconic and well-loved playspace. Expanding the playground to include additional lawn spill out space, shade and new play areas, to ensure that a greater number of children and adults can enjoy the space. New types of play may include adventure- oriented play involving ropes, nets and ziplines, to introduce new play opportunities to a greater range of ages.

Subject to review and a traffic report, the existing service road to the east of the play space may be modified, to extend the precinct eastward whilst maintaining delivery and emergency access to the Village Centre. The playground may also potentially be expanded and integrated into the design of Mesa Oak Forest to the north-east. For concept design for the playspace expansion, please refer to **Appendix I**.



Key Plan of Expanded Playspace.



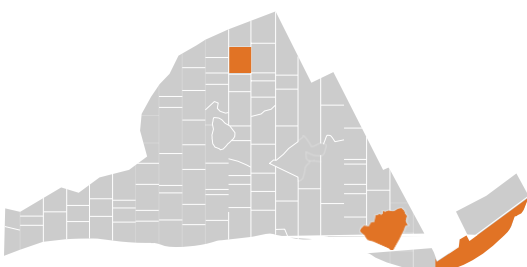
Himalayan Cedar Forest Barbecue and Seating Area by TCL
Image: John Gollings

8. Picnic Areas

A series of wetland viewing platforms and a barbecue area at Forest 2 (remnant bush land, new picnic and barbecue facilities at the dam area in Forest and expansion of the barbecue facilities at the Himalayan Cedar Forest.

Location: Forest 2 (Remnant trees), Forest 11 (Himalayan Cedar Forest) and Forest 36 (European Larch)

Anticipated Costs: \$3.5M +



Key Plan of Forest 2, the dam area and the Himalayan Cedar Forest.

Two new picnic areas—at Forest 2 and the dam area in Forest 36 —and one expanded picnic facility—at the Himalayan Cedar Forest—will introduce new barbecues, picnic areas, seating and circulation to the Arboretum's forests.

At Forest 2, a series of decks and viewing platforms throughout the upgraded ephemeral wetlands will highlight key areas of the remnant landscape and reinforce the narrative of the forest's critically endangered ecological community. These decks will be integrated with visitor furnishings such as seating and barbecues, to complement the facilities at the adjacent Cork Oak Forest (Forest 1). A layer of interpretation, integrated within the viewing platforms, will further reveal the forest's stories. Connections between the adjacent car park the new facilities at Forest 2 will improve the visitor circulation experience and build a sense of precinct at the Arboretum's north.

At the dam area in Forest 36, the introduction of modest visitor facilities, including picnic and barbecue facilities and irrigated grass areas will open this precinct to new uses, events and experiences. Facilities will include seating, to make the area more functional, accessible and comfortable for all visitors.

The existing picnic facilities at the Himalayan Cedar Forest will be expanded, to build upon this successful precinct and allow for more visitors to enjoy spending time in an established forest space.



Image: Creative Commons

9. Youth Precinct and Active Zone

The former quarry site, framed by imposing vertical landscape walls, can become a hidden visitor destination within the Arboretum.

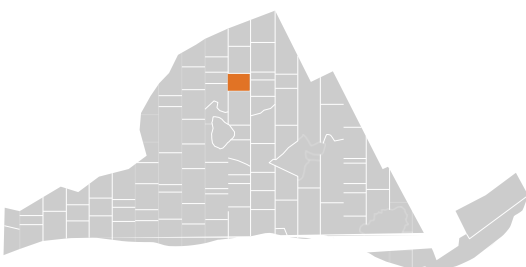
Location: Quarry site, Forest 47

Anticipated Costs: \$3M +

A youth precinct can cater for a new set of activities focused on younger visitors. The precinct will encompass the quarry area in Forest 47. The rehabilitated quarry walls can provide a dedicated rock climbing facility, planted with dramatic trees to complement the verticality of the landscape. Additionally, the large, open space within the quarry site can be developed with irrigation and turf to enable a range of flexible visitor uses, from temporary accommodation and overnight camping for school groups, to active recreation, to events, including music, theatre and the arts. This precinct could also include a skate park located nearby, linking the Arboretum to the Molonglo development to the north. The existing access road will also need to be upgraded as part of the works package.

Amenities such as toilets, water and power (linked from Dairy Farmer Hill), should be considered in the Youth Precinct and Active Zone, to support recreation and events as well as more permanent camping structures in the future.

Informal nature play spaces have taken shape in several forests of the Arboretum, for instance in the Himalayan Cedar Forest. The playspaces are selected and 'designed' by visiting children, a phenomenon to embrace and encourage. As part of the Youth Precinct, there is potential to foster and curate this process in multiple changing locations over time as sites are identified and modified by visiting children.



Key Plan of Quarry Site.



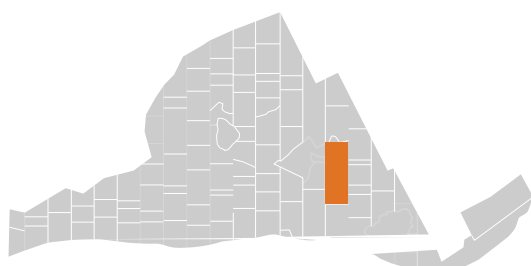
2011 Water Feature Concept by TCL

10. Central Valley

Central Valley incorporates a growing dignitary forest of significant trees to commemorate the legacies of notable Australian and international dignitaries, future gardens to complement the dignitary plantings, and a future water feature with play components.

Location: Central Valley

Anticipated Costs: \$5M +



Key Plan of Central Valley.

The Arboretum has a growing Federation Forest, sited at the Central Valley's terraces. Its Australian native tree plantings commemorate the contributions of significant Australians and overseas dignitaries. Over time, the Federation Forest will be completed gradually, to represent a growing legacy. In the future, a Prime Ministers 'Avenue of Honour' may also be introduced to the Arboretum.

Aligning with the Arboretum's vision for 100 Gardens, central valley provides the opportunity to implement 24 separate garden spaces that run the length of the zig-zag pathway. These gardens are intended to be planted on mass, to achieve a stunning visual display of colour and texture from any angle when viewed from across the site. It is anticipated that the development of each of these gardens will be financially supported by an organization or individual, and will contain relevant commemorative material.

The existing channel running the spine of Central Valley and the dam will be formalised as a water feature, to enhance the Arboretum's water system and highlight the landscape's water story. The water feature will incorporate play elements such as a shallow channel, stepping stones and small water falls. The play space will include seating, lawn and shade to introduce a key facility for children and families to the Arboretum.

Refer to the Central Valley Master Plan by the National Arboretum at **Appendix J** for further detail.



Sky Garden concept plan by TCL
Image: TCL

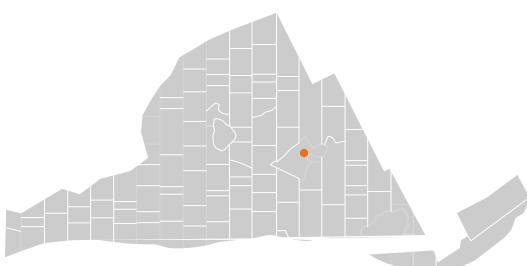
11. Sky Garden

A sweeping Sky Garden and terrace encircling the Village Centre will create the illusion of a floating building, and provide dramatic, panoramic views over Central Valley to Lake Burley Griffin.

Location: Interface of the Central Valley and Village Centre

Anticipated Costs: \$500K

The Village Centre building provides panoramic views over Central Valley to Lake Burley Griffin and Canberra City. The adjacent landscape is currently dryland grass with limited access points. There is opportunity to exaggerate the drama of this signature vista by introducing a sweeping path and a belvedere deck at the interface of the Village Centre and Central Valley. The Sky Garden will also include colourful mass plantings with integrated seating alcoves for gathering.



Key Plan of Sky Garden.



Valley of the Giants Walk, WA
Image: Nic Duncan, www.amazingalbany.com.au

12. Tree Top Walk

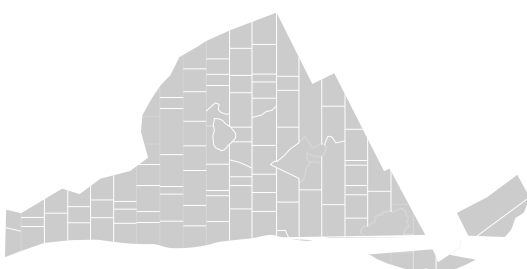
A tree top walk through a mature forest canopy will introduce a new forest experience to the Arboretum. This major visitor draw card will uniquely complement the Arboretum's diverse forest landscape and help to tell the story of the Arboretum and garner further interest in the forest plantings.

A tree top walk to introduce a unique, canopy-focused experience at the Arboretum.

Location: To be determined

Anticipated Costs: \$30M +

Precedents: Valley of the Giants - WA, Kings Park - Perth, Otway Treetop Walk - VIC



Key Plan of Tree Top Walk.



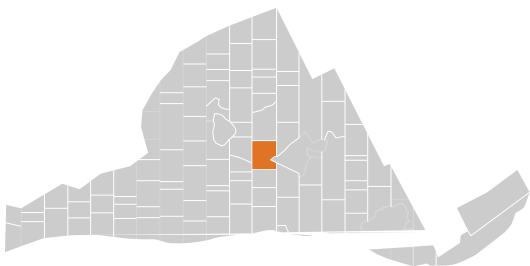
Artist's impression of the Engineers Australia Freefall Experience within the Pin Oak Forest, Engineers Australia Design Ideas Competition.

13. Engineers Australia Freefall Experience

A dramatic sculptural form and outlook within the Pin Oak Forest— the Freefall Experience.

Location: Pin Oak Forest (Forest 41)
Anticipated Costs: \$2M (donated funds)

Engineers Australia has commissioned the design of a Freefall Experience at the Pin Oak Forest (Forest 41), as a spiral sculptural folly and dramatic lookout to the Arboretum’s southern forests. The Freefall Experience will include a viewing platform and level meeting place to the northwest of the sculpture, and will link to the Arboretum’s greater circulation network via a new formed path to the existing Dairy Farmer’s Hill path.



Key Plan of Free Fall Sculpture and Connections.

Commercial Opportunities

Projects that introduce new activities and visitor experiences to the Arboretum through private partnerships.

14. Commercial Opportunities

As the Arboretum grows, opportunities to diversify commercial offerings on site will increase. It is anticipated that as existing infrastructure on site is improved and new infrastructure is developed, that commercial operations such as food and beverage vans and equipment hire would be a popular and viable feature on site.

15. Boutique Hotel

Since inception, boutique accommodation has been included on the Arboretum's master plan. It is anticipated that the design, construction and operation of the hotel will be a commercial venture, however the Arboretum and relevant authorities will be closely involved with design development to ensure it is in keeping with the original design intent.





14. Commercial Opportunities

A series of locations for ephemeral commercial operations/pop-ups (such as a food vans) and equipment rentals (ex. bicycle and segue hire) can further activate the forest landscape.

Location: Throughout the Arboretum
Anticipated Costs: \$2M + (to construct associated facilities)

The size of the Arboretum site and its many different points of interest allow for opportunities to permit approximately five small commercial vendors to operate at a range of key areas across the site. For example, pop-up food vendors could serve select food and beverage options throughout peak periods in locations that receive high visitation, such as the Himalayan Cedars or Cork Oak Forests. Vendors could also be co-located with other facilities such as shelters, picnic tables and viewing platforms, to enhance the visitor experience in these areas.

Other vendors may be able to operate hiring businesses, such as bicycle and segue hire, which will assist in allowing visitors to experience more of the Arboretum's forests and key attractions that are not located in the core areas.

Expanding opportunities for commercial operations at the Arboretum would have a positive effect on the Arboretum's revenue stream, allowing further improvements on site.

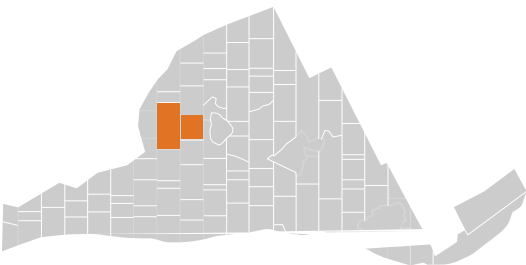


MONA Pavilions Hotel
Image: ?

15. Boutique Hotel

A planned part of the Arboretum since the original competition brief and master plan, a boutique hotel provides visitors a unique accommodation alternative—within a forest setting yet close to the attractions of Canberra.

Location: Central hotel facility within Forest 69 and modular accommodation in Forest 76.
Precedents: Saffire - Tasmania, MONA Pavilions - Tasmania, Southern Ocean Lodge - Kangaroo Island



Key Plan of Hotel Site and Modular Accommodation.

A medium sized boutique hotel at Forest 69 will provide a unique accommodation offer for visitors to Canberra, and will complement the range of attractions and facilities at the Arboretum. It is expected that an Expression of Interest will be released in 2018/19 to determine possible private partnerships that could be progressed in order to develop the site.

Designed to be integrated within its setting, the hotel will complement the forest context and convey the environmental values of the Arboretum. The hotel will comprise a range of facilities including a main building with food and beverage offers, reception, meeting rooms and accommodation. It is not envisaged that it will provide major conference or function/event facilities as these will still continue to run from the Village Centre and Margaret Whitlam Pavilion.

The hotel will potentially also function as a central hub to a series of bespoke rooms or modular accommodation (15 - 20 pods). Located at Forest 76, these modules will be linked by a range of pathways.

The hotel will be delivered under detailed guidelines to ensure design excellence and environmental sustainability standards are achieved. Views to and from the hotel will be an important design and planning aspect of the proposal, as will architectural features and materials.

Appendices

- Appendix A** - Preliminary Concepts – Built Environment Upgrade
- Appendix B** - Preliminary Roads and Parking Strategy (mapping)
- Appendix C** - Overflow Car Park - Preliminary Design and Cost Estimate Report
- Appendix D** - 100 Gardens Strategy (draft)
- Appendix E** - Tracks and Trails Master Plan (draft)
- Appendix F** - Shelter Concept Designs
- Appendix G** - Signage Master Plan (draft)
- Appendix H** - Artwork Selection Policy
- Appendix I** - Playspace Expansion – Concept Design
- Appendix J** - Central Valley Master Plan