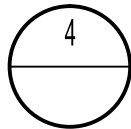


WORKS APPROVAL



View from Alexandrina Drive
4:00 PM - Mid February

DATE
27/04/18

ISSUE
WORKS APPROVAL

REV
A



Note
All dimensions to be checked on site. Any discrepancies to be referred to architect prior to proceeding. All levels to AHD u.n.o. All measurements in millimetres. Use written dimensions only. Do not Scale from drawings.

© COPYRIGHT

Project CGS ROWING SHED REDEVELOPMENT ALEXANDRINA DRIVE, YARRALUMLA BAY			
Client	Canberra Grammar School	Block	3
Section	19	Division	YARRALUMLA
Drawing Perspectives			

Date	MARCH 2017
Drawn	LK/SA
Scale	NTS
Job No.	1715
Dwg No.	DA23
Rev:	-

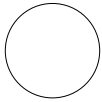

SteveAndrea
ARCHITECTURE P/L
ARBN NSW 6954 ACT 2261
m 0412029146
t 62327199



DATE
27/04/18

ISSUE
WORKS APPROVAL

REV
A



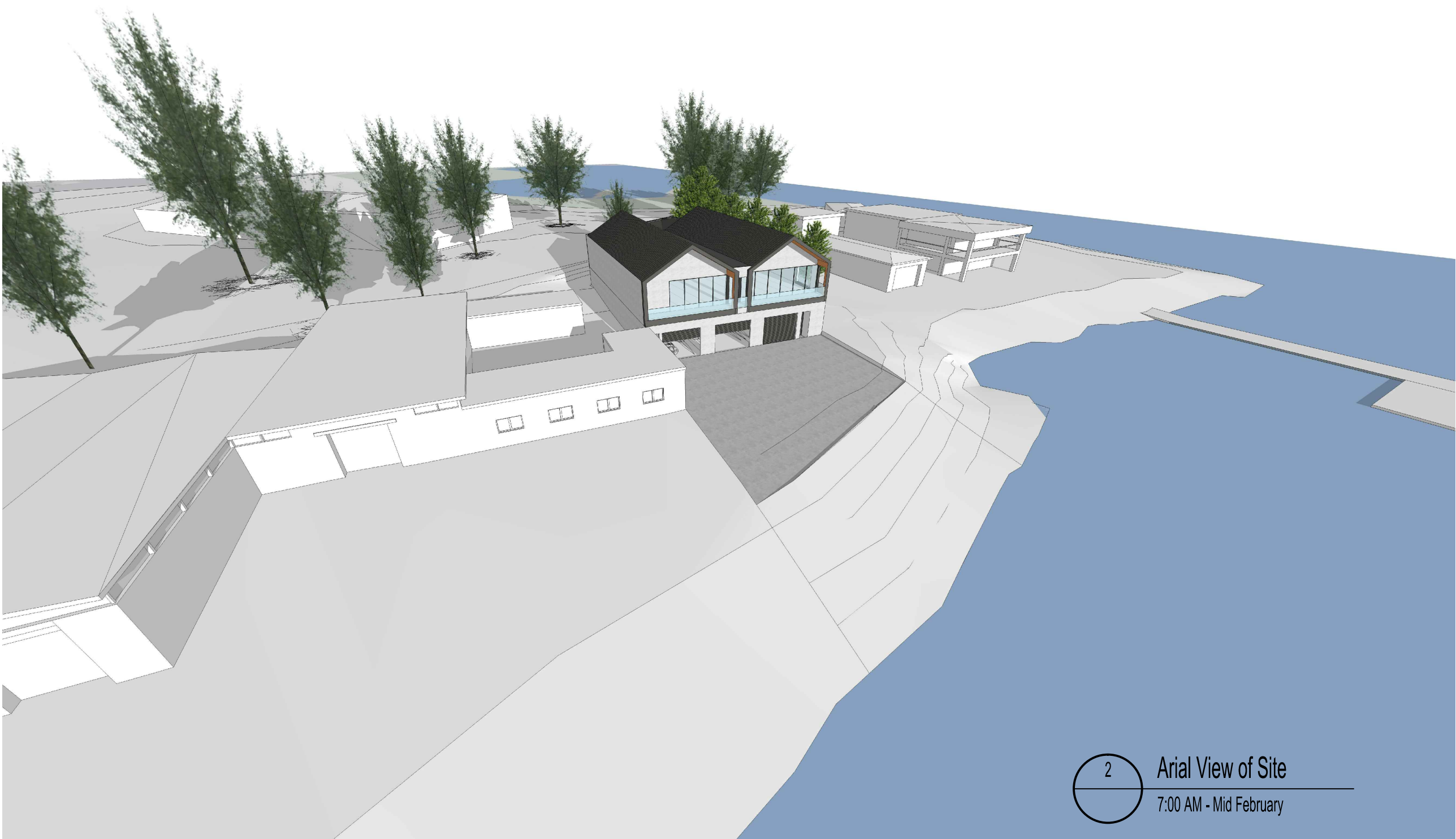
Note
All dimensions to be checked on site. Any discrepancies to be referred to architect prior to proceeding. All levels to AHD u.n.o. All measurements in millimetres. Use written dimensions only. Do not Scale from drawings.

© COPYRIGHT

Project CGS ROWING SHED REDEVELOPMENT ALEXANDRINA DRIVE, YARRALUMLA BAY			
Client	Canberra Grammar School	Block	3
		Section	19
		Division	YARRALUMLA
Drawing Perspectives			

Date	MARCH 2017
Drawn	LK/SA
Scale	NTS
Job No.	1715
Dwg No.	DA22
Rev:	-

WORKS APPROVAL



DATE 27/04/18	ISSUE WORKS APPROVAL	REV A	<div><div></div><div>Note All dimensions to be checked on site. Any discrepancies to be referred to architect prior to proceeding. All levels to AHD u.n.o. All measurements in millimetres. Use written dimensions only. Do not Scale from drawings.</div><div>© COPYRIGHT</div></div>	Project CGS ROWING SHED REDEVELOPMENT ALEXANDRINA DRIVE, YARRALUMLA BAY				Date	MARCH 2017	<div><div><div>SA</div><div>SteveAndrea</div><div>ARCHITECTURE P/L</div></div><div>ARBN NSW 6954 ACT 2261 m 0412029146 t 62327199</div></div>				
								Drawn	LK/SA					
				Client	Canberra Grammar School	Block	3	Section	19		Division	YARRALUMLA	Scale	NTS
				Drawing Perspectives								Job No.	1715	
								Dwg No.	DA20	Rev:	-			

WORKS APPROVAL



DATE 27/04/18	ISSUE WORKS APPROVAL	REV A	<div><div></div><div>Note All dimensions to be checked on site. Any discrepancies to be referred to architect prior to proceeding. All levels to AHD u.n.o. All measurements in millimetres. Use written dimensions only. Do not Scale from drawings.</div><div>© COPYRIGHT</div></div>	Project CGS ROWING SHED REDEVELOPMENT ALEXANDRINA DRIVE, YARRALUMLA BAY				Date MARCH 2017	<div><div><div></div><div>SteveAndrea</div><div>ARCHITECTURE P/L</div></div><div>ARBN NSW 6954 ACT 2261 m 0412029146 t 62327199</div></div>
								Drawn LK/SA	
				Client Canberra Grammar School	Block 3	Section 19	Division YARRALUMLA	Scale NTS	
				Drawing Perspectives				Job No. 1715	
								Dwg No. DA21	Rev: -