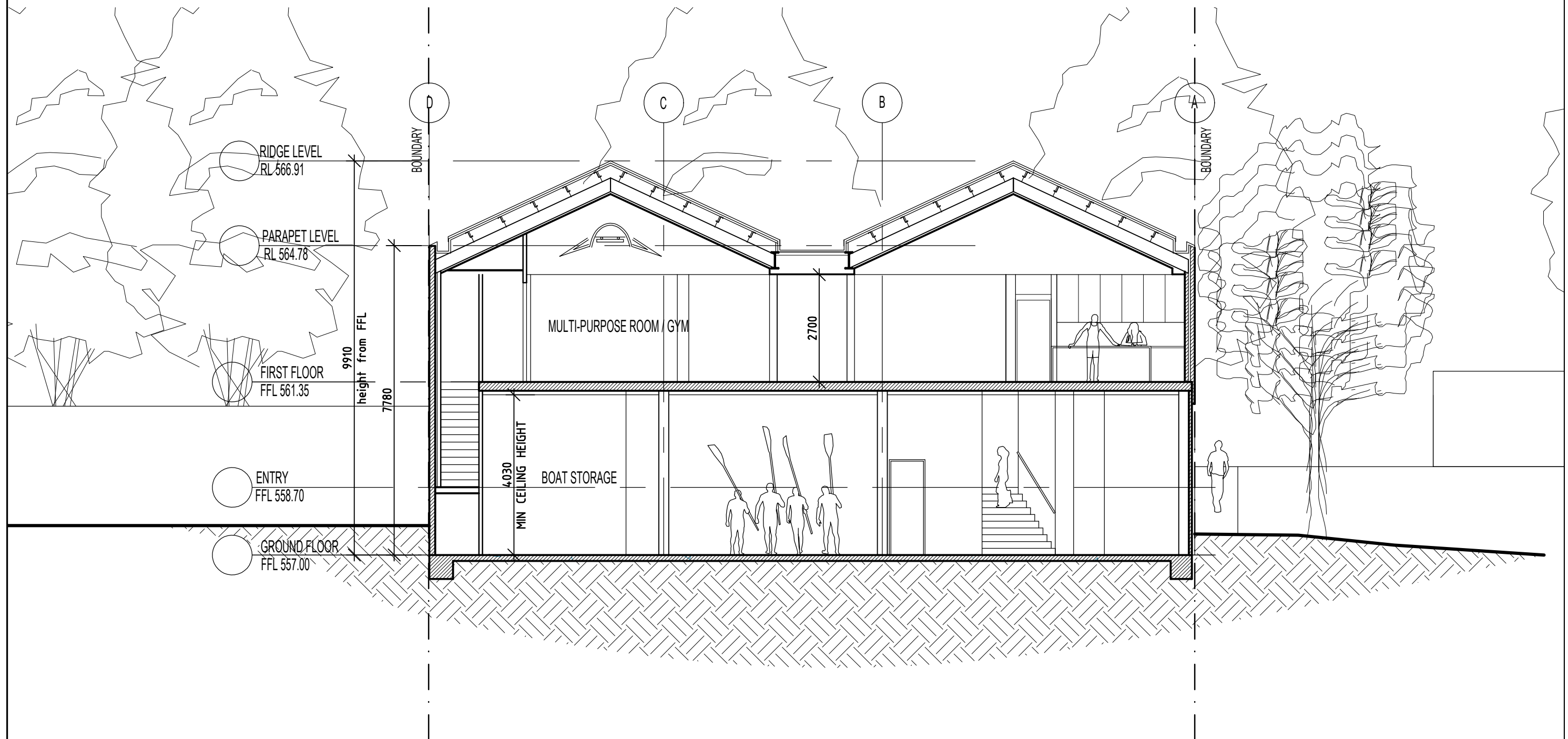


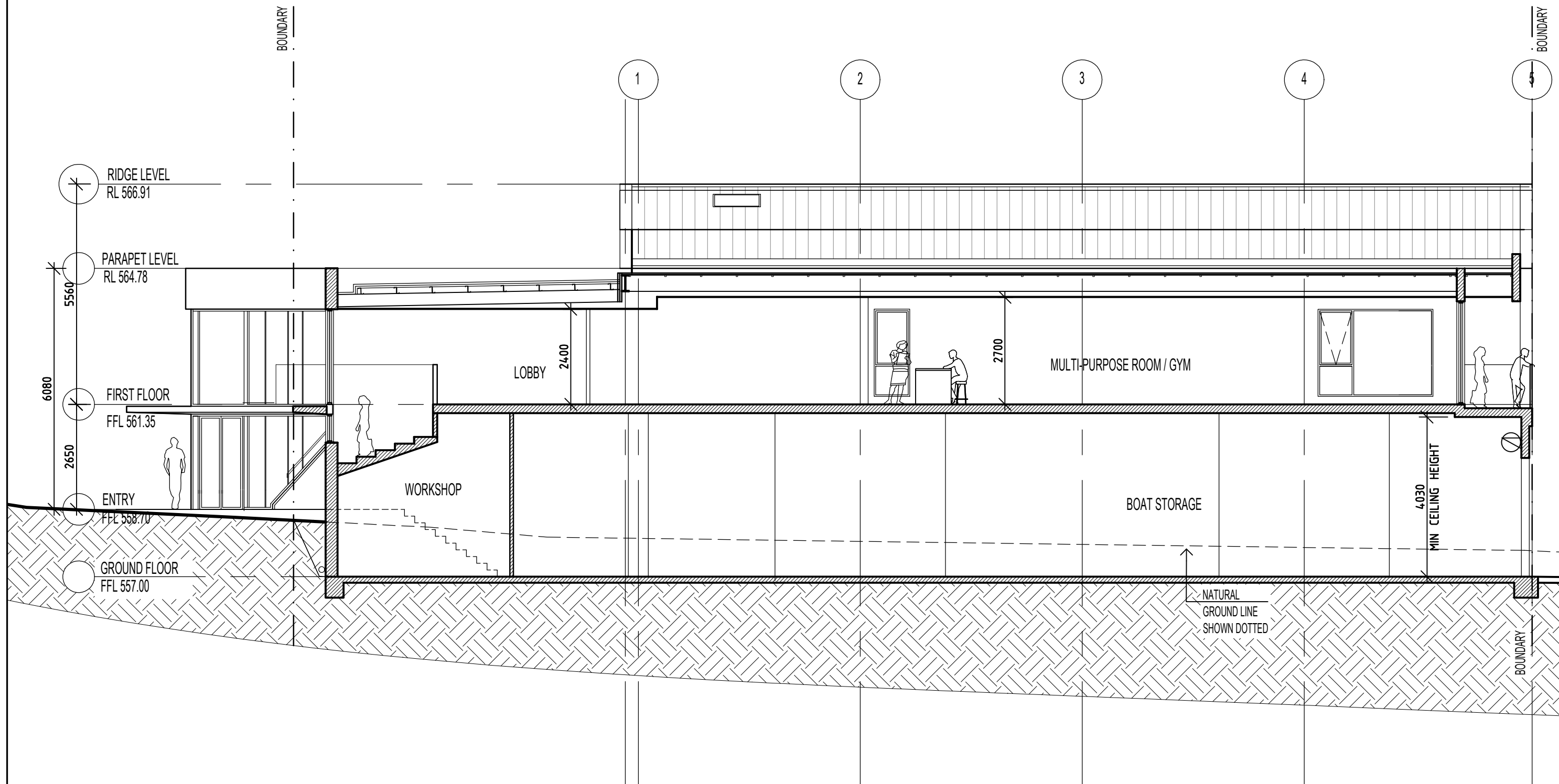
WORKS APPROVAL



B SECTION THROUGH SITE SOUTH-NORTH
1:100

DATE 27.04.18	ISSUE WORKS APPROVAL	REV A	<div><div></div><div>Note All dimensions to be checked on site. Any discrepancies to be referred to architect prior to proceeding. All levels to AHD u.n.o. All measurements in millimetres. Use written dimensions only. Do not Scale from drawings.</div><div>© COPYRIGHT</div></div>	Project CGS ROWING SHED REDEVELOPMENT ALEXANDRINA DRIVE, YARRALUMLA BAY				Date NOV 2017	<div><div><div><div>S</div><div>A</div></div><div>SteveAndrea</div><div>ARCHITECTURE P/L</div></div><div>ARBN NSW 6954 ACT 2261 m 04 12029146 t 62327199</div></div>			
				Client Canberra Grammar School				Block 3		Section 19	Division YARRALUMLA	Drawn LK/SA
												Scale 1:200
				Drawing SECTION B				Job No. 1715				
								Dwg No. DA08				Rev: A

WORKS APPROVAL



A SECTION THROUGH SITE WEST-EAST
1:100

DATE 27.04.18	ISSUE WORKS APPROVAL	REV A	<div><div></div><div>Note All dimensions to be checked on site. Any discrepancies to be referred to architect prior to proceeding. All levels to AHD u.n.o. All measurements in millimetres. Use written dimensions only. Do not Scale from drawings.</div><div>© COPYRIGHT</div></div>	Project CGS ROWING SHED REDEVELOPMENT ALEXANDRINA DRIVE, YARRALUMLA BAY				Date NOV 2017	<div><div><div></div><div>SteveAndrea</div><div>ARCHITECTURE P/L</div></div><div>ARBN NSW 6954 ACT 2261 m 0412029146 t 62327199</div></div>
								Drawn LK/SA	
				Client Canberra Grammar School	Block 3	Section 19	Division YARRALUMLA	Scale 1:100	
				Drawing SECTION A				Job No. 1715	
								Dwg No. DA07	